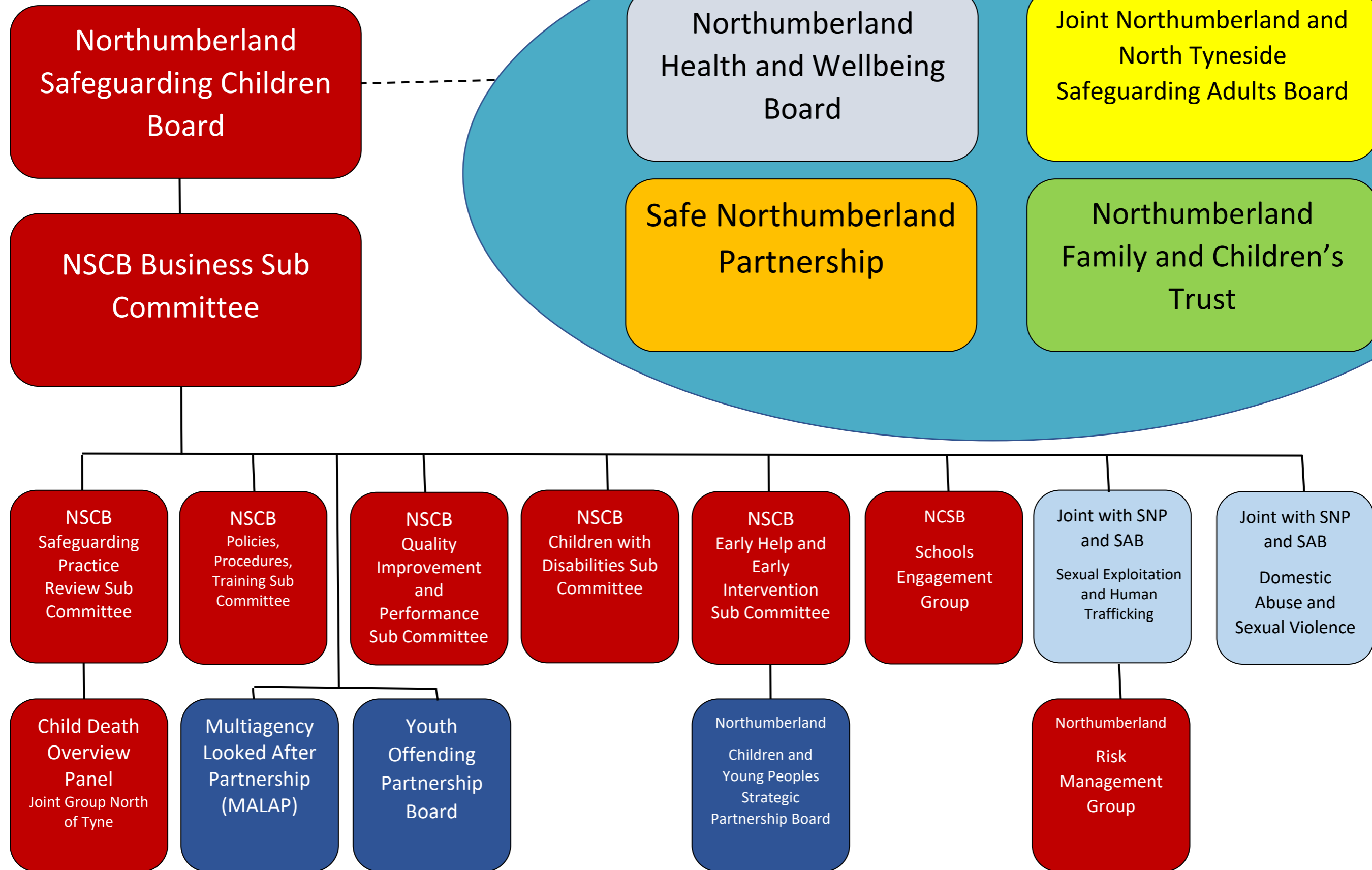
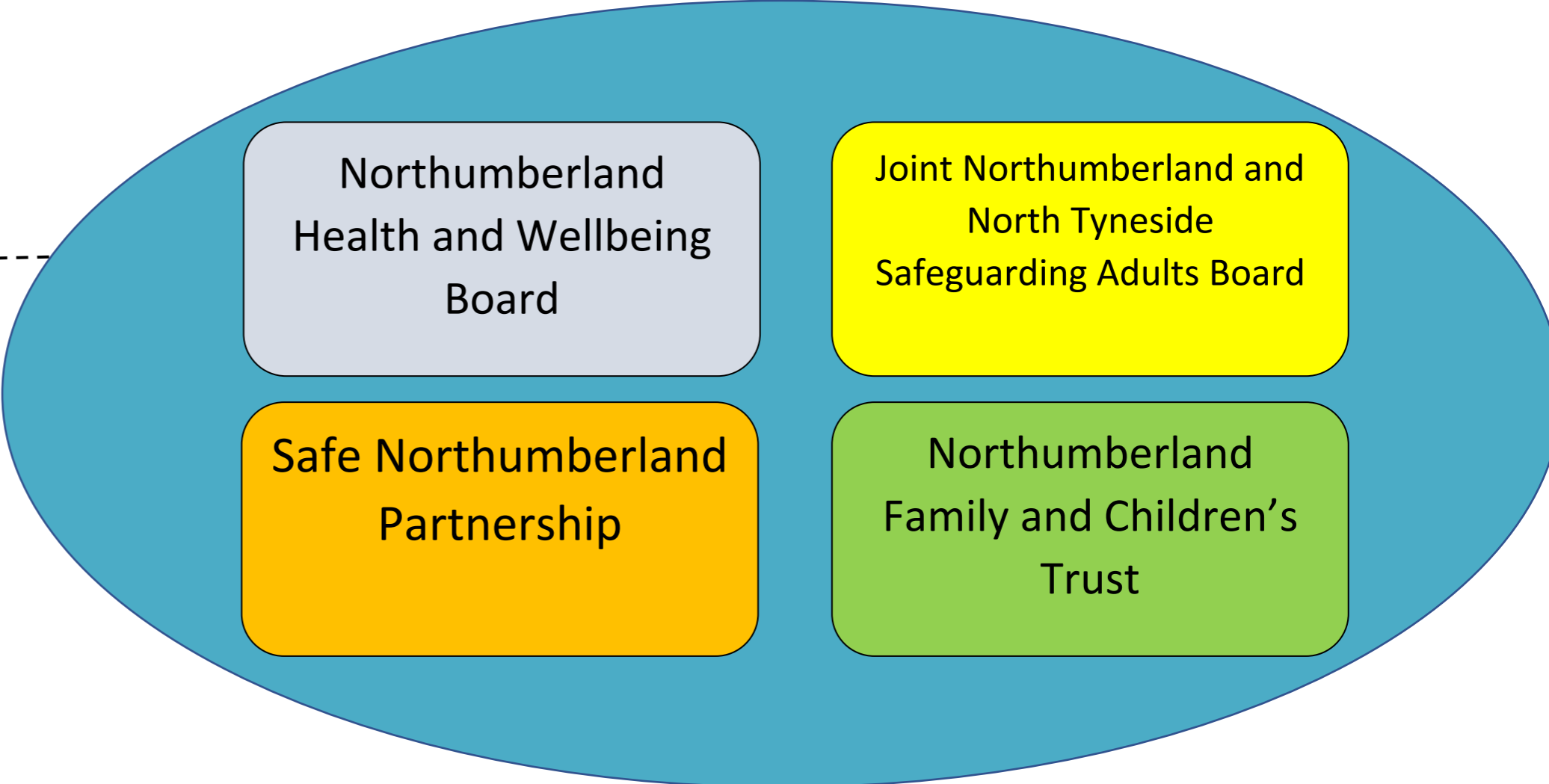


# NSCB Sub Committees Structure



**Northumberland Safeguarding Children Board**

**NSCB Business Sub Committee**



**Northumberland Health and Wellbeing Board**

**Joint Northumberland and North Tyneside Safeguarding Adults Board**

**Safe Northumberland Partnership**

**Northumberland Family and Children's Trust**

**NSCB Safeguarding Practice Review Sub Committee**

**NSCB Policies, Procedures, Training Sub Committee**

**NSCB Quality Improvement and Performance Sub Committee**

**NSCB Children with Disabilities Sub Committee**

**NSCB Early Help and Early Intervention Sub Committee**

**NSCB Schools Engagement Group**

**Joint with SNP and SAB Sexual Exploitation and Human Trafficking**

**Joint with SNP and SAB Domestic Abuse and Sexual Violence**

**Child Death Overview Panel  
Joint Group North of Tyne**

**Multiagency Looked After Partnership (MALAP)**

**Youth Offending Partnership Board**

**Northumberland Children and Young Peoples Strategic Partnership Board**

**Northumberland Risk Management Group**