

PSYCHOLOGICAL SERVICES - MEET THE TEAM



Andrew Scott
Educational
Psychologist



Jill Sandeman
Educational
Psychologist



Paula Hesford
SEND Manager/
Ed Psychologist



Jennifer Vecsey
Educational
Psychologist



Chris Heslop
Educational
Psychologist



Lance Hardy
Educational
Psychologist



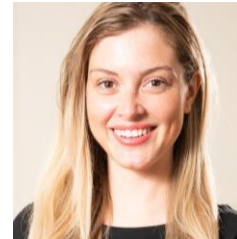
Gillian Shotton
Educational
Psychologist



Katinka Bryan
Senior Educational
Psychologist



Helen Tamworth
Educational
Psychologist



Honor Parker
Educational
Psychologist



Sam Edwards
Educational
Psychologist



Keith Ratcliffe
Educational
Psychologist



Lynsey Hutcheson
Educational Psychologist



Emma Miller
Educational
Psychologist

All our Educational Psychologists (EPs) are registered with the Health and Care Professions Council (HCPC) and have completed a Doctorate or Masters Degree in Educational Psychology and a first degree in psychology. Prior to training as EPs they have worked with children and young people in a variety of roles including as teachers.

We also work with Associate EPs who are commissioned for specific pieces of work, usually statutory assessments. We are pleased to support the training of new Educational Psychologists, supervising trainees from the University of Newcastle Educational Psychology Doctorate Course.



Nell Gair
Senior Mental Health
Lead Co-Ordinator



Kate Addison
Assistant Psychologist



Alison Walker
Assistant Psychologist

Nell, Kate and Alison are working to support the Mental Health Support Teams in Schools Trailblazer Project and the graduated approach to wellbeing and Mental Health in the county. They are based within Psychological Services and work closely with the Educational Psychologists.



Michelle Thomas
Admin Officer



Dorothy MacDonald
Office Manager



Allison Hall
Admin Officer



Siobhan Daghish
Admin Officer

Our Admin Team - Dorothy, Allison and Michelle are qualified in IT and business administration. They have vast experience within Northumberland County Council, predominantly Children's Services. They are knowledgeable of the functions and systems within the service and of the support available to children and young people. Siobhan is our recent new recruit who is joining us in the second level of her business apprenticeship and is providing invaluable support alongside the Literacy and EAL Teams within SEND Support.

