

Transport and Works Act 1992 The Northumberland Line Order County of Northumberland

Land Plan

Sheet No. 17 of 24

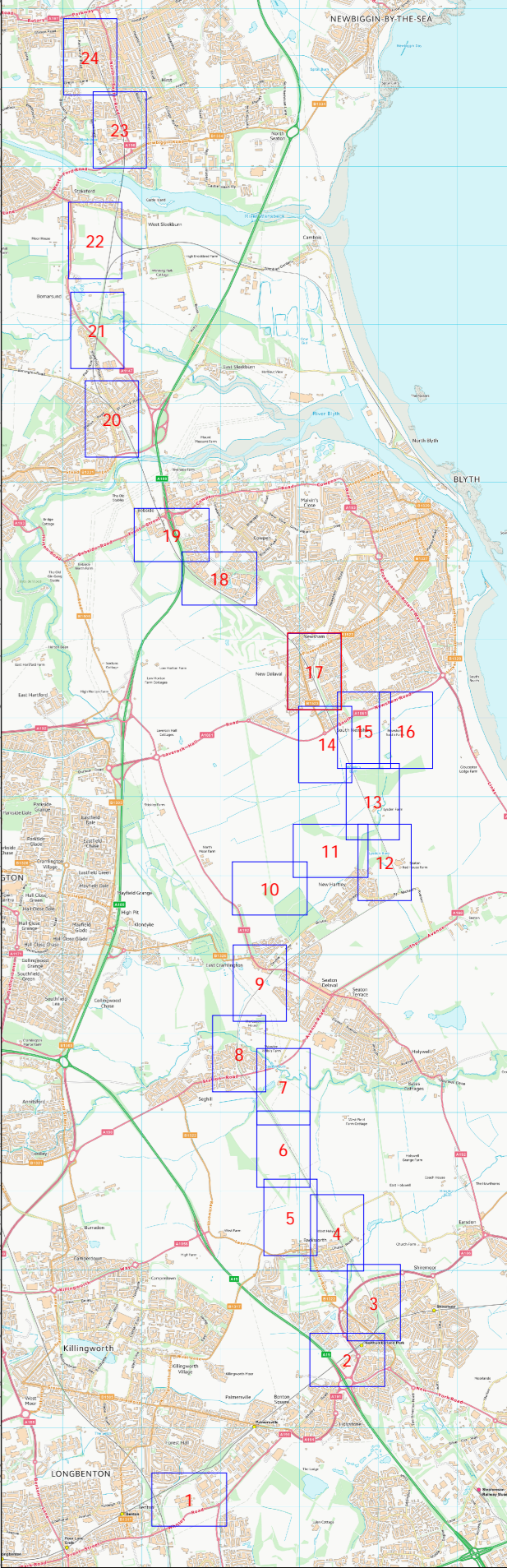
Key:

ORDER LIMITS

LAND SUBJECT TO POWER OF TEMPORARY POSSESSION

Number on Plan
215, 216

(A) NEW OR ALTERED MEANS OF ACCESS



Version No.

V22 - DRAFT

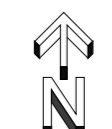
Where applicable the plot boundaries show the general boundary of the registered land. It does not show the exact line of the boundaries. Measurements scaled from this plan may not match measurements between the same points on the ground.

This map is based upon Ordnance Survey material with the permission of Ordnance Survey on behalf of the Controller of Her Majesty's Stationery Office. Unauthorised reproduction infringes crown copyright and may lead to prosecution or civil proceedings. Crown copyright and database rights 2021 Ordnance Survey. Licence number: 0100031673



CUT LINE - FOR CONTINUATION SEE SHEET 15

CUT LINE - FOR CONTINUATION SEE SHEET 14



Scale 1:1250 at A1

