

NORTHUMBERLAND COUNTY COUNCIL
TRAFFIC REGULATION ORDER

(Ref: TRO_007_82)

Northumberland County Council

West Northumberland Area (Waiting & Loading)

Composite Order 2011

Amendment No 82 Order 2022

Made: 11th August 2022

Coming into Force: 22nd August 2022

Northumberland County Council (hereinafter referred to as "the Council") in exercise of their powers under Sections 1, 2 and 4 and Paragraphs 20 and 27 of Schedule 9 of the Road Traffic Regulation Act 1984 ("the Act of 1984"), and after consulting with the Chief Officer of Police in accordance with Part III of Schedule 9 to the Act of 1984 and of all other enabling powers hereby make the following Order:-

1. Commencement and Citation

This Order shall come into operation on the 22nd August 2022 and may be cited as "Northumberland County Council West Northumberland Area (Waiting and Loading) Composite Order 2011 – Amendment No 82 Order 2022".

2. In the Order:-

"Order" means "Northumberland County Council West Northumberland Area (Waiting and Loading) Composite Order 2011".

"Amendment Order" means "Northumberland County Council West Northumberland Area (Waiting and Loading) Composite Order 2011 – Amendment No 82 Order 2022".

The Interpretation Act 1978 shall apply to this Order as it applies to an Act of Parliament.

3. Provisions

The following provisions set out below and in The Schedule to this Amendment Order shall be additions to, deletions from, or substitutions in the restrictions in the Order:

(A) Additions

to Schedule 1 – Waiting

(Referenced in this Amendment Order as: First Schedule – ADDITIONS)

to Schedule 4 – Keep Clear

(Referenced in this Amendment Order as: Second Schedule – ADDITIONS)

(B) Deletions

to Schedule 1 – Waiting

(Referenced in this Amendment Order as: Third Schedule – DELETIONS)

to Schedule 4 – Keep Clear

(Referenced in this Amendment Order as: Fourth Schedule – DELETIONS)

(C) Substitutions

None

THE COMMON SEAL OF NORTHUMBERLAND COUNTY COUNCIL was hereunto affixed this 11th day of August 2022 in the presence of:-




Duly Authorised Officer

Seal Number: 24509

FIRST SCHEDULE

ADDITIONS – Northumberland County Council West Northumberland Area (Waiting and Loading) Composite Order 2011 – Amendment No 82 Order 2022 – TRO_007_82

Schedule 1 – Waiting

Ref No	Street	Town	Side	Description	Proscribed Hours
007_82_117_8118	WHETSTONE BRIDGE ROAD	HEXHAM	East	At its junction with Allendale Road to its junction with Tynedale Terrace	A
007_82_117_8115	WHETSTONE BRIDGE ROAD	HEXHAM	East	At its junction with Tynedale Terrace to a point 37 metres north of its junction with Tynedale Terrace	A
007_82_103_8116	TYNEDALE TERRACE	HEXHAM	North	At its junction with Whetstone Bridge Road to a point 16 metres east of its junction with Whetstone Bridge Road	A
007_82_103_8117	TYNEDALE TERRACE	HEXHAM	South	At its junction with Whetstone Bridge Road to a point 16 metres east of its junction with Whetstone Bridge Road	A
007_82_117_8329	WHETSTONE BRIDGE ROAD	HEXHAM	West	At a point 76 metres south of its junction with Alexandra Crescent to a point 89 metres south of its junction with Alexandra Crescent	A
007_82_000_8332	WHETSTONE BRIDGE ROAD	HEXHAM	West	At a point 69 metres north of its junction with Allendale Road to a point 131 metres north of its junction with Allendale Road	Z7
007_82_000_8103	WHETSTONE BRIDGE ROAD	HEXHAM	West	At its junction with Alexandra Crescent to a point 44 metres south of its junction with Alexandra Crescent	Z7
007_82_117_8114	WHETSTONE BRIDGE ROAD	HEXHAM	East	At a point 37 metres north of its junction with Tynedale Terrace to its junction with the U8289 Alexander Terrace Tynedale Terrace Back Lane road	Z7
007_82_000_8333	ALEXANDRA CRESCENT	HEXHAM	South	At its junction with Whetstone Bridge Road to a point 6 metres west of its junction with Whetstone Bridge Road	Z7

SECOND SCHEDULE

ADDITIONS – Northumberland County Council West Northumberland Area (Waiting and Loading) Composite Order 2011 – Amendment No 82 Order 2022 – TRO_007_82

Schedule 4 – Keep Clear

Ref No	Street	Town	Side	Description	Proscribed Hours
007_82_117_8331	WHETSTONE BRIDGE ROAD	HEXHAM	West	At a point 37 metres north of its junction with Allendale Road to a point 69 metres north of its junction with Allendale Road	C
007_82_117_8101	WHETSTONE BRIDGE ROAD	HEXHAM	West	At a point 44 metres south of its junction with Alexandra Crescent to a point 76 metres south of its junction with Alexandra Crescent	C
007_82_117_8330	WHETSTONE BRIDGE ROAD	HEXHAM	West	At a point 89 metres south of its junction with Alexandra Crescent to a point 121 metres south of its junction with Alexandra Crescent	C

THIRD SCHEDULE

DELETIONS – Northumberland County Council West Northumberland Area (Waiting and Loading) Composite Order 2011 – Amendment No 82 Order 2022 – TRO_007_82

Schedule 1 – Waiting

Ref No	Street	Town	Side	Description	Proscribed Hours
007-117-006	WHETSTONE BRIDGE ROAD	HEXHAM	East	A point 122 metres south of its junction with Tynedale Terrace to its junction with Allendale Road	A
007-117-001	WHETSTONE BRIDGE ROAD	HEXHAM	West	A point 140 metres north of its junction with Allendale Road to a point 166 metres north of its junction with Allendale Road	Z6
007-117-003	WHETSTONE BRIDGE ROAD	HEXHAM	East	At its junction with Tynedale Terrace to a point 122 metres south of its junction with Tynedale Terrace	Z7
007-117-004	WHETSTONE BRIDGE ROAD	HEXHAM	East	At its junction with Alexandra Terrace/Tynedale Terrace Back Lane to its junction with Tynedale Terrace	Z7
007-103-001	TYNEDALE TERRACE	HEXHAM	North	At its junction with Whetstone Bridge Road to a point 10 metres east of its junction with Whetstone Bridge Road	Z7
007-103-002	TYNEDALE TERRACE	HEXHAM	South	At its junction with Whetstone Bridge Road to a point 10 metres east of its junction with Whetstone Bridge Road	Z7

FOURTH SCHEDULE

DELETIONS – Northumberland County Council West Northumberland Area (Waiting and Loading) Composite Order 2011 – Amendment No 82 Order 2022 – TRO_007_82

Schedule 4 – Keep Clear

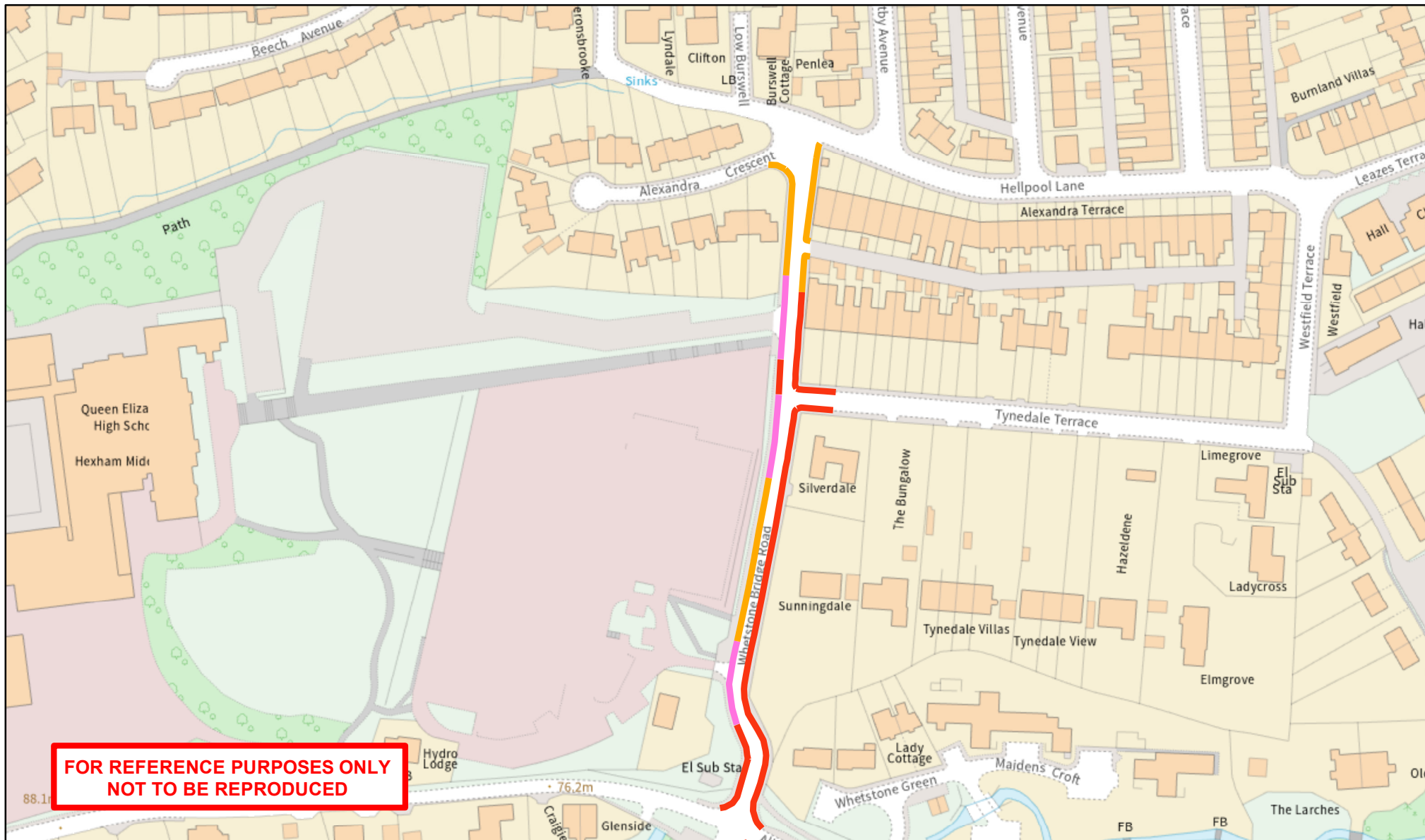
Ref No	Street	Town	Side	Description	Proscribed Hours
007_04-117-008	WHETSTONE BRIDGE ROAD	HEXHAM	West	A point 37 metres north of its junction with Allendale Road to a point 81 metres north of its junction with Allendale Road	C


**NORTHUMBERLAND COUNTY COUNCIL
ROAD TRAFFIC REGULATION ACT 1984
WEST NORTHUMBERLAND AREA (WAITING AND LOADING)
COMPOSITE ORDER 2011 AMENDMENT NO 82 ORDER 2022**

**STATEMENT OF THE COUNCIL'S REASONS FOR
PROPOSING TO MAKE THE ORDER**

Hexham Academies S278

The Order is necessary to improve road safety by prohibiting obstructive and indiscriminate parking often associated with school start and end times within the vicinity of Queen Elizabeth High School and St. Joseph's RC Middle School in Hexham.



 <p>Northumberland County Council</p>	<p>Network Management Information System</p>		<p>Title: Proposed Parking Restrictions Whetstone Bridge Road Hexham</p>			<p>Key:</p> <ul style="list-style-type: none"> Proposed 'No Waiting at Any Time' Restrictions (Double Yellow Lines) Proposed 'No Waiting' Restrictions (Single Yellow Lines) Mon-Fri 8.30-9.30am & 3-4pm Proposed 'No Stopping' Restrictions (School Keep Clear Zig-Zag Markings) Mon-Fri 8am-5pm
<p>Northumberland County Council County Hall Morpeth Northumberland NE61 2EF Tel: 0345 600 6400</p>	<p>This map is reproduced from Ordnance Survey material with the permission of Ordnance Survey on behalf of the Controller of Her Majesty's Stationary Office Crown Copyright. Unauthorised reproduction infringes Crown Copyright and may lead to prosecution or civil proceedings. License no. 100049048 (2019).</p>		<p>Drn: WB</p>	<p>Date: 17.06.2022</p>	<p>Scale: 1:2,000</p>	