



Northumberland

County Council

RECORD OF DECISION TAKEN BY SERVICE DIRECTOR - LOCAL SERVICES

Paul Jones

Proposed Additional 'School Keep Clear' Restriction & 20 MPH Speed Limit – Shilbottle Primary School

Cabinet Member: Councillor John Riddle

24 November 2022

Purpose of Report

This report sets out the background to the proposals to introduce a 'School Keep Clear' restriction adjacent to Shilbottle Primary School on Ashfield Terrace, together with a new 20 MPH speed limit at Fallodon Avenue, Kiln Lonnen, Lee Avenue and The Haven (which lie to the west of the school).

Recommendations

It is recommended that the additional 'School Keep Clear' parking restrictions and the proposed 20 MPH speed limit are implemented as proposed in order to improve road safety in the area.

Link to Corporate Plan

Living – 'We want you to feel safe, healthy and cared for'

Enjoying – 'We want you to love where you live'

Learning – 'We want you to achieve and realise your potential'

Key Issues

1. The County Council has received concerns regarding road safety issues at Shilbottle Primary School.
2. Advisory 20 when lights flash signage is to be introduced on the C95 at Grange Road to encourage reduced vehicle speeds at school start and finish times.
3. A permanent 20mph speed limit is to be introduced on Fallodon Avenue, Kiln Lonnen, Lee Avenue and The Haven.

Delegated Decision

4. Additional 'School Keep Clear' parking restrictions will be introduced on Ashfield Terrace where there is an additional pedestrian entrance to the school.
5. Pencil-style bollards are to be introduced to further highlight the presence of the school.
6. The scheme is supported by the local County Councillor and Shilbottle Primary School.
7. The scheme is to be funded through the 2022/23 Local Transport Plan (LTP) programme.

Background

Ashfield Terrace leads to several residential properties, but also provides access to the eastern entrances of Shilbottle Primary School. One entrance is used by school pupils and the other is the entrance to the staff car park. There are currently no parking restrictions on Ashfield Terrace.

Officers have observed congestion at school start and end times with obstructive and indiscriminate parking occurring directly outside the school entrance on Ashfield Terrace. As a result, a 'No Stopping' restriction in the form of 'School Keep Clear' zig-zag markings (as shown in Figure 1 below) is to be installed in order to improve the safety of those accessing the school at this point. This restriction will be in place Monday to Friday between 8am and 5pm.

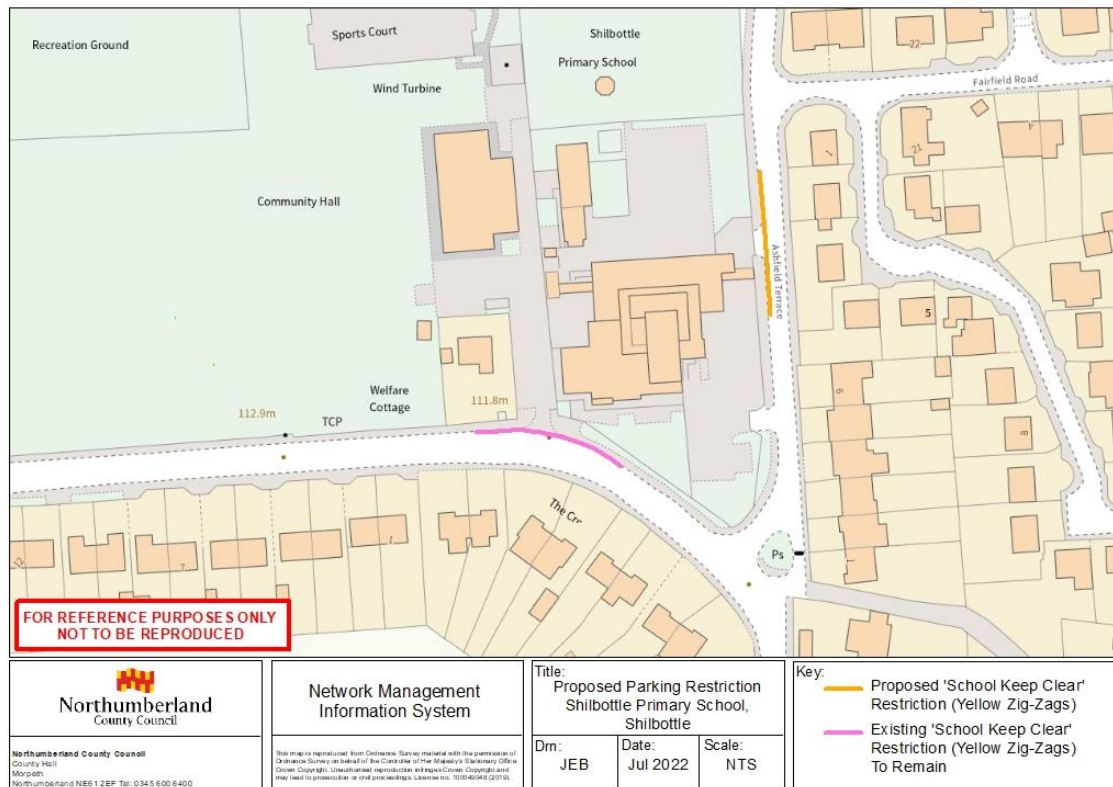


Fig. 1: Proposed parking restriction on Ashfield Terrace

Delegated Decision

Given the Council's policy to introduce appropriate 20mph speed limits outside all schools, the scheme also includes the introduction of advisory 20 when lights flash signage on the C95 at Grange Road, which will operate at school start and finish times.

Further measures in the form of pencil-style bollards are to be installed adjacent to the school on Grange Road and Ashfield Terrace. These are intended to further highlight the presence of the school, which will compliment the other measures being introduced.

Finally, a new 20mph speed limit is to be introduced in the estate to the west of Shilbottle Primary School this includes Fallodon Avenue, Kiln Lonnen, Lee Avenue and The Haven as shown in Figure 2.

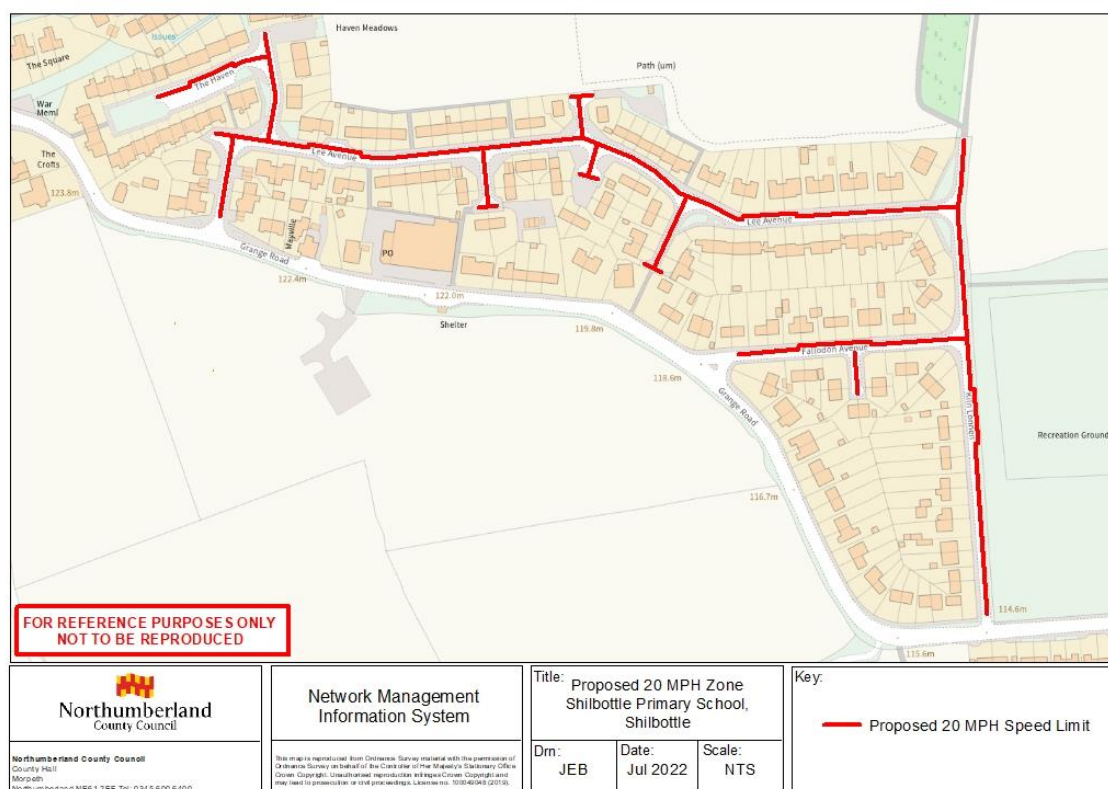


Fig. 2: 20 MPH speed limit extents at Fallodon Avenue, Kiln Lonnen, Lee Avenue and The Haven

Details of the overall scheme proposals are shown on the plans in Appendix A. They are intended to maintain the free flow of traffic where possible, to improve road safety around the schools, and to protect the amenity of the area overall.

Northumbria Police, other emergency services and relevant statutory consultees will be notified of these amendments as part of the process for making the permanent Orders.

Delegated Decision

Implications Arising out of the Report

Policy	Consistent with existing policies.
Finance and value for money	Scheme will be financed through the LTP 2022/23 Programme.
Legal	Motorists will be required to comply with the Traffic Regulation Orders.
Procurement	Road markings and associated traffic signs to meet Regulations for Traffic Regulation Orders.
Human Resources	None
Property	None
Equalities Yes <input type="checkbox"/> No <input type="checkbox"/> N/A <input type="checkbox"/>	N/A
Risk Assessment	The proposals are designed to reduce the risks associated with speeding and obstructive and indiscriminate parking.
Crime & Disorder	Regulations in place to carry out enforcement. 20 MPH speed limit schemes will reduce vehicle speeds and promote a safer environment in the area where the new speed limit is being introduced.
Customer Consideration	Statutory consultees have been consulted. Residents in the area, parents and staff using the school will benefit from reduced vehicle speeds.
Carbon reduction	Reduced vehicle speeds can lead to reduced vehicle emissions and parking restrictions can lead to a potential increase in the use of more sustainable forms of transport such as walking or cycling.
Ward	Shilbottle

Delegated Decision

Background Papers

File reference – S:\Highways\PROJECT\20\HE Minor Improvements\HE203429 - Shilbottle Primary School 20mph

Appendix A – Scheme Layout

Author

Report Author **Jason Bailey, Technical Assistant**

Delegated Decision

DECISION TAKEN

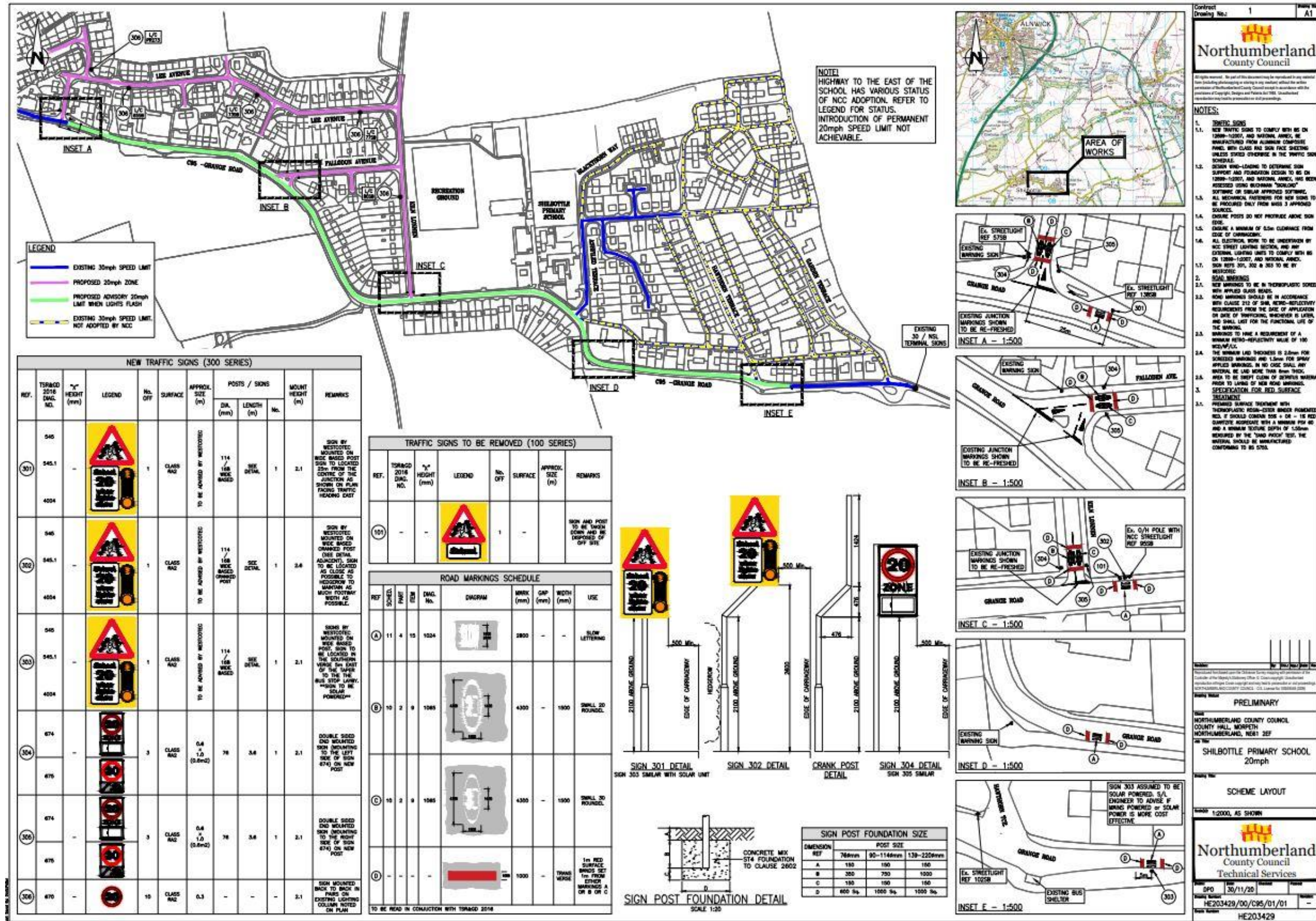
Title of Officer	Service Director, Local Services
Subject	Proposed additional 'School Keep Clear' restriction and proposed 20 MPH speed limits, Shilbottle Primary School.
Consultation	Not required on the grounds of road safety, although statutory consultees have been consulted.
Decision Taken	To introduce an additional 'School Keep Clear' restriction and new 20 MPH speed limits as proposed

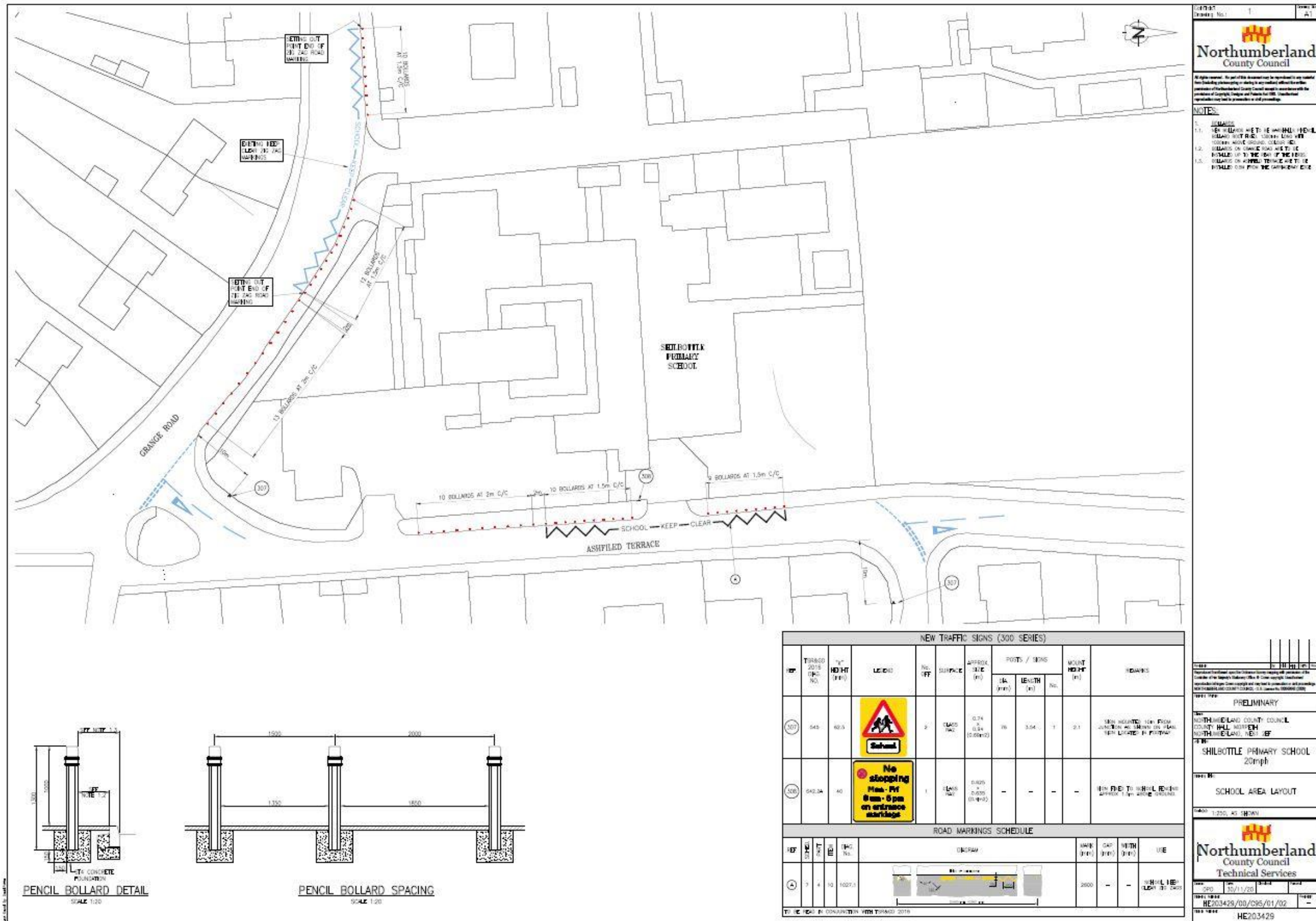
Signature of Director



Date
16.02.23

Appendix A – Scheme Layout

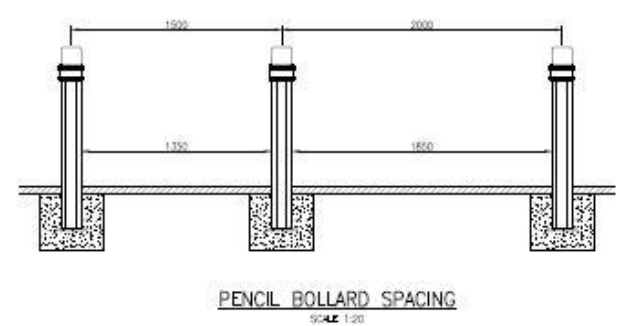
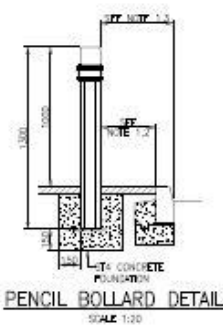




Northumberland County Council

Notes:

1. BOLLARDS
- 1.1. 10 BOLLARDS AT THE END OF THE ROAD
- 1.2. BOLLARDS ON GRANGE ROAD ARE TO BE INSTALLED ON THE SIDE OF THE ROAD
- 1.3. BOLLARDS ON ASHFIELD TERRACE ARE TO BE INSTALLED ON THE SIDE OF THE ROAD



NEW TRAFFIC SIGNS (300 SERIES)											
REF	TRAFFIC SIGN NO.	SIGN HEIGHT (mm)	SIGN	NO. OFF	SURFACE	APPROX. SIZE (mm)	POSTS / SIGNS		MOUNT HEIGHT (mm)	ROADS	
							DIAM. (mm)	LENGTH (mm)			
307	545	605		2	GLASS PAINT	0.74 x 0.54 (0.69m x 0.50m)	36	354	1	2.1	SIGN MOUNTED 100mm FROM JUNCTION AT 50mm TO 100mm FROM SIGN. 100mm FROM SIGN.
308	542.34	40		1	GLASS PAINT	0.425 x 0.275 (0.41m x 0.27m)	-	-	-	-	SIGN TO BE INSTALLED 100mm FROM SIGN.

ROAD MARKINGS SCHEDULE						
REF	MARKING	TRAFFIC SIGN NO.	DESCRIPTION	MARK SIZE (mm)	MARK SPACING (mm)	USE
309	3	1027.1		2000	-	SCHOOL AREA LAYOUT

PRELIMINARY

NORTHUMBRLAND COUNTY COUNCIL
COUNTY HALL, NEWBURN
NORTHUMBRLAND, NE20 1EF

SHILBOTTLE PRIMARY SCHOOL
20mph

SCHOOL AREA LAYOUT

SCALE 1:200, AS SHOWN

Northumberland County Council
Technical Services

DATE: 25/11/20
DRAWN: HE203429/05/095/01/02
CHECKED: HE203429