



Northumberland

County Council

RECORD OF DECISION TAKEN BY THE DIRECTOR OF ENVIRONMENT & TRANSPORT

Paul Jones

St Aidans RC Primary School and Thomas Bewick Academy 20 MPH Speed Limit

Cabinet Member: Councillor John Riddle

31st October 2023

Purpose of Report

This report sets out the background to the proposal to introduce a 20 MPH speed limit in the vicinity of St Aidans RC Primary School and Thomas Bewick Academy on Moorhouse Lane, Ashington.

Recommendation

It is recommended that the 20 MPH speed limit on the streets leading to St Aidans RC Primary School and Thomas Bewick Academy is introduced as proposed.

Link to Corporate Plan

This report is relevant to the following key themes in the Corporate Plan for 2023-26:

‘Thriving Places and Culture – Neighbourhoods are safe, clean and well maintained.’

Key Issues

1. Northumberland County Council has received concerns regarding traffic speeds in residential streets near St Aidans RC Primary School and Thomas Bewick Academy.
2. The provision of a 20 MPH speed limit on the streets leading to St Aidans RC Primary School and Thomas Bewick Academy aligns with the Council’s current policy to provide 20mph speed limits at schools.
3. The proposal is supported by the local County Councillor and school representatives.
4. The scheme is to be funded through the 2023/24 Local Transport Plan (LTP) programme.

Delegated Decision

Background

The introduction of speed limit changes on the streets leading to St Aidans RC Primary School and Thomas Bewick Academy forms part of the 2023/24 Local Transport Plan. The scheme ties in with the County Council’s road safety initiative to introduce reduced speed limits adjacent to all schools in Northumberland provided it is feasible to do so. Evidence suggests that measures of this kind adjacent to schools provide a safer environment for all road users.

Concerns have been raised regarding vehicle speeds on the roads situated outside of the schools, which presents road safety concerns for pedestrians including school children, cyclists and others using the route.

As a result, a 20 MPH speed limit is proposed to be introduced in order to alleviate these concerns and covers the areas identified below in Figure 1. The measures will consist of new regulatory traffic signs at the gateways of each restriction to indicate the new speed limit.

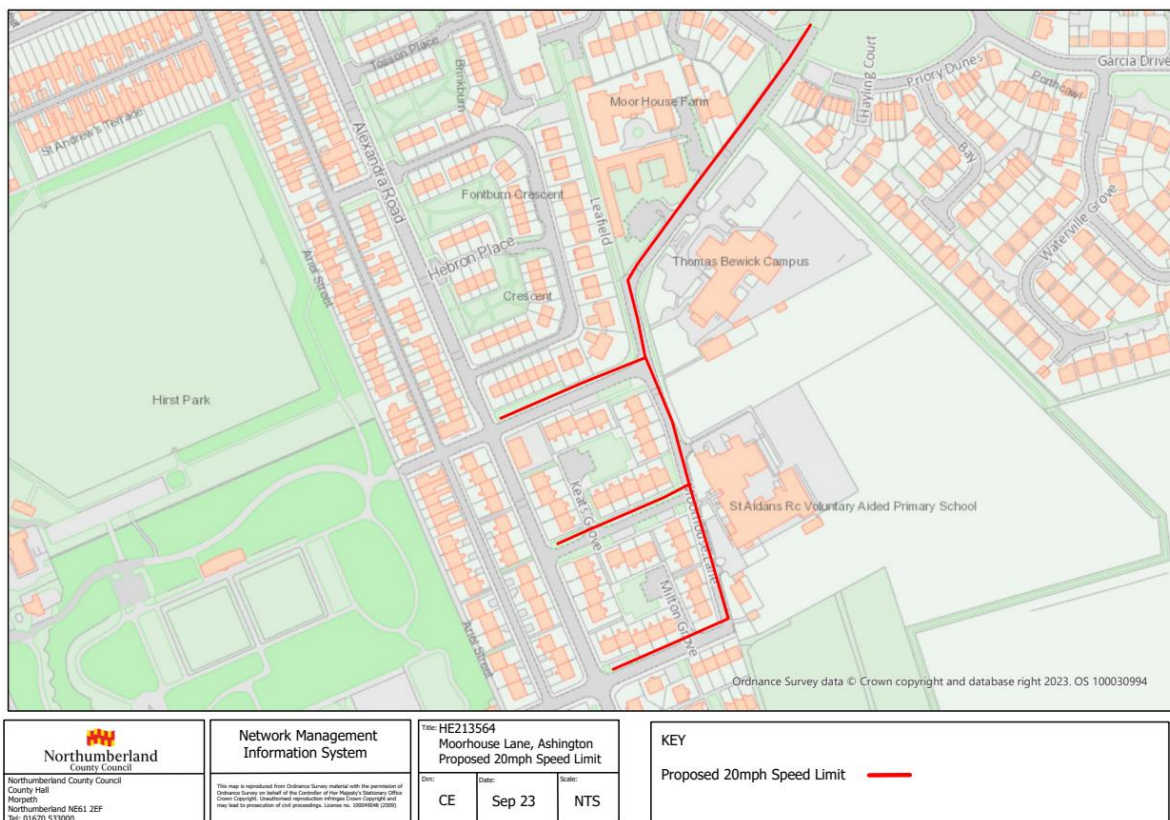


Fig. 1: Proposed 20 MPH speed limit extents around St Aidans RC Primary School and Thomas Bewick Academy

Delegated Decision

It is also proposed to narrow the junction of U6533 and U6534 Moorhouse Lane, to further reduce speed in this area. As well as the addition of new dropped kerbs, in conjunction with pencil bollards, to facilitate safe travel to/from school. After consultation with St Aidans, it is also proposed to widen the footpath and install new pedestrian barriers at the entrance to the school. These proposals can be observed in Figure 2 below.

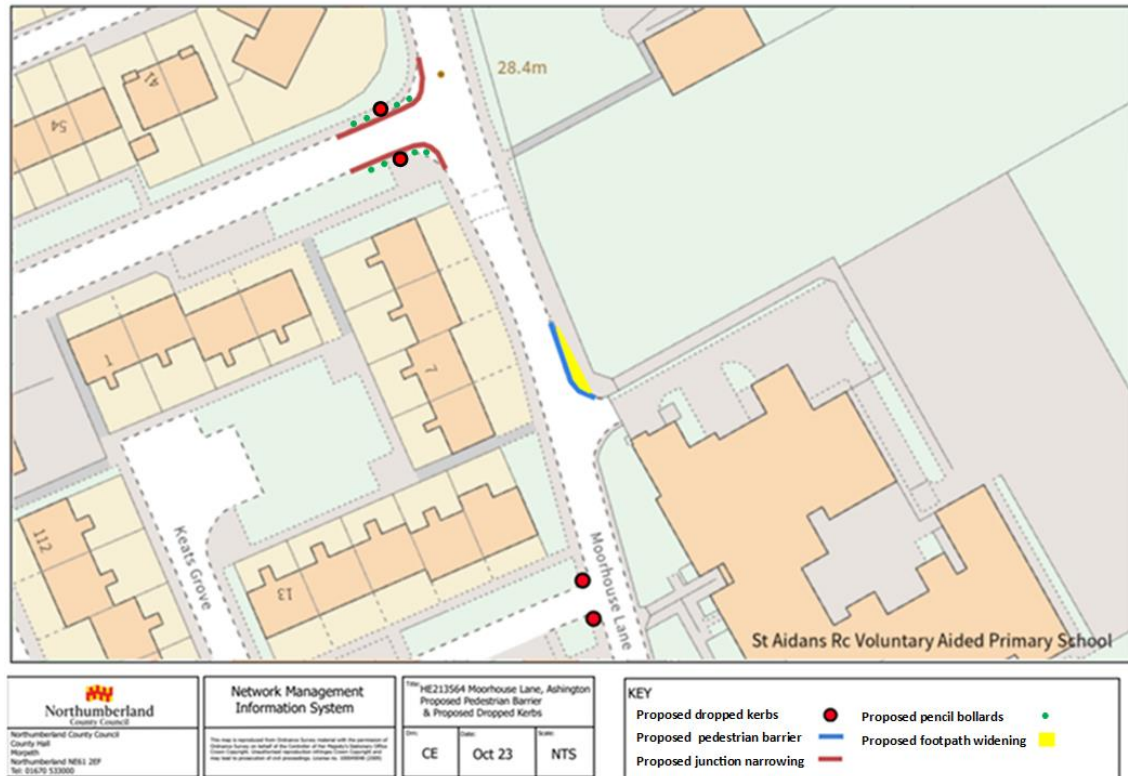


Fig. 2: Proposed junction narrowing, dropped kerbs, pencil bollards, footpath widening and new pedestrian barriers around St Aidans RC Primary School and Thomas Bewick Academy

Details of the proposals can be found in Appendix A. They are intended to increase road safety at schools by reducing the speed limit and to protect the amenity of the area overall. Northumbria Police, other emergency services and relevant statutory consultees will be notified of these amendments as part of the process for making the permanent Orders.

Delegated Decision

Implications Arising out of the Report

Policy	Consistent with existing policies
Finance and value for money	Scheme will be financed through the LTP 2023/24 programme
Legal	Motorists will be required to comply with the Traffic Regulation Orders
Procurement	None
Human Resources	None
Property	None
Equalities Yes <input type="checkbox"/> No <input type="checkbox"/> N/A <input type="checkbox"/>	N/A
Risk Assessment	The proposal is designed to reduce the risks associated with driving at speed
Crime & Disorder	Regulations in place to carry out enforcement
Customer Consideration	A reduction in speed will lead to a safer environment for all road users
Carbon reduction	Speed reduction assists with carbon reduction
Ward	College, Hirst, and Seaton with Newbiggin West

Delegated Decision

Background Papers

File reference – S:\Highways\PROJECT\21\HE Minor Improvements\HE213564D - Moorhouse Lane, Ashington

Appendix A – Scheme Plan

Author

Report Author **Michael McMonagle – Programme Officer**

Delegated Decision

DECISION TAKEN

Title of Officer	Director of Environment & Transport
Subject	Proposed 20 MPH Speed Limit on the streets leading to St Aidans RC Primary School and Thomas Bewick Academy on Moorhouse Lane, Ashington
Consultation	Not required – NCC policy is to introduce 20 MPH speed limits at all schools provided it is feasible to do so. However, statutory consultees have been informed.
Decision Taken	To introduce a new 20 MPH speed limit on the streets leading to St Aidans RC Primary School and Thomas Bewick Academy on Moorhouse Lane, Ashington

Signature of Director



Date

21st December 2023

Appendix A – Scheme Plan

