



Northumberland

County Council

RECORD OF DECISION TAKEN BY THE DIRECTOR OF ENVIRONMENT & TRANSPORT

Paul Jones

Proposed 14'8"/5.6m Length Restriction on Cow Road, Spittal

Cabinet Member: Councillor John Riddle

22nd November 2023

Purpose of Report

This report sets out the background to the proposed introduction of a 14'8"/5.6m Length Restriction on Cow Road, Spittal.

Recommendations

It is recommended that 14'8"/5.6m Length Restriction be implemented as proposed.

Link to Corporate Plan

This report is relevant to the following key themes in the Corporate Plan for 2023-26:

‘Thriving Places and Culture – Neighbourhoods are safe, clean and well maintained.’

Key Issues

1. Network Rail has reported numerous instances of damage to their assets caused by long vehicles trying to use the Cow Road rail crossing.
2. Due to the road layout and narrow crossing point, long vehicles cannot safely make the turn onto the crossing. Leading to vehicles having to either reverse back along the road or attempt to turn around at the crossing.
3. To alleviate these issues, it is proposed to implement a 14'8"/5.6m Length Restriction either side of the crossing point.
4. Councillor Hill is in support of the proposals.
5. The scheme will be funded by Network Rail.

Background

Cow road is a narrow section of carriageway for light traffic only, that links the A1167 to Spittal. Because of the road layout/width and the proximity of a manned level crossing, there are 'Unsuitable for HGVs' signs at the start of the road and prior to the last turning point. Unfortunately, as these signs are only advisory, they are regularly ignored by drivers.

The issue is predominantly on the southern approach to the crossing, which has limited space beforehand to make the turn onto the narrow crossing point. Network Rail have confirmed that vehicles longer than 14'8"/5.6m cannot make this turn. Vehicles longer than this then must reverse approximately 200 yards to a side road, which poses a serious safety concern. Or attempt to make the turn in the small area pictured below, which has led to many instances of property damage.

Concerns have been raised by Network Rail regarding long vehicles causing damage to their assets while trying to negotiate the crossing. To ease these issues, the county council has proposed to implement a 14'8"/5.6m Length Restriction.



Photographs of the Cow Road crossing point.

Proposals

The proposed scheme will comprise of a large, advanced warning sign on the A1167 showing that there is a length restriction is in place $\frac{3}{4}$ of a mile down Cow Road. It will also show the alternative route for vehicles longer than 14'8"/5.6m to take.

There will be another smaller, advanced warning sign on Cow Road itself, sited at the last safe place to turn. This will show a length restriction is in place $\frac{1}{4}$ mile ahead.

There will also be two prohibition signs indicating the start of the restriction, one placed either side of the crossing point. Any vehicles longer than 14'8"/5.6m that travel beyond these signs can be prosecuted.

The length restriction will only affect the rail crossing and will not restrict access to properties on Cow Road.

The proposals were discussed with Network Rail and the Local Ward Member who have confirmed they support the scheme.

Implications Arising out of the Report.

Policy	Consistent with existing policies
Finance and value for	Scheme will be financed by Network Rail

money	
Legal	None
Procurement	None
Human Resources	None
Property	None
Equalities (Impact Assessment attached)	None
Risk Assessment	The proposal is designed to improve road safety in the area.
Crime & Disorder	Regulations in place to carry out enforcement.
Customer Consideration	A length limit will protect Network Rail assets and lead to a safer environment for all road users.
Carbon reduction	None
Wards	Berwick East

Appendix Index

File reference –

S:\Highways\PROJECT\22\RT Rechargeable Schemes\RT220016 Cow Road Network
Rail Length Restriction Spittal

Appendix A –

RT220016-00-U114-10-01 Location Plan, Site Plan, and Scheme Details
RT220016-00-U114-10-02 Sign Schedules & Post Found Details

Background Papers:

None

Author and Contact Details

Report Author **Michael McMonagle, Programme Officer**

DECISION TAKEN

Title of Officer: Director, Environment and Transport

Subject: Proposed 14'8"/5.6m Length Restriction on Cow Road, Spittal

Consultation: Statutory consultees will be notified. The scheme has been approved by Network Rail

Decision Taken: To introduce the 14'8"/5.6m Length Restriction on Cow Road, Spittal

Signature of Director

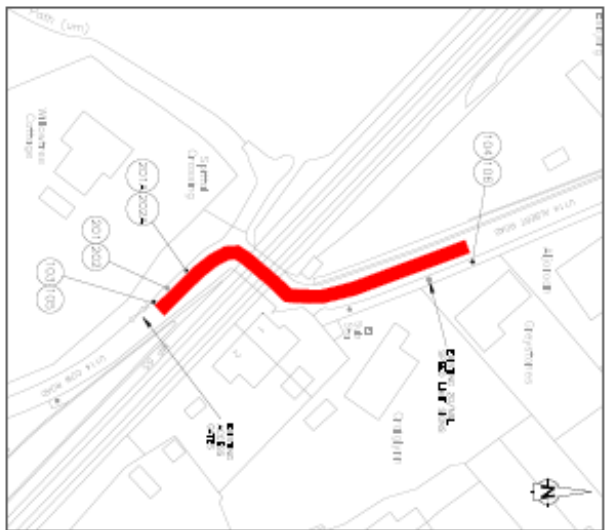


Date

28th December 2023

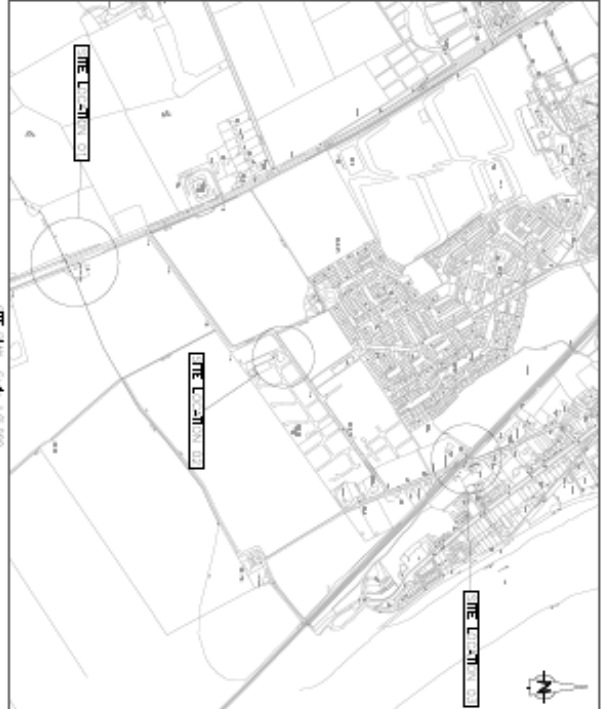
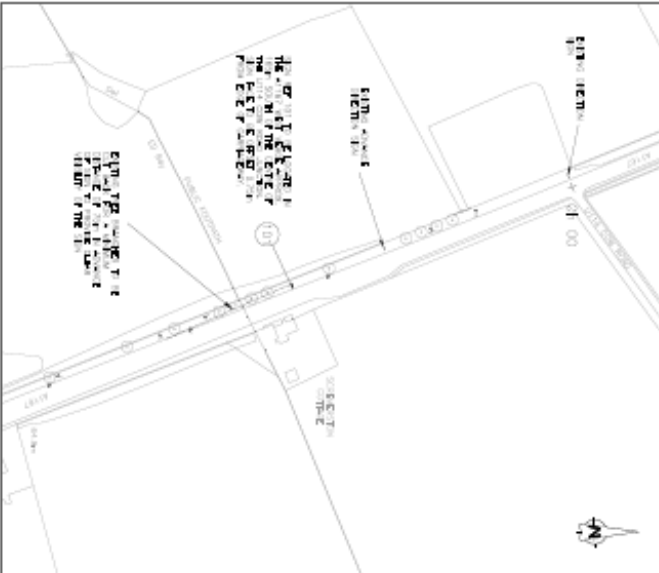
Appendix A

UT.F.1
UT.F.1.1
UT.F.1.2
UT.F.1.3
UT.F.1.4
UT.F.1.5
UT.F.1.6
UT.F.1.7
UT.F.1.8
UT.F.1.9
UT.F.1.10
UT.F.1.11
UT.F.1.12
UT.F.1.13
UT.F.1.14
UT.F.1.15
UT.F.1.16
UT.F.1.17
UT.F.1.18
UT.F.1.19
UT.F.1.20
UT.F.1.21
UT.F.1.22
UT.F.1.23
UT.F.1.24
UT.F.1.25
UT.F.1.26
UT.F.1.27
UT.F.1.28
UT.F.1.29
UT.F.1.30
UT.F.1.31
UT.F.1.32
UT.F.1.33
UT.F.1.34
UT.F.1.35
UT.F.1.36
UT.F.1.37
UT.F.1.38
UT.F.1.39
UT.F.1.40
UT.F.1.41
UT.F.1.42
UT.F.1.43
UT.F.1.44
UT.F.1.45
UT.F.1.46
UT.F.1.47
UT.F.1.48
UT.F.1.49
UT.F.1.50
UT.F.1.51
UT.F.1.52
UT.F.1.53
UT.F.1.54
UT.F.1.55
UT.F.1.56
UT.F.1.57
UT.F.1.58
UT.F.1.59
UT.F.1.60
UT.F.1.61
UT.F.1.62
UT.F.1.63
UT.F.1.64
UT.F.1.65
UT.F.1.66
UT.F.1.67
UT.F.1.68
UT.F.1.69
UT.F.1.70
UT.F.1.71
UT.F.1.72
UT.F.1.73
UT.F.1.74
UT.F.1.75
UT.F.1.76
UT.F.1.77
UT.F.1.78
UT.F.1.79
UT.F.1.80
UT.F.1.81
UT.F.1.82
UT.F.1.83
UT.F.1.84
UT.F.1.85
UT.F.1.86
UT.F.1.87
UT.F.1.88
UT.F.1.89
UT.F.1.90
UT.F.1.91
UT.F.1.92
UT.F.1.93
UT.F.1.94
UT.F.1.95
UT.F.1.96
UT.F.1.97
UT.F.1.98
UT.F.1.99
UT.F.1.100



UT.F.1 Details

UT.F.1 No.	UT.F.1 Description	UT.F.1 Length (m)	UT.F.1 Area (sq.m)
1	UT.F.1.1	100	1000
2	UT.F.1.2	200	2000
3	UT.F.1.3	300	3000



Northumberland
County Council
Township Services

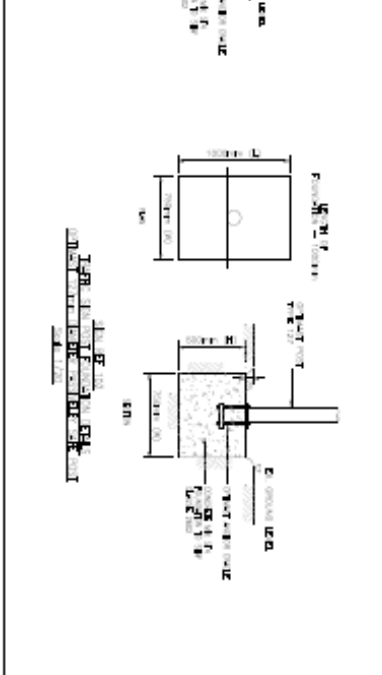
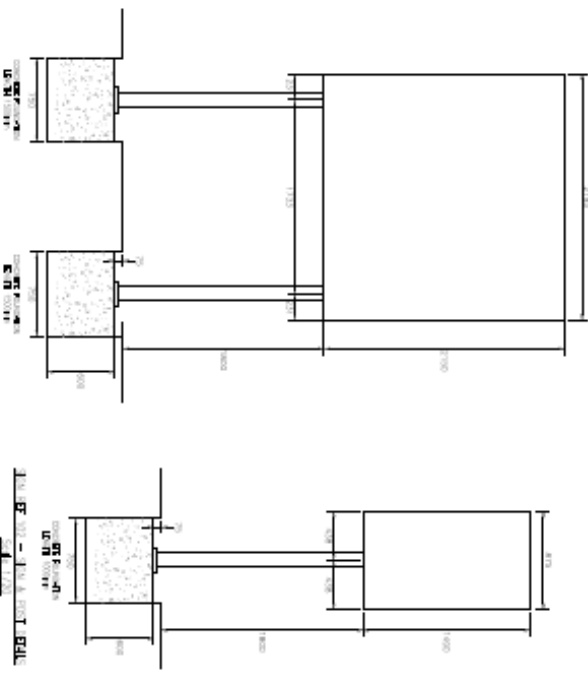
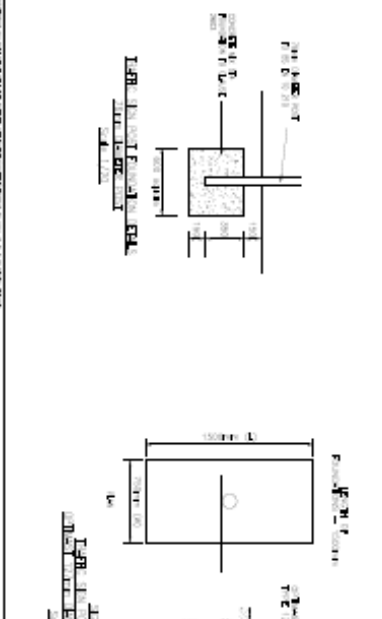
UT.F.1
UT.F.1.1
UT.F.1.2
UT.F.1.3
UT.F.1.4
UT.F.1.5
UT.F.1.6
UT.F.1.7
UT.F.1.8
UT.F.1.9
UT.F.1.10
UT.F.1.11
UT.F.1.12
UT.F.1.13
UT.F.1.14
UT.F.1.15
UT.F.1.16
UT.F.1.17
UT.F.1.18
UT.F.1.19
UT.F.1.20
UT.F.1.21
UT.F.1.22
UT.F.1.23
UT.F.1.24
UT.F.1.25
UT.F.1.26
UT.F.1.27
UT.F.1.28
UT.F.1.29
UT.F.1.30
UT.F.1.31
UT.F.1.32
UT.F.1.33
UT.F.1.34
UT.F.1.35
UT.F.1.36
UT.F.1.37
UT.F.1.38
UT.F.1.39
UT.F.1.40
UT.F.1.41
UT.F.1.42
UT.F.1.43
UT.F.1.44
UT.F.1.45
UT.F.1.46
UT.F.1.47
UT.F.1.48
UT.F.1.49
UT.F.1.50
UT.F.1.51
UT.F.1.52
UT.F.1.53
UT.F.1.54
UT.F.1.55
UT.F.1.56
UT.F.1.57
UT.F.1.58
UT.F.1.59
UT.F.1.60
UT.F.1.61
UT.F.1.62
UT.F.1.63
UT.F.1.64
UT.F.1.65
UT.F.1.66
UT.F.1.67
UT.F.1.68
UT.F.1.69
UT.F.1.70
UT.F.1.71
UT.F.1.72
UT.F.1.73
UT.F.1.74
UT.F.1.75
UT.F.1.76
UT.F.1.77
UT.F.1.78
UT.F.1.79
UT.F.1.80
UT.F.1.81
UT.F.1.82
UT.F.1.83
UT.F.1.84
UT.F.1.85
UT.F.1.86
UT.F.1.87
UT.F.1.88
UT.F.1.89
UT.F.1.90
UT.F.1.91
UT.F.1.92
UT.F.1.93
UT.F.1.94
UT.F.1.95
UT.F.1.96
UT.F.1.97
UT.F.1.98
UT.F.1.99
UT.F.1.100

SECTION E - TYPICAL SIGN SHEETS

ID	TRAFFIC CONTROL (SHEET NO.)	SIGN NO.	SHEET NO.	SIGN TYPE	SIGN SIZE	SIGN AREA			SIGN DESCRIPTION
						W	H	THICKNESS	
101	101	101	101	101	101" x 101"	101"	101"	101"	101" x 101" SIGN
102	102	102	102	102	102" x 102"	102"	102"	102"	102" x 102" SIGN
103	103	103	103	103	103" x 103"	103"	103"	103"	103" x 103" SIGN
104	104	104	104	104	104" x 104"	104"	104"	104"	104" x 104" SIGN

SECTION F - TYPICAL SIGN SHEETS

ID	TRAFFIC CONTROL (SHEET NO.)	SIGN NO.	SHEET NO.	SIGN TYPE	SIGN SIZE	SIGN AREA			SIGN DESCRIPTION
						W	H	THICKNESS	
201	201	201	201	201	201" x 201"	201"	201"	201"	201" x 201" SIGN
202	202	202	202	202	202" x 202"	202"	202"	202"	202" x 202" SIGN
203	203	203	203	203	203" x 203"	203"	203"	203"	203" x 203" SIGN



Northumberland County Council
Technical Services
 101 Northumberland Street, Newcastle, NE1 7RU
 Tel: 0191 273 2000
 Fax: 0191 273 2001
 Email: technical@northumberland.gov.uk

1. SIGN POST
2. SIGN
3. FOUNDATION
4. SIGN POST
5. SIGN
6. FOUNDATION
7. SIGN POST
8. SIGN
9. FOUNDATION
10. SIGN POST
11. SIGN
12. FOUNDATION

Northumberland County Council
Technical Services
 101 Northumberland Street, Newcastle, NE1 7RU
 Tel: 0191 273 2000
 Fax: 0191 273 2001
 Email: technical@northumberland.gov.uk

