



Northumberland

County Council

RECORD OF DECISION TAKEN BY SERVICE DIRECTOR - LOCAL SERVICES

Paul Jones

**Proposed Parking & Traffic Restrictions – Morpeth Rugby Football Club,
Morpeth**

Cabinet Member: Councillor John Riddle

12 December 2022

Purpose of Report

This report sets out the background to the proposals to introduce a 'No Waiting Monday – Friday 8am – 4pm' (single yellow line) restriction, a 'No Stopping Except Buses Monday – Friday 8am – 4pm' (bus stand markings) restriction, a one way only system and a 'Prohibition of Driving Except for Access by Disabled Badge Holders at Any Time and Except for Loading and Unloading by Goods Vehicles' restriction at Morpeth Rugby Football Club.

Recommendations

It is recommended that the proposed restrictions are implemented in order to improve road safety in the area.

Link to Corporate Plan

Living – 'We want you to feel safe, healthy and cared for'

Enjoying – 'We want you to love where you live'

Learning – 'We want you to achieve and realise your potential'

Key Issues

1. The County Council has received concerns regarding road safety issues at Morpeth Rugby Football Club, which is used by Chantry and Newminster Middle Schools, during school start and end times.
2. Parking and traffic movement restrictions are proposed in order to alleviate the situation and to improve road safety for all road users.
3. The scheme is supported by Morpeth Rugby Football Club, the local County Councillor and school representatives.

Delegated Decision

4. There are two elements of the scheme, one being works on the adopted highway which will be funded by the 2022/23 Local Transport Plan (LTP) programme.
5. The second element of the scheme is the provision of a formal safe pedestrian route on rugby club land, which three local County Councillors and the Three Rivers Trust have made a contribution to.

Background

The U6111 is a no through road leading from the B6343 Mitford Road to Morpeth Rugby Football Club. As well as being home to Morpeth Rugby Football Club, the Club grounds offer parking facilities, which are used by those accessing it throughout the day and in evenings, along with parents of students at the neighbouring Chantry and Newminster Middle Schools as drop-off points during school start and end times. A 'Bus Only' layby is provided to assist local transport, but the area continues to experience significant volumes of traffic causing obstructive and indiscriminate parking and congestion during these peak hours.

Proposals

A 'No Waiting Monday – Friday 8am – 4pm' parking restriction in the form of a single yellow line is proposed around the perimeter of the grass verge to prohibit obstructive and indiscriminate parking and therefore maintain the flow of traffic during school operational hours. A new formalised Bus Stand operating Monday – Friday 8am – 4pm in the layby to the east of the turning circle is also proposed to allow for enforcement to be carried out. The locations of these proposals are shown below in Figure 1.

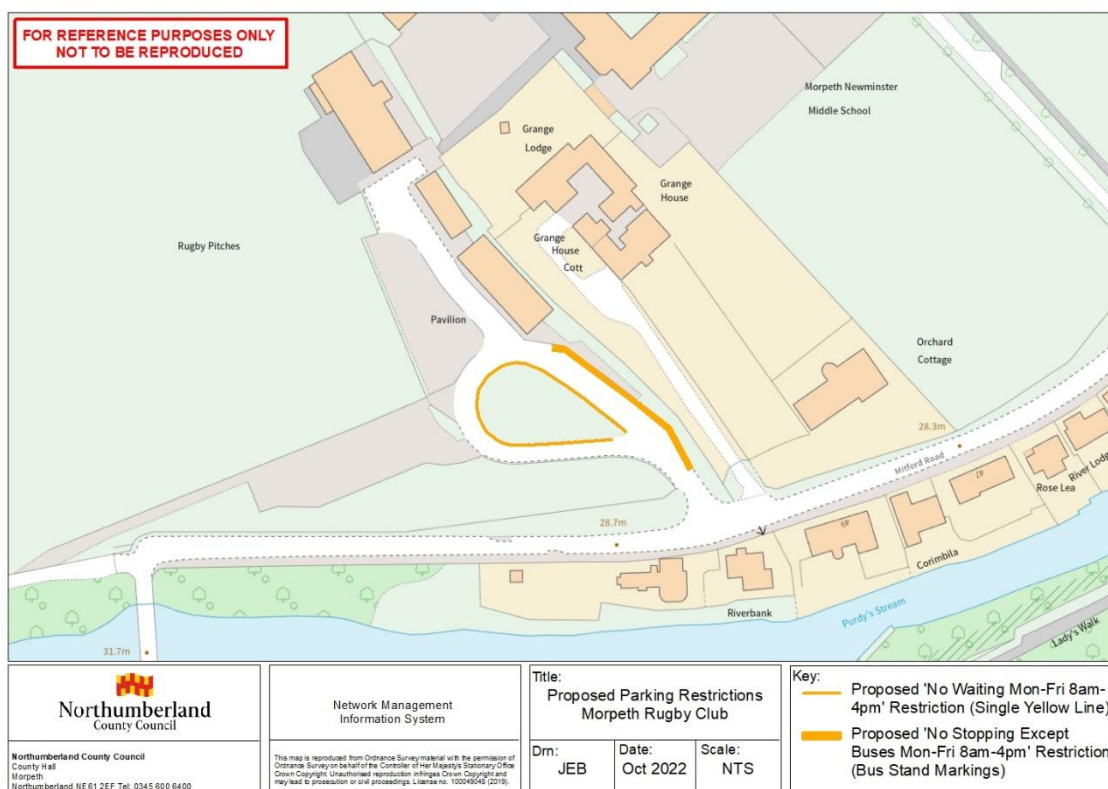


Figure 1: Proposed parking restrictions at Morpeth Rugby Club

A One Way system is proposed in a westerly direction through the turning circle in order to reduce the likelihood of collisions occurring, with a Prohibition of Entry restriction added to encourage the use of this directional system and

Delegated Decision

prohibit vehicles exiting the overflow car park from travelling eastbound. This is illustrated in Figure 2.

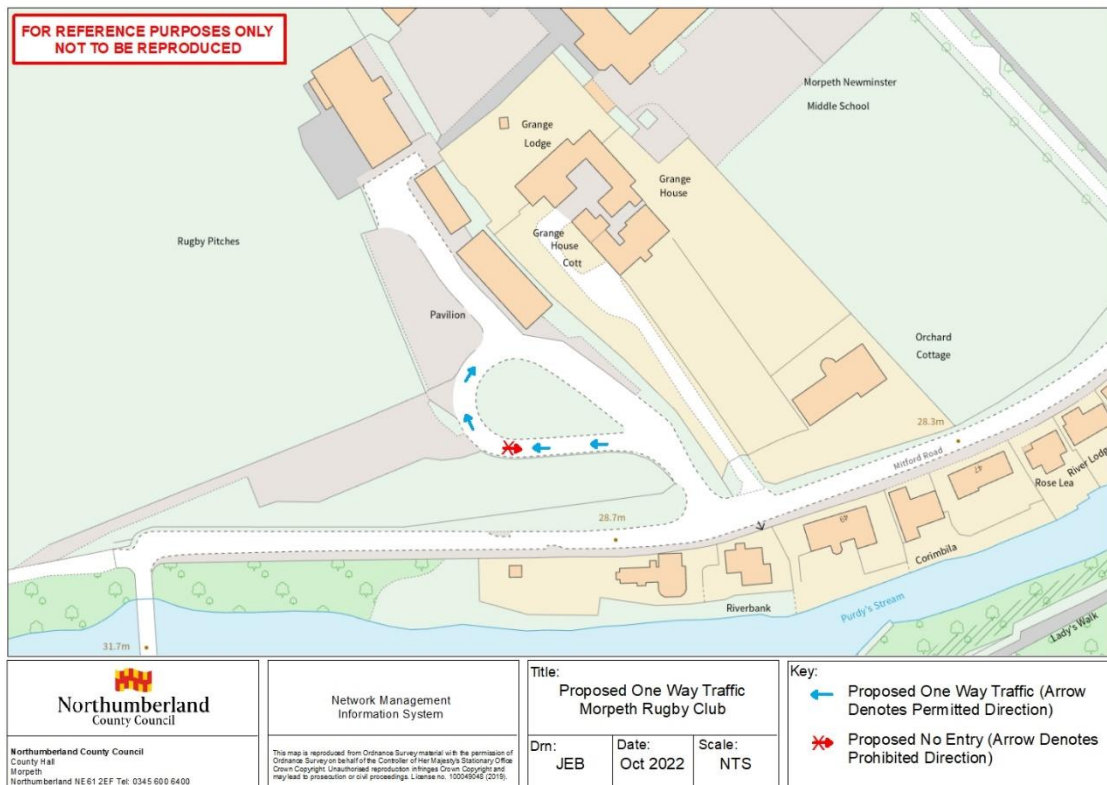


Figure 2: Proposed One Way & No Entry traffic restrictions at Morpeth Rugby Club

To encourage use of both available off-street car parks and to maintain the free flow of traffic whilst keeping it to a minimum i.e. only for use when exiting the main car park, a Prohibition of Motor Vehicles restriction is proposed adjacent to the turning circle which would prohibit motorists from accessing the existing service road when approaching from Mitford Road, although Blue Badge holders and goods vehicles will be exempt from these controls when required for access and this will be denoted by supplementary plates underneath the regulatory signage. The proposed extents of this restriction can be seen in Figure 3.

Delegated Decision

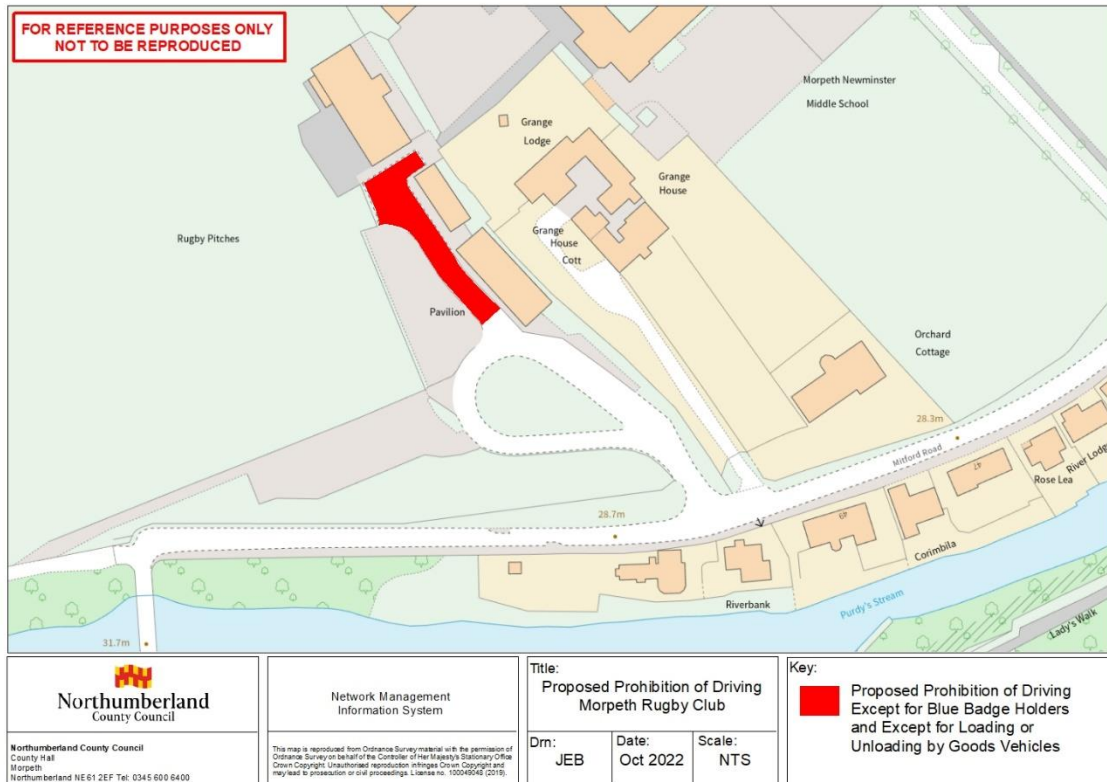


Figure 3: Proposed Prohibition of Motor Vehicles restriction (with exemptions) at Morpeth Rugby Club

Details of the proposals are shown on the plans in Appendix A. The parking and traffic movement restrictions are intended to maintain the free flow of traffic where possible, to improve road safety at Morpeth Rugby Club and to protect the amenity of the area overall.

Northumbria Police, other emergency services and relevant statutory consultees will be notified of these amendments as part of the process for making the permanent Orders.

Delegated Decision

Implications Arising out of the Report

Policy	Consistent with existing policies.
Finance and value for money	The scheme will be financed by the LTP 2022/23 Programme, the MLIS budgets and Three Rivers Trust.
Legal	Motorists will be required to comply with the Traffic Regulation Orders.
Procurement	None
Human Resources	None
Property	None
Equalities	N/A
Risk Assessment	The proposals are designed to reduce the risks associated with traffic congestion and obstructive and indiscriminate parking.
Crime & Disorder	Regulations in place to carry out enforcement.
Customer Consideration	Statutory consultees have been consulted. Users will benefit from improved road safety measures.
Carbon reduction	None
Ward	Morpeth North

Delegated Decision

Background Papers

File reference – S:\Highways\PROJECT\22\HF Local Safety Schemes\Urgent Safety Measures\HF224228D - Morpeth Rugby Club

Appendix A – Scheme Layout

Author

Report Author Jason Bailey, Technical Assistant

Delegated Decision

DECISION TAKEN

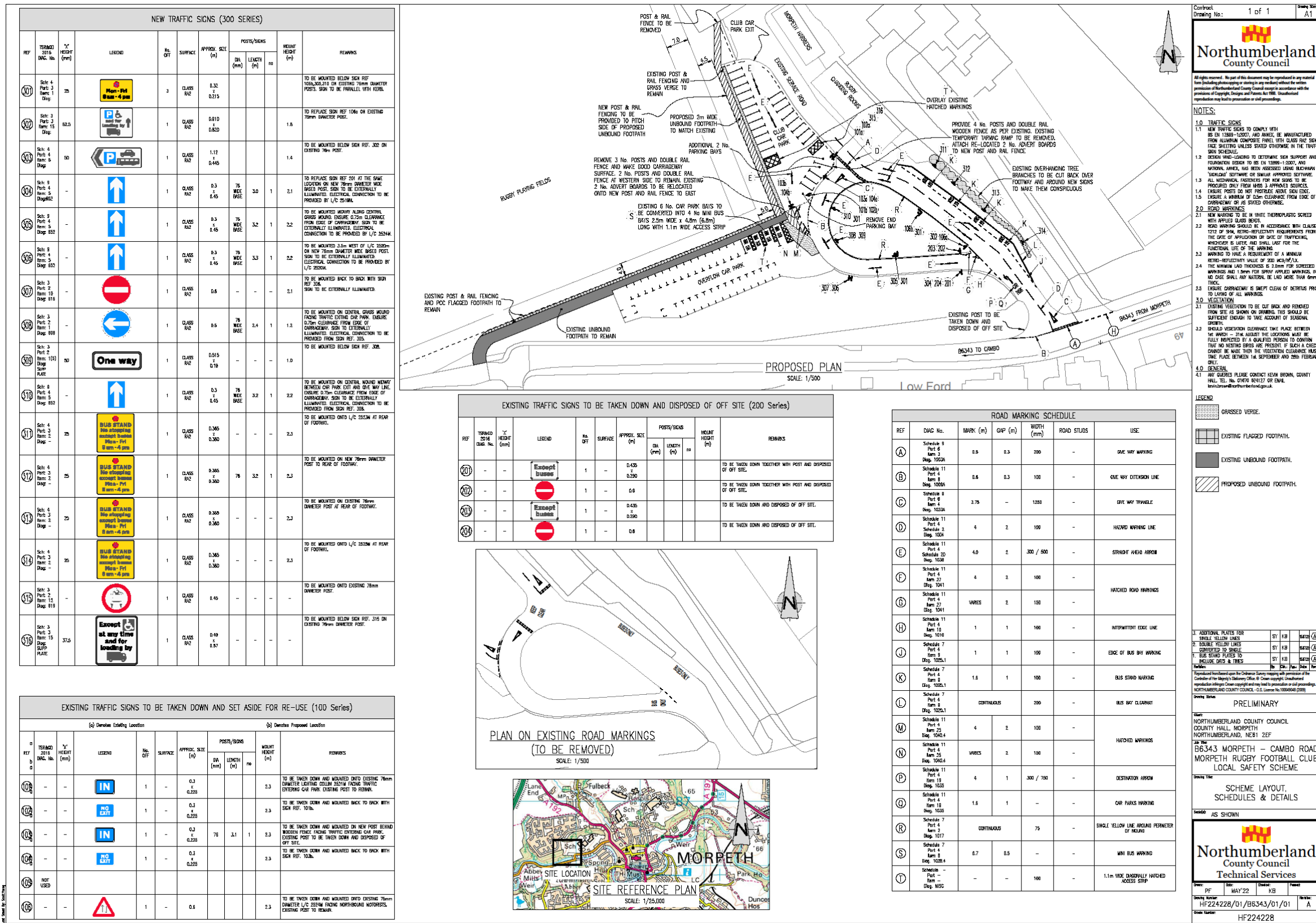
Title of Officer	Service Director, Local Services
Subject	Proposed parking restrictions and traffic movement restrictions at Morpeth Rugby Football Club, Morpeth.
Consultation	Not required on the grounds of road safety, although statutory consultees have been consulted.
Decision Taken	To introduce new parking restrictions and traffic movement restrictions at Morpeth Rugby Football Club in Morpeth.

Signature of Director



Date
16.12.22

Appendix A – Scheme Layout



For File: B:\Projects\B6343\2019 Local Safety Scheme\Project Safety Review\PROJECT - Safety - Rugs 04\Images\Drawings\PROJECTS-B6343-01-01 MORPETH RUGBY CLUB - 1 - Scheme Layout