



Northumberland

County Council

RECORD OF DECISION TAKEN BY SERVICE DIRECTOR - LOCAL SERVICES

Paul Jones

East Thirston 30 Miles Per Hour and 50 Miles Per Hour Speed Limits

Cabinet Member: Councillor John Riddle

02 December 2022

Purpose of Report

This report sets out the background to the proposed 30mph speed limit at East Thirston on the B6345 and the U6001 and the proposed 50mph speed limit between West Thirston and East Thirston on the B6345.

Recommendations

It is recommended that the following speed limits are introduced as proposed:

- 30mph speed limit on the B6345 and U6001 at East Thirston; and
- 50mph speed limit on the B6345 between West Thirston and East Thirston.

Link to Corporate Plan

Living – ‘We want you to feel safe, healthy and cared for’

Enjoying – ‘We want you to love where you live’

Key Issues

1. The County Council has received concerns about traffic speeds on the B6345 at East Thirston.
2. The scheme is supported by Councillor Glen Sanderson as County Councillor for Longhorsley and by Thirston Parish Council.
3. The scheme is to be funded through the 2022/23 Local Transport Plan (LTP) programme.

Delegated Decision

Background

The B6345 is a single carriageway linking Longframlington in the west and Amble in the east. At East Thirston as well as between West Thirston and East Thirston the B6345 is currently subject to a derestricted, national speed limit of 60mph. At East Thirston the B6345 is relatively narrow often being less than 5.5 metres in width and there are several accesses to residential properties.

There are currently no road markings at East Thirston. Existing traffic signs are limited to gateway signs at either end of the village, pedestrians in road warning signs and junction warning signs (for the junction with the U6001 leading to Wintrick Farm).

There is a public footpath along the north side of the B6345 in the eastern part of East Thirston, however there is not any public footpath adjacent to the B6345 in the western part of East Thirston. Forward visibility is restricted due to the gradient of the road. This can be seen in Figure 1.



Figure 1: Looking eastwards on the B6345 towards East Thirston

Proposals

Following concerns raised by residents to Councillor Sanderson and Thirston Parish Council, a new 30 mph speed limit is proposed to be introduced at East Thirston.

The scheme will consist of new gateway signage, and two different types of countdown markings on the approaches to the 30mph limit. This will be in the

Delegated Decision

form of red countdown road markings at the west, and dragon's teeth road markings at the east.

A plan of the proposed scheme is attached as Appendix A.

Following the completion of a routine maintenance scheme, it is proposed to omit the carriageway central warning line through most of East Thirston within the extents of the new 30mph speed limit. This is because centre line removal introduces an element level of uncertainty, which is reflected in lower speeds. However there would be a carriageway central warning line on the B6345 in the vicinity of the junction with the U6001. It is also proposed to introduce a 30mph limit on the U6001 for a distance of 55 metres south of its junction with the B6345.

Further traffic calming features are proposed to include road markings in the form of speed limit roundels on the ground to inform and remind motorists of the speed restrictions. 'SLOW' road marking text would also be installed throughout the scheme and vegetation would be cleared sufficiently where necessary to ensure vehicles have suitable visibility distance of traffic signs. Additionally the height of the verge would be reduced on the south side of the B6345 at its junction with the U6001 on the west side of the U6001 to improve visibility for road users on the U6001 of approaching eastbound traffic ascending the incline of the B6345.

For the section of the B6345 between the 30mph speed limits at West Thirston and East Thirston, reducing the speed limit from the existing national speed limit to 50mph is proposed. This is appropriate given the relatively high number of bends on this approximately 600 metre stretch of the B6345. The scheme would also include new 'pedestrians in road' warning signs on a grey background with a 'No footway for ½ mile' message for the 50mph section of the B6345 and the western part of East Thirston.

The extents of the proposed 30mph and 50mph speed limits are illustrated in Figure 2.

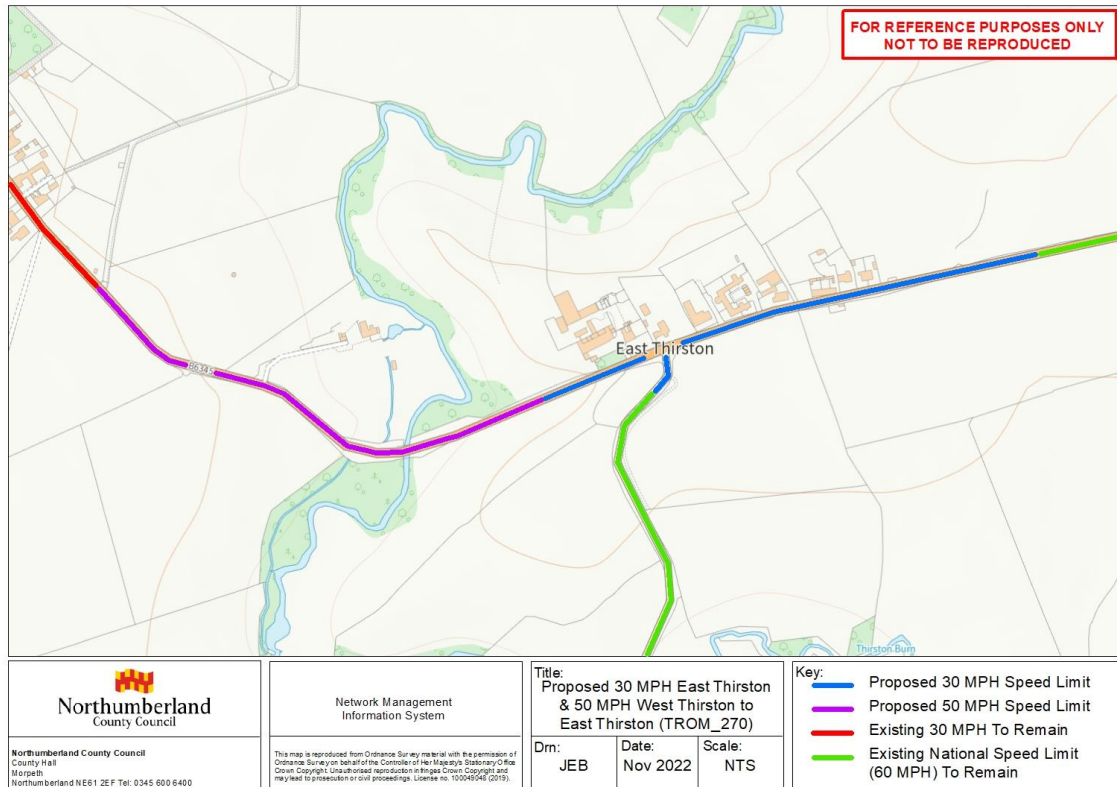


Figure 2: Proposed 30mph and 50mph speed limits at East Thirston

If implemented, it is expected that the speed limit reduction measures will promote slower traffic speeds on the B6345 at East Thirston where pedestrians, cyclists and equestrians may be present and where vehicles may be turning into or out of residential properties. Further details of the proposals can be found in Appendix A.

Northumbria Police, other emergency services and relevant statutory consultees will be notified of these amendments as part of the process for creating permanent traffic regulation orders.

Delegated Decision

Implications Arising out of the Report

Policy	Consistent with existing policies
Finance and value for money	The scheme will be financed through the LTP 2022/23 Programme
Legal	Motorists will be required to comply with the Traffic Regulation Order (reference TROM_270)
Procurement	N/A
Human Resources	None
Property	None
Equalities	N/A
Risk Assessment	The proposal is designed to reduce the risks associated with driving at speed, and will promote a safer environment in East Thirston
Crime & Disorder	Regulations in place to carry out enforcement
Customer Consideration	A reduction in speed will lead to a safer environment for all road users
Carbon reduction	Speed reduction assists with carbon reduction
Ward	Longhorsley

Appendix Index

Appendix A – Scheme Layout and Traffic Signs and Road Marking Schedules

Background Papers

None

Report Author **Jason Bailey, Technical Assistant**

DECISION TAKEN

Title of Officer

Service Director, Local Services

Subject

Proposed 30mph speed limit at East Thirston on the B6345 and the U6001 and proposed 50mph speed limit between West Thirston and East Thirston on the B6345

Consultation

Not required for the introduction of a 30mph or a 50 mph speed limit restriction at this location. Statutory consultees will be informed

Decision Taken

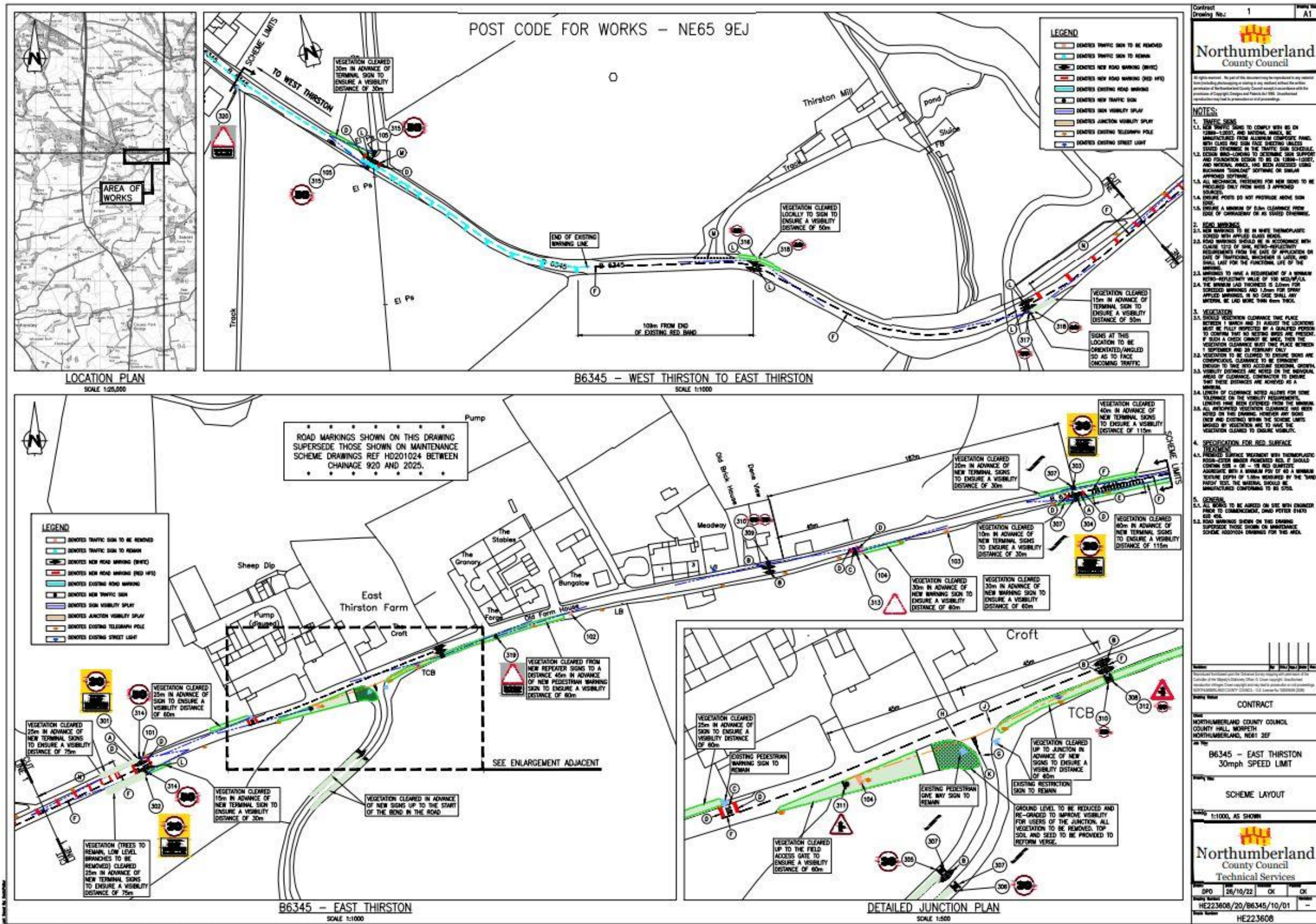
To introduce a 30mph speed limit at East Thirston and a 50mph speed limit between West Thirston and East Thirston

Signature of Director



Date

04.12.22

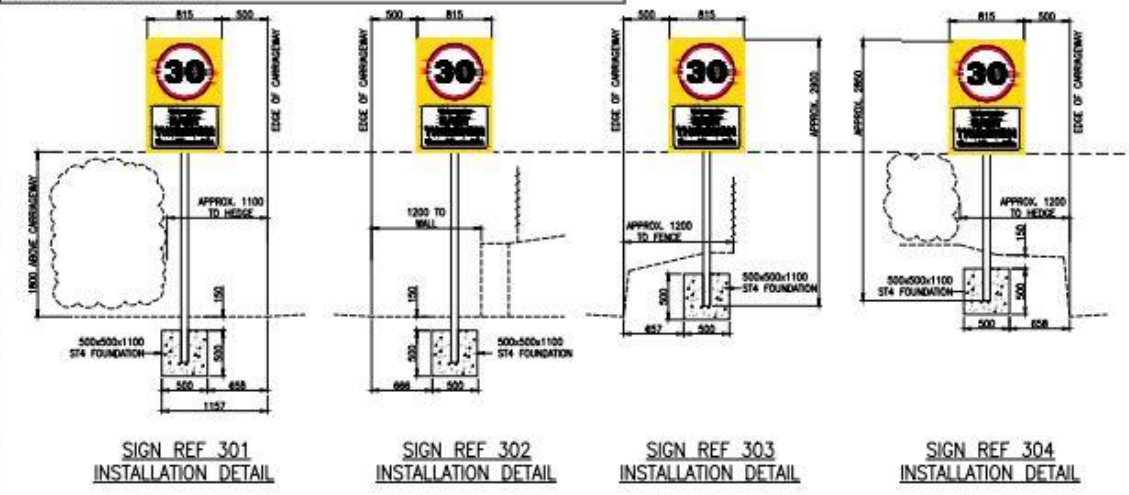
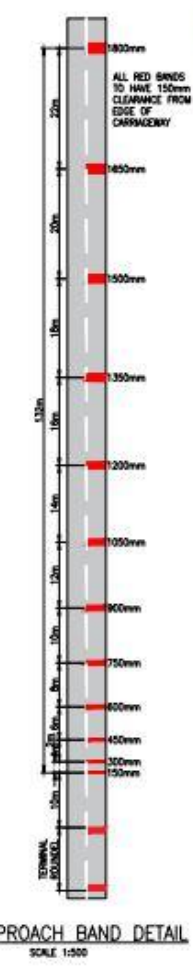
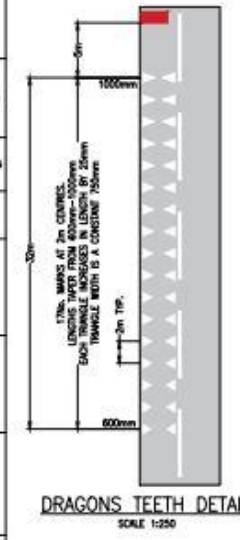
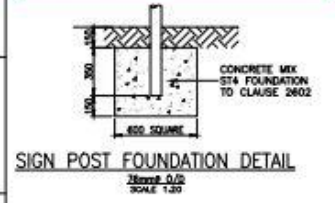


TRAFFIC SIGNS TO BE REMOVED (100 SERIES)										
REF.	TORRIS 2016 DAG. NO.	"C" HEIGHT (mm)	LED/D	NO. OFF.	SURFACE	APPROX. SIZE (m)	POSTS / SIGNS DIA. (mm)	LENGTH (m)	NO.	REMARKS
101	906.1	-		1	-	0.8	76	-	1	SIGN AND POST TO BE TAKEN UP AND BE DISPOSED OF OFF SITE
102	906.1	-		1	-	0.8	76	-	1	SIGN AND POST TO BE TAKEN UP AND BE DISPOSED OF OFF SITE
103	944.1	-		1	-	0.8	76	-	1	SIGN AND POST TO BE TAKEN UP AND BE DISPOSED OF OFF SITE
104	2452.1	45 80 45		2	-	1.25 0.735	76	-	2	SIGN AND POSTS TO BE TAKEN UP AND BE DISPOSED OF OFF SITE
105	871	-		2	CLASS R2	0.8	-	-	-	SEE REMARKS TAKE DOWN SIGN AND SKIRAGE FOR RE-USE BY AREA OFFICE. SIGN TO BE RETURNED TO AREA DEPOT

NEW TRAFFIC SIGNS (300 SERIES)										
REF.	TORRIS 2016 DAG. NO.	"C" HEIGHT (mm)	LED/D	NO. OFF.	SURFACE	APPROX. SIZE (m)	POSTS / SIGNS DIA. (mm)	LENGTH (m)	NO.	REMARKS
301	670	-		4	CLASS R2	0.8	76	3.025	1	SIGN MOUNTED ON NEW 76mm POST 3m IN ADVANCE OF EXISTING SIGN TO BE REMOVED AND 3m IN THE NORTHERN VERGE.
302	670	-		4	CLASS R2	0.8	76	3.025	1	SIGN MOUNTED ON NEW 76mm POST IN THE SOUTHERN VERGE DIRECTLY OPPOSITE SIGN REF 301
303	2452.1	30 30		2	CLASS R2	1.25 0.735 (1.0m x 0.5m)	76	-	2	SIGN MOUNTED ON NEW 76mm POST IN THE NORTHERN VERGE 30m EAST OF THE PROPERTY BOUNDARY LINE AS SHOWN ON PLAN.
304	670	-		2	CLASS R2	0.8	76	2.9	1	SIGN MOUNTED ON NEW 76mm POST IN THE SOUTHERN VERGE DIRECTLY OPPOSITE SIGN REF 303
305	670	-		2	CLASS R2	0.8	76	2.9	1	SIGN MOUNTED ON NEW 76mm POST IN THE SOUTHERN VERGE DIRECTLY OPPOSITE SIGN REF 303
306	871	-		4	CLASS R2	0.8	-	-	-	SEE REMARKS SIGN MOUNTED BACK TO BACK WITH SIGN REF 301, 302 & 304. SIGN TO BE MOUNTED AT THE TOP OF THE POST IN ALL INSTANCES
307	670	-		4	CLASS R2	0.8	76	2.9	1	SIGN MOUNTED ON NEW 76mm POST IN THE SOUTHERN VERGE DIRECTLY OPPOSITE SIGN REF 303
308	670	-		4	CLASS R2	0.8	76	2.9	1	SIGN MOUNTED ON NEW 76mm POST IN THE SOUTHERN VERGE DIRECTLY OPPOSITE SIGN REF 303
309	670	-		4	CLASS R2	0.8	76	2.9	1	SIGN MOUNTED ON NEW 76mm POST IN THE SOUTHERN VERGE DIRECTLY OPPOSITE SIGN REF 303
310	670	-		4	CLASS R2	0.8	76	2.9	1	SIGN MOUNTED ON NEW 76mm POST IN THE SOUTHERN VERGE DIRECTLY OPPOSITE SIGN REF 303
311	906.1	-		1	CLASS R2	0.8	76	2.9	1	SIGN MOUNTED ON NEW 76mm POST 40m WEST OF THE JUNCTION AS SHOWN ON PLAN. SIGN TO FACE TRAFFIC HEADING EAST
312	906.1	-		1	CLASS R2	0.8	76	3.2	1	SIGN MOUNTED ON NEW 76mm POST 40m EAST OF THE JUNCTION IN THE SOUTHERN VERGE. AREA AS SHOWN ON PLAN. SIGN TO FACE TRAFFIC HEADING WEST. REPEATER SIGN REF 308 & 310 ARE TO BE MOUNTED BENEATH
313	944.1	-		1	CLASS R2	0.8	76	2.9	1	SIGN MOUNTED ON NEW 76mm POST 40m WEST OF THE JUNCTION IN THE SOUTHERN VERGE AS SHOWN ON PLAN
314	670	-		4	CLASS R2	0.8	76	-	-	SEE REMARKS SIGN MOUNTED BACK TO BACK WITH SIGN REF 301 AND 302
315	670	-		4	CLASS R2	0.8	76	-	-	SEE REMARKS SIGN MOUNTED IN PLACE OF REMOVED SIGN REF 101. WEST THIRSTON TOWARDS
316	670	-		4	CLASS R2	0.8	76	2.75	1	SIGN MOUNTED ON NEW 76mm POST IN THE SOUTHERN VERGE 40m EAST OF THE END OF FIRST RED BAND ON THE APPROACH TO WEST THIRSTON
317	670	-		4	CLASS R2	0.8	76	2.75	1	SIGN MOUNTED ON NEW 76mm POST IN THE SOUTHERN VERGE 7m EAST FROM THE BRIDGE TRAVEL
318	670	-		4	CLASS R2	0.8	76	2.75	1	SIGN MOUNTED ON NEW 76mm POST IN THE SOUTHERN VERGE 7m EAST FROM THE BRIDGE TRAVEL
319	670	-		4	CLASS R2	0.8	76	2.75	1	SIGN MOUNTED ON NEW 76mm POST IN THE SOUTHERN VERGE 7m EAST FROM THE BRIDGE TRAVEL
320	944.1	-		2	CLASS R2	0.8 x 0.31 OVERALL SIZE OF GREY BACKING BOARD 0.74 x 1.02 (0.75m x 0.31m)	76	3.300	1	SEE REMARKS SIGN MOUNTED ON NEW 76mm POST IN THE SOUTHERN VERGE OPPOSITE THE WESTERN END OF THE NORTHERN FOOTING. SIGN TO FACE TRAFFIC HEADING WEST EXTENSION INSTALLED ON EXISTING POST WITH SIGN MOUNTED ON IT. BANNING SIGN MOUNTED TO TOP OF POST EXTENSION. NEW SIGN MOUNTED BACK TO BACK FROM TRAFFIC HEADING EAST.

ROAD MARKINGS SCHEDULE									
REF.	CODE	PART	ITEM	DWG. NO.	DIAGRAM	MARK (mm)	GAP (mm)	WIDTH (mm)	USE
A	10	2	B	1000		7000	-	1500	LARGE 30 ROUND
B	10	2	B	1000		4300	-	1500	SMALL 30 ROUND
C	11	4	15	1004		1400	-	-	SLOPE WARNING
D	-	-	-	-		TRANSVERSE	-	1000	THE RED BAND OF RED HP/L 1m FROM MARKS A, C & L
E	-	-	-	-		SEE DRAGONS TEETH DETAIL	-	-	DRAGONS TEETH
F	11	4	3	1004.1		4000	3000	100	WARNING LINE OUTSIDE OF 30mph LIMITS
G	11	4	3	1004		4000	2000	100	WARNING LINE WITHIN 30mph LIMITS
H	9	6	3	1005A		800	300	200	GIVE WAY LINES
I	11	4	8	1009A		800	300	100	ONE WAY EXTENSION
J	9	6	4	1005A		3700	-	1200	ONE WAY TRIANGLE
K	10	2	B	1000		7000	-	1500	LARGE 30 ROUND
L	11	4	10	1010		1000	1000	100	EDGE OF CARRIAGEWAY AT ACCESS
M	-	-	-	-		SEE RED APPROACH BAND DETAIL	-	-	RED APPROACH BAND

ALL SIGNS ARE TO USE THE BELOW FOUNDATION DETAIL WHERE POSSIBLE. SIGNS 301/302/303/304 ARE TO HAVE THE FOUNDATION SHOWN ON INDIVIDUAL DETAILS.



Contract No. 2
Drawing No. A1

Northumberland County Council

Technical Services

PRELIMINARY

NORTHUMBERLAND COUNTY COUNCIL
COUNTY HALL, NORPETH
NORTHUMBERLAND, NE21 2EP

B6345 - EAST THIRSTON
30mph SPEED LIMIT

SCHEDULES AND DETAILS

Scale: 1:1000, AS SHOWN

HE223608