



# Northumberland County Council

## **RECORD OF DECISION TAKEN BY SERVICE DIRECTOR - LOCAL SERVICES**

**Paul Jones**

**16 September 2020**

---

### **Proposed 20 MPH, 30 MPH and 40 MPH Speed Limit Restriction in Stamfordham Village**

**Cabinet Member: Glen Sanderson - Environment & Local Services**

---

#### **Purpose of Report**

This report sets out the background to the proposed implementation of 20 MPH, 30 MPH and 40 MPH speed limits in Stamfordham Village.

#### **Recommendations**

It is recommended the changes to the 20 MPH, 30 MPH and 40 MPH speed limits in Stamfordham Village are introduced.

#### **Link to Corporate Plan**

Living - "We want you to feel safe, healthy and cared for"

Enjoying - "We want you to love where you live"

Learning - "We want you to achieve and realise your potential"

#### **Key Issues**

1. The changes to the 20 MPH speed limit adjacent to Stamfordham First School is in line with the County Council's current road safety policy.
2. This location would benefit from reduced vehicle speeds in the vicinity of Stamfordham School where Vulnerable Road Users (VRUs) are present.
3. The scheme is supported by County Councillor Jones, Stamfordham Parish Council and Stamfordham First School.

## Delegated Decision

---

### Background

#### **Introduction of 20 MPH, 30 MPH and 40 MPH Speed Limit changes to Stamfordham Village.**

The introduction of the speed limit changes in Stamfordham Village forms part of the 2019/20 Local Transport Plan. This is part of the County Council's road safety initiative to introduce 20 MPH speed limits adjacent to all schools in Northumberland provided it is feasible to do so. Anecdotal evidence suggests that measures of this kind adjacent to schools provide a safer environment for all road users.

In addition to the 20 MPH speed limits adjacent to the school, the design criteria recommends changes to the existing speed limits to facilitate this i.e. 30 MPH and 40 MPH speed limits - As detailed on the scheme plan in Appendix A.



#### **Grange Road Stamfordham northbound adjacent to Stamfordham First School.**

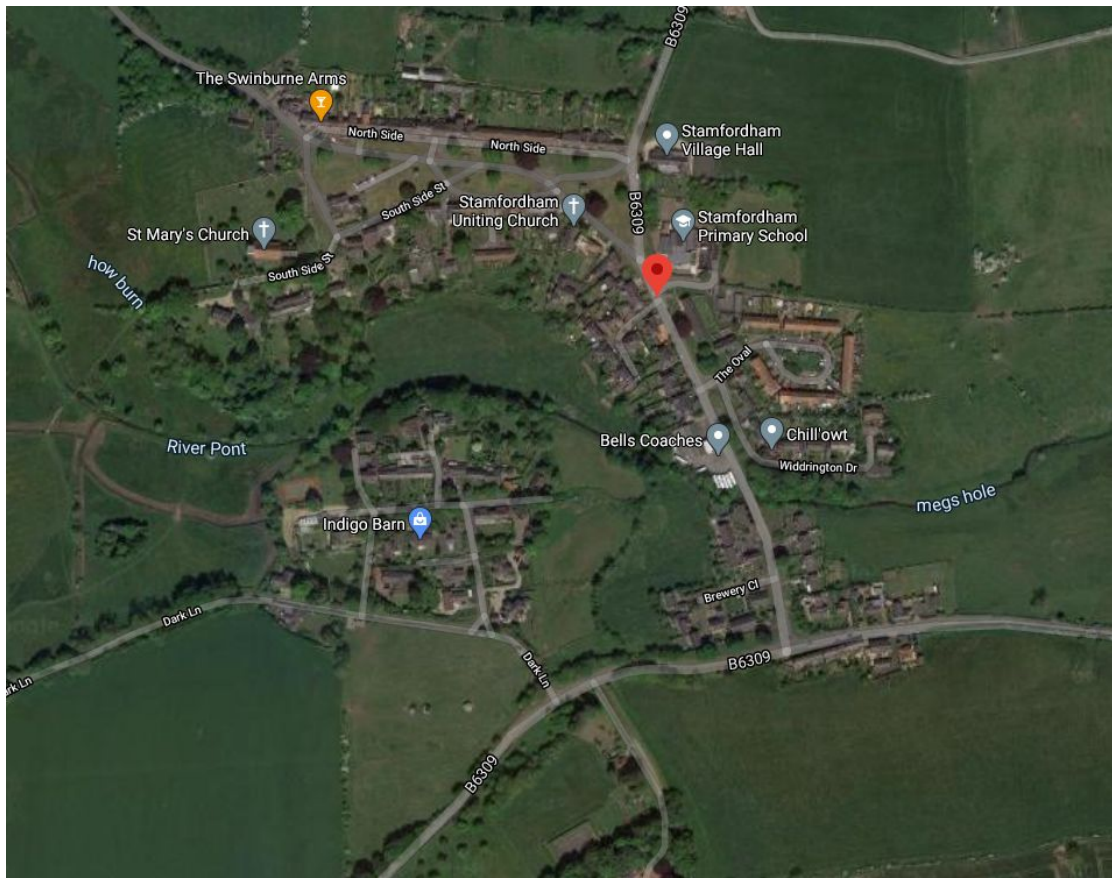
To facilitate these changes, the 20 MPH, 30 MPH and 40 MPH speed limits will be included in the new Traffic Regulation Order (TROM\_195) and revocation of existing Orders where applicable. Together with road marking and signage changes.

Details of the proposals are shown on the plan at Appendix A.

Council Officers have worked closely with County Councillor Jones, Stamfordham Parish Council and Stamfordham School on this scheme.

## Delegated Decision

---



### Stamfordham Village - satellite view

Local canvassing of the scheme was undertaken by the Parish Council and Local County Councillor.

Northumbria Police, other emergency services and relevant statutory consultees will be notified of these amendments as part of the process for making the permanent Orders.

## Delegated Decision

---

### Implications Arising out of the Report

<b>Policy</b>	Consistent with existing policies
<b>Finance and value for money</b>	Scheme will be financed from the 2020/21 Local Transport Plan
<b>Legal</b>	Traffic Regulation Orders (reference TROM_195)
<b>Procurement</b>	Signage and road markings to meet Regulations for Traffic Regulation Orders
<b>Human Resources</b>	None
<b>Property</b>	None
<b>Equalities</b> (Impact Assessment attached) Yes <input type="checkbox"/> No <input type="checkbox"/> N/A <input type="checkbox"/>	N/A
<b>Risk Assessment</b>	N/A
<b>Crime &amp; Disorder</b>	Speed limit schemes will reduce vehicle speeds and promote a safer environment in the area where the new speed limit are being introduced.
<b>Customer Consideration</b>	Residents in the area, parents and staff using the school will benefit from reducing vehicle speeds.
<b>Carbon reduction</b>	Reduced vehicle speeds can lead to reduced vehicle emissions and potential moving towards more sustainable forms of transport such as walking and cycling.
<b>Wards</b>	Ponteland West

## **Delegated Decision**

---

### **Background papers:**

File reference -

S:\Highways\PROJECT\19\HE Minor Improvements\HED19335 -  
Stamfordham Primary School 20mph limit\TRO and Notices

Appendix A – Scheme Plan/Location Plan -

### **Author and Contact Details**

---

Report Author     **Terry Luck - Programme Officer**

**Delegated Decision**

---

**DECISION TAKEN**

**Title of Officer:** Service Director, Local Services.

**Subject:** Proposed implementation of 20 MPH, 30 MPH and 40 MPH speed limits in Stamfordham Village.

**Consultation:** Not required for the introduction of changes to speed limits adjacent to Stamfordham School on road safety initiative. The scheme is supported by the local County Councillor and Northumbria Police.

**Decision Taken:** To introduce the changes to the 20 MPH, 30 MPH and 40 MPH speed limits in Stamfordham Village.

Signature of Director

.....

**Date**

.....

