



Northumberland

County Council

RECORD OF DECISION TAKEN BY SERVICE DIRECTOR - LOCAL SERVICES

Paul Jones

Highway Junction Improvements – Ratcliffe Road, Haydon Bridge

Cabinet Member: Glen Sanderson – Leader of Council

16 November 2020

Purpose of Report

This report sets out the background to the proposals to introduce ‘No Waiting or Loading at Any Time’ (double yellow lines and double kerb blips) restrictions in association with the new mini-roundabout at the B6319 Ratcliffe Road junction with Church Street, Haydon Bridge, along with new designated parking bays on the B6319 road to the east of this location over the bridge.

Recommendations

It is recommended that the proposed parking restrictions on Ratcliffe Road, Haydon Bridge, in association with the new junction improvement works are implemented in order to improve road safety in the area.

Link to Corporate Plan

Living – “We want you to feel safe, healthy and cared for”

Enjoying – “We want you to love where you live”

Key Issues

A new road layout is to be constructed at the Radcliffe Road junction with Church Street in the form of a three-arm mini-roundabout, along with road safety improvements consisting of parking restrictions and new crossing points.

The scheme is supported by the local County Councillor (Councillor Sharp) and will be funded by the 2020/21 Local Transport Plan (LTP) programme.

Background

The B6319 road in the Haydon Bridge vicinity is a single carriageway subject to a 20 MPH speed limit, which is illuminated by street lighting at the location of the proposed works. A 'T-junction' is in place at its junction with Church Street where priority is given to motorists navigating through Ratcliffe Road and vehicles often have a significant wait to exit Church Street and manoeuvre onto the B road. The layout is also predominantly suited for vehicle priority, with no formal pedestrian crossing facilities present in a location where several local shops and businesses operate.



Figure 1: Existing road layout at the Radcliffe Road junction with Church Street

The junction improvement scheme consists of:

- Removing the existing splitter island at the junction of Ratcliffe Road and Church Street;
- Introduction of a new mini-roundabout at the junction;
- Provision of a new kerbline to the southern side of Ratcliffe Road to facilitate an improved crossing point on Church Street;
- Removal of a section of 'No Waiting at Any Time' restrictions to the west of Ratcliffe Road to allow an element of parking away from the junction;
- New traffic signs and road markings.

Proposals

Following concerns raised by local residents and the County Councillor regarding the existing parking arrangements, it is considered that further restrictions are needed as part of the scheme in order to discourage obstructive and indiscriminate parking at the junction. Existing 'No Waiting at Any Time' restrictions in place at the junction are shown in Figure 2. These are double yellow lines which prevent motorists from parking on that section of road, but Blue Badge holders may do so for up to 3 hours, provided a full obstruction of vehicular traffic does not occur because of it. Legislation dictates that enforcement can only be carried out on vehicles parked on double yellow lines after a five minute waiting period, but many vehicles are

Delegated Decision

observed to be abusing this facility when visiting the local shops as other kerbside space on Church Street is at full capacity.



Figure 2: Red lines showing existing 'No Waiting at Any Time' (double yellow lines) restrictions

As a result, 'No Loading' restrictions in the form of kerb blips are proposed to be added onto the existing 'No Waiting at Any Time' restrictions at the junction, which prohibits any vehicles from stopping on them. These are to apply at all times, with the exception of the section of road directly outside the Co-Operative Food store, where the loading ban will be in operation from Monday – Friday between the hours of 8.30am – 9.30am and 2.30pm – 4.30pm. The 'No Waiting' restriction in association with this loading ban will also be reduced from at all times to 8.30am – 4.30pm, therefore making it a new single yellow line. This is to allow the store to carry out deliveries directly outside the vicinity, following consultation with the businesses.

To the west of this junction where the double yellow lines extend to, it is proposed to remove a section of the restrictions and free up parking for residents. The area has been surveyed and analysed to ensure that any parking which may occur as a result of this removal would not have an adverse impact on road safety or the free flow of traffic on Ratcliffe Road. A Stage 2 Road Safety Audit was also carried out and did not raise any issues with this part of the proposal.

New designated parking bays are also to be marked out across the bridge east of this junction on the north side of the B6319 road, which are anticipated to free up parking space in residential areas such as Church Street, where kerbside space is currently in high demand.

Details of the proposals for the highway junction improvement works are shown on the plans at Appendix A. The parking restrictions associated with

Delegated Decision

the works are intended to maintain the free flow of traffic where possible, to improve road safety around the junction and to protect the amenity of the area overall.

Northumbria Police, other emergency services and relevant statutory consultees will be notified of these amendments as part of the process for making the permanent Orders.

Delegated Decision

Implications Arising out of the Report

Policy	Consistent with existing policies.
Finance and value for money	Scheme will be financed through the LTP 2020/21 Programme
Legal	Motorists will be required to comply with the Traffic Regulation Orders (TRO_007_75).
Procurement	Road markings and associated traffic signs to meet Regulations for Traffic Regulation Orders.
Human Resources	None
Property	None
Equalities (Impact Assessment attached) Yes <input type="checkbox"/> No <input type="checkbox"/> N/A <input type="checkbox"/>	N/A
Risk Assessment	The parking proposals are designed to reduce the risks associated with obstructive and indiscriminate parking.
Crime & Disorder	Regulations in place to carry out enforcement
Customer Consideration	Statutory consultees have been consulted
Carbon reduction	Junction improvements should reduce carbon emissions from stationary queuing vehicles and parking restrictions can lead to a potential increase in the use of more sustainable forms of transport such as walking or cycling.
Wards	Haydon and Hadrian

Delegated Decision

Background Papers:

File reference – S:\Highways\PROJECT\19\HF Local Safety Schemes\HFD19501 Ratcliffe Road area, Haydon Bridge

Appendix A – Scheme Plan

Author and Contact Details

Report Author – **William Binks, Programme Officer**

Delegated Decision

DECISION TAKEN

Title of Officer: Service Director, Local Services

Subject: Highway junction improvement works at Ratcliffe Road, Haydon Bridge.

Consultation: Not required on the grounds of road safety, although representatives and the Local County Councillor have been involved in the design process throughout.

Decision Taken: To introduce the new parking restrictions at Ratcliffe Road, Haydon Bridge.

Signature of Director



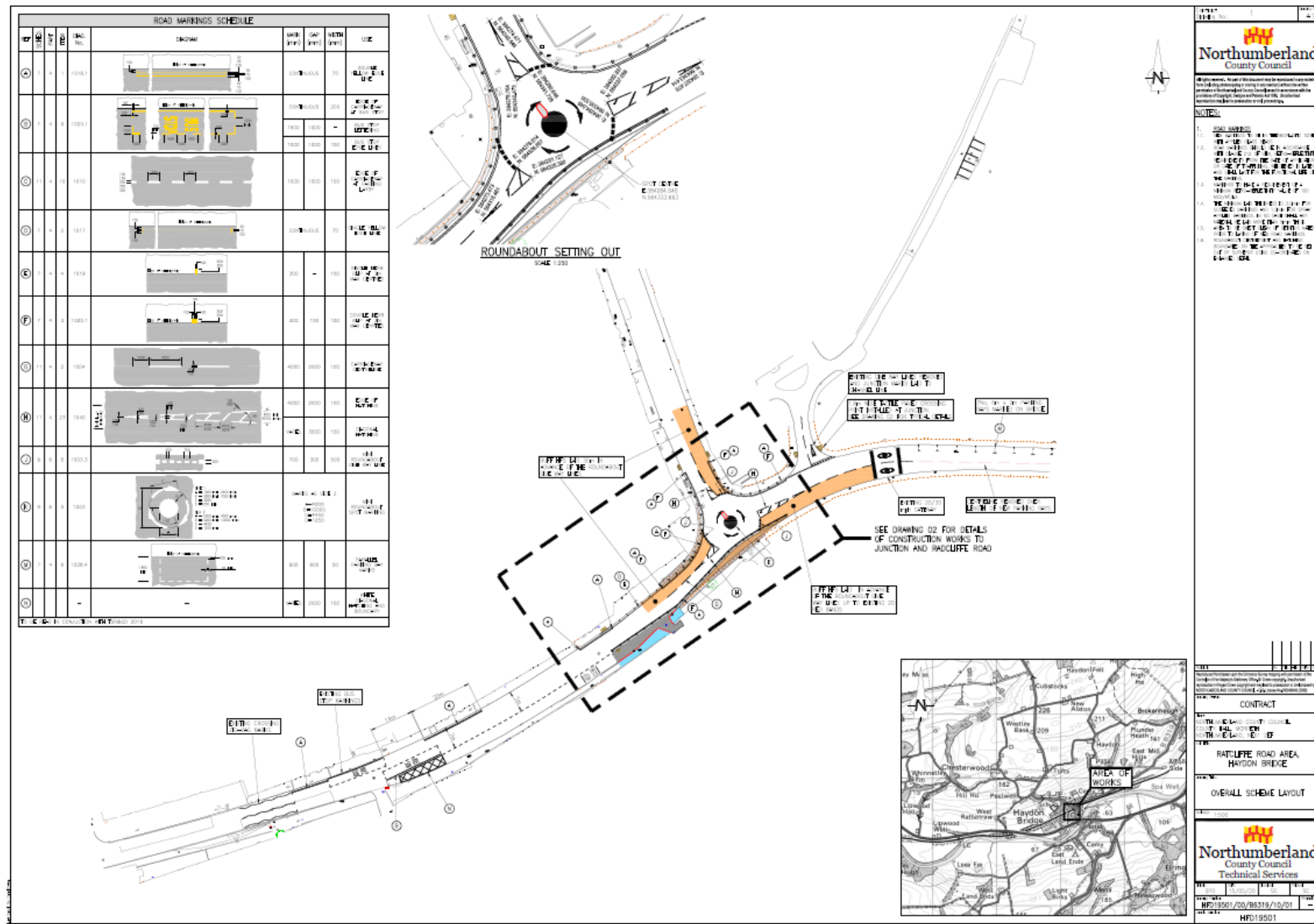
Date

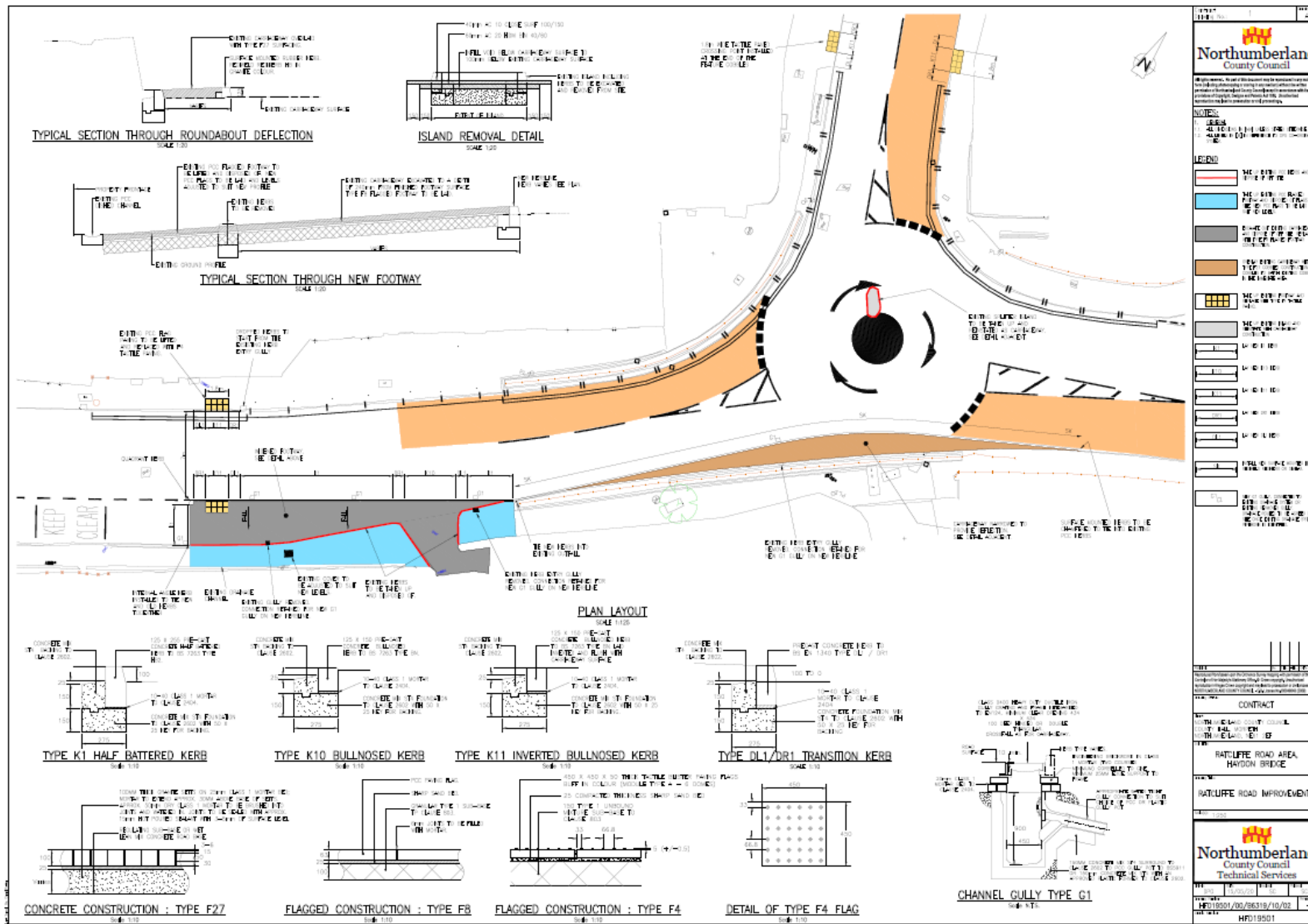
17th November 2020

Delegated Decision

Appendix A - Scheme Plan

Delegated Decision





Northumberland County Council

Notes: All dimensions shown are to be maintained unless otherwise stated. The contractor shall be responsible for the stability of any existing structures and shall take all necessary precautions to prevent any damage to such structures. The contractor shall be responsible for the stability of any existing structures and shall take all necessary precautions to prevent any damage to such structures.

LEGEND

- MEASUREMENT OF DISTANCE TO THE CENTERLINE
- MEASUREMENT OF DISTANCE TO THE OUTER EDGE OF THE ROAD
- MEASUREMENT OF DISTANCE TO THE INNER EDGE OF THE ROAD
- MEASUREMENT OF DISTANCE TO THE CENTERLINE OF THE ROAD
- MEASUREMENT OF DISTANCE TO THE OUTER EDGE OF THE ROAD
- MEASUREMENT OF DISTANCE TO THE INNER EDGE OF THE ROAD
- MEASUREMENT OF DISTANCE TO THE CENTERLINE OF THE ROAD
- MEASUREMENT OF DISTANCE TO THE OUTER EDGE OF THE ROAD
- MEASUREMENT OF DISTANCE TO THE INNER EDGE OF THE ROAD
- MEASUREMENT OF DISTANCE TO THE CENTERLINE OF THE ROAD
- MEASUREMENT OF DISTANCE TO THE OUTER EDGE OF THE ROAD
- MEASUREMENT OF DISTANCE TO THE INNER EDGE OF THE ROAD

CONTRACT

RATCLIFFE ROAD AREA, HAYDON BRIDGE

RATCLIFFE ROAD IMPROVEMENTS

Northumberland County Council Technical Services

HRD19501/00/86319/10/03

HRD19501

Delegated Decision

NEW TRAFFIC SIGNS (300 SERIES)										
REF	STANDARD SIGN NO.	7M HEIGHT (MM)	IEBID	NO. OF	TRAFFIC RULE	APPROX. SIGN AREA (SQ. METERS)	POSTS / SIGNS	NO.	HEIGHT (MM)	REMARKS
301	-	30	Medium A-MAN (A490)	1	Charterford Post Office	1.000 (1.000)	1/1	1.000	3.0	REPLACE EXISTING SIGN WITH NEW SIGN
302	-	30	Charterford Post Office	1	Charterford Post Office	1.000 (1.000)	1/1	1.000	3.0	REPLACE EXISTING SIGN WITH NEW SIGN
303	-	30	Medium A-MAN (A490)	1	Charterford Post Office	1.000 (1.000)	1/1	1.000	3.0	REPLACE EXISTING SIGN WITH NEW SIGN
304	8113	-	Blue	1	Blue	0.800 (0.800)	-	-	3.0	REPLACE EXISTING SIGN WITH NEW SIGN
305	8113	-	Blue	1	Blue	0.800 (0.800)	-	-	3.0	REPLACE EXISTING SIGN WITH NEW SIGN
306	8113	-	Blue	1	Blue	0.800 (0.800)	1/1	0.800	3.0	REPLACE EXISTING SIGN WITH NEW SIGN
307	-	30	Prohibition No Entry (A490)	1	Prohibition No Entry	1.000 (1.000)	1/1	1.000	3.0	REPLACE EXISTING SIGN WITH NEW SIGN
308	-	30	Prohibition No Entry (A490)	1	Prohibition No Entry	1.000 (1.000)	1/1	1.000	3.0	REPLACE EXISTING SIGN WITH NEW SIGN
309	-	30	Prohibition No Entry (A490)	1	Prohibition No Entry	1.000 (1.000)	1/1	1.000	3.0	REPLACE EXISTING SIGN WITH NEW SIGN
310	-	30	Blue	1	Blue	0.800 (0.800)	-	-	3.0	REPLACE EXISTING SIGN WITH NEW SIGN

TEMPORARY TRAFFIC SIGNS (400 SERIES)										
REF	STANDARD SIGN NO.	7M HEIGHT (MM)	IEBID	NO. OF	TRAFFIC RULE	APPROX. SIGN AREA (SQ. METERS)	POSTS / SIGNS	NO.	HEIGHT (MM)	REMARKS
401	7014	-	Red	3	Red	0.800 (0.800)	1/3	0.800	3.0	REPLACE EXISTING SIGN WITH NEW SIGN

TRAFFIC SIGNS TO BE REMOVED (100 SERIES)										
REF	STANDARD SIGN NO.	7M HEIGHT (MM)	IEBID	NO. OF	TRAFFIC RULE	APPROX. SIGN AREA (SQ. METERS)	POSTS / SIGNS	NO.	HEIGHT (MM)	REMARKS
101	-	-	Medium A-MAN (A490)	-	Charterford Post Office	-	-	-	-	REPLACE EXISTING SIGN WITH NEW SIGN
102	-	-	Charterford Post Office	-	Charterford Post Office	-	-	-	-	REPLACE EXISTING SIGN WITH NEW SIGN
103	-	-	Charterford Post Office	-	Charterford Post Office	-	-	-	-	REPLACE EXISTING SIGN WITH NEW SIGN
104	-	-	Prohibition No Entry (A490)	-	Prohibition No Entry	-	-	-	-	REPLACE EXISTING SIGN WITH NEW SIGN
105	-	-	Blue	-	Blue	-	-	-	-	REPLACE EXISTING SIGN WITH NEW SIGN
106	-	-	Blue	-	Blue	-	-	-	-	REPLACE EXISTING SIGN WITH NEW SIGN

CONCRETE IN TYPICAL LAYER

CONCRETE IN TYPICAL LAYER

CONCRETE IN TYPICAL LAYER

Northumberland County Council

CONTRACT

WITH THE COUNTY COUNCIL

FOR THE

RATTLIFFE ROAD AREA

HAYDON BRIDGE

TRAFFIC SIGN LAYOUT

Northumberland County Council
Technical Services

REF: 15/0001/16

DATE: 15/05/2016

REF: 15/0001/00/86318/10/03

REF: 15/0001