



Northumberland

County Council

RECORD OF DECISION TAKEN BY SERVICE DIRECTOR - LOCAL SERVICES

Paul Jones

Introduction of new 20 MPH Speed Limit Restriction at Heddon-on-the Wall First School

21 November 2018

Cabinet Member: Glen Sanderson - Environment & Local Services

Purpose of Report

This report sets out the background to the proposed implementation of a new 20 MPH speed limit adjacent to Heddon-on-the Wall St Andrew's C E Primary School.

Recommendations

It is recommended that a new permanent 20 MPH Speed Limit is introduced adjacent to Heddon-on-the Wall St Andrew's C E Primary School and surrounding streets (including amendments to existing adjacent speed limits to accommodate this proposal).

In addition new advisory: "20 when light flashing" signage will be erected on the B6528 Hexham Road. This element of the scheme also includes amendments to the existing adjacent speed limit to accommodate this proposal.

Link to Corporate Plan

Living - "We want you to feel safe, healthy and cared for"

Enjoying - "We want you to love where you live"

Learning - "We want you to achieve and realise your potential"

Key Issues

1. Provision of 20 MPH speed limit adjacent to Heddon-on-the Wall St Andrew's C E Primary School, in line with County Policy.
2. Advisory 20 MPH speed limit when lights flash signage, being introduced adjacent to school.

Delegated Decision

3. New 40 MPH speed limit being introduced to create “a buffer zone” at entry to village to encourage reduced vehicular speeds in the village
4. The scheme is supported by Councillor Peter Jackson and Heddon-on-the-Wall Parish Council.

Background

Introduction of 20 MPH Speed Limit

The introduction of a 20 MPH Speed Limit adjacent to Heddon-on-the Wall St Andrew's C E Primary School is part of the 2018/19 LTP. This is part of the County Council's road safety initiative to introduce 20 MPH speed limits adjacent to all schools in Northumberland, provided that it is feasible to do so.

A permanent 20 MPH speed limit is being introduced adjacent to Heddon-on-the Wall St Andrew's C E Primary School and extending into the residential estate, which are the key approach routes to the school. In addition advisory 20 MPH speed limit when flashing signage, is being introduced adjacent to the school on the B6528. Finally a new 40 MPH speed limit is being introduced on the B6528 at the western end of the village to encourage reduced vehicular speeds as they enter the village.

Details of the proposals are shown on the plan at Appendix A.

Council Officers have worked closely with Heddon-on-the-Wall Parish Council and Councillor Jackson on the scheme.

Northumbria Police, other emergency services and relevant statutory consultees were notified of these amendments as part of the process for making the permanent Orders.

Delegated Decision



Delegated Decision

Implications Arising out of the Report

| | |
|---|---|
| Policy | Consistent with existing policies |
| Finance and value for money | Scheme will be financed from LTP 2018/19 |
| Legal | Traffic Regulation Orders (reference TROM_143) |
| Procurement | Signage and road markings to meet Regulations for Traffic Regulation Orders |
| Human Resources | None |
| Property | None |
| Equalities (Impact Assessment attached) Yes <input type="checkbox"/> No <input type="checkbox"/> N/A <input type="checkbox"/> | N/A |
| Risk Assessment | None |
| Crime & Disorder | Regulations in place to carry out enforcement. |
| Customer Consideration | A reduction in speed will lead to a safer environment for all road users. |
| Carbon reduction | Speed reduction assists with carbon reduction |
| Wards | Ponteland South with Heddon |

DECISION TAKEN

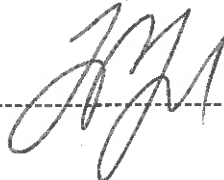
Title of Officer: Service Director, Local Services

Subject: Proposed implementation of a new 20 MPH speed limit adjacent to Heddon-on-the Wall St Andrew's C E Primary School.

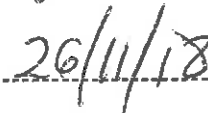
Consultation: Not required for proposed implementation of a new 20 MPH speed limit adjacent to Heddon-on-the Wall St Andrew's C E Primary School – proposal part of LTP 2018/19 and supported by Local County Councillor, Parish Council and notified to Northumbria Police.

Decision Taken: Introduction of a new 20 MPH speed limit adjacent to Heddon-on-the Wall St Andrew's C E Primary School.

Signature of Director

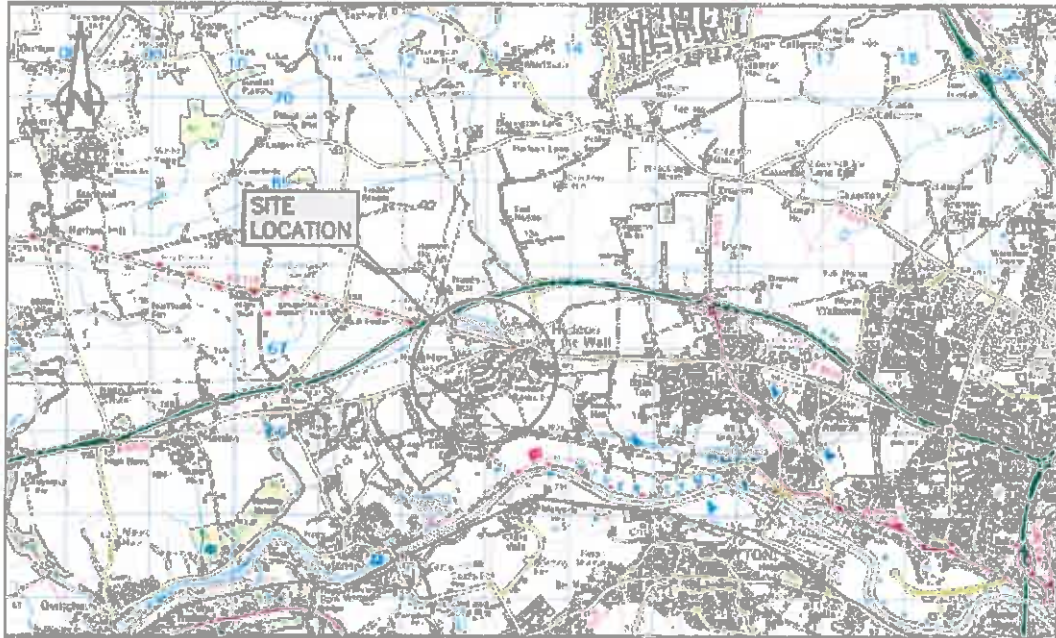


Date



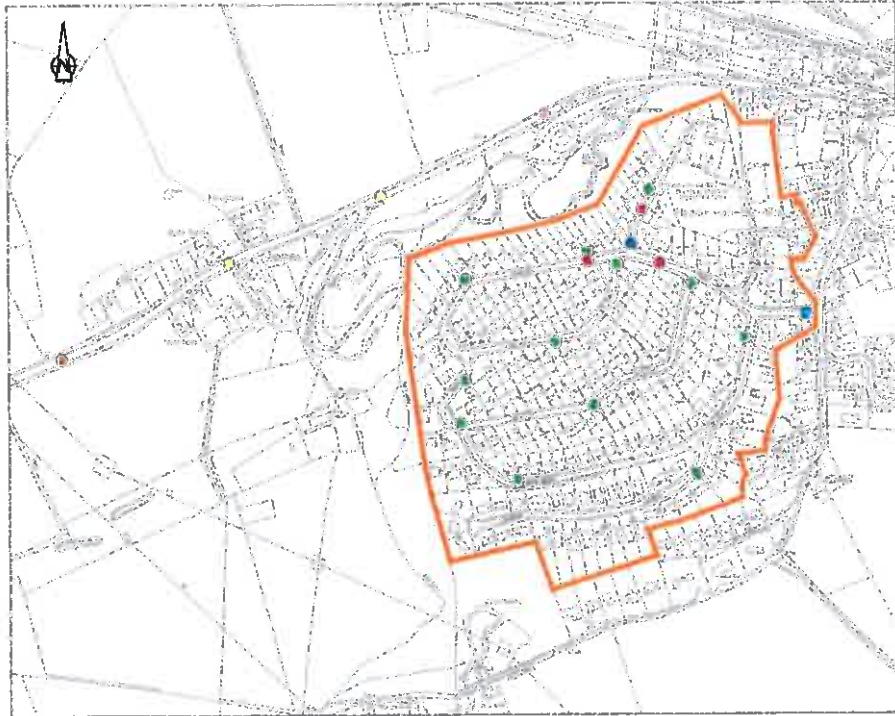
Delegated Decision

Appendix A



LOCATION PLAN Scale 1/50,000

Delegated Decision



SIT. PLAN
Scale 1/2500

CONTRACT
DRAWING No. 01 | A1



Every contract is subject to the terms and conditions of the Council's Standard Contract for the provision of services. The Council's Standard Contract is available on the Council's website. The Council's Standard Contract is available on the Council's website.

- KEY**
- ▭ BOUNDARY OF PROPOSED Change SPEED LIMIT
 - PROPOSED Change ENTRY SIGN (TYPE 23 & 20) (MOUNTED ROAD SIDEWAYS)
 - PROPOSED Change REQUEST SIGN (MOUNTED SIDEWAYS)
 - PROPOSED SLOW ROAD MARKING
 - PROPOSED Change REQUEST SIGN (MOUNTED SIDEWAYS)
 - PROPOSED Change ENTRY LAYOUT SIGN (TYPE 23 & 20) (MOUNTED SIDEWAYS)
 - PROPOSED Change REQUEST SIGN (MOUNTED SIDEWAYS)