

Objective 1

Direct route between Hexham and Corbridge.

Objective 2

Greater choice of sustainable modes of transport.

Objective 3

Proposals respond to unmet and future demand for cycling infrastructure.

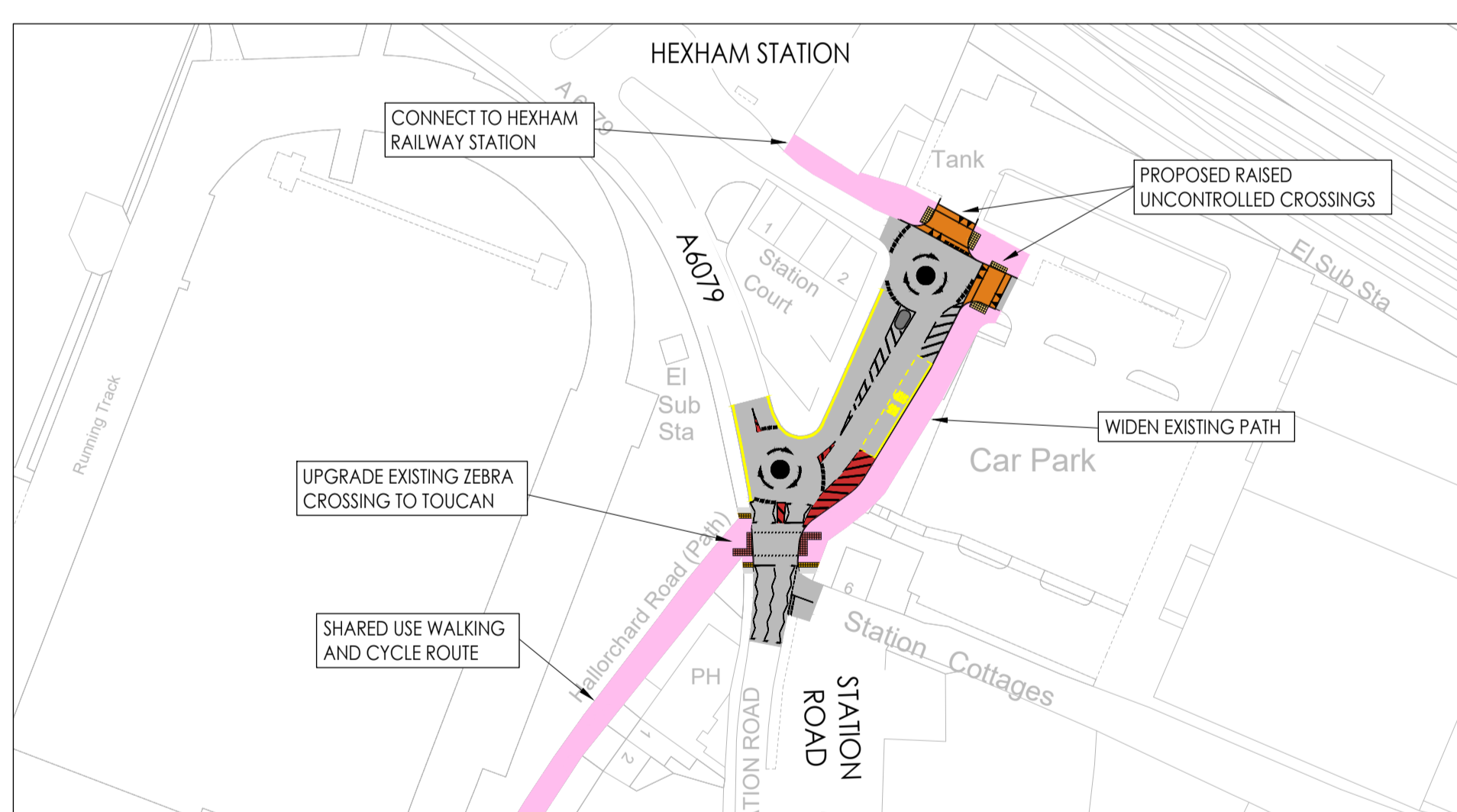
Objective 4

Protection for cyclists and pedestrians from motor vehicles.

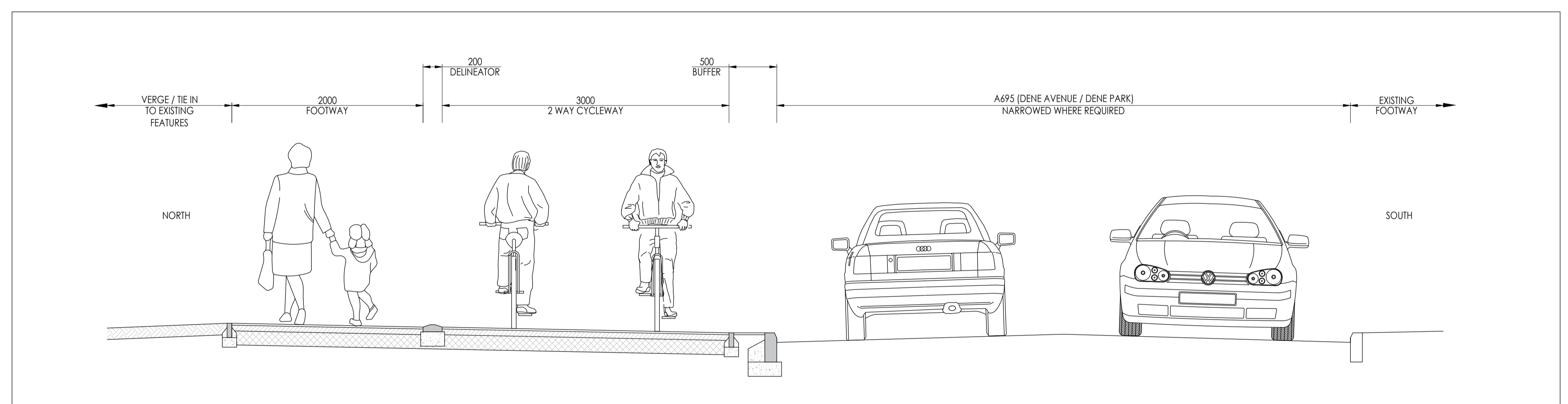


SCHEME KEY

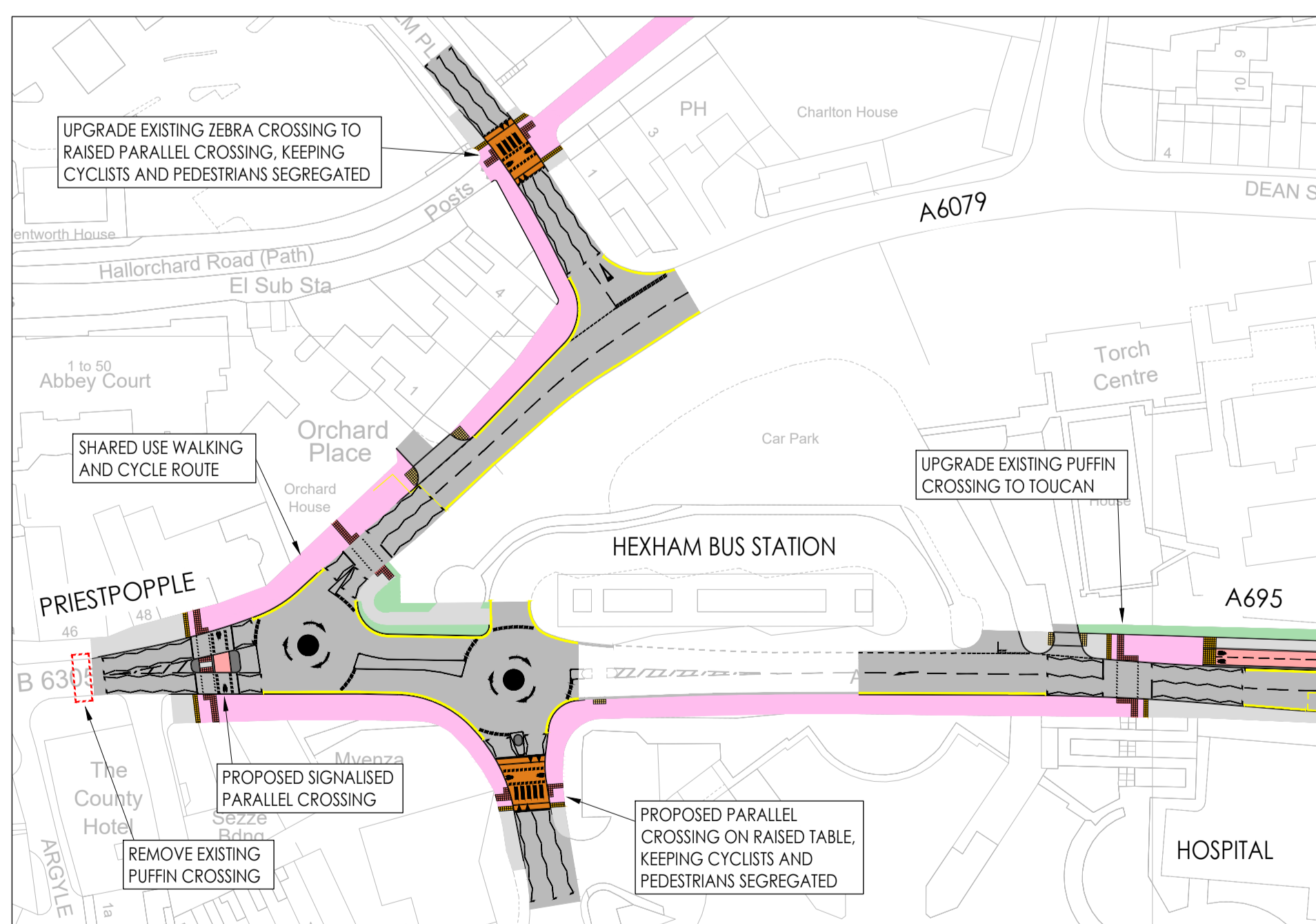
- SEGREGATED CYCLEWAY
3m WIDE TWO WAY CYCLEWAY & 2m WIDE FOOTWAY
- SHARED USE PATH
CYCLISTS AND PEDESTRIANS
- FOOTWAY
- CONTROLLED CROSSING
- UNCONTROLLED CROSSING
- PEDESTRIAN/CYCLIST PRIORITY OVER VEHICLES AT JUNCTIONS



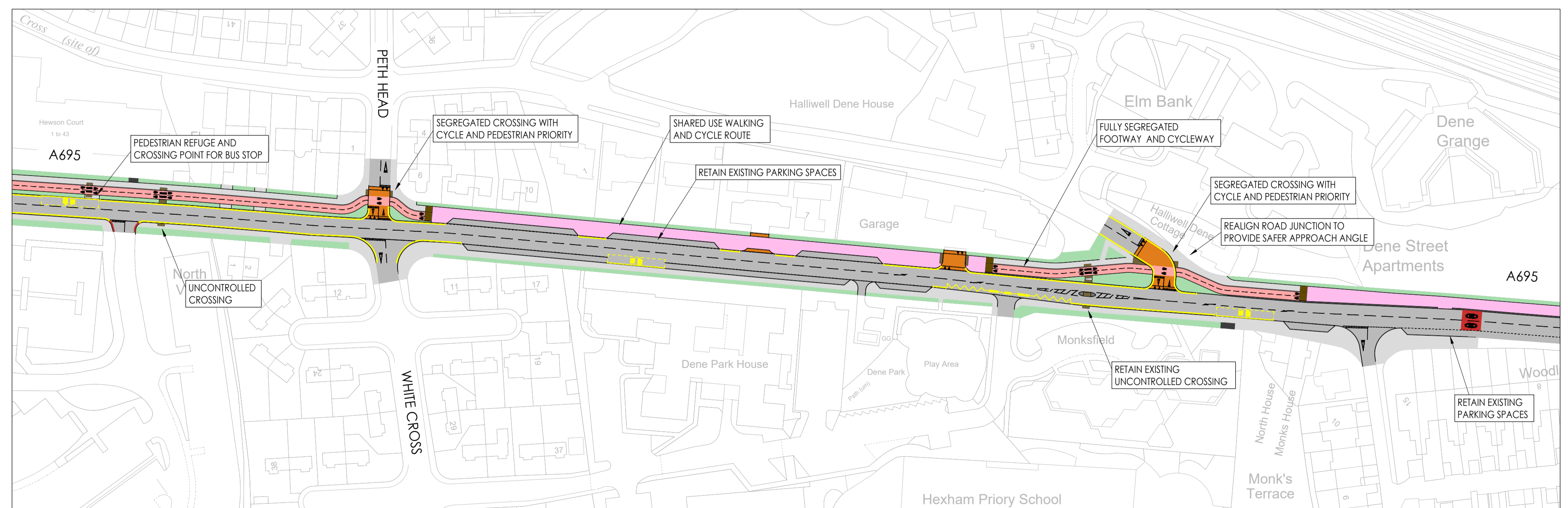
A HEXHAM STATION / TYNE VALLEY RETAIL PARK



TYPICAL SEGREGATED CROSS SECTION
SEGREGATED CARS, CYCLES AND PEDESTRIANS



B PRIESTPOPPLE / HEXHAM BUS STATION



C PETH HEAD / WHITE CROSS / HEXHAM PRIORY SCHOOL

VISION

The project will create a cycling and walking corridor connecting Hexham to Corbridge. The corridor will connect key locations including Hexham Station, Hexham General Hospital, Hexham Priory School and local businesses, and will enhance sustainable travel options for residents, workers, learners and visitors.

PROJECT AIMS

Key Investment Objectives

- Create a high-quality walking and cycling route between Hexham and Corbridge
- Improve access to employment and education opportunities.
- Reduce the necessity for residents to undertake journeys by private motor vehicles.
- Improve the health and wellbeing of residents by providing facilities that allow people to be more active.
- Reduce CO2 emissions and improve air quality by reducing the number of car journeys and thereby congestion.

PRIORITY CORRIDORS

Northumberland County Council have been successful in their bid for a government Levelling Up Funding (LUF) to deliver improved active travel infrastructure. The key objective for the Hexham to Corbridge corridor is to create improved segregated provision for pedestrians and cyclists fully compliant to the LTN-120 design standard. Active travel choices will allow residents and visitors to reduce their carbon emissions in line with Northumberland's target of carbon net zero by 2035 and improve wellbeing through the benefits of physical activity.

WHAT HAPPENS NEXT?

- Feedback from this event will be used to inform and refine the current design
- Detailed designs to be completed Autumn 2023 following consultation.
- Construction work on the corridor is likely to commence in 2024.