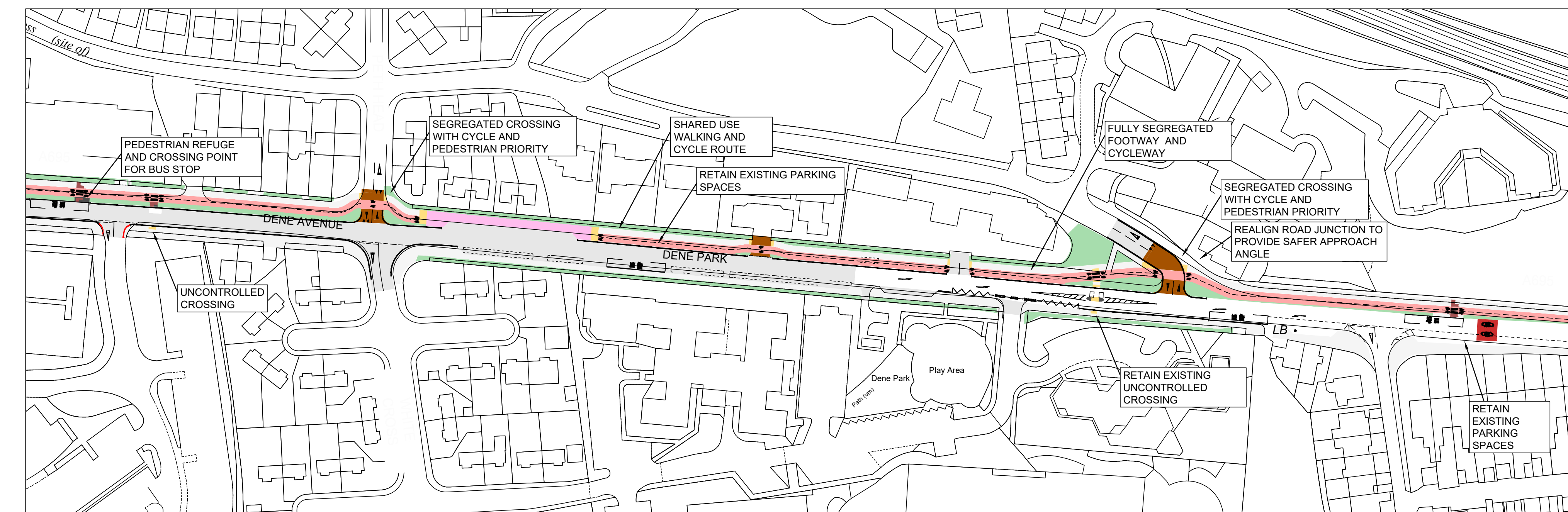
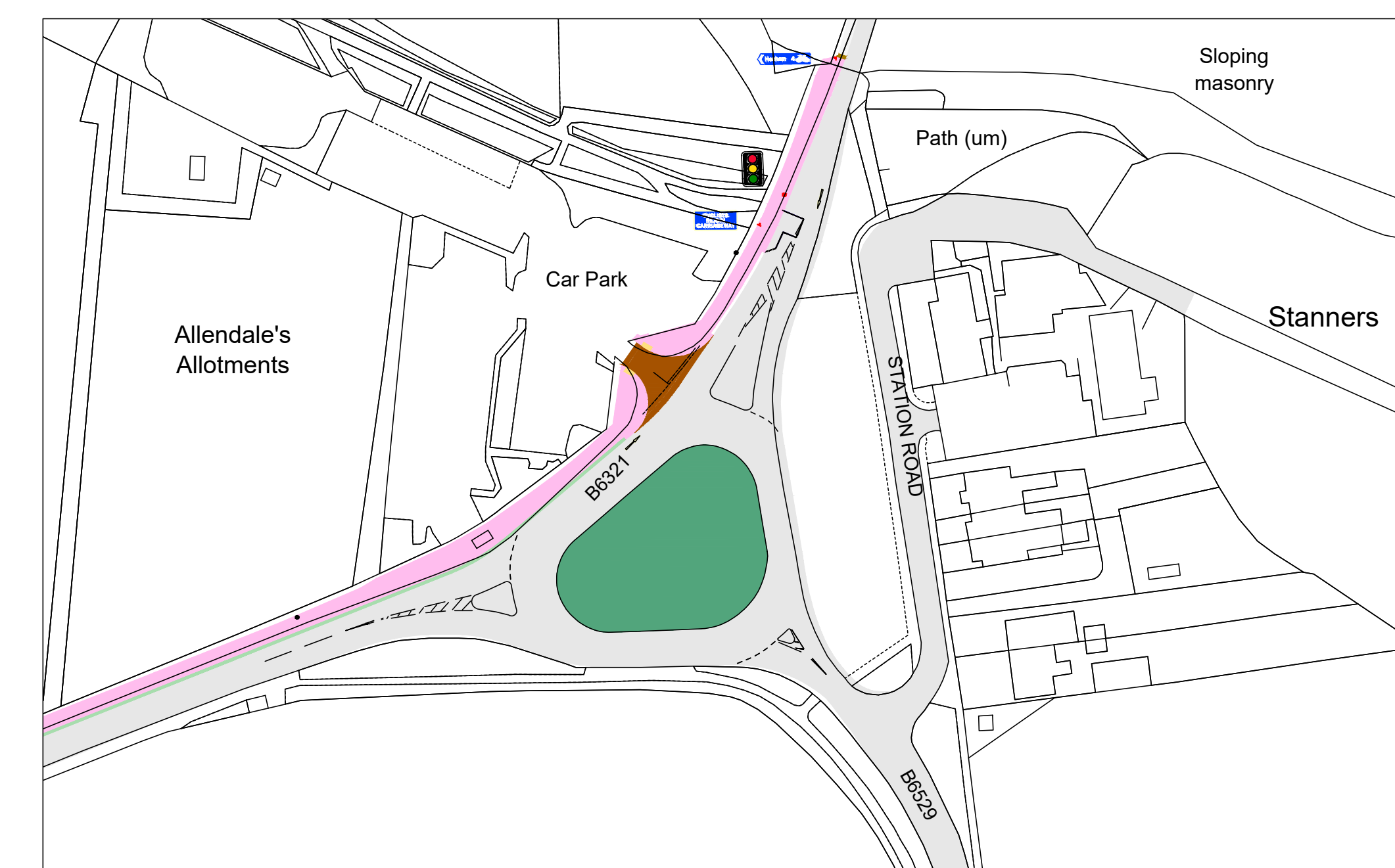


## Objective 4

Protection for cyclists and pedestrians from motor vehicles.



© PETH HEAD / WHITE CROSS / HEXHAM PRIORY SCHOOL



### TYPICAL SEGREGATED CROSS SECTION



## PROJECT AIMS

- ### KEY INVESTMENT OBJECTIVES
- Create a high-quality walking and cycling route between Hexham and Corbridge
  - Improve access to employment and education opportunities.
  - Reduce the necessity for residents to undertake journeys by private motor vehicles.
  - Improve the health and wellbeing of residents by providing facilities that allow people to be more active.
  - Reduce co2 emissions and improve air quality by reducing the number of car journeys and thereby congestion.