

SCALE 1:10 000

SYMBOLS

ROADS
 Road ———— Track ———— Path - - - -
 Where fenced shown by pecked lines.

RAILWAYS
 Cutting ———— Embankment ———— Multiple track ————
 Level Crossing ———— Foot Bridge ———— Single track ———— Standard gauge
 Road over ———— Siding, tramway or mineral line ————
 Road under ———— Narrow gauge

VEGETATION

Bracken	Marsh	Coppice
Rough grassland	Saltings	Orchard
Heath	Reeds	Coniferous trees
	Scrub	Non-coniferous trees

MISCELLANEOUS

Antiquity, (site of)	Lake, loch or pond
Boulders	Sloping masonry
Building	Chalk pit, clay pit or quarry
Electricity transmission line	Gravel pit
Glasshouse	Sand pit
Refuse or slag heap	Disused pit or quarry
	Triangulation station

Direction of flow of water ———— Shingle Sand

BOUNDARIES As notified to 1-9-76.

County (England and Wales), Region or Islands Area (Scotland)
District
London Borough
Civil Parish (England), Community (Wales)
Consistency (Co,Boro or Burgh)
Electoral Division or Ward

Imperial equivalents for metric boundary markings: 0.91m = 3ft. 1.22m = 4ft.
 Coincident boundaries are shown by the first appropriate symbol above, eg. Boro Cons. & ED Bdy.
 For Ordnance Survey purposes County Boundary is deemed to be the limit of the parish structure whether or not a parish area adjoins.

HEIGHTS (METRES)
 Values are given in metres above mean sea level at Newlyn.

ROCK FEATURES
 Loose rock, Boulders, Outcrop, Scree

CONVERSION SCALE
 Metres - Feet
 2000 Metres = 6500 Feet
 1000 Metres = 3280 Feet
 500 Metres = 1640 Feet
 100 Metres = 328 Feet

ABBREVIATIONS

BP,BS Boundary Post or Stone	Pol Sta Police Station
Ch Church	PC Post Office
CH Club House	PC Public Convenience
FE Sta Fire Engine Station	PH Public House
FB Foot Bridge	SB Signal Box
Fn Fountain	Spr Spring
GP Guide Post	TCB Telephone Call Box
MP Mile Post	TCP Telephone Call Post
MS Mile Stone	W Well

THE NATIONAL GRID REFERENCE SYSTEM
 TO GIVE A GRID REFERENCE CORRECT TO 100 METRES

EXAMPLE Shipley The grid letters on this sheet are NU

EASTING
 Take west edge of kilometre square in which point lies and read the large figures printed opposite this line on north and south margins. Estimate tenths eastwards.

NORTHING
 Take south edge of kilometre square in which point lies and read the large figures printed opposite this line on east and west margins. Estimate tenths northwards.

Full 100 metre reference NU 148169

The full reference, above, is unique. If grid letters are omitted, the resulting reference 148169 recurs at intervals of 100 kilometres. When the area concerned is sufficiently restricted, as will usually be the case with maps on scales of one inch to one mile and larger, the grid letters are normally omitted.

At the eastern edge of this sheet True North is 0° 13' West of Grid North and at the western edge 0° 09' West of Grid North. Magnetic North was about 8° West of Grid North in 1976 decreasing by about 2" in four years.

SURVEY DIAGRAM

ADJOINING SHEETS

NU 02 SE	NU 12 SW	NU 12 SE
NU 01 NE	NU 11 NW	NU 11 NE
NU 01 SE	NU 11 SW	NU 11 SE

1 square centimetre on this map represents 1 hectare (2.471 acres) on the ground.
 1 metre = 3.2808 feet
 1 foot = 0.3048 metre

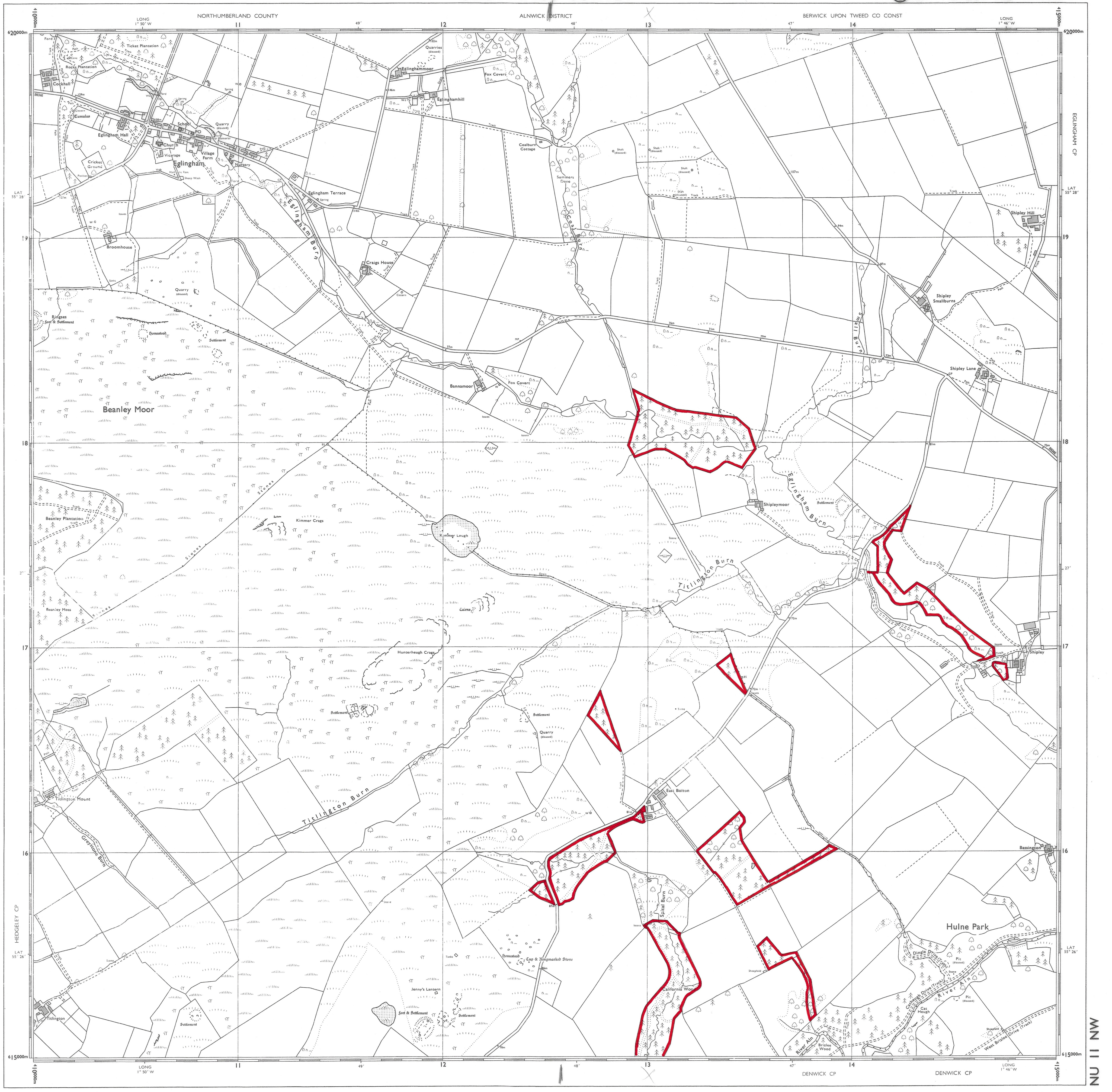
Surveyed at 1:2500 scale 1972-73. Revised for significant changes 1975. Contours surveyed 1973.

A booklet, *Place names on maps of Scotland and Wales*, is published by the Ordnance Survey, and includes a glossary of the most common Gaelic, Scandinavian and Welsh elements used on Ordnance Survey maps of Scotland and Wales.

The representation on this map of a road, track or path is no evidence of the existence of a right of way.

Made and published by the Director General of the Ordnance Survey, Southampton.

© Crown copyright 1976
 A

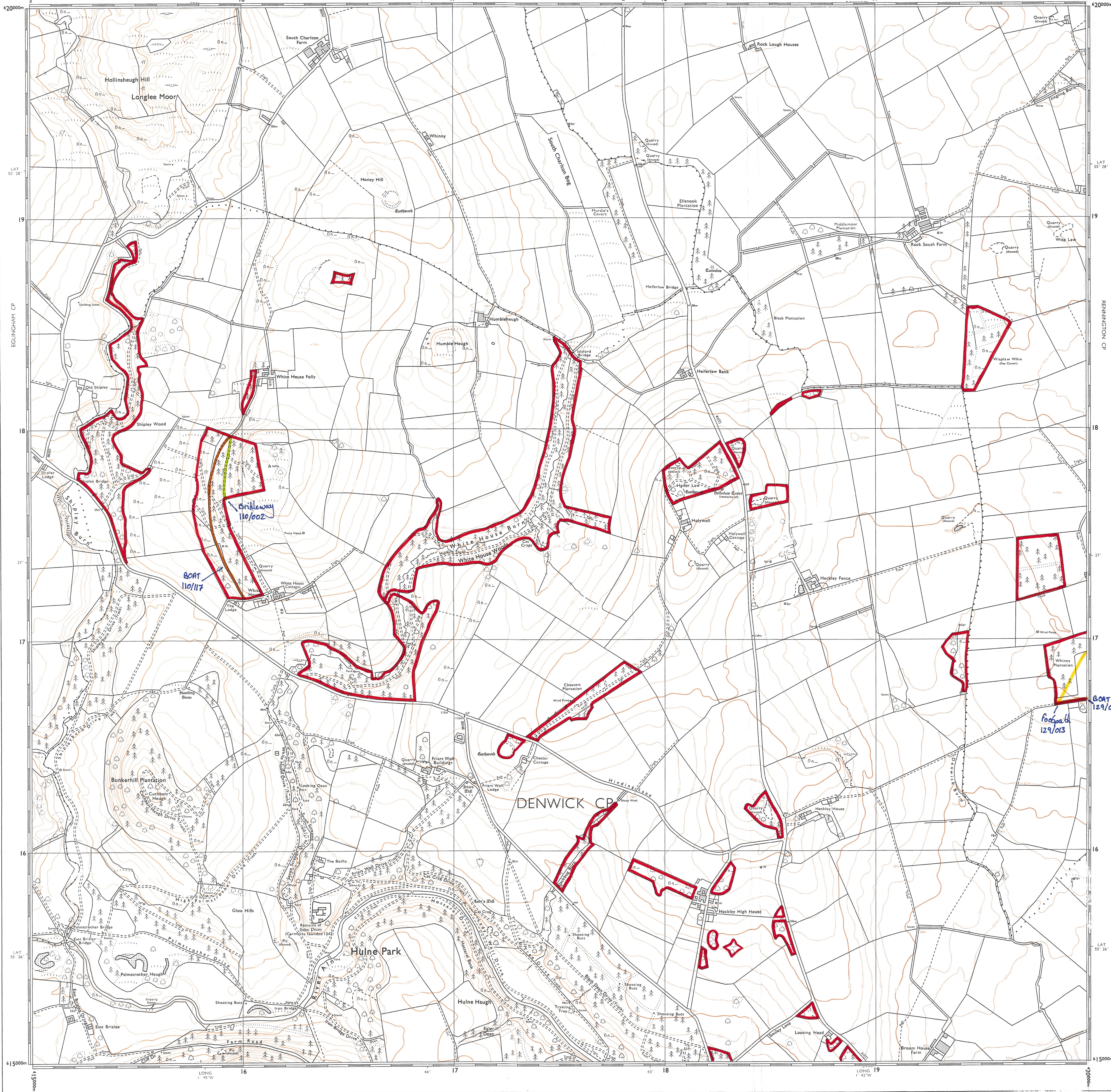


NORTHUMBERLAND COUNTY

ALNWICK DISTRICT

BERWICK UPON TWEE

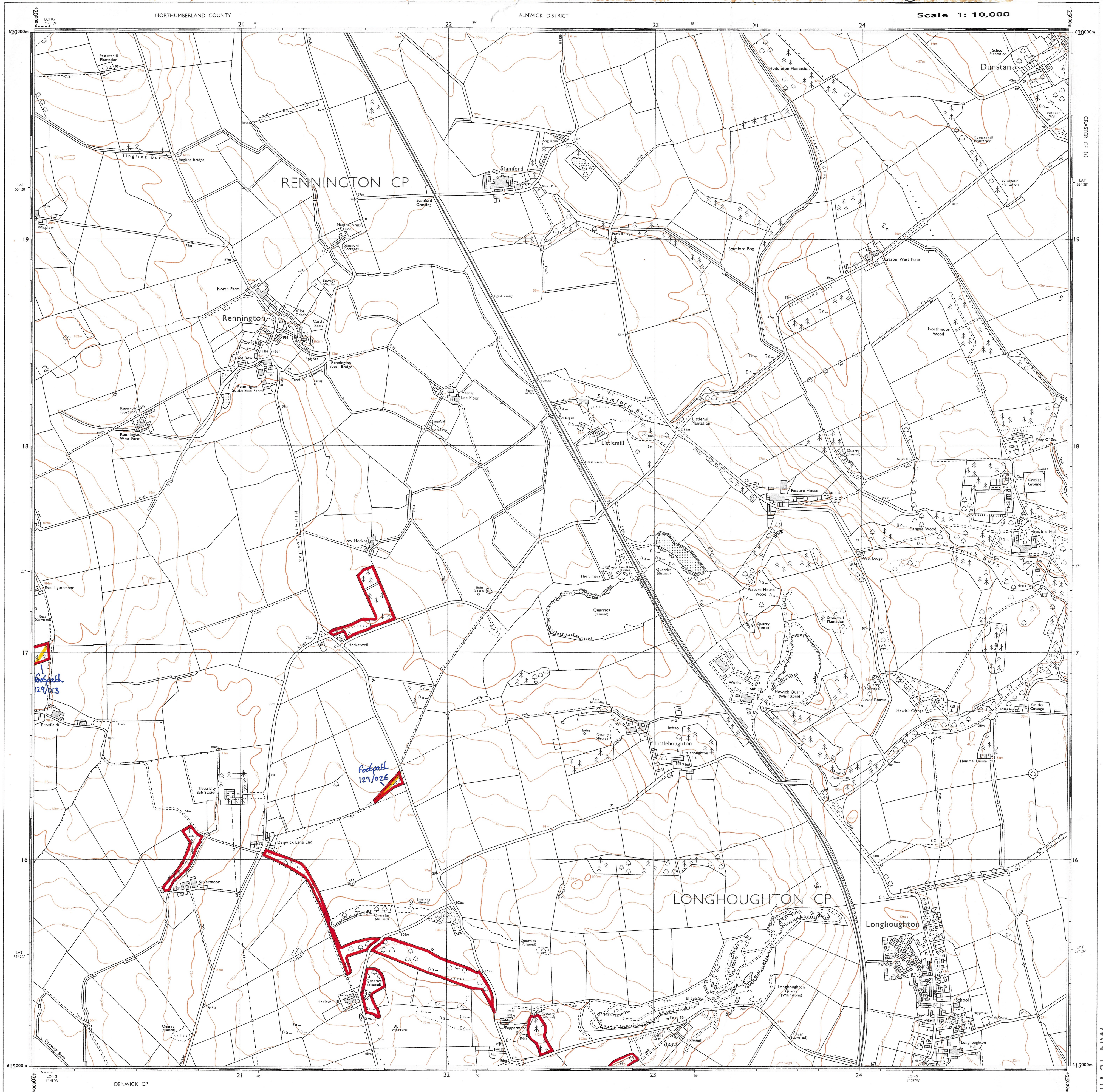
Scale 1: 10,000



Path
quarry
y
RSION
LE
- Feet
-5500
-6000
-5000
-4000
-3000
-2000
-1000
500
0
500 Feet
2808 feet
148 metre

LAT 55° 28'
19
18
17
16
LAT 55° 26'

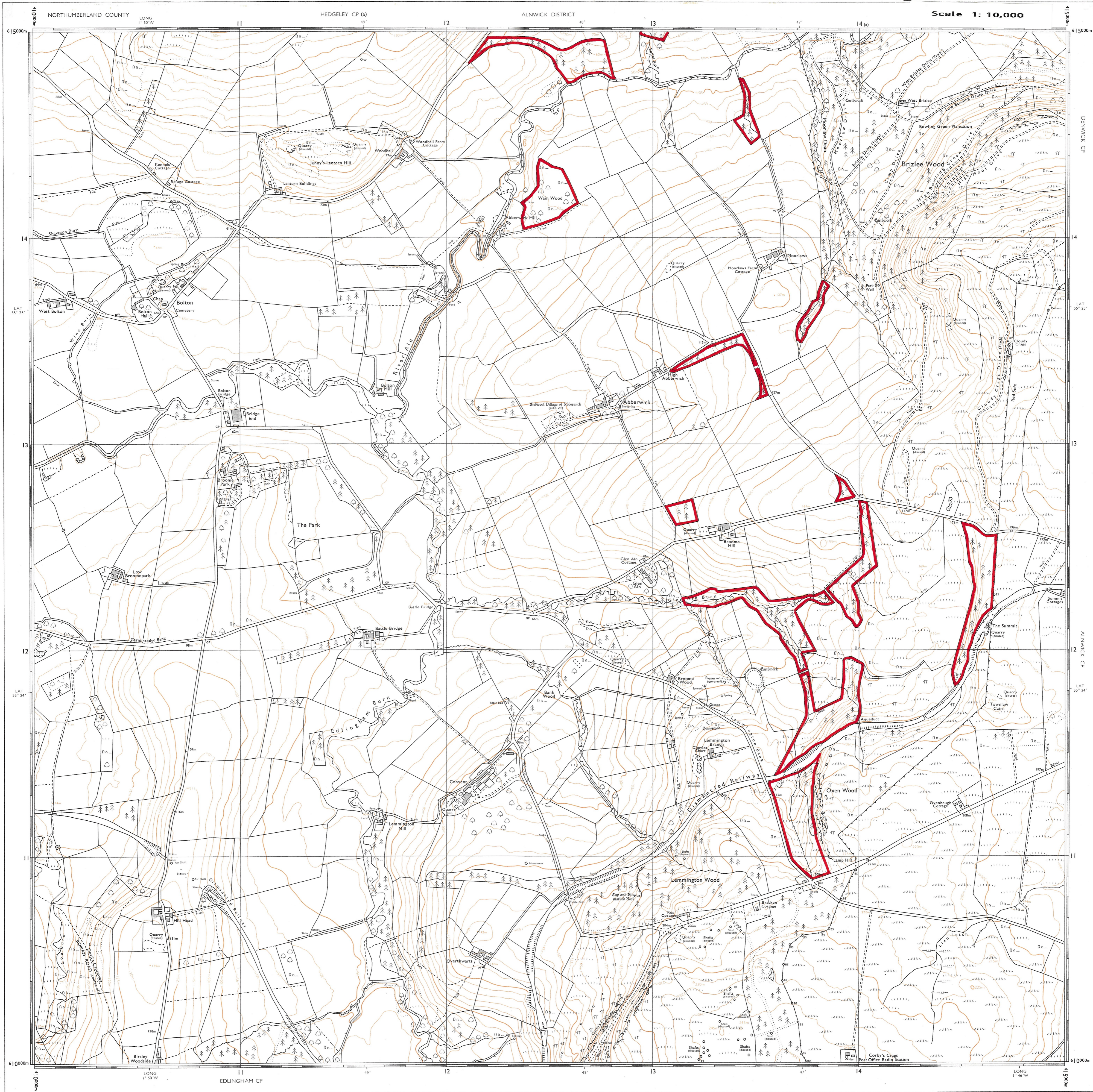
1011NE



620000m
 19
 18
 17
 16
 615000m
 LONG 1° 41' W
 DENWICK CP

620000m
 19
 18
 17
 16
 615000m
 LONG 1° 37' W
 CRASTER CP (A)

WN 12 UN



615000m
614000m
613000m
612000m
611000m
610000m

LAT 55° 25'
LAT 55° 24'

1500 Feet
1200 Feet
900 Feet
600 Feet
300 Feet
0 Feet
1500 Feet
1200 Feet
900 Feet
600 Feet
300 Feet
0 Feet
1500 Feet
1200 Feet
900 Feet
600 Feet
300 Feet
0 Feet

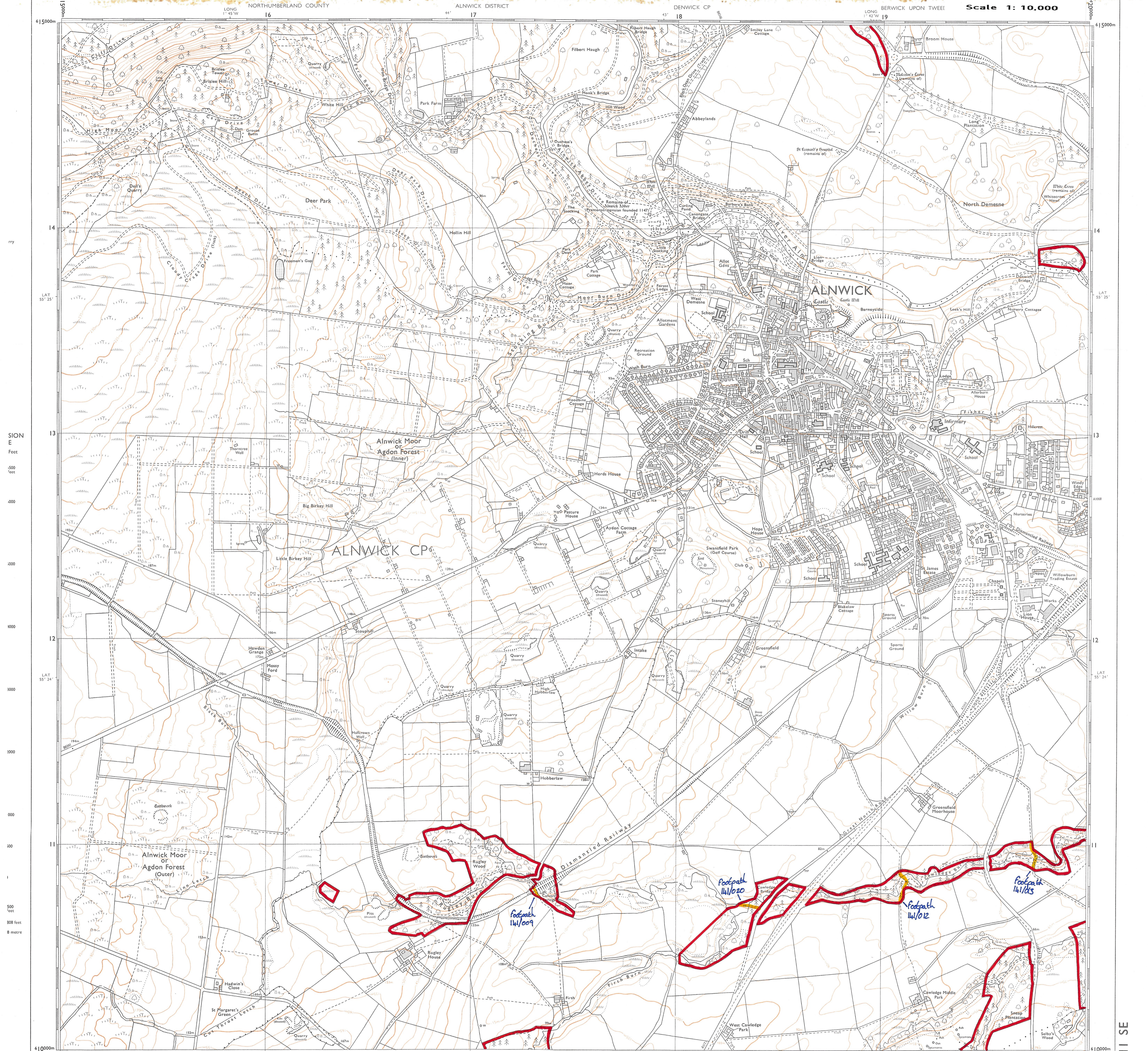
DENWICK CP
ALNWICK CP
ALNWICK CP

LONG 1° 50' W
LONG 1° 46' W

EDLINGHAM CP

615000m
614000m
613000m
612000m
611000m
610000m

LONG 1° 50' W
LONG 1° 46' W



615000m
14
13
12
11
610000m

615000m
14
13
12
11
610000m

500 feet

1000 feet

1500 feet

2000 feet

2500 feet

3000 feet

3500 feet

4000 feet

4500 feet

5000 feet

5500 feet

6000 feet

6500 feet

7000 feet

7500 feet

8000 feet

8500 feet

9000 feet

9500 feet

10000 feet

10500 feet

11000 feet

11500 feet

12000 feet

12500 feet

13000 feet

13500 feet

14000 feet

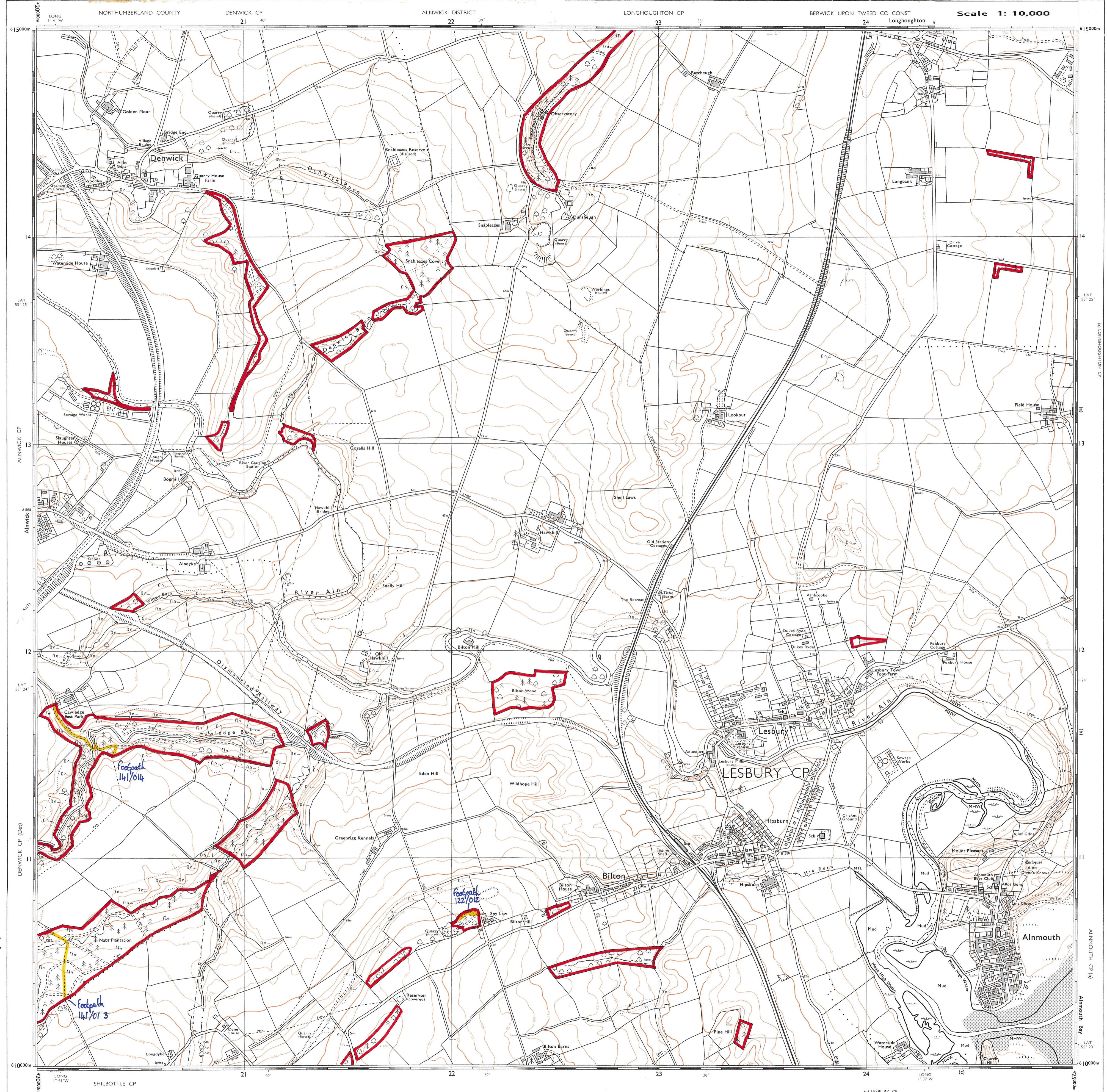
14500 feet

15000 feet

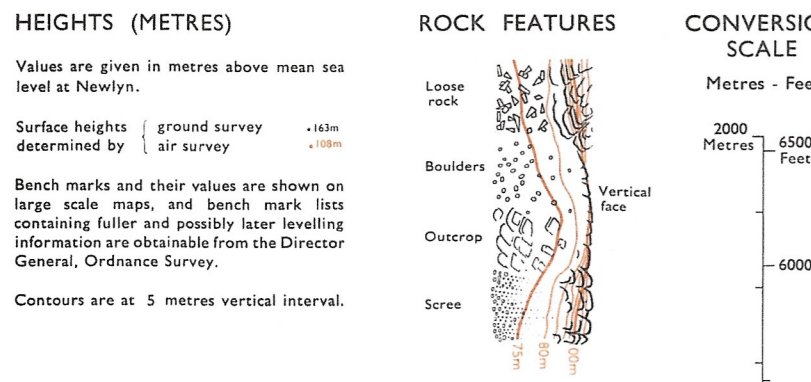
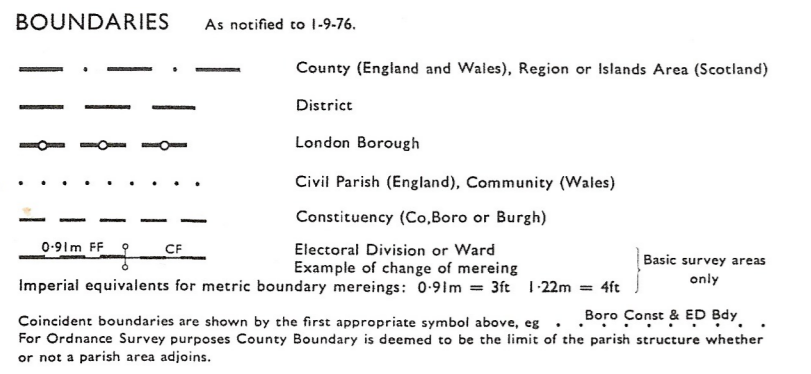
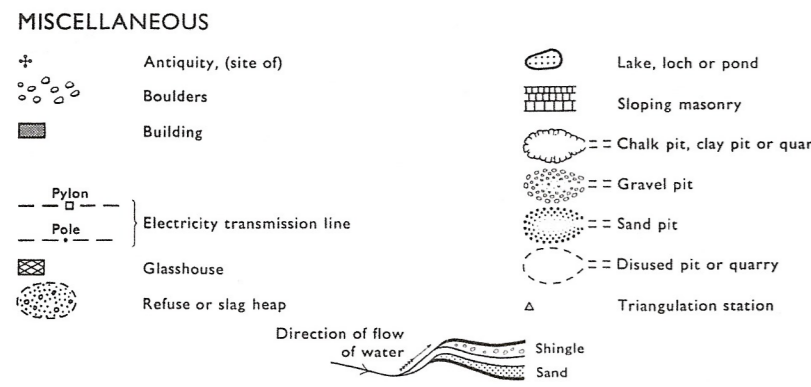
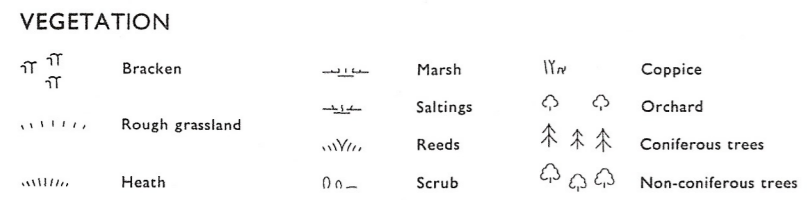
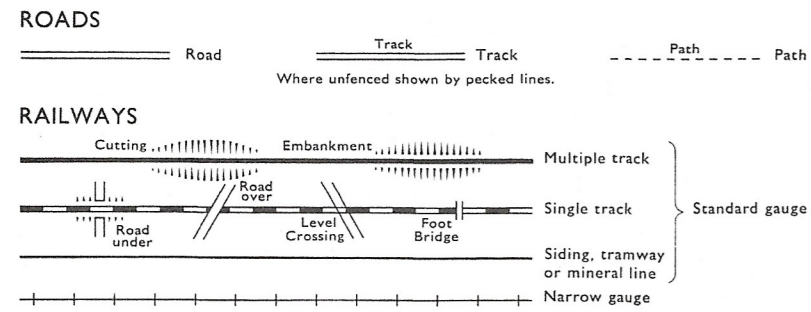
610000m

615000m

620000m



SYMBOLS



ABBREVIATIONS

BP BS	Boundary Post or Stone	Pol Sta	Police Station
Ch	Church	PO	Post Office
CH	Club House	PC	Public Convenience
FE Sta	Fire Engine Station	PH	Public House
FB	Foot Bridge	SB	Signal Box
Fn	Fountain	Spr	Spring
GP	Guide Post	TCB	Telephone Call Box
MP	Mile Post	TCP	Telephone Call Post
MS	Mile Stone	W	Well

THE NATIONAL GRID REFERENCE SYSTEM

TO GIVE A GRID REFERENCE CORRECT TO 100 METRES

EXAMPLE Seaton Barns The grid letters on this sheet are - NU

EASTING

Take west edge of kilometre square in which point lies and read the large figures printed opposite this line on north and south margins.

Estimate tenths eastwards

26

1

261

NORTHING

Take south edge of kilometre square in which point lies and read the large figures printed opposite this line on east and west margins.

Estimate tenths northwards

13

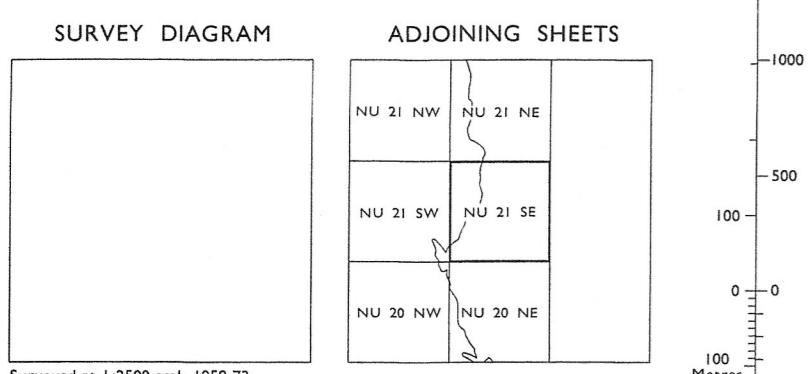
2

132

Full 100 metre reference NU 261132

The full reference, above, is unique. If grid letters are omitted, the resulting reference 261132 recurs at intervals of 100 kilometres. When the area concerned is sufficiently restricted, as will usually be the case with maps on scales of one inch to one mile and larger, the grid letters are normally omitted.

At the eastern edge of this sheet True North is 0° 23' West of Grid North and at the western edge, 0° 20' West of Grid North. Magnetic North was about 81° West of Grid North in 1976 decreasing by about 1° in four years.



Surveyed at 1:2500 scale 1959-73
 Revised for significant changes 1975.
 Contours surveyed 1972.
 Mean high water surveyed 1959-73.
 Mean low water surveyed 1963-71.

1 square centimetre on this map represents 1 hectare (2.471 acres) on the ground.

1 metre = 3.2808 feet
 1 foot = 0.3048 metre

A booklet, Place names on maps of Scotland and Wales, is published by the Ordnance Survey, and includes a glossary of the most common Gaelic, Scandinavian and Welsh elements used on Ordnance Survey maps of Scotland and Wales.

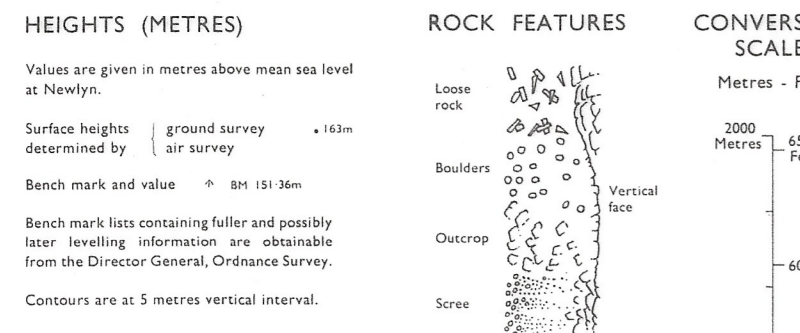
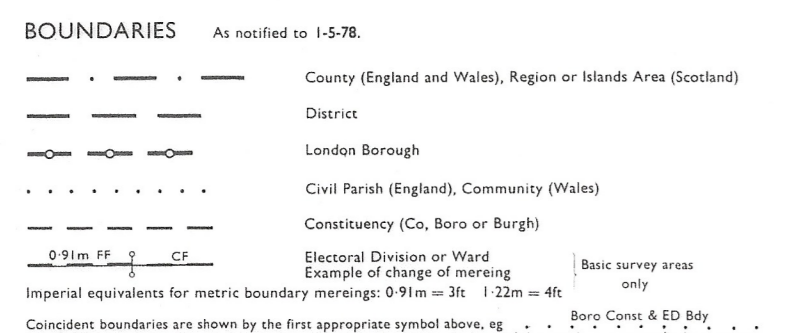
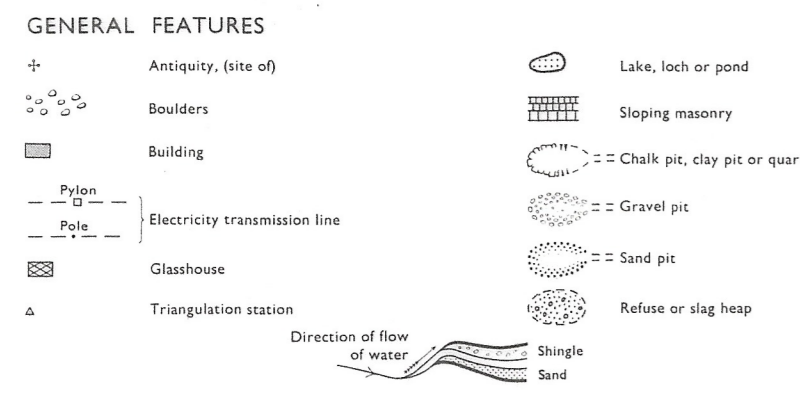
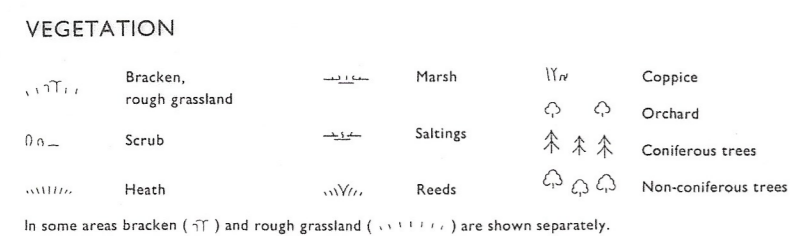
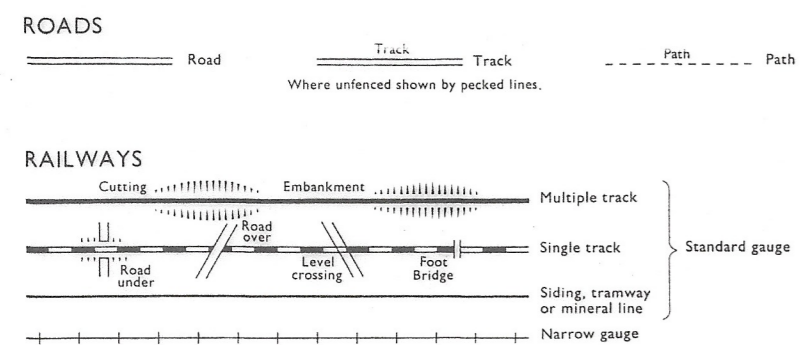
The representation on this map of a road, track or path is no evidence of the existence of a right of way.

Made and published by the Director General of the Ordnance Survey, Southampton.



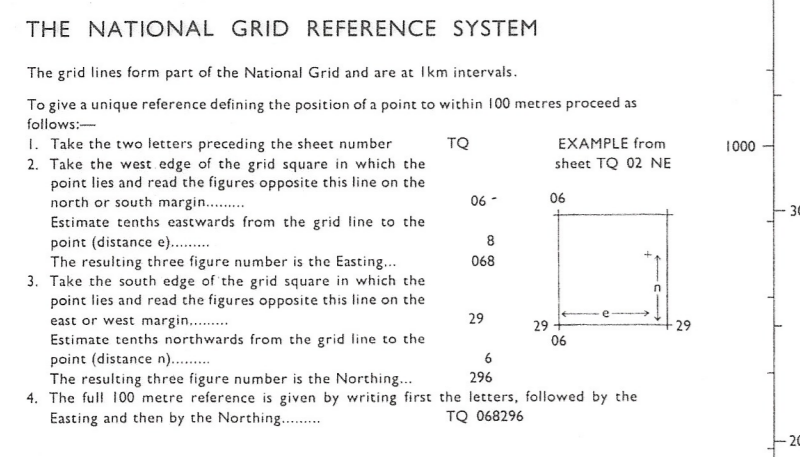
NORTH SEA

NU 21 NE

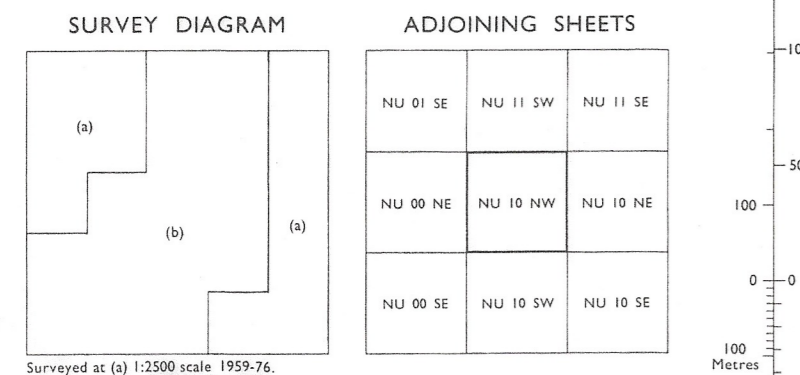


ABBREVIATIONS

BP,BS	Boundary Post or Stone	PO	Post Office
Ch	Church	PC	Public Convenience
CH	Club House	PH	Public House
F Sta	Fire Station	S	Stone
FB	Foot Bridge	Spr	Spring
Ft	Fountain	TCB	Telephone Call Box
GP	Guide Post	TCP	Telephone Call Post
MP,MS	Mail Post or Stone	TH	Town Hall
P	Pole or Post	W	Well
Pol Sta	Police Station	Y	Youth hostel



At the eastern edge of this sheet True North is 0°12' West of Grid North and at the western edge 0°08' West of Grid North. Magnetic North was about 8° West of Grid North in 1978 decreasing by about 3° in three years.



1 square centimetre on this map represents 1 hectare (2.471 acres) on the ground.

1 metre = 3.2808 feet

1 foot = 0.3048 metre

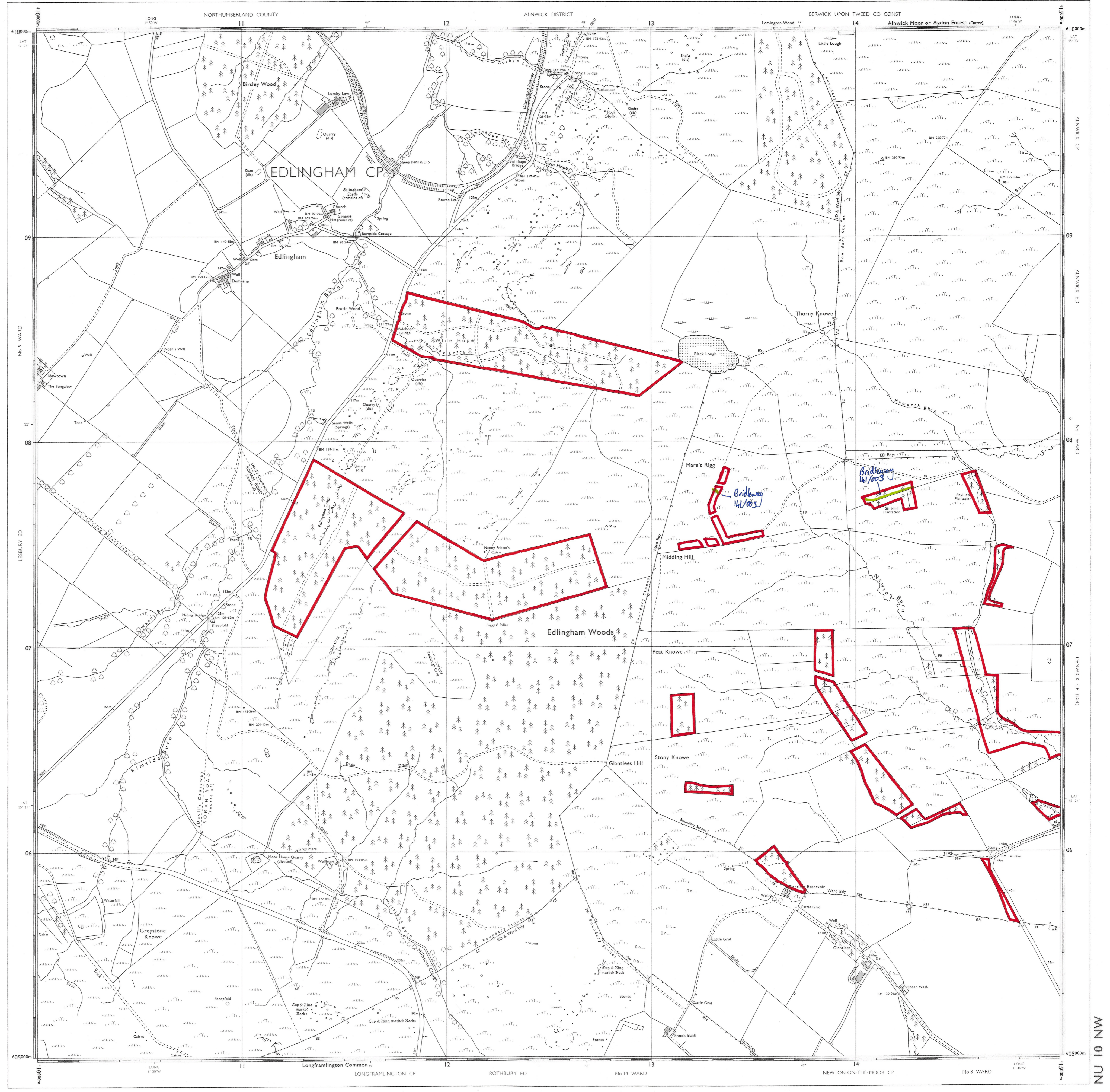
A booklet, Place names on maps of Scotland and Wales, is published by the Ordnance Survey, and includes a glossary of the most common Gaelic, Scandinavian and Welsh elements used on Ordnance Survey maps of Scotland and Wales.

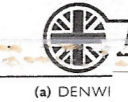
The representation on this map of a road, track or path is no evidence of the existence of a right of way.

Made and published by the Director General of the Ordnance Survey, Southampton.

© Crown copyright 1978

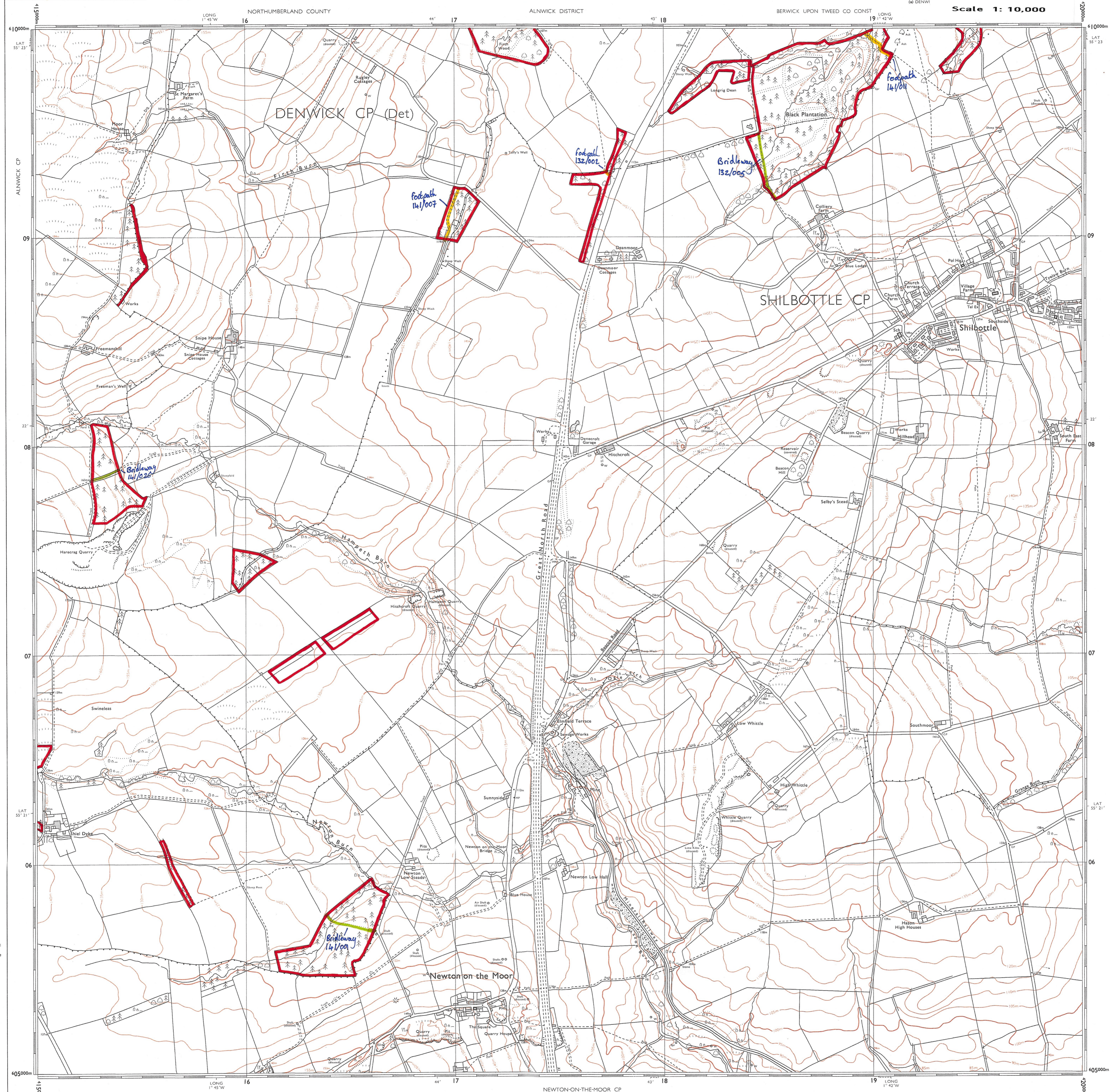
A





(a) DENWI

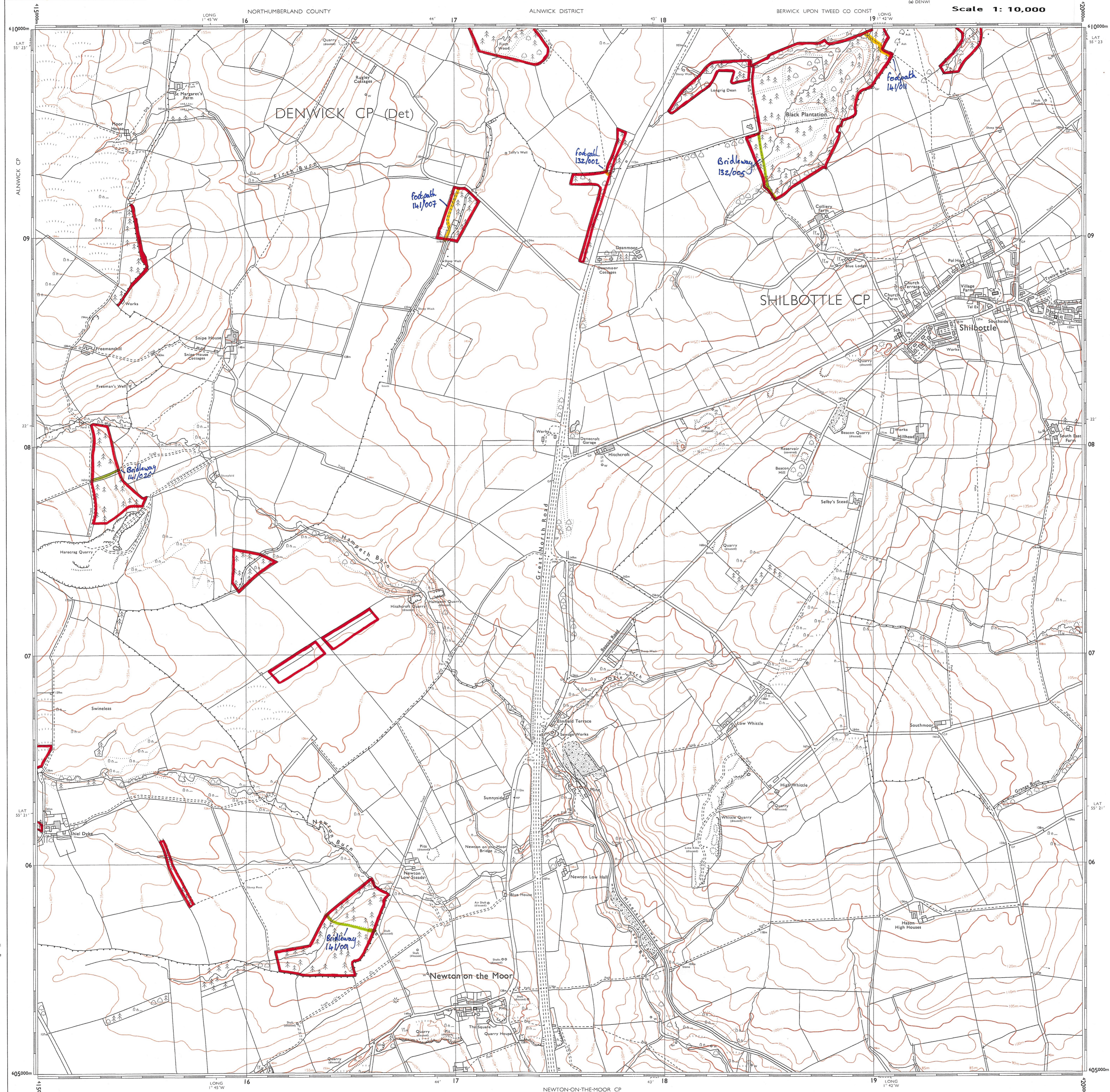
Scale 1: 10,000



DENWICK CP (Det)

SHILBOTTLE CP

Newton-on-the-Moor





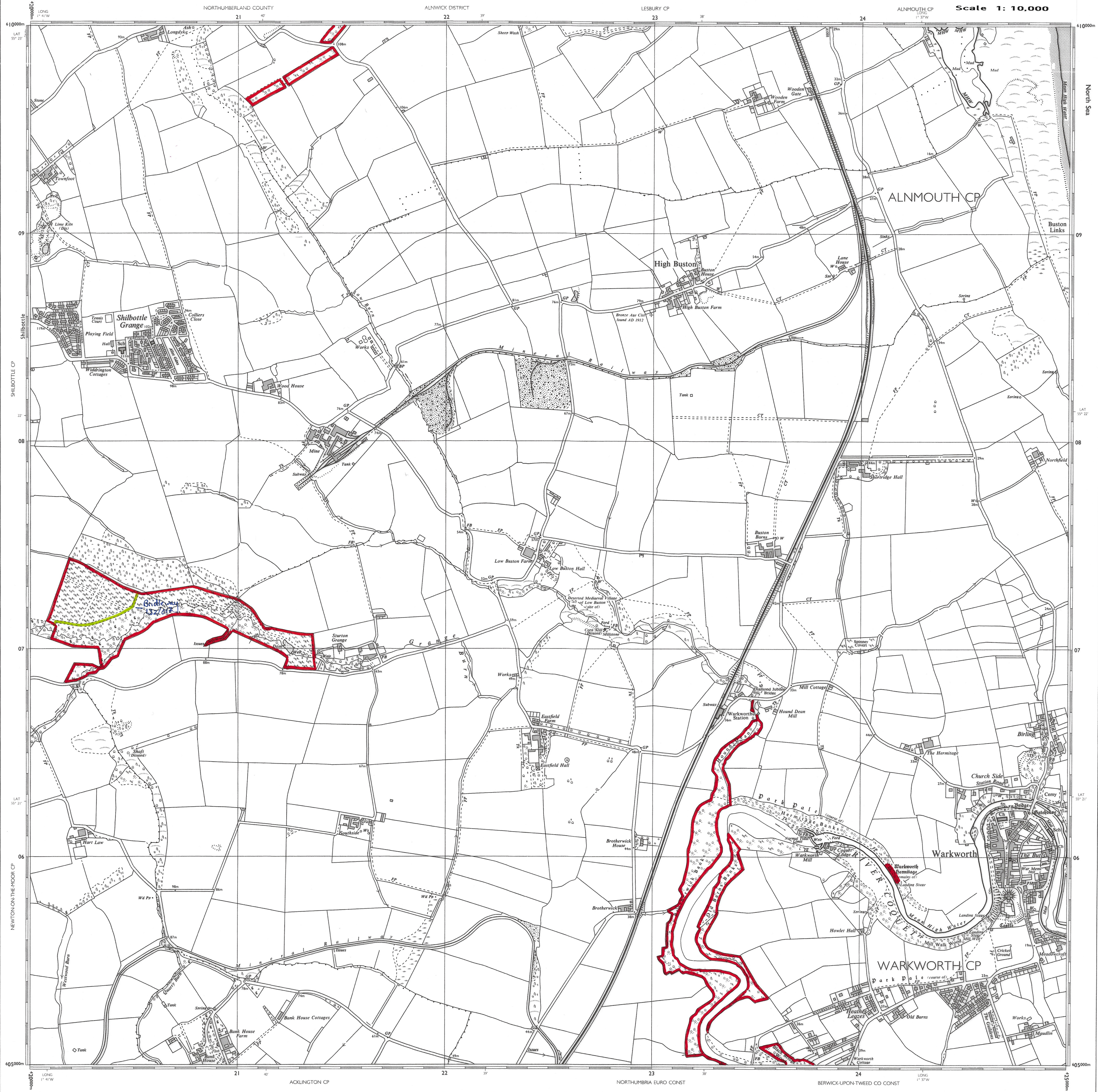
NORTHUMBERLAND COUNTY

ALNWICK DISTRICT

LESBURY CP

ALNMOUTH CP

Scale 1: 10,000



610000m
LAT 55° 23'
Shilbottle CP
NEWTON-ON-THE-MOOR CP
605000m

North Sea
LAT 55° 22'
LAT 55° 21'
LAT 55° 20'
605000m

ACKLINGTON CP

NORTHUMBRIA EURO CONST

BERWICK-UPON-TWEED CO CONST

NU 20 NW

SCALE 1:10 000

SYMBOLS

ROADS
 Road Track Track Path Path
 Where unfenced shown by pecked lines.

RAILWAYS
 Cutting, embankment, multiple track, single track, siding, tramway or mineral line, narrow gauge.

VEGETATION
 Bracken, Marsh, Coppice, Rough grassland, Saltings, Orchard, Reeds, Coniferous trees, Heath, Scrub, Non-coniferous trees.

MISCELLANEOUS
 Antiquity, Boulders, Building, Pylon, Electricity transmission line, Glasshouse, Refuse or slag heap, Lake, loch or pond, Sloping masonry, Chalk pit, clay pit or quarry, Gravel pit, Sand pit, Disused pit or quarry, Triangulation station, Direction of flow of water, Shingle, Sand.

BOUNDARIES
 As notified to I-2-77.
 County (England and Wales), Region or Islands Area (Scotland), District, London Borough, Civil Parish (England), Community (Wales), Constituency (Co, Boro or Burgh), Electoral Division or Ward, Example of change of mering, Imperial equivalents for metric boundary mergings: 0.91m = 3ft, 1.22m = 4ft.

HEIGHTS (METRES)
 Values are given in metres above mean sea level at Newlyn.
 Surface heights: ground survey, air survey.
 Bench marks and their values are shown on large scale maps, and bench mark lists containing fuller and possibly later levelling information are obtainable from the Director General, Ordnance Survey.
 Contours are at 5 metres vertical interval.

ROCK FEATURES
 Loose rock, Boulders, Outcrop, Scree.

CONVERSION SCALE
 Metres - Feet
 2000 Metres = 6500 Feet
 6000
 5000
 4000
 3000
 2000
 1500
 1000
 500
 0
 100 Metres
 500 Feet

ABBREVIATIONS

BP,BS	Boundary Post or Stone	Pol Sta	Police Station
Ch	Church	PO	Post Office
CH	Club House	PC	Public Convenience
FE Sta	Fire Engine Station	PH	Public House
FB	Foot Bridge	SB	Signal Box
Fn	Fountain	Spr	Spring
GP	Guide Post	TCB	Telephone Call Box
MP	Mail Post	TCP	Telephone Call Post
MS	Mile Stone	W	Well

THE NATIONAL GRID REFERENCE SYSTEM
 TO GIVE A GRID REFERENCE CORRECT TO 100 METRES

EXAMPLE Swarlandddan The grid letters on this sheet are NU

EASTING
 Take west edge of kilometre square in which point lies and read the large figures printed opposite this line on north and south margins. Estimate tenths eastwards.

NORTHING
 Take south edge of kilometre square in which point lies and read the large figures printed opposite this line on east and west margins. Estimate tenths northwards.

Full 100 metre reference NU 171013

The full reference, above, is unique. If grid letters are omitted, the resulting reference 171013 refers to intervals of 100 kilometres. When the area concerned is sufficiently restricted, as will usually be the case with maps on scales of one inch to one mile and larger, the grid letters are normally omitted.

At the eastern edge of this sheet True North is 0° 16' West of Grid North and at the western edge 0° 12' West of Grid North. Magnetic North was about 8° West of Grid North in 1977 decreasing by about 2" in four years.

SURVEY DIAGRAM

ADJOINING SHEETS

NU 10 NW	NU 10 NE	NU 20 NW
NU 10 SW	NU 10 SE	NU 20 SW
NZ 19 NW	NZ 19 NE	NZ 29 NW

Surveyed at 1:2500 scale 1959-73. Revised for significant changes 1975. Contours surveyed 1972.

1 square centimetre on this map represents 1 hectare (2.471 acres) on the ground.

1 metre = 3.2808 feet
 1 foot = 0.3048 metre

A booklet, *Place names on maps of Scotland and Wales*, is published by the Ordnance Survey, and includes a glossary of the most common Gaelic, Scandinavian and Welsh elements used on Ordnance Survey maps of Scotland and Wales.

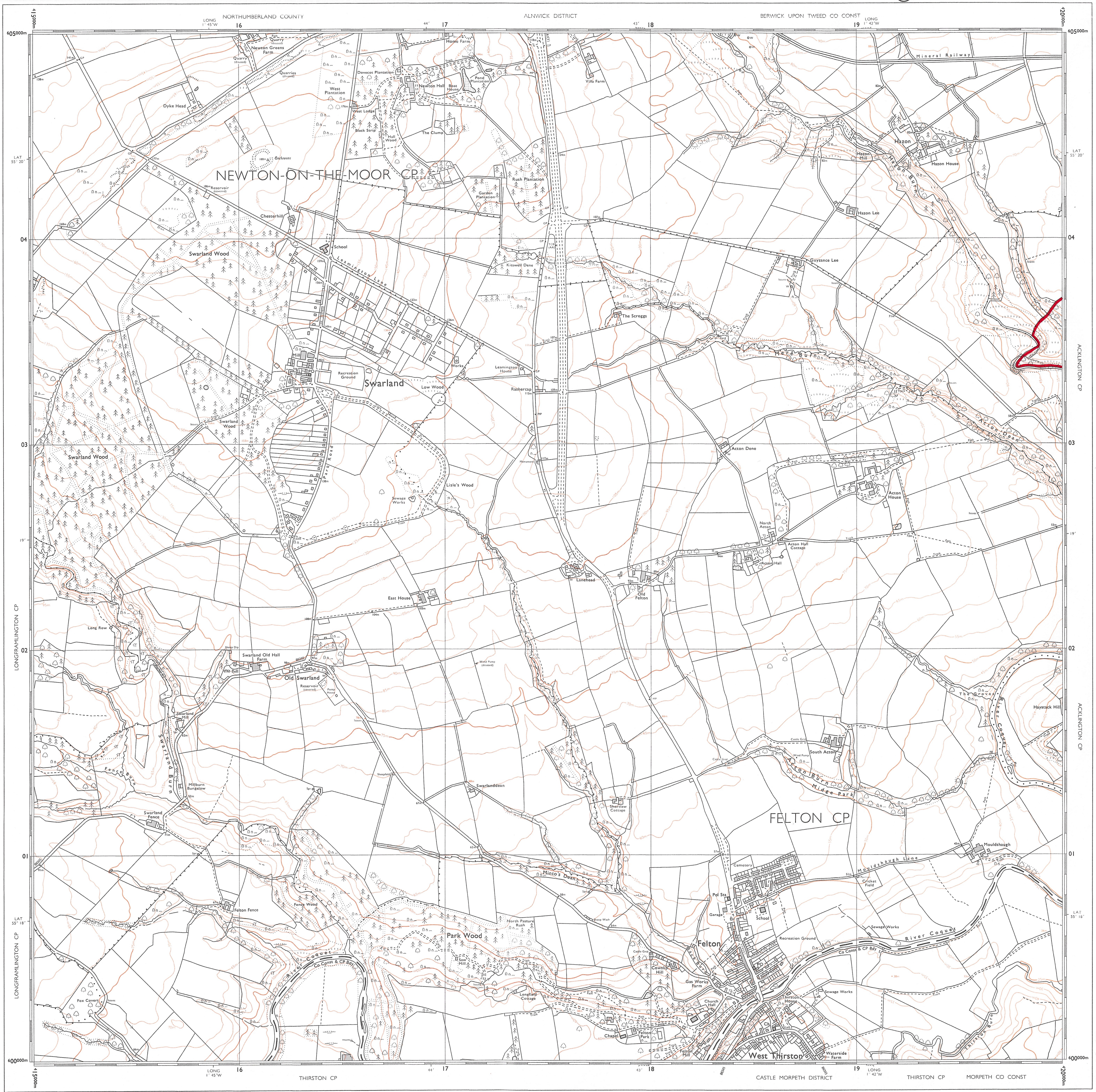
The representation on this map of a road, track or path is no evidence of the existence of a right of way.

Made and published by the Director General of the Ordnance Survey, Southampton.

© Crown copyright 1977

BOUNDARIES
 As notified to I-2-77.
 County (England and Wales), Region or Islands Area (Scotland), District, London Borough, Civil Parish (England), Community (Wales), Constituency (Co, Boro or Burgh), Electoral Division or Ward, Example of change of mering, Imperial equivalents for metric boundary mergings: 0.91m = 3ft, 1.22m = 4ft.

Concurrent boundaries are shown by the first appropriate symbol above, e.g. Boro Const & ED Bdy. For Ordnance Survey purposes County Boundary is deemed to be the limit of the parish structure whether or not a parish area exists.



SCALE 1:10 000

ROADS

==== Road --- Track - - - Path

The representation on this map of a road, track or path is no evidence of the existence of a right of way

RAILWAYS

Cutting Embankment Multiple track

----- Single track Standard gauge

----- Siding, tramway or mineral line

----- Narrow gauge

VEGETATION Limits of vegetation are defined by positioning of the symbols but may be delimited also by gates or doors

In some areas bracken (T), rough grassland (---), saltings (---) and reeds (---) are shown separately

GENERAL FEATURES

BOUNDARIES As notified to October 1990

----- County (England and Wales), Region or Islands Area (Scotland)

----- District

----- London Borough

----- Civil Parish (England), Community (Wales)

----- Constituency (County, Borough, Burgh or European Assembly)

----- Electoral Division or Ward (shown only on sheets containing areas not published at larger scales)

Example of change of merging (shown only where there is no publication at larger scales)

Imperial equivalents for metric boundary measurements: 0.91m = 3ft, 1.22m = 4ft

Coincident boundaries are shown by the first appropriate symbol above, e.g. --- for County Boundary & ED Bdy

For Ordnance Survey purposes County Boundary is deemed to be the limit of the parish structure whether or not a parish area exists

HEIGHTS (METRES)

Values are given in metres above mean sea level at Newlyn

Surface heights ground survey +13m

 Lair survey +13m

Bench mark and value BM 151-36m

Bench marks and their values are shown only where there is no publication at larger scales

Bands mark lines containing fuller and possibly later levelling information are obtainable from the Ordnance Survey

Contours are at 5 metres vertical interval

ABBREVIATIONS

BP, BS Boundary Post, Boundary Stone	PO Post Office
CH Club House	Pol Sta Police Station
F Sta Fire Station	PW Place of Worship
FB Foot Bridge	S Stone
GP Guide Post	Spr Spring
MP, MS Mile Post, Mile Stone	TCB Telephone Call Box
NTL Normal Tidal Limit	TCP Telephone Call Post
P Pier or Post	TH Town Hall
PC Public Convenience	W Well
PH Public House	Y Youth hostel

THE NATIONAL GRID REFERENCE SYSTEM

The grid lines form part of the National Grid and are at 1 km intervals

To give a unique reference defining the position of a point to within 100 metres proceed as follows:

1. Take the two letters preceding the sheet number
2. Take the west edge of the grid square in which the point lies and read the figures opposite this line on the north or south margin
3. Estimate tenths eastwards from the grid line to the point (distance n)
4. Take the south edge of the grid square in which the point lies and read the figures opposite this line on the east or west margin
5. Estimate tenths northwards from the grid line to the point (distance n)
6. The resulting three figure number is the Northing
7. The full 100 metre reference is given by writing first the letters, followed by the Easting and then by the Northing

EXAMPLE from sheet TQ 02 NE

TQ 06 06 068

29 29 29

06 06 06

29 29 29

TQ 06296

NORTH POINTS

At the eastern edge of this sheet true north is 0° 19' west of grid north and at the western edge 0° 16' west of grid north. Magnetic north is estimated at 6° west of grid north for 1992 decreasing by about 10" in three years.

SURVEY DIAGRAM

ADJOINING SHEETS

NU 19 NE	NU 20 NW	NU 20 NE
NU 19 SE	NU 20 SW	NU 20 SE
NZ 19 NE	NZ 20 NW	NZ 20 NE

1 square centimetre on this map represents 1 hectare (2.471 acres) on the ground

1 metre = 3.2808 feet

1 foot = 0.3048 metre

Compiled from larger scale surveys dated between 1888 and 1990

Contours surveyed 1972

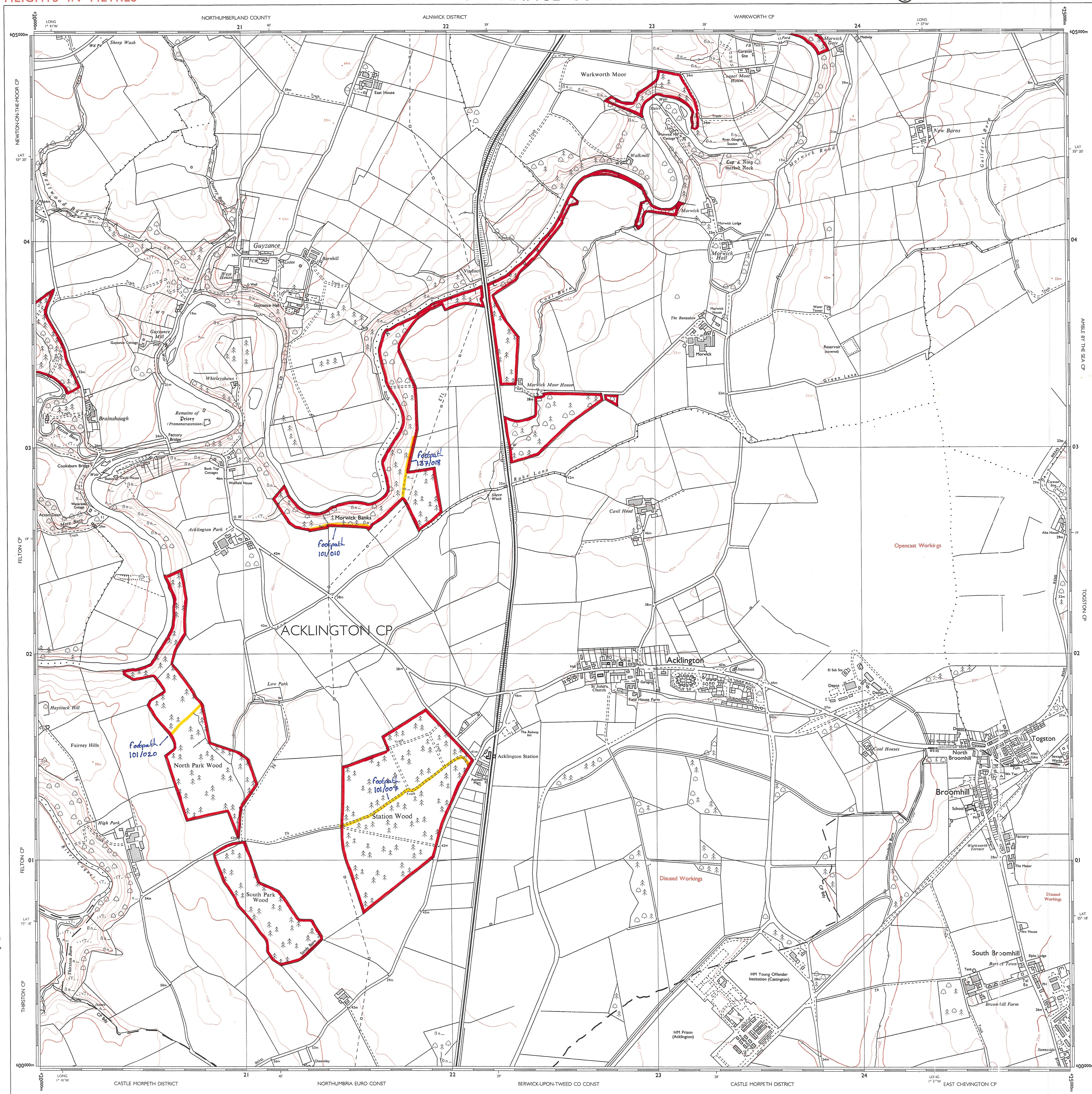
Digital data is now available from the Ordnance Survey for many maps at 1:1250, 1:2500 and 1:10 000 scales

A booklet, Place names on maps of Scotland and Wales, is published by the Ordnance Survey and includes a glossary of the most common Gaelic, Scandinavian and Welsh elements used on Ordnance Survey maps of Scotland and Wales

Made and published by the Ordnance Survey, Southampton

© Crown copyright 1991

Reproduction in whole or in part by any means is prohibited without the prior permission of the Ordnance Survey

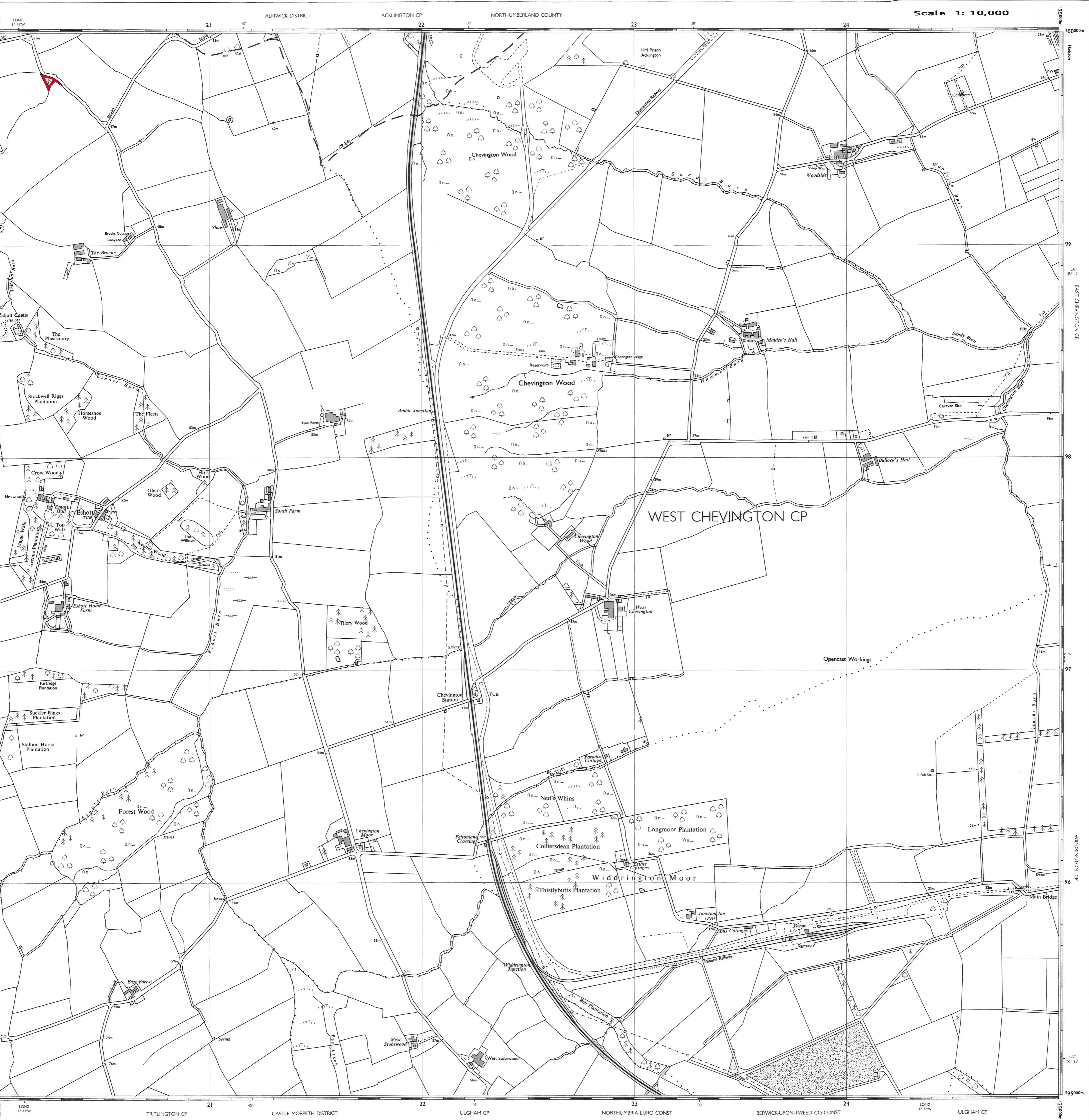
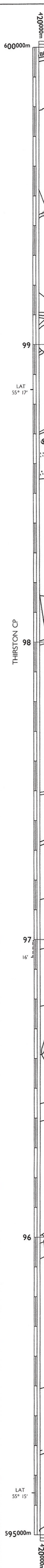
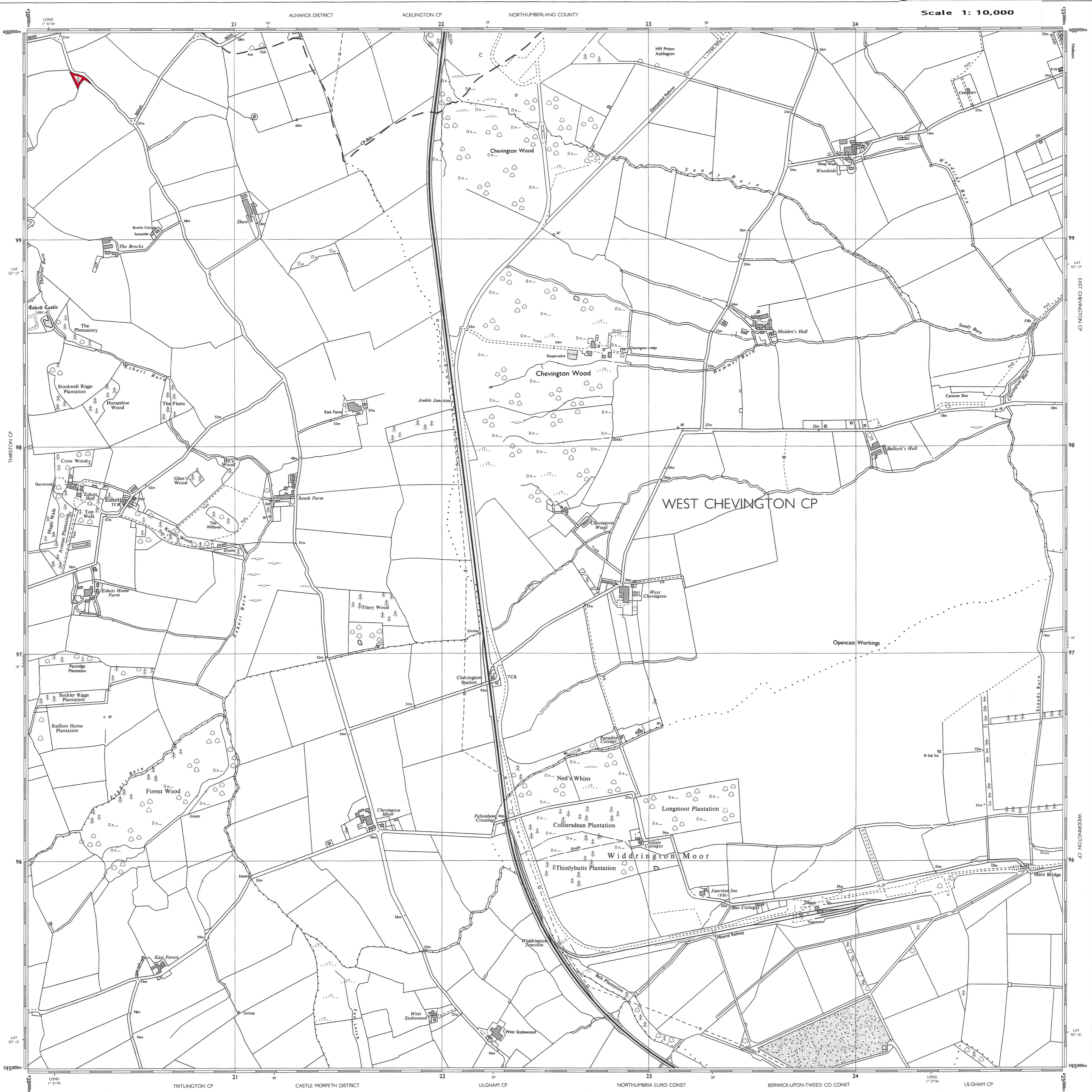


ORDNANCE SURVEY



SHEET NZ 29 NW

Scale 1: 10,000



Vertical labels on the right edge: EAST CHEVINGTON CP, WIDDINGTON CP, LAT 55° 17', LAT 55° 15', 425000m, 595000m

WN 62 ZN