



BERWICK-UPON-TWEED DISTRICT

Doddington Moor

Horton Moor

West Horton

Pond Plantation

NU 03 SW



**ROADS**

Track    Track    Path    Path

The representation on this map of a road, track or path is no evidence of the existence of a right of way

**RAILWAYS**

Cutting    Embankment    Multiple track    Standard gauge

Single track    Siding, tramway or mineral line    Narrow gauge

**VEGETATION**

Limits of vegetation are defined by positioning of the symbols but may be delineated also by pecks or dots

Bracken    Marsh    Coppice

Rough grassland    Orchard

Scrub    Saltings    Coniferous trees

Heath    Reeds    Non-coniferous trees

**GENERAL FEATURES**

Antiquity (site of)    Chalk pit, clay pit or quarry

Boulders (isolated or coastal)    Gravel pit

Building: important building    Sand pit

Glasshouse    Refuse or slag heap

Electricity transmission line    Sand

Triangulation station    Shingle

Direction of flow of water    Sloping masonry

Lake, loch or pond

**BOUNDARIES** As notified to April 1987

County (England and Wales), Region or Islands Area (Scotland)

District

London Borough

Civil Parish (England), Community (Wales)

(Constituency (Country, Borough, Burgh or European Assembly)

Electoral Division or Ward (shown only on sheets containing areas not published at larger scales)

Example of change of mering (shown only where there is no publication at larger scales)

Imperial equivalents for metric boundary markings: 0.91m = 3ft, 1.22m = 4ft

Concurrent boundaries are shown by the first appropriate symbol above, eg.    Surp Contz & ED Mtg

For Ordnance Survey purposes County Boundary is deemed to be the limit of the parish structure whether or not a parish area adjoins

**HEIGHTS (METRES)**

Values are given in metres above mean sea level at Newlyn

Surface heights (ground survey)    +15m

determined by (air survey)    +10m

Bench mark and value    BM 151.36m

Bench marks and their values are shown only where there is no publication at larger scales

Bench mark lists containing fuller and possibly later levelling information are obtainable from the Ordnance Survey

Contours are at 5 metres vertical interval

**ROCK FEATURES**

Loose rock    Vertical face

Boulders    Outcrop

Scree

**CONVERSION SCALE**

Metres - Feet

2000 Metres    6500 Feet

6000    19685

4000    13120

1500    4920

1000    3280

500    1640

0    0

100 Metres    328 Feet

500    1640

1000    3280

1500    4920

2000    6560

2500    8200

3000    9840

3500    11480

4000    13120

4500    14760

5000    16400

5500    18040

6000    19680

6500    21320

7000    22960

7500    24600

8000    26240

8500    27880

9000    29520

9500    31160

10000    32800

**ABBREVIATIONS**

BP, BS    Boundary Post, Boundary Stone

Ch    Church

CH    Club House

F Sta    Fire Station

FB    Foot Bridge

GP    Guide Post

MP, MS    Mile Post, Mile Stone

N TL    Normal Tidal Limit

P    Pole or Post

Pol Sta    Police Station

PO    Post Office

PC    Public Convenience

PH    Public House

S    Stone

Sp    Spring

TCB    Telephone Call Box

TCP    Telephone Call Post

TH    Town Hall

W    Well

Y    Youth hostel

**THE NATIONAL GRID REFERENCE SYSTEM**

The grid lines form part of the National Grid and are at 1 km intervals

To give a unique reference defining the position of a point to within 100 metres proceed as follows:

1. Take the two letters preceding the sheet number
2. Take the west edge of the grid square in which the point lies and read the figures opposite this line on the north or south margin
3. Take the south edge of the grid square in which the point lies and read the figures opposite this line on the east or west margin
4. The full 100 metre reference is given by writing first the letters, followed by the Easting and then by the Northing

EXAMPLE from sheet TQ 02 NE

TQ    EXAMPLE from sheet TQ 02 NE

06    8

068

29    29

6    06

296

TQ 068296

**NORTH POINTS**

At the bottom edge of this sheet true north is 0° 20' west of grid north and at the western edge 0° 04' west of grid north. Magnetic north is estimated at 61° west of grid north for 1988 decreasing by about 1" in three years

**SURVEY DIAGRAM**

ADJOINING SHEETS

NU 03 NW	NU 03 NE	NU 13 NW
NU 03 SW	NU 03 SE	NU 13 SW
NU 02 NW	NU 02 NE	NU 12 NW

Surveyed at 1:2500 scale 1965-66  
 Revised for significant changes 1968  
 Contours surveyed 1975

1 square centimetre on this map represents 1 hectare (2.471 acres) on the ground

1 metre = 3.2808 feet

1 foot = 0.3048 metre

Digital data is now available from the Ordnance Survey for many maps at 1:1250, 1:2500 and 1:10 000 scales

A booklet, *Place names on maps of Scotland and Wales*, is published by the Ordnance Survey and includes a glossary of the most common Gaelic, Scandinavian and Welsh elements used on Ordnance Survey maps of Scotland and Wales

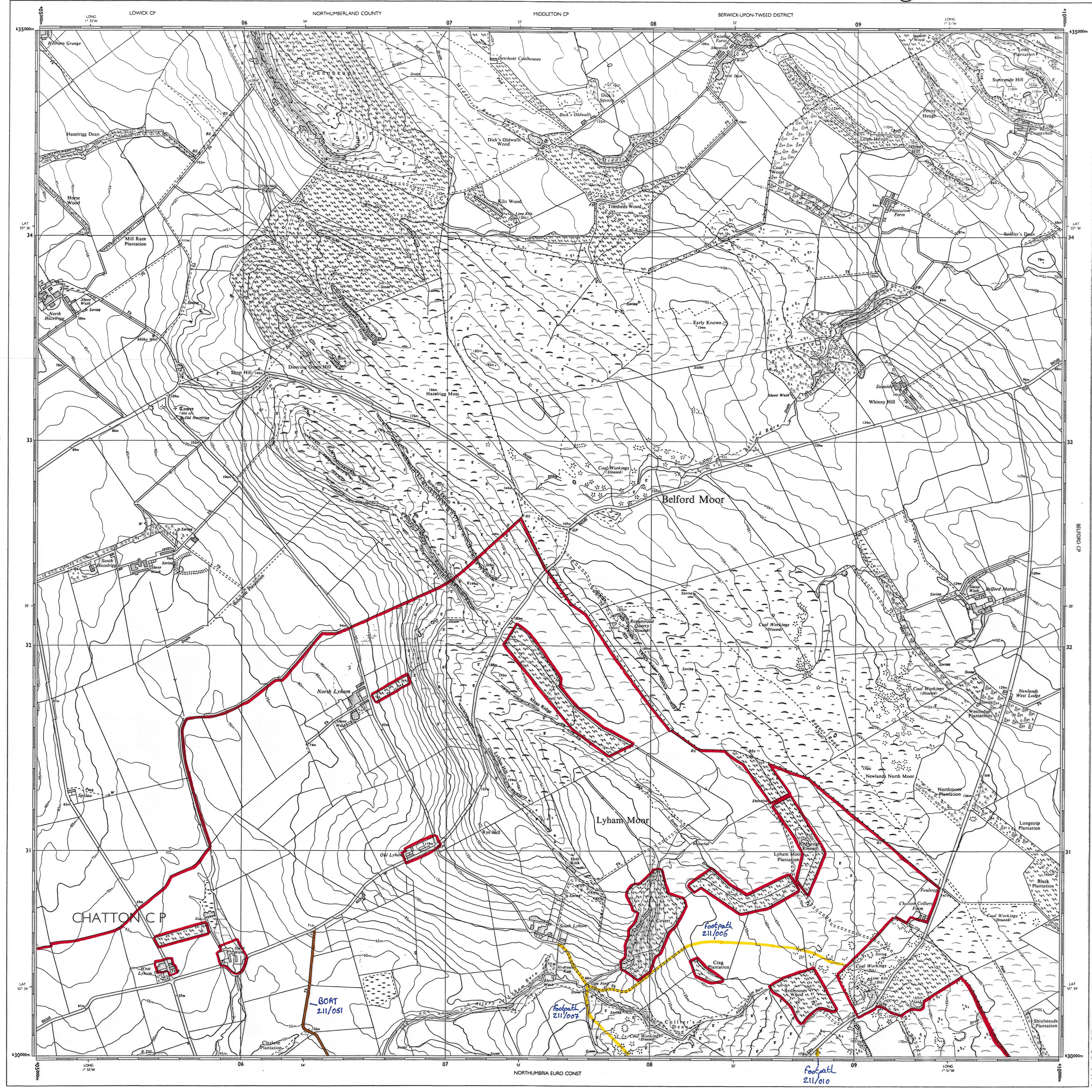
Made and published by the Ordnance Survey, Southampton

Converted to 1:10 000 scale by enlargement from 1:10 560 scale with the addition of metric contours

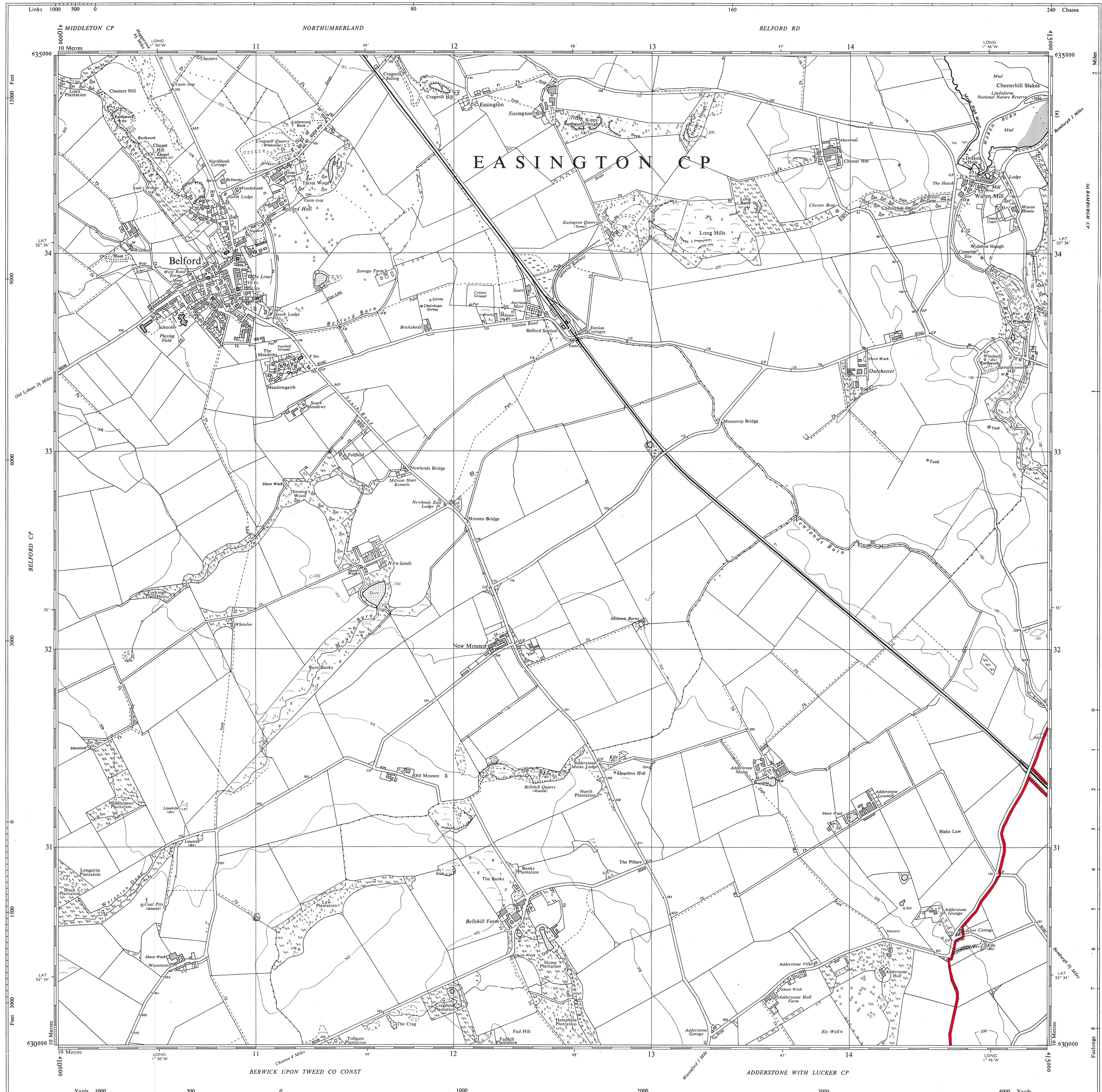
© Crown copyright 1987

Reproduction in whole or in part by any means is prohibited without the prior permission of the Ordnance Survey

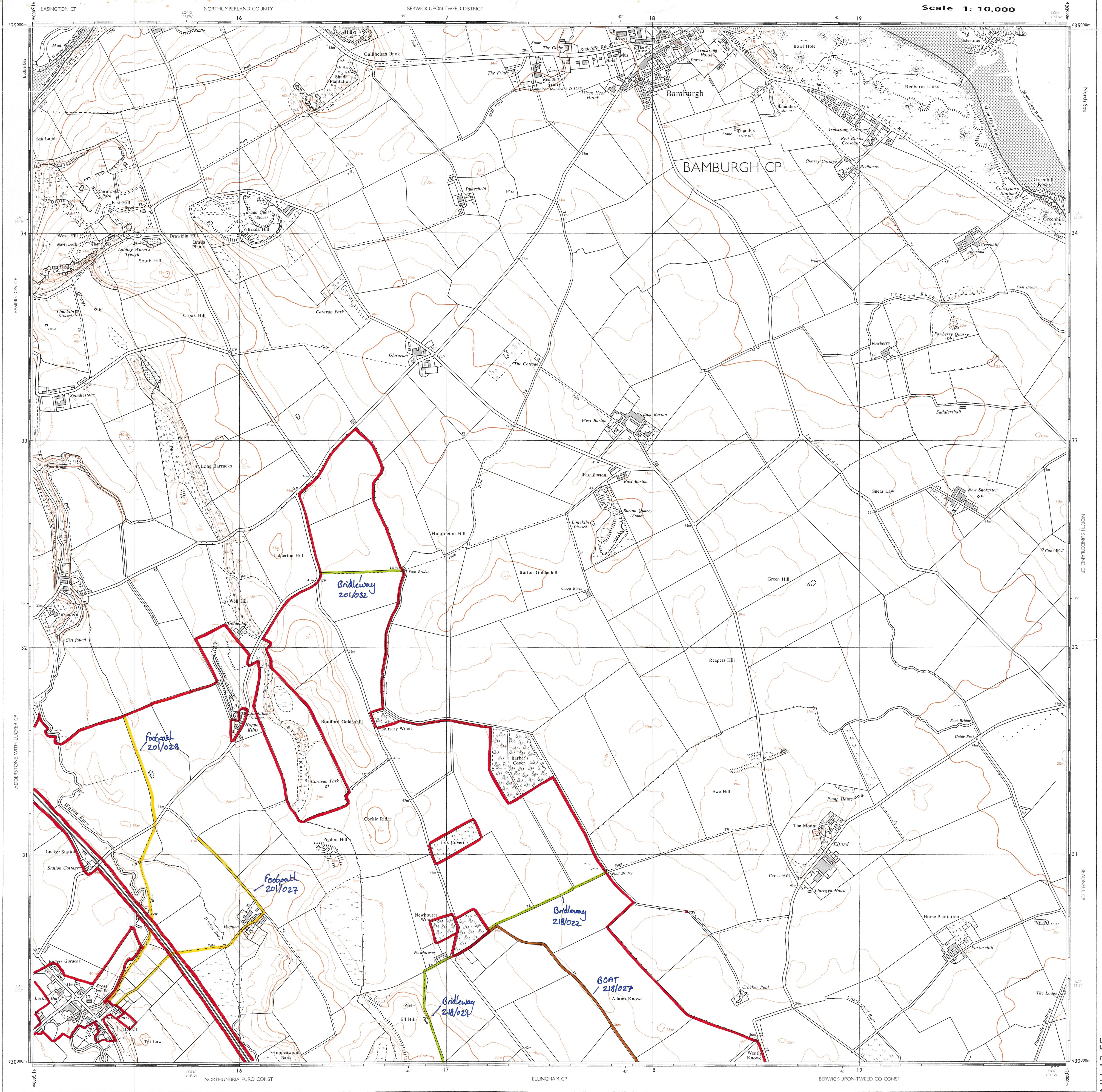
A











635000m  
634000m  
633000m  
632000m  
631000m  
630000m  
629000m  
628000m  
627000m  
626000m  
625000m  
624000m  
623000m  
622000m  
621000m  
620000m  
619000m  
618000m  
617000m  
616000m  
615000m  
614000m  
613000m  
612000m  
611000m  
610000m  
609000m  
608000m  
607000m  
606000m  
605000m  
604000m  
603000m  
602000m  
601000m  
600000m

635000m  
634000m  
633000m  
632000m  
631000m  
630000m  
629000m  
628000m  
627000m  
626000m  
625000m  
624000m  
623000m  
622000m  
621000m  
620000m  
619000m  
618000m  
617000m  
616000m  
615000m  
614000m  
613000m  
612000m  
611000m  
610000m  
609000m  
608000m  
607000m  
606000m  
605000m  
604000m  
603000m  
602000m  
601000m  
600000m





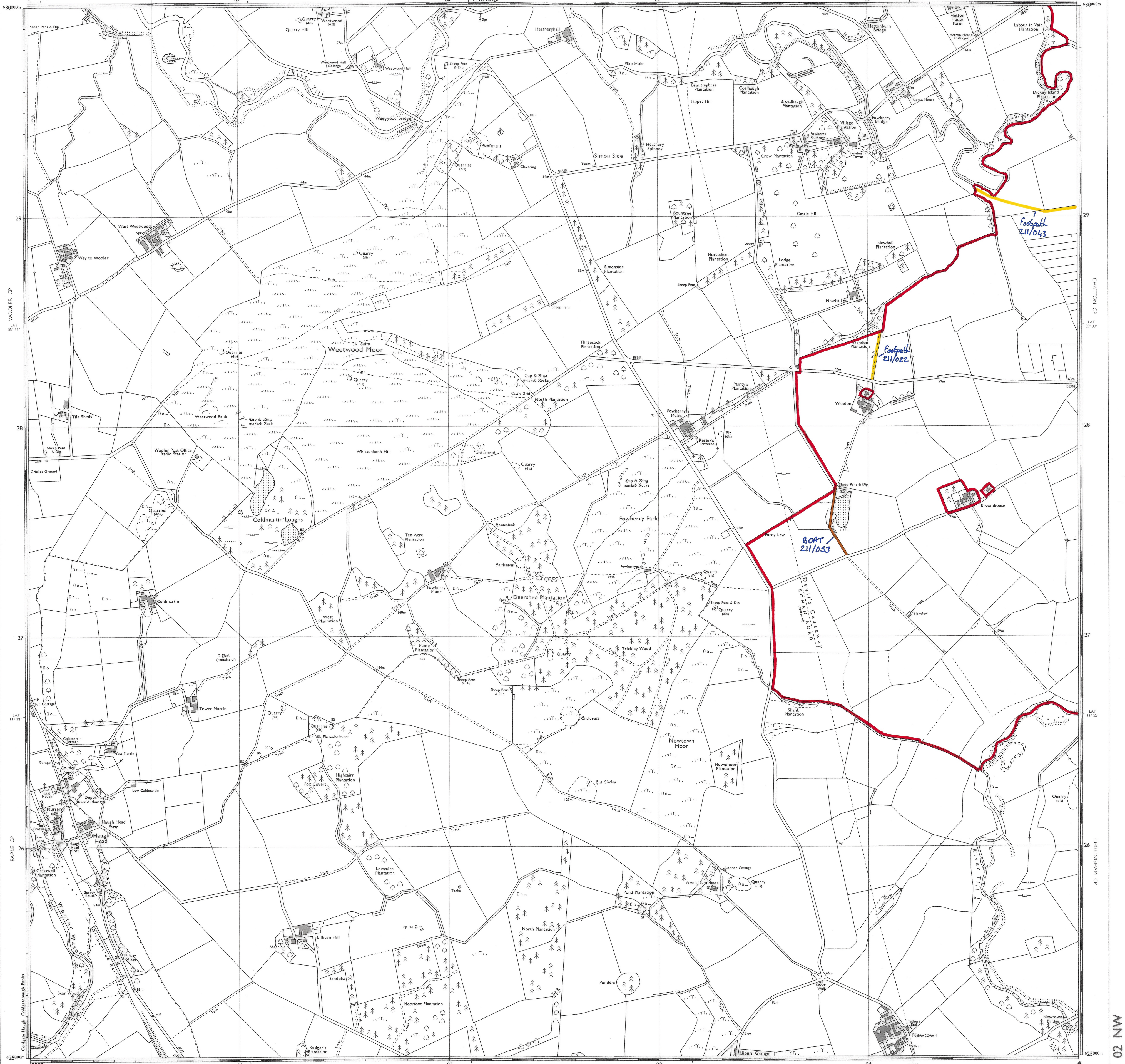
NORTHUMBERLAND COUNTY

BERWICK-UPON-TWEED DISTRICT

NORTHUMBRIA EURO CONST

BERWICK UPON TWEED CO CONST

Scale 1: 10,000



WOOLER CP  
EARLE CP  
LILBURN CP

CHATTON CP  
CHILLINGHAM CP

NU 02 NW







SYMBOLS

**ROADS**

— Road — Track — Path — Path

Where unfenced shown by pecked lines.

**RAILWAYS**

Cutting, Embankment, Multiple track, Single track, Standard gauge, Siding, tramway or mineral line, Narrow gauge

**VEGETATION**

Bracken, Marsh, Coppice, Rough grassland, Saltings, Orchard, Reeds, Coniferous trees, Heath, Scrub, Non-coniferous trees

**MISCELLANEOUS**

Antiquity (site of), Buildings, Building, Lake, loch or pond, Sloping masonry, Chalk pit, clay pit or quarry, Gravel pit, Sand pit, Disused pit or quarry, Triangulation station, Electricity transmission line, Glasshouse, Refuse or slag heap, Direction of flow of water, Shingle, Sand

**BOUNDARIES**

As notified to 1-1-78.

County (England and Wales), Region or Islands Area (Scotland), District, London Borough, Civil Parish (England), Community (Wales), Constituency (Co, Boro or Burgh), Electoral Division or Ward, Example of change of merging, Imperial equivalents for metric boundary measurements: 0.91m = 3ft, 1.22m = 4ft

Coincidence boundaries are shown by the first appropriate symbol above, eg. — Boro Const & ED Bd, — For Ordnance Survey purposes County Boundary is deemed to be the limit of the parish structure whether or not a parish area adjoins.

**HEIGHTS (METRES)**

Values are given in metres above mean sea level at Newlyn.

Surface heights | ground survey, 1:10m, determined by | air survey, 1:250m

Bench mark and value | BM 131 356

Bench mark lists containing fuller and possibly laser levelling information are obtainable from the Director General, Ordnance Survey.

Contours are at 5 metres vertical interval.

**ROCK FEATURES**

Loose rock, Boulders, Outcrop, Serec

**CONVERSION SCALE**

Metres - Feet

2000 Metres = 6560 Feet

1000 Metres = 3280 Feet

500 Metres = 1640 Feet

100 Metres = 328 Feet

50 Metres = 164 Feet

1 Metre = 3.2808 Feet

1 Foot = 0.3048 Metre

**ABBREVIATIONS**

BP, BS	Boundary Post or Stone	PO	Police Station
CH	Church	PC	Post Office
CH	Club House	PC	Public Convenience
FE Sta	Fire Engine Station	PH	Public House
FB	Fox Bridge	SB	Signal Box
F	Fountain	Spr	Spring
GN	Guide Post	TCB	Telephone Call Box
MP	Mile Post	TCP	Telephone Call Post
MS	Mile Stone	W	Well
		Pol Sta	Police Station
		Post Office	Post Office
		Public Convenience	Public Convenience
		Public House	Public House
		Signal Box	Signal Box
		Spring	Spring
		Telephone Call Box	Telephone Call Box
		Telephone Call Post	Telephone Call Post
		Well	Well

**THE NATIONAL GRID REFERENCE SYSTEM**

TO GIVE A GRID REFERENCE CORRECT TO 100 METRES

**EXAMPLE** Commonflat

The grid letters on this sheet are NU

**EASTING**

Take west edge of kilometre square in which point lies and read the large figures printed opposite this line on north and south margins.

Estimate cenths eastwards

14 0/140

**NORTHING**

Take south edge of kilometre square in which point lies and read the large figures printed opposite this line on east and west margins.

Estimate cenths northwards

25 0/250

Full 100 metre reference NU 140259

The full reference, above, is unique. If grid letters are omitted, the resulting reference 140259 recurs at intervals of 100 kilometres. When the area concerned is sufficiently restricted, as will usually be the case with maps on scales of one inch to one mile and larger, the grid letters are normally omitted.

At the eastern edge of this sheet True North is 0° 12' West of Grid North and at the western edge 0° 08' West of Grid North. Magnetic North was about 8° West of Grid North in 1978 decreasing by about 1" in three years.

**SURVEY DIAGRAM**

**ADJOINING SHEETS**

NU 03 SE	NU 13 SW	NU 13 SE
NU 02 NE	NU 12 NW	NU 12 NE
NU 01 SE	NU 11 SW	NU 11 SE

Surveyed at 1:2500 scale 1973-74.  
 † Not published at 1:2500 scale.  
 Revised for significant changes 1976.  
 Contours surveyed 1973.

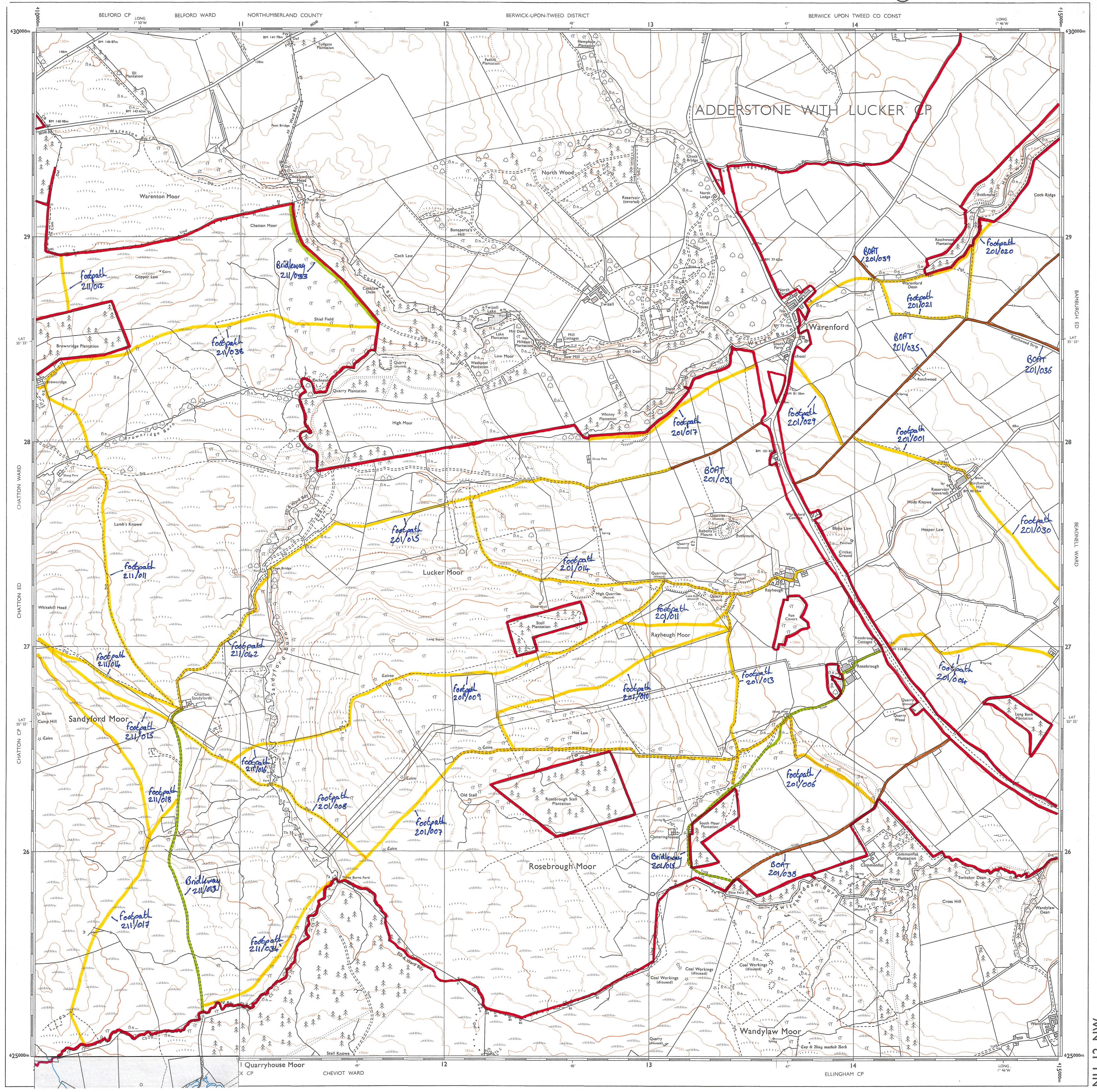
1 square centimetre on this map represents 1 hectare (2.471 acres) on the ground.

1 metre = 3.2808 feet  
 1 foot = 0.3048 metre

A booklet, Place names on maps of Scotland and Wales, is published by the Ordnance Survey, and includes a glossary of the most common Gaelic, Scandinavian and Welsh elements used on Ordnance Survey maps of Scotland and Wales.

The representation on this map of a road, track or path is no evidence of the existence of a right of way.

Made and published by the Director General of the Ordnance Survey, Southampton.





SYMBOLS

**ROADS**

Track ——— Track ——— Path - - - - Path - - - -

Where unfenced shown by pecked lines.

**RAILWAYS**

Cutting, embankment, multiple track, single track, siding, tramway or mineral line, narrow gauge.

**VEGETATION**

Bracken, Marsh, Coppice, Rough grassland, Saltings, Orchard, Heath, Reeds, Coniferous trees, Scrub, Non-coniferous trees.

**MISCELLANEOUS**

Antiquity, site of, Boulders, Building, Electricity transmission line, Glasshouse, Refuse or slag heap, Lake, loch or pond, Sloping masonry, Chalk pit, clay pit or quarry, Gravel pit, Sand pit, Disused pit or quarry, Triangulation station, Direction of flow of water, Shingle, Sand.

**BOUNDARIES**

County (England and Wales), Region or Islands Area (Scotland), District, London Borough, Civil Parish (England), Community (Wales), Constituency (Co, Boro or Burgh), Electoral Division or Ward, Example of change of merging, Imperial equivalents for metric boundary markings, Basic survey areas only.

**HEIGHTS (METRES)**

Values are given in metres above mean sea level at Newlyn.

Surface heights | ground survey, air survey.

Bench marks and their values are shown on large scale maps, and bench mark lists containing fuller and possibly later levelling information are obtainable from the Director General, Ordnance Survey.

Contours are at 5 metres vertical interval.

**ROCK FEATURES**

Loose rock, Boulders, Outcrop, Scree.

**CONVERSION SCALE**

Metres - Feet

2000 Metres = 6500 Feet

4000 Metres = 13000 Feet

6000 Metres = 19500 Feet

**ABBREVIATIONS**

BP, BS, Ch, CH, FE Sta, FB, Fn, GP, HP, MS, Pol Sta, PO, PC, PH, SB, Spr, TCB, TCP, W, Boundary Post or Stone, Church, Club House, Fire Engine Station, Foot Bridge, Fountain, Guide Post, Mile Post, Mile Stone, Police Station, Post Office, Public Convenience, Public House, Signal Box, Spring, Telephone Call Box, Telephone Call Post, Well.

**THE NATIONAL GRID REFERENCE SYSTEM**

TO GIVE A GRID REFERENCE CORRECT TO 100 METRES

EXAMPLE South Broomford The grid letters on this sheet are NU

EASTING Take west edge of kilometre square in which point lies and read the large figures printed opposite this line on north and south margins. Estimate tenths eastwards.

NORTHING Take south edge of kilometre square in which point lies and read the large figures printed opposite this line on east and west margins. Estimate tenths northwards.

Full 100 metre reference NU 192252

The full reference, above, is unique. If grid letters are omitted, the resulting reference 192252 recurs at intervals of 100 kilometres. When the area concerned is sufficiently restricted, as will usually be the case with maps on scales of one inch to one mile and larger, the grid letters are normally omitted.

At the eastern edge of this sheet True North is 0° 16' West of Grid North and at the western edge 0° 12' West of Grid North. Magnetic North was about 8° West of Grid North in 1977 decreasing by about 2" in four years.

**SURVEY DIAGRAM**

**ADJOINING SHEETS**

NU 13 SW, NU 13 SE, NU 23 SW, NU 12 NW, NU 12 NE, NU 22 NW, NU 12 SW, NU 12 SE, NU 22 SW

Surveyed at 1:2500 scale 1973-74. Revised for significant changes 1976. Contours surveyed 1972.

1 square centimetre on this map represents 1 hectare (2.47) acres on the ground.

1 metre = 3.2808 feet  
1 foot = 0.3048 metre

A booklet, Place names on maps of Scotland and Wales, is published by the Ordnance Survey, and includes a glossary of the most common Gaelic, Scandinavian and Welsh elements used on Ordnance Survey maps of Scotland and Wales.

The representation on this map of a road, track or path is no evidence of the existence of a right of way.

Made and published by the Director General of the Ordnance Survey, Southampton.

© Crown copyright 1977

