

# Northumberland Domestic Violence and Abuse and Sexual Violence Strategy 2018-2021



Working together for a safer county  
**SAFER** NORTHUMBERLAND



## Contents

Northumberland Domestic Violence and Abuse and Sexual Violence Business Group.....	3
Vision .....	4
Appendix 1 .....	5
Northumberland DVA and SV Business Coordination Group.....	5
Domestic Abuse and Sexual Violence Needs Assessment 2017-18.....	5
Appendix 2 .....	21
UK Legislation.....	21

## **Northumberland Domestic Violence and Abuse and Sexual Violence Business Group**

Northumberland's Community Safety Partnership, Children's Safeguarding Board and Adult Safeguarding Board continue to recognise domestic violence and abuse and sexual violence as key priorities. The Domestic Violence and Abuse (DVA) and Sexual Violence (SV) multi-agency business group is tasked by the three boards to drive the agenda forward.

The Northumberland Domestic Violence and Abuse and Sexual Violence business group exists to coordinate strategy and maximise resources to afford protection, provision and prevention for those who have or are experiencing or at risk of, domestic abuse and sexual violence in Northumberland.

### **Business Group Members:**

- Children's Social Care, Northumberland County Council
- Adult Social Care, Northumberland County Council
- Housing, Northumberland County Council
- Safer Northumberland, Northumberland County Council
- Education, Northumberland County Council
- Northumberland Clinical Commissioning Group
- Northumbria Police
- Northumbria Healthcare Foundation Trust
- Northumbria Community Rehabilitation Company
- Crown Prosecution Service (CPS)
- Northumberland Tyne and Wear NHS Foundation Trust (NTW)
- Northumberland Fire and Rescue
- Domestic Abuse Support Service Northumberland (DASSN), Places for People Living+
- Northumberland Domestic Abuse Service (NDAS)
- Cygnus Support
- Grace, Rape Crisis Tyneside and Northumberland
- Barnardo's
- Changing Lives

The group has agreed terms of reference, meeting quarterly to develop and review an action plan that is informed by a needs assessment that will be refreshed annually (Appendix 1).

To request a copy of the current business group action plan please contact the DA and SV Coordinator, Lesley Pyle: [lesley.pyle@northumberland.gov.uk](mailto:lesley.pyle@northumberland.gov.uk).

## **Vision**

Domestic Violence Abuse and Sexual Violence are everyone's business. We believe everyone deserves to live safely without fear.

To achieve this we will work together to ensure there is support and access to services to prevent violence and abuse and to address its impact.

## Appendix 1

### Northumberland DVA and SV Business Coordination Group Domestic Abuse and Sexual Violence Needs Assessment 2017-18

#### Northumberland

Northumberland is the most Northern of the six local authorities in the Northumbria Police force area, sharing its border with Scotland and Cumbria as well as Durham, Gateshead, Newcastle and North Tyneside. Home to 316,000 people and covering an area of 5,013km, it covers a larger area than Luxembourg! With 97% of its area classed as rural, the county is sparsely populated with 63 people per km, and half of the county's population live in 3% of the urban land found in the south east of the county. Unemployment levels are higher than the national average, with 8% of residents living in areas within the 10% most deprived decile of the IMD 2015.

#### What do we know?

From April 2013 the Northumberland DVA and SV Business Coordination group has adopted the following new Home Office updated definition of domestic abuse:

“Any incident or pattern of incidents of controlling, coercive or threatening behaviour, violence or abuse between those aged 16 or over who are or have been intimate partners or family members regardless of gender or sexuality. This can encompass, but is not limited to, the following types of abuse:

- psychological
- physical
- sexual
- financial
- emotional

Controlling behaviour involves a range of acts designed to make a person subordinate and/or dependent by isolating them from sources of support, exploiting their resources and capacities for personal gain, depriving them of the means needed for independence, resistance and escape and regulating their everyday behaviour

Coercive behaviour is an act or a pattern of acts of assault, threats, humiliation and intimidation or other abuse that is used to harm, punish, or frighten their victim. This definition, which at present is not a legal definition, includes so called 'honour' based violence, female genital mutilation (FGM) and forced marriage, and is clear that victims are not confined to one gender or ethnic group.

The Government has recently announced plans for a Domestic Violence and Abuse Bill. The key elements of the Bill will be to create a clear definition of the crime in law, consolidate prevention and protection measures, ensure sentences reflect the harm that domestic abuse has upon children, and establish a new commissioner who will represent victims and survivors and drive forward progress.

Rape Crisis England and Wales uses the following definition of sexual violence:

“Sexual violence is any unwanted sexual act or activity. There are many different kinds of sexual violence, including but not restricted to: rape, sexual assault, child sexual abuse, sexual harassment, rape within marriage / relationships, forced marriage, so-called honour-based violence, female genital mutilation, trafficking, sexual exploitation, and ritual abuse.

Sexual violence can be perpetrated by a complete stranger, or by someone known and even trusted, such as a friend, colleague, family member, partner or ex-partner. Sexual violence can happen to anyone. No-one ever deserves or asks for it to happen.”

In December 2016 the Government launched Violence Against Women and Girls (VAWG) National Statement of Expectations (NSE), setting out what local areas need to put in place to ensure their response to VAWG issues is as collaborative, robust and effective as it can be so that all victims and survivors can get the help they need.

It is expected that local strategies and services:

1. Put the victim at the centre of service delivery;
2. Have a clear focus on perpetrators in order to keep victims safe;
3. Take a strategic, system-wide approach to commissioning acknowledging the gendered nature of VAWG;
4. Are locally-led and safeguard individuals at every point;
5. Raise local awareness of the issues and involve, engage and empower communities to seek, design and deliver solutions to prevent VAWG

The National VAWG strategy states clear outcomes to be achieved by 2020; a reduction in the prevalence of all forms of VAWG, matched by increases in reporting, police referrals, prosecution and convictions for what can still be hidden crimes.

## Executive Summary

### Domestic Abuse

- Domestic abuse-related offences accounted for 11% of the total offences in the Northumbria Police Force area in 2016/17.
- In 2016/17 79% domestic abuse incidents occurred where the perpetrator was a partner/ex-partner, and 43.6% of these incidents occurred where a child was present
- 77% of victims of domestic abuse incidents were female and 23% were male
- From 2014 to 2017, the number of domestic abuse incidents involving alcohol, rose by 61%.
- In the period 2016/17, there were 3,062 suspects of domestic abuse in Northumberland of which 77% were male and 23% female. The age group containing the largest number of female suspects was 26-30.
- Incidents of domestic abuse in same sex and 'non-traditional' relationships are an emerging issue.
- Domestic abuse should be addressed by supporting victims **and** treating perpetrators, according to The National Probation Service
- The Safeguarding Adults report for Northumberland and North Tyneside states that there were 52 domestic enquiries in Northumberland for April – December 2017/ (2.03 per 10,000 pop) compared to 1.54 for North Tyneside, with Northumberland experiencing a high proportion of both male and females under 35 years of age.
- Safeguarding referrals, where type of abuse is domestic abuse, shows that there has been a slight reduction in overall numbers from 2016/17 to 2017/18.
- 70% (2,145 persons) of suspects were involved in one incident, with 30% involved in two or more incidents.
- The percentage of CIN<sup>1</sup> whose primary need at assessment was Abuse or Neglect, has fallen slightly over the three year period in Northumberland. This is contrary to the England figure where the percentage figure has risen. 38.5 to 36.7%
- Number of children becoming subject of a CPP<sup>2</sup> for physical, mental and sexual abuse or neglect in Northumberland during the year 265 to 367 over 10 year period to 2017
- Data from social work assessments showed that the highest numbers of households where domestic abuse was identified over the past three years, were around Ashington, Blyth, Cramlington, Alnwick, and Berwick.
- It is nationally recognised that domestic abuse is under reported in rural areas.

---

<sup>1</sup> Children in Need - When a child is referred to children's social care with a request for services to be provided

<sup>2</sup> Child Protection Plan

- Studies show there is a clear association between experience of combat operations and subsequent violent behaviour, with over a third of victims being someone in the family.
- Domestic abuse is consistently the highest cause of homelessness in Northumberland. The vast majority of people presenting as homeless due to domestic abuse were female.

#### **Sexual violence**

- The sexual offence rate (per 10,000 pop) in Northumberland in 2015/16 was 15, which was lower than the England figure of 17
- There was a 21.5% increase in sexual offences from 2015/16 to 2016/17 in the county. The rate per 10,000 pop aged 16 and over for rape was 4.5 for 2016/17, which was the lowest in the region. The highest rate of 10.8 was found in Newcastle.
- From 15/16 to 16/17 in Northumberland, there were percentage decreases in Rape of a male aged 16 and over, Sexual grooming, Abuse of position of trust of a sexual nature, and Rape of a male child under 13.
- The highest percentage increases from 15/16 to 16/17 occurred in Sexual assault on male age 13+ and Sexual assault on male child aged under 13. Three of the top five offences with the highest percentage change, involved children

## **Key Data – Domestic Abuse**

### **National**

Domestic abuse is often a hidden crime; a comprehensive understanding of its prevalence remains a challenge. However the Crime Survey for England and Wales 2017 highlighted:

- The police recorded 511,319<sup>3</sup> offences that were domestic abuse-related in the year ending June 2017. This was an 18% increase on the 431,768 offences recorded the previous year, but the increase is partly due to improvements in crime recording by the police.
- England and Wales had a rate of 8 domestic abuse-related offences per 1000 population in 2017
- Overall, 27.1% of women and 13.2% of men had experienced any domestic abuse since the age of 16. These figures were equivalent to an estimated 4.5 million female victims of domestic abuse and 2.2 million male victims between the ages of 16 and 59
- 8.2% of women and 4.0% of men were estimated to have experienced any domestic abuse in the last year, equivalent to an estimated 1.3 million female and 600,000 male victims.<sup>4</sup> (CSEW2015)
- Female victims were more likely than male victims to be killed by someone they knew. Over two-thirds (77%) of female victims knew the main suspect, compared with 53% of male victims. In almost half of these cases, female victims were killed by a current or ex-partner (44% of all female victims, compared to 6% of males) while male victims were most likely to be killed by a friend or acquaintance (32%, compared to 12% of females).

### **Local**

A key priority for the Northumberland Domestic Abuse and Sexual Violence Business group in 2018/19 will be to identify partner data that is available and can be shared. The group will begin to collect and analysis this data to help inform a refresh of the needs assessment 2019/20.

This report relies predominantly on data from Northumbria Police, which provides an overview of the problem, but under reporting is part of the issue when considering domestic abuse.

### **Northumberland Police Data**

In 2016/17 there were 5,041 reported domestic abuse incidents, on average 420 domestic abuse incidents a month,

- 79% of the incidents were where the perpetrator was a partner/ ex-partner

<sup>3</sup> [www.ons.gov.uk/peoplepopulationandcommunity/crimeandjustice/bulletins/crimeinenglandandwales/june2017](http://www.ons.gov.uk/peoplepopulationandcommunity/crimeandjustice/bulletins/crimeinenglandandwales/june2017)

<sup>4</sup> <https://www.ons.gov.uk/peoplepopulationandcommunity/crimeandjustice/compendium/focusonviolentcrimeandsexualoffences/yearend ingmarch2015/chapter4intimatepersonalviolenceandpartnerabuse>

- In 2,197 of these incidents there were children involved (43.6%)
- Of the 5041 incidents there were 3,197 individual victims; of which:
  - 77% were female
  - 23% were male
  - 93 were from BME communities
  - 67 were aged 16 or 17 years old
  - 10% were aged over 55

Safe Lives data for Northumberland MARAC<sup>5</sup> indicates that 24% of the referrals in 2016/17 were from agencies other than the police. This is higher than the previous year (18%) but below the Safe Lives national recommendations.

## Crimes and Incidents<sup>6</sup>

**The Crime Survey for England and Wales** measures crime by asking members of the public, about their experiences of crime over the last 12 months. In this way the survey records all types of crimes experienced by people, including those crimes that may not have been reported to the police.

According to the CSEW, in the Northumbria Police force area, the number of domestic abuse incidents recorded by the Police, has risen by 10.6% in the last 3 years. 6.3% of people aged 16 to 59 stated that they had experienced at least one incident of domestic abuse over this period.



Northumberland Police recorded over 5,000 cases of domestic abuse in 2016/17. The number of arrests from these incidents has fallen from 25% to 19% over a three year period.

The number of incidents which resulted in crimes being recorded rose from 20% to 43% over the same period.

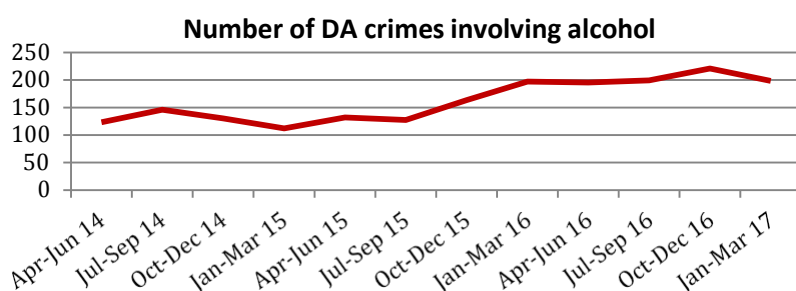
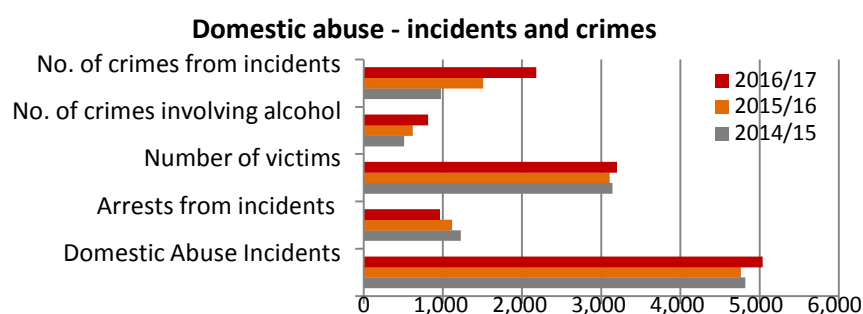
	2014/15	2015/16	2016/17
<b>Domestic Abuse Incidents</b>	<b>4,820</b>	<b>4,765</b>	<b>5,039</b>
Incidents with Children Involved	2258	2031	2,197
Arrests from incidents	1,227	1,117	965
Number of victims	3,144	3,104	3,197
No. of crimes involving alcohol	511	619	815
No. of crimes from incidents	974	1,511	2,182
Of which : Violent Crime Offences	727	1,129	1,608
MSVAP Offences	11	15	17
Rape Offences	21	30	35

Domestic abuse-related offences accounted for 11% of the total offences in the Northumbria Police Force area in 2016/17. This related to 10 offences per 1,000 population. Figures for offences and incidents showed a rate of 22 in Northumbria, but this figure increased for Northumberland (25.7 per 1000 pop).

<sup>5</sup> Multi Agency Risk Assessment Conference's (MARAC) are recognised nationally as best practice for addressing cases of domestic abuse that are categorised as high risk. A MARAC allows agencies to identify the high risk domestic abuse cases and for the identified risk to be managed through a multi-agency forum.)

<sup>6</sup> It should be noted that the following crime and victim profiles are based on known cases. As domestic abuse is prone to significant under-reporting, the actual number of offences committed will be considerably high than the stated numbers. Furthermore, certain characteristics (age, gender and ethnicity) may be under or over-represented due to the reticence of victims to report an offence.





Over the three year period from April 2014 to March 2017, the number of domestic abuse incidents involving alcohol, has risen by 61%.

Police data shows that domestic abuse incidents are on the increase and are projected to rise by 5% in the next year. As 1 in 4 women will experience domestic abuse at some point in their lives, those reporting abuse to the police are still a very small minority. It should also be noted that incidents of domestic abuse in same sex and 'non-traditional' relationships are an emerging issue.

### Northumberland Police and MARAC crime data

MARAC<sup>7</sup> combines data from various sources to provide an overview of domestic abuse in the area

MARAC - Indicator by number (Apr-Mar)	14/15	15/16	16/17
Cases discussed	449	481	417
Recommended cases	540	540	540
Cases per 10,000 adult female population	33	35	31
Children in household	755	502	431
No. harming others aged 17 or below	2	10	9
Victims aged 16-17	9	6	10
Year on year change in cases	16%	7%	-13%

It can be seen that there has been an increase in the percentage of referrals from partner agencies, victims who are non-white, and younger victims.

MARAC - Indicator by percentage (Apr-Mar)	14/15	15/16	16/17
% Repeat cases	29%	33%	30%
% Referrals from Police	79%	82%	76%
% Referrals from partner agencies	21%	18%	24%
% of referrals of LGBT victims	3.8%	3.0%	4.0%
% of referrals of victims who are non-white British	1.3%	0.8%	2.9%
% of referrals of victims who have a disability	2.4%	4.4%	3.1%
% of referrals of male victims	5.6%	7.7%	5.8%
% cases where victims aged 16-17	2.0%	1.2%	2.4%

<sup>7</sup> Multi Agency Risk Assessment Conference

## Key Data - Sexual Violence

### National

#### CSEW results for sexual violence

2013 statistics from an Overview of Sexual Offending in England and Wales<sup>8</sup>, analysed the experiences that survey respondents had of sexual violence regardless of whether they had reported or not, for both England and Wales. Results show that there were:

85,000	women raped
437,000	victims of sexual violence
500,000	adults sexually assaulted
1 in 5	women (aged 16-59) experiences some form of sexual violence since the age of 16
90%	of those who were raped, knew the perpetrator prior to the offence
31%	of young women aged 18-24 had experienced sexual abuse in childhood
15%	of victims reported the offence
33%	of people believe women who flirt are partially responsible for being raped

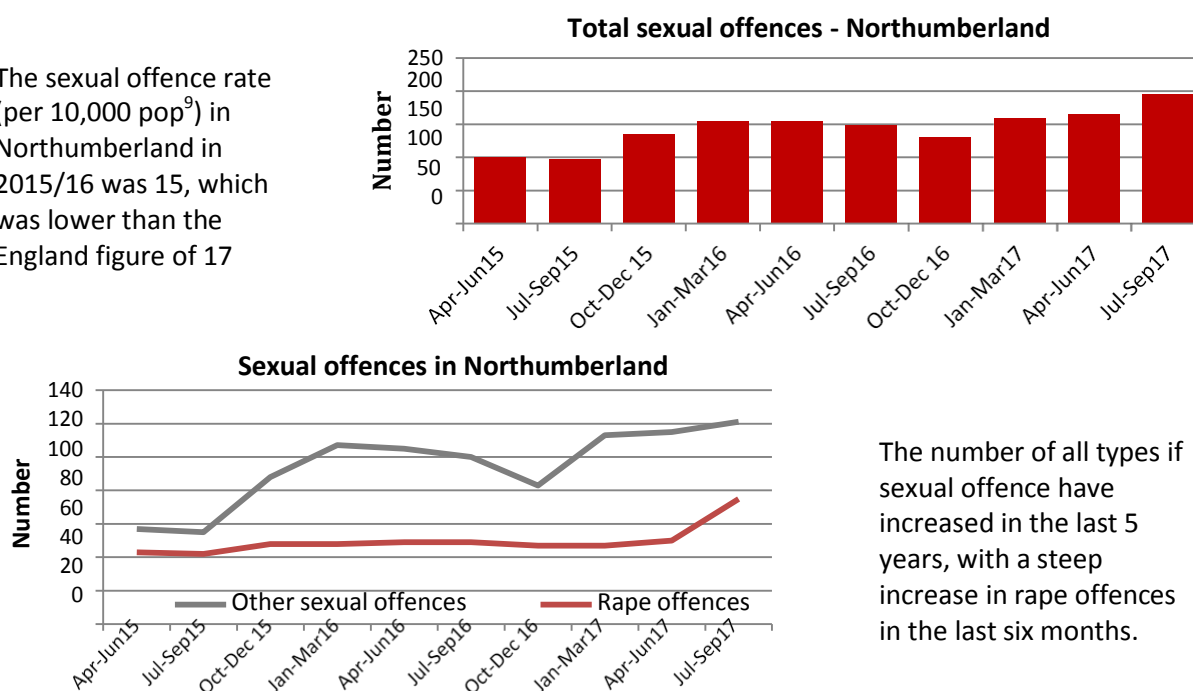
For the year ending Sept 2017, In England and Wales, police recorded data highlighted that:

- 138,045 police recorded sexual offences in the year ending September 2017 of which 48,773 were classed as rape.
- A 23% increase in recorded sexual offences on the year ending September 2016.
- A 29% increase in recorded rape on the year ending September 2016.
- Offence categories that directly relate to sexual offences against children contributed over one-third (37%) to the total increase in the number of sexual offences recorded by the police.

### Local

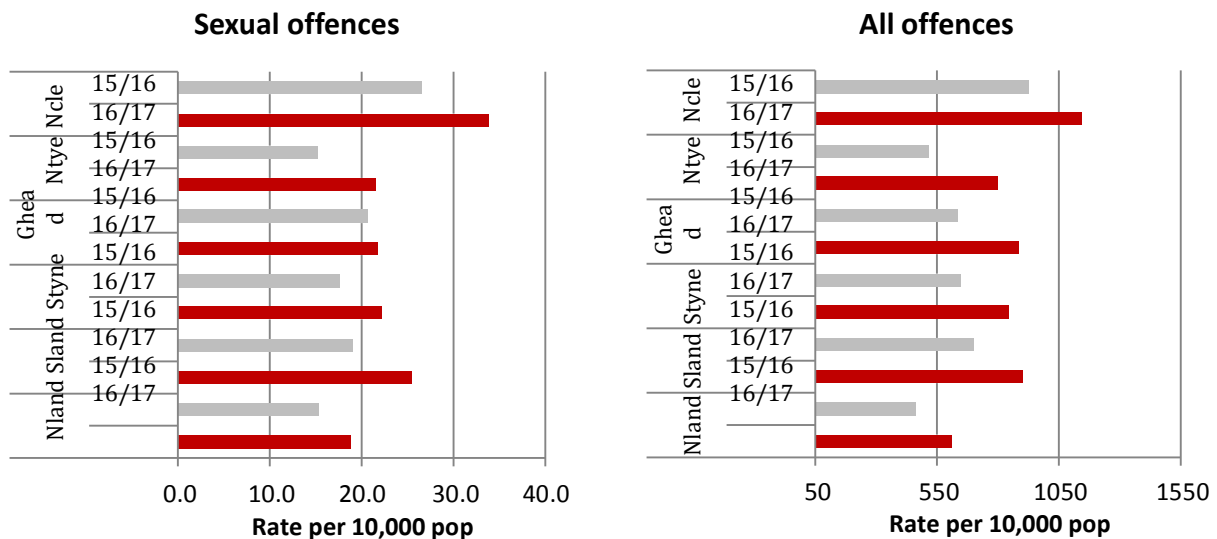
#### Sexual offences Northumberland

The sexual offence rate (per 10,000 pop<sup>9</sup>) in Northumberland in 2015/16 was 15, which was lower than the England figure of 17



<sup>8</sup> Ministry of Justice Statistics bulletin 2013 Source: ONS Northumbria Police

<sup>9</sup> ONS Northumbria Police



The rate of sexual offences and all recorded offences is lower in Northumberland than other Northumbria areas, for both 2015/16 and 2016/17.

There was a 21.5% increase in sexual offences from 2015/16 to 2016/17. The highest percentage increases were shown in Sexual assault on male age 13+ and Sexual assault on male child aged under 13. Three of the top five offences with the highest percentage change, involved children

Offence description	Apr-15-Mar16	Apr16-Mar17	% change
All sexual offences	488	593	21.5
Sexual assault on a male aged 13 and over	16	33	106.3
Sexual assault on a male child under 13	14	28	100.0
Sexual activity involving child under 16	47	68	44.7
Rape of a female child under 13	27	36	33.3
Sexual assault on a female aged 13 and over	82	103	25.6

Over the two year period in Northumberland, there were percentage decreases in Rape of a male aged 16 and over, Sexual grooming, Abuse of position of trust of a sexual nature, and Rape of a male child under 13.

#### Sexual offences - Rape

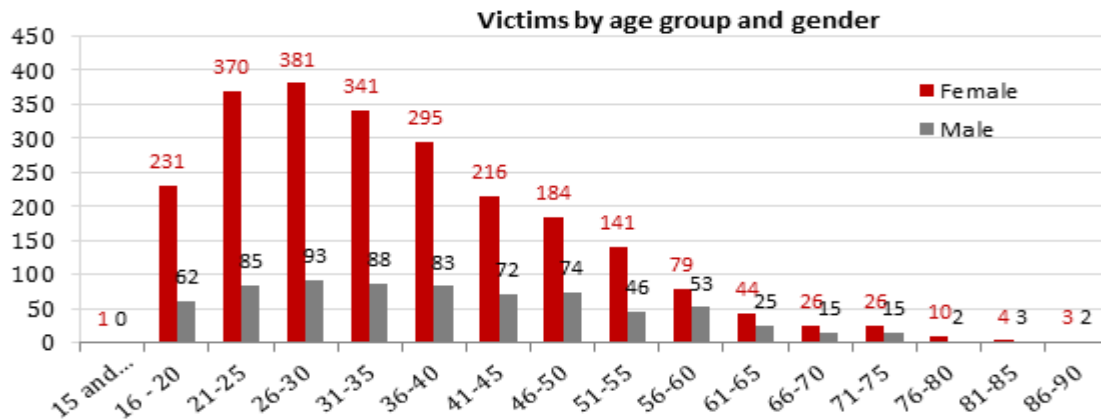
01/04/2016 to 31/03/2017

	Northern		Central		Southern	
	North Tyneside	Northumberland	Gateshead	Newcastle	Sunderland	South Tyneside
Attempted rape of a female aged 16 or over	6	2	2	6	6	3
Rape of a female aged 16 or over	96	110	91	233	155	72
Attempted rape of a male aged 16 or over	0	0	0	0	1	0
Rape of a male aged 16 or over	7	6	3	25	7	2
<b>Total</b>	<b>109</b>	<b>118</b>	<b>96</b>	<b>264</b>	<b>169</b>	<b>77</b>
Pop aged 16 and over	167,008	264,041	166,105	245,241	229,713	123,210
Rate per 10,000 pop aged 16 and over (2016 MYE)	6.5	4.5	5.8	10.8	7.4	6.2

Newcastle showed the highest rate (per 10,000 pop) of sexual offences with a figure of 10.8, compared to Northumberland who had the lowest figure in the Northumbria Police force area of 4.5

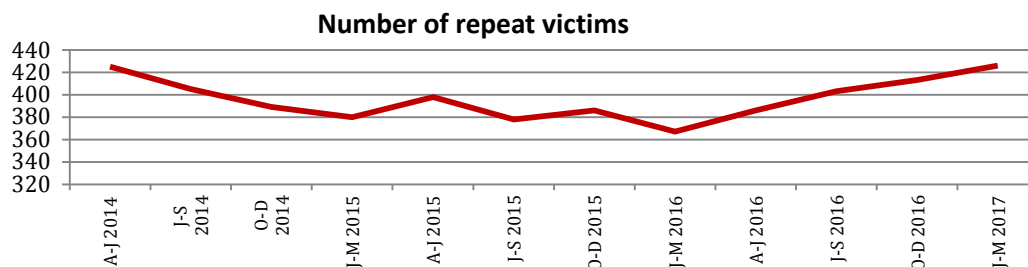
## Victims

In the period 2016/17 there were over 5,000 incidents of domestic abuse in Northumberland, which were reported to the Police. These involved over 3,000 victims, of which 77% were female and 23% male. 27% of victims were involved in more than one incident of domestic abuse.

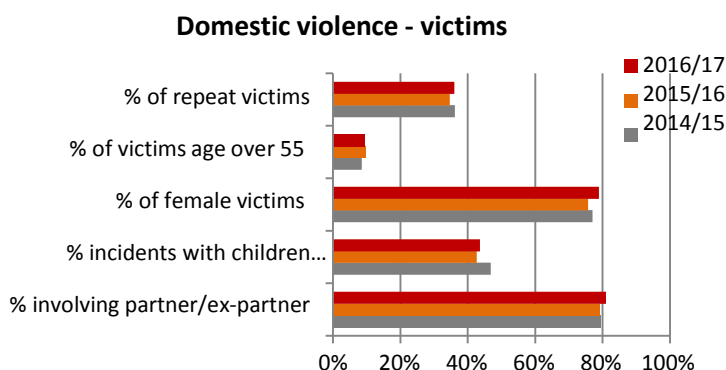


The largest number of female victims was in the 26-30 age group, and this was the same for male victims. Nationally male victims represent a significant minority (13.2%), but locally this is more significant and further analysis needs to be carried out for the reasons behind this.

80% of incidents involved a partner or ex-partner, with 20% involving other members of the family. 20% of victims were classed as high risk on the initial risk level.



After showing a slight decrease in the number of repeat victims from Apr 14 to Mar 16, the number of has increased in the last year.

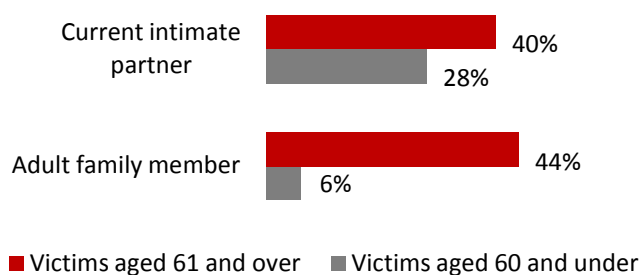


36% of victims were repeat victims and this percentage was relatively constant over the three year period.

The percentage of victims over 55 has risen over the period from 8.6% to 9.5%.

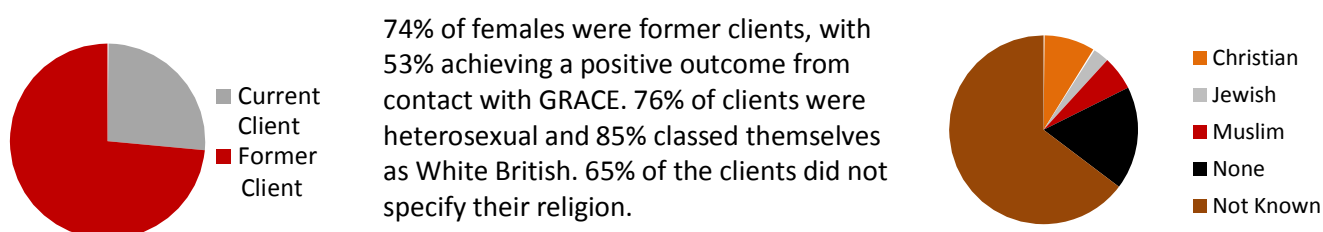
In 2016/17, 81% of incidents involved a partner or ex-partner, and 44% were incidents where children were involved.

## Older people and domestic abuse<sup>10</sup>

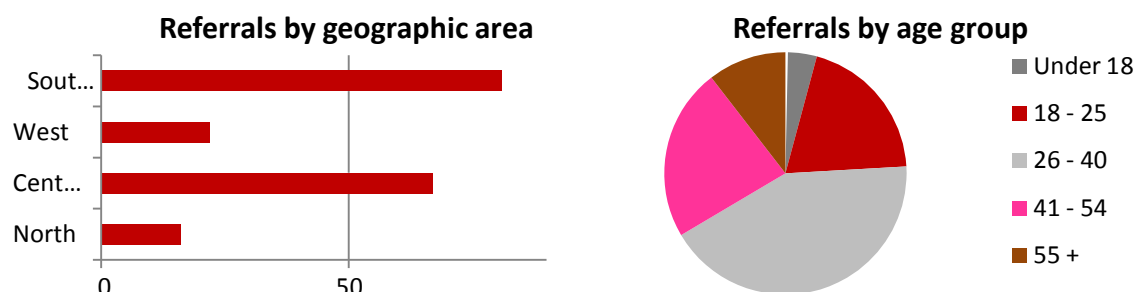


Victims aged 61 and over are much more likely to experience abuse from an adult family member or current intimate partner, than those aged 60 and under. Older victims are less likely to attempt to leave in the year before accessing help, and more likely to be living with the perpetrator after getting support. Older victims (48%) are significantly more likely to have a disability, compared to 13% of victims aged 60 and under.

2017 information from Rape Crisis Tyneside and Northumberland (GRACE) provides data from females who have been affected by any form of sexual violence in their lives.



Cygnus<sup>11</sup>, a service which provide support and services for health and wellbeing in Northumberland, reported that in 2017, 43.5% of referrals are from the South East of Northumberland. 44% of referrals are for people aged between 26 and 40, and the lowest proportion of referrals are for people aged 55 and over at 4%.



## Protection notices, protection orders and DV Disclosure scheme

In the Northumbria police force area, for the year ending June 2017, 283 DV protection notices and 253 DV protection orders were granted.

		Number
Domestic violence protection notices	Applied	302
	Granted	283
Domestic violence protection orders	Applied	283
	Granted	253
Domestic violence Disclosure Scheme (Clare's Law)	Right to Know applications	93
	Right to Know disclosures	13
	Right to Ask applications	180
	Right to Ask disclosures	12

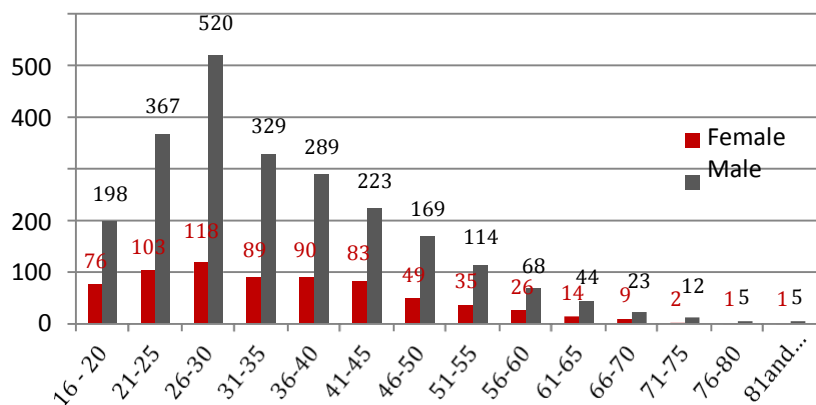
<sup>10</sup> Source: Safer Lives

<sup>11</sup> Cygnus provide support and services for health and wellbeing of women and men in Northumberland

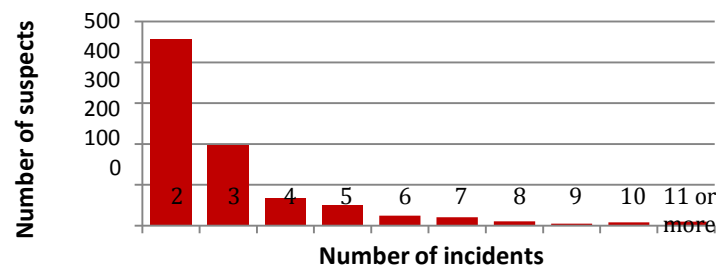
## Suspects

In the period 2016/17, there were 3,062 suspects of domestic abuse in Northumberland of which 77% were male and 23% female. The age group containing the largest number of female suspects was 26-30.

Suspects by age group and gender



Number of suspects and frequency of incidents



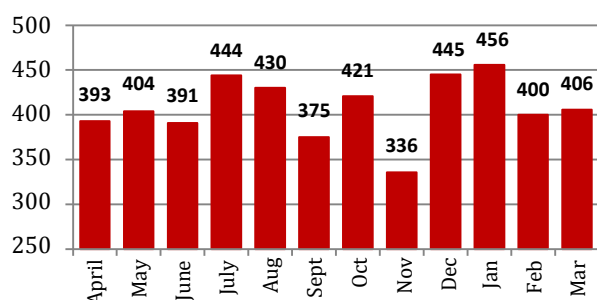
30% of these people were suspected of repeat offences

2,145 persons were suspects on only one occasion which accounted for 70% of all suspects. 15% of suspects (853) were involved in two incidents, and 23 suspects were involved in 10 or more incidents.

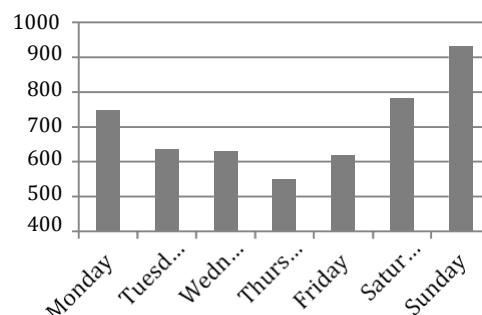
The National Probation Service feels that domestic abuse is best addressed by not only supporting victims **but** also treating perpetrators. By using data on the characteristics of perpetrators, and addressing their risks and behaviours, this will help to keep victims safe.

## Seasonality

No. DV incidents by month 16/17



Incidents by day



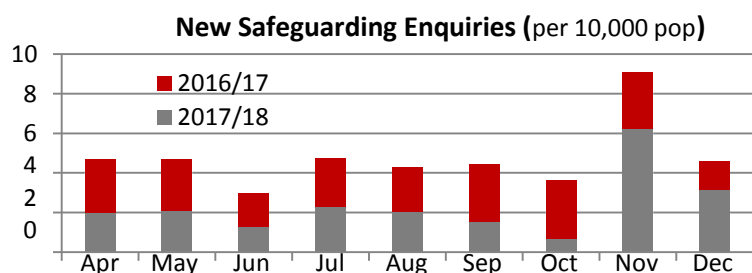
## Adult Social Care

Partner<sup>12</sup> information for Northumberland and North Tyneside shows data for April – December of the 2017/18 financial year. The Safeguarding Adults dashboard states that there were 52 domestic enquiries in Northumberland for the period (2.03 per 10,000 pop) compared to 1.54 for North Tyneside, with Northumberland experiencing a high proportion of both male and females under 35 years of age.

### Northumberland MARAC contacts in year<sup>13</sup>

	Female	Male	Not recorded	TOTAL
2016/17	228	169	2	399
2017/18	225	139	5	369

The number of MARAC contacts in Northumberland in the year has fallen from 399 in 2016/17 to 369 in 2017/18, a reduction of 8%.



### Safeguarding Enquiries

New Section 42 Enquiries per month shows a reduction in the summer months in Northumberland, but a steep increase in November and December. Comparison figures for North Tyneside are lower overall for all months.

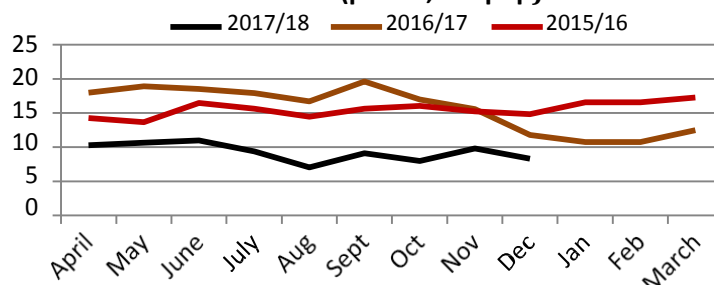
Age Band	2016/17				2017/18			
	Female	Male	NK	Total	Female	Male	NK	Total
18-24	6	0	0	6	5	0	0	5
25-34	11	0	1	12	5	1	0	6
35-44	6	0	0	6	5	1	0	6
45-54	5	1	0	6	12	3	0	15
55-64	10	1	0	11	5	1	0	6
65-74	7	1	0	8	4	0	0	4
75-84	7	1	0	8	8	1	0	9
85-94	4	2	0	6	1	1	0	2
N/K	1	0	2	3	0	0	1	1
<b>Total</b>	<b>57</b>	<b>6</b>	<b>3</b>	<b>66</b>	<b>45</b>	<b>8</b>	<b>1</b>	<b>54</b>

where type of abuse is domestic abuse, shows that there has been a slight reduction in overall numbers.

### Monthly safeguarding contacts

Northumberland Safeguarding Adults team have carried out work to identify Adult Concern Notifications and Safeguarding Referrals which has led to a significant reduction in numbers compared to the same period in previous years.

### Northumberland - Monthly Safeguarding contacts (per 10,000 pop)

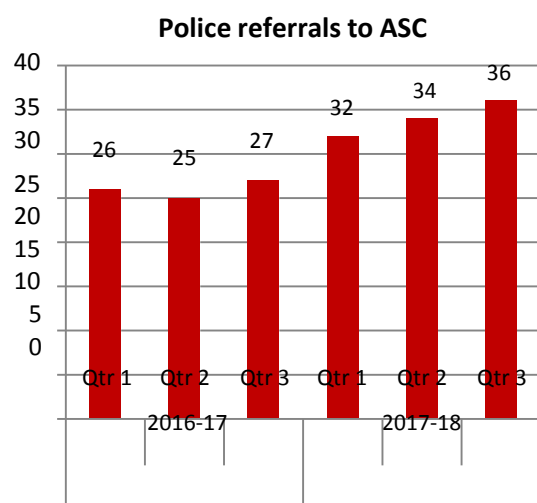


<sup>12</sup> Northumberland and North Tyneside Safeguarding Adults Board

<sup>13</sup> Swift – Information Services Adult social Care

<sup>14</sup> Swift – Information Services Adult social Care

## Police Referrals<sup>15</sup>

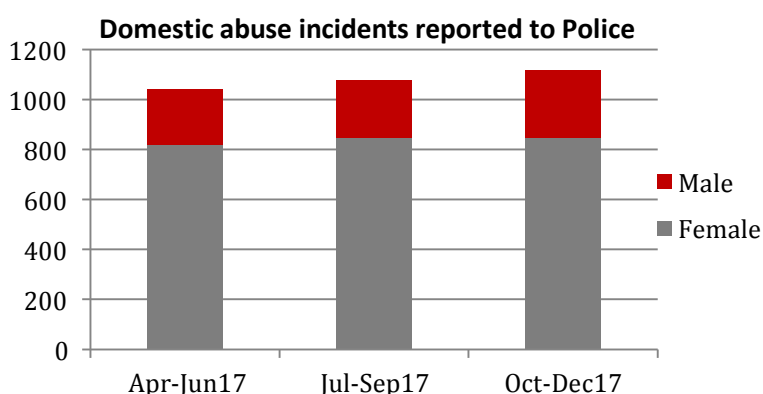


Referrals to ASC from the Police have increased during the first three quarters of 2017-18. There was a 32% increase in YTD referrals for Northumberland, which was higher than the North Tyneside figure of 20%. This equates to 66.31 per 10,000 persons in Northumberland and 57.93 for North Tyneside.

Over the period, in total there were 205 safeguarding concerns for Northumberland adult residents. There were 82 concerns from community services, all raised by adult clinicians.

36 were referred to LA safeguarding, 25 of those to Northumberland LA, 11 were referrals to other safeguarding LAs. A further 123 concerns were raised by inpatient wards across the trust for those Northumberland residents.

Police recorded a total of over 4,100 domestic abuse incidents for Northumberland during the first three quarters of 2017/18, which was a 9.5% increase in comparison to the same period 2016/17 where 3,746 abuse incidents were reported. There was an increase of 10.7% of incidents for females compared to 2016/17 and an increase of 14.6% for male victims.



## Children Social Care Data:

### Number of children in need at 31 March 2017, by local authority and primary need at assessment

Local authority	Mar-15			Mar-16			Mar-17		
	Number of CIN	N1 - Abuse or neglect		Number of CIN	N1 - Abuse or neglect		Number of CIN	N1 - Abuse or neglect	
	No	No	% CIN	No	No	% CIN	No	No	% CIN
Northumberland	3,364	1,295	38.5	2,900	1,113	38.4	2,485	912	36.7
North East	23,680	10,490	44.3	23,150	10,530	45.5	23,740	10,890	45.9
England	390,960	192,940	49.4	394,400	199,720	50.6	389,430	203,760	52.3

These are statistics on children referred to and assessed by children's social services<sup>16</sup>.

N1 – A,N Primary need - Abuse or neglect

<sup>15</sup> Northumberland and North Tyneside Safeguarding Adults Board

<sup>16</sup> <https://www.gov.uk/government/collections/statistics-children-in-need>

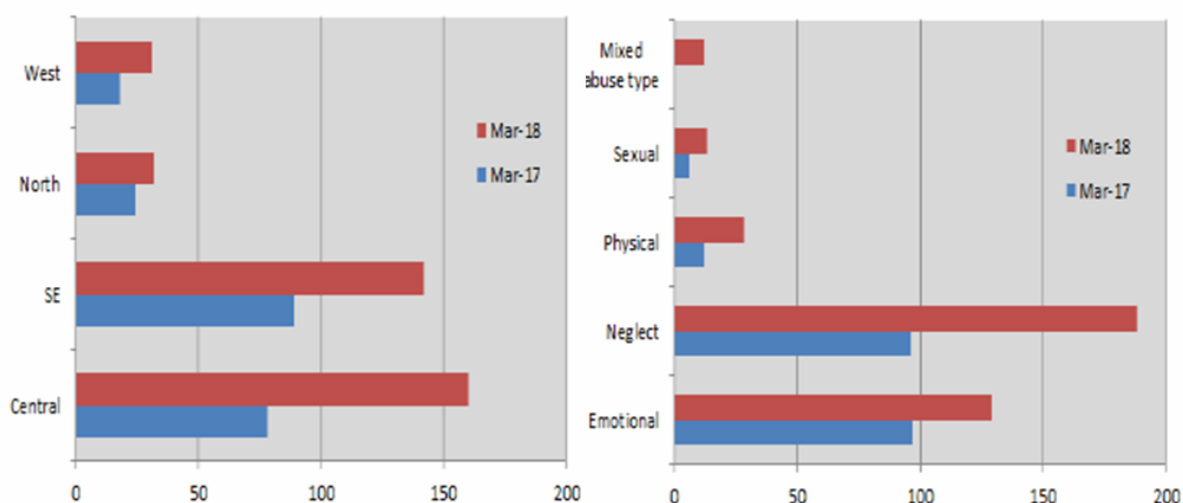


The percentage of CIN whose primary need at assessment was Abuse or Neglect, has fallen slightly over the three year period, in Northumberland. This is contrary to the England figure where the percentage figure has risen.

#### Number of children becoming subject of a CPP<sup>17</sup> for physical, mental and sexual abuse or neglect in Northumberland during the year

2008	2009	2010	2011	2012	2013	2014	2015	2016	2017
265	220	287	182	233	327	355	326	396	367

There has been a large increase between 2012 and 2013, which has further increased in the last 2 years. Our local analysis shows that much of this increase has been due to a rise in CP plans starting due to neglect (see graphs below).



#### Rate (per 10,000) of children who became the subject of a child protection plan during the year for physical, mental and sexual abuse or neglect

rate per 10,000 of the CYP population)	Physical abuse			Emotional abuse			Sexual abuse			Neglect		
	2015	2016	2017	2015	2016	2017	2015	2016	2017	2015	2016	2017
Northumberland	4.80	4.40	6.30	15.90	18.60	26.30	2.70	1.40	-	24.1	40.9	27.6
South Tyneside		3.8	3.7	20.1	11.6	7.5		0.3	0	59.0	58.6	57.9
Sunderland	4.4	7.4	5.5	6.1	24.9	32.3	1.7	5.5	5.3	67.0	62.6	74.5
North Tyneside	7.4	6.4	3.9	12.6	17.3	15.5	4.9	3.7	-	31.1	31.7	37.4
Newcastle	5.9	7.8	9.1	38.0	29.9	24.0	2.0	1.4	2.3	33.9	35.2	39.1
Gateshead	7.7	5.5	5.7	15.2	21.3	20.2	3.5	2.5	5	48.3	55.4	68.2
North East	8.30	7.10	6.40	18.10	17.00	19.10	2.40	2.80	2.7	40.6	44.1	50.4
England	5.40	5.30	4.90	14.60	19.2	19.30	2.50	2.50	2.5	23.2	24.3	26.3
Source: <a href="https://www.gov.uk/government/statistics/characteristics-of-children-in-need">https://www.gov.uk/government/statistics/characteristics-of-children-in-need</a>												

#### Households with DV as a factor

Data from social work assessments showed that the highest numbers of households where domestic

<sup>17</sup> Child Protection Plan

abuse was identified over the past three years, were around Ashington, Blyth, Cramlington, Alnwick, and Berwick. Map No. 1 shows LSOAs where these households are located.

Map No. 2 shows the number of households referred to children's social care with domestic abuse identified at referral. This again shows concentrations in the Ashington area as well as Bedlington, Blyth and Prudhoe.

## **APVA**

Adolescent to Parent Violence and Abuse is a recognised form of domestic violence and abuse, involving children aged 16 and under. This can include physical violence from an adolescent towards a parent, abusive behaviours including damage to property, emotional abuse, and economic/financial abuse.

The first large scale study of APVA in the UK was conducted by the University of Oxford between 2010 and 2013. Practitioners and parents interviewed in this study described the abuse as often involving a pattern of aggressive, abusive and violent act across a prolonged period of time. As well as physical assaults, parents interviewed said their teenage children also smashed up property, kicked holes in doors, broken windows, had thrown things at parents and made threats. Verbal abuse and other controlling behaviours were also commonly present. The national charity Family Lives runs a helpline for parents, which receives substantial numbers of phone calls from parents experiencing violence from their children. In 2010 it was reported that between June 2008 and June 2010, the helpline received 22,537 phone calls from parents reporting aggression from their children, 7,000 of which involved physical aggression.

In Northumberland, over a six month period, the AVPA project worker<sup>18</sup> engaged in 15 active interventions, some of which were delivered in conjunction with the Youth Offending Service Parenting Support Worker. There was engagement with a further 22 cases in terms of advising care teams on assessment and interventions. This resulted in practitioners being more aware of assessing appropriately and identifying individual need within families.

The majority of referrals involved white British males aged between 12 and 17, and most of the young people referred were identified as having some additional learning and communication needs and conditions such as ADHD and ASD.

Over the last financial year (Apr17 – Mar18) there were 79 APVA referrals in Northumberland, referred from 38 different households.

## **Cost of domestic abuse**

The Department for Education has estimated the average cost of responding to one DV incident to be £23,315<sup>19</sup>. Domestic violence and abuse cost the UK an estimated £15.7 billion in 2008 (*Walby 2009*). This included:

- more than £3.9 billion for the criminal justice system, civil legal services, healthcare, social services, housing and refuges
- more than £1.9 billion for the economy (based on time off work because of injuries).
- just over £9.9 billion in 'human and emotional' costs, for example, the cost of domestic murders and attempted murders, threatening behaviour and the subsequent pain, suffering and fear caused.

Based on the economic analysis on DV guidance from NICE:

- The cost of support provided for one person by an independent domestic abuse adviser is estimated at £4,300. Support per person lasts for a period of approximately 3 months.
- it costs an estimated £19,000 to £30,000 per annum to employ one independent domestic abuse adviser (depending on local circumstances).

<sup>18</sup> Sept 17 to March 18 funded by Northumbria Police Crime Commissioner

<sup>19</sup> Centre for Excellence and Outcomes in Children and Young People's Services, 2011

- The cost per person of providing cognitive trauma therapy was estimated at £1,600. This includes 9 sessions of therapy by a psychologist.

Research suggests domestic abuse is underreported, so identifying gaps in service provision will result in the identification of more people who need help, and so additional resources may be required. Also, much of the expertise and support for people who experience domestic abuse lies in the voluntary and community sector, where funding and capacity is generally limited, in a landscape of reducing funding.

### **Rural Communities<sup>20</sup>**

The number of reported incidents of domestic abuse are similar in rural and urban areas, although the problem of under-reporting is thought to be higher in rural areas.

Northumberland covers large rural areas. Reaching those experiencing domestic abuse can be a real challenge. There is much research around domestic abuse and rurality which tells us that the more isolated a victim is geographically the less visible they become.

Rural communities are often close knit, causing problems of confidentiality, which worsens the hidden nature of domestic abuse. Research also suggests that those living in rural areas are more likely to be unemployed, face lower levels of income and also live within communities with lower educational qualifications. In terms of domestic abuse a combination of these factors may lead the victim to become economically dependent and restrict their ability to leave, which could increase the probability that they will experience domestic violence

The problem of domestic abuse is further compounded in rural areas, by the lack of appropriate services and poor transport links, the distance of emergency services and the availability of refuge places. This lack of support for victims of domestic abuse may well mean that victims have to relocate to urban areas to access services, which results in their family and support networks being broken. Organisations who provide services for victims of domestic abuse such as Women's Aid and Rape Crisis Centres often find it easier to obtain funding for projects in an urban area, with rural areas having a skeleton service or no service at all.

The police are usually the first agency victims of domestic abuse will contact, but in rural areas there are lower levels of police and increased response times. As well as the police, there are other institutions such as the church or GPs which can have an influential role within rural communities. Awareness raising is ongoing for all agencies, and training to ensure that all frontline practitioners are able to identify domestic abuse and have the confidence to "ask the question" is also key.

### **Armed Forces**

In Northumberland there are only two locations housing military personnel. Data is not available for these sites, although there are studies based on personnel throughout the UK.

Studies<sup>21</sup> show there is a clear association between experience of combat operations and subsequent violent behaviour. Research suggests that 12.6% of Regulars (one in eight) have physically assaulted someone in the weeks following deployment with there being a strong association with combat. Over a third of victims are someone in the family – ordinarily a wife or girlfriend. Similarly, men who have served in the UK Armed Forces are more likely to commit a violent offence at some point during their lives than their civilian counterparts – and those who are under 30 are considerably more likely to do so.

---

<sup>20</sup> The Strategic and Community Safety response to domestic violence in a rural area – Northumbria University 2011

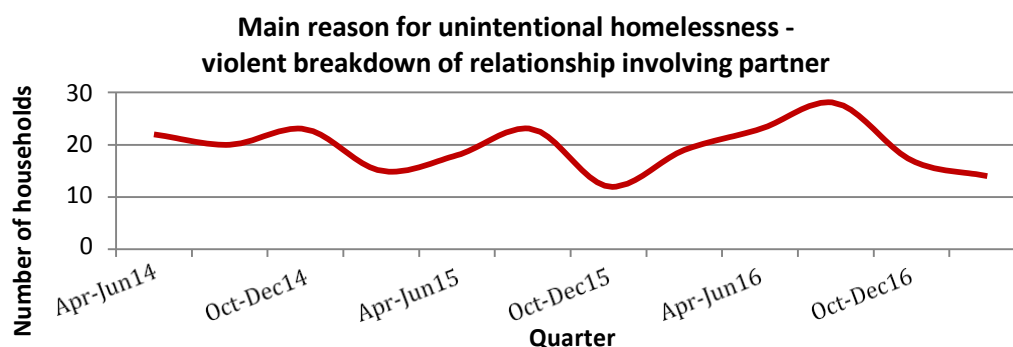
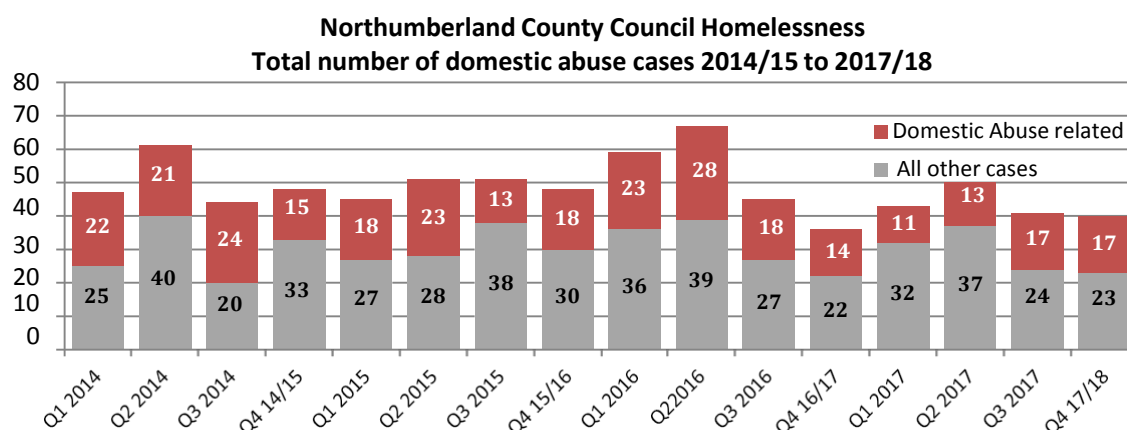
<sup>21</sup> The Lancet March 2013

## Links with homelessness<sup>22</sup>

Domestic abuse is consistently the highest cause of homelessness in Northumberland.

From April 2014 to March 2018 the vast majority of people presenting as homeless due to domestic abuse were female. In 2015 five males were accepted as homeless due to domestic abuse this was the highest total over a four year period from 2014 to 2018.

Over the last year (2017/18) 58 households were found to be homeless due to domestic abuse; included within the 58 households was a total of 93 dependent children.



In Northumberland, over the past three years, unintentional homelessness due to violence involving a partner, has ranged from 12 to 28 households.



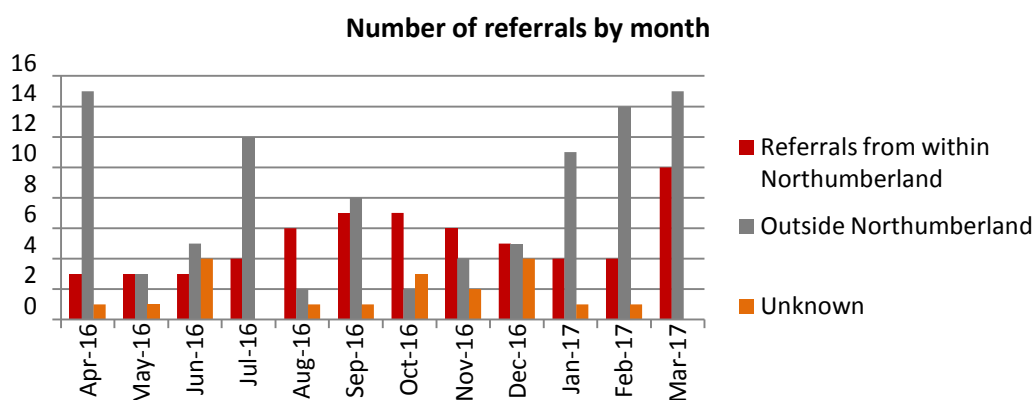
<sup>22</sup> <https://www.gov.uk/government/statistical-data-sets/live-tables-on-homelessness#detailed-local-authority-level-responses-prevention-and-relief>

### Home Group data

During the last year, the Home Group had 35 clients, 8 of whom were referred by Domestic Abuse. Referrals from outside Northumberland increased over the same period.

### Home Group Client Movement data

Referred by		Length of stay		Positive/negative move	
Council	7	one month	6	Positive	19
Domestic Abuse services	8	two months	4	Negative	5
Homeless Services	8	six months	8	Ongoing	9
Police	3	over six months	5	Unknown	2
Self	7	ongoing	12	<b>Total</b>	<b>35</b>
Unknown	2	<b>Total</b>	<b>35</b>		
<b>Total</b>	<b>35</b>				



It should be noted that there are other housing associations and providers including Places for People Living+, who collect similar data which will be included in future.

### What are the Key Inequalities?

Violence and abuse are mainly experienced by women and children, from all backgrounds, and for many their experience remains undisclosed with often devastating consequences for their long-term mental and physical health. It is no respecter of ethnicity, sexual orientation, class or age, with the impact of abuse of the elderly often poorly reported.

### Who is most at risk and why?

National and local data indicates that female victims are at highest risk, with those aged 16 to 24 years old at highest risk of becoming victims of domestic abuse. This has been recognised by government and the national definition of domestic abuse was extended to include 16 and 17 year olds from April 2013.

Large numbers of domestic abuse incidents go unreported to the police and other agencies, those not reporting and accessing support are at risk as domestic abuse is recognised as a crime with a high incidence of repeat victimisation.

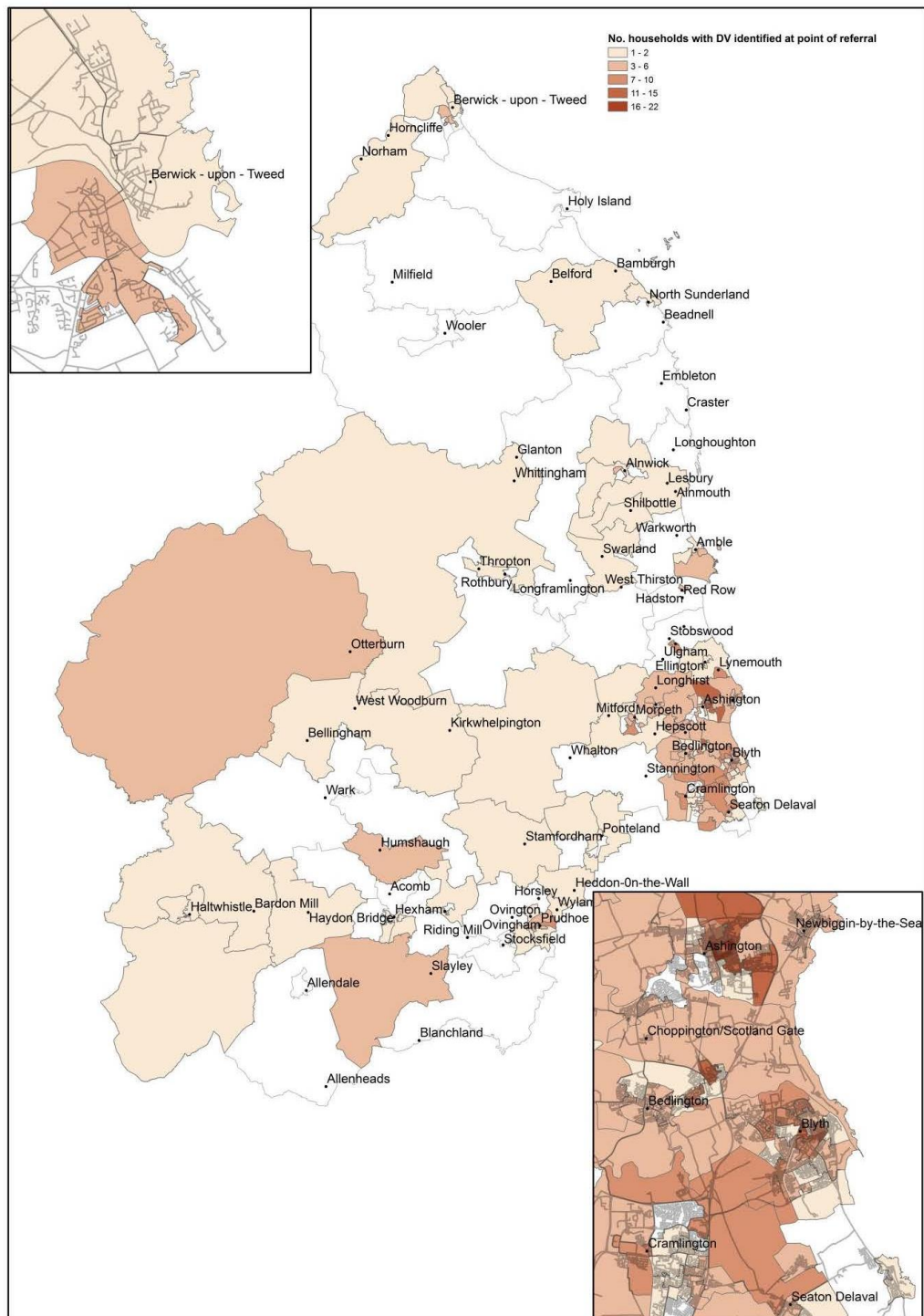
A high risk victim of domestic abuse is someone who has been identified as being at risk of current or future serious harm or murder. The level of risk is identified by the police and multi-agency partners using a common risk assessment checklist.

The Adoption and Children Act 2002 states that children living in households where domestic abuse is occurring are identified 'at risk' and extended the legal definition of harm to include harm suffered

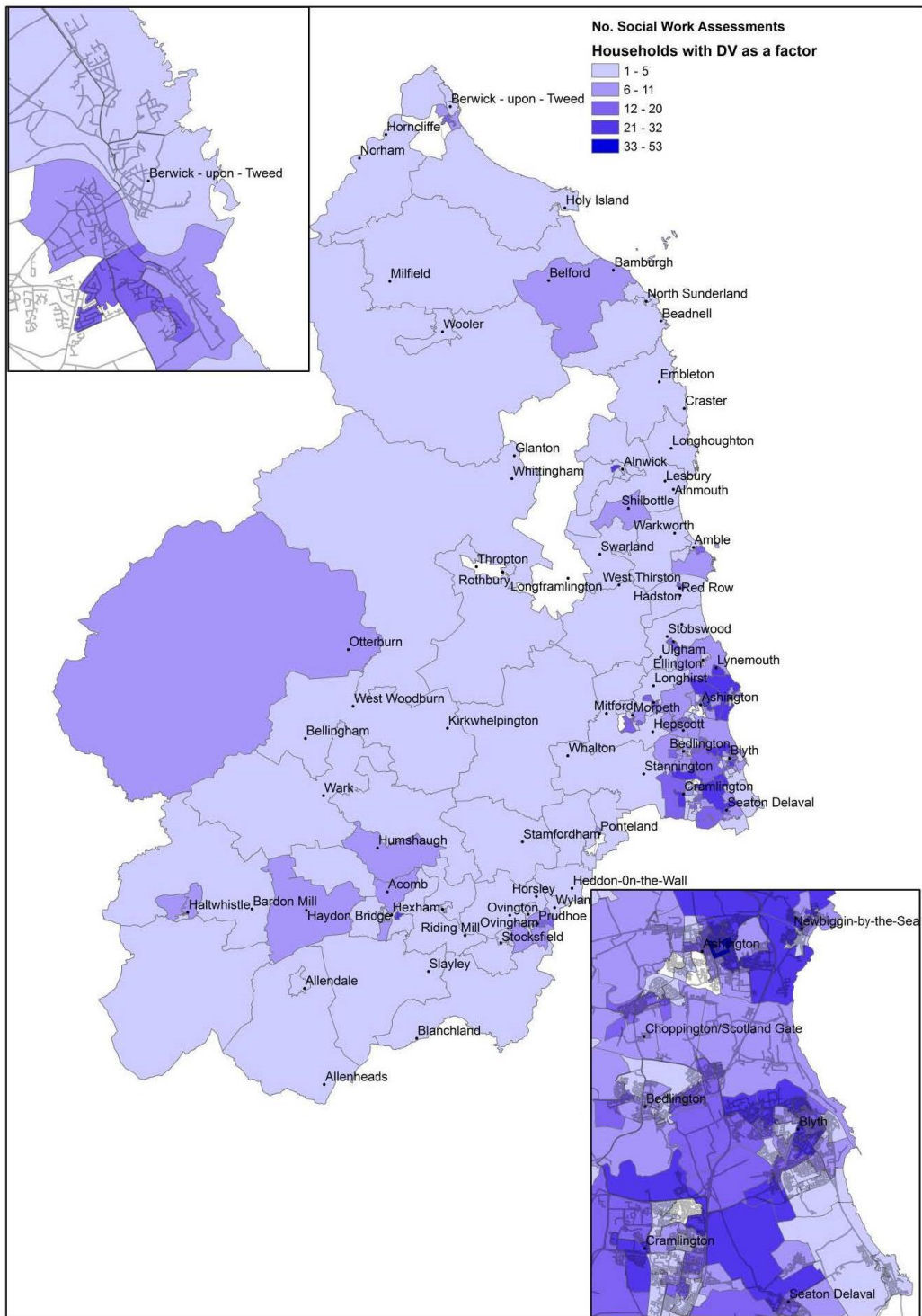
by seeing or hearing ill treatment of others. The 2011 Munro Review of Child Protection found domestic abuse to be a significant factor in child protection with up to ¾ cases linked to domestic abuse, substance misuse and/or mental health problems in parents/carers.

Physical and sexual violence and abuse have direct health consequences and are risk factors for a wide range of long-term health problems, including mental health problems, alcohol misuse, trauma, unwanted pregnancy, abortion, sexually transmitted infections and risky sexual behaviour

Appendix Map 1



Map 2





## Appendix 2

### UK Legislation

Legislation now underpins the domestic violence and abuse definition. Coercive or controlling behaviour is a criminal offence, as is stalking. Protection orders for domestic violence and abuse, sexual violence, forced marriage and female genital mutilation (FGM) can now be enforced to protect individuals before harm occurs.

Domestic violence protection orders (DVPOs) provide protection to victims by enabling police and magistrates to put in place protection in the immediate aftermath of a domestic violence incident. A perpetrator can be banned from returning to a residence with immediate effect and from having contact with the victim for up to 28 days, allowing the victim time to consider their options and get the support they need.

The coercive or controlling behaviour offence came into force in December 2015. It carries a maximum 5 years imprisonment, a fine or both. Victims who experience coercive and controlling behaviour that stops short of serious physical violence, but amounts to extreme psychological and emotional abuse, can bring their perpetrators to justice.

The domestic violence disclosure scheme allows an individual to ask police to check whether a new or existing partner has a violent past. This is the 'right to ask'. If records show that an individual may be at risk of domestic violence from a partner, the police will consider disclosing the information. A disclosure can be made if it is legal, proportionate and necessary to do so. Where an agency believes that an individual is at risk of domestic violence from their partner, the agency can apply for a disclosure as a 'right to know'. The police can release information if it is lawful, necessary and proportionate to do so.

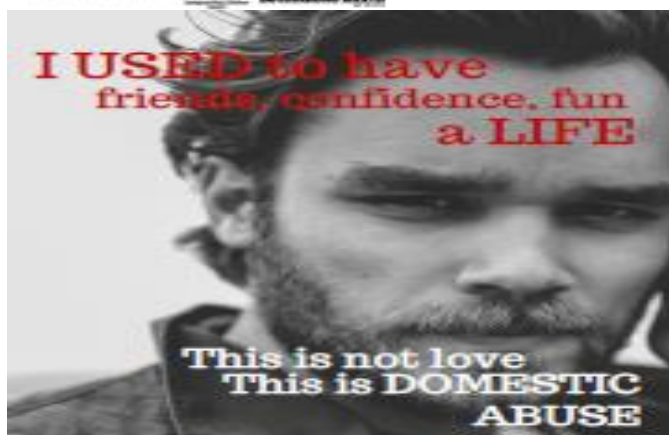
In 2015 domestic abuse was added to the Care Act 2014 as an adult safeguarding category in recognition of those victims who have care and support needs that limit their ability to protect themselves.

Female Genital Mutilation is a criminal offence. It is also illegal to aid, abet, counsel, and procure the performance of FGM on a UK national or permanent resident abroad (Female Genital Mutilation Act 2003).

The Sexual Offences Act 2003 came into force on the 1st May 2004 and applies to all offences committed on or after that date. Its purpose was to strengthen and update the law on sexual offences, whilst improving the protection of individuals from sexual offenders.



If you are experiencing domestic abuse, or know someone who is call NDAS on 01434 608030, Cygnus Support on 01670 853977 or Northumberland Women's Service on 01670 820199



If you are experiencing domestic abuse, or know someone who is call NDAS on 01434 608030, or Cygnus Support on 01670 853977

