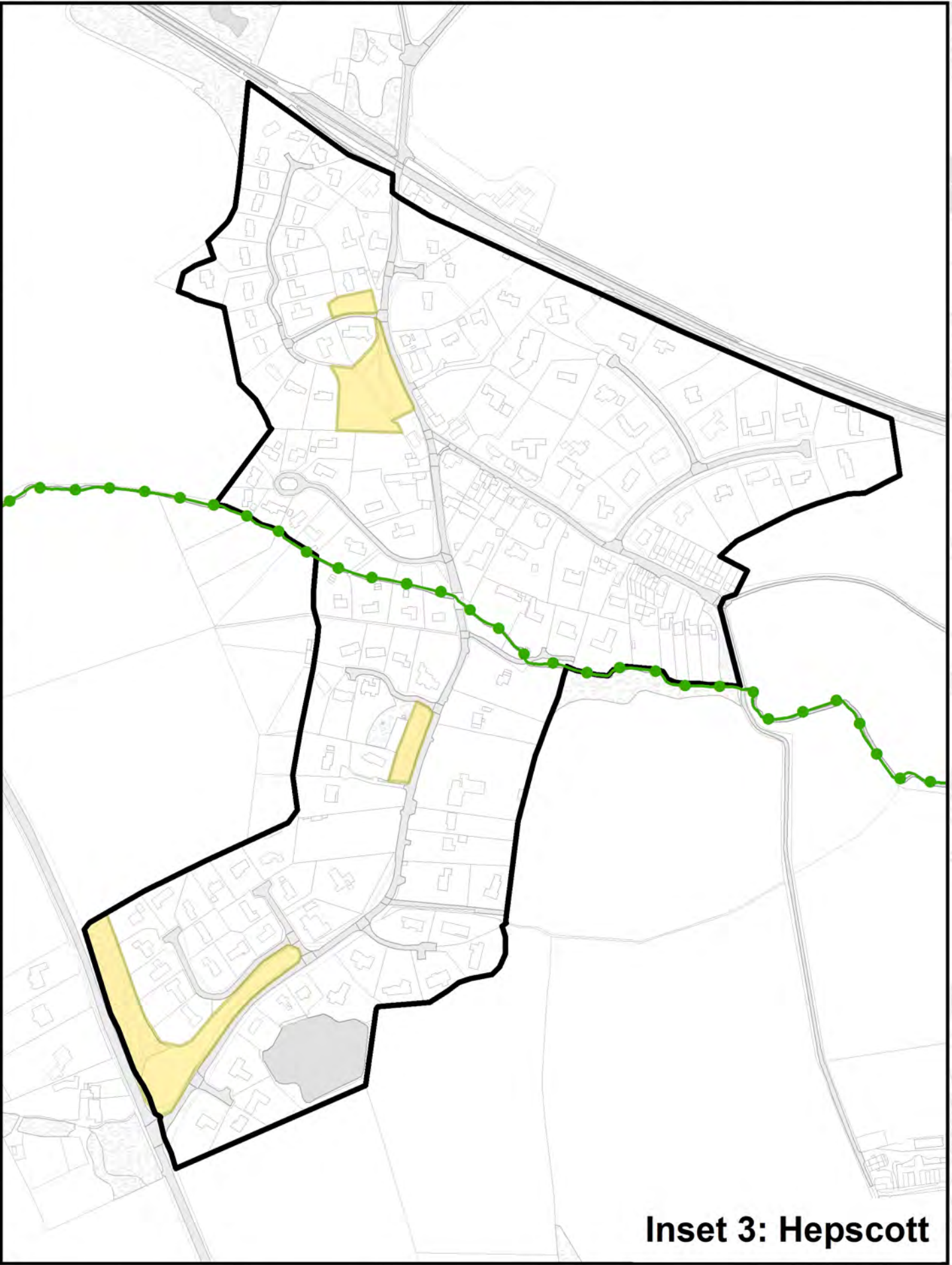
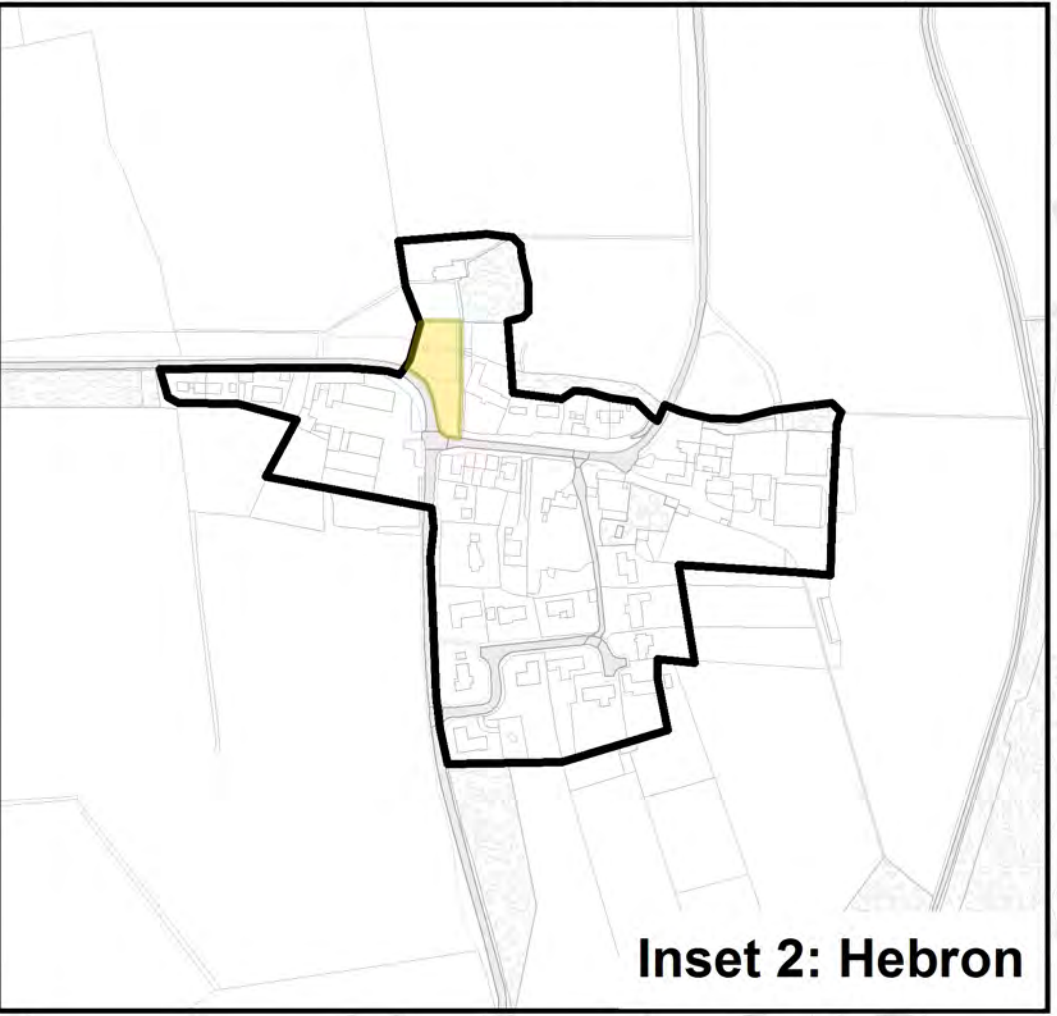
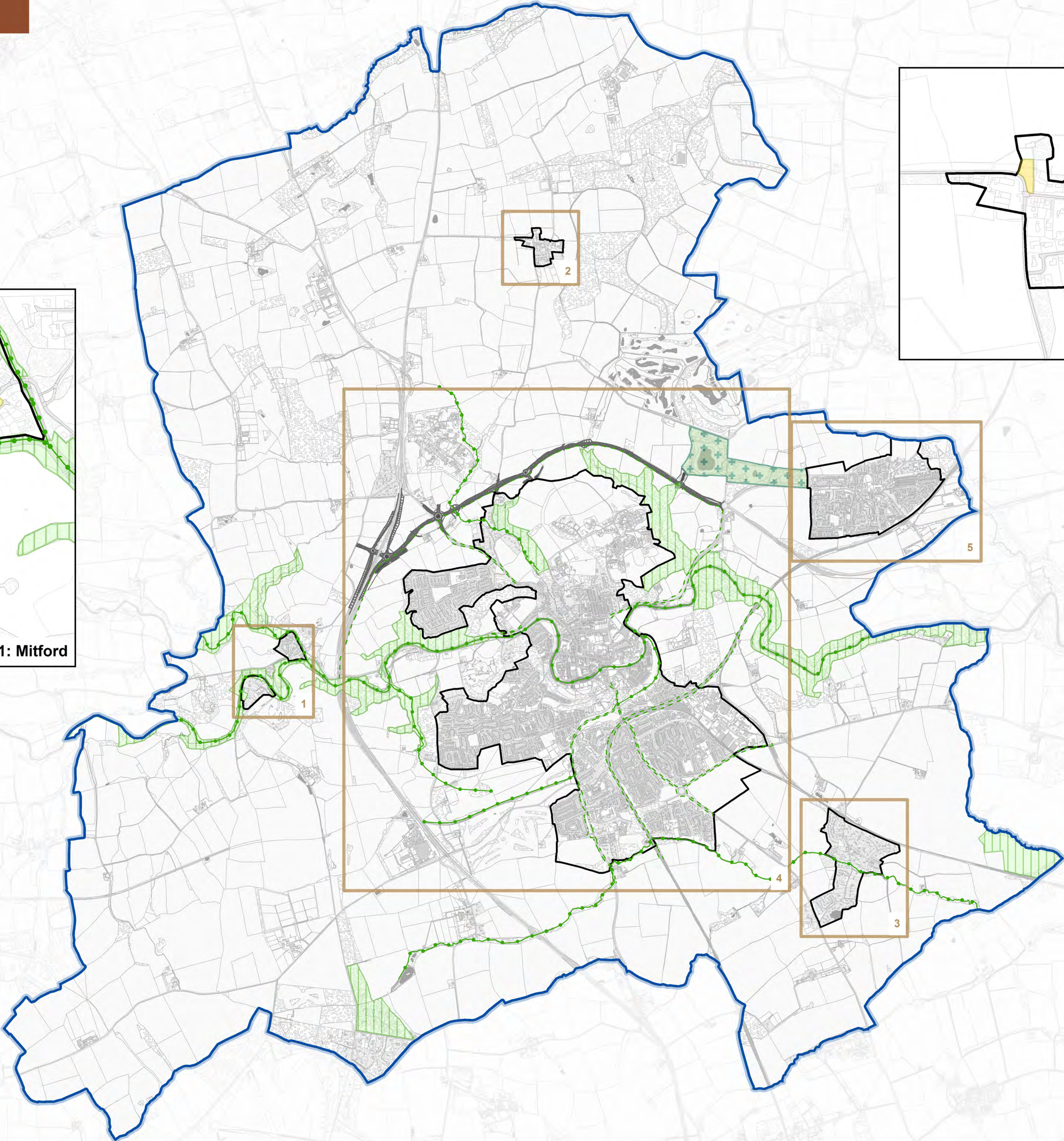
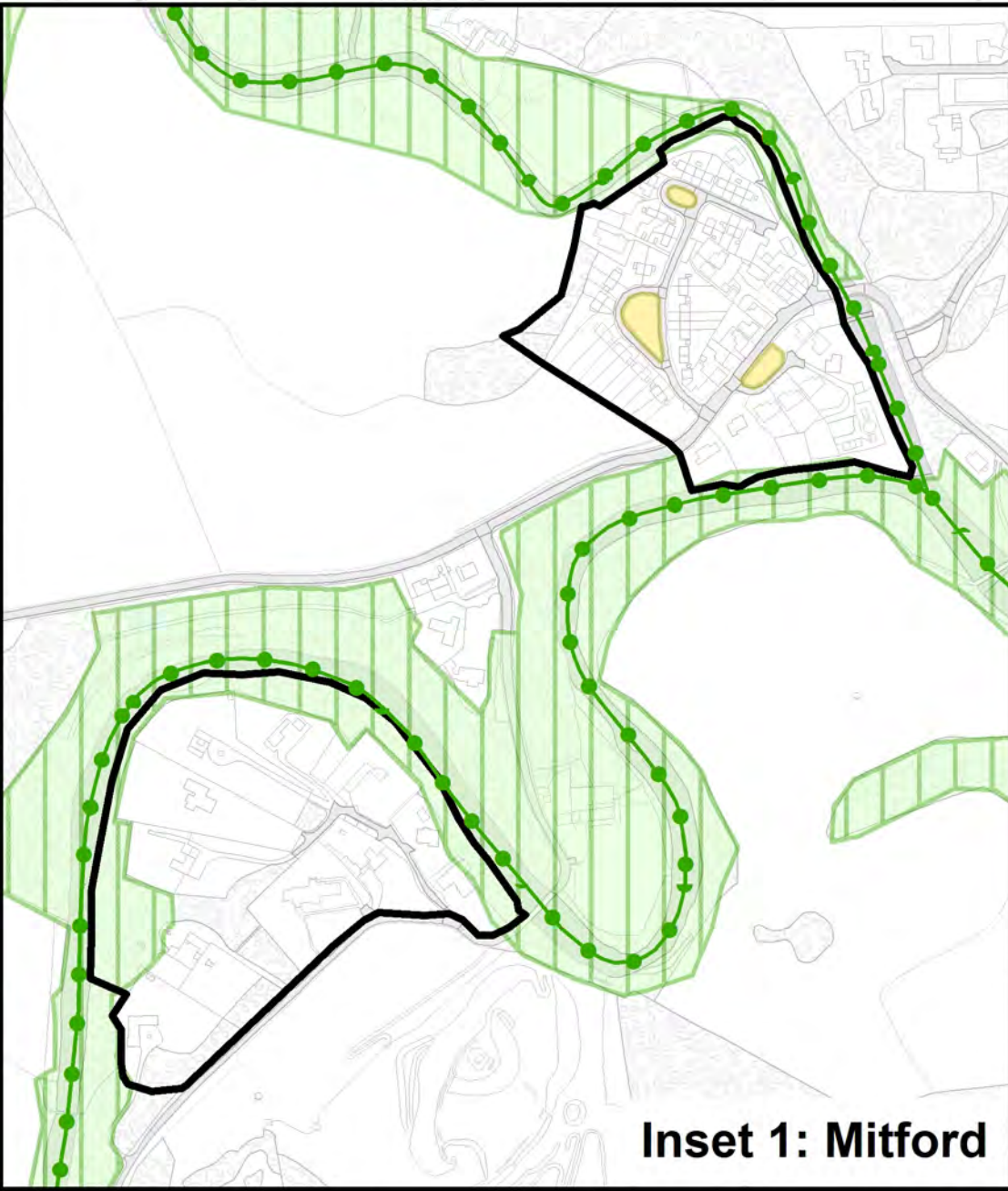


Proposals Map May 2016



**Proposals Key**

- Inset
- Neighbourhood Plan Boundary
- Settlement Boundary
- Proposed Road
- Committed Developments
- Allocated Housing Sites
- Allocated Employment Sites
- Town Centre Boundary
- Primary Shopping Area
- Primary Shopping Frontage
- Pegswood Heart of the Village Development Area
- Key Opportunity Sites
- Rail Station Car Park
- Conservation Area
- Pegswood Community Park
- Local Green Space
- Protected Open Space
- Local Wildlife and Geological Sites
- Landscape Corridor
- Wildlife Corridor

**Map Information and Scales:**

Main Map: 1:20,000  
Insets 1, 2, 3, 5: 1:5,000  
Inset 4: 1:10,000  
Inset 4b: 1:2,500

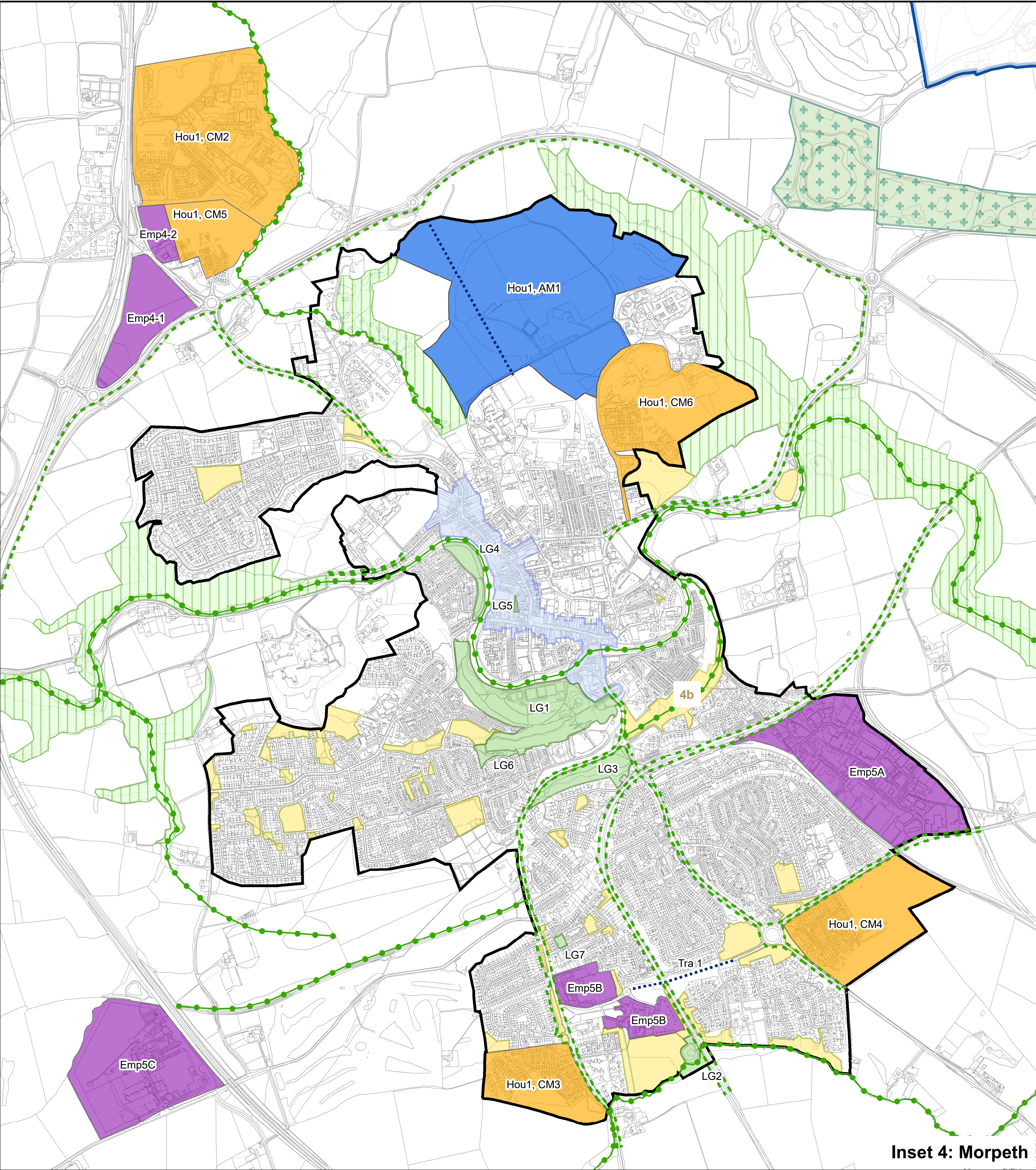
N



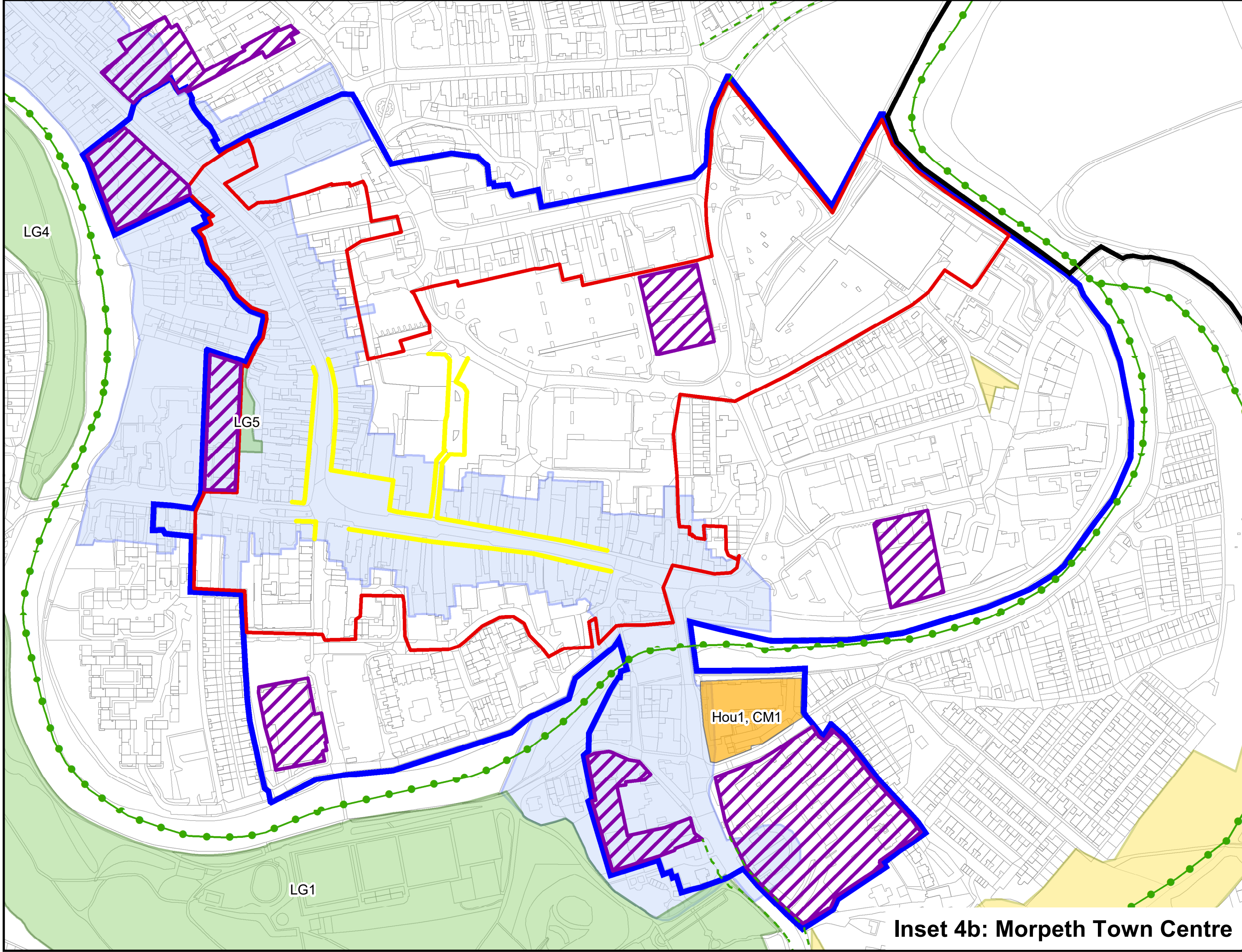
Proposals Map May 2016

Map Information and Scales:
Main Map: 1:20,000
Insets 1, 2, 3, 5: 1:5,000
Inset 4: 1:10,000
Inset 4b: 1:2,500

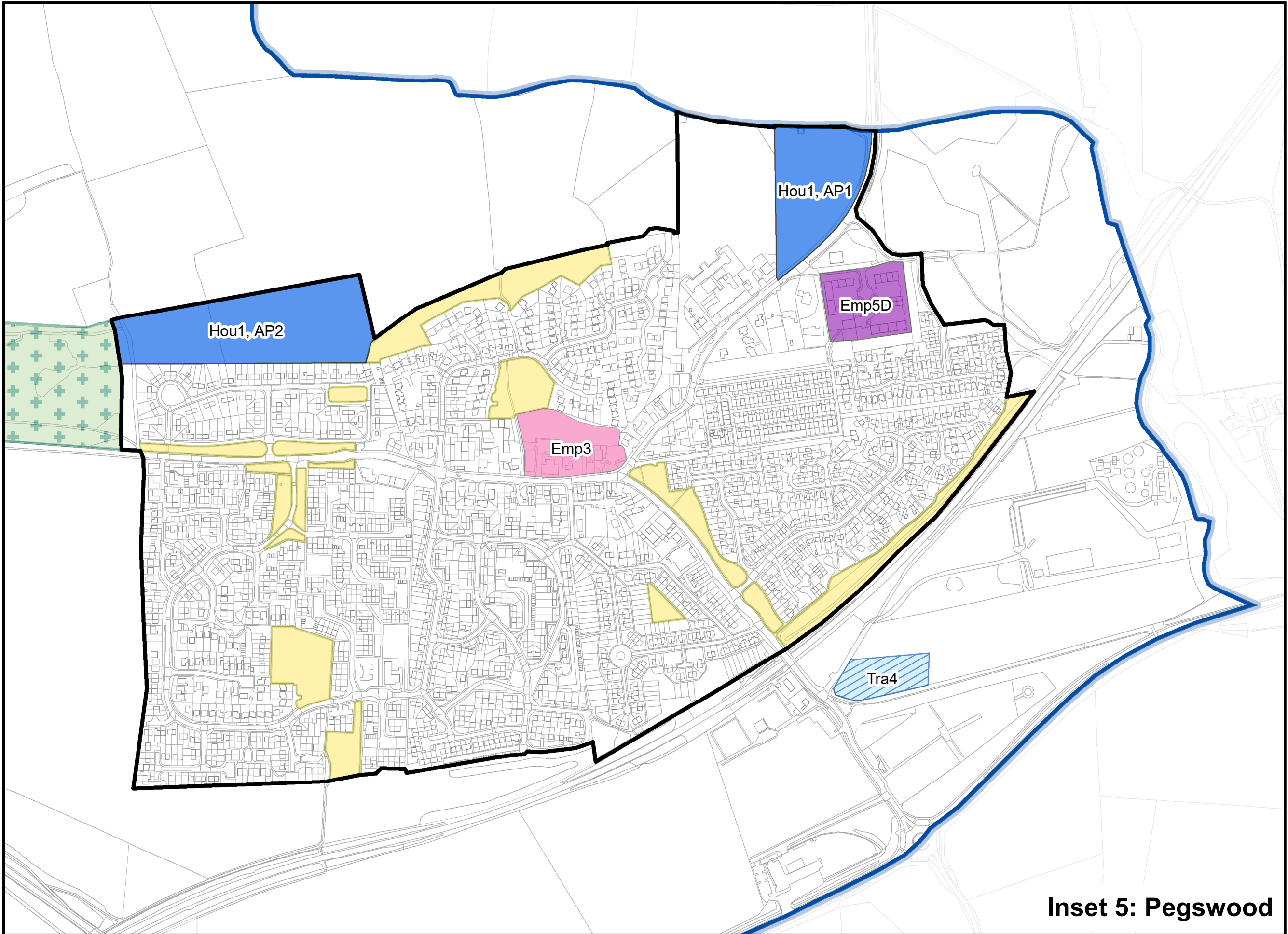
Proposals Key					
	Inset		Town Centre Boundary		Pegswood Community Park
	Neighbourhood Plan Boundary		Primary Shopping Area		Local Green Space
	Settlement Boundary		Primary Shopping Frontage		Protected Open Space
	Proposed Road		Pegswood Heart of the Village Development Area		Local Wildlife and Geological Sites
	Committed Developments		Key Opportunity Sites		Landscape Corridor
	Allocated Housing Sites		Rail Station Car Park		Wildlife Corridor
	Allocated Employment Sites		Conservation Area		



Inset 4: Morpeth



Inset 4b: Morpeth Town Centre



Inset 5: Pegswood