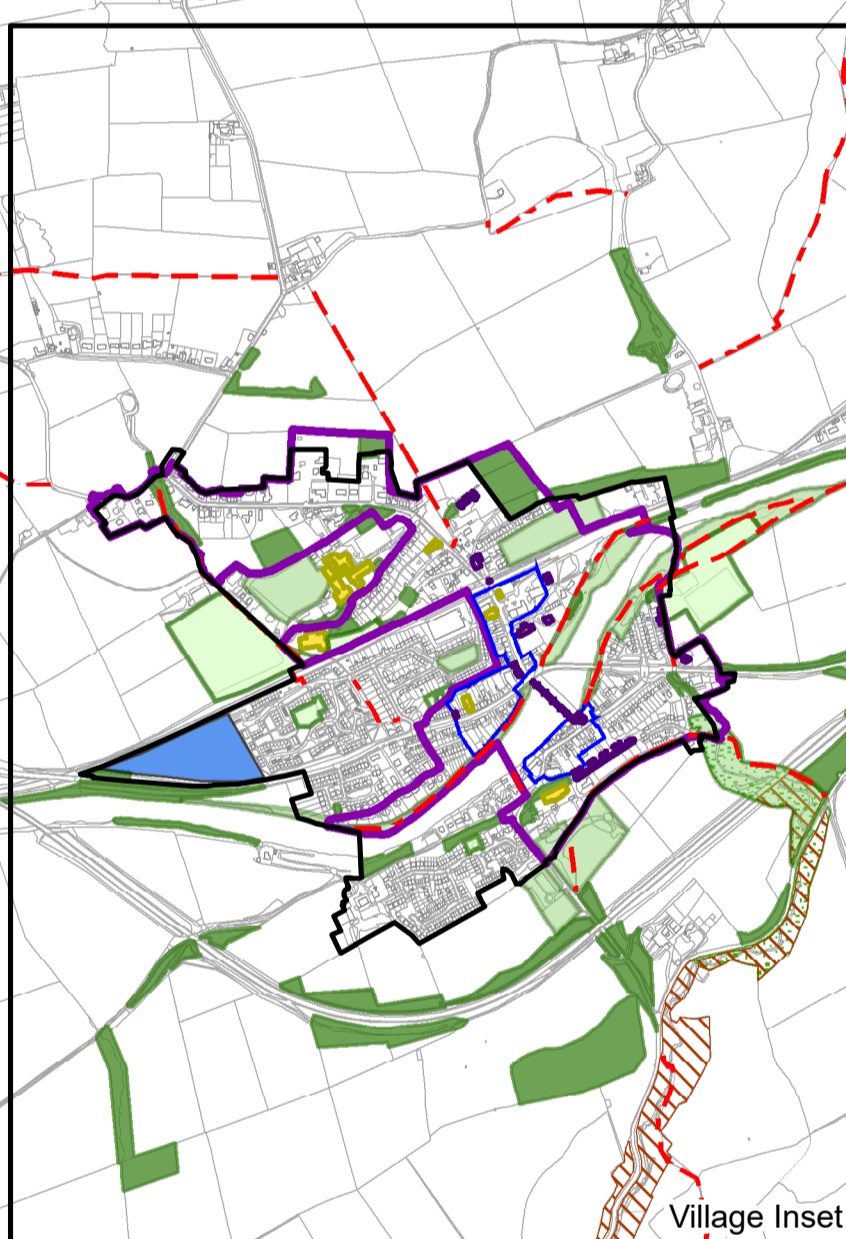
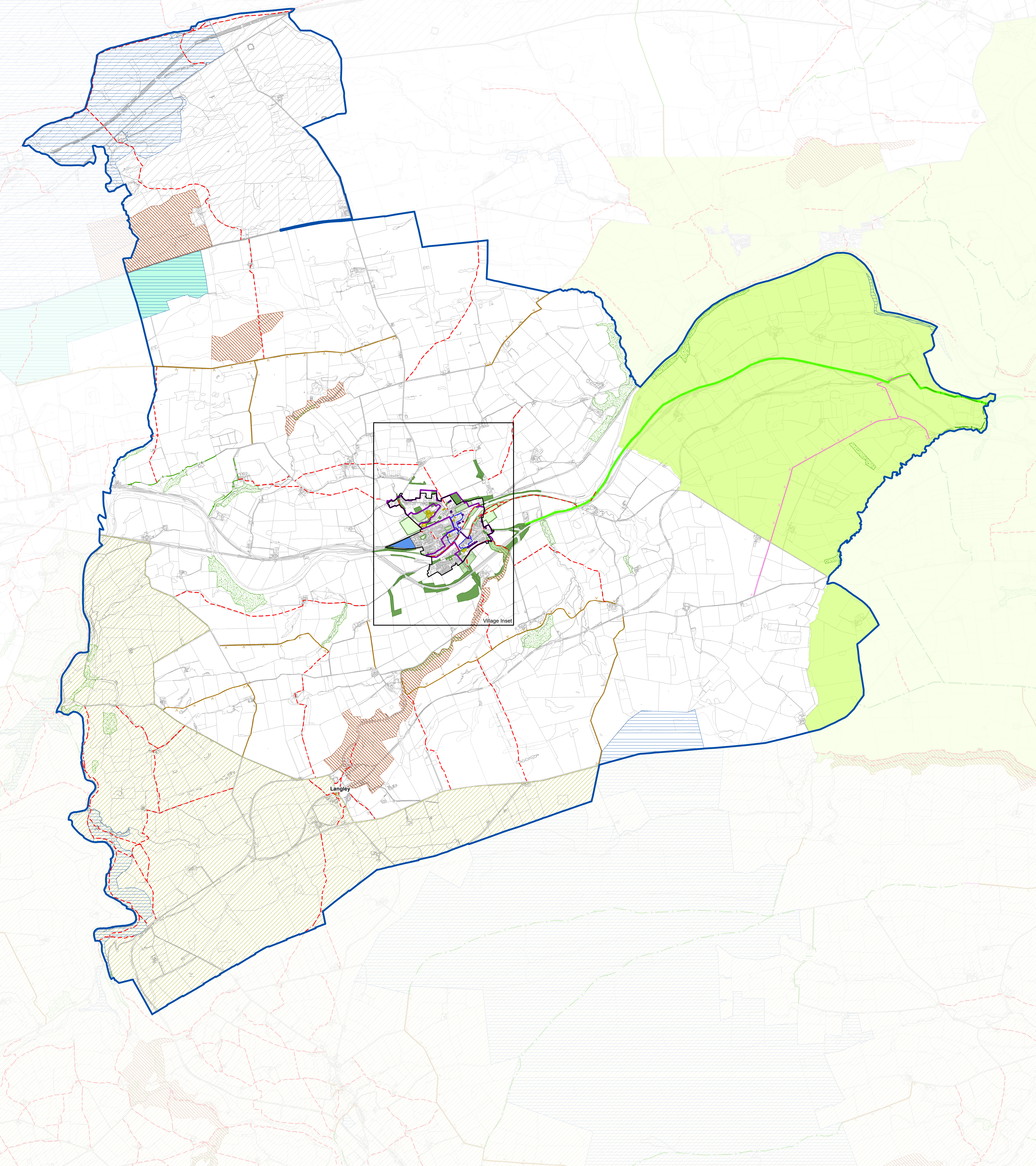


- | | | | |
|--|---|--|--|
| | Haydon Neighbourhood Area | | Policy H20: Public Rights of Way |
| | Policy H2: Settlement Boundary | | Footpath |
| | Policy H2: Green Belt | | Bridleway |
| | Policy H7: Haydon Bridge Conservation Area | | Restricted Byway |
| | Policy H7: Conservation Area Assets | | Byway |
| | Policy H9: Sites of Special Scientific Interest | | Policy H21: Potential indicative route to Hexham |
| | Policy H9: Local Wildlife and Geological Sites | | Northumberland National Park |
| | Policy H9: National Nature Reserves | | AONB |
| | Policy H9: Ancient Woodland | | |
| | Policy H10: Other Green Infrastructure | | |
| | Policy H11: Local Green Space | | |
| | Policy H12: Protected Open Space | | |
| | Policy H14: Land west of Langley Gardens | | |
| | Policy H15: Community Facilities | | |
| | Policy H16: Haydon Bridge Village Centre | | |



Langley