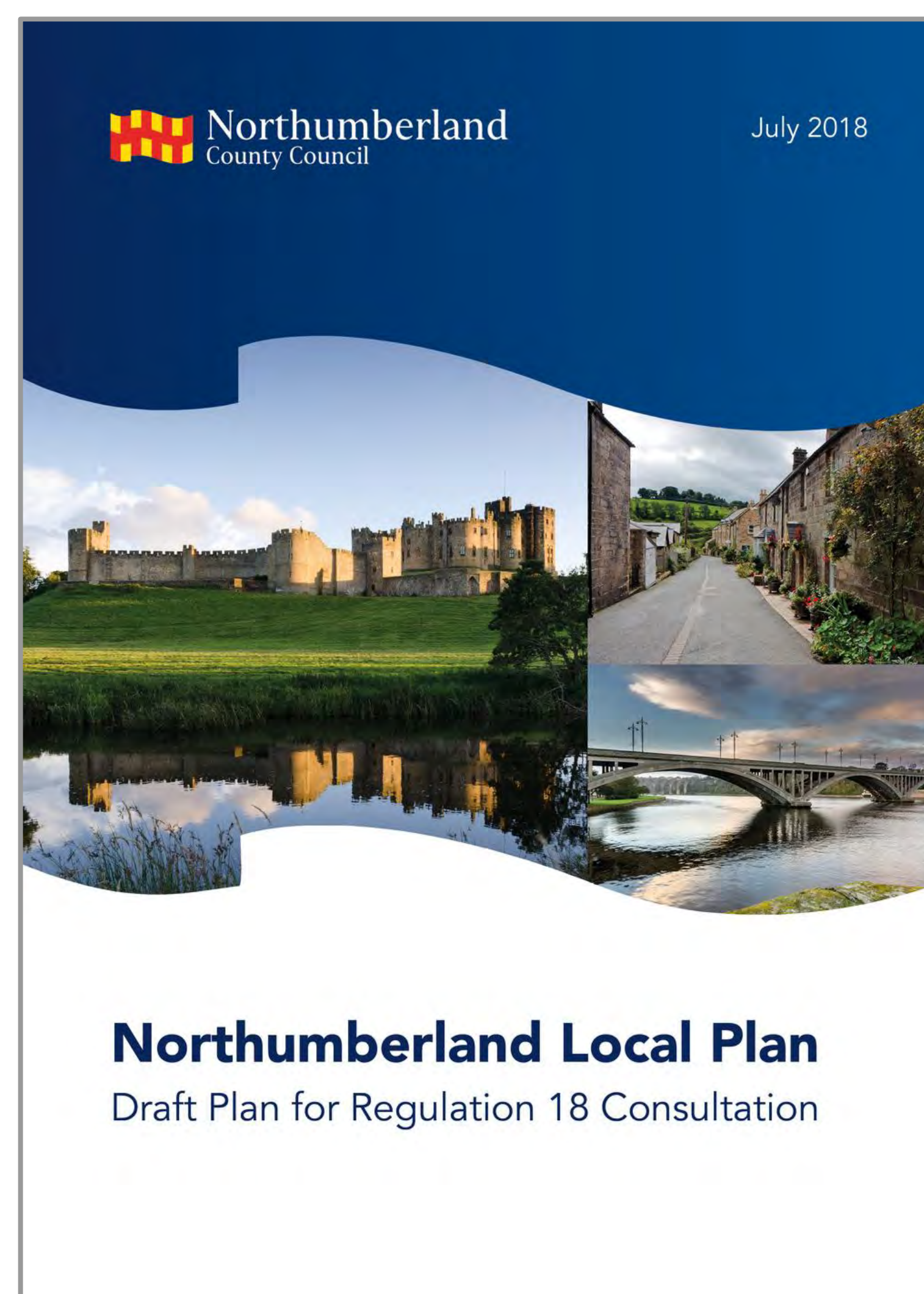




Welcome.

We are currently consulting on a draft of a planning policy document known as the 'Northumberland Local Plan'.



The purpose of this drop-in session is to provide an introduction to the contents of the consultation document and provide advice on how you can respond to the consultation.

Staff involved in writing the Local Plan are in attendance if you have any queries.



SCAN ME
TO FIND
OUT MORE



NORTHUMBERLAND LOCAL PLAN

DRAFT PLAN FOR REGULATION 18 CONSULTATION

What will the Local Plan do?

We have a duty to plan for new homes, workplaces, services and facilities, whilst protecting the natural, built and historic environment.

The new Local Plan will guide future development and planning decisions in Northumberland up to 2036.

NORTHUMBERLAND LOCAL PLAN

1

Provide strategic policies taking account of key factors like population trends, economic growth, climate change, resources and environmental character.

2

Set out the scale and distribution of new development (including the number of new homes) that is required to 2036.

3

Provide planning policies and principles to guide decisions on planning applications.

4

Show environmental designations and site specific proposals for the conservation and enhancement of historic and natural assets.

5

Allocate areas of land for new housing and employment development.





NORTHUMBERLAND LOCAL PLAN

DRAFT PLAN FOR REGULATION 18 CONSULTATION

The Vision

The vision sets out what the Local Plan seeks to achieve and informs all the policies and proposals in the Plan:

Northumberland's physical and cultural identity will be conserved and nurtured; its resources will be utilised in a sustainable way. The breadth, scale and quality of its special, varied landscapes and biodiversity will be conserved, enhanced and increased. The quality of its buildings and spaces will be conserved and improved. New development will be well designed, minimise environmental harm and reduce the effects of climate change.

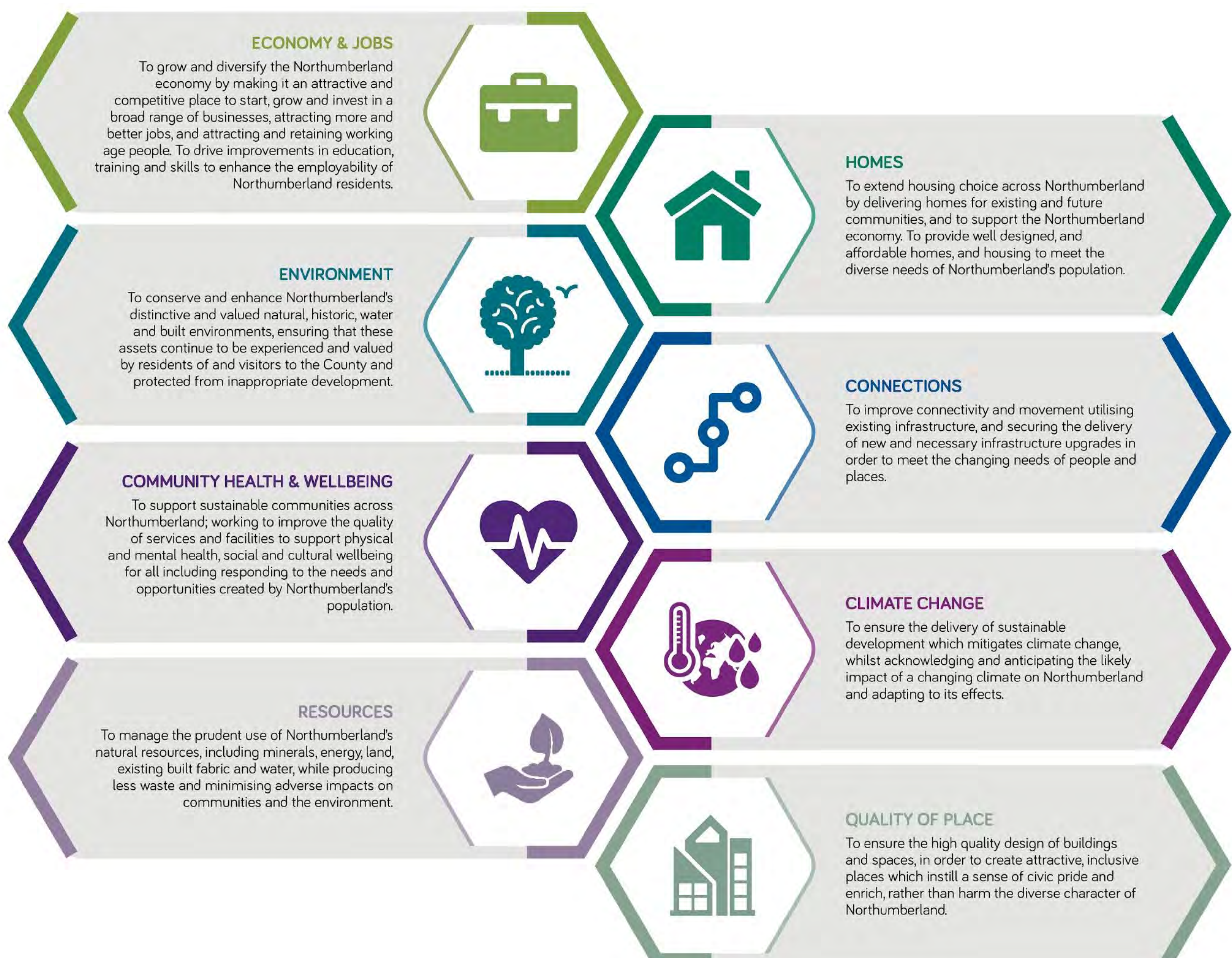
The economy will be thriving and competitive, and deliver more and better jobs. Supported by investment and infrastructure, building on existing strengths whilst diversifying and realising the potential of the rural and visitor economy.

The health and wellbeing of the county's people and communities will be safeguarded by continually improving education and skills, and ensuring access to decent, affordable homes, services and facilities is secured.

VISION

The Objectives

The strategic objectives below have been developed to deliver the vision.

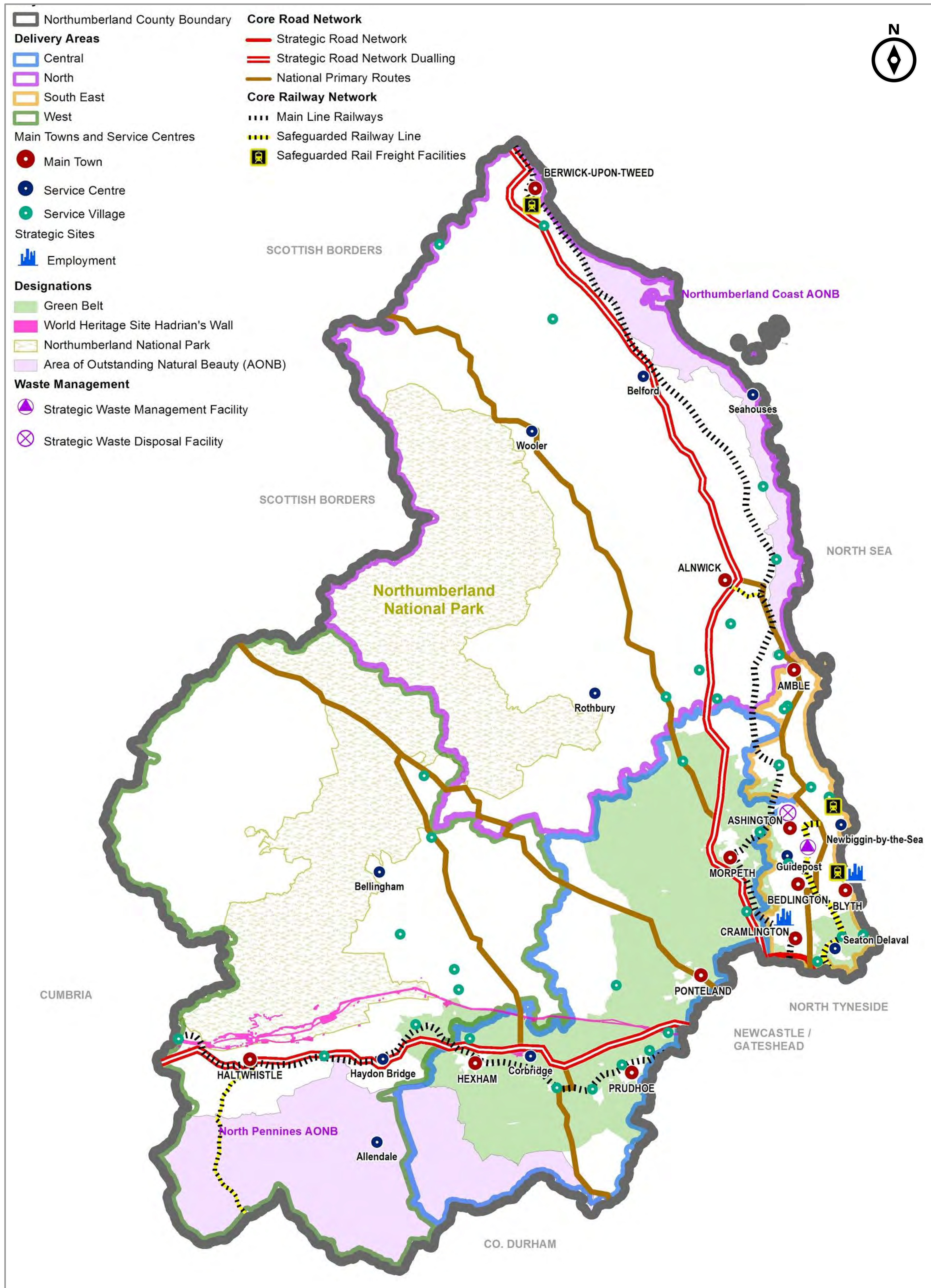




NORTHUMBERLAND LOCAL PLAN

DRAFT PLAN FOR REGULATION 18 CONSULTATION

The Key Diagram





NORTHUMBERLAND LOCAL PLAN

DRAFT PLAN FOR REGULATION 18 CONSULTATION

How will the objectives be met?

To deliver the vision and the objectives, the policies and proposals in the Local Plan seek to:

ECONOMY & JOBS



- Support for 15,000 new jobs
- Provide a portfolio of high quality employment sites, including:
 - Allocating land currently in the Green Belt for employment uses at Hexham, Ponteland and Prudhoe.
 - Support for Enterprise Zone sites at Ashington, Berwick and Morpeth
- Support growth of the rural economy by supporting hubs for businesses in market towns, rural service centres and larger villages as well as home run enterprises and farm diversification
- Support the growth and diversification of the visitor economy
- Support improvements to town centres and support their roles as service centres

ENVIRONMENT



- Conserve and enhance Northumberland's natural, built and historic environment, including the AONBs and Hadrian's Wall World Heritage Site.
- Direct development to less sensitive locations

COMMUNITY HEALTH & WELLBEING



- Protect and enhance accessible local service provision
- Ensure growth is matched by delivery of new and improved infrastructure
- Support new and improved community infrastructure

RESOURCES



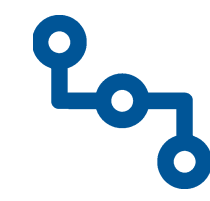
- Support the efficient use of land by giving priority to previously developed land
- Ensuring a steady and adequate supply of aggregate minerals by allocating new sites for sand and gravel and rock extraction
- Ensure the extraction of a range of mineral resources does not have unacceptable adverse effects on local communities and the environment
- Safeguarding of mineral resources to ensure that they are not needlessly sterilised
- Support new and enhanced waste management facilities to provide a network of facilities that maximise recycling and recovery

HOMES



- 17,700 new homes over period between 2016 and 2036 (885 dwellings per year)
- Homes built since 2016, new homes with planning permission or minded to approve exceed the above number
- Allocations proposed to encourage delivery in particular locations
- No Green Belt deletion for housing proposed
- Restriction on new build second and holiday homes
- 20% affordable housing requirement
- Accessibility and adaptability standards introduced

CONNECTIONS



- Give priority to walking, cycling and public transport
- Support for reintroduction of passenger services on the Northumberland Line (Ashington, Blyth and Tyne line) and improvements to the facilities along the Tyne Valley Line and East Coast Main Line
- Support improvements to the road network, including improvements at key junctions and dualling of the A1 and A69
- Support for the development of ports at Amble, Berwick and Blyth and expansion of Newcastle Airport
- Support the rollout of superfast broadband and improvements to mobile communications

CLIMATE CHANGE



- Focusing development in locations that reduces the need to travel
- Supporting for development of decentralised, renewable and low carbon energy
- Encouraging sustainable construction practices and building design
- Reducing flood risk through effective risk assessment of new developments

QUALITY OF PLACE



- Ensure the design of new development is of a high quality
- Maintain and enhance the individual character of places
- Provide attractive living and working environments
- Improve the accessibility to services for communities



NORTHUMBERLAND LOCAL PLAN

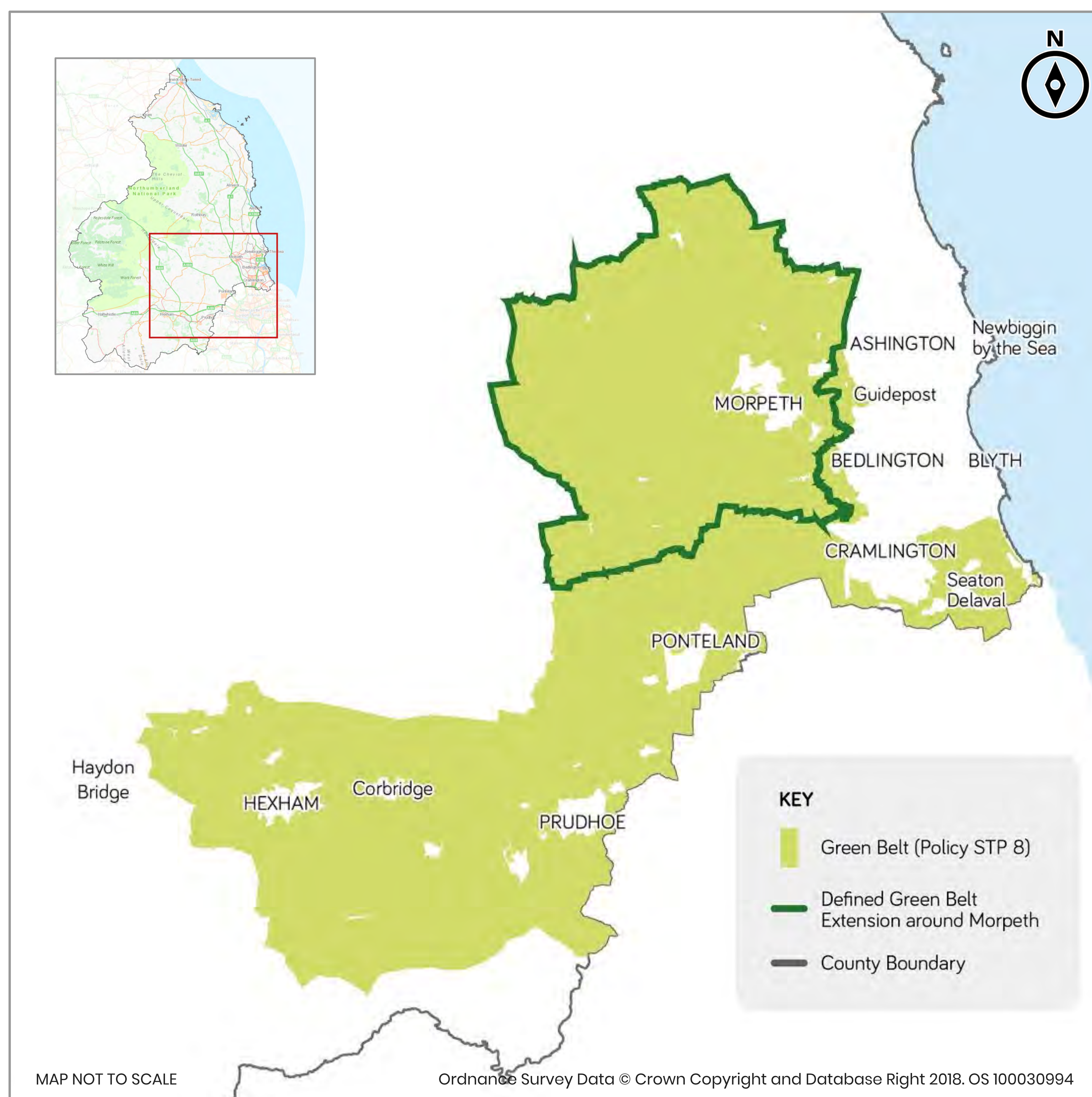
DRAFT PLAN FOR REGULATION 18 CONSULTATION

Purpose of the Green Belt

The main function of the Green Belt in Northumberland is to prevent the unrestricted sprawl of the Tyne and Wear conurbation by keeping land permanently open.

The protection of the Green Belt is a key element of the development strategy.

Changes to the Green Belt



GREEN BELT EXTENSION AROUND MORPETH

Detailed boundaries for the Green Belt extension around Morpeth, have been defined, including insets for the following:

- Belsay
- Hartburn
- Hebron
- Hepscott
- Longhirst
- Longhorsley
- Mitford
- Morpeth
- Ogle
- Netherwitton
- Pegswood
- Stannington
- Stannington Station
- Ulgham
- Whalton

LAND RELEASED FOR EMPLOYMENT PURPOSES

It is proposed to release current Green Belt land for employment uses at:

- Hexham (Land east of the Egger factory)
- Ponteland (Land at Prestwick Park and Prestwick Pit)
- Prudhoe (Land at Eltringham)

SETTLEMENTS INSET FROM THE EXISTING DEFINED GREEN BELT

The following settlements, previously washed over, have been inset from the Green Belt:

- Broomhaugh
- Fourstones
- Mickley Square
- Newbrough
- Wall
- Whittonstall



NORTHUMBERLAND LOCAL PLAN

DRAFT PLAN FOR REGULATION 18 CONSULTATION

Timetable and Key Milestones

JUL 2017

Commencement of work to develop and update the evidence base

FEB 2018

'Call for Sites' consultation

APR 2018

Consultation to capture high-level views on strategic locations for development

JUL 2018

Consultation on the Draft Local Plan
(4 July 2018 to 15 August 2018)

WE ARE
HERE

JAN 2019

Consultation on the Publication Draft Local Plan

MAY 2019

Submission of the Local Plan to the Government for examination by an independent inspector

SEP 2019

Examination hearings involving round table discussions led by the Inspector

MAR 2020

Adoption





NORTHUMBERLAND LOCAL PLAN

DRAFT PLAN FOR REGULATION 18 CONSULTATION

What are the next steps?



Comments received in response to this consultation will be used along with any updated evidence base, to inform the **Publication Draft of the Local Plan**.



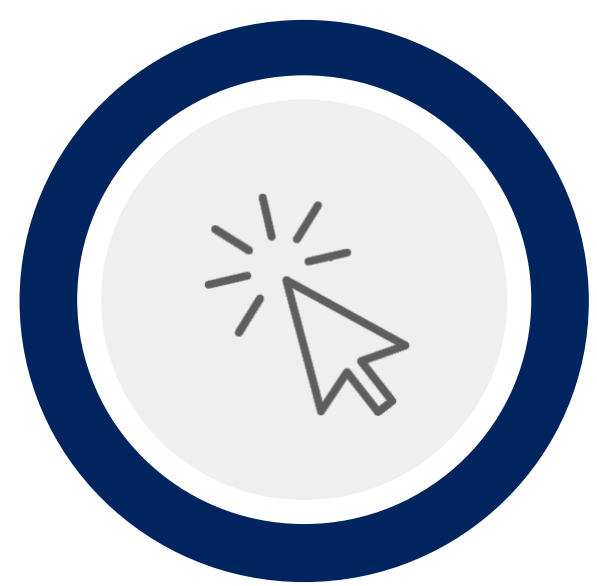
The **Publication Draft of the Local Plan** will be subject to public consultation in January 2019.



The Local Plan will then be submitted for independent examination in May 2019.

How can I comment on this consultation?

Comments need to be made in writing to us and received no later than **5pm on 15 August 2018** via the following methods:



Online via the Consultation Portal at www.northumberland.gov.uk/localplan



SCAN ME
TO ACCESS



Returning a comment form by either Email or Post

Why should I take part in this consultation?

The Plan affects everyone who lives and works in the County

We want to gather your views to ensure the policies will be effective and reflect local needs and aspirations

You have the most influence in shaping the plan at this early stage of consultation

The Plan sets out the strategy for future building and environmental matters within the County