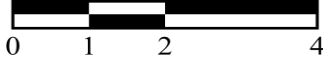
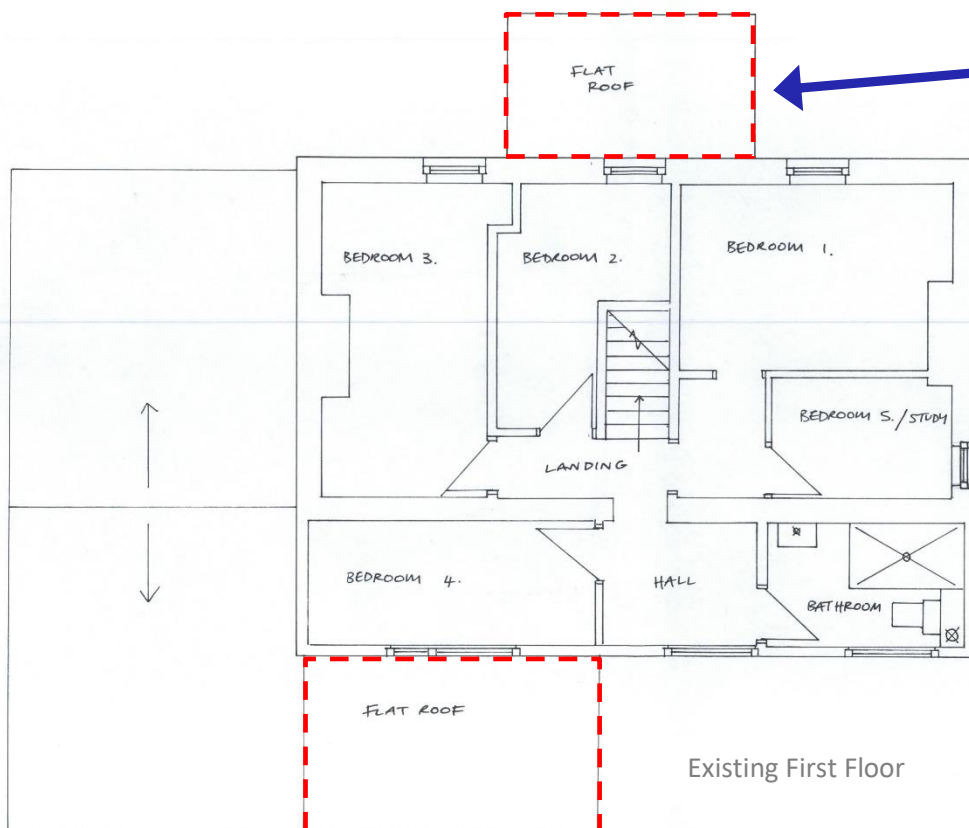
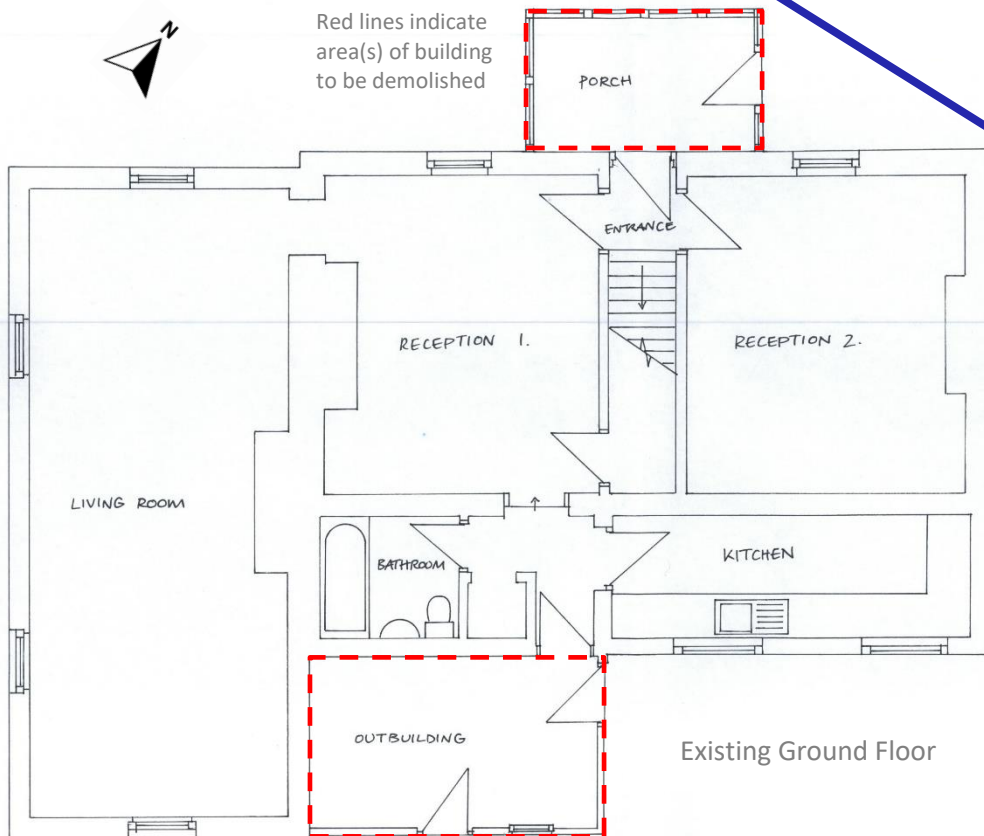


Existing Floor Plans - Drawing No: 003 Revision A

1:100 Scale at A4



An example of valid existing floor plans.



- ✓ Drawn to the correct scale 1:50 or 1:100.
- ✓ Scale bar included that matches this scale.
- ✓ The direction of North is helpful but not mandatory.
- ✓ All floors that will change are included.
- ✓ All window and door openings are shown (and you have checked the positions/sizes match the elevations).
- ✓ It is clear from the drawing title whether drawings are existing or proposed floor plans.
- ✓ Drawings clearly indicate where existing buildings or walls are to be demolished.
- ✓ Plans have been submitted at the paper size stated, are not shrunk/enlarged and are not a photograph of a plan (these will not measure to scale).
- ✓ It is helpful to state the paper size and a drawing number (with revision).