

This fact sheet relates to people living within a 10, 20 and 30 minute drive time of Alnwick.

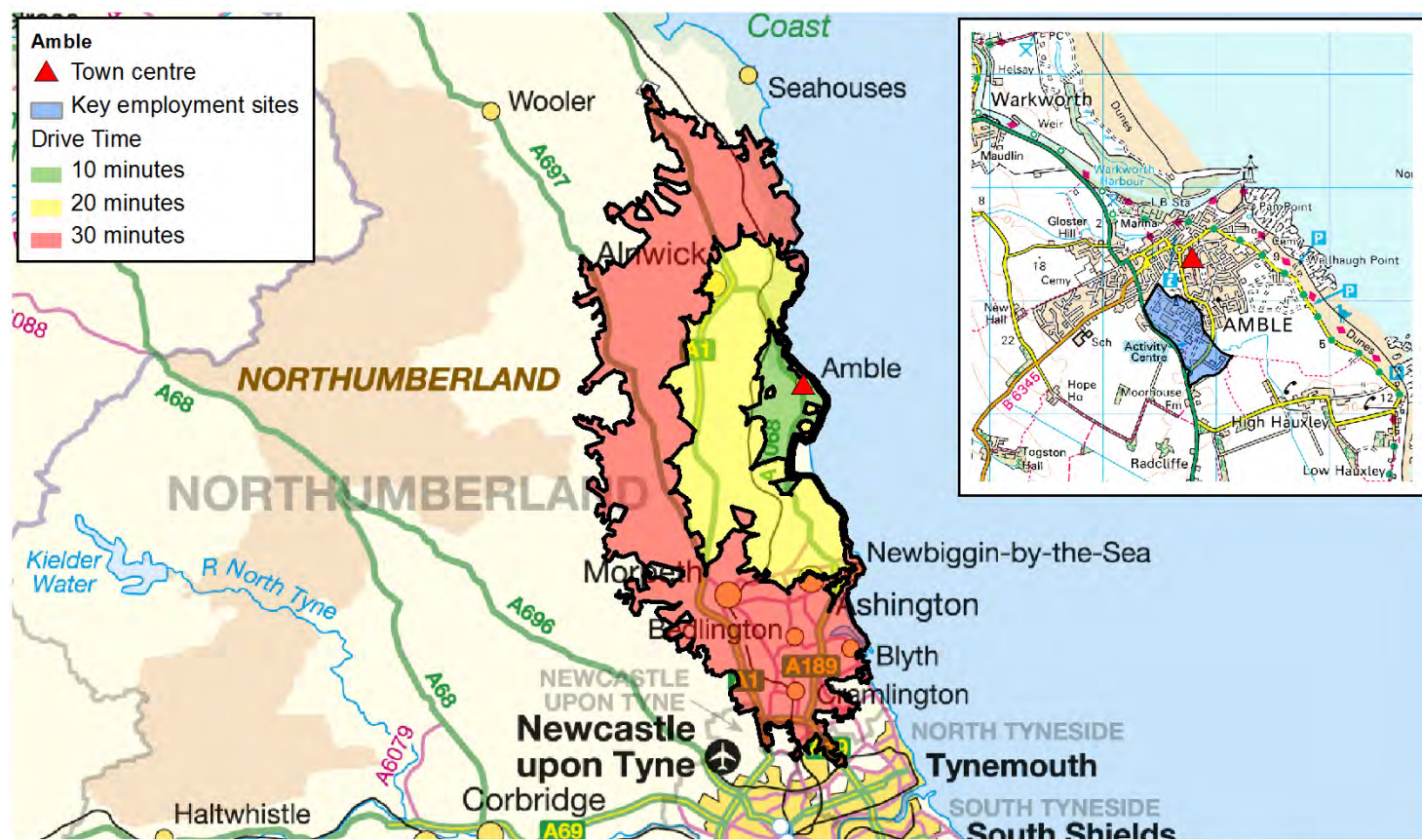


Published September 2013. Scale: 1:800,000 © Crown Copyright. All rights reserved. Northumberland County Council - OS Licence No. 100049048. Road network and journey time data provided by the Department for Transport and Trafficmaster.

WHO WE ARE	10 Minutes		20 Minutes		30 Minutes	
Key Population Statistics (all usual residents)	Number	Per cent	Number	Per cent	Number	Per cent
All People	14,236	-	38,810	-	92,907	-
Males	6,906	48.5	19,413	50.0	45,615	49.1
Females	7,330	51.5	19,397	50.0	47,292	50.9
16 – 64 years	8,807	61.9	24,414	62.9	57,394	61.8
16 – 24	1,351	9.5	3,587	9.2	8,263	8.9
25 - 44	3,295	23.1	8,679	22.4	20,233	21.8
45 – 64	4,161	29.2	12,148	31.3	28,898	31.1
65 -74 years	1,540	10.8	4,518	11.6	10,872	11.7
Number of people per hectare	0.8	-	0.5	-	0.6	-
HOW WE LIVE	10 Minutes		20 Minutes		30 Minutes	
Households (all household spaces)	Number	Per cent	Number	Per cent	Number	Per cent
All Households	6,155	90.4	16,735	89.2	41,119	90.6
Average Household size	2.2	-	2.2	-	2.2	-
Household by Tenure (all households)	Number	Per cent	Number	Per cent	Number	Per cent
Owned outright	1,923	31.2	5,826	34.8	14,858	36.1
Owned with a mortgage or loan/shared ownership	1,695	27.5	4,905	29.3	12,836	31.2
Social rented	1,276	20.7	2,985	17.8	6,888	16.8
Private rented including living rent free	1,261	20.5	3,019	18.0	6,537	15.9
Car or Van Availability (all households)	Number	Per cent	Number	Per cent	Number	Per cent
No cars or vans in household	1,266	20.6	3,096	18.5	8,133	19.8
1 car or van in household	2,800	45.5	7,375	44.1	18,295	44.5
2 or more cars or vans in household	2,089	33.9	6,264	37.4	14,691	35.7
Average number of cars or vans per household	1.2	-	1.3	-	1.3	-

WHAT WE DO	10 Minutes		20 Minutes		30 Minutes	
	Number	Per cent	Number	Per cent	Number	Per cent
Economic activity (aged 16-74)						
Economically active	7,260	70.2	19,266	66.6	45,557	66.7
Full-time employee	3,888	37.6	9,817	33.9	24,273	35.6
Part-time employee	1,625	15.7	4,309	14.9	9,941	14.6
Self-employed	1,099	10.6	3,336	11.5	7,150	10.5
Unemployed	421	4.1	1,243	4.3	2,825	4.1
Full-time student	227	2.2	561	1.9	1,368	2.0
Economically inactive	3,087	29.8	9,666	33.4	22,709	33.3
Industry (aged 16-74 in employment)	Number	Per cent	Number	Per cent	Number	Per cent
Agriculture, forestry & fishing	180	2.6	739	4.1	1,393	3.3
Mining & quarrying	36	0.5	150	0.8	314	0.7
Manufacturing	313	4.6	1,043	5.8	3,013	7.1
Elec, gas, steam & air conditioning supply; Water supply; sewerage	61	0.9	175	1.0	469	1.1
Construction	540	7.9	1,560	8.7	3,414	8.0
Wholesale & retail trade; repair motor vehicles...	930	13.7	2,371	13.2	5,664	13.3
Transport & Storage	208	3.1	602	3.4	1,521	3.6
Accommodation & Food Svc Activities	541	8.0	1,362	7.6	2,904	6.8
Information & Communication	133	2.0	332	1.9	916	2.2
Financial & Insurance Activities	90	1.3	283	1.6	862	2.0
Real Estate; Professional, Scientific & Technical; Admin. & Support Svc.	764	11.2	1,936	10.8	4,519	10.6
Pub Admin & Defence; Compulsory Social Security	1,112	16.4	2,340	13.0	4,744	11.2
Education	621	9.1	1,634	9.1	3,968	9.3
Human Health & Social Work	878	12.9	2,483	13.8	6,661	15.7
Other	387	5.7	925	5.2	2,116	5.0
Occupation (aged 16-74 in employment)	Number	Per cent	Number	Per cent	Number	Per cent
Managers, Directors and Senior Officials	831	12.2	2,145	12.0	4,861	11.4
Professional Occupations	1,034	15.2	2,872	16.0	7,337	17.3
Associate Professional and Technical Occupations	955	14.1	2,249	12.5	5,126	12.1
Administrative and Secretarial Occupations	661	9.7	1,708	9.5	4,582	10.8
Skilled Trades Occupations	874	12.9	2,629	14.7	5,703	13.4
Caring, Leisure and Other Service Occupations	720	10.6	1,809	10.1	4,406	10.4
Sales and Customer Service Occupations	517	7.6	1,201	6.7	3,018	7.1
Process, Plant and Machine Operatives	380	5.6	1,129	6.3	2,756	6.5
Elementary Occupations	822	12.1	2,193	12.2	4,689	11.0
Socio-Economic Classification (aged 16-74 in employment)	Number	Per cent	Number	Per cent	Number	Per cent
Higher Managerial, Admin & Prof Occupations	1,065	10.3	2,852	9.9	6,837	10.0
Lower Managerial, Admin & Prof Occupations	2,373	22.9	6,316	21.8	15,629	22.9
Intermediate Occupations	1,273	12.3	3,367	11.6	8,651	12.7
Small Employers & Own Account Workers	1,151	11.1	3,567	12.3	7,462	10.9
Lower Supervisory & Technical Occupations	817	7.9	2,277	7.9	5,303	7.8
Semi-Routine Occupations	1,592	15.4	4,357	15.1	10,037	14.7
Routine Occupations	1,171	11.3	3,492	12.1	7,883	11.5
Never Worked and Long-Term Unemployed	371	3.6	1,294	4.5	2,966	4.3
Not Classified	534	5.2	1,410	4.9	3,498	5.1
Highest Level of Qualification (aged 16+)	Number	Per cent	Number	Per cent	Number	Per cent
No qualifications	2,538	21.6	7,486	22.9	18,059	23.1
Level 1 qualifications	1,458	12.4	4,181	12.8	9,769	12.5
Level 2 qualifications	2,018	17.2	5,434	16.6	12,528	16.0
Apprenticeship	457	3.9	1,403	4.3	3,400	4.4
Level 3 qualifications	1,484	12.6	3,825	11.7	9,131	11.7
Level 4 qualifications and above	3,377	28.7	9,149	28.0	22,135	28.3
Other qualifications	428	3.6	1,226	3.7	3,082	3.9

This fact sheet relates to people living within a 10, 20 and 30 minute drive time of Amble.

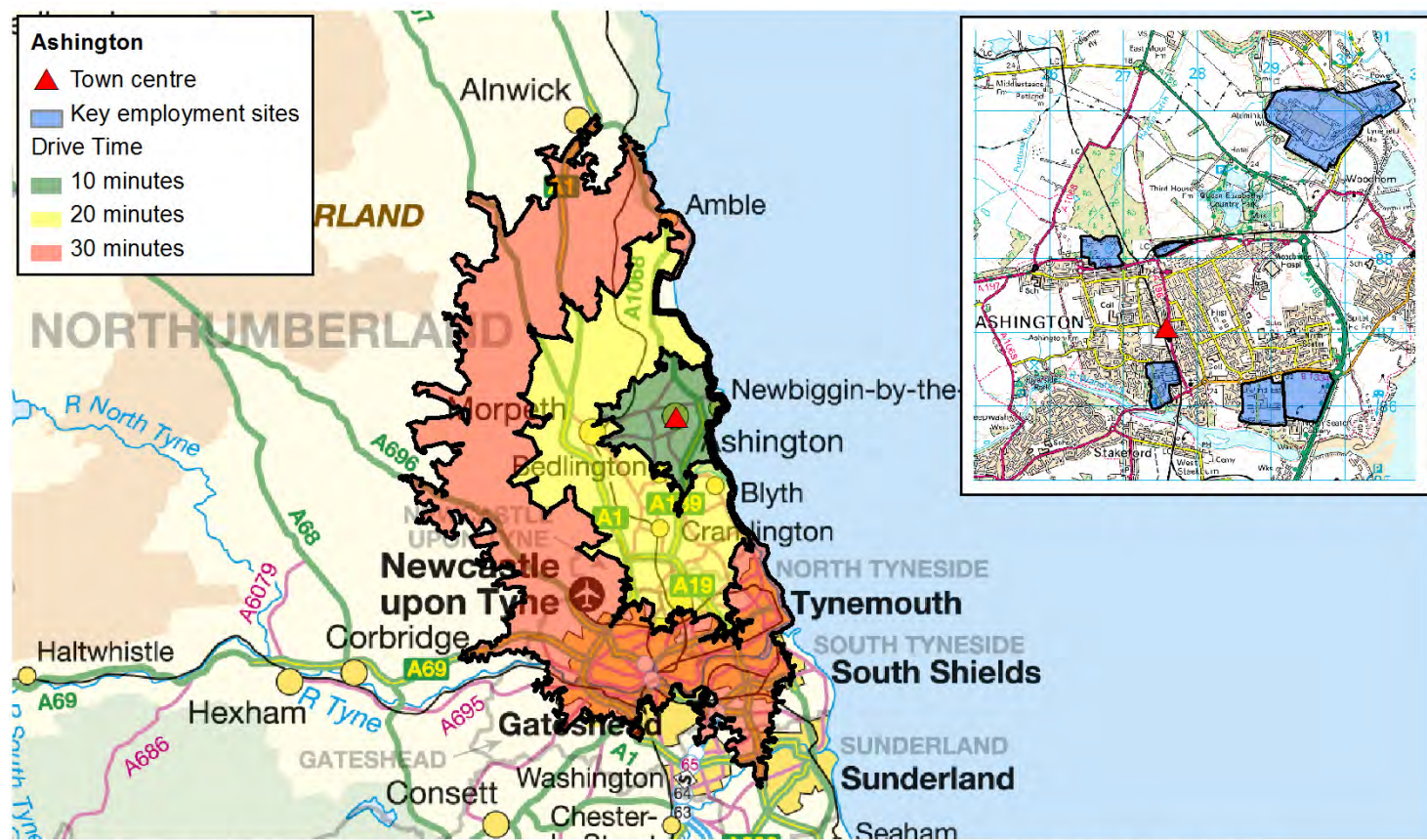


Published September 2013. Scale: 1:650,000 © Crown Copyright. All rights reserved. Northumberland County Council - OS Licence No. 100049048. Road network and journey time data provided by the Department for Transport and Trafficmaster.

WHO WE ARE	10 Minutes		20 Minutes		30 Minutes	
Key Population Statistics (all usual residents)	Number	Per cent	Number	Per cent	Number	Per cent
All People	12,624	-	48,019	-	204,971	-
Males	6,687	53.0	23,901	49.8	99,988	48.8
Females	5,937	47.0	24,118	50.2	104,983	51.2
16 – 64 years	8,259	65.4	30,560	63.6	130,930	63.9
16 – 24	1,306	10.3	4,851	10.1	20,972	10.2
25 - 44	3,230	25.6	11,543	24.0	49,708	24.3
45 – 64	3,723	29.5	14,166	29.5	60,250	29.4
65 -74 years	1,384	11.0	5,175	10.8	20,703	10.1
Number of people per hectare	1.7	-	1.2	-	2.3	-
HOW WE LIVE	10 Minutes		20 Minutes		30 Minutes	
Households (all household spaces)	Number	Per cent	Number	Per cent	Number	Per cent
All Households	5,179	92.9	20,850	92.3	89,831	95.2
Average Household size	2.2	-	2.2	-	2.2	-
Household by Tenure (all households)	Number	Per cent	Number	Per cent	Number	Per cent
Owned outright	1,743	33.7	6,758	32.4	27,322	30.4
Owned with a mortgage or loan/shared ownership	1,639	31.6	6,606	31.7	31,293	34.8
Social rented	1,078	20.8	3,909	18.7	18,955	21.1
Private rented including living rent free	719	13.9	3,577	17.2	12,261	13.6
Car or Van Availability (all households)	Number	Per cent	Number	Per cent	Number	Per cent
No cars or vans in household	1,206	23.3	4,890	23.5	22,655	25.2
1 car or van in household	2,369	45.7	9,230	44.3	39,751	44.3
2 or more cars or vans in household	1,604	31.0	6,730	32.3	27,425	30.5
Average number of cars or vans per household	1.2	-	1.2	-	1.1	-

WHAT WE DO	10 Minutes		20 Minutes		30 Minutes	
	Number	Per cent	Number	Per cent	Number	Per cent
Economic activity (aged 16-74)						
Economically active	5,944	61.6	23,722	66.4	101,971	67.2
Full-time employee	2,994	31.0	12,767	35.7	57,684	38.0
Part-time employee	1,453	15.1	5,252	14.7	22,235	14.7
Self-employed	764	7.9	3,023	8.5	10,684	7.0
Unemployed	580	6.0	1,948	5.5	7,959	5.2
Full-time student	153	1.6	732	2.0	3,409	2.2
Economically inactive	3,699	38.4	12,013	33.6	49,662	32.8
Industry (aged 16-74 in employment)	Number	Per cent	Number	Per cent	Number	Per cent
Agriculture, forestry & fishing	121	2.3	414	1.9	969	1.0
Mining & quarrying	76	1.4	223	1.0	569	0.6
Manufacturing	391	7.3	1,608	7.4	9,143	9.8
Elec, gas, steam & air conditioning supply; Water supply; sewerage	61	1.1	231	1.1	1,206	1.3
Construction	521	9.8	1,790	8.3	7,474	8.0
Whsale & ret trade; repair motor vehicles...	692	13.0	2,957	13.7	13,691	14.7
Transport & Storage	201	3.8	767	3.5	3,996	4.3
Accommodation & Food Svc Activities	347	6.5	1,364	6.3	5,019	5.4
Information & Communication	79	1.5	418	1.9	2,336	2.5
Financial & Insurance Activities	72	1.3	353	1.6	2,316	2.5
Real Estate; Professional, Scientific & Technical; Admin. & Support Svc.	485	9.1	2,147	9.9	9,197	9.9
Pub Admin & Defence; Compulsory Social Security	766	14.3	2,807	13.0	10,274	11.0
Education	421	7.9	1,821	8.4	7,756	8.3
Human Health & Social Work	855	16.0	3,625	16.8	15,122	16.2
Other	253	4.7	1,087	5.0	4,175	4.5
Occupation (aged 16-74 in employment)	Number	Per cent	Number	Per cent	Number	Per cent
Managers, Directors and Senior Officials	468	8.8	2,221	10.3	8,477	9.1
Professional Occupations	679	12.7	3,162	14.6	13,000	13.9
Associate Professional and Technical Occupations	643	12.0	2,653	12.3	10,946	11.7
Administrative and Secretarial Occupations	517	9.7	2,298	10.6	11,900	12.8
Skilled Trades Occupations	814	15.2	2,750	12.7	11,346	12.2
Caring, Leisure and Other Service Occupations	628	11.8	2,549	11.8	10,389	11.1
Sales and Customer Service Occupations	382	7.2	1,668	7.7	8,817	9.5
Process, Plant and Machine Operatives	459	8.6	1,659	7.7	7,574	8.1
Elementary Occupations	751	14.1	2,652	12.3	10,794	11.6
Socio-Economic Classification (aged 16-74 in employment)	Number	Per cent	Number	Per cent	Number	Per cent
Higher Managerial, Admin & Prof Occupations	623	6.5	2,892	8.1	11,300	7.5
Lower Managerial, Admin & Prof Occupations	1,720	17.8	7,238	20.3	30,285	20.0
Intermediate Occupations	1,114	11.6	4,447	12.4	21,539	14.2
Small Employers & Own Account Workers	964	10.0	3,369	9.4	11,591	7.6
Lower Supervisory & Technical Occupations	871	9.0	3,066	8.6	12,941	8.5
Semi-Routine Occupations	1,633	16.9	5,787	16.2	25,110	16.6
Routine Occupations	1,563	16.2	4,963	13.9	21,623	14.3
Never Worked and Long-Term Unemployed	726	7.5	2,108	5.9	8,750	5.8
Not Classified	429	4.4	1,865	5.2	8,494	5.6
Highest Level of Qualification (aged 16+)	Number	Per cent	Number	Per cent	Number	Per cent
No qualifications	2,901	27.0	10,126	25.2	43,594	25.8
Level 1 qualifications	1,556	14.5	5,445	13.6	24,466	14.5
Level 2 qualifications	1,841	17.1	6,706	16.7	28,644	17.0
Apprenticeship	540	5.0	1,795	4.5	7,861	4.7
Level 3 qualifications	1,209	11.3	4,898	12.2	21,287	12.6
Level 4 qualifications and above	2,239	20.8	9,545	23.8	36,720	21.7
Other qualifications	459	4.3	1,633	4.1	6,273	3.7

This fact sheet relates to people living within a 10, 20 and 30 minute drive time of Ashington.

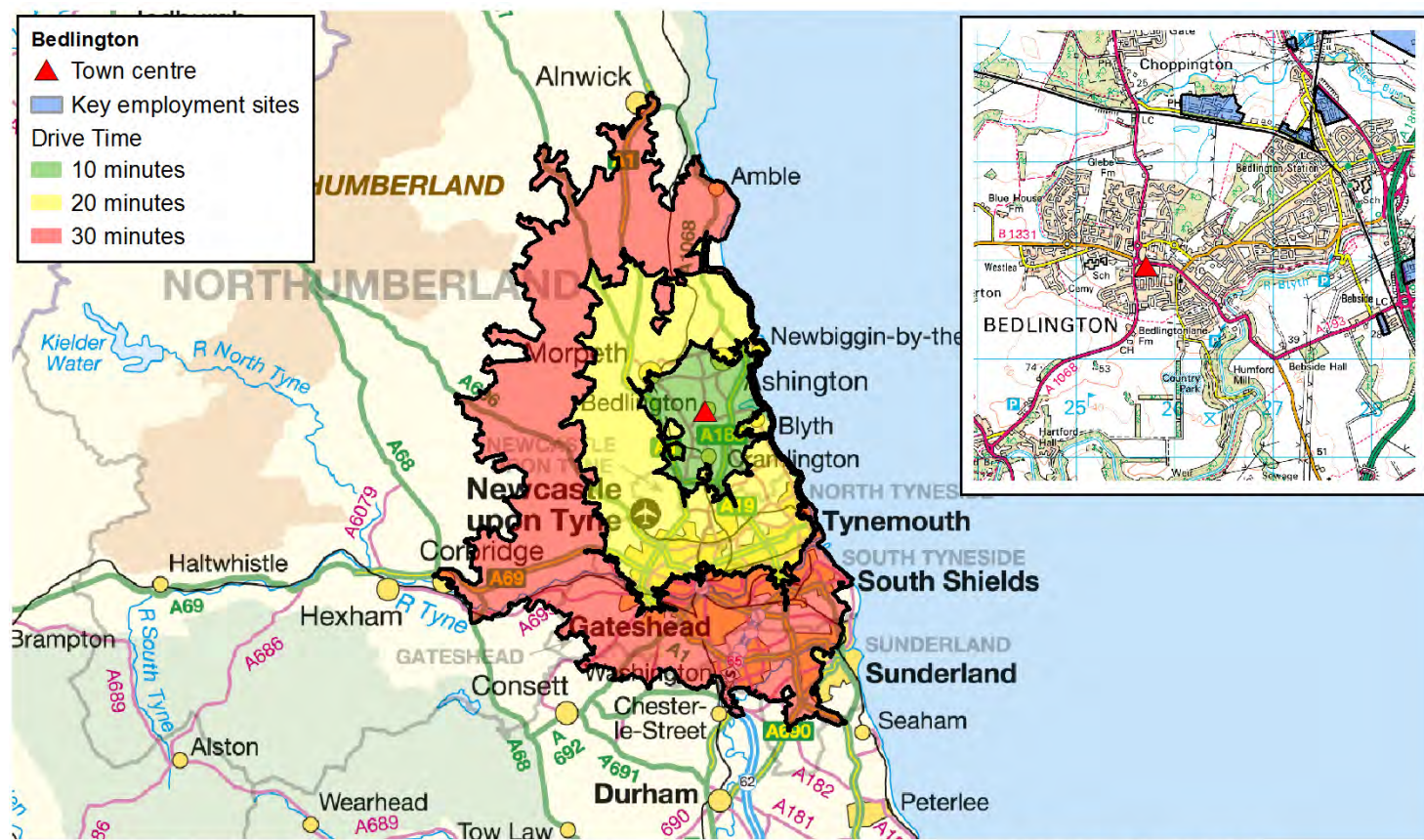


Published September 2013. Scale: 1:650,000 © Crown Copyright. All rights reserved. Northumberland County Council - OS Licence No. 100049048. Road network and journey time data provided by the Department for Transport and Trafficmaster.

WHO WE ARE	10 Minutes		20 Minutes		30 Minutes	
Key Population Statistics (all usual residents)	Number	Per cent	Number	Per cent	Number	Per cent
All People	62,539	-	234,889	-	868,709	-
Males	30,476	48.7	114,312	48.7	426,444	49.1
Females	32,063	51.3	120,577	51.3	442,265	50.9
16 – 64 years	40,070	64.1	151,073	64.3	574,145	66.1
16 – 24	6,687	10.7	24,044	10.2	117,859	13.6
25 - 44	15,817	25.3	60,276	25.7	227,703	26.2
45 – 64	17,566	28.1	66,753	28.4	228,583	26.3
65 -74 years	6,109	9.8	22,559	9.6	73,956	8.5
Number of people per hectare	7.1	-	5.2	-	7.9	-
HOW WE LIVE	10 Minutes		20 Minutes		30 Minutes	
Households (all household spaces)	Number	Per cent	Number	Per cent	Number	Per cent
All Households	27,850	94.8	103,396	96.5	380,729	96.2
Average Household size	2.2	-	2.2	-	2.2	-
Household by Tenure (all households)	Number	Per cent	Number	Per cent	Number	Per cent
Owned outright	7,931	28.5	29,649	28.7	98,454	25.9
Owned with a mortgage or loan/shared ownership	9,569	34.4	37,936	36.7	124,131	32.6
Social rented	6,245	22.4	23,149	22.4	99,512	26.1
Private rented including living rent free	4,105	14.7	12,662	12.2	58,632	15.4
Car or Van Availability (all households)	Number	Per cent	Number	Per cent	Number	Per cent
No cars or vans in household	8,203	29.5	27,445	26.5	132,314	34.8
1 car or van in household	12,212	43.8	46,326	44.8	159,852	42.0
2 or more cars or vans in household	7,435	26.7	29,625	28.7	88,563	23.3
Average number of cars or vans per household	1.0	-	1.1	-	0.9	-

WHAT WE DO	10 Minutes		20 Minutes		30 Minutes	
	Number	Per cent	Number	Per cent	Number	Per cent
Economic activity (aged 16-74)						
Economically active	30,840	66.8	118,438	68.2	431,520	66.6
Full-time employee	17,554	38.0	68,947	39.7	241,677	37.3
Part-time employee	6,698	14.5	25,460	14.7	88,844	13.7
Self-employed	2,618	5.7	10,970	6.3	40,875	6.3
Unemployed	3,005	6.5	9,002	5.2	34,209	5.3
Full-time student	965	2.1	4,059	2.3	25,915	4.0
Economically inactive	15,339	33.2	55,194	31.8	216,581	33.4
Industry (aged 16-74 in employment)	Number	Per cent	Number	Per cent	Number	Per cent
Agriculture, forestry & fishing	137	0.5	558	0.5	1,262	0.3
Mining & quarrying	194	0.7	582	0.5	1,580	0.4
Manufacturing	2,976	10.8	10,791	9.9	33,825	8.7
Elec, gas, steam & air conditioning supply; Water supply; sewerage	426	1.5	1,471	1.4	4,941	1.3
Construction	2,157	7.8	8,724	8.0	28,676	7.3
Wholesale & retail trade; repair motor vehicles...	4,090	14.8	16,204	14.9	58,682	15.0
Transport & Storage	1,243	4.5	4,900	4.5	18,234	4.7
Accommodation & Food Svc Activities	1,364	4.9	5,430	5.0	24,526	6.3
Information & Communication	552	2.0	3,354	3.1	13,223	3.4
Financial & Insurance Activities	546	2.0	3,172	2.9	11,874	3.0
Real Estate; Professional, Scientific & Technical; Admin. & Support Svc.	2,397	8.7	10,692	9.9	43,144	11.0
Public Admin & Defence; Compulsory Social Security	2,738	9.9	11,773	10.9	35,416	9.1
Education	2,043	7.4	8,974	8.3	37,342	9.6
Human Health & Social Work	5,534	20.1	17,209	15.9	59,784	15.3
Other	1,183	4.3	4,642	4.3	18,240	4.7
Occupation (aged 16-74 in employment)	Number	Per cent	Number	Per cent	Number	Per cent
Managers, Directors and Senior Officials	2,192	7.9	9,204	8.5	32,844	8.4
Professional Occupations	3,241	11.8	15,268	14.1	65,780	16.8
Associate Professional and Technical Occupations	2,883	10.5	12,778	11.8	44,339	11.3
Administrative and Secretarial Occupations	3,376	12.2	15,004	13.8	49,975	12.8
Skilled Trades Occupations	3,274	11.9	12,642	11.7	42,221	10.8
Caring, Leisure and Other Service Occupations	3,691	13.4	11,504	10.6	37,995	9.7
Sales and Customer Service Occupations	2,708	9.8	11,091	10.2	42,033	10.8
Process, Plant and Machine Operatives	2,660	9.6	8,870	8.2	29,270	7.5
Elementary Occupations	3,555	12.9	12,115	11.2	46,292	11.8
Socio-Economic Classification (aged 16-74 in employment)	Number	Per cent	Number	Per cent	Number	Per cent
Higher Managerial, Admin & Prof Occupations	2,424	5.2	12,863	7.4	54,546	8.4
Lower Managerial, Admin & Prof Occupations	8,203	17.8	34,459	19.8	119,949	18.5
Intermediate Occupations	6,233	13.5	26,233	15.1	86,430	13.3
Small Employers & Own Account Workers	3,087	6.7	11,850	6.8	41,264	6.4
Lower Supervisory & Technical Occupations	4,312	9.3	14,671	8.4	47,493	7.3
Semi-Routine Occupations	8,364	18.1	28,868	16.6	100,127	15.4
Routine Occupations	7,659	16.6	24,845	14.3	85,512	13.2
Never Worked and Long-Term Unemployed	3,359	7.3	9,991	5.8	42,022	6.5
Not Classified	2,538	5.5	9,852	5.7	70,758	10.9
Highest Level of Qualification (aged 16+)	Number	Per cent	Number	Per cent	Number	Per cent
No qualifications	14,844	29.0	49,970	25.9	179,468	25.0
Level 1 qualifications	7,711	15.1	28,792	14.9	96,306	13.4
Level 2 qualifications	8,829	17.2	32,623	16.9	108,376	15.1
Apprenticeship	2,202	4.3	9,436	4.9	32,787	4.6
Level 3 qualifications	6,637	13.0	24,204	12.6	98,017	13.7
Level 4 qualifications and above	9,018	17.6	40,537	21.0	171,852	24.0
Other qualifications	1,963	3.8	7,160	3.7	29,783	4.2

This fact sheet relates to people living within a 10, 20 and 30 minute drive time of Bedlington.

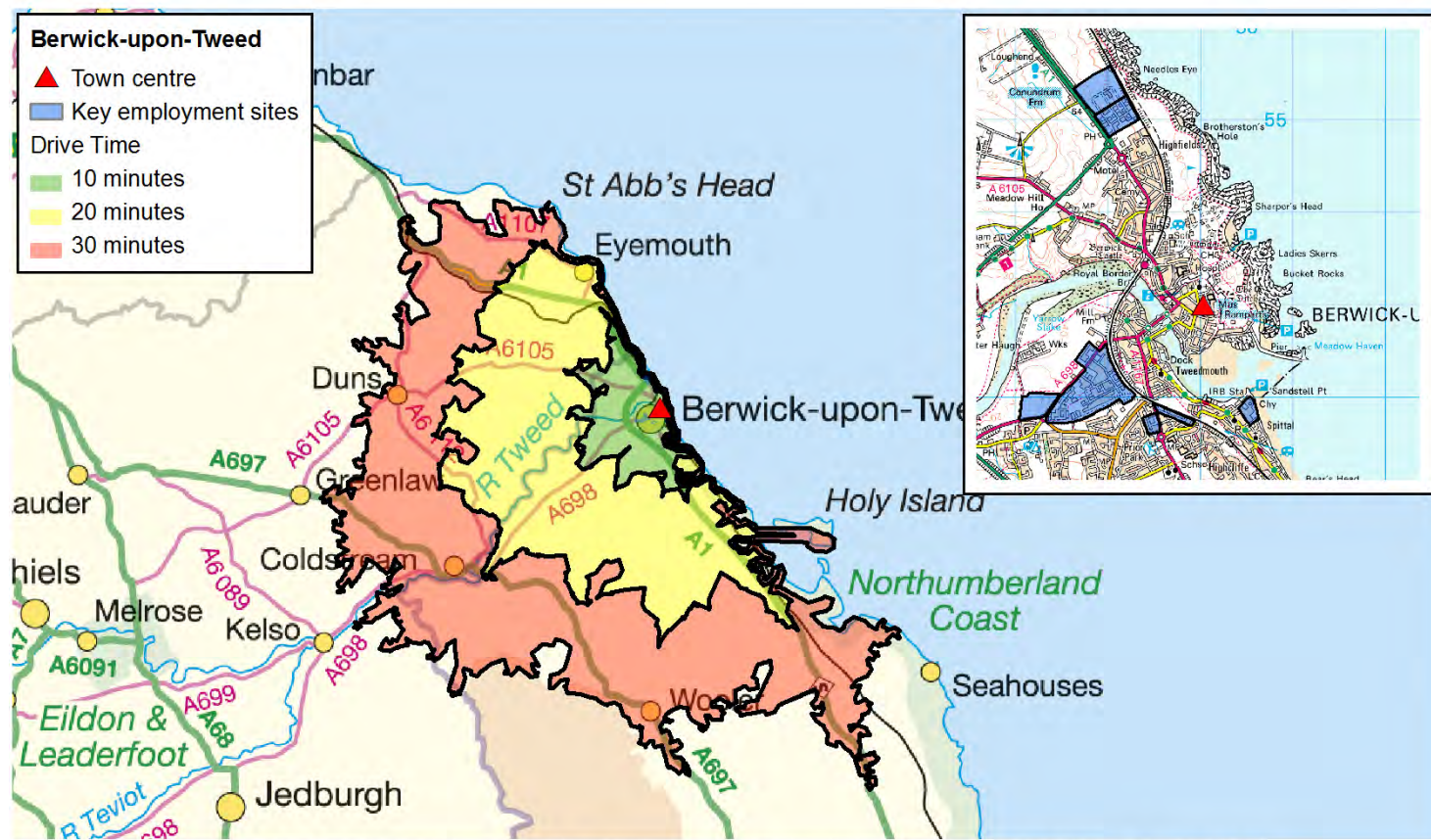


Published September 2013. Scale: 1:750,000 © Crown Copyright. All rights reserved. Northumberland County Council - OS Licence No. 100049048. Road network and journey time data provided by the Department for Transport and Trafficmaster.

WHO WE ARE	10 Minutes		20 Minutes		30 Minutes	
	Number	Per cent	Number	Per cent	Number	Per cent
Key Population Statistics (all usual residents)						
All People	100,929	-	562,480	-	1,196,070	-
Males	48,852	48.4	273,288	48.6	584,975	48.9
Females	52,077	51.6	289,192	51.4	611,095	51.1
16 – 64 years	64,747	64.2	365,506	65.0	783,784	65.5
16 – 24	10,575	10.5	67,732	12.0	153,003	12.8
25 - 44	25,086	24.9	144,294	25.7	309,766	25.9
45 – 64	29,086	28.8	153,480	27.3	321,015	26.8
65 -74 years	9,930	9.8	50,282	8.9	105,897	8.9
Number of people per hectare	8.9	-	9.3	-	8.3	-
HOW WE LIVE						
Households (all household spaces)						
All Households	43,888	96.6	246,317	96.6	523,601	96.4
Average Household size	2.3	-	2.3	-	2.2	-
Household by Tenure (all households)						
Owned outright	12,687	28.9	70,772	28.7	138,853	26.5
Owned with a mortgage or loan/shared ownership	16,344	37.2	87,169	35.4	172,916	33.0
Social rented	9,963	22.7	53,995	21.9	138,398	26.4
Private rented including living rent free	4,894	11.2	34,381	14.0	73,434	14.0
Car or Van Availability (all households)						
No cars or vans in household	11,094	25.3	74,751	30.3	179,619	34.3
1 car or van in household	19,508	44.4	107,971	43.8	219,820	42.0
2 or more cars or vans in household	13,286	30.3	63,595	25.8	124,162	23.7
Average number of cars or vans per household	1.1	-	1.0	-	1.0	-

WHAT WE DO	10 Minutes		20 Minutes		30 Minutes	
	Number	Per cent	Number	Per cent	Number	Per cent
Economic activity (aged 16-74)						
Economically active	50,630	67.8	283,041	68.1	593,831	66.7
Full-time employee	29,508	39.5	162,170	39.0	335,023	37.7
Part-time employee	11,009	14.7	58,776	14.1	123,896	13.9
Self-employed	4,426	5.9	27,516	6.6	55,707	6.3
Unemployed	3,880	5.2	20,230	4.9	46,832	5.3
Full-time student	1,807	2.4	14,349	3.5	32,373	3.6
Economically inactive	24,047	32.2	132,747	31.9	295,850	33.3
Industry (aged 16-74 in employment)	Number	Per cent	Number	Per cent	Number	Per cent
Agriculture, forestry & fishing	187	0.4	749	0.3	1,643	0.3
Mining & quarrying	244	0.5	1,037	0.4	2,123	0.4
Manufacturing	5,182	11.2	21,813	8.4	50,853	9.4
Elec, gas, steam & air conditioning supply; Water supply; sewerage	660	1.4	3,217	1.2	7,624	1.4
Construction	3,644	7.9	19,217	7.4	40,209	7.5
Whsale & ret trade; repair motor vehicles...	6,901	14.9	38,226	14.7	82,698	15.3
Transport & Storage	2,146	4.6	11,788	4.5	26,200	4.9
Accommodation & Food Svc Activities	2,252	4.9	14,634	5.6	32,161	6.0
Information & Communication	1,230	2.7	9,093	3.5	17,065	3.2
Financial & Insurance Activities	1,301	2.8	8,306	3.2	16,619	3.1
Real Estate; Professional, Scientific & Technical; Admin. & Support Svc.	4,402	9.5	28,221	10.9	58,219	10.8
Pub Admin & Defence; Compulsory Social Security	4,960	10.7	25,230	9.7	47,907	8.9
Education	3,767	8.1	25,307	9.8	50,699	9.4
Human Health & Social Work	7,545	16.3	40,833	15.7	80,295	14.9
Other	1,902	4.1	11,752	4.5	24,595	4.6
Occupation (aged 16-74 in employment)	Number	Per cent	Number	Per cent	Number	Per cent
Managers, Directors and Senior Officials	3,915	8.5	22,449	8.7	45,425	8.4
Professional Occupations	5,977	12.9	45,725	17.6	86,366	16.0
Associate Professional and Technical Occupations	5,498	11.9	30,041	11.6	60,475	11.2
Administrative and Secretarial Occupations	6,387	13.8	34,782	13.4	69,544	12.9
Skilled Trades Occupations	5,329	11.5	27,462	10.6	59,666	11.1
Caring, Leisure and Other Service Occupations	5,157	11.1	24,978	9.6	52,115	9.7
Sales and Customer Service Occupations	4,695	10.1	27,293	10.5	58,268	10.8
Process, Plant and Machine Operatives	4,071	8.8	18,528	7.1	42,872	8.0
Elementary Occupations	5,294	11.4	28,165	10.9	64,179	11.9
Socio-Economic Classification (aged 16-74 in employment)	Number	Per cent	Number	Per cent	Number	Per cent
Higher Managerial, Admin & Prof Occupations	5,063	6.8	38,266	9.2	71,806	8.1
Lower Managerial, Admin & Prof Occupations	14,663	19.6	83,190	20.0	164,666	18.5
Intermediate Occupations	11,123	14.9	59,868	14.4	121,359	13.6
Small Employers & Own Account Workers	4,857	6.5	27,560	6.6	57,218	6.4
Lower Supervisory & Technical Occupations	6,539	8.8	30,869	7.4	67,363	7.6
Semi-Routine Occupations	12,681	17.0	63,699	15.3	141,672	15.9
Routine Occupations	11,076	14.8	51,812	12.5	122,152	13.7
Never Worked and Long-Term Unemployed	4,251	5.7	23,257	5.6	56,708	6.4
Not Classified	4,424	5.9	37,267	9.0	86,737	9.7
Highest Level of Qualification (aged 16+)	Number	Per cent	Number	Per cent	Number	Per cent
No qualifications	21,748	26.4	112,026	24.2	253,731	25.7
Level 1 qualifications	12,418	15.1	62,690	13.6	136,580	13.9
Level 2 qualifications	14,168	17.2	72,029	15.6	151,863	15.4
Apprenticeship	3,962	4.8	21,586	4.7	47,297	4.8
Level 3 qualifications	10,777	13.1	60,790	13.1	129,197	13.1
Level 4 qualifications and above	16,430	19.9	115,346	24.9	226,731	23.0
Other qualifications	3,005	3.6	18,012	3.9	40,043	4.1

This fact sheet relates to people living within a 10, 20 and 30 minute drive time of Berwick-upon-Tweed.

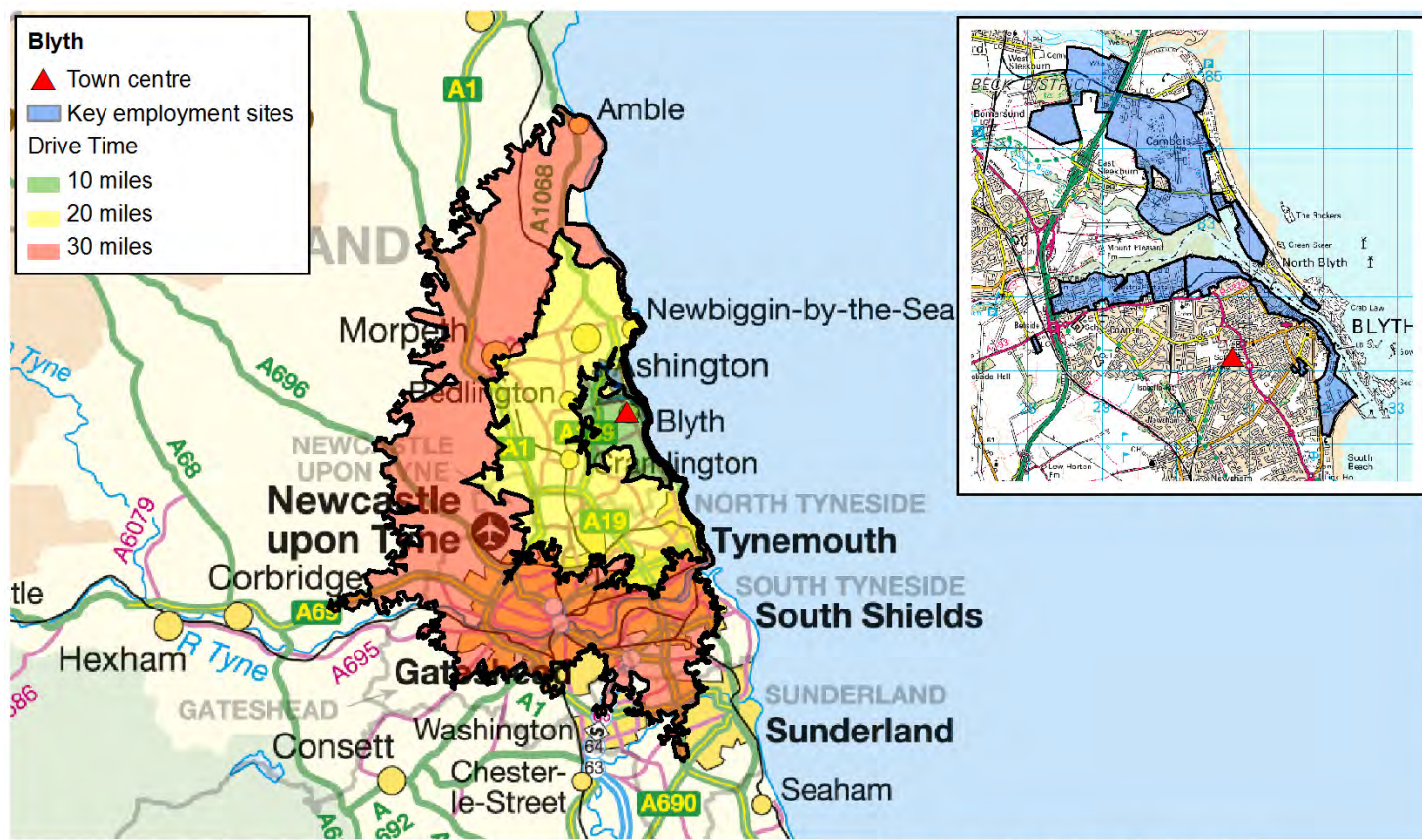


Published September 2013. Scale: 1:600,000 © Crown Copyright. All rights reserved. Northumberland County Council - OS Licence No. 100049048. Road network and journey time data provided by the Department for Transport and Trafficmaster.

WHO WE ARE	10 Minutes		20 Minutes		30 Minutes	
Key Population Statistics (all usual residents)	Number	Per cent	Number	Per cent	Number	Per cent
All People	14,675	-	26,682	-	41,256	-
Males	7,006	47.7	12,890	48.3	20,008	48.5
Females	7,669	52.3	13,792	51.7	21,248	51.5
16 – 64 years	8,949	61.0	16,265	61.0	25,045	60.7
16 – 24	1,385	9.4	2,449	9.2	3,655	8.9
25 - 44	3,300	22.5	5,725	21.5	8,474	20.5
45 – 64	4,264	29.1	8,091	30.3	12,916	31.3
65 -74 years	1,668	11.4	3,240	12.1	5,281	12.8
Number of people per hectare	1.9	-	0.6	-	0.4	-
HOW WE LIVE	10 Minutes		20 Minutes		30 Minutes	
Households (all household spaces)	Number	Per cent	Number	Per cent	Number	Per cent
All Households	6,560	92.5	12,034	91.2	18,918	89.0
Average Household size	2.2	-	2.2	-	2.2	-
Household by Tenure (all households)	Number	Per cent	Number	Per cent	Number	Per cent
Owned outright	2,228	34.0	4,223	35.1	6,691	35.4
Owned with a mortgage or loan/shared ownership	1,806	27.5	3,136	26.1	4,590	24.3
Social rented	1,483	22.6	2,652	22.0	3,960	20.9
Private rented including living rent free	1,043	15.9	2,023	16.8	3,677	19.4
Car or Van Availability (all households)	Number	Per cent	Number	Per cent	Number	Per cent
No cars or vans in household	1,822	27.8	2,735	22.7	3,850	20.4
1 car or van in household	3,192	48.7	5,758	47.8	9,017	47.7
2 or more cars or vans in household	1,546	23.6	3,541	29.4	6,051	32.0
Average number of cars or vans per household	1.0	-	1.2	-	1.2	-

WHAT WE DO	10 Minutes		20 Minutes		30 Minutes	
	Number	Per cent	Number	Per cent	Number	Per cent
Economic activity (aged 16-74)						
Economically active	7,309	68.8	13,190	67.6	20,396	67.3
Full-time employee	3,779	35.6	6,615	33.9	10,120	33.4
Part-time employee	1,833	17.3	3,192	16.4	4,755	15.7
Self-employed	1,038	9.8	2,273	11.7	3,925	12.9
Unemployed	440	4.1	766	3.9	1,130	3.7
Full-time student	219	2.1	344	1.8	466	1.5
Economically inactive	3,308	31.2	6,315	32.4	9,930	32.7
Industry (aged 16-74 in employment)	Number	Per cent	Number	Per cent	Number	Per cent
Agriculture, forestry & fishing	193	2.8	746	6.0	1,571	8.2
Mining & quarrying	12	0.2	33	0.3	52	0.3
Manufacturing	858	12.6	1,462	11.8	2,091	10.9
Elec, gas, steam & air conditioning supply; Water supply; sewerage	167	2.4	325	2.6	440	2.3
Construction	594	8.7	1,023	8.3	1,647	8.6
Whsale & ret trade; repair motor vehicles...	1,550	22.7	2,431	19.7	3,395	17.7
Transport & Storage	300	4.4	514	4.2	792	4.1
Accommodation & Food Svc Activities	589	8.6	1,015	8.2	1,603	8.4
Information & Communication	77	1.1	137	1.1	207	1.1
Financial & Insurance Activities	105	1.5	213	1.7	334	1.7
Real Estate; Professional, Scientific & Technical; Admin. & Support Svc.	556	8.1	1,042	8.4	1,711	8.9
Pub Admin & Defence; Compulsory Social Security	252	3.7	469	3.8	755	3.9
Education	471	6.9	900	7.3	1,364	7.1
Human Health & Social Work	778	11.4	1,444	11.7	2,249	11.7
Other	329	4.8	607	4.9	975	5.1
Occupation (aged 16-74 in employment)	Number	Per cent	Number	Per cent	Number	Per cent
Managers, Directors and Senior Officials	678	9.9	1,251	10.1	2,053	10.7
Professional Occupations	627	9.2	1,316	10.6	2,123	11.1
Associate Professional and Technical Occupations	532	7.8	1,072	8.7	1,624	8.5
Administrative and Secretarial Occupations	588	8.6	1,025	8.3	1,645	8.6
Skilled Trades Occupations	1,026	15.0	2,049	16.6	3,430	17.9
Caring, Leisure and Other Service Occupations	747	10.9	1,330	10.8	1,999	10.4
Sales and Customer Service Occupations	850	12.4	1,225	9.9	1,626	8.5
Process, Plant and Machine Operatives	858	12.6	1,454	11.8	2,132	11.1
Elementary Occupations	925	13.5	1,639	13.3	2,554	13.3
Socio-Economic Classification (aged 16-74 in employment)	Number	Per cent	Number	Per cent	Number	Per cent
Higher Managerial, Admin & Prof Occupations	600	5.7	1,247	6.4	2,037	6.7
Lower Managerial, Admin & Prof Occupations	1,855	17.5	3,651	18.7	5,801	19.1
Intermediate Occupations	1,072	10.1	1,911	9.8	3,046	10.0
Small Employers & Own Account Workers	1,120	10.5	2,452	12.6	4,200	13.8
Lower Supervisory & Technical Occupations	983	9.3	1,730	8.9	2,664	8.8
Semi-Routine Occupations	2,425	22.8	4,086	20.9	5,952	19.6
Routine Occupations	1,673	15.8	2,854	14.6	4,247	14.0
Never Worked and Long-Term Unemployed	385	3.6	674	3.5	1,023	3.4
Not Classified	504	4.7	900	4.6	1,356	4.5
Highest Level of Qualification (aged 16+)	Number	Per cent	Number	Per cent	Number	Per cent
No qualifications	3,549	29.0	6,432	28.8	9,952	28.6
Level 1 qualifications	1,908	15.6	4,187	18.8	6,691	19.2
Level 2 qualifications	2,037	16.7	2,774	12.4	3,936	11.3
Apprenticeship	631	5.2	762	3.4	959	2.8
Level 3 qualifications	1,254	10.3	2,042	9.2	3,116	9.0
Level 4 qualifications and above	2,263	18.5	4,848	21.7	7,983	22.9
Other qualifications	578	4.7	1,267	5.7	2,170	6.2

This fact sheet relates to people living within a 10, 20 and 30 minute drive time of Blyth.

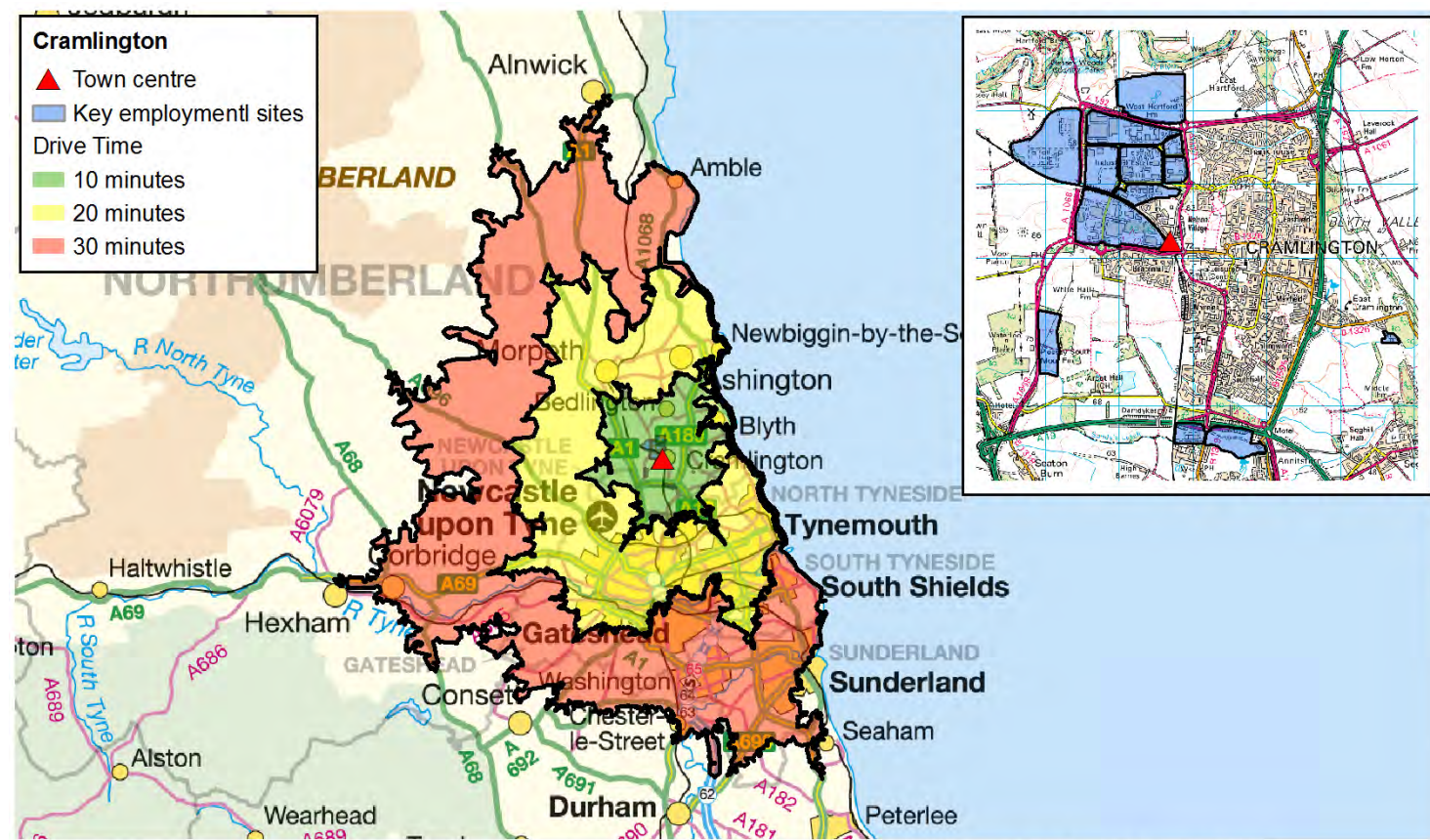


Published September 2013. Scale: 1:600,000 © Crown Copyright. All rights reserved. Northumberland County Council - OS Licence No. 100049048. Road network and journey time data provided by the Department for Transport and Trafficmaster.

WHO WE ARE	10 Minutes		20 Minutes		30 Minutes	
Key Population Statistics (all usual residents)	Number	Per cent	Number	Per cent	Number	Per cent
All People	45,692	-	316,546	-	930,691	-
Males	22,199	48.6	153,041	48.3	456,836	49.1
Females	23,493	51.4	163,505	51.7	473,855	50.9
16 – 64 years	29,112	63.7	202,491	64.0	614,109	66.0
16 – 24	5,103	11.2	32,275	10.2	125,162	13.4
25 - 44	11,343	24.8	80,964	25.6	244,867	26.3
45 – 64	12,666	27.7	89,252	28.2	244,080	26.2
65 -74 years	4,279	9.4	30,174	9.5	79,418	8.5
Number of people per hectare	15.2	-	11.6	-	11.3	-
HOW WE LIVE	10 Minutes		20 Minutes		30 Minutes	
Households (all household spaces)	Number	Per cent	Number	Per cent	Number	Per cent
All Households	20,199	96.4	139,761	96.6	408,382	96.2
Average Household size	2.2	-	2.2	-	2.2	-
Household by Tenure (all households)	Number	Per cent	Number	Per cent	Number	Per cent
Owned outright	5,433	26.9	41,769	29.9	105,541	25.8
Owned with a mortgage or loan/shared ownership	6,746	33.4	51,948	37.2	133,006	32.6
Social rented	5,392	26.7	29,170	20.9	107,042	26.2
Private rented including living rent free	2,628	13.0	16,874	12.1	62,793	15.4
Car or Van Availability (all households)	Number	Per cent	Number	Per cent	Number	Per cent
No cars or vans in household	6,101	30.2	38,136	27.3	143,867	35.2
1 car or van in household	8,944	44.3	63,185	45.2	171,434	42.0
2 or more cars or vans in household	5,154	25.5	38,440	27.5	93,081	22.8
Average number of cars or vans per household	1.0	-	1.1	-	0.9	-

WHAT WE DO	10 Minutes		20 Minutes		30 Minutes	
	Number	Per cent	Number	Per cent	Number	Per cent
Economic activity (aged 16-74)						
Economically active	22,129	66.3	160,346	68.9	461,862	66.6
Full-time employee	12,526	37.5	93,709	40.3	259,565	37.4
Part-time employee	4,921	14.7	34,238	14.7	95,317	13.7
Self-employed	1,904	5.7	14,955	6.4	42,832	6.2
Unemployed	2,003	6.0	11,462	4.9	36,917	5.3
Full-time student	775	2.3	5,982	2.6	27,231	3.9
Economically inactive	11,262	33.7	72,319	31.1	231,665	33.4
Industry (aged 16-74 in employment)	Number	Per cent	Number	Per cent	Number	Per cent
Agriculture, forestry & fishing	71	0.4	404	0.3	1,077	0.3
Mining & quarrying	81	0.4	674	0.5	1,671	0.4
Manufacturing	2,219	11.1	13,860	9.4	37,074	8.9
Elec, gas, steam & air conditioning supply; Water supply; sewerage	279	1.4	1,951	1.3	5,408	1.3
Construction	1,814	9.1	11,381	7.7	30,756	7.4
Whsale & ret trade; repair motor vehicles...	3,161	15.9	21,549	14.6	63,095	15.1
Transport & Storage	995	5.0	6,537	4.4	19,820	4.7
Accommodation & Food Svc Activities	1,014	5.1	7,256	4.9	26,021	6.2
Information & Communication	569	2.9	5,155	3.5	14,048	3.4
Financial & Insurance Activities	553	2.8	4,639	3.1	12,818	3.1
Real Estate; Professional, Scientific & Technical; Admin. & Support Svc.	1,946	9.8	15,156	10.3	45,958	11.0
Pub Admin & Defence; Compulsory Social Security	1,913	9.6	15,730	10.7	37,590	9.0
Education	1,422	7.1	13,777	9.3	39,742	9.5
Human Health & Social Work	2,980	15.0	23,083	15.6	63,609	15.2
Other	890	4.5	6,370	4.3	19,376	4.6
Occupation (aged 16-74 in employment)	Number	Per cent	Number	Per cent	Number	Per cent
Managers, Directors and Senior Officials	1,526	7.7	12,840	8.7	34,703	8.3
Professional Occupations	2,054	10.3	23,927	16.2	69,388	16.6
Associate Professional and Technical Occupations	2,135	10.7	17,629	12.0	47,334	11.3
Administrative and Secretarial Occupations	2,679	13.5	20,778	14.1	53,754	12.9
Skilled Trades Occupations	2,611	13.1	16,055	10.9	45,352	10.8
Caring, Leisure and Other Service Occupations	2,292	11.5	14,677	9.9	40,702	9.7
Sales and Customer Service Occupations	2,298	11.5	15,118	10.2	45,130	10.8
Process, Plant and Machine Operatives	1,823	9.2	11,150	7.6	31,881	7.6
Elementary Occupations	2,489	12.5	15,348	10.4	49,819	11.9
Socio-Economic Classification (aged 16-74 in employment)	Number	Per cent	Number	Per cent	Number	Per cent
Higher Managerial, Admin & Prof Occupations	1,729	5.2	19,869	8.5	57,274	8.3
Lower Managerial, Admin & Prof Occupations	5,633	16.9	48,581	20.9	127,656	18.4
Intermediate Occupations	4,830	14.5	35,903	15.4	92,962	13.4
Small Employers & Own Account Workers	2,159	6.5	15,559	6.7	43,464	6.3
Lower Supervisory & Technical Occupations	2,964	8.9	18,508	8.0	51,418	7.4
Semi-Routine Occupations	6,170	18.5	37,153	16.0	108,226	15.6
Routine Occupations	5,664	17.0	30,348	13.0	92,947	13.4
Never Worked and Long-Term Unemployed	2,324	7.0	12,338	5.3	45,330	6.5
Not Classified	1,918	5.7	14,406	6.2	74,250	10.7
Highest Level of Qualification (aged 16+)	Number	Per cent	Number	Per cent	Number	Per cent
No qualifications	10,670	28.8	63,583	24.5	194,478	25.3
Level 1 qualifications	5,989	16.2	37,226	14.4	103,881	13.5
Level 2 qualifications	6,433	17.4	42,963	16.6	116,406	15.2
Apprenticeship	1,953	5.3	12,941	5.0	35,707	4.7
Level 3 qualifications	4,726	12.8	32,115	12.4	103,880	13.5
Level 4 qualifications and above	5,906	15.9	60,767	23.4	180,838	23.6
Other qualifications	1,374	3.7	9,642	3.7	32,083	4.2

This fact sheet relates to people living within a 10, 20 and 30 minute drive time of Cramlington.

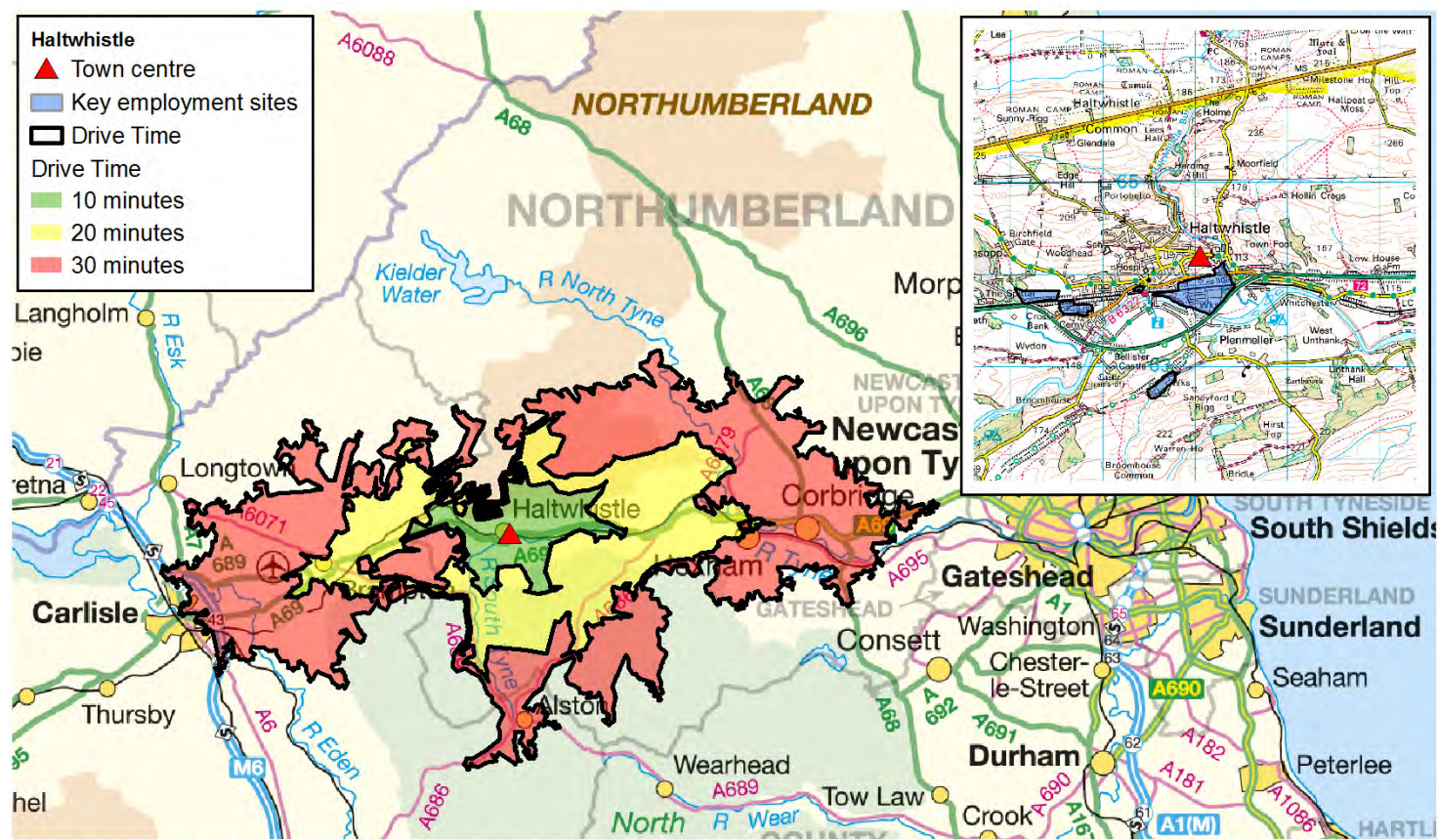


Published September 2013. Scale: 1:725,000 © Crown Copyright. All rights reserved. Northumberland County Council - OS Licence No. 100049048. Road network and journey time data provided by the Department for Transport and Trafficmaster.

WHO WE ARE	10 Minutes		20 Minutes		30 Minutes	
Key Population Statistics (all usual residents)	Number	Per cent	Number	Per cent	Number	Per cent
All People	100,593	-	760,086	-	1,332,440	-
Males	48,665	48.4	373,035	49.1	651,084	48.9
Females	51,928	51.6	387,051	50.9	681,356	51.1
16 – 64 years	64,931	64.5	502,888	66.2	871,640	65.4
16 – 24	10,343	10.3	104,827	13.8	169,185	12.7
25 - 44	25,585	25.4	198,938	26.2	343,064	25.7
45 – 64	29,003	28.8	199,123	26.2	359,391	27.0
65 -74 years	9,726	9.7	64,790	8.5	119,484	9.0
Number of people per hectare	7.2	-	10.9	-	8.3	-
HOW WE LIVE	10 Minutes		20 Minutes		30 Minutes	
Households (all household spaces)	Number	Per cent	Number	Per cent	Number	Per cent
All Households	43,811	97.1	332,381	96.3	583,483	96.4
Average Household size	2.3	-	2.2	-	2.2	-
Household by Tenure (all households)	Number	Per cent	Number	Per cent	Number	Per cent
Owned outright	12,609	28.8	87,330	26.3	157,989	27.1
Owned with a mortgage or loan/shared ownership	17,070	39.0	109,470	32.9	194,024	33.3
Social rented	9,372	21.4	84,133	25.3	149,950	25.7
Private rented including living rent free	4,760	10.9	51,448	15.5	81,520	14.0
Car or Van Availability (all households)	Number	Per cent	Number	Per cent	Number	Per cent
No cars or vans in household	10,210	23.3	113,489	34.1	197,610	33.9
1 car or van in household	20,040	45.7	140,391	42.2	245,360	42.1
2 or more cars or vans in household	13,561	31.0	78,501	23.6	140,513	24.1
Average number of cars or vans per household	1.2	-	1.0	-	1.0	-

WHAT WE DO	10 Minutes		20 Minutes		30 Minutes	
	Number	Per cent	Number	Per cent	Number	Per cent
Economic activity (aged 16-74)						
Economically active	51,556	69.1	378,435	66.7	661,133	66.7
Full-time employee	30,485	40.8	212,482	37.4	373,464	37.7
Part-time employee	11,045	14.8	77,381	13.6	138,001	13.9
Self-employed	4,658	6.2	35,838	6.3	62,195	6.3
Unemployed	3,527	4.7	29,070	5.1	51,618	5.2
Full-time student	1,841	2.5	23,664	4.2	35,855	3.6
Economically inactive	23,101	30.9	189,243	33.3	329,991	33.3
Industry (aged 16-74 in employment)	Number	Per cent	Number	Per cent	Number	Per cent
Agriculture, forestry & fishing	182	0.4	887	0.3	1,841	0.3
Mining & quarrying	204	0.4	1,266	0.4	2,330	0.4
Manufacturing	5,233	11.0	28,946	8.4	57,411	9.6
Elec, gas, steam & air conditioning supply; Water supply; sewerage	628	1.3	4,268	1.2	9,028	1.5
Construction	4,044	8.5	24,850	7.2	44,958	7.5
Whsale & ret trade; repair motor vehicles...	7,332	15.4	51,620	15.0	92,070	15.3
Transport & Storage	2,251	4.7	15,813	4.6	29,186	4.9
Accommodation & Food Svc Activities	2,274	4.8	21,662	6.3	35,522	5.9
Information & Communication	1,522	3.2	11,980	3.5	18,606	3.1
Financial & Insurance Activities	1,557	3.3	10,628	3.1	18,741	3.1
Real Estate; Professional, Scientific & Technical; Admin. & Support Svc.	4,776	10.0	38,096	11.1	64,397	10.7
Pub Admin & Defence; Compulsory Social Security	5,119	10.8	31,245	9.1	53,008	8.8
Education	3,772	7.9	33,193	9.7	56,572	9.4
Human Health & Social Work	6,689	14.1	52,846	15.4	89,403	14.9
Other	2,004	4.2	16,092	4.7	27,339	4.6
Occupation (aged 16-74 in employment)	Number	Per cent	Number	Per cent	Number	Per cent
Managers, Directors and Senior Officials	4,085	8.6	29,120	8.5	50,732	8.4
Professional Occupations	6,181	13.0	59,288	17.3	95,513	15.9
Associate Professional and Technical Occupations	5,830	12.3	39,331	11.5	67,230	11.2
Administrative and Secretarial Occupations	7,028	14.8	44,288	12.9	77,399	12.9
Skilled Trades Occupations	5,675	11.9	36,265	10.6	67,013	11.2
Caring, Leisure and Other Service Occupations	4,729	9.9	33,068	9.6	58,244	9.7
Sales and Customer Service Occupations	5,052	10.6	37,163	10.8	65,128	10.8
Process, Plant and Machine Operatives	3,960	8.3	24,906	7.3	48,104	8.0
Elementary Occupations	5,047	10.6	39,963	11.6	71,049	11.8
Socio-Economic Classification (aged 16-74 in employment)	Number	Per cent	Number	Per cent	Number	Per cent
Higher Managerial, Admin & Prof Occupations	5,507	7.4	49,208	8.7	78,966	8.0
Lower Managerial, Admin & Prof Occupations	15,015	20.1	106,692	18.8	184,108	18.6
Intermediate Occupations	11,959	16.0	76,294	13.4	135,898	13.7
Small Employers & Own Account Workers	5,010	6.7	35,812	6.3	64,315	6.5
Lower Supervisory & Technical Occupations	6,457	8.6	40,860	7.2	75,355	7.6
Semi-Routine Occupations	12,370	16.6	86,279	15.2	158,143	16.0
Routine Occupations	10,309	13.8	72,280	12.7	136,391	13.8
Never Worked and Long-Term Unemployed	3,682	4.9	35,657	6.3	62,290	6.3
Not Classified	4,348	5.8	64,596	11.4	95,658	9.7
Highest Level of Qualification (aged 16+)	Number	Per cent	Number	Per cent	Number	Per cent
No qualifications	20,524	25.0	154,025	24.5	283,898	25.8
Level 1 qualifications	12,877	15.7	82,895	13.2	152,285	13.9
Level 2 qualifications	14,118	17.2	94,075	15.0	170,124	15.5
Apprenticeship	4,326	5.3	28,308	4.5	52,956	4.8
Level 3 qualifications	10,721	13.0	87,916	14.0	143,285	13.0
Level 4 qualifications and above	16,713	20.3	154,151	24.6	252,092	22.9
Other qualifications	2,978	3.6	26,252	4.2	44,717	4.1

This fact sheet relates to people living within a 10, 20 and 30 minute drive time of Haltwhistle.

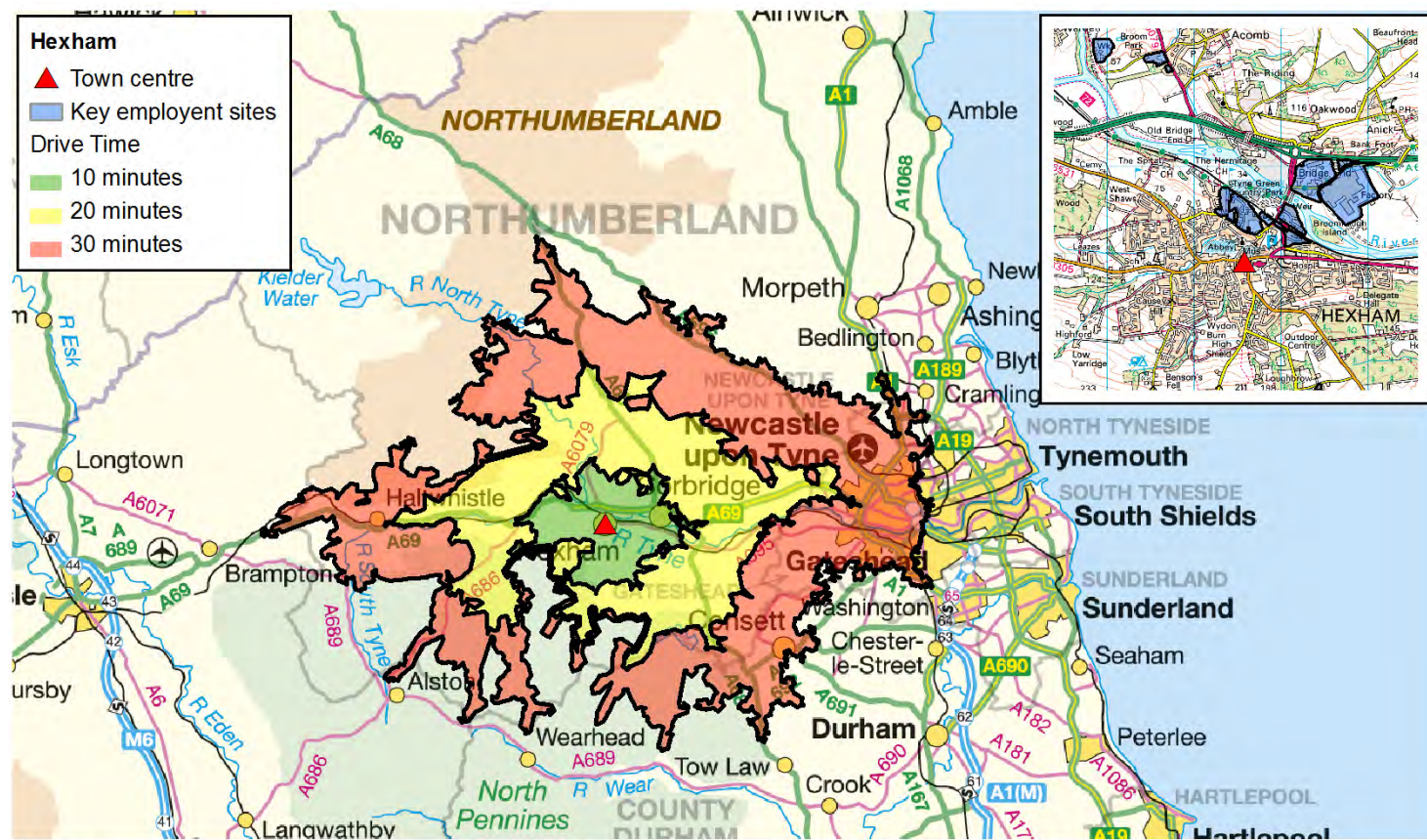


Published September 2013. Scale: 1:700,000 © Crown Copyright. All rights reserved. Northumberland County Council - OS Licence No. 100049048. Road network and journey time data provided by the Department for Transport and Trafficmaster.

WHO WE ARE	10 Minutes		20 Minutes		30 Minutes	
Key Population Statistics (all usual residents)	Number	Per cent	Number	Per cent	Number	Per cent
All People	6,398	-	14,420	-	36,378	-
Males	3,144	49.1	7,072	49.0	17,614	48.4
Females	3,254	50.9	7,348	51.0	18,764	51.6
16 – 64 years	3,930	61.4	8,902	61.7	22,275	61.2
16 – 24	554	8.7	1,306	9.1	3,286	9.0
25 - 44	1,320	20.6	2,959	20.5	7,212	19.8
45 – 64	2,056	32.1	4,637	32.2	11,777	32.4
65 -74 years	810	12.7	1,688	11.7	4,286	11.8
Number of people per hectare	0.3	-	0.3	-	0.3	-
HOW WE LIVE	10 Minutes		20 Minutes		30 Minutes	
Households (all household spaces)	Number	Per cent	Number	Per cent	Number	Per cent
All Households	2,871	93.2	6,329	93.6	15,925	93.6
Average Household size	2.2	-	2.3	-	2.2	-
Household by Tenure (all households)	Number	Per cent	Number	Per cent	Number	Per cent
Owned outright	1,216	42.4	2,483	39.2	6,248	39.2
Owned with a mortgage or loan/shared ownership	749	26.1	1,818	28.7	4,507	28.3
Social rented	427	14.9	877	13.9	2,208	13.9
Private rented including living rent free	479	16.7	1,151	18.2	2,962	18.6
Car or Van Availability (all households)	Number	Per cent	Number	Per cent	Number	Per cent
No cars or vans in household	568	19.8	1,070	16.9	2,720	17.1
1 car or van in household	1,315	45.8	2,851	45.0	6,922	43.5
2 or more cars or vans in household	988	34.4	2,408	38.0	6,283	39.5
Average number of cars or vans per household	1.3	-	1.3	-	1.4	-

WHAT WE DO	10 Minutes		20 Minutes		30 Minutes	
	Number	Per cent	Number	Per cent	Number	Per cent
Economic activity (aged 16-74)						
Economically active	3,240	68.4	7,451	70.4	18,513	69.7
Full-time employee	1,616	34.1	3,709	35.0	9,338	35.2
Part-time employee	730	15.4	1,705	16.1	4,015	15.1
Self-employed	662	14.0	1,517	14.3	3,875	14.6
Unemployed	154	3.2	319	3.0	744	2.8
Full-time student	78	1.6	201	1.9	541	2.0
Economically inactive	1,500	31.6	3,139	29.6	8,048	30.3
Industry (aged 16-74 in employment)	Number	Per cent	Number	Per cent	Number	Per cent
Agriculture, forestry & fishing	168	5.5	369	5.2	797	4.5
Mining & quarrying	13	0.4	35	0.5	70	0.4
Manufacturing	362	11.8	666	9.4	1,432	8.1
Elec, gas, steam & air conditioning supply; Water supply; sewerage	38	1.2	84	1.2	178	1.0
Construction	261	8.5	582	8.2	1,315	7.4
Whsale & ret trade; repair motor vehicles...	430	14.0	999	14.1	2,451	13.8
Transport & Storage	221	7.2	368	5.2	752	4.2
Accommodation & Food Svc Activities	269	8.8	502	7.1	1,143	6.5
Information & Communication	43	1.4	142	2.0	437	2.5
Financial & Insurance Activities	35	1.1	115	1.6	360	2.0
Real Estate; Professional, Scientific & Technical; Admin. & Support Svc.	298	9.7	780	11.0	2,208	12.5
Pub Admin & Defence; Compulsory Social Security	133	4.3	344	4.8	887	5.0
Education	241	7.8	730	10.3	1,922	10.9
Human Health & Social Work	378	12.3	948	13.3	2,647	15.0
Other	182	5.9	443	6.2	1,098	6.2
Occupation (aged 16-74 in employment)	Number	Per cent	Number	Per cent	Number	Per cent
Managers, Directors and Senior Officials	314	10.2	791	11.1	2,260	12.8
Professional Occupations	365	11.9	1,128	15.9	3,513	19.9
Associate Professional and Technical Occupations	249	8.1	706	9.9	1,904	10.8
Administrative and Secretarial Occupations	246	8.0	625	8.8	1,499	8.5
Skilled Trades Occupations	584	19.0	1,177	16.6	2,548	14.4
Caring, Leisure and Other Service Occupations	335	10.9	725	10.2	1,761	10.0
Sales and Customer Service Occupations	225	7.3	514	7.2	1,212	6.8
Process, Plant and Machine Operatives	373	12.1	664	9.3	1,249	7.1
Elementary Occupations	381	12.4	777	10.9	1,751	9.9
Socio-Economic Classification (aged 16-74 in employment)	Number	Per cent	Number	Per cent	Number	Per cent
Higher Managerial, Admin & Prof Occupations	365	7.7	1,122	10.6	3,461	13.0
Lower Managerial, Admin & Prof Occupations	888	18.7	2,282	21.5	6,380	24.0
Intermediate Occupations	475	10.0	1,092	10.3	2,760	10.4
Small Employers & Own Account Workers	681	14.4	1,504	14.2	3,661	13.8
Lower Supervisory & Technical Occupations	467	9.9	870	8.2	1,875	7.1
Semi-Routine Occupations	814	17.2	1,649	15.6	3,652	13.7
Routine Occupations	684	14.4	1,198	11.3	2,463	9.3
Never Worked and Long-Term Unemployed	160	3.4	318	3.0	797	3.0
Not Classified	206	4.3	555	5.2	1,512	5.7
Highest Level of Qualification (aged 16+)	Number	Per cent	Number	Per cent	Number	Per cent
No qualifications	1,351	25.2	2,662	22.2	6,237	20.4
Level 1 qualifications	809	15.1	1,555	13.0	3,520	11.5
Level 2 qualifications	851	15.9	1,813	15.1	4,514	14.8
Apprenticeship	248	4.6	487	4.1	1,124	3.7
Level 3 qualifications	607	11.3	1,414	11.8	3,446	11.3
Level 4 qualifications and above	1,231	23.0	3,593	30.0	10,678	34.9
Other qualifications	258	4.8	461	3.8	1,078	3.5

This fact sheet relates to people living within a 10, 20 and 30 minute drive time of Hexham.

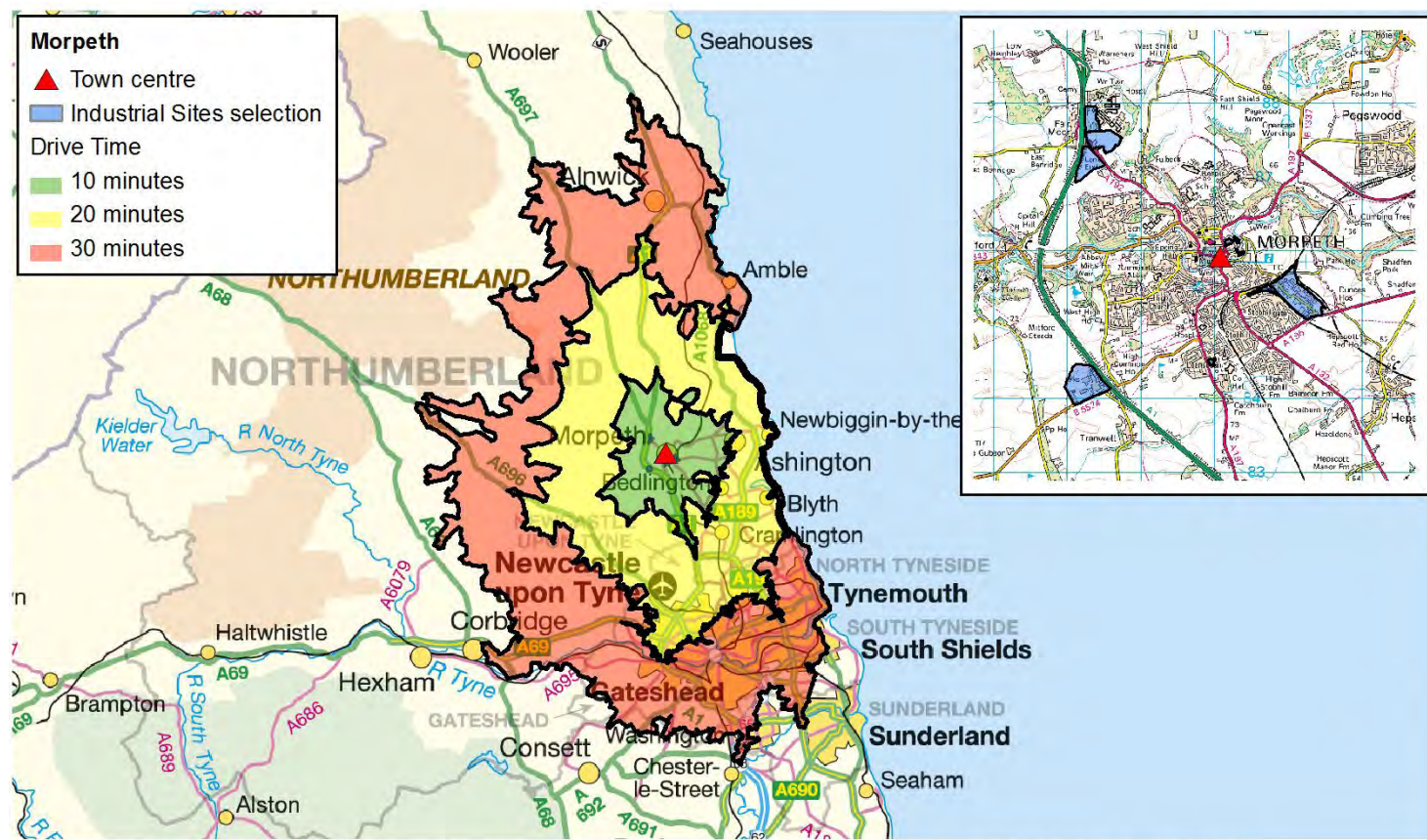


Published September 2013. Scale: 1:750,000 © Crown Copyright. All rights reserved. Northumberland County Council - OS Licence No. 100049048. Road network and journey time data provided by the Department for Transport and Trafficmaster.

WHO WE ARE	10 Minutes		20 Minutes		30 Minutes	
Key Population Statistics (all usual residents)	Number	Per cent	Number	Per cent	Number	Per cent
All People	18,467	-	51,475	-	418,663	-
Males	8,832	47.8	24,978	48.5	207,039	49.5
Females	9,635	52.2	26,497	51.5	211,624	50.5
16 – 64 years	11,159	60.4	31,880	61.9	276,092	65.9
16 – 24	1,794	9.7	4,875	9.5	62,380	14.9
25 - 44	3,659	19.8	10,787	21.0	106,708	25.5
45 – 64	5,706	30.9	16,218	31.5	107,004	25.6
65 -74 years	2,126	11.5	5,728	11.1	36,450	8.7
Number of people per hectare	1.5	-	0.6	-	2.1	-
HOW WE LIVE	10 Minutes		20 Minutes		30 Minutes	
Households (all household spaces)	Number	Per cent	Number	Per cent	Number	Per cent
All Households	8,072	94.8	21,960	95.0	178,063	95.6
Average Household size	2.2	-	2.3	-	2.3	-
Household by Tenure (all households)	Number	Per cent	Number	Per cent	Number	Per cent
Owned outright	3,208	39.7	8,239	37.5	50,267	28.2
Owned with a mortgage or loan/shared ownership	2,372	29.4	7,137	32.5	55,563	31.2
Social rented	1,207	15.0	3,209	14.6	41,109	23.1
Private rented including living rent free	1,285	15.9	3,375	15.4	31,124	17.5
Car or Van Availability (all households)	Number	Per cent	Number	Per cent	Number	Per cent
No cars or vans in household	1,604	19.9	3,882	17.7	58,616	32.9
1 car or van in household	3,609	44.7	9,338	42.5	72,959	41.0
2 or more cars or vans in household	2,859	35.4	8,740	39.8	46,488	26.1
Average number of cars or vans per household	1.3	-	1.4	-	1.0	-

WHAT WE DO	10 Minutes		20 Minutes		30 Minutes	
	Number	Per cent	Number	Per cent	Number	Per cent
Economic activity (aged 16-74)						
Economically active	9,135	68.8	26,373	70.1	204,342	65.4
Full-time employee	4,811	36.2	13,990	37.2	110,940	35.5
Part-time employee	2,010	15.1	5,615	14.9	41,384	13.2
Self-employed	1,613	12.1	4,806	12.8	24,042	7.7
Unemployed	398	3.0	1,116	3.0	13,576	4.3
Full-time student	303	2.3	846	2.2	14,400	4.6
Economically inactive	4,150	31.2	11,235	29.9	108,200	34.6
Industry (aged 16-74 in employment)	Number	Per cent	Number	Per cent	Number	Per cent
Agriculture, forestry & fishing	146	1.7	759	3.0	1,669	0.9
Mining & quarrying	34	0.4	84	0.3	432	0.2
Manufacturing	631	7.3	1,905	7.6	15,565	8.3
Elec, gas, steam & air conditioning supply; Water supply; sewerage	80	0.9	257	1.0	2,143	1.1
Construction	589	6.8	1,867	7.4	13,246	7.1
Whsale & ret trade; repair motor vehicles...	1,300	14.9	3,430	13.7	28,512	15.2
Transport & Storage	313	3.6	1,010	4.0	8,899	4.8
Accommodation & Food Svc Activities	530	6.1	1,456	5.8	13,250	7.1
Information & Communication	246	2.8	753	3.0	6,108	3.3
Financial & Insurance Activities	221	2.5	595	2.4	5,574	3.0
Real Estate; Professional, Scientific & Technical; Admin. & Support Svc.	1,144	13.2	3,131	12.5	21,822	11.7
Pub Admin & Defence; Compulsory Social Security	468	5.4	1,664	6.6	13,485	7.2
Education	1,040	12.0	2,823	11.2	18,853	10.1
Human Health & Social Work	1,427	16.4	3,952	15.7	28,251	15.1
Other	529	6.1	1,431	5.7	9,320	5.0
Occupation (aged 16-74 in employment)	Number	Per cent	Number	Per cent	Number	Per cent
Managers, Directors and Senior Officials	1,150	13.2	3,168	12.6	17,834	9.5
Professional Occupations	1,952	22.4	5,289	21.1	34,745	18.6
Associate Professional and Technical Occupations	1,040	12.0	2,999	11.9	21,065	11.3
Administrative and Secretarial Occupations	745	8.6	2,387	9.5	20,837	11.1
Skilled Trades Occupations	950	10.9	3,124	12.4	20,388	10.9
Caring, Leisure and Other Service Occupations	886	10.2	2,475	9.9	17,790	9.5
Sales and Customer Service Occupations	653	7.5	1,804	7.2	19,157	10.2
Process, Plant and Machine Operatives	481	5.5	1,596	6.4	13,445	7.2
Elementary Occupations	841	9.7	2,275	9.1	21,868	11.7
Socio-Economic Classification (aged 16-74 in employment)	Number	Per cent	Number	Per cent	Number	Per cent
Higher Managerial, Admin & Prof Occupations	1,954	14.7	5,041	13.4	30,149	9.6
Lower Managerial, Admin & Prof Occupations	3,376	25.4	9,388	25.0	59,115	18.9
Intermediate Occupations	1,428	10.7	4,426	11.8	36,836	11.8
Small Employers & Own Account Workers	1,469	11.1	4,465	11.9	23,157	7.4
Lower Supervisory & Technical Occupations	829	6.2	2,527	6.7	21,069	6.7
Semi-Routine Occupations	1,791	13.5	4,979	13.2	45,042	14.4
Routine Occupations	1,139	8.6	3,363	8.9	35,693	11.4
Never Worked and Long-Term Unemployed	430	3.2	1,177	3.1	18,432	5.9
Not Classified	869	6.5	2,242	6.0	43,049	13.8
Highest Level of Qualification (aged 16+)	Number	Per cent	Number	Per cent	Number	Per cent
No qualifications	2,960	19.1	8,303	19.3	80,599	23.3
Level 1 qualifications	1,643	10.6	4,893	11.4	42,545	12.3
Level 2 qualifications	2,296	14.8	6,539	15.2	49,305	14.2
Apprenticeship	522	3.4	1,688	3.9	13,737	4.0
Level 3 qualifications	1,725	11.1	4,919	11.5	49,892	14.4
Level 4 qualifications and above	5,895	38.0	15,138	35.3	94,123	27.2
Other qualifications	484	3.1	1,440	3.4	16,057	4.6

This fact sheet relates to people living within a 10, 20 and 30 minute drive time of Morpeth.

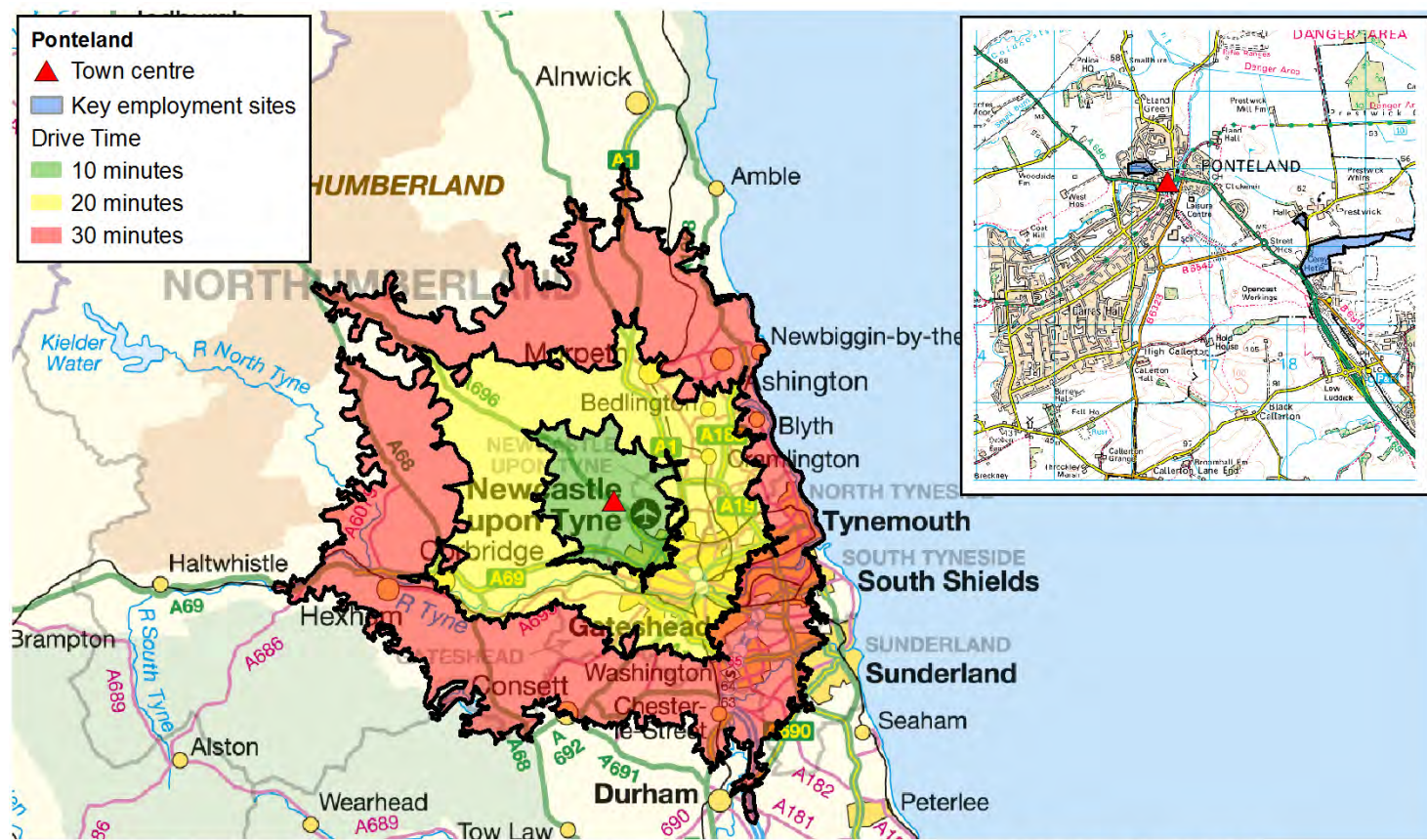


Published September 2013. Scale: 1:800,000 © Crown Copyright. All rights reserved. Northumberland County Council - OS Licence No. 100049048. Road network and journey time data provided by the Department for Transport and Trafficmaster.

WHO WE ARE	10 Minutes		20 Minutes		30 Minutes	
Key Population Statistics (all usual residents)	Number	Per cent	Number	Per cent	Number	Per cent
All People	37,599	-	345,342	-	1,030,006	-
Males	18,208	48.4	167,750	48.6	504,990	49.0
Females	19,391	51.6	177,592	51.4	525,016	51.0
16 – 64 years	23,122	61.5	220,781	63.9	676,414	65.7
16 – 24	3,328	8.9	36,042	10.4	133,924	13.0
25 - 44	8,477	22.5	88,019	25.5	268,942	26.1
45 – 64	11,317	30.1	96,720	28.0	273,548	26.6
65 -74 years	4,059	10.8	32,095	9.3	90,321	8.8
Number of people per hectare	1.9	-	4.4	-	5.5	-
HOW WE LIVE	10 Minutes		20 Minutes		30 Minutes	
Households (all household spaces)	Number	Per cent	Number	Per cent	Number	Per cent
All Households	16,623	96.5	150,128	96.6	451,515	96.1
Average Household size	2.2	-	2.3	-	2.2	-
Household by Tenure (all households)	Number	Per cent	Number	Per cent	Number	Per cent
Owned outright	5,864	35.3	43,658	29.1	119,095	26.4
Owned with a mortgage or loan/shared ownership	5,889	35.4	53,745	35.8	147,984	32.8
Social rented	2,740	16.5	34,208	22.8	116,837	25.9
Private rented including living rent free	2,130	12.8	18,517	12.3	67,599	15.0
Car or Van Availability (all households)	Number	Per cent	Number	Per cent	Number	Per cent
No cars or vans in household	3,562	21.4	42,311	28.2	153,978	34.1
1 car or van in household	7,171	43.1	66,066	44.0	190,030	42.1
2 or more cars or vans in household	5,890	35.4	41,751	27.8	107,507	23.8
Average number of cars or vans per household	1.2	-	1.1	-	1.0	-

WHAT WE DO	10 Minutes		20 Minutes		30 Minutes	
	Number	Per cent	Number	Per cent	Number	Per cent
Economic activity (aged 16-74)						
Economically active	18,461	67.9	171,964	68.0	512,423	66.8
Full-time employee	10,588	39.0	98,773	39.1	288,791	37.7
Part-time employee	3,821	14.1	36,676	14.5	106,029	13.8
Self-employed	2,323	8.5	17,400	6.9	49,443	6.4
Unemployed	1,125	4.1	12,506	4.9	39,350	5.1
Full-time student	604	2.2	6,609	2.6	28,810	3.8
Economically inactive	8,720	32.1	80,912	32.0	254,312	33.2
Industry (aged 16-74 in employment)	Number	Per cent	Number	Per cent	Number	Per cent
Agriculture, forestry & fishing	221	1.3	800	0.5	1,927	0.4
Mining & quarrying	88	0.5	675	0.4	1,723	0.4
Manufacturing	1,464	8.5	13,983	8.9	41,438	8.9
Elec, gas, steam & air conditioning supply; Water supply; sewerage	242	1.4	1,975	1.3	5,982	1.3
Construction	1,190	6.9	12,389	7.8	34,646	7.4
Whsale & ret trade; repair motor vehicles...	2,330	13.5	23,535	14.9	70,635	15.2
Transport & Storage	646	3.7	7,447	4.7	21,929	4.7
Accommodation & Food Svc Activities	834	4.8	8,609	5.4	28,591	6.1
Information & Communication	422	2.4	4,990	3.2	15,426	3.3
Financial & Insurance Activities	419	2.4	5,010	3.2	14,016	3.0
Real Estate; Professional, Scientific & Technical; Admin. & Support Svc.	1,784	10.4	16,713	10.6	51,046	11.0
Pub Admin & Defence; Compulsory Social Security	1,809	10.5	15,385	9.7	42,374	9.1
Education	1,779	10.3	14,279	9.0	44,326	9.5
Human Health & Social Work	3,214	18.6	25,215	16.0	70,255	15.1
Other	794	4.6	6,962	4.4	21,592	4.6
Occupation (aged 16-74 in employment)	Number	Per cent	Number	Per cent	Number	Per cent
Managers, Directors and Senior Officials	1,876	10.9	13,977	8.8	39,896	8.6
Professional Occupations	3,496	20.3	25,763	16.3	77,518	16.6
Associate Professional and Technical Occupations	2,157	12.5	17,991	11.4	53,246	11.4
Administrative and Secretarial Occupations	1,964	11.4	20,847	13.2	59,718	12.8
Skilled Trades Occupations	1,835	10.6	17,766	11.2	51,023	11.0
Caring, Leisure and Other Service Occupations	1,842	10.7	15,929	10.1	45,015	9.7
Sales and Customer Service Occupations	1,329	7.7	16,161	10.2	49,527	10.6
Process, Plant and Machine Operatives	1,077	6.2	12,009	7.6	35,240	7.6
Elementary Occupations	1,660	9.6	17,524	11.1	54,723	11.7
Socio-Economic Classification (aged 16-74 in employment)	Number	Per cent	Number	Per cent	Number	Per cent
Higher Managerial, Admin & Prof Occupations	2,965	10.9	22,222	8.8	64,718	8.4
Lower Managerial, Admin & Prof Occupations	6,687	24.6	50,236	19.9	144,209	18.8
Intermediate Occupations	3,775	13.9	36,341	14.4	103,437	13.5
Small Employers & Own Account Workers	2,288	8.4	17,862	7.1	50,083	6.5
Lower Supervisory & Technical Occupations	2,024	7.4	19,996	7.9	57,082	7.4
Semi-Routine Occupations	3,718	13.7	40,618	16.1	119,652	15.6
Routine Occupations	2,959	10.9	34,048	13.5	101,557	13.2
Never Worked and Long-Term Unemployed	1,205	4.4	14,836	5.9	47,869	6.2
Not Classified	1,560	5.7	16,717	6.6	78,128	10.2
Highest Level of Qualification (aged 16+)	Number	Per cent	Number	Per cent	Number	Per cent
No qualifications	7,040	22.6	72,065	25.6	213,785	25.2
Level 1 qualifications	3,736	12.0	40,213	14.3	114,819	13.5
Level 2 qualifications	4,842	15.5	45,434	16.1	129,340	15.2
Apprenticeship	1,200	3.8	13,052	4.6	39,678	4.7
Level 3 qualifications	3,796	12.2	33,614	11.9	113,348	13.3
Level 4 qualifications and above	9,506	30.5	66,294	23.5	203,239	23.9
Other qualifications	1,089	3.5	10,870	3.9	34,977	4.1

This fact sheet relates to people living within a 10, 20 and 30 minute drive time of Ponteland.

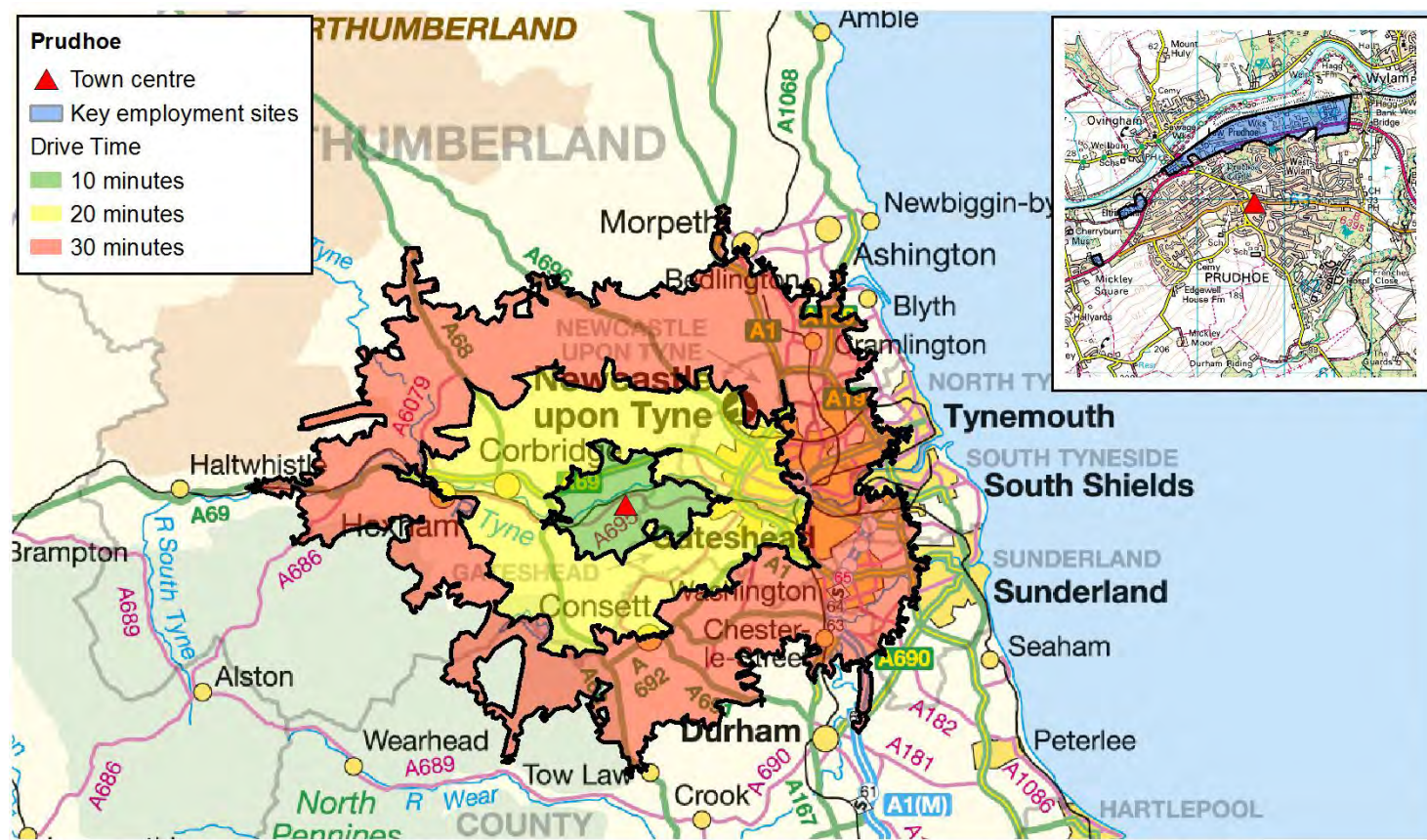


Published September 2013. Scale: 1:750,000 © Crown Copyright. All rights reserved. Northumberland County Council - OS Licence No. 100049048. Road network and journey time data provided by the Department for Transport and Trafficmaster.

WHO WE ARE	10 Minutes		20 Minutes		30 Minutes	
	Number	Per cent	Number	Per cent	Number	Per cent
Key Population Statistics (all usual residents)						
All People	76,202	-	613,176	-	1,228,955	-
Males	36,812	48.3	302,259	49.3	600,944	48.9
Females	39,390	51.7	310,917	50.7	628,011	51.1
16 – 64 years	46,925	61.6	408,560	66.6	804,529	65.5
16 – 24	7,793	10.2	89,875	14.7	155,062	12.6
25 - 44	17,921	23.5	162,653	26.5	318,041	25.9
45 – 64	21,211	27.8	156,032	25.4	331,426	27.0
65 -74 years	7,670	10.1	51,185	8.3	109,861	8.9
Number of people per hectare	3.8	-	7.3	-	5.7	-
HOW WE LIVE						
Households (all household spaces)						
All Households	32,435	97.3	264,052	96.3	539,000	96.3
Average Household size	2.3	-	2.3	-	2.2	-
Household by Tenure (all households)						
Owned outright	10,578	32.6	68,963	26.1	145,159	26.9
Owned with a mortgage or loan/shared ownership	11,238	34.6	85,450	32.4	180,084	33.4
Social rented	7,460	23.0	66,792	25.3	136,658	25.4
Private rented including living rent free	3,159	9.7	42,847	16.2	77,099	14.3
Car or Van Availability (all households)						
No cars or vans in household	9,586	29.6	90,590	34.3	179,361	33.3
1 car or van in household	13,719	42.3	109,956	41.6	226,668	42.1
2 or more cars or vans in household	9,130	28.1	63,506	24.1	132,971	24.7
Average number of cars or vans per household	1.1	-	1.0	-	1.0	-

WHAT WE DO	10 Minutes		20 Minutes		30 Minutes	
	Number	Per cent	Number	Per cent	Number	Per cent
Economic activity (aged 16-74)						
Economically active	36,569	67.0	304,962	66.3	612,415	67.0
Full-time employee	20,297	37.2	170,843	37.2	347,290	38.0
Part-time employee	8,115	14.9	61,278	13.3	126,870	13.9
Self-employed	4,123	7.6	30,391	6.6	59,283	6.5
Unemployed	2,412	4.4	21,517	4.7	46,352	5.1
Full-time student	1,622	3.0	20,933	4.6	32,620	3.6
Economically inactive	18,026	33.0	154,783	33.7	301,975	33.0
Industry (aged 16-74 in employment)	Number	Per cent	Number	Per cent	Number	Per cent
Agriculture, forestry & fishing	204	0.6	961	0.3	2,160	0.4
Mining & quarrying	81	0.2	708	0.3	1,935	0.3
Manufacturing	2,472	7.3	22,415	8.1	53,523	9.6
Elec, gas, steam & air conditioning supply; Water supply; sewerage	396	1.2	3,355	1.2	7,885	1.4
Construction	2,837	8.4	19,602	7.0	41,544	7.4
Whsale & ret trade; repair motor vehicles...	5,445	16.1	42,183	15.2	85,979	15.4
Transport & Storage	1,972	5.8	12,935	4.7	26,752	4.8
Accommodation & Food Svc Activities	2,016	6.0	18,529	6.7	33,031	5.9
Information & Communication	1,085	3.2	10,080	3.6	17,554	3.1
Financial & Insurance Activities	1,233	3.6	8,918	3.2	16,954	3.0
Real Estate; Professional, Scientific & Technical; Admin. & Support Svc.	3,796	11.2	32,210	11.6	60,453	10.8
Pub Admin & Defence; Compulsory Social Security	2,799	8.3	23,759	8.5	49,405	8.9
Education	3,051	9.0	27,645	9.9	52,795	9.5
Human Health & Social Work	4,894	14.5	41,653	15.0	82,416	14.8
Other	1,566	4.6	13,177	4.7	25,601	4.6
Occupation (aged 16-74 in employment)	Number	Per cent	Number	Per cent	Number	Per cent
Managers, Directors and Senior Officials	3,201	9.5	24,386	8.8	48,402	8.7
Professional Occupations	5,334	15.8	51,186	18.4	90,469	16.2
Associate Professional and Technical Occupations	3,627	10.7	32,323	11.6	62,760	11.2
Administrative and Secretarial Occupations	4,381	12.9	35,067	12.6	71,750	12.9
Skilled Trades Occupations	4,023	11.9	28,539	10.3	61,583	11.0
Caring, Leisure and Other Service Occupations	3,293	9.7	25,376	9.1	53,660	9.6
Sales and Customer Service Occupations	3,776	11.2	30,012	10.8	59,270	10.6
Process, Plant and Machine Operatives	2,496	7.4	19,017	6.8	44,545	8.0
Elementary Occupations	3,716	11.0	32,224	11.6	65,548	11.7
Socio-Economic Classification (aged 16-74 in employment)	Number	Per cent	Number	Per cent	Number	Per cent
Higher Managerial, Admin & Prof Occupations	5,038	9.2	43,201	9.4	76,090	8.3
Lower Managerial, Admin & Prof Occupations	10,678	19.6	86,759	18.9	172,188	18.8
Intermediate Occupations	7,836	14.4	59,922	13.0	124,186	13.6
Small Employers & Own Account Workers	4,262	7.8	29,428	6.4	60,313	6.6
Lower Supervisory & Technical Occupations	4,104	7.5	31,530	6.9	69,179	7.6
Semi-Routine Occupations	8,860	16.2	66,402	14.4	145,046	15.9
Routine Occupations	6,821	12.5	55,198	12.0	123,762	13.5
Never Worked and Long-Term Unemployed	3,085	5.7	28,002	6.1	55,941	6.1
Not Classified	3,911	7.2	59,303	12.9	87,685	9.6
Highest Level of Qualification (aged 16+)	Number	Per cent	Number	Per cent	Number	Per cent
No qualifications	16,462	26.6	121,063	23.9	257,605	25.4
Level 1 qualifications	8,712	14.1	64,518	12.7	139,286	13.8
Level 2 qualifications	9,703	15.7	72,905	14.4	156,739	15.5
Apprenticeship	3,054	4.9	21,674	4.3	47,311	4.7
Level 3 qualifications	6,772	10.9	72,364	14.3	132,618	13.1
Level 4 qualifications and above	14,665	23.7	132,360	26.1	238,246	23.5
Other qualifications	2,604	4.2	21,875	4.3	40,756	4.0

This fact sheet relates to people living within a 10, 20 and 30 minute drive time of Prudhoe.



Published September 2013. Scale: 1:650,000 © Crown Copyright. All rights reserved. Northumberland County Council - OS Licence No. 100049048. Road network and journey time data provided by the Department for Transport and Trafficmaster.

WHO WE ARE	10 Minutes		20 Minutes		30 Minutes	
Key Population Statistics (all usual residents)	Number	Per cent	Number	Per cent	Number	Per cent
All People	35,918	-	321,699	-	922,947	-
Males	17,273	48.1	158,363	49.2	452,605	49.0
Females	18,645	51.9	163,336	50.8	470,342	51.0
16 – 64 years	22,743	63.3	206,756	64.3	608,179	65.9
16 – 24	3,390	9.4	37,399	11.6	122,516	13.3
25 - 44	8,545	23.8	84,898	26.4	241,148	26.1
45 – 64	10,808	30.1	84,459	26.3	244,515	26.5
65 -74 years	3,808	10.6	29,066	9.0	81,118	8.8
Number of people per hectare	4.0	-	5.3	-	5.1	-
HOW WE LIVE	10 Minutes		20 Minutes		30 Minutes	
Households (all household spaces)	Number	Per cent	Number	Per cent	Number	Per cent
All Households	15,400	96.7	138,778	96.0	400,902	96.4
Average Household size	2.3	-	2.3	-	2.3	-
Household by Tenure (all households)	Number	Per cent	Number	Per cent	Number	Per cent
Owned outright	5,323	34.6	38,988	28.1	106,624	26.6
Owned with a mortgage or loan/shared ownership	6,063	39.4	44,647	32.2	133,513	33.3
Social rented	2,535	16.5	34,583	24.9	102,098	25.5
Private rented including living rent free	1,479	9.6	20,560	14.8	58,667	14.6
Car or Van Availability (all households)	Number	Per cent	Number	Per cent	Number	Per cent
No cars or vans in household	3,199	20.8	47,327	34.1	133,745	33.4
1 car or van in household	6,687	43.4	56,823	40.9	167,848	41.9
2 or more cars or vans in household	5,514	35.8	34,628	25.0	99,309	24.8
Average number of cars or vans per household	1.3	-	1.0	-	1.0	-

WHAT WE DO	10 Minutes		20 Minutes		30 Minutes	
	Number	Per cent	Number	Per cent	Number	Per cent
Economic activity (aged 16-74)						
Economically active	18,724	70.5	157,397	66.7	460,455	66.8
Full-time employee	10,924	41.1	87,492	37.1	261,356	37.9
Part-time employee	3,980	15.0	33,479	14.2	94,104	13.7
Self-employed	2,292	8.6	17,151	7.3	45,339	6.6
Unemployed	878	3.3	11,502	4.9	32,880	4.8
Full-time student	650	2.4	7,773	3.3	26,776	3.9
Economically inactive	7,827	29.5	78,425	33.3	228,842	33.2
Industry (aged 16-74 in employment)	Number	Per cent	Number	Per cent	Number	Per cent
Agriculture, forestry & fishing	120	0.7	674	0.5	1,769	0.4
Mining & quarrying	40	0.2	312	0.2	1,152	0.3
Manufacturing	1,610	9.1	12,273	8.5	40,659	9.7
Elec, gas, steam & air conditioning supply; Water supply; sewerage	235	1.3	1,774	1.2	5,832	1.4
Construction	1,399	7.9	10,753	7.5	31,044	7.4
Wholesale & retail trade; repair motor vehicles...	2,533	14.3	22,784	15.8	65,790	15.6
Transport & Storage	850	4.8	7,503	5.2	20,374	4.8
Accommodation & Food Svc Activities	844	4.8	9,656	6.7	25,928	6.2
Information & Communication	569	3.2	4,627	3.2	13,411	3.2
Financial & Insurance Activities	502	2.8	4,417	3.1	12,926	3.1
Real Estate; Professional, Scientific & Technical; Admin. & Support Svc.	1,966	11.1	16,297	11.3	46,275	11.0
Pub Admin & Defence; Compulsory Social Security	1,248	7.0	10,751	7.5	35,903	8.5
Education	1,914	10.8	13,853	9.6	40,037	9.5
Human Health & Social Work	3,025	17.1	21,481	14.9	60,486	14.4
Other	868	4.9	6,849	4.8	19,304	4.6
Occupation (aged 16-74 in employment)	Number	Per cent	Number	Per cent	Number	Per cent
Managers, Directors and Senior Officials	1,833	10.3	13,159	9.1	36,626	8.7
Professional Occupations	3,559	20.1	23,865	16.6	69,416	16.5
Associate Professional and Technical Occupations	2,144	12.1	16,070	11.2	46,907	11.1
Administrative and Secretarial Occupations	1,979	11.2	16,903	11.7	53,826	12.8
Skilled Trades Occupations	1,866	10.5	16,253	11.3	46,308	11.0
Caring, Leisure and Other Service Occupations	1,895	10.7	14,404	10.0	39,155	9.3
Sales and Customer Service Occupations	1,545	8.7	15,418	10.7	44,911	10.7
Process, Plant and Machine Operatives	1,316	7.4	10,956	7.6	33,717	8.0
Elementary Occupations	1,586	8.9	16,976	11.8	50,024	11.9
Socio-Economic Classification (aged 16-74 in employment)	Number	Per cent	Number	Per cent	Number	Per cent
Higher Managerial, Admin & Prof Occupations	2,967	11.2	20,280	8.6	58,738	8.5
Lower Managerial, Admin & Prof Occupations	6,505	24.5	45,431	19.3	128,130	18.6
Intermediate Occupations	3,655	13.8	30,450	12.9	91,824	13.3
Small Employers & Own Account Workers	2,200	8.3	17,289	7.3	45,612	6.6
Lower Supervisory & Technical Occupations	2,042	7.7	17,538	7.4	51,155	7.4
Semi-Routine Occupations	4,013	15.1	37,726	16.0	107,860	15.6
Routine Occupations	2,793	10.5	30,042	12.7	91,340	13.3
Never Worked and Long-Term Unemployed	850	3.2	15,911	6.7	40,913	5.9
Not Classified	1,526	5.7	21,155	9.0	73,725	10.7
Highest Level of Qualification (aged 16+)	Number	Per cent	Number	Per cent	Number	Per cent
No qualifications	5,949	20.1	67,444	25.7	191,412	25.2
Level 1 qualifications	3,700	12.5	35,456	13.5	103,221	13.6
Level 2 qualifications	4,727	16.0	39,420	15.0	115,127	15.1
Apprenticeship	1,486	5.0	11,630	4.4	34,769	4.6
Level 3 qualifications	3,561	12.0	30,247	11.5	102,447	13.5
Level 4 qualifications and above	9,085	30.7	65,652	25.0	182,596	24.0
Other qualifications	1,066	3.6	12,351	4.7	31,469	4.1