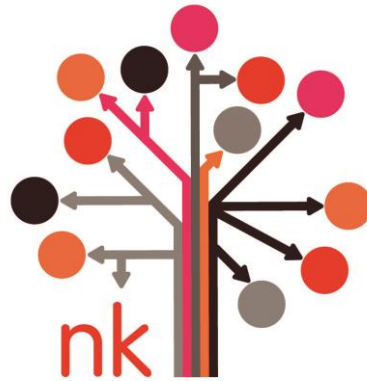


# Northumberland Knowledge



Northumberland population

Older people - age profile

June 2017

## Table of Contents

1.0 Summary & Key Figures .....	3
2.0 Introduction & Data Sources .....	3
3.0 Northumberland's Current Age Profile .....	4
4.0 Past Trends .....	5
5.0 Population projections .....	9
6.0 References .....	11

## Table of Figures

1 Population pyramids by age band	4
2 Population by selected age bands	4
3 Northumberland - Internal migration by sex and five-year age group, year ending June 2016	5
4 Older people by ethnicity	5
5 Past change in population by age group	5
6 Population change over time	6
7 Change in older and younger population by year	6
8 Percentage of younger and older population by year	6
9 Deaths (numbers and rates) by area of usual residence 2015 registrations	7
10 % residents aged 65 and over by LSOA 2014 (map)	8
11 2014-based Population Projections, 2014-2039	9
12 2014-based Population Projections, 2014-2039	9
13 Old age dependancy ratio	9
14 Population projections 2014 SNPP	10
15 People aged 65 and over living alone, by age and gender, projected to 2030	10
16 People aged 65 and over living in a care home with or without nursing by local authority / non-local authority, by age, projected to 2030	10
17 People aged 65 and over with a limiting long-term illness, by age, projected to 2030	11

## 1.0 Summary & Key Figures

### Current profile

The latest population data by age for Northumberland is from the ONS 2016 Mid-Year Estimates. They show that the Northumberland population was 316,002; 154,180 males and 161,822 females. 74,515 residents are aged 65 or over, which is an increase of 1,794 from the 2015 MYE.

16.4% of the population are aged 0-15, 60.0% are aged 16-64, and 23.6% are aged 65 and over.

### Past trends

- The mid-year population of Northumberland in 2011<sup>1</sup> was estimated to be 316,300, a 2.9% increase on the 2001 Census-based mid-year estimate. In the previous 10 year period (1991 to 2001), the population increased by 1,900 (0.6%). By 2016, the population of Northumberland was estimated to be 316,002.
- Life expectancy at birth in Northumberland since 2000 has increased from 75.8 to 79.4 years for males and 80.4 to 82.5 years for females
- The crude live birth rate in Northumberland has dropped from 9.4 to 9.0 over a five year period from 2011 to 2015.

### Future change

- ONS produces population projections at a national and sub-national level generally every two years. The latest projections are based on 2014
- If current demographic trends continue, in 2039 there would be 651 people of or above SPA (State Pension Age) for every 1,000 people of working age, compared to a figure of 370 in 2015.
- By 2039 the total population is projected to rise to 321,764, an increase of 1.8% since 2014.
- Over the same time period the population aged 65 and over is expected to rise by 51.9% from 71,144 to 108,105.

## 2.0 Introduction & Data Sources

The report provides an analysis of the current age profile and past trends of the population aged 65 and over in Northumberland. There are a number of data sources which have been used in the analysis:

**2001 and 2011 Censuses** A census is carried out in the UK every 10 years in order to “provide information on housing and population that government needs to develop policies, and to plan and run public services such as health and education”, (ONS).

**Mid-Year Population Estimates** ONS produce annual mid-year population estimates (population at 30 June each year) which provide the most accurate regularly updated estimate of Northumberland’s population. Mid-year estimates use the Census population estimates as a base and apply migration, birth rates and death rates to give an annual estimate of population for an area.

**Population Projections** ONS produces population projections at a national and sub-national level generally every two years.

**Poppi** The Institute of Public Care provide data on the projected number of older people, including future needs and health care

---

<sup>1</sup> mid-year population estimate based on the 2011 Census

### 3.0 Northumberland's Current Age Profile

The latest ONS Mid-Year Estimates (MYE) were published in 2016 and estimated the population of Northumberland to be 316,002; 154,180 males and 161,822 females.

**Figure 1: Population pyramids by age band**

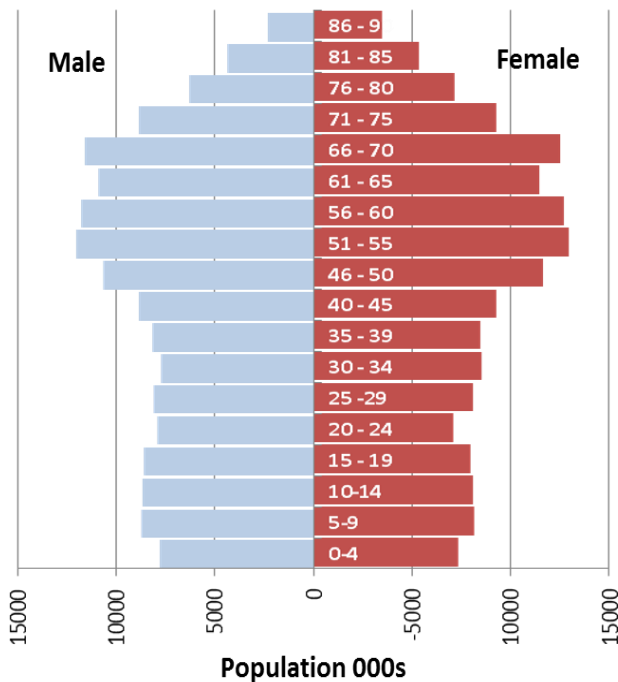


Figure 1 shows the 2016 age profiles for Northumberland based on the ONS MYE, and shows that in Northumberland there is a larger number of residents in the 45 to 64 age groups than any other.

Source: ONS 2015 MYE (© Crown Copyright)

Northumberland has a lower proportion of the population under 16, and a substantially higher 65+ population proportion, than both the North East region and England as a whole. Figure 2 shows that 23.1% of the population in Northumberland are aged 65 or over, compared to 19% in the North East region and 17.7% in England. 5.8% of Northumberland residents are in the 80+ age group, compared to 4.9% in the North East and 4.8% in England.

**Figure 2: Population by selected age bands**

	Northumberland				North East	England
	Total		Female	Male	%	%
	Number	%	%	%		
<b>Total population</b>	<b>316,002</b>	<b>100</b>	<b>161,822</b>	<b>154,180</b>		
<b>Total 65 and over</b>	<b>74,515</b>	<b>23.6</b>	<b>40,129</b>	<b>34,386</b>	<b>19.1</b>	<b>17.9</b>

	Northumberland		North East	England
	Number	%	%	%
65-69	24,124	7.6	6.1	5.5
70-74	18,165	5.7	4.5	4.3
75-79	13,442	4.2	3.6	3.3
80-84	9,714	3.1	2.6	2.4
85-89	5,768	1.8	1.5	1.5
90+	3,302	1.0	0.8	0.9

Source: ONS 2016 Mid-Year Estimates (© Crown Copyright)

### Migration

Internal migration data show that 1090 persons aged 65 and over, moved into Northumberland from other parts of the UK in 2016, and 820 moved out giving a net migration figure of 280. Over 65s accounted for 11% of internal migrants to the county.

**Figure 3: Northumberland - Internal migration by sex and five-year age group, year ending June 2016**

Age	All moves			Males			Females		
	Inflow	Outflow	Net	Inflow	Outflow	Net	Inflow	Outflow	Net
<b>Total migration</b>	9860	8690	1200	4580	4250	340	5270	4410	860
Total aged 65 and over	1090	820	280	490	380	100	610	420	180
65-69	430	280	150	220	150	70	210	130	80
70-74	220	210	10	120	90	20	110	110	-10
75-79	140	110	30	60	60	10	70	50	30
80-84	100	90	10	30	40	-10	70	50	10
85-89	100	80	30	40	30	0	70	40	30
90+	100	50	50	20	10	10	80	40	40

Source: Office for National Statistics: Migration Statistics Unit (Rounded to nearest 10)

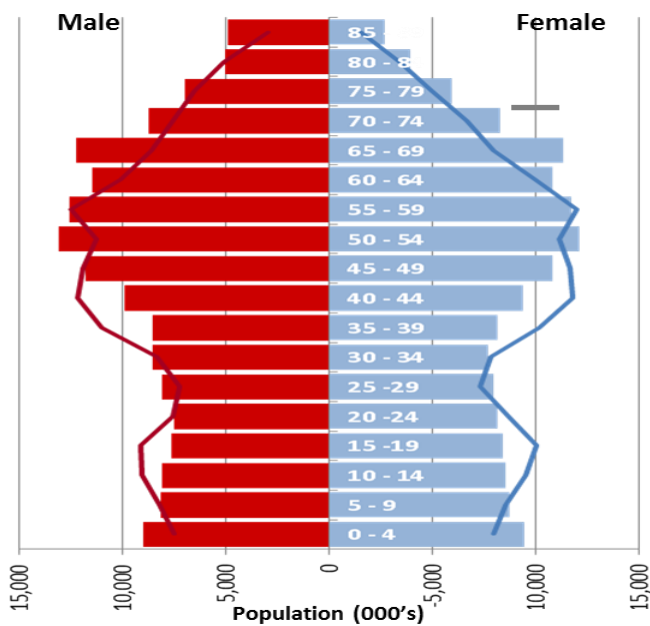
**Ethnicity**

Data based on the 2011 Census shows that 99.6% of residents aged 65 and over in Northumberland, classed themselves as White.

**Figure 4 : Older people by ethnicity**

% Population	Northumberland	North East	England
White	99.6	99.0	95.3
Mixed/multiple ethnic group	0.1	0.2	0.4
Asian/Asian British	0.2	0.7	2.7
Black/African/Caribbean/Black British	0.0	0.1	1.3
Other	0.0	0.0	0.0

Source: 2011 Census Persons aged 65 and over (© Crown Copyright)



**4.0 Past Trends**

**Figure 5: Past change in population by age group**

Figure 5 shows the change in population age groups over a ten year period to 2016. There has been a reduction in the number of residents in the 5 to 24 age groups, but an increase of those over 60. The number of female residents aged 80 and over has stayed constant, but the number of male residents in the same age groups, has increased over the ten year period. Over the last 10 years, the population of Northumberland has increased by 2.74% from 307,560 to 316,002.

Source: ONS 2006 and 2016 mid-year population estimates (© Crown copyright)

**Figure 6: Population change over time**

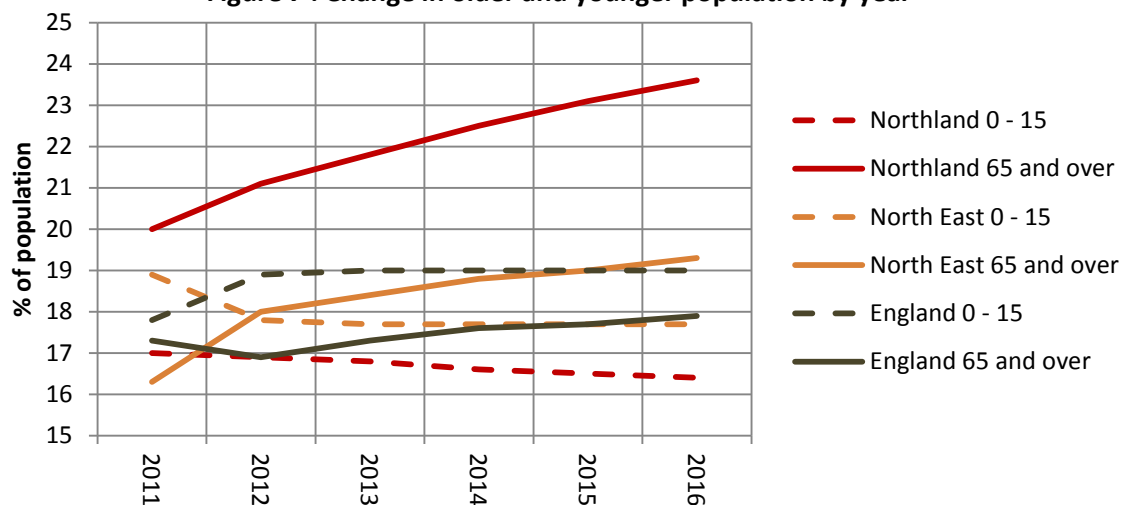
Year	1999-2001 % change	2001-11 % change	2011-16 % change
Northld	0.6	2.8	-0.1
North East	-1.8	2.2	1.6
England	3.3	7.2	4.1

The population in Northumberland has reduced in the last 5 years compared to an increase in the North East and England (figure 4).

Figure 7 illustrates the percentage of the total population aged 0 – 15 and those 65 and over. It shows the change over a five year period and compares Northumberland to the North East and England. The proportion of Northumberland’s population aged 0 –

15 has decreased since 2011, whereas population has increased for those aged 65 and over, illustrating that Northumberland has an ageing population.

**Figure 7 : Change in older and younger population by year**



**Figure 8 : Percentage of younger and older population by year**

Area	Age	2011	2012	2013	2014	2015	2016
Northumberland	0 - 15	17.0	16.9	16.8	16.6	16.5	16.4
	65 and over	20.0	21.1	21.8	22.5	23.1	23.6
North East	0 - 15	18.9	17.8	17.7	17.7	17.7	17.7
	65 and over	16.3	18.0	18.4	18.8	19.0	19.3
England	0 - 15	17.8	18.9	19.0	19.0	19.0	19.0
	65 and over	17.3	16.9	17.3	17.6	17.7	17.9

20% of Northumberland’s 2011 population was aged 65 and over; in 2016 the figure was 23.6%. This 2016 proportion was higher than for both the North East region and England (19.3% and 17.8% respectively).

Source: ONS 2011 to 2016 mid-year estimates

### Life Expectancy

Life expectancy at birth in Northumberland since 2000 has increased for both males and females. In 2000/02 life expectancy for males was 75.8 years and increased to 79.2 years by 2013/15. A similar increase was shown for females from 80.4 years to 82.6 years. These trends are similar for both the North East and England.

## Death rates

The crude death rate for residents in Northumberland in 2015 was 11.3 per 1,000 population which was higher than both the North East and England.

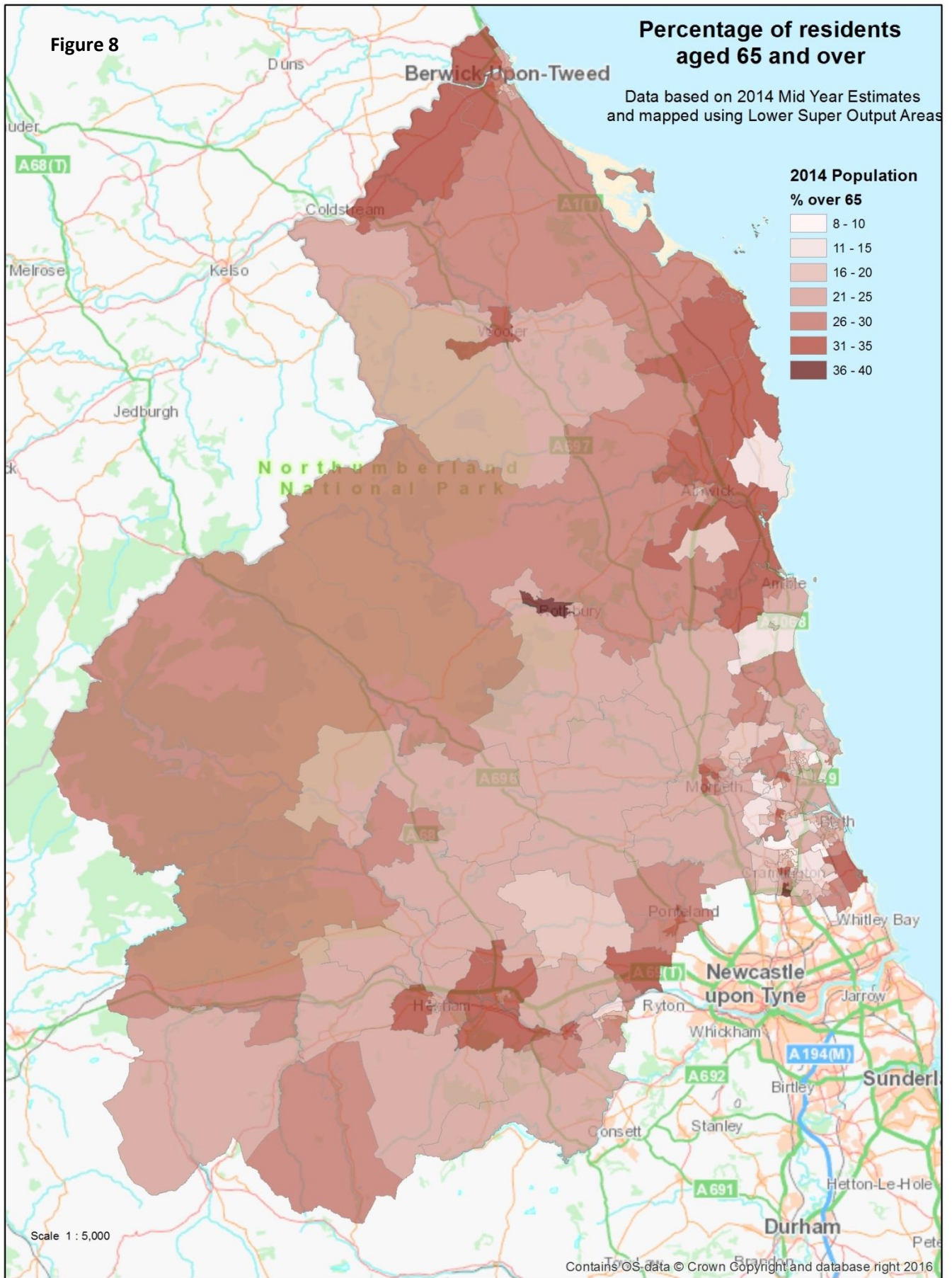
**Figure 9 : Deaths (numbers and rates) by area of usual residence 2015 registrations**

	Deaths (numbers)			Rates			
	All ages			Crude death rate (deaths per 1,000 pop)	Age standardised mortality rate <sup>2</sup>		
	Persons	Males	Females		Persons	Males	Females
Northumberland	3,576	1,701	1,875	11.3	1,016.1	1,136.4	910.5
NORTH EAST	28,075	13,504	14,571	10.7	1,128.7	1,292.7	997.6
ENGLAND	495,309	240,417	254,892	9.0	986.6	1,148.8	858.0

## Small area population

Mid-year estimates for 2014, provided data at a lower super output area (LSOA) level, which enables analysis of age breakdown by smaller geographical areas. Figure 8 shows the percentage of the resident population who are aged 65 years and over.

<sup>2</sup> Age-standardised mortality rates are expressed per 100,000 population, they allow comparisons between populations with different age structures, including between males and females and over time.





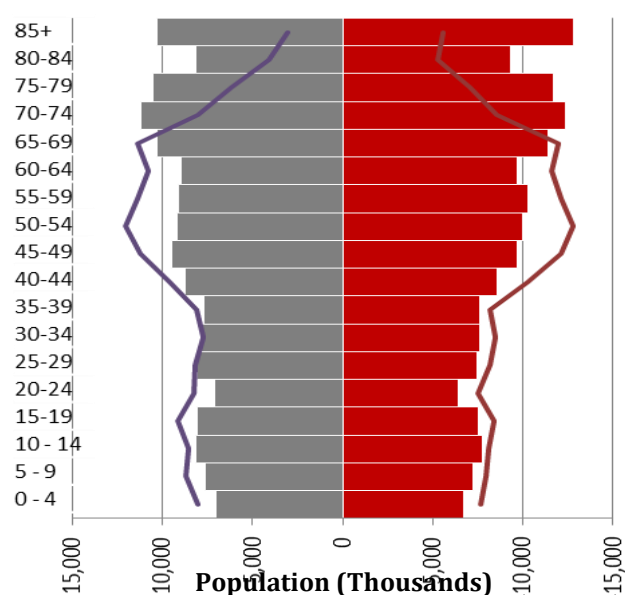
## 5.0 Population projections

### ONS 2014 based population projections

Latest 2014 population projections show the age structure Northumberland is projected to change over the next 25 years. Figure 10 shows an anticipated increase in the proportion of over 65s and lower proportions of people in the younger and middling ages where every age group up to 65 shows a decrease. The over 65 population is expected to account for 33.6% of the total population in Northumberland in 2039, compared to an estimated figure of 22.5% in 2014.

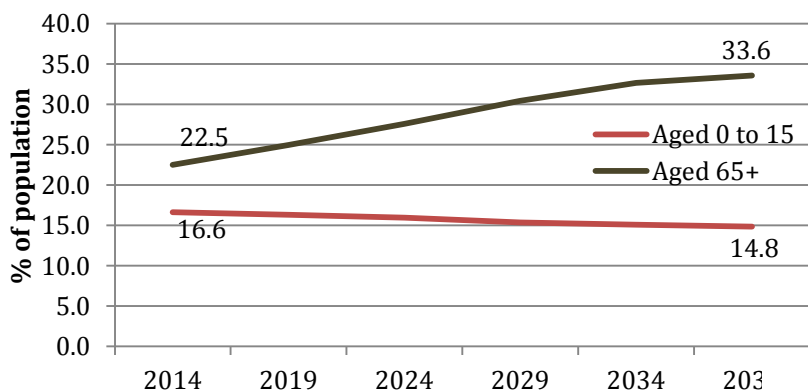
— Male 2014    ■ Male 2039  
— Female 2014    ■ Female 2039

Figure 11: 2014-based Population Projections, 2014-2039



Source: © Crown copyright ONS Data Visualisation Tool, ONS Population Projections Unit (figures rounded to 100)

Figure 12 : Projections by age group



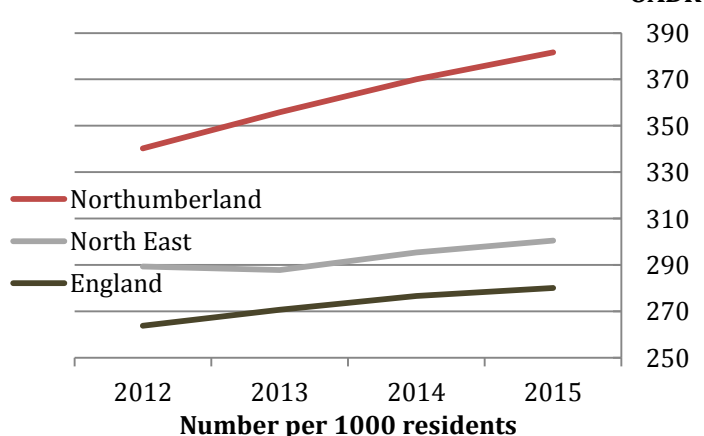
The ageing population is an issue facing the North East and England generally, but in Northumberland the problem is likely to be particularly acute. In 2014 the **percentage difference** between the younger and older age groups was 5.9%, but this is projected to change by 2039 to 18.8%.

### Dependency ratio

The old age dependency ratio (OADR) measures the number of people of State Pension Age (SPA) and over for every 1,000 people of working age (16 to SPA), and provides an idea of the relationship between working and pensioner population. The OADR in Northumberland in 2012 was 340, which rose to 381 by 2015. This was much higher in 2012 than both the North East (289) and England (264), and also in 2015 (301 and 280 respectively).

Source ONS Mid-Year Estimates. Working age population aged 16 to 64

Figure 13 : Old age dependency ratio



In the absence of any increases to SPA, the OADR was projected to reach 487 by 2037 in England. As a result of planned SPA increases taking place between 2010 and 2046 under current legislation, the population projections suggest that, if current demographic trends continue, in 2039 there would be 651 people of or above SPA for every 1,000 people of working age. An approximate calculation using a constant SPA of 65 and over, shows:

**Figure 14 : Population projections 2014 SNPP**

	Northumberland		North East		England	
	2014	2039	2014	2039	2014	2039
Total	315,987	321,764	2,618,710	2,795,865	54,316,618	63,281,523
65 and over	71,144	108,097	522,798	754,917	10,124,854	15,829,260
16 to 64	192,273	165,879	1,661,071	1,598,184	34,515,387	36,824,425
Dependency ratio <sup>3</sup>	370	651.6	314.7	472.4	293.3	429.9

Source ONS Mid-Year Estimates. Working age population aged 16 to 64

## Living arrangements

**People living alone** Rates published in 2014, show that 20% of males and 30% of females aged 65 - 74 live alone, with 34% of males and 61% females aged 75 and over live by themselves.

**Figure 15 : People aged 65 and over living alone, by age and gender, projected to 2030**

		2014	2015	2020	2025	2030
Males	65-74	3,860	3,980	4,240	4,260	4,580
	75 and over	4,522	4,658	5,644	7,174	8,126
Females	65-74	6,120	6,330	6,810	6,870	7,440
	75 and over	10,980	11,224	12,688	15,494	17,446
Total	65-74	9,980	10,310	11,050	11,130	12,020
	75 and over	15,502	15,882	18,332	22,668	25,572

Figures may not sum due to rounding. Crown copyright 2014

**People living in a care homes** The number of people living in care homes is expected to rise from a figure of 2,535 in 2014 to 4,454 in 2030 which is an increase of 75%.

**Figure 16 : People aged 65 and over living in a care home with or without nursing by local authority / non-local authority, by age, projected to 2030**

		2014	2015	2020	2025	2030
LA care home	65-74	15	15	16	17	18
	75-84	11	11	12	15	17
	85 and over	2	2	3	3	4
Non LA care home	65-74	242	248	266	268	290
	75-84	746	763	869	1,088	1,174
	85 and over	1,519	1,571	1,933	2,365	2,952
<b>Total</b>		<b>2,535</b>	<b>2,610</b>	<b>3,100</b>	<b>3,756</b>	<b>4,454</b>

Figures may not sum due to rounding. Crown copyright 2014

**People with limiting long-term illness** The number of people aged 65 and over who's activities are limited a little is predicted to rise by 43% between 2014 and 2030. This percentage figure increases to 94% for those aged 85 and over. There is expected to be a 51% increase in the number of people who's activities are limited a lot over the same period.

<sup>3</sup> Assuming no increase in State Pension Age

**Figure 17 : People aged 65 and over with a limiting long-term illness, by age, projected to 2030**

		2014	2015	2020	2025	2030
activities are limited a little	65-74	9,289	9,545	10,245	10,292	11,132
	75-84	7,000	7,156	8,152	10,205	11,014
	85 and over	2,168	2,242	2,759	3,375	4,213
	Total	18,457	18,943	21,157	23,873	26,359
activities are limited a lot	65-74	6,519	6,699	7,190	7,223	7,813
	75-84	6,286	6,426	7,320	9,164	9,890
	85 and over	3,664	3,789	4,663	5,704	7,120
	Total	16,469	16,914	19,174	22,091	24,823

*Figures may not sum due to rounding. Crown copyright 2014*

## 6.0 References

Censuses 2001 and 2011

ONS data visualisation tool

2014 based sub-national population projections

Interim 2011-based sub-national population projections

Projecting Adult Needs and Service Information (POPPI)

Northumberland small area population projections, Edge Analytics,

Please contact the Digital Team, IT Services within Northumberland County Council for more details.

**Northumberland**

Northumberland County Council

Digital Team

IT Services

Northumberland County Council

County Hall

Morpeth

Northumberland NE61 2EF

Email : [knowledge@northumberland.gov.uk](mailto:knowledge@northumberland.gov.uk)

Website [Knowledge.northumberland.gov.uk](http://Knowledge.northumberland.gov.uk)