



**Northumberland**  
County Council

# **Castle Vale Park and Coronation Park, Berwick upon Tweed Management Plan 2015-2019**



**Northumberland**  
County Council

[www.northumberland.gov.uk](http://www.northumberland.gov.uk)

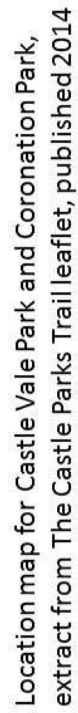


# Castle Vale Park and Coronation Park Management Plan 2015-2019

## Contents

<b>Location Map &amp; Plans</b>	<b>4-5</b>
<b>1. Introduction</b>	<b>6</b>
1.1 Summary of the Plan	6
1.2 About the Parks	6
1.3 A Brief History of the Parks	7
1.4 Parks for People Improvements	8
1.5 Designations	9
1.6 Site Details	9
<b>2. A Vision for the Parks</b>	<b>11</b>
<b>3. A Welcoming Park</b>	<b>12</b>
3.1 Castle Vale Park	12
3.1.1 Announcing The Park	12
3.1.2 Physical Access	12
3.1.3 Social Access	13
3.2 Coronation Park	13
3.2.1 Announcing The Park	13
3.2.2 Physical Access	14
3.2.3 Social Access	14
3.3 Aspects Of Design	14
<b>4. Healthy, Safe and Secure</b>	<b>15</b>
4.1 Healthy Parks	15
4.2 Quality and Safe Equipment and Facilities	16
4.3 Health and Safety Policies	17
4.4 Feeling Safe and Secure	17
4.5 Encouraging Responsible Dog Owners	18
<b>5. Well Maintained and Clean</b>	<b>19</b>
5.1 Litter and Waste Management	19
5.2 Grounds Maintenance	20
5.3 Buildings and Infrastructure Maintenance	20
5.4 Equipment Maintenance	20
<b>6. Sustainability</b>	<b>21</b>
6.1 Horticulture, Peat and Pesticides	21
6.2 Energy, Water and Resources	22

6.3 Arboriculture and Woodland Management	23
6.3.1 Castle Vale Park	23
6.3.2 Coronation Park	23
<b>7. Conservation and Heritage</b>	<b>24</b>
7.1 Natural Features, Wildlife and Flora	24
7.1.1 Castle Vale Park	24
7.1.2 Coronation Park	25
7.2 Landscape	25
7.3 Buildings, Structures and Historic Character	26
<b>8. Community Involvement</b>	<b>27</b>
8.1 Patterns of Use	27
8.2 Volunteers and Friends Group	28
8.3 Events	28
8.4 Schools and Other Groups	28
<b>9. Marketing</b>	<b>30</b>
9.1 Marketing Strategy	30
9.2 Information Provision and Interpretation	31
<b>10. Management</b>	<b>32</b>
10.1 Staffing Structure	32
10.2 Strategic Context of Castle Vale Park and Coronation Park	32
10.3 Financial Management	34
<b>11. The Parks For People Project - 2013 to 2018</b>	<b>35</b>
<b>12. Annual Updates</b>	<b>42</b>
12.1 2014 Achievements , Events & Volunteers	42
12.2 2015 Achievements, Events & Volunteers	44
12.3 2016 Achievements, Events & Volunteers	47
12.4 2017 Achievements, Events & Volunteers	50
12.5 2018 Achievements, Events & Volunteers	50
<b>13. Appendices</b>	<b>52</b>
Appendix 1 Work programmes	
Appendix 2 Budget	
Appendix 3 Final Evaluation Report	
Appendix 4 Copy of a Risk Assessment (Bug Hotel building)	
Appendix 5 Volunteer Good Practice Guide	
Appendix 6 Green Flag Award 2017 & Response to Feedback	







**Northumberland**  
County Council  
Local Services  
County Hall Morpeth Northumberland  
NE61 2EF Tel: 01670 533000

#### Location Plan



Coronation Park

Castle Vale Park



Park Entrance/Exit

Scale: 1:3000

# **1. Introduction**

## **1.1 Summary of the Plan**

This management plan sets out the current position for Castle Vale Park and Coronation Park, and what can be expected in terms of maintenance and future development. It is intended to be a working document for all staff, volunteers and other stakeholders involved in the management and maintenance of the park.

The plan follows the Green Flag Award format and guidelines set out in 'Raising the Standard' (2009). Each chapter describes the current situation for the parks, and states where improvements are to be made. Work programmes and future projects are included towards the end of the plan.

It is a five year plan and will be reviewed in its entirety in 2019. However, some actions are linked to the Parks Development Officer post, which was funded by Heritage Lottery Fund and Big Lottery until June 2018.

Annual updates about management, work programmes, projects, achievements, activities and visitor numbers are included in Chapters 11 and Appendix 1.

## **1.2 About the Parks**

Castle Vale Park and Coronation Park are located on the northern banks of the River Tweed, on either side of Berwick Railway Station. They are joined by a successful Parks for People grant, awarded to both parks in 2012, under the project name Berwick Parks Project, as well as by the remains of Berwick Castle. Pedestrian routes over the train station and along the River Tweed physically link the parks.

North of the train station, and at just 0.35 hectares, Coronation Park is the most northerly, and possibly smallest, formal park in England. It provides an attractive route from the town to the river, outdoor educational and events space, a sculpture trail, a shelter and pergola, each positioned to make the most of the stunning and timeless view of the Tweed, and wildlife friendly planting. It also provides some of the best accessible views of the remains of Berwick Castle.

Just south of the train station, and popular with people waiting for trains, Castle Vale Park is larger at 1.75 acres. It contains shelters, a lily pond, restored rock gardens and rose gardens, with excellent views of the Royal Border Bridge. This park contains a number of routes within it which lead down to the river from the town.

## **1.3 A Brief History of the Parks**

### **1.3.1 Castle Vale Park**

Castle Vale Park was formed from land given to Berwick Corporation by local baker and businessman, John Cairns, in 1928. Mr Cairns' old house on Tweed Street backs on to the park and he was said to oversee the activities in the park from a platform in his back garden. The park was laid out by Mr Cairns' gardener and opened in 1929, with additional planting and hedges added in 1931. Railings and a gate at the Railway Street entrance were added in 1934.

Castle Vale Park lies within a valley, bordered to the east by the Elizabethan Town Wall and by the remains of Berwick Castle to the west. It is located in one of the most historic parts of Berwick, as it is the site of numerous medieval structures built to defend the town during many conflicts.

The park design is an interpretation of art-deco style garden design common to the late 1920s, especially in the shape of the lily pond, the design of the shelters and horticultural planting. Access is pedestrian only through stone pillars near the Rail station across a metal footbridge and again at the bottom of the park near the Town Walls

The park extends eastwards from the main section with the lily pond and viewpoint, to incorporate a chalybeate well, called Conqueror's Well, which dates from c.1882 and is named after Berwick watch and clock maker Peter Conqueror. This is situated on the riverside walk known as The New Road.

### **1.3.2 Coronation Park**

Coronation Park was acquired by the Berwick Corporation in the early 20<sup>th</sup> century and was originally intended to be the site of tree planting to commemorate the crowning of Edward VIII in 1936. His abdication resulted in the crowning of George VI and ultimately the park was laid out in a more formal style, with two shelters, shrub beds, formal planting and footpaths. It was opened for the Coronation of King George VI in 1937.

The site was formerly part of Tommy the Miller's Field, the southern part of which remains in private ownership, and is regularly grazed by cattle. However, the wall that separates the two areas is not new; a boundary along a similar line was mentioned in a survey of the castle in 1538 and is shown on drawings from 1790.

At the top of the park is the site of Gallows Knowe. This was the site of public executions by hanging until 1823, the last being Grace Griffin.

Berwick Castle is one of the most interesting historic features associated with Coronation Park. The castle sat to the east of the park, isolated on a hill, is surrounded by ravines to the north and east and connected to the town by a causeway. It was the main entrance to



Berwick from the Borders. The first reliable record of the castle is from 1165 and it was a focal point of the turbulent history of Berwick, which saw the town change hands between the English and the Scots many times, eventually becoming part of England.

In the mid-1800s the castle's location was deemed to be the best route for the last link in the railway line between London and Edinburgh, and it was sold to the North British Railway Company in 1843. The ravines were filled in, most of the castle demolished, and the new railway line was opened by Queen Victoria in 1850.

The White Walls, part of the north western part of the castle, remain in Tommy the Miller's Field and on The New Road by the River Tweed. Coronation Park provides one of the best accessible places for viewing the walls.

Latterly both parks were owned and managed by Berwick Borough Council, until they were transferred to Northumberland County Council as part of the Local Government Review in 2009.

Work on a Parks for People application began in 2010, led by officers from Northumberland County Council, in partnership with Berwick upon Tweed Town Council, Berwick in Bloom and Castlegate Area Residents Association. The park was awarded the funding in December 2012.

#### **1.4 Parks for People Improvements (2013 - 2018)**

Castle Vale Park and Coronation Park were jointly awarded Parks for People funding from the Heritage Lottery Fund and Big Lottery in 2012.

The funding has brought the two parks back to life through well planned site improvements and the appointment of a Parks Development Officer, whose role is to ensure maintenance is kept to a very high standard and to maximise community involvement in the two parks. The Parks Development Officer was appointed on a five year contract in June 2013.

Work began on physical improvements in the park began in November 2013, and were completed in July 2014. These improvements include:

- Restoration of shelters in both parks, improvement of the pergola in Castle Vale Park and creation of new pergola in Coronation Park
- Restoration of the Lily Pond in Castle Vale Park
- Restoration of the Rock Gardens in Castle Vale Park
- Improvements to entrances, footpaths, handrails and steps throughout both parks
- New gates, signage and interpretation
- New seats and bins
- Creation of an open space near the southern shelter in Coronation Park, available to use as an outdoor education space or for events
- Removal of shrubs to improve sight lines and to provide space for more attractive planting

- Creation of a spring bulb and summer meadow in Coronation Park to improve biodiversity
- Removal and crown clearing of selected trees to restore significant vistas
- Installation of electricity supplies to both parks to facilitate events, Christmas lights and other activities.

TGP Landscape Architects were the lead consultants and landscape architects. Landscape Management Services (LMS) were the lead main construction contractor.

A condition of the funding is to achieve the Green Flag Award in the year following completion of the physical improvements, and to maintain the award for at least seven consecutive years.

More details of the project, including the activity plan and photographs of the parks before the project, are given in Chapter 11. The final evaluation report is added to Appendix 3

## 1.5 Designations

Both parks are dedicated Public Open Space and lie within the Berwick upon Tweed Conservation Area.

There are two scheduled ancient monuments in Castle Vale Park:

- Megs Mount
- The Elizabethan Walls at Tweed Street

Berwick Castle borders the Coronation Park boundary.

The Royal Border Bridge is situated to the east of the parks.

The south-west boundary of Castle Vale Park borders the Tweed Catchment Special Scientific Interest (SSSI), The Lower Tweed and Whiteadder Special Area of Conservation (SAC) and the Tweed Estuary.

The south border of Coronation Park borders an area of Environmental Stewardship which incorporates Carlin Brae and the English Heritage guardianship site where the surviving castle walls are found.

Both parks border Berwick Railway Station which is a Grade II listed building.

## 1.6 Site Details

Grid reference ; Castle Vale Park NT994533  
Coronation Park NT993535

Area ; Castle Vale Park 1.7ha  
Coronation Park 0.3ha

Access; Both parks are situated in the busy town of Berwick in Northumberland and can be accessed from a number of streets and footpaths. There are 7

entrances in total.

Local facilities; There are no public toilets the nearest being the Rail station and in town  
The nearest public telephone is the Rail station

Transport;      Buses  
The Rail station is a transport interchange with buses just outside the  
station entrance

Train  
Both parks straddle the East Coast Main Line station of Berwick with regular  
services to Edinburgh and Newcastle

Parking          The nearest car parking is at the Rail station (PAY) otherwise disc parking at  
Castle Terrace for 3 hours

## **2. The Vision for the Parks**

Castle Vale Park and Coronation Park are vital components of the busy historic market town and tourist destination of Berwick upon Tweed. The main purpose of Castle Vale Park and Coronation Park is to offer free to access, clean, well maintained and well managed green spaces, which meet the needs of residents, workers and visitors to Berwick as a place of calm or active and sociable activity. By involving park users and the local community as the main drivers in its development and management, the aim of the parks is to foster a sense of local pride and community cohesion.

### **The vision for Castle Vale Park and Coronation Park is to:**

- Maintain and continue to improve the park to a high standard
- Ensure there is strong community involvement in the management and development of the park
- Make provision for recreation, education and healthy living in a safe and pleasant environment
- Provide and improve habitats for wildlife and sustainable use of resources.

### 3. A Welcoming Park



Coronation Park, July 2014

*Aim - The overall impression for someone approaching and entering the site is positive and inviting.*

#### 3.1 Castle Vale Park

##### 3.1.1 Announcing The Park

Castle Vale Park has five entrance points, at Railway Street, Tweed Street, Castlegate, with two from the New Road, at the Rowing Club and just downstream of the Royal Border Bridge.

Each entrance has an interpretation welcome panel, circular name plaques or wooden finger post directional signs. All entrances are well maintained and well signed. The consistent use of a 'park style' for handrails, seats, bins and signage provide a well-designed and welcoming feel for the park. There is a notice board at the main entrance where updated information is put on about events talks in the area and notices of interest to the public and where the Green Flag award is posted. There is a directional signpost as you leave the Rail station.

##### 3.1.2 Physical Access

There are five pedestrian access points and one vehicular access into Castle Vale Park. There is no parking, though parking is readily available in the town centre. The vehicular access is shared with an adjacent property – Castle Vale B&B, and the actual ownership of



the road is with the owners of the B&B. There are access rights across this land.

Because of the steep topography of the area, there are many steps and steep slopes within the park, including a new stepped entrance from the train station. However the Parks for People funding allowed for the creation of a new accessible route from Railway Street to the viewpoint and out to Tweed Street, where previously steps had prevented access by wheelchairs and pushchairs. The access past the Elizabethan Town Walls is narrow, again due to the confines of the topography and the Scheduled Ancient Monument. Steps and steep slopes are shown on the maps on the interpretation panels and in the parks leaflet.

The Park Officer has parked within the gates for ease of use for tool transport but all other vehicles would be restricted due to the steep topography

There is a bus stop/interchange at the Rail station where numerous buses use the site and a taxi rank. The rail station is on the main East Coast main line and at present 16 trains stop regularly for Edinburgh and London, with some limited stopping at minor stations including Morpeth and Alnmouth.

Many visitors use the park to sit while waiting for trains, particularly in the summer. The park is frequently used by people following town trails and walking down to the riverside areas to take in the views. There are no real restrictions on pedal cycles but the topography is difficult. Many people use the parks to walk their dogs and general bins are provided for waste. The NCC's animal welfare officer patrols the parks to monitor and encourage responsible dog ownership.

### **3.1.3 Social Access**

In recent years this park has been well looked after by local volunteers and is a key element in the management of the parks and have also provided a welcome and friendly presence on the site, and often report back comments from both residents of the town and visitors. The improvement of infrastructure within the park, combined with the increased staff presence of the Parks Officer also contributes to the welcoming feel of the park. All this adds to the perception of public safety and lessens the fear of crime.

Within the confines of geography and topography we have tried to ensure access for all. There are several steep inclines and major changes of level and some steps are unavoidable. Ramped access and handrails have been installed leading to viewpoints and shelters to help those less mobile. These are also being considered for other areas such as the lily pond.

## **3.2 Coronation Park**

### **3.2.1 Announcing The Park**

There are just two entrances to Coronation Park, at Tommy the Miller's field to the south and off Castle Terrace to the north. All entrances are well maintained and well signed. Both

give pedestrian access and have attractive, bespoke gates that are visible from inside and outside of the park. The south entrance is marked by a circular name plaque, while the north entrance gate features a welcome and interpretation panel. There is a directional sign post as you leave the rail station.

Most visitors to the park arrive on foot. Parking is, therefore, not a major requirement, though on street car parking is available on Castle Terrace. There is a vehicle entrance for works vehicles and grass cutters at Castle Terrace.

There is an interpretation panel, notice board, and leaflet dispenser at the Castle Terrace entrance that are all updated by the parks officer.

### **3.2.2 Physical Access**

Both entrance points are not stepped and are as accessible as possible, taking into account the steep topography of the park. The park leaflet and interpretation panel at Castle Terrace include a map showing the location of steep banks and steps.

Removal of overgrown, poorly maintained shrubs, as well as major improvements to the planting and the shelters in the park, have created a well-planned and well maintained feel. This enhances the welcoming feel as you enter.

The main path through the park is a public right of way leading down to The New Road. This public right of way was constructed in 1815 and runs alongside the River Tweed.

Most users in the park walk dogs and, as mentioned, there are general bins and the NCC animal welfare officer can be called into monitor and check on responsible dog ownership.

A new sculpture trail was installed in 2018. This, and a new orienteering course, provides an interest for younger visitors.

### **3.3.3 Social Access**

The 'Friends Of Castle Parks' volunteer group plays an active role, under the supervision of the Parks Officer, in creating a welcoming, well cared for, and safe atmosphere for all park users. There is one set of steps in the park, but there are also ramped paths that allow access to all areas for those with reduced mobility.

## **3.4 Aspects of Design**

Both parks were designed in the 1920s and 1930s and the layout of the parks has been maintained as part of their heritage. However, there is opportunity and scope to deliver features and uses more relevant to today's users, to encourage a desire to explore and discover the parks' features. Recently, this has involved new wooden chainsaw sculptures, new Bug Hotel and a new orienteering course. The planting in the park contains a good variety of texture, colour and benefits to wildlife, complemented by mix of hard and soft

landscaping.

## 4. Healthy, Safe and Secure



*The Lily Pond, Castle Vale Park*

*Aim - The park is a healthy, safe and secure place for all members of the community to use. Relevant issues are addressed in the management plan and implemented on the ground. New concerns which arise are addressed promptly and appropriately.*

### 4.1 Healthy Parks

The most sustainable solution to achieving a sense of security is to ensure the parks are well used and well respected. The presence of the Parks Officer, clearly identifiable with NCC uniform, helps visitors feel secure. The presence of the volunteers on regular work days ensures good and effective management and development of the parks, and feeling of community engagement. Other agencies that contribute to management include;

- Northumberland Youth Offending Service
- Northumberland Police and Police Support
- Berwick Friends Of Castle Parks
- Army cadets units

Both parks will continue to provide opportunities where possible for these, and other, groups. The Friends of Castle Parks provide a regular presence through practical conservation and the provision of events and activities in the spring and summer months. There is also a Northumberland County Council horticultural apprentice who helps the Parks Officer weekly.

Both parks are well used by walkers and runners. The recent improvements to the

infrastructure of the parks mean they are more accessible than before, creating more opportunities for people to enjoy informal outdoor exercise.

The Parks Officer organises regular volunteer gardening and maintenance tasks, both of which offer a healthy pastime to local people.

We offered a series of free Tai Chi sessions during the summer of 2014, led by a local Tai Chi instructor. This was repeated in 2015 and 2018 and will be reviewed in future to introduce a small charge for the sessions and cover costs.

The parks are popular with Berwick Camera Club and art group, who regularly meet in the parks. Berwick Camera Club ran a series of events in the parks in 2015 to help people improve their photography skills, with further sessions in 2017. Further opportunities for this on a more consistent basis will be explored.

The recent infrastructure improvements and restoration of views and vistas provide plenty of space for peaceful and contemplative use of the parks.

There is some potential to encourage the adjacent residential homes to use the parks more often, as well as to promote the parks to more existing local groups for their enjoyment and benefit.

A new orienteering trail was put together with Newcastle & Tyneside Orienteers (NATO) which encompasses a route using both the parks and the Riverside area.

## **4.2 Quality and Safe Equipment and Facilities**

All of the features within both parks have been massively improved with the Parks for People funding and are of a high quality, both in design and manufacture. The features within the parks are checked on a regular basis by the Parks Officer and NEAT teams to ensure they remain in a safe condition for visitors, and any issues are dealt with promptly by reporting to either the Green Spaces Officer or Senior NEAT team leader.

There are no play or sports facilities within either park, so the main areas are the entrances, shelters, seats, footpaths, steps, bins, handrails and trees. Immediate and obvious dangers are addressed promptly. Until the end of the defects liability period in July 2015, the main contractor for the park improvements carried out the repairs, after which repairs are being done by Northumberland County Council's Property Services, park staff or local contractors where necessary.

An annual checklist, introduced in 2015, monitors and records the condition of trees to the Tree Officer, footpaths, shelters and entrances are reported to the Green Spaces Officer or Senior NEAT team leader.

### **4.3 Health and Safety Policies**

Castle Vale Park and Coronation Park fall within the remit of Northumberland County Council's health and safety policies and risk assessments, copies of which are issued to all Neighbourhood Services operational staff, all of whom are on a regular training programme of relevant courses. This can be highlighted in their annual appraisals, including the Parks Officer. Copies are available on the council's internal website. A copy of a risk assessment is attached in Appendix 4. Specific risk assessments are prepared for individual events.

Volunteers working in the park are subject to the same high duty of care as an employee of the council, thus are effectively classed as employees and as such are asked to sign a Volunteers Code. The duty of care extends to ensuring that volunteers are provided with a safe place of work, safe system of work, safe equipment, adequate training and supervision and personal protective equipment when necessary. The onsite training on the day of work for volunteers is undertaken by the Parks Officer. The officer will have checked whether the work needs a specific risk assessment, provides an outline of the work, what tools will be involved and what is to be achieved. Volunteers will also be given a tools demonstration if any tools are unfamiliar. Tools are checked at the end of the task for damage or fault and either repaired or replaced, if necessary. PPE needed for the task is provided by NCC. All volunteers work under the direct supervision of the Parks Officer who has their emergency contact information should there be an accident .

A volunteers code of conduct is in Appendix 6.

A first aid kit is carried by the Parks Officer and training is provided for all staff. Volunteers have also been trained for outdoor first aid through the Parks For People Project.

Accident reporting is done online by relevant NCC staff.

There will be times when the Parks Officer is lone working, which cannot be avoided. To minimise risk for these occasions, staff are issued with a mobile phone and, if requested, a personal attack alarm. Emergency contact details are kept for staff and volunteers in the event of an accident.

### **4.4 Feeling Safe and Secure**

The compact size and open aspect of the Parks creates a feeling of safety. The presence of the Parks Officer and recent improvements to the park infrastructure and planting schemes create a well maintained feeling, which contributes to the perception of safety.

Both parks have an open feel, with the improved features, planting and better maintained shrubs and hedges contributing to the well managed and cared for feel in the park. Sight lines have been opened up where possible. There is no lighting in the parks at present. The presence of staff and the Friends group mean that problems are reported quickly and therefore addressed.



There is generally little antisocial behaviour or criminal damage within the parks. If it does occur it is spotted and dealt with promptly by the Parks Officer or NEAT team and the local community police officer.

However, the town of Berwick upon Tweed has a problem with adults drinking in public places, sometimes including the parks, especially at Meg's Mount in Castle Vale Park. To combat this, there is a town-wide ban on drinking in public places and a Public Space Protection Order (PSPO) is in place.

One particular problem area for litter is at Meg's Mount, where cans, glass bottles and plastic bottles are thrown down the bankside. This can become very difficult to remove. A bin has been installed here, and is used by the drinkers, but is insufficient to prevent some litter being thrown down the bank.

The local police are aware of the issue and the problems it causes town-wide. Police actively encourage the Parks Officer and volunteers to report incidents of public alcohol consumption. The police response is usually good, other priorities permitting. The police have been involved in and supportive of the parks improvement project from its inception. The Parks Officer has attended the Local Multi Agency Partnership (LMAP) meetings when there have been particular issues. The NEAT teams/Tree Teams will also help to keep the amount of litter under control. CCTV is currently being considered.

#### **4.5 Encouraging Responsible Dog Owners**

The parks are popular routes for dog walkers and, as everywhere, dog fouling occurs. The parks are included in the patrol routes for the Animal Welfare Officers, who can issue fixed penalty notices to owners who do not clear up after their dogs. There are new and additional general litter bins in both parks and at or near park entrances on Castle Terrace, Railway Street, Castlegate and at the Boating Club on The New Road. The Parks Officer encourages responsible dog ownership with park users and has engaged the local Scouts to produce posters that raise awareness of the issue, which have been positioned in prominent places onsite. For 2019, we have engaged with Brownies and Guides to produce a new set of posters. Furthermore, members of the public can report dog fouling issues on the NCC website.

For both the drinking and dog fouling issues, the increased presence of the Parks Development Officer and positive general public use, following the recent improvement works, should contribute to a reduction in both type of incidents. This will be monitored during the next three years.

## 5. Well Maintained and Clean



Keeping the Park Tidy! Castle Vale Park, summer 2014

*Aim – Issues of cleanliness and maintenance are addressed for aesthetic and health and safety reasons.*

### 5.1 Litter and Waste Management

Cleanliness is part of the package that creates a feeling of safety within the park and encourages more positive behaviour from visitors. Poor maintenance produces hazards for the public and staff and creates an atmosphere of unkemptness, disinterest, and worsened perceptions of safety. NCC consider it important, therefore, to maintain high standards of cleanliness. Castle Vale Park and Coronation Park are patrolled daily by the Parks Officer and volunteers, and litter picked when necessary. Evidence of alcohol consumption and antisocial behaviour in the park is monitored and reported to the police.

There are three bins in Castle Vale Park and one in Coronation Park. These are emptied by the NEAT team twice a week. This will be monitored to establish if this is sufficient across a wider period of use. Close working links between the park staff and NEAT teams mean that operational issues of this kind can be identified and addressed easily and quickly.

Litter collected by the Parks Officer and volunteers is bagged and left at park entrances to be collected and disposed of by the NEAT teams as part of their regular town-wide cleansing activities. The use of sharps boxes for needles is monitored and training given in picking up and disposing. Volunteers are not asked to pick up needles, but are to report their position in order for staff to collect.

Green waste is at present composted in the two parks where possible. Where trees are

pruned or felled, the wood is left in habitat piles and chipped and left onsite as a valuable wildlife habitat.

## **5.2 Grounds Maintenance**

The grounds maintenance operations within both parks are done in-house to a high standard by the Parks Officer, with support from the NEAT team. The Parks Officer cares for the formal horticultural aspects of the park, whilst the NEAT teams grass cut and cut hedges. Operations of such can be seen in Appendix 1. Any tree works are undertaken by the NCC Tree Team under direction from the Tree Officer. The Tree Officer and Green Spaces officer have bi-monthly catch ups regarding site inspection issues that are highlighted by the Parks Officer, Volunteers or the public.

Criminal damage, such as graffiti or vandalism to the parks infrastructure, are thankfully rare events. However, if they do occur then they are dealt with as soon as they are discovered. The Parks Officer deals with as much as possible, with support from the NEAT team or relevant contractors when necessary. All graffiti, vandalism and criminal damage is reported to Northumbria Police by the Parks Officer. Social media sites are used to highlight the issues to the wider community to promote more reporting of the issues.

## **5.3 Building and Infrastructure Maintenance**

The buildings in the parks are limited to shelters and pergolas; infrastructure includes footpaths, handrails, the lily pond, seats, bins, steps, gates and entrances.

As with grounds maintenance, all buildings and infrastructure improved through the Parks for People grant, as listed above, were maintained by Landscape Management Services until the end of the defects liability period in July 2015. After that, all maintenance responsibility has transferred to Neighbourhood Services within Northumberland County Council, with support from Strategic Assets Management and Property Services where necessary. There is, at present, little maintenance required as most of the structures are relatively new.

## **5.4 Equipment Maintenance**

There is no fixed play equipment or sports equipment in either park. Equipment, including mowers, hedgecutters, strimmers and hand tools, is maintained under Northumberland County Council's maintenance programme. Mechanical equipment is serviced annually during the winter, and hand tools are inspected regularly and replaced or repaired if necessary. All staff undergo an extensive induction covering health and safety and the safer use of machinery and are regularly included in the NCC training programme.

Risk assessments are available on the NCC intranet site and no vehicles are left in the parks at night. There is a small amount of fuel stored for the machinery at the NCC depot in secure containers. Ride on mowers are fuelled at the depots and all equipment checked by operatives before use. Recently, new battery operated equipment has been purchased for the Parks Officer and volunteers and suitable training is given before use.

## 6. Sustainability



*Our recycled Christmas Tree - December 2014*

*Aim - Methods used in maintaining the park and its facilities are environmentally sound, relying on best practice according to current knowledge. Management are aware of the range of techniques available to them, and demonstrate that informed choices have been made and are regularly reviewed.*

Sustainability means 'able to be maintained at a certain level' (Oxford dictionary online). For our parks in Northumberland, sustainability means finding the balance between the best community involvement, environmental practice, available budget and staff resources. Northumberland County Council would like to see the parks maintained as an example of sustainability and good practice so future generations will inherit a better environment. The council therefore values its partnership working with residents, businesses and visitors to the town.

### 6.1 Horticulture, Peat and Pesticides

Castle Vale Park and Coronation Park have no demanding annual flower beds or sports turf, which significantly reduces the need to use peat or chemicals. The Parks for People horticultural improvements specifically avoided the reintroduction of annual bedding in order to eliminate regular use of peat as a growing medium, and the high financial and staff cost associated with replacing bedding twice per year.

When they are bought in commercially, herbaceous and perennial plants were, and will be, grown and supplied in peat until a reliable, cost efficient alternative growing medium is offered by the suppliers. This is to minimise cost and reduce the risk of failed plants as the budget constraints are so tight that there is limited possibility of replacing plants that have

died. Affordable peat-free growing mediums will be explored in the future and utilised as soon as feasible.

Currently, if annual plants are used in the parks they are grown by a volunteer on a personal allotment. Plant species are wildlife friendly, such as calendula. While staff and volunteer resources allow, all weeding in the beds, footpath edges, and areas under and around the street furniture in both parks will be done using physical or mechanical methods, avoiding the use of herbicides and unsightly browned off edges of grass.

Unfortunately, in order to improve the biodiversity of Coronation Park through the creation of a meadow, pesticide use has been necessary to eliminate the ruderal weeds and rank grasses on the meadow site. However, the ultimate benefits to wildlife, and the use of the park as a showcase meadow, are considered to be greater than the single, localised application of herbicide.

Green waste generated by weeding, meadow maintenance and hedge cutting from both parks on a small scale can be composted. Otherwise large amounts are collected with the council's municipal green waste collections and composted off site at a local SITA green waste recycling site or at Com-Vert green waste composting facility near Alnwick. Chipped green waste from shrubs and trees is recycled for use as mulch on council shrub beds.

Whenever possible, and where space and location allows, brash and timber from trees will be wood chipped and used as mulch, or stacked to create invertebrate habitat.

All of these have contributed to a wildlife rich resource and this is showing in the wildlife counts that are happening weekly with some previously unseen species being recorded, such as great spotted woodpecker and small skipper butterfly. The creation of a new bug hotel will add to the habitat types.

## **6.2 Energy, Water and Resources**

The nature of Castle Vale Park and Coronation Park and the features in them keep energy and water use and resource requirement to a minimum.

The lily pond in Castle Vale Park is likely to be the biggest requirement for water usage if the water level drops and it needs to be refilled in warm weather. Water consumption will be monitored. The pump for the lily pond was to be solar powered, storing up energy during the day and operating overnight. However, this has never worked despite several engineer visits; we are currently investigating alternatives. Over the previous summer 2018 the pond was monitored by the Parks Officer and found not to need at this stage a pump.

All timber used in the restoration of the parks is Forest Stewardship Council (FSC) certified, Where replacement timbers are required for pergola, shelter or street furniture repairs, these will also be certified by the FSC. The use of recycled benches will be considered in the future.

The use of herbaceous planting in the park has significantly reduced the need to water



plants in dry weather. Watering will only be done when it is necessary to avoid the loss of plants. It will be done during cooler times of day and applied topically rather than via a sprinkler system.

The recent purchase of mechanical tools powered by rechargeable batteries helps to reduce our consumption of petrol and oil, thus reducing emissions and also reducing noise pollution. (Tool purchase has been funded by the Friends of the Parks from funds raised predominantly from Open Gardens events).

## **6.3 Arboriculture and Woodland Management**

### **6.3.1 Castle Vale Park**

Castle Vale Park has several distinct areas where the tree cover differs.

The steep valley sides of the River Tweed alongside the New Road are mostly covered with shrubs and young trees. Anecdotal accounts and photographic records of this area show that the banks were unwooded until relatively recently.

The trees and shrubs on these banks provide welcome biodiversity and wildlife habitat and also provide ground stabilisation. However, the soil upon which they grow is likely to be shallow, which may create problems as larger tree species mature and outgrow the capacity of the bank to support them. These trees will be monitored and if they pose a risk to the safety of people using the park or the New Road, they will be felled. Wherever possible they will be section felled to a height that enables us to retain a trunk to decompose naturally and provide standing deadwood habitat, which is becoming increasingly rare.

Trees around the lily pond, by the steps to the New Road, and near the viewpoint consist of a mixture of mature mixed broadleaves, as well as a row of semi mature beech behind Tweed Street's gardens and a mature, majestic holly to the east of the lily pond shelter. The trees in this part of the park were surveyed for the Parks for People project. Through that funding, many were crown cleared or crown lifted, with some selected felling for safety and to open up vistas that were originally part of the park's design. They will be inspected annually for safety and any necessary works carried out if any trees become unsafe.

The bank in front of the view point, which faces the Royal Border Bridge, will be managed to maintain the trees to a low height, to retain the spectacular views of the bridge and River Tweed.

### **6.3.2 Coronation Park**

There are a number of mature sycamores in the park, which provide reasonable habitat, mostly because of their age and size. The aesthetic impact of large, mature trees is desirable, so these trees will be monitored for safety. If any felling is required, they will be replaced with species with greater biodiversity and aesthetic value, including oak and lime (*Quercus robur*, *Tilia cordata*) sourced locally from a supplier such as Cheviot Trees.

## 7. Conservation and Heritage



Historic photographs of Coronation Park & Castle Vale

*Aim - Particular attention is paid to the conservation and appropriate management of natural features, wildlife and flora, landscape features, buildings and structural features. These features will serve their function well without placing undue pressure on the environment.*

### 7.1 Natural Features, Wildlife and Flora

#### 7.1.1 Castle Vale Park

Castle Vale Park contains a variety of managed habitats, including trees, the lily pond, rock gardens, spring bulbs, some areas of rough grass and mown grass.

The lily pond is being managed for the enrichment of wildlife with the introduction of native pond plants and to increase diversity with platforms and shelter areas.

Wherever possible all plants have been selected to be wildlife friendly or nectar rich, providing a long flowering season.

Regular weekly bird, butterfly and flora surveys have been done by the Park Staff and volunteers. In 2017, emphasis was put on butterfly, meadow, and birds surveys in conjunction with Berwick Wildlife Group to support the Friends group, with results recorded and monitored. Survey results are entered into the national BTO Garden Birdwatch database, thereby contributing to national as well as local wildlife monitoring.

There are grey squirrels in Castle Vale Park. Links will be made in 2019 to Red Squirrels North East to investigate whether culling of greys is possible or practical in this area.

Events including the RSPB Big Garden Birdwatch, Bioblitz, Big Beastie Hunt and the Heritage Open Days give the public the opportunity to learn about the wildlife in the park and the adjacent area and create bat and bird boxes for use in the parks and at home. In 2019, community reparation volunteers will be building tawny owl and kestrel boxes. These will be installed by Northumberland County Tree Team. Timber is being donated by a local

construction firm.

The management of all the wooded areas is carried out so as to cause minimum disturbance to the wildlife and to enhance the natural woodland. No tree felling will take place during the bird breeding season and bat hibernation season unless the tree poses a risk to park users. Fallen deadwood is usually left on the ground, where possible, to provide alternative habitats. Safe standing deadwood will also be left.

### **7.1.2 Coronation Park**

Coronation Park was formerly a patch of green desert, adjacent to wildlife rich areas like Tommy the Miller's field and the Tweed estuary. There was no formal floral planting, solely overgrown, poorly managed shrubs that were not allowed to flower. However, the Parks for People improvements have significantly improved the natural habitats in the park and the opportunity to create more.

All herbaceous plants have been selected to be wildlife friendly or nectar rich, and to provide a flowering season that lasts as long as possible. An increase in the number of butterflies in the park has already been observed, and monitoring will continue.

The Parks for People funding provided an opportunity to create a spring bulb and summer meadow on previously short mown amenity grassland. The meadow species composition is based on NVC grassland MG5 *Cynosurus cristatus* - *Centaurea scabiosa*, with fewer grasses and more perennial flowering plants. The bulbs in the meadow include narcissus, galanthus and hyacinth. Additional work was required in 2015 to prepare the ground, plant bulbs and sow the meadow seed. In 2016, the area was re-sown to improve diversity. In subsequent years the meadow will be cut in late summer, with arisings removed and recycled into soil improver off-site (see Chapter 6 for details).

Many self-sown sycamores have been removed from the bank on the south eastern edge of the park, primarily to improve the views of the castle walls. Smaller trees species, including crab apple, hazel, hawthorn and guelder rose, have been planted on the bank to compensate for the loss of the sycamores, with the added benefit of a having greater ecological value. The understorey in this area is dominated by spear thistle and native and cultivated spring flowers, including garlic mustard, wood anemone, bluebell, wild daffodil and wood tulip. The bank will be managed lightly to encourage a wider diversity of plant species.

Through the work of the Parks Officer at events and with schools and local groups, additional habitats such as log piles and shelter boxes have been created to benefit invertebrates, and bird and bat boxes have been installed.

## **7.2 Landscape**

Castle Vale Park hugs the steep sided valley of the River Tweed, to the east of the remains of Berwick Castle. The view point at the rose garden has one of the town's best views of the

Royal Border Bridge and is popular with photographers and train spotters.

West of the train station, Coronation Park has spectacular views of the river to the west. The shelter and pergola in the park are ideally situated to make the most of this view, and obstructing trees and shrubs have been removed.

The steep valley-side of the Tweed makes up the landscape of the parks, and was one of the key factors in the location of Berwick Castle. For this reason, the views to the castle from Coronation Park have been restored.

Vistas will be maintained through sympathetic tree and woodland management.

### **7.3 Buildings, Structures and Historic Character**

With just four buildings or structures in Castle Vale Park and two in Coronation Park, management requirements are not onerous.

In Castle Vale Park, the lily pond and lily pond shelter have been restored to reflect their original historic character. The pergola, which was added by CARA in 2002, has been enhanced by the addition of timber beams in the same style as the northern shelter in Coronation Park, and an additional shelter has been restored at the view point.

In Coronation Park, the southern shelter has been restored to its original condition and design and colour scheme, and will continue to be managed as such. The original northern shelter was in such poor condition and of little heritage significance that it was felt appropriate to be removed. It was replaced with a pergola, designed in a style reminiscent of the era when the park was originally laid out, and will continue to be managed as such.

## 8. Community Involvement



Willow spiling with volunteers, Castle Vale Park November 2014

*Aim - Park management authorities will actively pursue the involvement of members of the community with representation of as many park user groups as possible.*

Community involvement is at the heart of the successful use, management and improvement of the two parks. The support of local people, user groups, partners and other stakeholders is fundamental to the parks success.

Community involvement in Castle Vale Park and Coronation Park was a fundamental element in the success of the Parks for People award, thanks to the immense efforts made by a small number of volunteers and two local groups, Castlegate Area Residents Association and Berwick in Bloom.

Through the Parks for People award the number of people involved in the parks has increased significantly, with more volunteers, groups and events, as well as even more input from the original people. Groups involved so far have included Berwick Academy, Berwick Youth Group, Berwick Wildlife group and individual volunteers. The Berwick Parks Project Friends Group has totalled over 1400 hours of voluntary work in 2018.

### 8.1 Patterns of Use

For the final evaluation report that was undertaken for the Parks For People Project, a visitor survey was carried out by staff and volunteers in 2018. This was done in order to understand the patterns of use and wishes of groups, residents and visitors who have a stake in how the parks develop. Monitoring attitudes to the parks ensures that management and future developments meet the needs and expectations of all park users. A copy of the

## **8.2 Volunteers and the Friends Group**

The two original groups that were involved in the Parks For People project have now merged into one group called The Friends of Castle Parks. So far, community involvement has included practical maintenance and gardening, help with events, monitoring and evaluation, representation on the former steering group and an emerging Friends group. This will continue and expand through the work of the Parks Officer.

The Friends group encompasses both parks. They are proactive in conversing with businesses and have worked at attracting funding bids; a successful bid in 2018 saw a grant from the private firm Suez to create the wildlife sculptures in Coronation Park.

## **8.3 Events**

The Parks Officer organises and leads a wide range of events in the park, including dawn chorus walks, wildlife monitoring, Halloween events and heritage walks. There are opportunities to increase this offer through links with Berwick Youth Project, The Maltings and Active Northumberland.

A programme of events for each year, up to at least 2018, was developed and advertised locally, regionally and online, making use of events listings already produced by Berwick upon Tweed Town Council and Northumberland County Council or Active Northumberland. From the end of the Parks For People Project in June 2018, the events programme has been taken on board by the Friends Of Castle Parks Group forming their own committee for event planning.

Annual records of numbers of people attending events, and volunteers working in the park are included in Chapter 12.

## **8.4 Schools and Other Groups**

There is an opportunity to increase use of the park by local schools. During the development stage of the Parks for People project, Berwick Middle School and Holy Trinity First School expressed an interest in using the renovated park, but have not yet actualised this. During spring and summer 2017, the Parks Development Officer worked on finding out what the park could offer local schools and how they can use the park more. One idea discussed involved the sculpture trail and developing a relevant education pack or programme. A further idea that was moved forward was the creation of the new orienteering route that utilises both parks and is widely available both from the NCC and Friends website. A copy is also held at Berwick YHA and used by visiting groups.

The activity plan created for the Parks for People project identified a number of existing groups who could get involved in the parks in a variety of ways. Berwick Youth project have completed a film of the parks' restoration. The Parks Officer will continue to work with other groups, including Guides, Scouts, Army Cadets as required and as projects become

apparent.

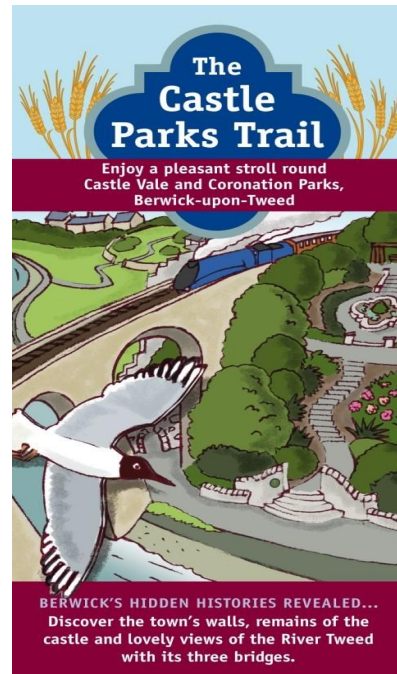
We have built up a good working relationship with the Youth Community Reparation Team who attend weekly to carry out maintenance works and work on projects as they arise.

The Activity Plan summary is included in Chapter 1.



## 9. Marketing

**Aim - There is a marketing strategy in place which is used and regularly reviewed. There is good provision of information to users about management strategies and ways to get involved in the park. The park is promoted as a community resource.**



### 9.1 Marketing Strategy

Marketing of a park involves understanding the aspirational goals and current position of the park in terms of use, events, public perception and public needs for the site, then responding to that information in a way which increases use and the sense of public involvement and ownership of the park.

The aspiration for Castle Vale Park and Coronation Park is that they return to their status of well loved and respected areas of green space within the town of Berwick, with excellent standards of maintenance, good community involvement at all levels from management to events, education activities and volunteer activities and adequate staff resources to deliver these.

The current position for the parks is that they have excellent standards of maintenance and infrastructure following the Parks for People investment, and have excellent opportunities for increasing the community involvement and ownership through the Parks Development Officer, emerging Friends Group and existing strong volunteer base.

In order to increase community involvement, the message that the park has been improved and has something to offer must be conveyed to residents, schools, workers, tourists, and visitors to Berwick. This will be done through regular events, promotion of the park, and activities through various outlets listed below and others as they become available. Examples include using shop windows in the town centre to display information about the improvements and events.

Monitoring and evaluation of the parks is part of the Parks for People project and scheduled to be done in 2015 and 2017. Visitor surveys, and if possible non-visitor surveys, will be done in Summer 2015 and 2018, to assess patterns of use and visitor impressions of the

park, to discover why they do or do not visit. Responses will be used to inform future park management and events.

A full marketing strategy for all of Northumberland's Parks is available from the Green Spaces Officer if required.

## **9.2 Information Provision and Interpretation**

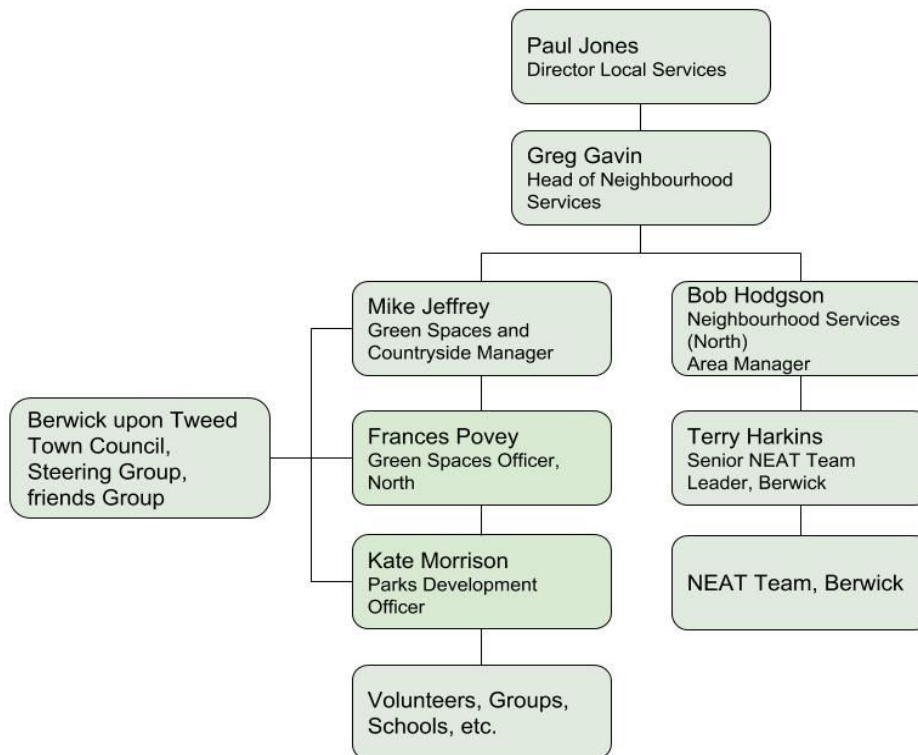
Information about the parks is provided in the following places:

- Welcome and interpretation panels at Castle Terrace, Castle Vale Park, The New Road and Gillies Brae.
- Inclusion on the town map as a point of interest produced by the Chamber of Trade
- Posters put up in the rail station
- Park leaflets and posters distributed and displayed at Berwick Tourist information centre, the Granary Youth Hostel and other locations within the town.
- Attendance at regional leaflet distribution events in the Borders and at Alnwick
- Friends of Castle Parks website
- Northumberland County Council website/Tourist Information site
- Visit Berwick website
- Events leaflets produced and distributed by Northumberland County Council and Berwick upon Tweed Town Council
- Regular press releases for events and newsworthy stories
- Facebook and twitter posts through Northumberland County Council, Friends of the Parks and Berwick upon Tweed Town Council.
- Youtube - film about park improvements made by Berwick Youth Project
- Attendance, display and tour for Northumbria in Bloom's Inaugural meeting in Berwick 2015
- Linking with other projects which enhance and promote Berwick upon Tweed
- Any other opportunities as they become available

## 10. Management

*Aim – The park will be valued by those involved in its management, and have a management plan that sets out the balance between all applicable priorities, partners and policies, and identify the contribution the park is making to wider strategic aims. The plan will be actively implemented and reviewed regularly. Sound financial management of the park is also demonstrated.*

### 10.1 Staffing Structure



The current staffing structure shows the management and maintenance roles in relation to the parks. The parks sit within the Local Services Directorate of Northumberland County Council, within the Neighbourhood Services section. The main management and development duties are carried out by the Green Spaces and Countryside Team, with maintenance support from the Neighbourhood Environmental Action Team (NEAT) maintenance teams in the same Neighbourhood Services division.

### 10.2 Local Strategic Context of Castle Vale Park and Coronation Park

Parks, Country Parks and Green Spaces sit within the Neighbourhood Services division of the Local Services Directorate of Northumberland County Council.

Berwick Parks Project and the Parks for People funding has become a catalyst for a much

wider programme of park improvements throughout the county, largely as a result of the success of the project and the involvement of key senior officers, including the former Chief Executive of the Council and the current Local Services Director, in the planning and opening day stages of the project.

It is important for parks to be recognised strategically by Northumberland County Council to ensure they remain visible and valued in all sections of the council. Castle Vale Park and Coronation Park contribute to a number of policies including:

### **1. Northumberland County Council Corporate Plan 2018-2021**

The corporate plan sets out the council's vision, strategic aims and policy priorities for economic growth, places and environment, stronger communities and families, health and wellbeing and developing the organisation. Castle Vale Park and Coronation Park contribute to:

- 'Places and Environment – our aim is to maintain and further improve the quality of our towns, villages and countryside.
- Stronger Communities and Families – our aim is to ensure that all residents genuinely feel safe, belong, and have a say in how the county is run, and to provide a range of quality community and cultural services and facilities which inspire creativity and participation.'

### **2. Neighbourhood Services Service Statement 2018-21**

The importance of well managed and maintained parks, country parks and green spaces are acknowledged in the 2018-21 service delivery plans, and the attainment of the Green Flag Award every year is a Key Performance Indicator.

### **3. Northumberland Core Strategy Document**

As public open space, Castle Vale Park and Coronation Park fit into the council's Local Plan Delivery document, specifically in the following areas:

- 'Policy 45, Recreational Open Space - include policies for the protection and enhancement of open space, sport and recreation facilities relevant to the Delivery area.
- Policy 46, Green Infrastructure - identify local green infrastructure assets to be protected and seek opportunities to create new green infrastructure.'

#### **Other strategic areas that the parks contribute to include:**

- Northumberland Sustainable Communities Strategy to 2021
- Northumberland Biodiversity Action Plan

### **10.3 Financial management**

The parks have sound financial management, reinforced by the need to keep accurate control over budgets for the Berwick Parks Project 'Parks for People' grant. General budget control is maintained by the Green Spaces Officer, with support from the Green Spaces and Countryside Manager and Northumberland County Council's finance teams.

For the Parks for People grant, the budgets are split into capital works and revenue items. Capital works cover all items associated with the physical improvements on the ground in the parks. Revenue items include the Parks Development Officer salary and associated staff costs, training, website design monitoring and evaluation.

In addition to the Parks for People budget, the parks draw on the budget for the NEAT North teams, through the additional works the NEAT teams carry out in the parks and also the Green Spaces budget if any unforeseen maintenance issues arise.

Some funding is available for events, tools and plants from funds raised by Friends of the Parks whose main funding source is the annual Open Gardens Event.

Since the end of the Parks For People Project in June 2018 the Parks Officer post was secured on a permanent basis by funding from the County Council and part funding by the Town Council. This will allow security for the parks development and means that NCC and the Town Council can draw on the expertise of the Parks Officer for other projects/area of the town.

Additional financial information related to the Parks for People project is given in Chapter 1. Full budget records are held by the Green Spaces Officer. A breakdown of costs for the parks is given in Appendix 2. At present, no specific budget from the Neighbourhood Services team is allotted to the parks management. Money is instead allocated from the general maintenance pot on demand by request from the Green Spaces Officer; this is under review for 2019/2020.

# **11. Parks for People Project**

## **Funding and Partners**

Following a successful first round application to the Parks for People programme, in 2011 Castle Vale Park and Coronation Park were jointly awarded a development stage grant of £53,200 from the Heritage Lottery Fund and Big Lottery to develop the project fully, this was matched with cash contributions from Northumberland County Council, Berwick upon Tweed Town Council and volunteer time to make a total of £56,431 for the development stage of the project.

The second round application was successful and the project was awarded £890,700 for the delivery in December 2012. Match funding from Northumberland County Council, Berwick upon Tweed Town Council and volunteers took the total funding for the project to £942,620.

The total project value of the development and delivery stages is £999,051.

The main partners on the project are:

- Northumberland County Council
- Berwick upon Tweed Town Council
- CARA (Castlegate Area Residents Association).

## **Consultants and Contractors**

Southern Green Landscape Architects were commissioned to help prepare the Stage 1 application with funding from Northumberland County Council and Berwick upon Tweed Town Council.

TGP Landscape Architects won the tender for the lead Landscape Architect for the development and delivery phases of the project. TGP were appointed in January 2012 and will oversee the project until the end of the defects liability period in July 2015.

Landscape Management Services won the tender for the main construction contract of the project. They began work in November 2014 and their project completion certificate was issued on 16<sup>th</sup> July 2014. Their defects liability period ends on 15<sup>th</sup> July 2015.

David Gibson Forestry Services carried out the tree works on the project, which were completed in March 2013.

## **Park Improvements**

The main improvements in the park began in November 2013, and were completed in July 2014. Capital improvements include:

- Replacement of the Coronation Park northern shelter with a pergola
- Restoration of shelters in both parks
- Restoration of the Lily pond in Castle Vale Park

- Restoration of herbaceous borders and rock gardens
- Enhancement of Castle Vale Park pergola
- Improvements to footpaths, steps and handrails throughout the parks
- New gates, signage and interpretation at park entrances
- New seats and bins
- Creation of an open space in Coronation Park, available to use as an outdoor education space or for events
- Removal of shrubs to improve sight lines and to provide space for more attractive planting
- Creation of a spring bulb and summer meadow to improve biodiversity in Coronation Park
- Selective tree felling to restore vistas
- Installation of electricity supplies to both parks
- Employment of Parks Development officer

### **The Parks Development Officer**

The Parks Development Officer (PDO) was appointed in June 2013 on a five year contract funded as part of the project.

The main duties of the PDO are to:

- Carry out a high standard of horticultural and grounds maintenance
- Engage volunteers, as individuals and groups, to assist with parks maintenance, events, monitoring and evaluation
- Facilitate a Friends Group for the parks
- Provide events, guided walks, and a friendly, positive presence in the parks
- Work with school groups to provide led and self led activities in the parks
- Deliver the Activity Programme
- Promote the parks through leaflet distribution, displays and contact with existing volunteer groups in Berwick

The Green Spaces Officer and Green Spaces and Countryside Manager will investigate opportunities to attract additional revenue funding for the parks, once the Parks for People project is complete in 2018.

### **The Activity Plan**

The following programme of activities was drawn up during the development phase of the project, focussing on increasing the range of activities offered and number of visitors to the parks. The table will be updated annually as activities are achieved.



	Activity	Lead	To be done	Complete					
				13	14	15	16	17	18
1	Establish a system for volunteering by individuals	PDO	From 2014		Y				
2	Promote volunteering to organisations and groups	PDO	From 2013	Y	Y	y	y	Y	y
3	Conduct Wildlife surveys	PDO	From 2013	Y	Y	y	y	y	y
4	Compile a photographic record of restoration	PDO	2013-14	Y	Y				
5	Increase the capacity of CARA / set up Friends of Group	PDO	2015			y			
6	Improve signage to and on arrival at parks	GSO, PDO, LA, MC	2015				y		y
7	Prepare and deliver a promotion plan	PDO, GSO	From 2014		Y				
8	Deliver a programme of events	PDO	From 2014	Y	Y	y	y	y	y
9	Produce a film on the restoration	PDO, Berwick Youth Project	2013-2014	Y	Y				
10	Address anti-social behaviour	PDO, GSO, LMAPs	From 2013	Y	Y	Y	Y	y	y
11	Deliver the interpretation plan	PDO, GSO, LA	From 2014		Y				
12	Develop a schools gardening project	PDO	From 2013	Y	Y				
13	Create a learning space in Coronation Park	LA, MC, PDO	From 2013	Y	Y				
14	Develop and manage a community garden	GSO, PDO	From 2015						
15	Develop a pathway to work based on gardening/horticulture	GSO, GSCM, PDO	From 2015						
16	Develop and oral history	PDO, GSO, Volunteers	2016				Y		
17	Make better provision for event organisers	GSO, PDO, LA, MC	From 2014		Y		Y		

PDO – Parks Development Officer

GSO – Green Spaces Officer

GSCM – Green Spaces and Countryside Manager

LA – Landscape Architect

MC – Main Contractor

## Before the funding

The parks were in very poor condition before the funding. The following selection of photographs shows how necessary the improvements were and how far we've come.



The Lily Pond And Shelter, February 2011.



The View Point, Castle Vale Park, February 2011.





The rose garden, pergola and shelter, Castle Vale Park, September 2010.



The View Point, Castle Vale Park, February 2011.





The only signage and interpretation in the park, Coronation Park, September 2010.



The top shelter Coronation Park, September 2010.





The bottom shelter, Coronation Park. September 2010.



The southern entrance gate, Coronation Park, September 2010.

## 12. Annual Updates

This chapter will be added to annually to include each year's achievements, annual reports of volunteers, events and monitoring and evaluation in the relevant years. Responses to each year's Green Flag Award Judges' recommendations will also be included here.

### 12.1 2014 Achievements

- Completion of Parks for People Main Construction Contract
- Parks Re-opened by Her Grace The Duchess of Northumberland, July 2014
- Parks included in Berwick's Northumbria in Bloom route, and contributing to Berwick's Silver Gilt medal
- Berwick Youth Project completed film about the restoration of the parks
- Delivery of 18 events attended by 335 people
- 86 volunteer days given to the parks (604 hours / 7)

### Events and Volunteers

The following tables show the types of event and numbers attending, volunteer activities and volunteer numbers.

#### Events 2014

Number	Date	Number attending	Length of event (hours)	Event title
1	10.05.14	3	2	Dawn Chorus Event
2	11.06.14	10	1	Tai Chi - Castle Vale
3	18.06.14	13	1	Tai Chi - Castle Vale
4	25.06.14	10	1	Tai Chi - Castle Vale
5	02.07.14	11	1	Tai Chi - Castle Vale
6	04.07.14	8	2	Bioblitz - Bat and Moth Event
7	05.07.14	14	1	Bioblitz - River Walk and Pond-dipping etc
8	09.07.14	12	1	Tai Chi - Castle Vale
9	16.07.14	9	1	Tai Chi - Castle Vale
10	23.07.14	12	1	Tai Chi - Castle Vale
11	30.07.14	12	1	Tai Chi - Castle Vale
12	31.07.14	150	3	Parks opening event with The Duchess of Northumberland
13	06.08.14	12	1	Tai Chi - Castle Vale
14	13.08.14	6	1	Tai Chi - Castle Vale
15	20.08.14	10	1	Tai Chi - Castle Vale
16	27.08.14	10	1	Tai Chi - Castle Vale
17	13.09.14	21	1	Heritage Open Day Event
18	28.10.14	12	2	Berwick Parks Project film premiere
	<b>Totals</b>	<b>335</b>	<b>23</b>	

## Volunteers 2014

Number	Date	Volunteers	Hours	Total hrs	Task
1	20.03.14	3	3	9	Steering group meeting
2	28.3.14	2	2	4	Fingerposts
3	1.4.14	1	3	3	Maintenance - Castle Vale Park
4	10.4.14	2	2	4	Rose Planting - Coronation Park
5	14.4.14	15	5	75	Planting - Coronation Park
6	15.4.14	3	3	9	Steering group meeting
7	22.4.14	6	4	24	Planting - Community Garden
8	6.05.14	8	6	48	Planting - Castle Vale Rockery
9	13.05.14	7	5	35	Berwick Academy - Community Garden Site
10	14.05.14	1	3	3	Maintenance - Castle Vale Park
11	15.05.14	3	3	9	Steering group meeting
12	19.05.14	5	2	10	Green Flag visit
13	27.05.14	6	4	24	Berwick Academy - Castle Vale
14	03.06.14	6	4	24	Berwick Academy - Castle Vale
15	17.06.14	6	4	24	Berwick Academy - Castle Vale
16	19.06.14	1	4	4	Maintenance - Castle Vale Park
17	24.06.14	7	3	21	Planting - Castle Vale Rockery
18	01.07.14	13	4	52	Planting - Castle Vale Rockery
19	04.07.14	8	2	2	Bioblitz - Bat and Moth Event
20	05.07.14	14	1	2	Bioblitz - River Walk and Pond-dipping etc
21	15.07.14	8	6	48	Berwick Academy - Castle Vale
22	17.07.14	1	7	7	Maintenance - Castle Vale Park
23	21.07.14	4	3	12	Steering group meeting
24	22.07.14	2	6	12	Fingerposts
25	24.07.14	2	6	12	Maintenance - Coronation Park
26	31.07.14	8	4	32	Parks opening day event
27	26.08.14	2	6	12	Maintenance - Castle Vale Park
28	04.09.14	8	3	24	Daffodil Planting - Shambles Brae
29	09.09.14	3	2	6	Daffodil Planting - Shambles Brae
30	17.09.14	1	3	3	Maintenance - Castle Vale Park
31	18.09.14	6	4	24	Daffodil Planting - Shambles Brae
32	30.09.14	1	6	6	Maintenance - Castle Vale Park
33	02.10.14	4	3	12	Steering group meeting
34	07.10.14	2	3	6	Daffodil Planting - Shambles Brae
35	09.10.14	1	4	4	Maintenance - Castle Vale Park
36	14.10.14	1	5	5	Maintenance - Castle Vale Park
37	22.10.14	1	2	2	Maintenance - Castle Vale Park
38	28.10.14	6	2	12	Berwick Parks Project Film screening
39	19.11.14	1	6	6	Maintenance - Castle Vale park
40	20.11.14	3	3	9	Steering group meeting
41	25.11.14	6	3	18	Bulb Planting - Castle Vale Park
	<b>Totals</b>	<b>188</b>	<b>154</b>	<b>604</b>	



## 12.2 2015 Achievements

- Parks Awarded Silver Gilt medal again at Northumbria in Bloom
- Parks Awarded Green Flag Status



### Green Flag Award 2015/16

- Delivery of 18 events attended by 268 people
- 146 volunteer days given to the parks (1023 hours/7)
- Visitor survey completed – estimated 119,000 visitors a year. 93% of people surveyed would recommend the parks to friends.
- Friends of the Parks Group formed.
- Wildflower Meadow established.

### Events 2015

Number	Date	Number attending	Length of event (hours)	Event title
1	17.1.15	15	3	Photography Workshop
2	31.1.15	13	2	Big Garden Birdwatch- Castle Vale
3	04.04.15	100	2	Easter Egg Hunt – Castle Vale
4	12.04.15	12	3	Photography Workshop
5	02.05.15	8	2	Dawn Chorus
6	18.05.15	5	1	Tai Chi – Castle Vale
7	25.05.15	6	1	Tai Chi – Castle Vale
8	15.06.15	8	1	Tai Chi – Castle Vale
9	22.06.15	5	1	Tai Chi – Castle Vale
10	29.06.15	9	1	Tai Chi – Castle Vale
11	06.07.15	11	1	Tai Chi – Castle Vale
12	11.07.15	25	1	Bioblitz
13	19.07.15	3	2	Photography Workshop
14	20.07.15	8	1	Tai Chi – Castle Vale
15	27.07.15	6	1	Tai Chi – Castle Vale

16	03.08.15	6	1	Tai Chi – Castle Vale
17	10.08.15	6	1	Tai Chi – Castle Vale
18	15.08.15	15	2	Butterfly Hunt – Castle Vale
	Totals	268	28	

## Volunteers 2015

Number	Date	Volunteers	Hours	Total Hrs	Task
1	27.1.15	1	5	5	Maintenance Castle Vale
2	3.2.15	1	3	3	Maintenance Castle Vale
3	3.3.15	10	2	20	Friends Meeting
4	11.3.15	1	6	6	Tourism Fair Kelso
5	17.3.15	1	5	5	Maintenance Castle Vale
6	18.3.15	1	6	6	Tourism Fair Alnwick
7	24.3.15	1	5	5	Maintenance Castle Vale
8	31.3.15	1	5	5	Maintenance Coronation Park
9	8.4.15	1	5	5	Maintenance Castle Vale
10	21.4.15	10	2	20	Friends Meeting
11	14.5.15	5	5	25	Maintenance Castle Vale
12	18.5.15	4	5	20	Maintenance Castle Vale
13	19.5.15	7	3	21	Green Flag Visit
14	26.5.15	5	5	25	Maintenance Castle Vale
15	9.6.15	4	5	20	Maintenance Castle Vale
16	9.6.15	8	2	16	Friends Meeting
17	11.6.15	4	5	20	Maintenance Coronation Park
18	16.6.15	2	5	10	Maintenance Castle Vale
19	18.6.15	4	5	20	Maintenance Castle Vale
20	22.6.15	1	3	3	Maintenance Castle Vale
21	25.6.15	4	5	20	Maintenance Castle Vale
22	26.5.15	1	4	4	Maintenance Castle Vale
23	29.6.15	1	5	5	Maintenance Castle Vale
24	30.6.15	5	5	25	Maintenance Castle Vale
25	2.7.15	3	5	15	Maintenance Castle Vale
26	7.7.15	3	5	15	Maintenance Castle Vale
27	8.7.15	3	5	15	Maintenance Coronation Park
28	10.7.15	3	2	6	Bioblitz Volunteers
29	11.7.15	5	5	25	Bioblitz Berwick Wildlife Group
30	14.7.15	4	5	20	Maintenance Castle Vale
31	15.7.15	4	5	20	Maintenance Castle Vale
32	16.7.15	3	5	15	Maintenance Castle Vale
33	21.7.15	4	5	20	Maintenance Coronation Park
34	23.7.15	3	5	15	Maintenance Castle Vale
35	28.7.15	5	1	5	Visitor Survey Briefing
36	4.8.15	3	2	6	Visitor Survey

37	4.8.15	1	3	3	Visitor Survey
38	4.8.15	1	6	6	Visitor Survey
39	4.8.15	1	8	8	Visitor Survey
40	6.8.15	4	5	20	Maintenance Coronation Park
41	11.8.15	4	5	20	Maintenance Castle Vale
42	15.8.15	4	6	24	Visitor Survey
43	18.8.15	3	5	15	Maintenance Castle Vale
44	20.8.15	4	5	20	Maintenance Castle Vale
45	25.8.15	5	5	25	Maintenance Castle Vale
46	27.8.15	3	5	15	Maintenance Castle Vale
47	27.8.15	4	5	20	Maintenance Coronation Park
48	8.9.15	8	2	16	Friends Meeting
49	13.9.15	1	2	2	Heritage Open day
50	17.9.15	4	5	20	Maintenance Castle Vale
51	22.9.15	3	5	15	Maintenance Castle Vale
52	24.9.15	3	5	15	Maintenance Castle Vale
53	29.9.15	3	5	15	Maintenance Castle Vale
54	6.10.15	4	5	20	Maintenance Coronation Park
55	13.10.15	2	5	10	Maintenance Castle Vale
56	15.10.15	3	5	15	Maintenance Coronation Park
57	20.10.15	3	5	15	Maintenance Castle Vale
58	22.10.15	3	5	15	Maintenance Castle Vale
59	27.10.15	2	5	10	Maintenance Castle Vale
60	29.10.15	3	5	15	Maintenance Castle Vale
61	3.11.15	3	5	15	Maintenance Castle Vale
62	5.11.15	2	5	10	Maintenance Castle Vale
63	10.11.15	3	5	15	Maintenance Coronation Park
64	10.11.15	5	2	10	Friends Meeting
65	12.11.15	2	5	10	Maintenance Coronation Park
66	17.11.15	3	5	15	Maintenance Castle Vale
67	19.11.15	2	5	10	Maintenance Castle Vale
68	24.11.15	4	5	20	Maintenance Castle Vale
69	1.12.15	3	5	15	Wildflower meadow Coronation Park
70	8.12.15	3	5	15	Maintenance Castle Vale
71	8.12.15	3	5	15	Maintenance Castle Vale
72	17.12.15	4	2	8	Friends Meeting
73	17.12.15	4	5	20	Maintenance Castle Vale
74	18.12.15	4	3	12	Volunteers Christmas Dinner
	<b>Totals</b>	<b>243</b>	<b>330</b>	<b>1023</b>	

## 12.3 2016 Achievements

- Castle Vale Park awarded GOLD and Joint Best Park at Northumbria in Bloom



Rhododendrons at Castle Vale May 2016 (Clive McGuinness)

- Coronation Park awarded OUTSTANDING at Northumbria in Bloom Neighbourhood Awards
- Parks awarded Green Flag award for second consecutive year.
- Delivery of 7 events attended by 843 people ( No tai Chi this year as instructor broke her leg. New events – Open Gardens, Big beastie Hunt, Meet the Ancestors and Halloween all very successful).
- 199 volunteer days given to the parks (1394 hours/7)
- Website up and running – [www.friendsofcastleparks.org](http://www.friendsofcastleparks.org)



Wildflower Meadow Summer 2016

## Events 2016

Number	Date	Number attending	Length of event (hours)	Event title
1	2.2.16	5	5	Willow Weaving Castle Vale
2	26.3.16	250	1	Easter Egg Hunt Castle vale
3	30.4.16	8	2	Dawn Chorus
4	18.6.16	200	2	Open Gardens Event
5	16.7.16	200	1	Big Beastie Hunt Castle Vale
6	9.8.16	100	1	Meet The Ancestors Coronation Pk
7	29.10.16	80	1.5	Halloween Coronation Park
	<b>Totals</b>	<b>843</b>	<b>13.5</b>	

## Volunteers 2016

Number	Date	Volunteers	Hours	Total Hrs	Task
1	12.1.16	2	5	10	Maintenance Castle Vale
2	14.1.16	1	5	5	Maintenance Coronation Park
3	19.1.16	3	5	15	Maintenance Castle Vale
4	21.1.16	1	5	5	Maintenance Castle Vale
5	26.1.16	2	5	10	Maintenance Castle Vale
6	28.1.16	1	5	5	Maintenance Castle Vale
7	4.2.16	3	5	15	Maintenance Castle Vale
8	9.2.16	4	5	20	Maintenance Castle Vale
9	9.2.16	7	2	14	Friends Of Meeting
10	11.2.16	3	5	15	Maintenance Coronation Park
11	16.2.16	3	5	15	Maintenance Coronation Park
12	18.2.16	2	5	10	Maintenance Castle Vale
13	23.2.16	4	5	20	Maintenance Castle Vale
14	25.2.16	2	5	10	Maintenance Castle Vale
15	3.3.16	4	5	20	Maintenance Castle Vale
16	8.3.16	4	5	20	Maintenance Castle Vale
17	8.3.16	3	2	6	Friends Meeting
18	9.3.16	1	7	7	Tourism Fair Kelso
19	10.3.16	2	5	10	Maintenance Coronation Park
20	15.3.16	4	5	20	Maintenance Castle Vale
21	17.3.16	2	5	10	Maintenance Castle Vale
22	22.3.16	4	5	20	Maintenance Coronation Park
23	24.2.16	2	5	10	Maintenance Castle Vale
24	26.3.16	2	3	6	Easter Bunny Hunt Volunteers
25	29.3.16	5	5	25	Maintenance Castle Vale
26	31.3.16	2	5	10	Maintenance Coronation Park
27	5.4.16	4	5	20	Maintenance Castle Vale
28	7.4.16	3	5	15	Maintenance Castle Vale

29	12.4.16	4	5	20	Maintenance Castle Vale
30	14.4.16	2	5	10	Maintenance Coronation Park
31	19.4.16	4	5	20	Maintenance Castle Vale
32	21.4.16	2	5	10	Maintenance Coronation Park
33	22.4.16	2	2	4	Northumbria In Bloom Judging
34	26.4.16	5	5	25	Maintenance Castle Vale
35	3.5.16	5	5	25	Maintenance Coronation Park
36	3.5.16	3	2	6	Friends Meeting
37	17.5.16	11	8	88	Trip glendoick Gardens
38	19.5.16	5	5	25	Maintenance Castle Vale
39	24.5.16	4	4	16	Maintenance Tweed Street
40	26.5.16	2	5	10	Maintenance Tweed Street
41	31.5.16	4	5	20	Maintenance Coronation Park
42	2.6.16	2	5	10	Maintenance Castle Vale
43	2.6.16	4	2	8	Friends meeting
44	7.6.16	2	5	10	Maintenance Castle Vale
45	9.6.16	3	4	12	Maintenance Castle Vale
46	14.6.16	4	5	20	Maintenance Coronation Park
47	16.6.16	3	5	15	Maintenance Coronation Park
48	18.6.16	4	6	24	Volunteers Open Gardens
49	21.6.16	4	5	20	Maintenance Castle Vale
50	28.6.16	3	5	15	Maintenance Castle Vale
51	30.6.16	3	5	15	Maintenance Castle Vale
52	5.7.16	3	5	15	Maintenance Castle Vale
53	7.7.16	2	5	10	Maintenance Castle Vale
54	12.7.16	3	5	15	Maintenance Castle Vale
55	12.7.16	6	2	12	Friends Meeting
56	14.7.16	2	5	10	Maintenance Coronation Park
57	16.7.16	4	5	20	Big Beastle hunt Volunteers
58	19.7.16	4	5	20	Maintenance Castle Vale
59	20.7.16	1	3	3	Poster Distribution
60	21.7.16	2	5	10	Maintenance Castle Vale
61	26.7.16	2	5	10	Maintenance Castle Vale
62	28.7.16	2	5	10	Maintenance Coronation Park
63	2.8.16	4	5	20	Maintenance Castle Vale
64	2.8.16	2	5	10	Maintenance Castle Vale
65	9.8.16	5	5	25	Meet The Ancestors Event Volunteers
66	8.8.16	4	2	8	Friends Meeting
67	11.8.16	2	5	10	Maintenance Castle Vale
68	16.8.16	5	5	25	Maintenance Castle Vale
69	18.8.16	1	5	5	Maintenance Coronation Park
70	19.8.16	1	2	2	Website meeting
71	20.8.16	2	10	20	First Aid training
72	21.8.16	2	10	20	First Aid training
73	30.8.16	5	5	25	Maintenance Castle Vale

74	1.9.16	3	5	15	Maintenance Castle Vale
75	6.9.16	3	5	15	Maintenance Castle Vale
76	8.9.16	2	5	10	Maintenance Castle Vale
77	13.9.16	4	5	20	Maintenance Castle Vale
78	15.9.16	2	5	10	Maintenance Coronation Park
79	20.9.16	5	5	25	Maintenance Castle Vale
80	22.9.16	3	5	15	Maintenance Castle Vale
81	27.9.16	5	2	10	Friends Meeting
82	4.10.16	4	5	2	Maintenance coronation Park
83	6.10.16	3	5	15	Maintenance Castle Vale
84	11.10.16	5	5	25	Trip To edrom nursery
85	13.10.16	4	5	20	Maintenance Coronation Park
86	28.10.16	4	8	32	Trip Monteviot Gardens
87	29.10.16	4	5	20	Halloween Event - Volunteers
88	29.11.16	3	5	15	Maintenance Castle Vale
89	29.11.16	2	2	6	Friends Meeting
90	6.12.16	3	5	15	Maintenance Castle Vale
91	8.12.16	1	5	5	Maintenance Castle Vale
	<b>Totals</b>	<b>290</b>	<b>438</b>	<b>1394</b>	

## 12.4 2017 Achievements

- Castle Vale Park awarded GOLD again by Northumbria in Bloom
- Coronation Park awarded OUTSTANDING again by Northumbria in Bloom Neighbourhood Awards
- Parks awarded Green Flag award for third consecutive year.
- Project runner up in the 'Best Urban Project' at the LOVE Northumberland Awards.
- Project nominated for 'Community Project of the Year Award' at Northumberland County Council Excellence Awards
- Delivery of 5 events attended by 320 people -Big Garden Birdwatch, Easter Bunny Hunt, Dawn Chorus Walk, Open Gardens, Big beastie Hunt.
- 225 volunteer days given to the parks (1576 hours/7)
- Funding secured for Chainsaw Sculpture Project - first sculptures installed with the help of Berwick Army Cadets in December.

## 12.4 2018 Achievements

- Castle Vale Park awarded GOLD again by Northumbria in Bloom
- Coronation Park awarded OUTSTANDING again by Northumbria in Bloom Neighbourhood Awards
- Parks awarded Green Flag award for fourth consecutive year.



- Delivery of 14 events attended by 506 people -Big Garden Birdwatch, Sculpture Installations (x2), U3A Guided Walk, Easter Bunny Hunt, Dawn Chorus Walk, Open Gardens, HLF Sign Off, Picnic in the Park, Big Beastie Hunt, Wildflower Meadow Raking Day, Film Festival Guided walk, Bulb Planting at Coronation Park, Bug Hotel Building.
- 223 volunteer days given to the parks (1561.5 hours/7)
- Completion of Chainsaw Sculpture Project with public launch in June.
- Development of Orienteering Course with anticipated launch at Easter 2019.
- Launch of Friends Facebook page - Castle Parks Berwick.
- Sign up to BTO Big Garden Birdwatch wildlife monitoring scheme - weekly survey.
- Appointment of NCC Horticultural Apprentice - available to Project 1 day per week.

#### **Summary table of volunteer hours and events attendees**

	<b>2014</b>	<b>2015</b>	<b>2016</b>	<b>2017</b>	<b>2018</b>
<b>Volunteer Hours</b>	604	1023	1394	1576	1561.5
<b>Event Attendees</b>	335	268	843	320	506

**Appendices 1 & 2**

**Work Programmes**

**Budget**

## **Appendix 3**

### **Final Evaluation Report**

## **Appendix 4**

### **Copy of Risk Assessment**

## **Appendix 5**

### **Volunteer Good Practice Guide**

## **Appendix 6**

### **Green Flag Award 2017 & Response to Feedback 2019**