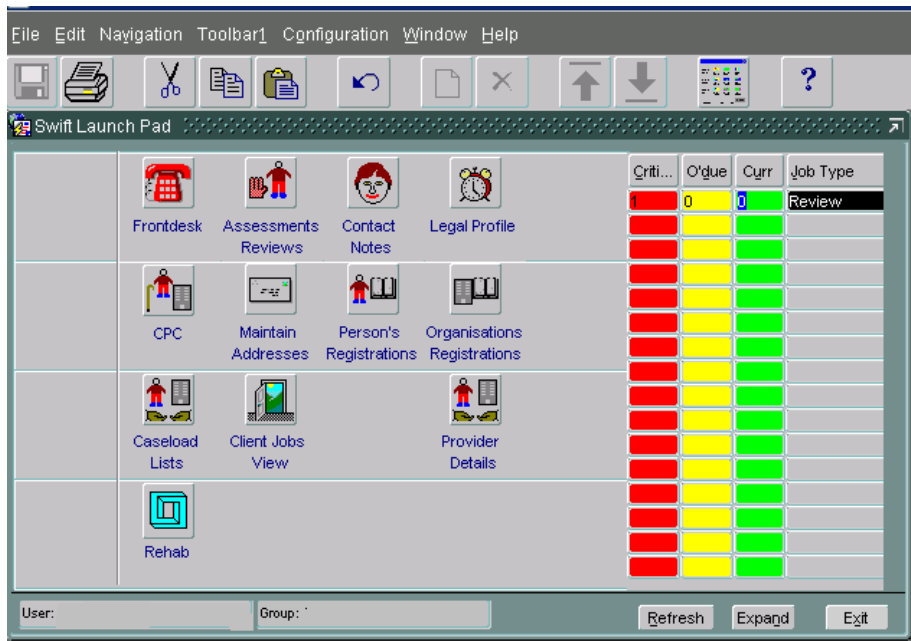


# CRIB SHEET – ACCESS TO RIO FROM SWIFT FOR EDT

## LOG INTO SWIFT

- Log into Swift in the usual way.
- Go to your launch pad

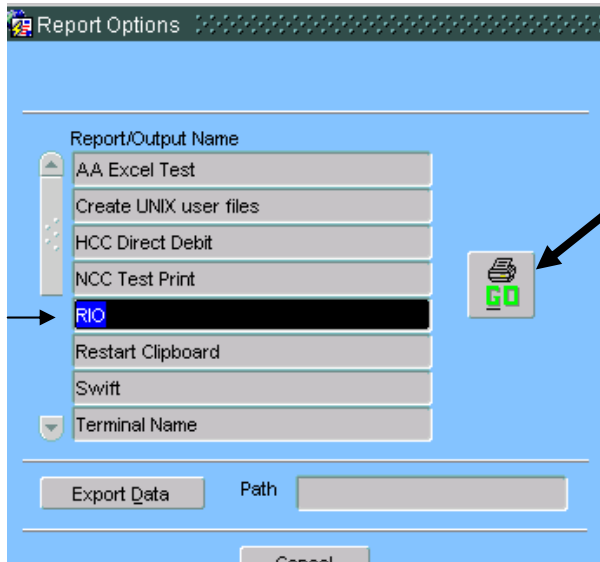



- Select the printer icon on the top toolbar [see below]



The following screen will appear

- Select Rio



- Click on 
- Rio will launch.



## LOG INTO RIO

- Select **LIVE**
- Log into Rio with your Rio user name and password.

