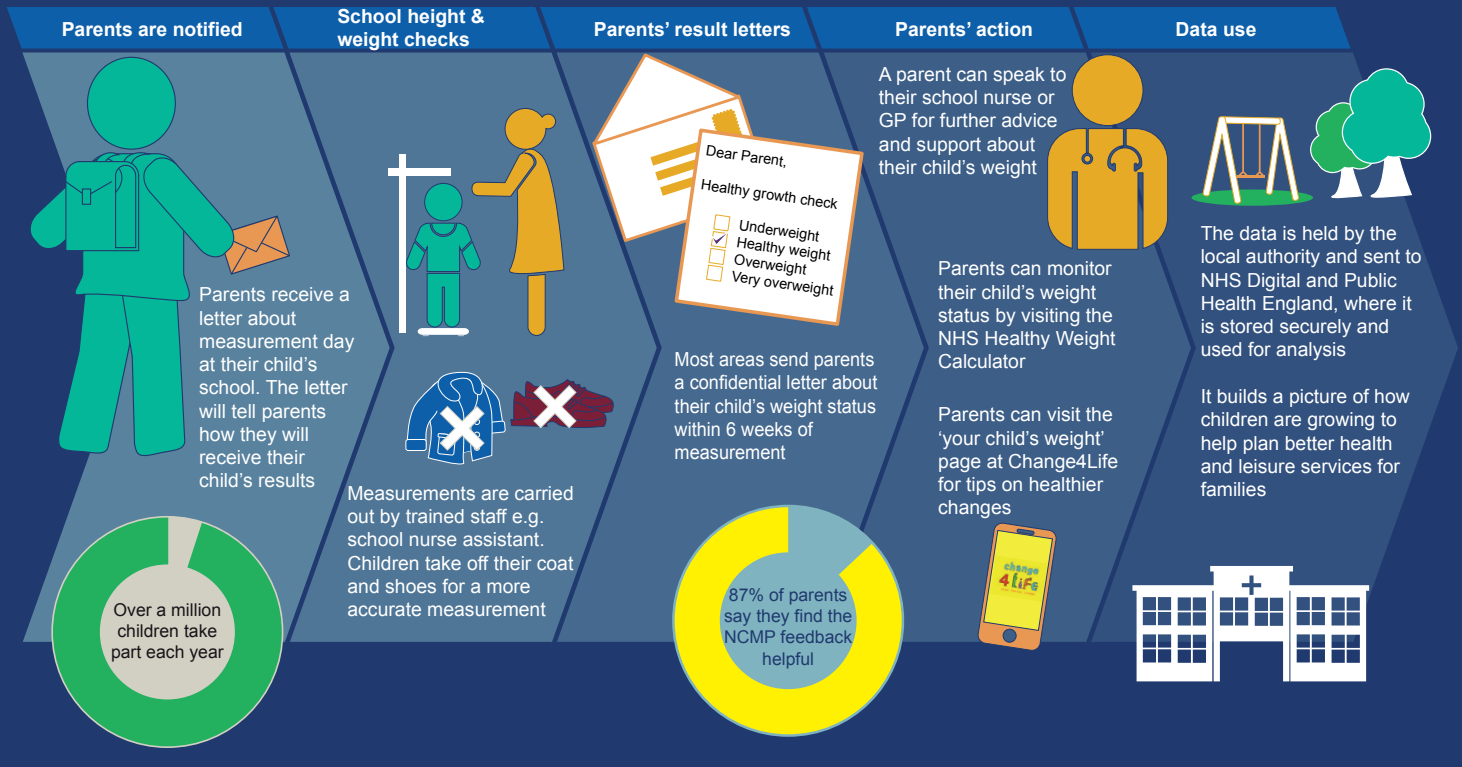


# School height and weight measurements

Every year, throughout England, more than a million children in Reception and Year 6 have their height and weight measured at school as part of the National Child Measurement Programme



## What we know from the data collected so far

- Most children in Reception and Year 6 are a healthy weight.
- Around one in ten children in Reception is very overweight. This doubles to one in five children by year 6.
- The number of very overweight children in Year 6 is increasing year on year.
- Most children who are overweight in Reception will remain so or become even more overweight for their age by year 6 without action to achieve a healthier weight.

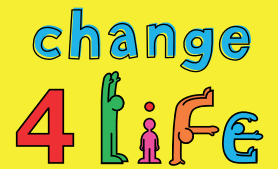
Because many children are overweight, we are all becoming used to seeing heavier children as the norm. It means we cannot always tell when a child is overweight. That is why many parents find it helpful to have an objective measurement of how their child is growing. More than 8 in 10 parents say this information is helpful and they can then make decisions about their child's lifestyle and wellbeing to make changes, or seek support if necessary.

## Why achieving a healthy weight is important

When children are a healthy weight, they feel better about themselves. They find it easier to play and learn. And they are more likely to grow up healthy too. Helping them to be a healthier weight when they are a child can set up their health and wellbeing for life.

You can encourage the whole family to enjoy eating healthily and being active which will help your child achieve and maintain a healthier weight. Children who see their parents, grandparents and carers following a healthy and active lifestyle tend to join in and learn by example. These habits become a normal part of everyday life for the whole family.

# Change4Life is here to help your family be healthy and happy



## Be Sugar Smart

Kids are having nearly three times more sugar than they should. Too much sugar is bad for teeth and can lead to weight gain. But don't worry, we have some simple swaps to help you be sugar smart and cut back.

- 1** Sugary drinks are bad for teeth and lead to decay. Swap fizzy drinks, juice drinks and flavoured milks for water, lower-fat milks and no added sugar drinks. Limit fruit juice to no more than 150ml a day and stick to meal times.
- 2** Eating breakfast every day is important, but some breakfast choices have much more sugar than you think. Opt for plain porridge, shredded wholegrain or plain wholewheat biscuit cereals. Help your kids towards their 5 A DAY by adding in chopped fruit.
- 3** Sugary snacks can all add up! Fruit and vegetables are always the best snack. But when choosing packaged snacks, stick to two a day max.



## See what's really inside your food and drink

Download our food scanner app for FREE and see for yourself the amount of sugar, salt and saturated fat in everyday food and drinks.



## change 4 life is here to help.

Search Change4Life and sign up for loads of healthy eating tips, tasty recipes, easy lunchbox ideas, fun activities and much more!



We're on Facebook too and want to hear from you!