

Northumberland PREVENT Pathway

PREVENT is about working together to safeguard and support people who might be vulnerable to radicalisation.

If a person is being radicalised, their day-to-day behaviour may become increasingly centred around an extremist ideology, group or cause. Some of the signs of radicalisation could be:

- spend increasing amounts of time talking to people with extreme views (this includes online and offline communication)
- changing their style of dress or personal appearance
- losing interest in friends and activities that are not associated with the extremist ideology, group or cause
- possessing material or symbols associated with an extreme cause
- trying to recruit others to join the cause

I'm concerned someone is at risk of radicalisation. What should I do?

- Report your concerns to the local authority that the person you're worried about lives. You can find the contact numbers and where to get in touch below.
- Remember: PREVENT does not criminalise those who are referred. We aim to safeguard and help those at risk.

Key Contacts

Emma Beniams

– Senior Community Safety Officer/PREVENT Coordinator prevent@northumberland.gov.uk

Adele Wright

– Prevent Lead Children's Services Adele.Wright@northumberland.gov.uk

Karen Wright

– Prevent Lead Adult Services Karen.Wright01@northumberland.gov.uk

Special Branch

– specialbranch@northumbria.pnn.police.uk

Onecall

- 01670 536400

Children's Triage

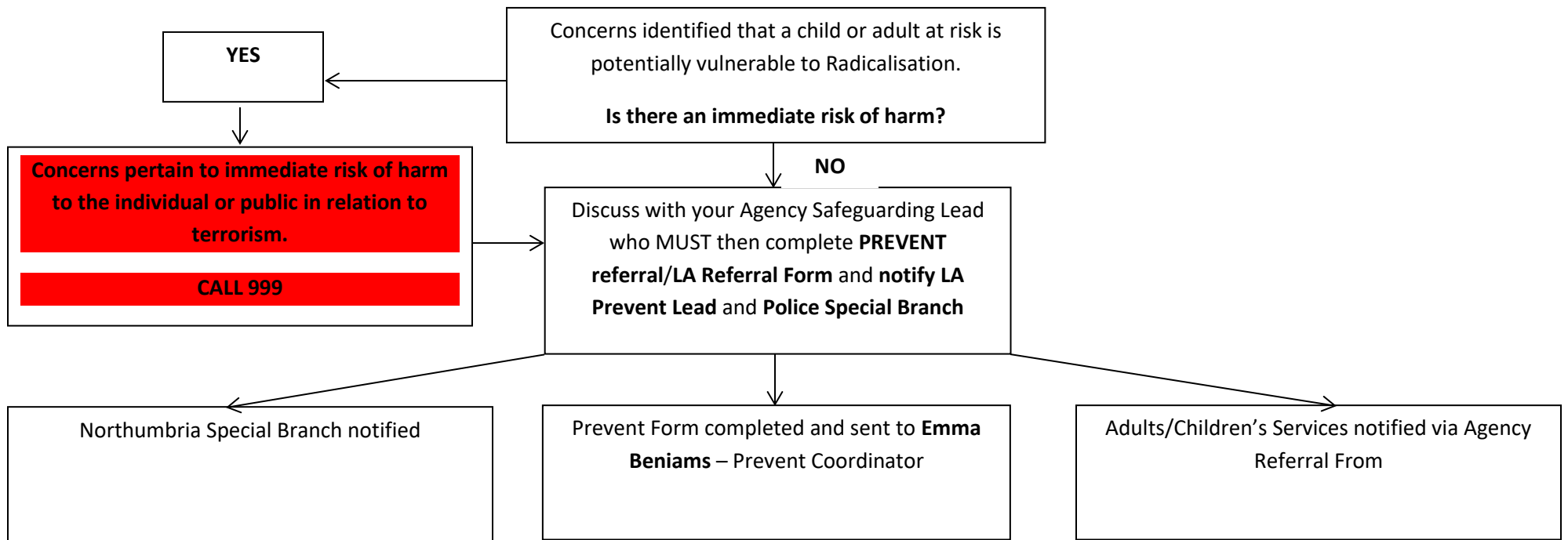
- childrentriage@northumberland.gov.uk

Adult Triage

- safeguarding.triage@northumbria-healthcare.nhs.uk

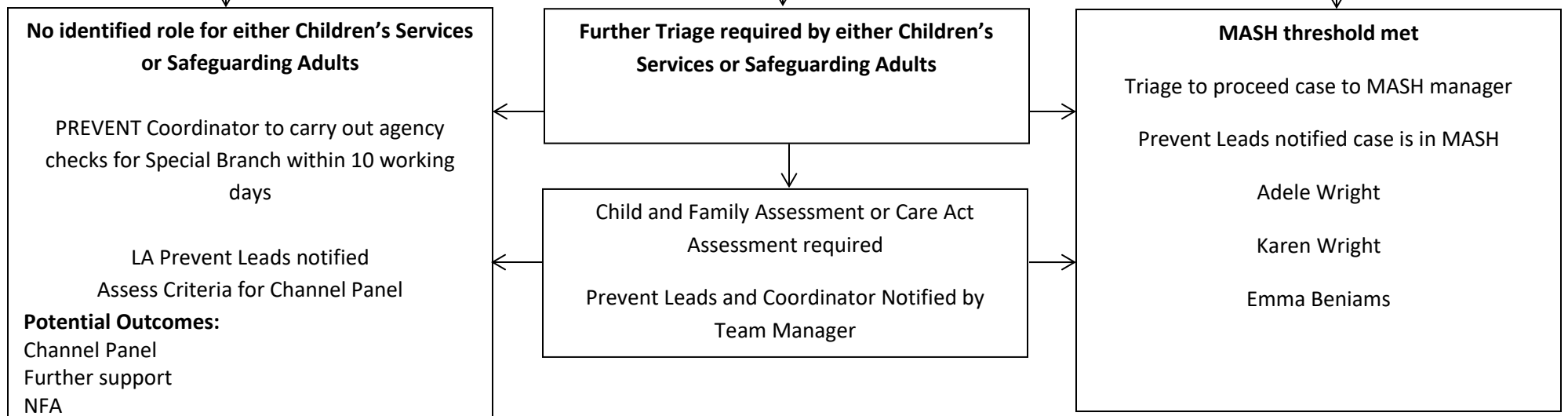
PREVENT referral Form

- www.northumberland.gov.uk



Referral received within either Children's Services/Adult Safeguarding or Prevent Coordinator

Discussion to take place between the 3 services to establish thresholds, roles and responsibilities



PREVENT cases meeting MASH threshold

Discussion between MASH Team Managers (Children's and Adults if applicable), Police and Prevent Coordinator

Agency Checks undertaken with the following partners:

- Adult Safeguarding
- Children's Services
- Police
- Northumberland Fire and Rescue
- Education – to include college check
- CNTW
- Probation
- CRC
- CCG
- Early Help Services

Information received and further discussion with Team Managers, Police and Prevent Lead for Safety Planning and thresholds to be discussed

Partner Agency Checks shared with PREVENT Coordinator

(Needs to be agreed at Strategic Level)

No Further Action/Support services identified

Outcome to be shared with PREVENT Coordinator
LA Prevent Leads notified
Assess Criteria for Channel Panel

Potential Outcomes:
Channel Panel
Further support

Child and Family Assessment Required or Care Act Assessment

Outcome to be shared with PREVENT Coordinator
LA Prevent Leads notified
Assess Criteria for Channel Panel

Potential Outcomes:
Channel Panel
Further support

Progress to strategy Meeting, Child Protection Enquiry or Safeguarding Adults Enquiry

Outcome to be shared with PREVENT Coordinator
LA Prevent Leads notified
Assess Criteria for Channel Panel

Potential Outcomes:
Channel Panel
Further support