



## Acknowledgement

The North Tyneside and Northumberland Safeguarding Adults Board would like to express their gratitude to the Central User Forum, who have produced this Easy Read version of the Annual Report 2018-19. On behalf of the Board I would like to thank them for their invaluable support.

*Paula M. Mead*

**Paula Mead**

North Tyneside and Northumberland SAB Independent  
Chair



# North Tyneside and Northumberland Safeguarding Adults Board



## Annual Report 2018 – 2019 EASY READ



**CONTENTS**

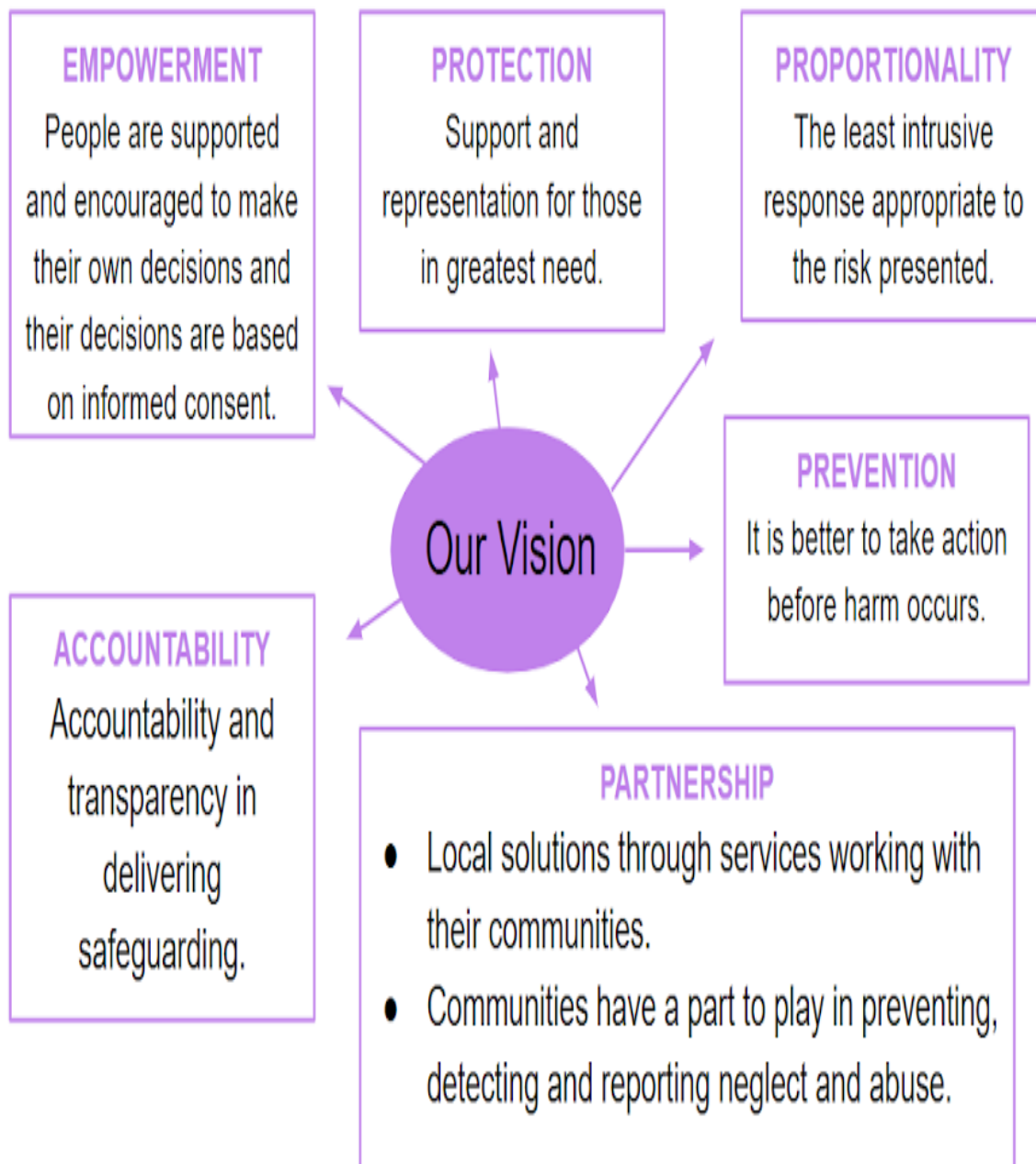
	<b>Page</b>
<b>1. Our vision .....</b>	<b>2</b>
<b>2. Who we are .....</b>	<b>3</b>
<b>3. Local Safeguarding data .....</b>	<b>4-5</b>
<b>4. Key achievements 2018-2019 .....</b>	<b>6</b>
<b>5. What we looked at this year .....</b>	<b>7</b>
<b>6. Our aims for next year .....</b>	<b>8</b>
<b>7. Safeguarding during ‘SAFE’ week .....</b>	<b>9</b>
<b>8. Support from the Central User Forum .....</b>	<b>10</b>
<b>9. What training have we delivered .....</b>	<b>11</b>
<b>10. Working with our partners .....</b>	<b>12</b>
<b>11. Partner updates.....</b>	<b>13</b>



## 1. Our Vision

We hope to ensure that all individuals are treated with respect and dignity to enable them to maintain a good quality of life and to improve the well-being of individuals.

We aim to ensure that individuals are safe from harm, abuse, discrimination, neglect or bad treatment.



## 2. Who we are

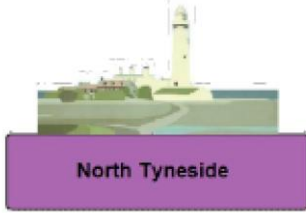
We are the North Tyneside and Northumberland Multi-Agency Safeguarding Adults Board (SAB).

We work with professionals from different agencies to ensure the health and safety of individuals, we do this by sharing information and making decisions together to ensure individuals are safeguarded.

Members of the North Tyneside and Northumberland SAB:

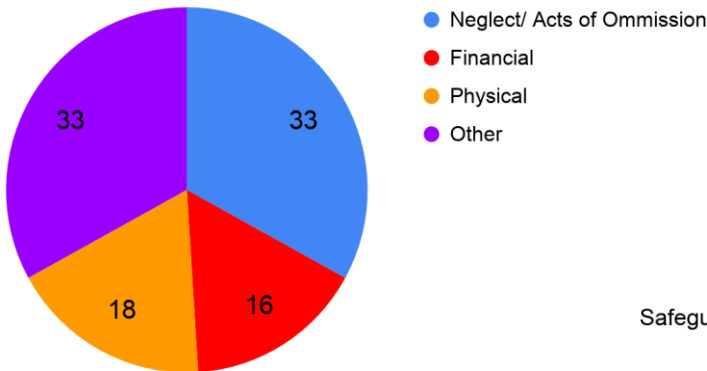
 <p>Northumberland County Council</p>	 <p>North Tyneside Council</p>	
		
		
		
		

### 3. Local Safeguarding Data 2018 -2019

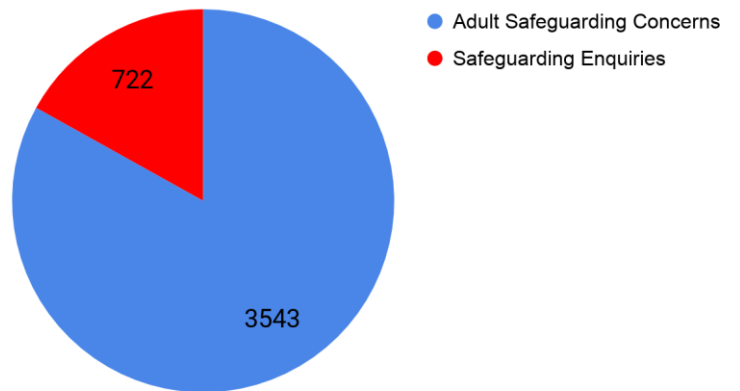


#### Types of Abuse in North Tyneside

Number reported types of abuse per 100 reports

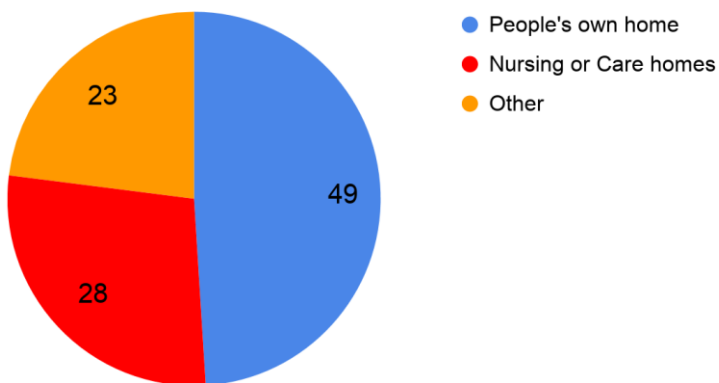


#### Safeguarding Concerns and Enquiries North Tyneside



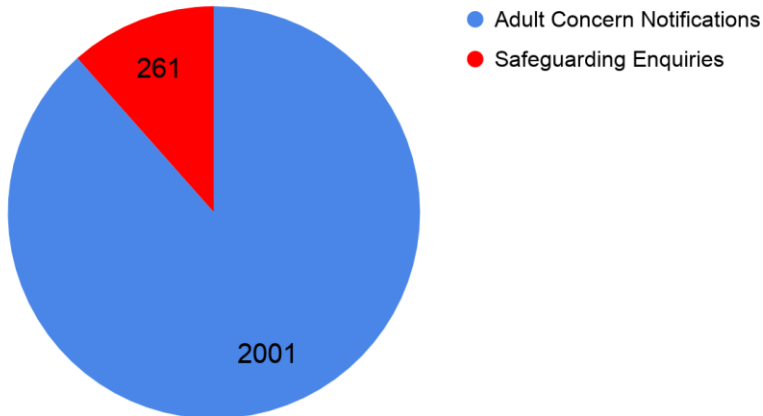
#### Location of Abuse

Per 100 cases reported

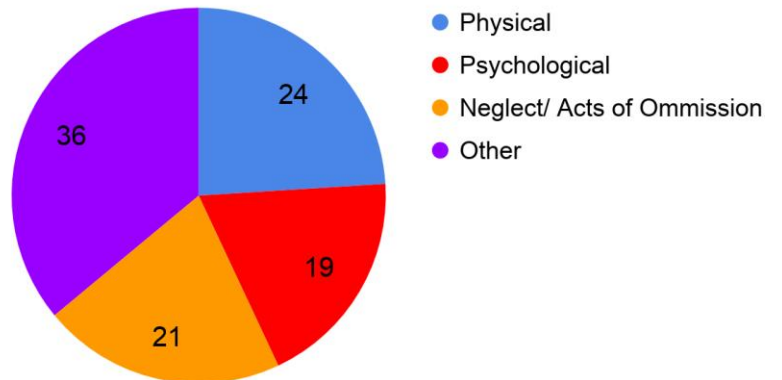




Safeguarding Concerns and Enquiries Northumberland

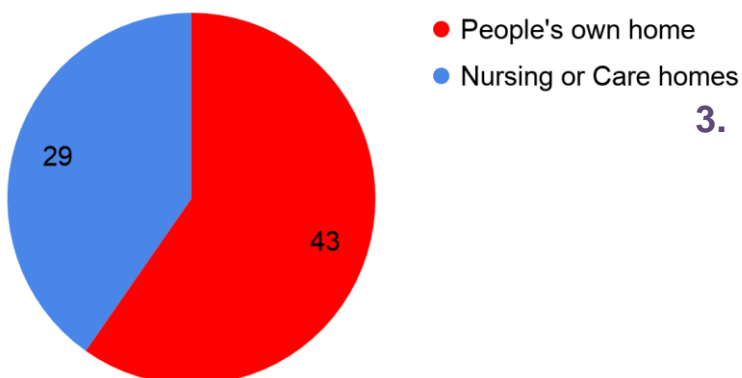


Types of Abuse Reported in Northumberland  
Per 100 reports



Location of Abuse in Northumberland

Location of abuse reported per 100 reports





## 4. Key achievements 2018-2019

### Continued Development of the MASH



In 2018-2019 we have developed the MASH (Multi-Agency Safeguarding Hub) team to ensure the best quality of safeguarding is given to individuals. We work with the police every day to look at concerns the police have about an individual's health, safety or well-being.

We have also worked on:

Strengthening responses to Sexual Exploitation



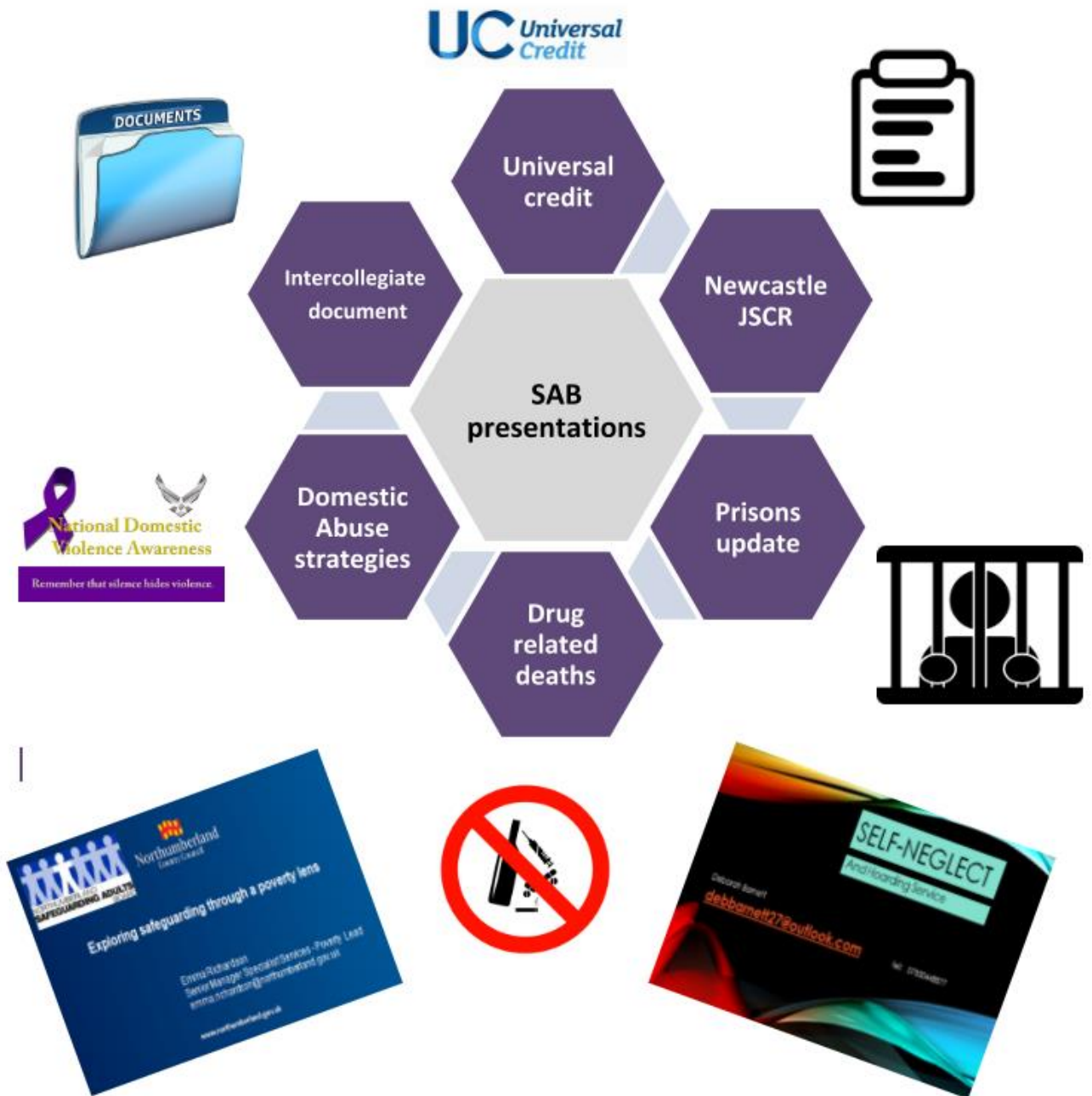
Communication between agencies



Quality Assurance



5. What we looked at this year



## 6. Our aims for the next year

• **Transitional Safeguarding arrangements** - ensure robust and consistent responses are in place to manage safeguarding for vulnerable young people.

• **Early identification and Prevention of Domestic Abuse.** To support the work of the Strategic forum.

• **Focus on forms of Criminal exploitation** - including County Lines, Sexual Exploitation, Cuckooing, Hate Crime and Criminal Gangs.

• **Making Safeguarding Personal** – further embedding and scrutiny of current arrangements.



## 7. Safeguarding during 'SAFE week'

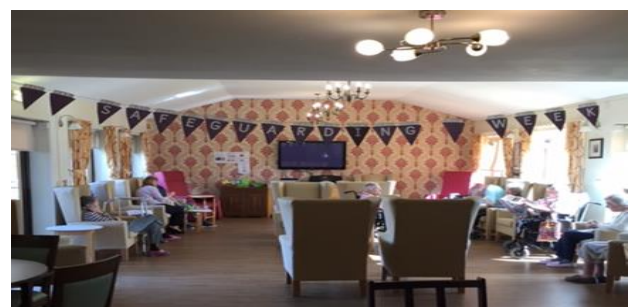
**SAFE (Safeguarding Awareness For Everyone) week**  
September 2018 SAFE week took place. The campaign seeks to raise awareness of protecting vulnerable adults and children.

Monday 17th to Sunday 23rd of September 2018



SAFEGUARDING AWARENESS FOR EVERYONE WEEK

A variety of events will be held during SAFE week to raise awareness about safeguarding adults and children in our communities. This is an issue that affects everyone in our society, but particularly those who may be more vulnerable to abuse, neglect and injury. Look out for events for children, adults, families and professionals, which will be held all week in Northumberland and North Tyneside



## 8. Support from the Central User Forum



The Central User Forum is a self-advocacy group for Adults with learning disabilities in Northumberland. They work in partnership with Northumberland County Council's Learning disability Partnership board and other self-advocacy groups in the area.

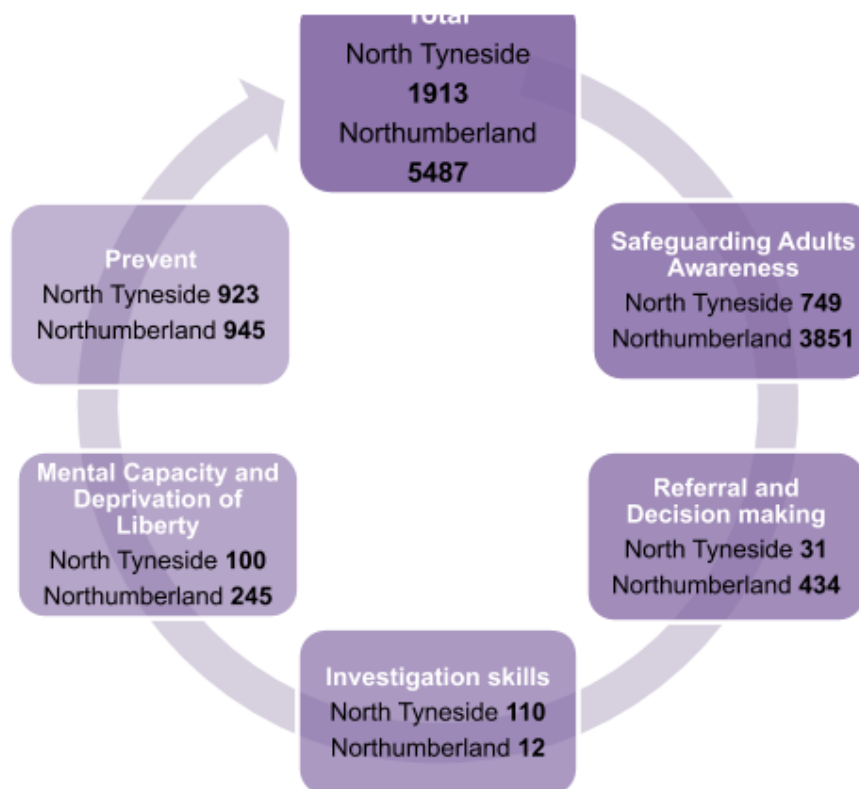
Their main goal is to increase the involvement of people with Learning disabilities and autism, enabling them to have a voice in the development of social care.

This year the Forum are supporting the Safeguarding Adults Board to produce an easy-read version of their Annual Report, to ensure the information is accessible to a range of people, including those with Learning disabilities.



## 9. What training have we delivered

The Safeguarding Adults training programme provides high quality learning and development opportunities for a diverse workforce, and is regularly reviewed to ensure it continues.



## 10. Working with our partners

### Partner spotlight – Northumbria Healthcare Trust

#### **The Domestic Abuse Health Advocate Role in Northumbria Healthcare Trust**

The Domestic Abuse Health Advocate was set up to support victims of domestic abuse and improve the skills of staff in three main areas; A&E, Gynaecology and Maternity. The DAHA has been described as very helping for both victims of domestic abuse and staff who support these individuals.

Staff have been given pocket size booklets to help them with ways to quickly find and use plans, pathways and support services relating to domestic abuse

## 11. Partner updates

<p>Following the learning identified in two local Domestic Homicide Reviews we have improved the Domestic Abuse Pathway and Coding – <b>North Tyneside CCG</b></p>
<p>Procurement of a comprehensive single agency training package for primary care staff in relation to safeguarding adults, mental capacity act, deprivation of liberty, prevent and domestic abuse – <b>Northumberland CCG</b></p>
<p>Referrals submitted for adults who are of concern to the police for reasons under the wider definition of Vulnerability as well as those meeting the Safeguarding threshold, are now all subject to multi-agency triage within the Multi agency safeguarding hub (MASH) arrangements for adults - <b>Northumbria Police</b></p>
<p>A series of leaflets have been devised by the Learning Disability Liaison nurses along with people with learning disabilities for patients coming into hospital – <b>Northumbria Healthcare Trust</b></p>
<p>We have had a particular focus on combatting domestic abuse, working with the perpetrators of sexual offending, modern day slavery and human trafficking and meeting the needs of service users with learning difficulties/disabilities – <b>National Probation Service</b></p>
<p>We have recruited a dedicated Partner Link Worker resource and developed a relationship with Victims First – <b>Community Rehabilitation Company</b></p>
<p>The Safeguarding and Public Protection (SAPP) Team aims to support all trust staff to keep children, young people and adults at risk safe, and to meet statutory obligations – <b>NTW</b></p>
<p>We have delivered tailored safeguarding training to all supervisory and middle managers (delivered by Adult Safeguarding Team) – <b>Northumberland Fire and Rescue</b></p>
<p>We have refreshed and streamlined the Safeguarding Adults procedure to make it as easy as possible for front line staff to report concerns – <b>Tyne and Wear Fire and Rescue</b></p>
<p>We are progressing the action plan required to achieve Domestic Abuse Housing Alliance (DAHA) accreditation, working closely with colleagues in Strategic Housing to ensure that a consistent approach to support for vulnerable tenants is achieved – <b>Housing Services Northumberland</b></p>