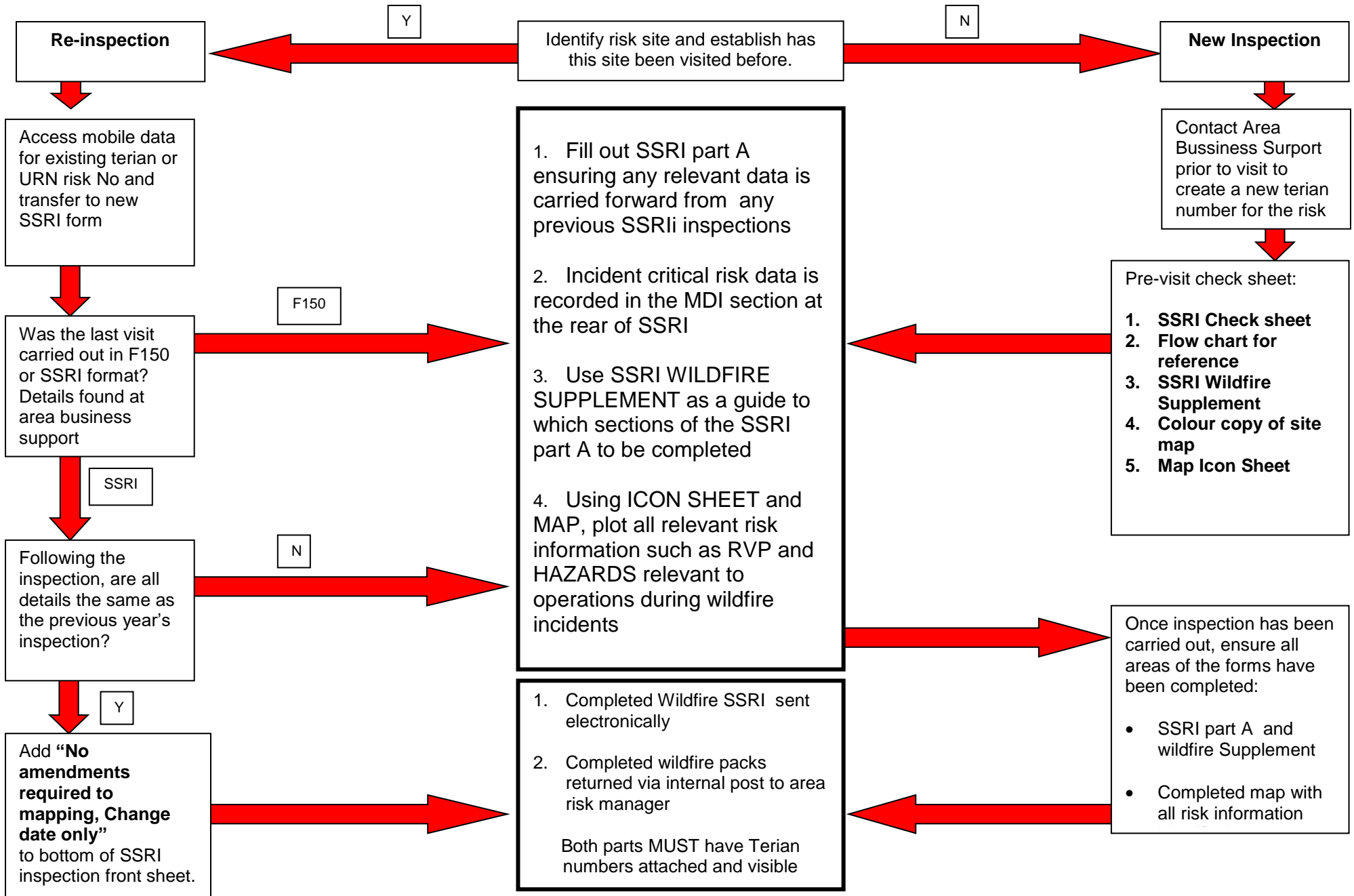


WILDFIRE SSRI RISK MAPPING FLOWCHART



Gathering Risk Information for the purpose of wildfire operations is critical to their success, its important therefore that we accurately map new risks, gathering all relevant information in preparation for the wildfire season. Existing risk information should also be reinspected on an annual basis to ensure the level of risk information held about a site has not altered and remains accurate. This flowchart is designed to give operational crews the confidence to carry out these operational inspections in the correct format to ensure that detailed information is obtained and presented for entry onto mobile data terminals in a format that functional to the end user.