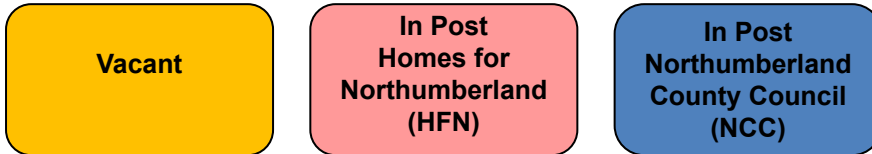


# Property Services - Structure Charts

## Key:



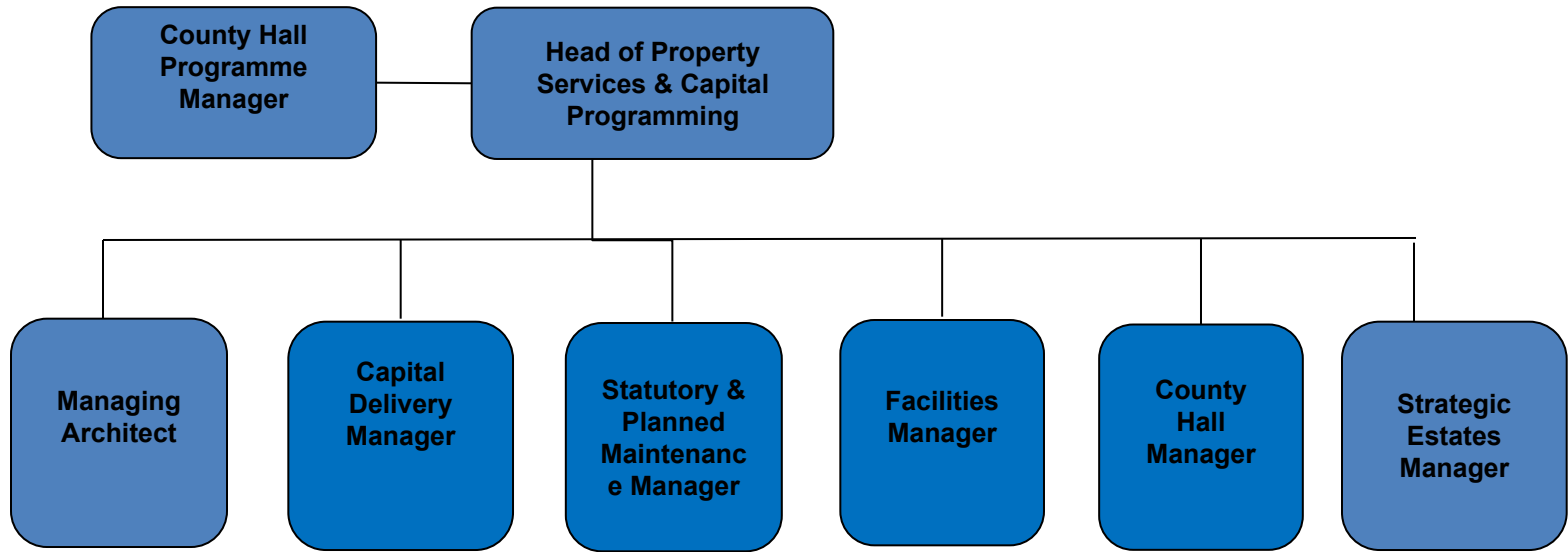
## Contact Details:

Contact Centre Telephone Number - 0345 600 6400

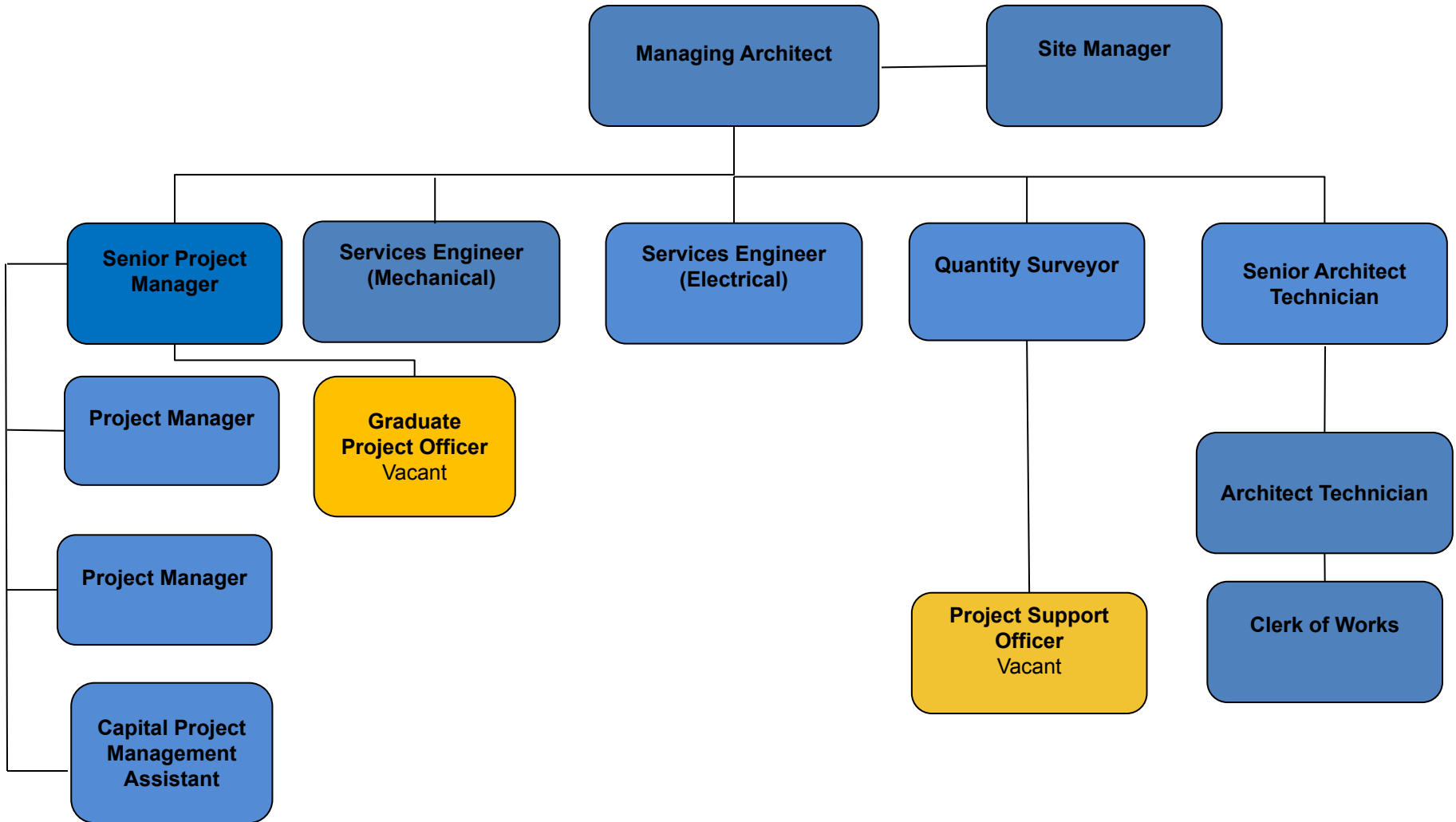
Further details on how to contact the Council can be found by using the following link:

<https://www.northumberland.gov.uk/About/Contact/contacts.aspx#contactus>

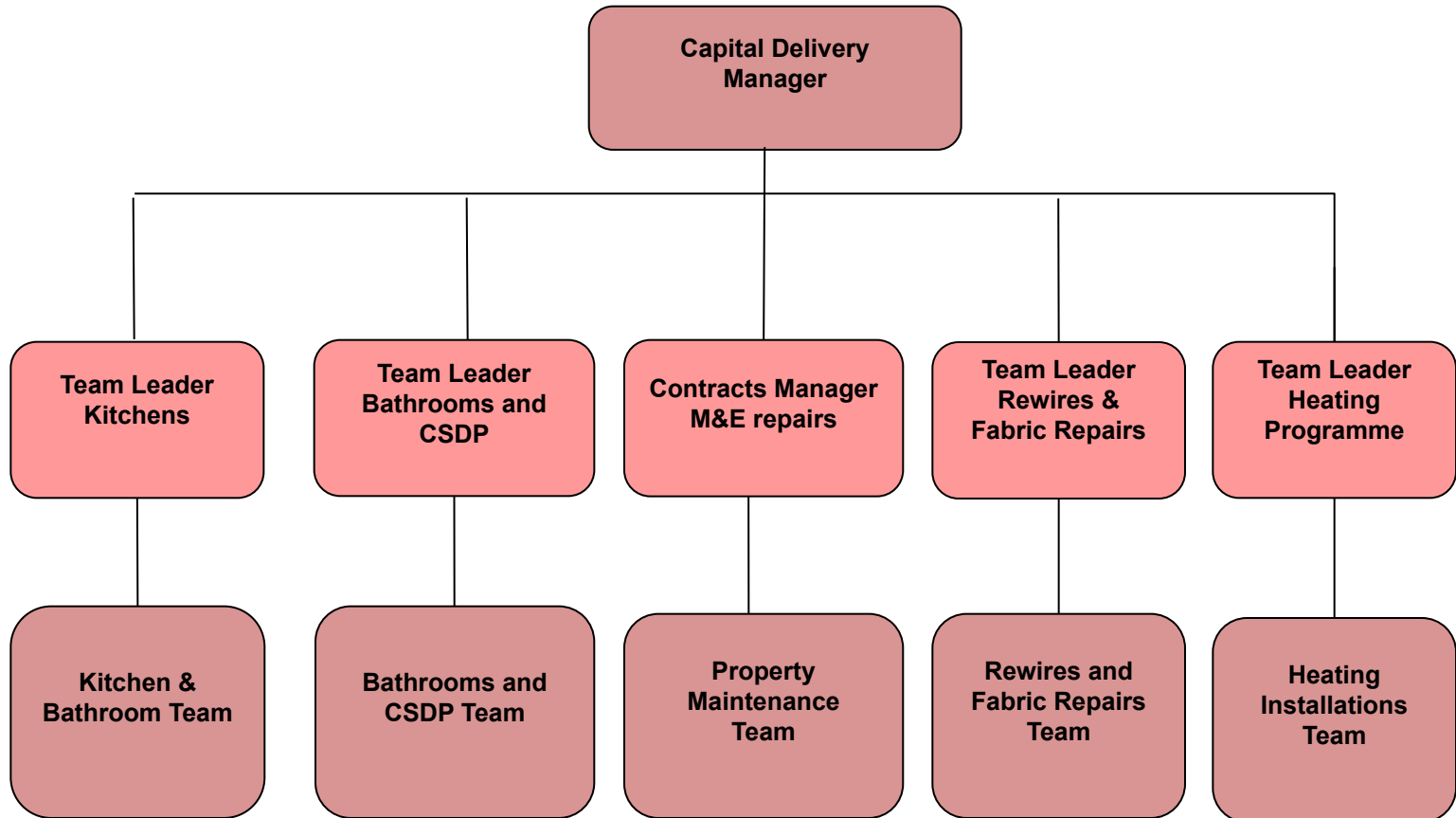
# Property Services Management Team



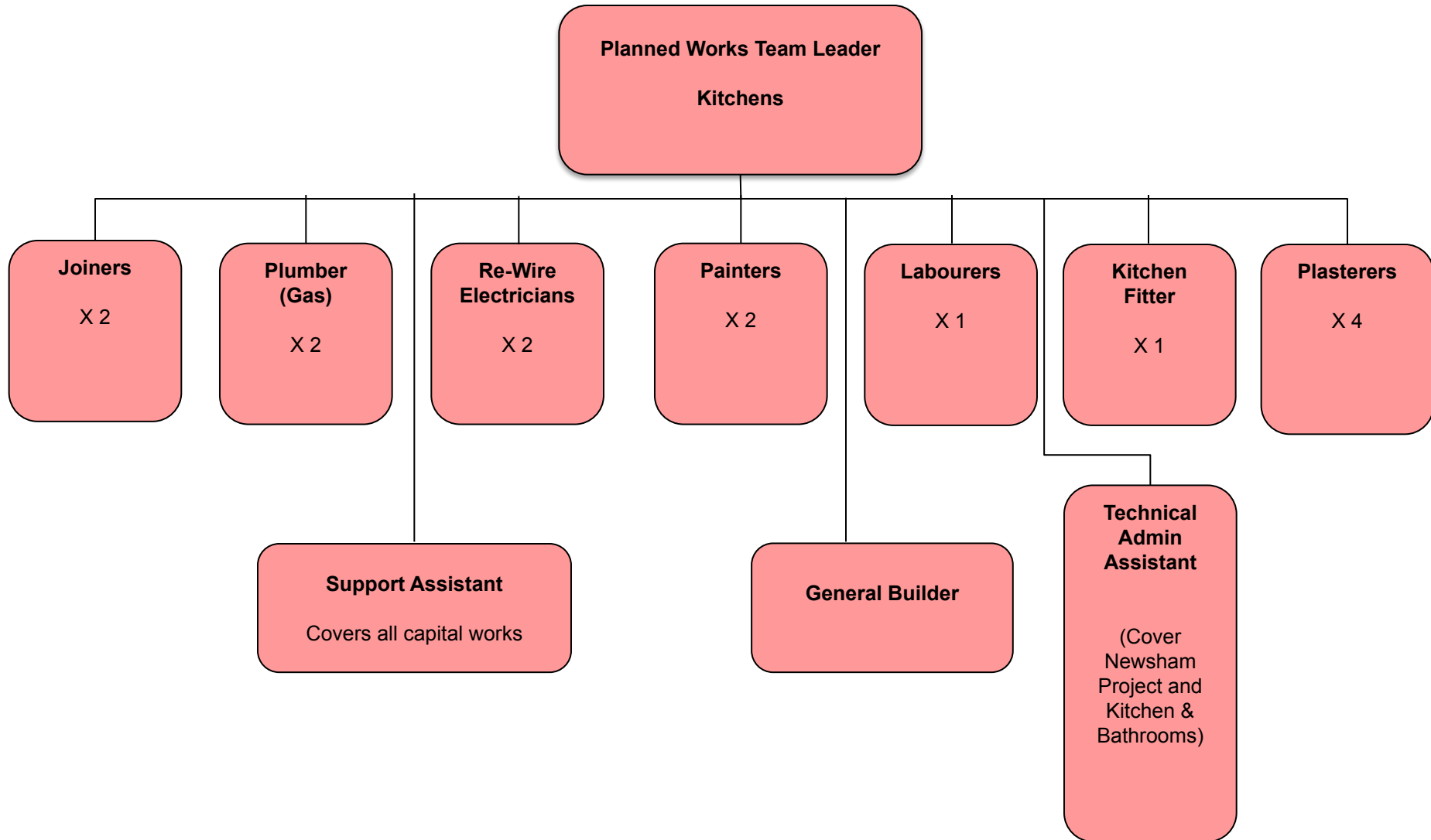
# Design Team



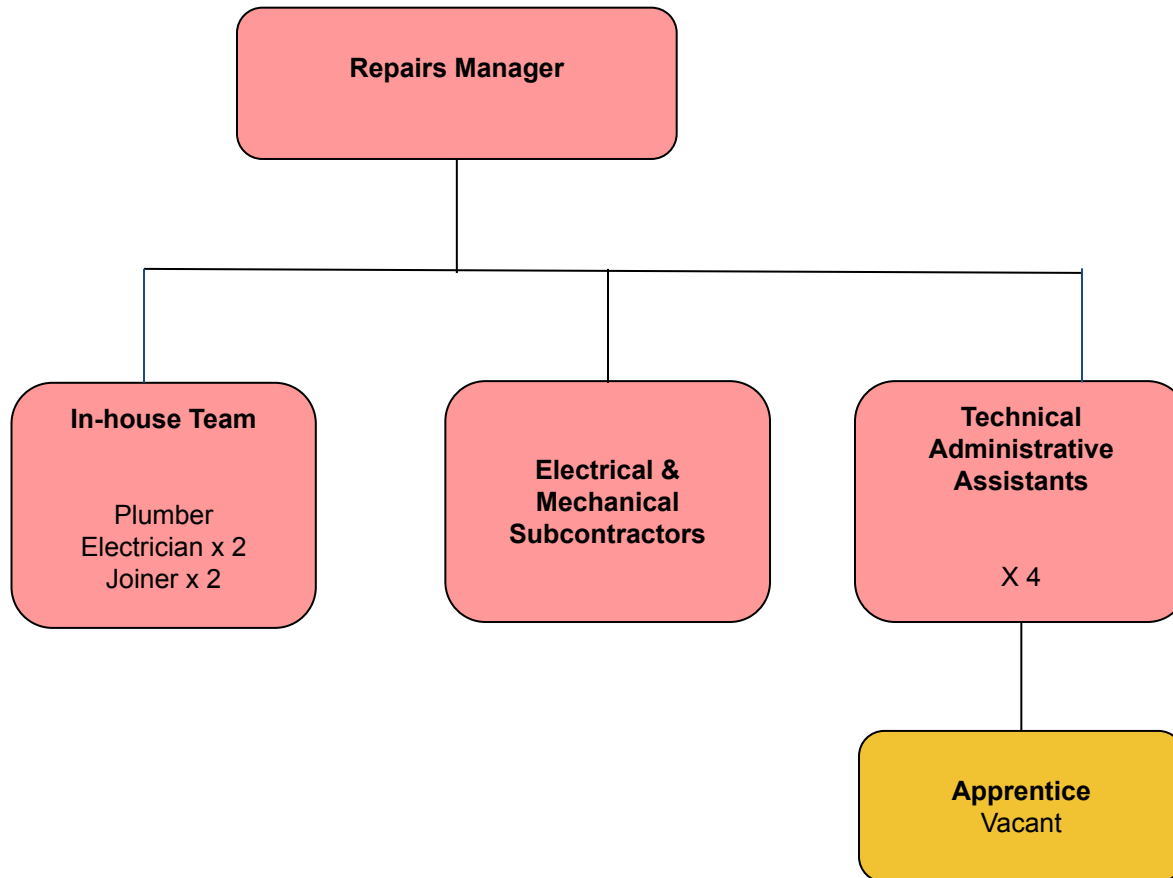
# Capital Delivery Team



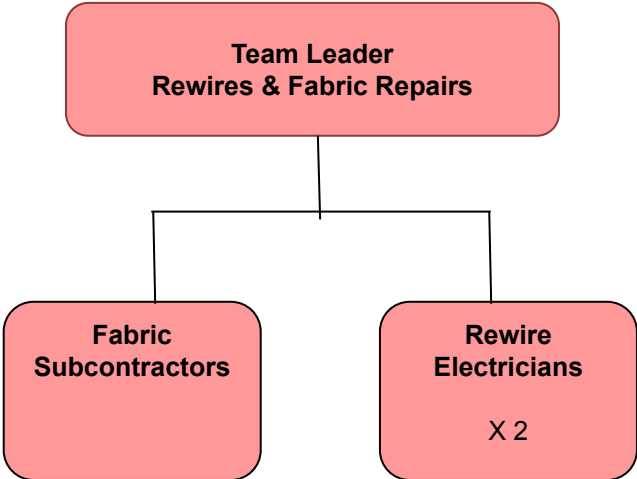
# Kitchen and Bathroom Team



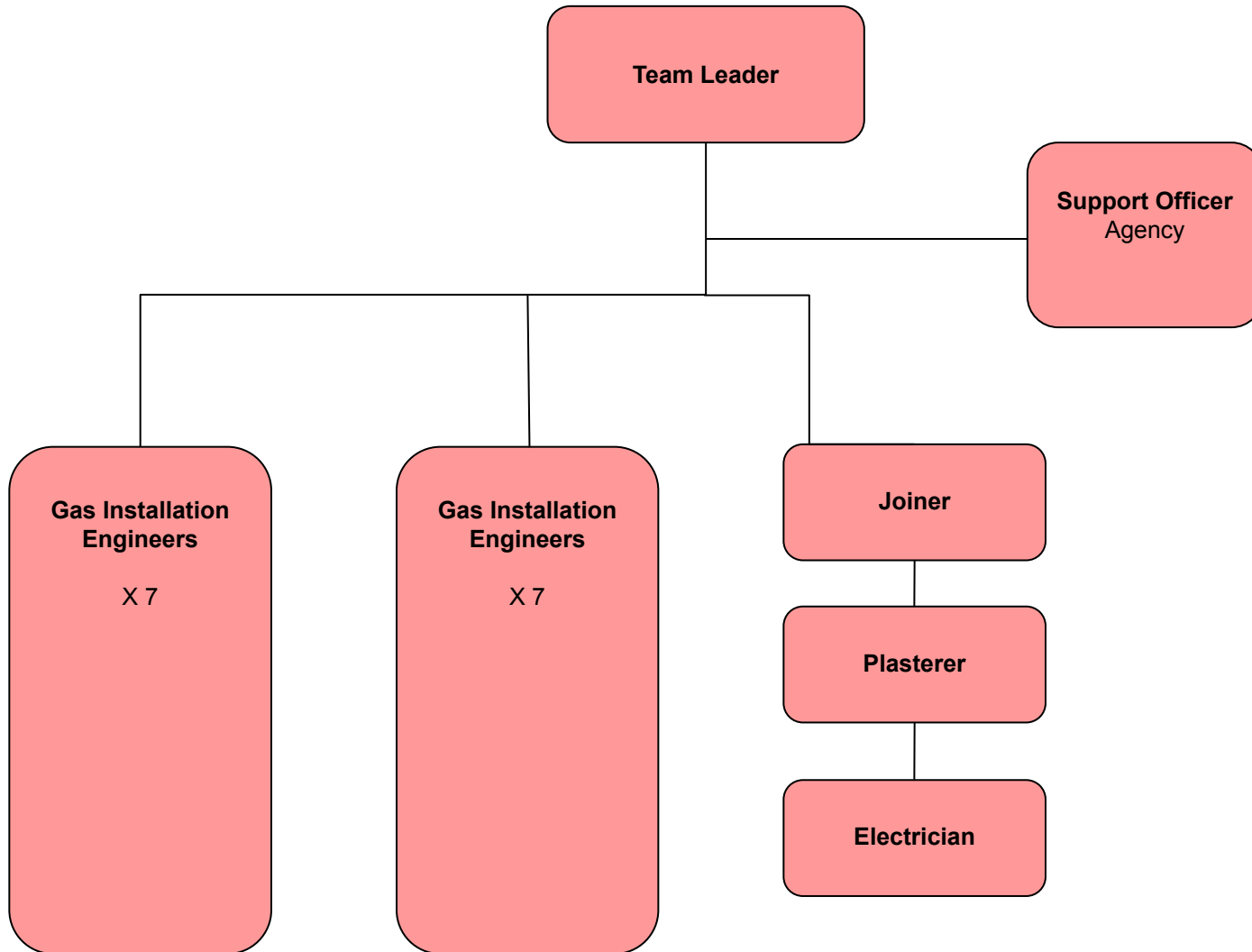
# Property Maintenance Team - M&E



# Renewables Rewire & Fabric Repairs Team

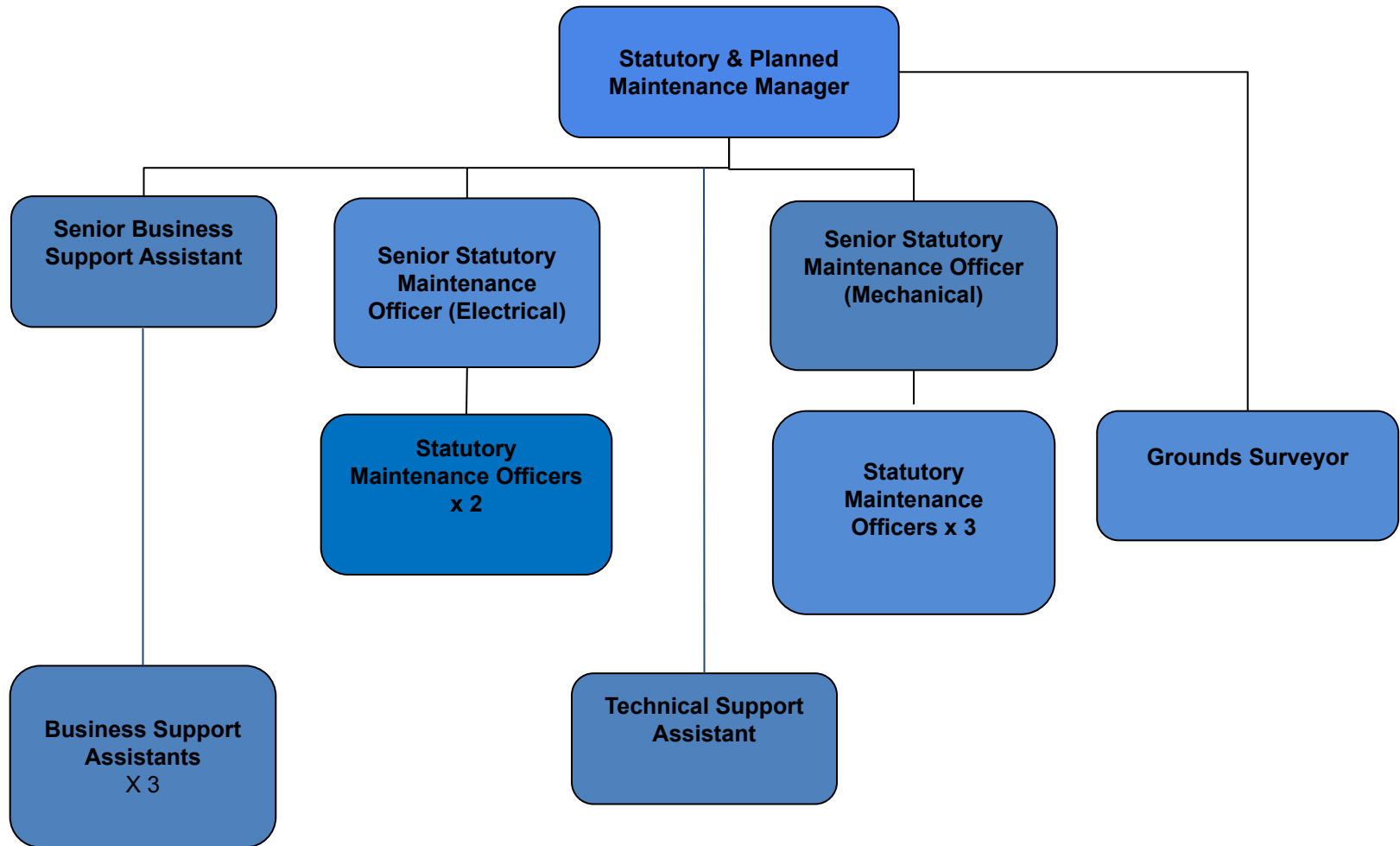


# Heating Installation Team

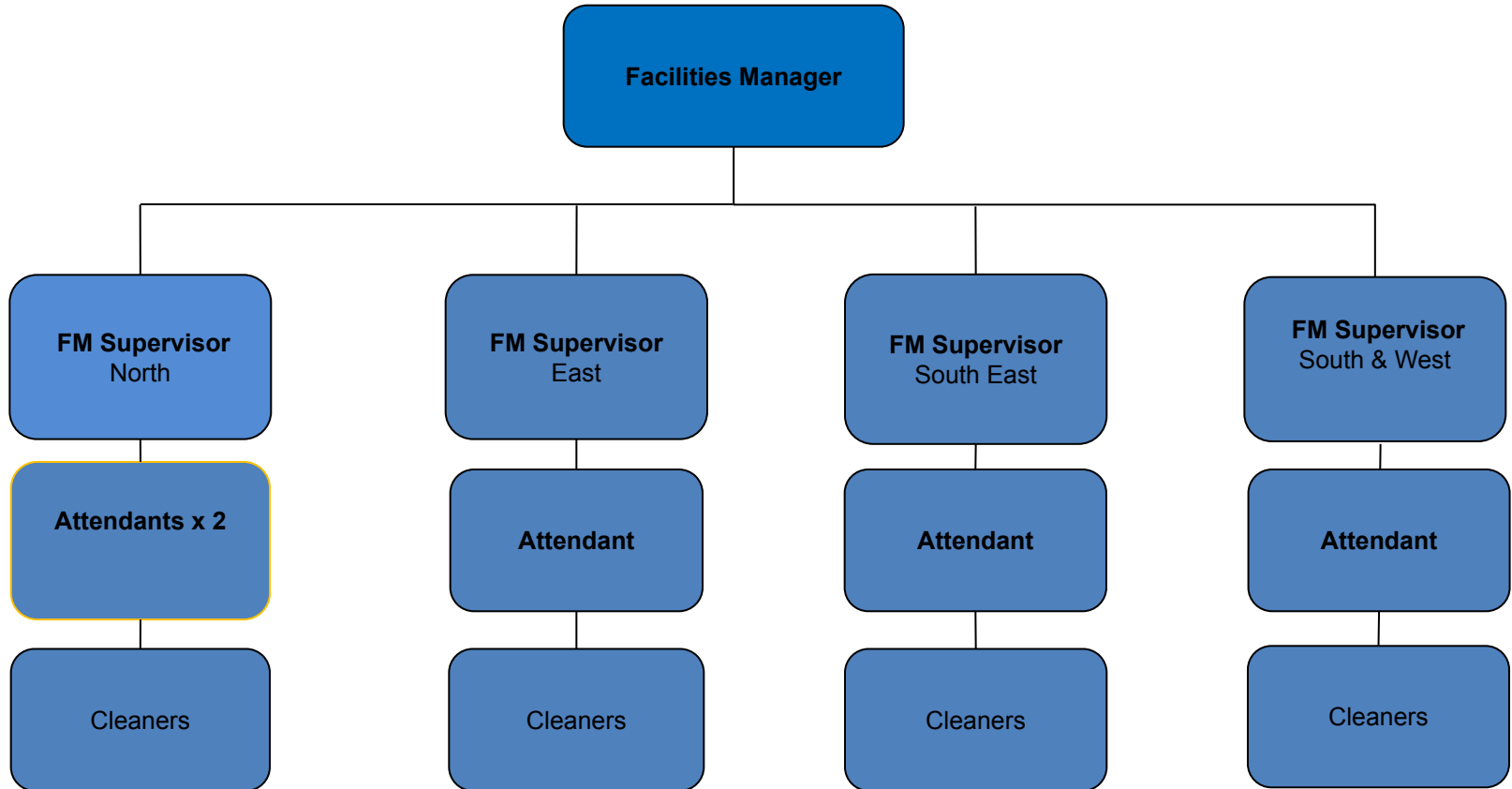




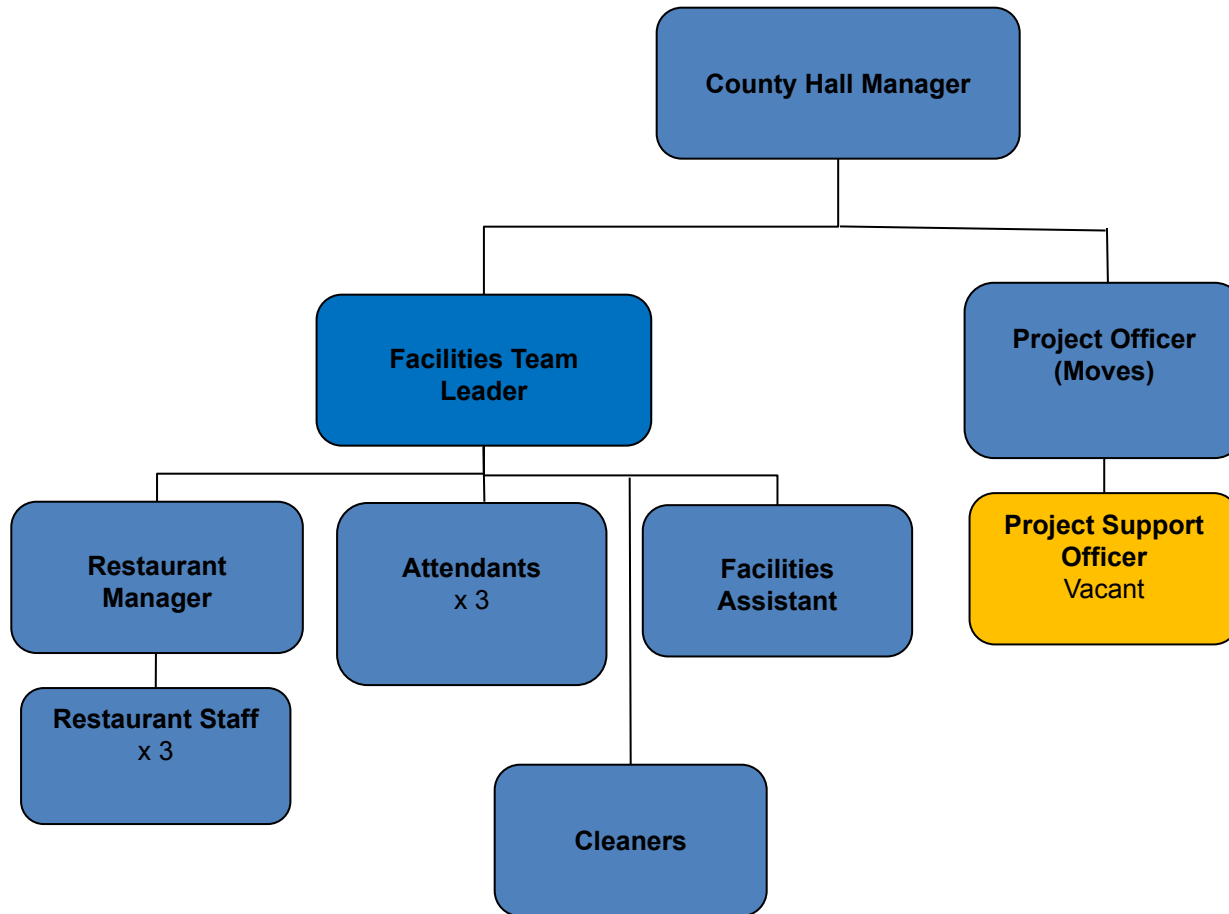
# Statutory & Reactive Maintenance Team



# Facilities Management Team



# County Hall Facilities Management Team



# Strategic Estates Team

