

Calling Farmers and Landowners

Help shape the future of our land and nature through our LNRS.



Northumberland County Council is spearheading the production of the Local Nature Recovery Strategy (LNRS) for Northumberland, Newcastle, and North Tyneside.

What is the LNRS?

The LNRS aims to develop and implement locally tailored solutions across England to:

- Enhance our natural environment
- Address species loss
- Build resilience in landscapes



Why is this important?

By contributing to our LNRS, you can help shape a practical and achievable strategy that:

- **Influence national policy:** your input will shape strategies that impact national decisions
- **Drive local action:** contribute to a plan that will benefit your area and its wildlife
- **Innovative solutions:** feed into a process that explores new land management funding opportunities



Northumberland
County Council

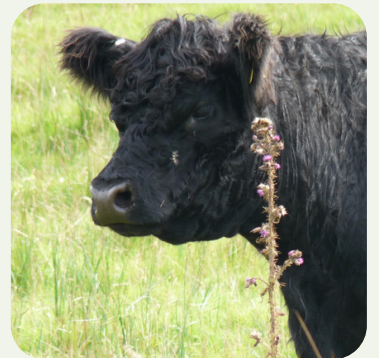


Your voice matters

This is a chance to have your say on what matters to you about the wildlife on your land and in your area, including your improvement ideas and the challenges you face.



No one knows the land like someone who has been working on it for generations. Which is why we want our LNRS to reflect the views and priorities, experience, knowledge, and the understanding of our farmers, land managers, landowners, and local organisations who know the land inside out.



Make your views count and help us build a vibrant future for Northumberland, Newcastle, and North Tyneside.

Please take a few minutes to share your thoughts through our anonymous survey by scanning the QR code on your device or going to **<https://nland.cc/LNRS>**



Northumberland
County Council