

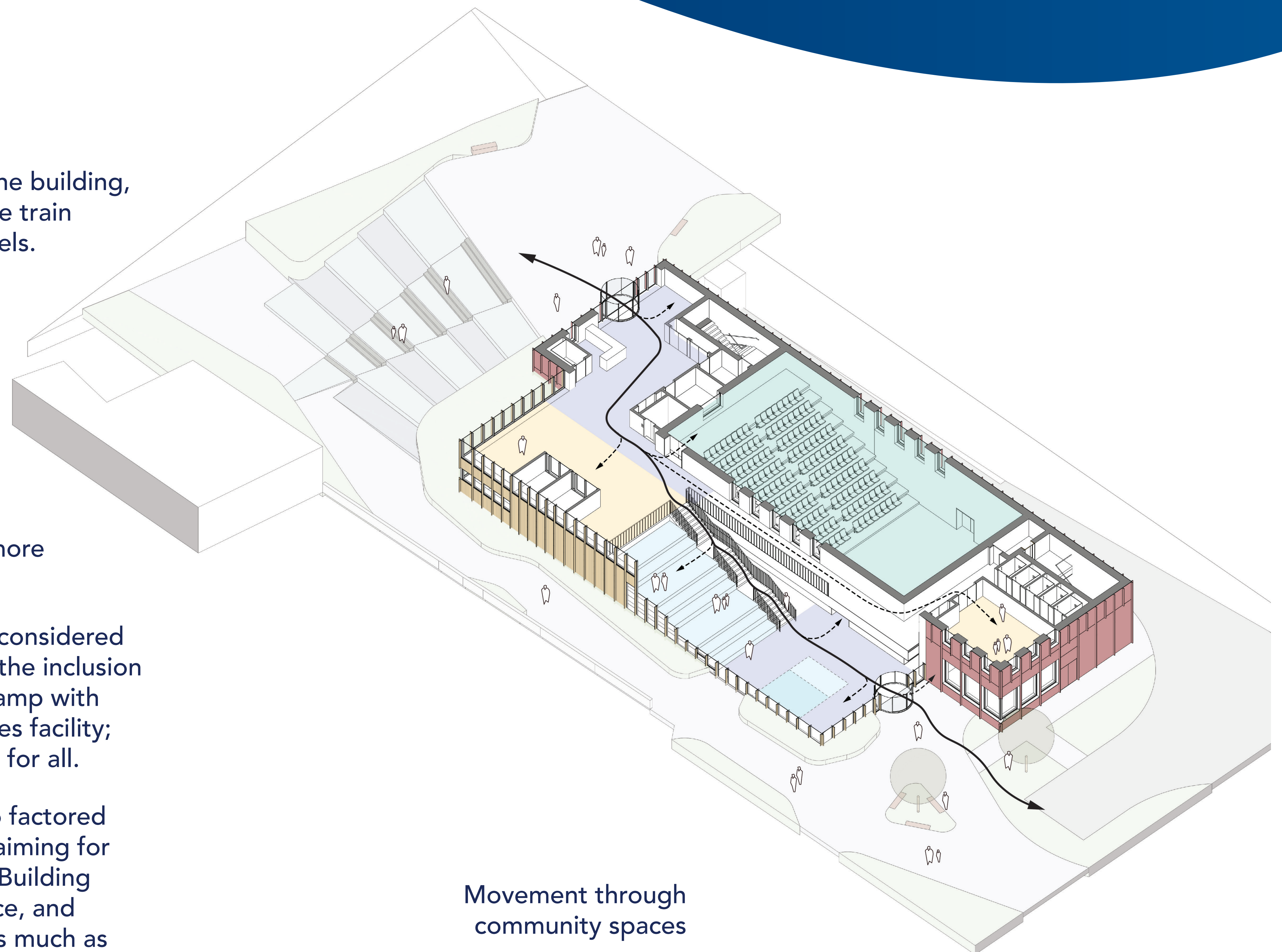
REDEVELOPMENT OF WANSBECK SQUARE

Building

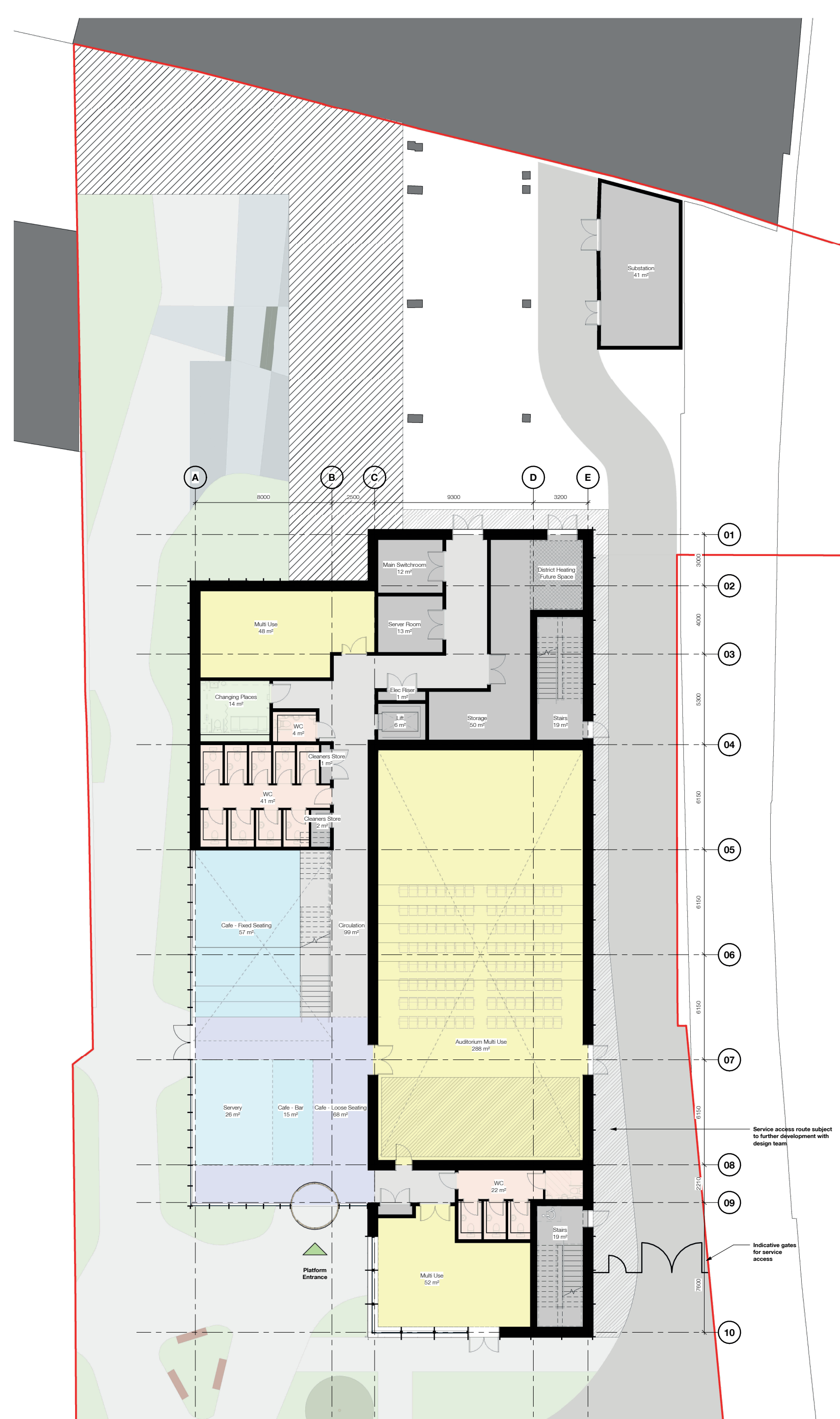
A central path is created through the building, connecting the entrances across the train platform and Wansbeck Square levels. The café acts as the heart of the building, being the active spaces linking movement and visual interest across the building. The flexible nature of multi-use spaces allow for a variety of activities. The public spaces are placed on the ground floor to attract footfall from the street level, and the levels above house more private spaces.

Accessibility is a significant aspect considered in the building design, reflected in the inclusion of an internal lift, a wide external ramp with a slow gradient, and changing places facility; designing it to be an inviting space for all.

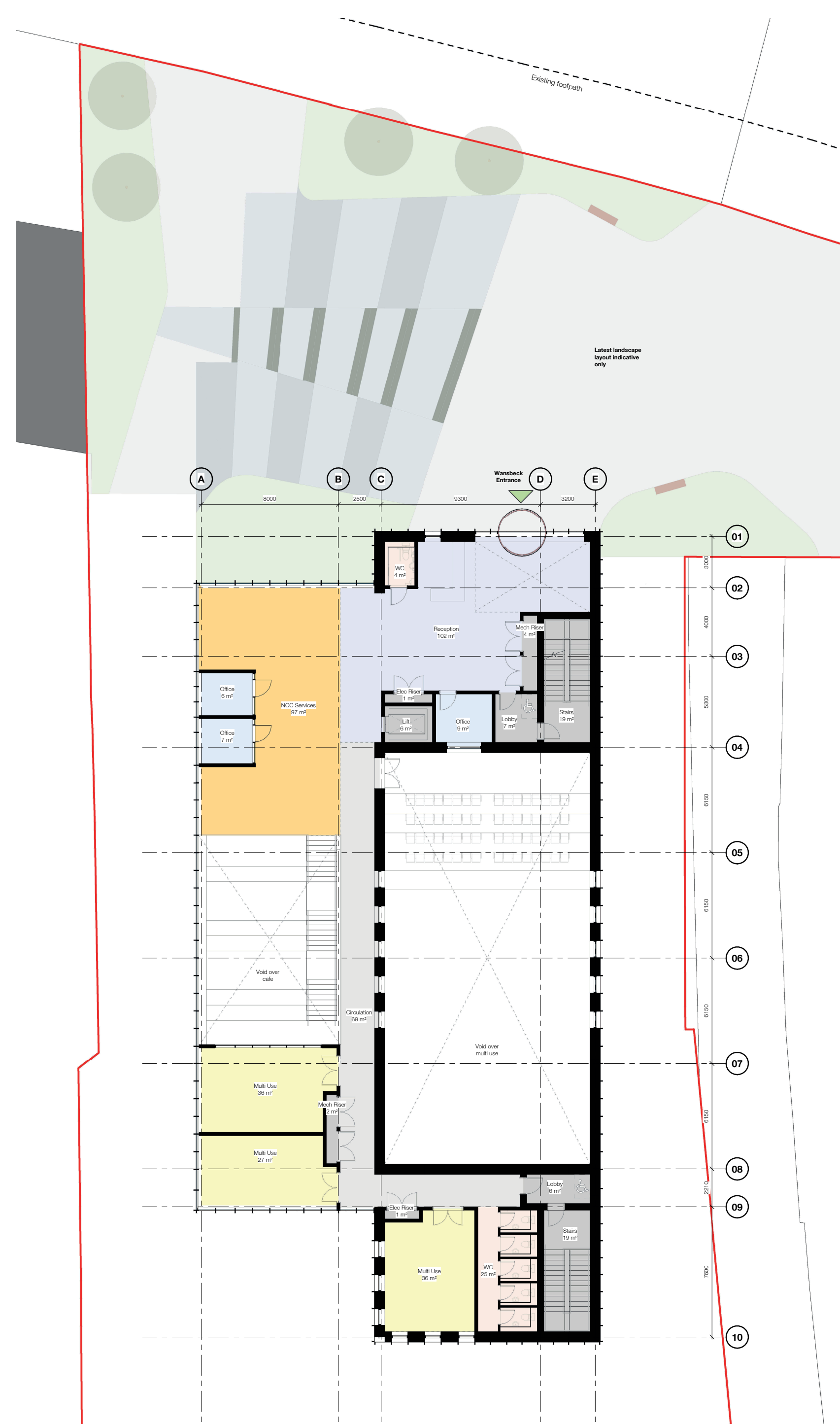
Key sustainability targets were also factored in throughout the design process, aiming for a 20% improvement of current UK Building Regulations on thermal performance, and utilising low carbon technologies as much as possible.



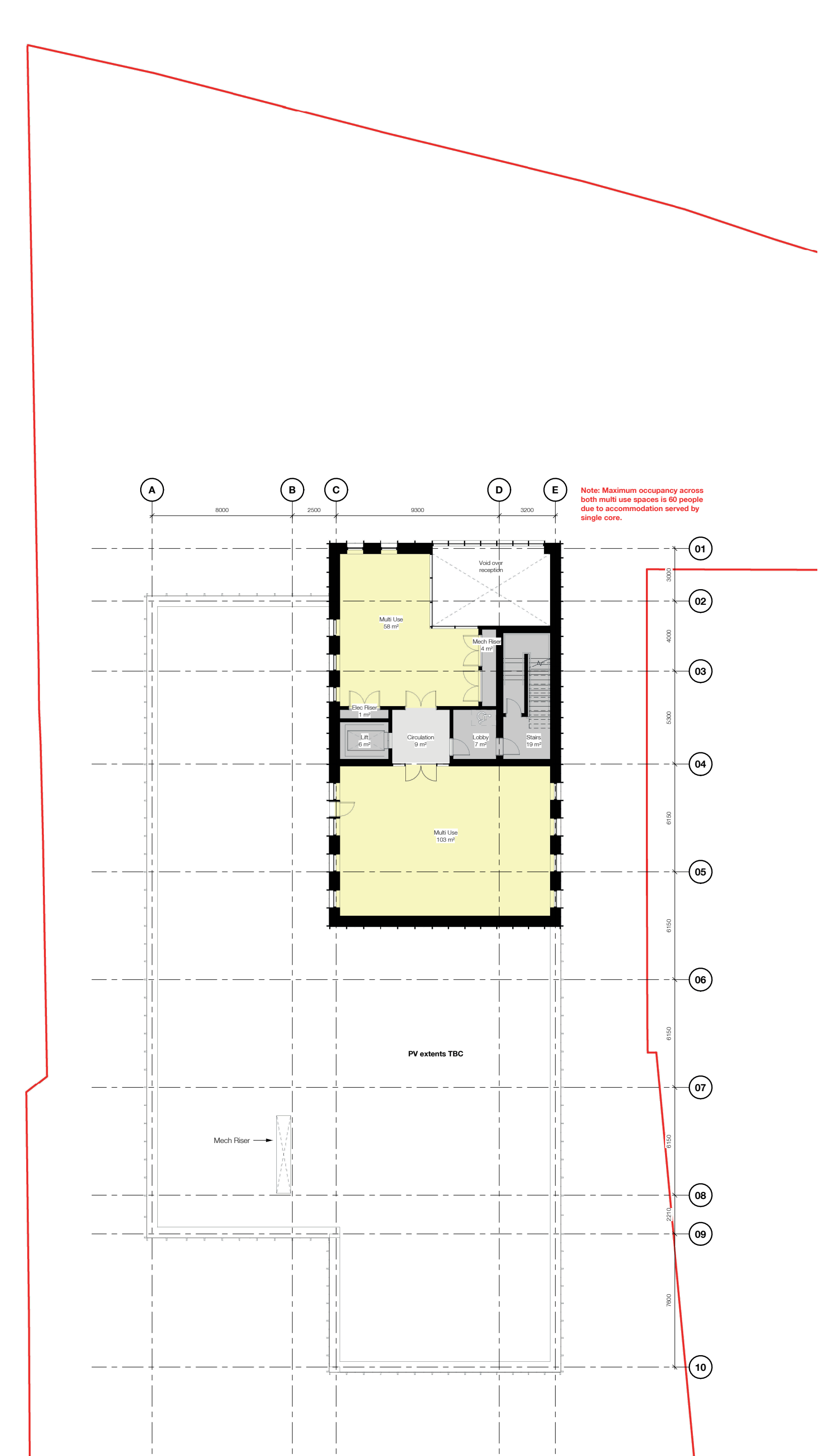
Movement through
community spaces



Level 00



Level 01



Level 02