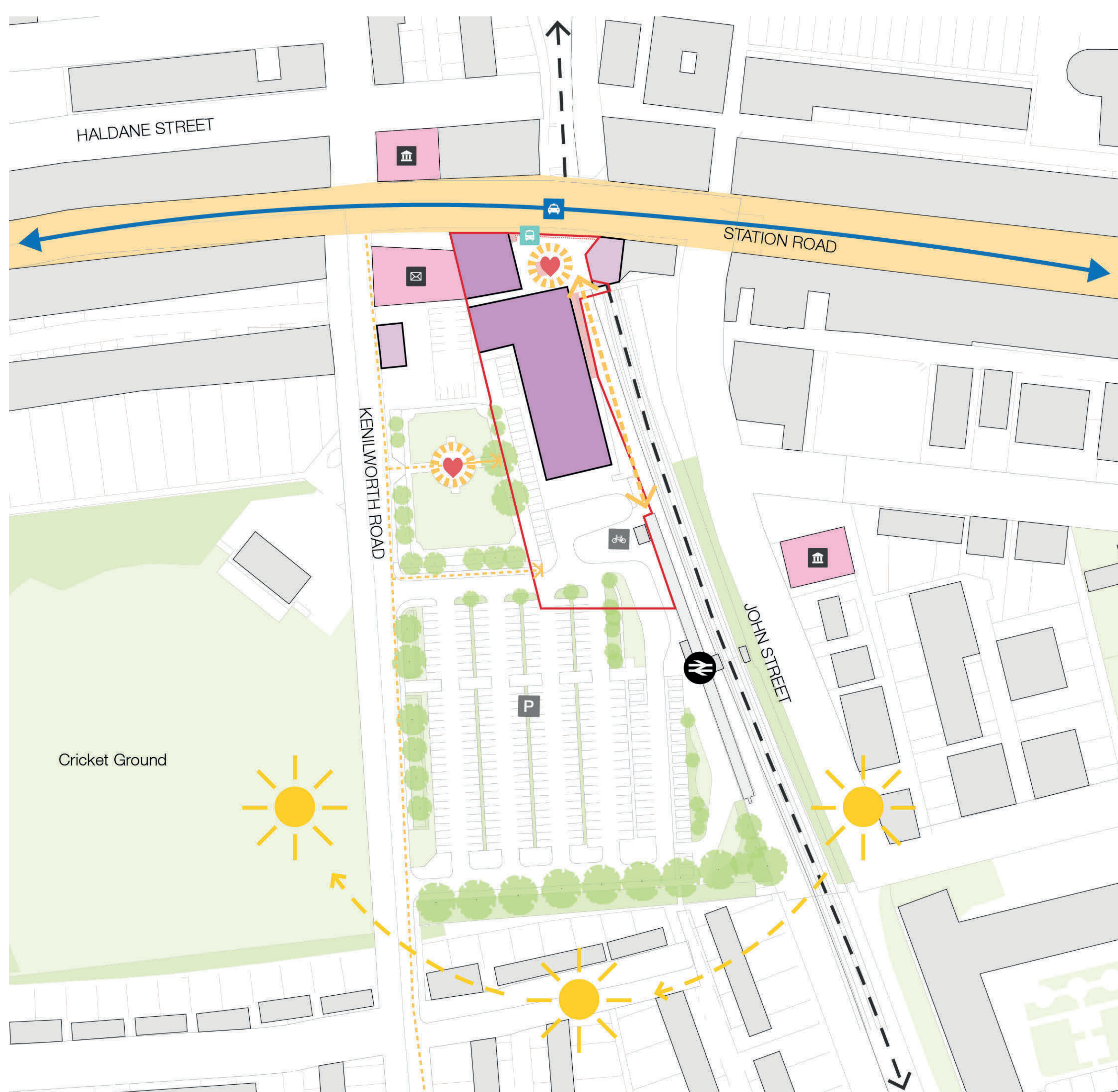


REDEVELOPMENT OF WANSBECK SQUARE

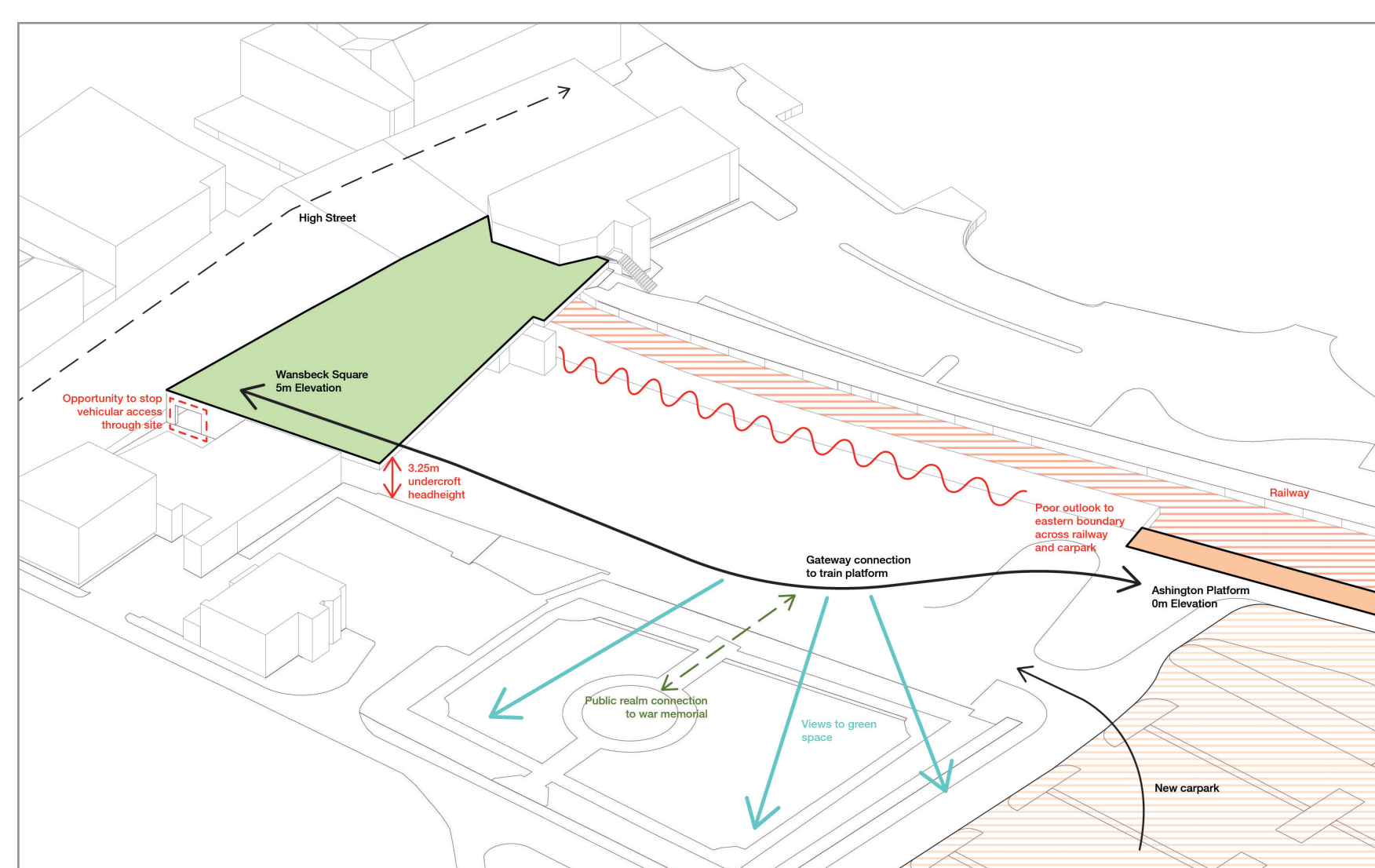
Background

The proposal includes demolition of a 1960s building at the west end of Station Road for a new and inspiring community and youth facility at Wansbeck Square. The new facility seeks to improve the town centre skyline, create high quality outdoor spaces for dwelling and small-scale public events, as well as become a welcoming gateway to the town. A key aspiration is to enthuse and nurture young people and adults in cultural and learning activities as well as offer events for the wider community to enjoy.

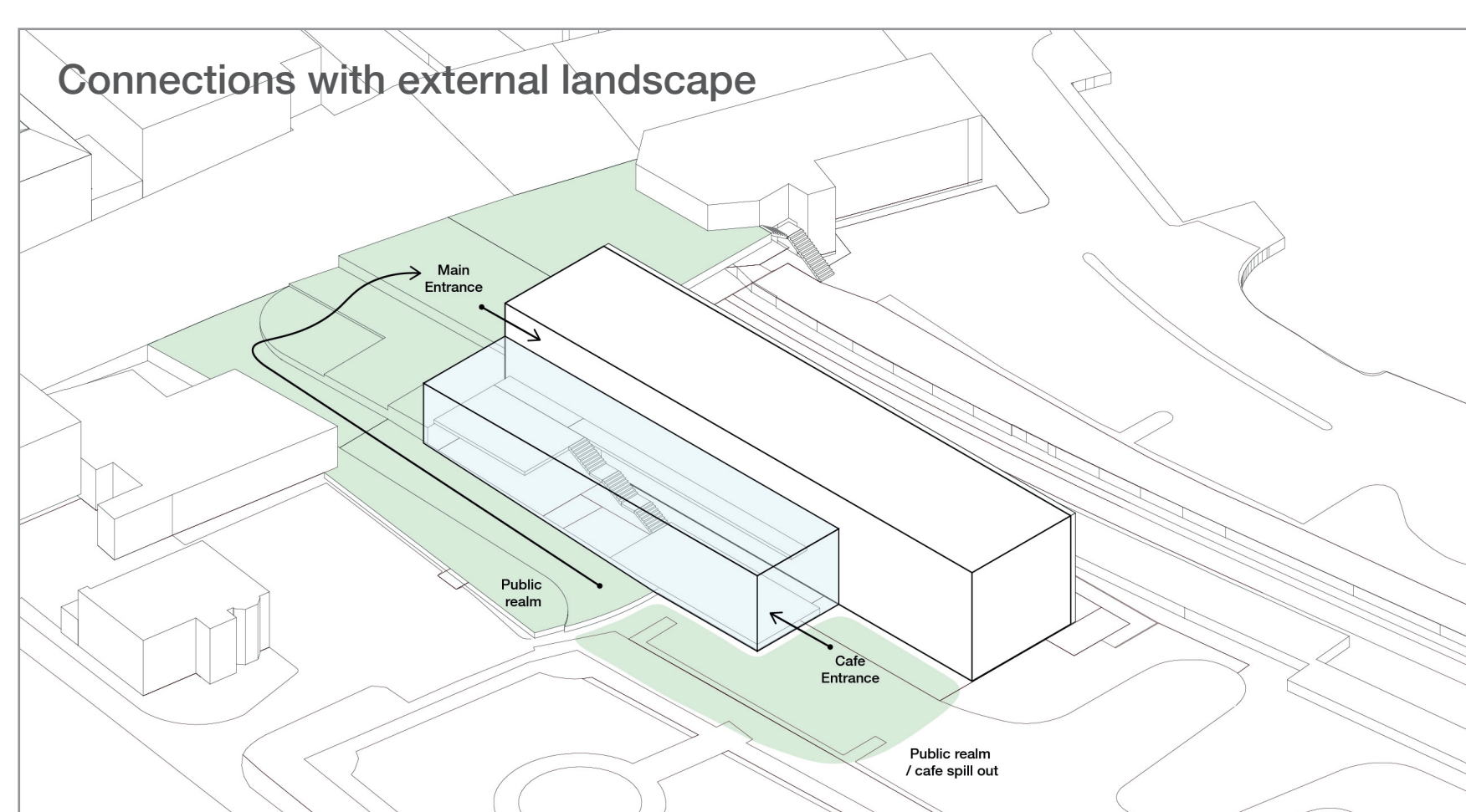
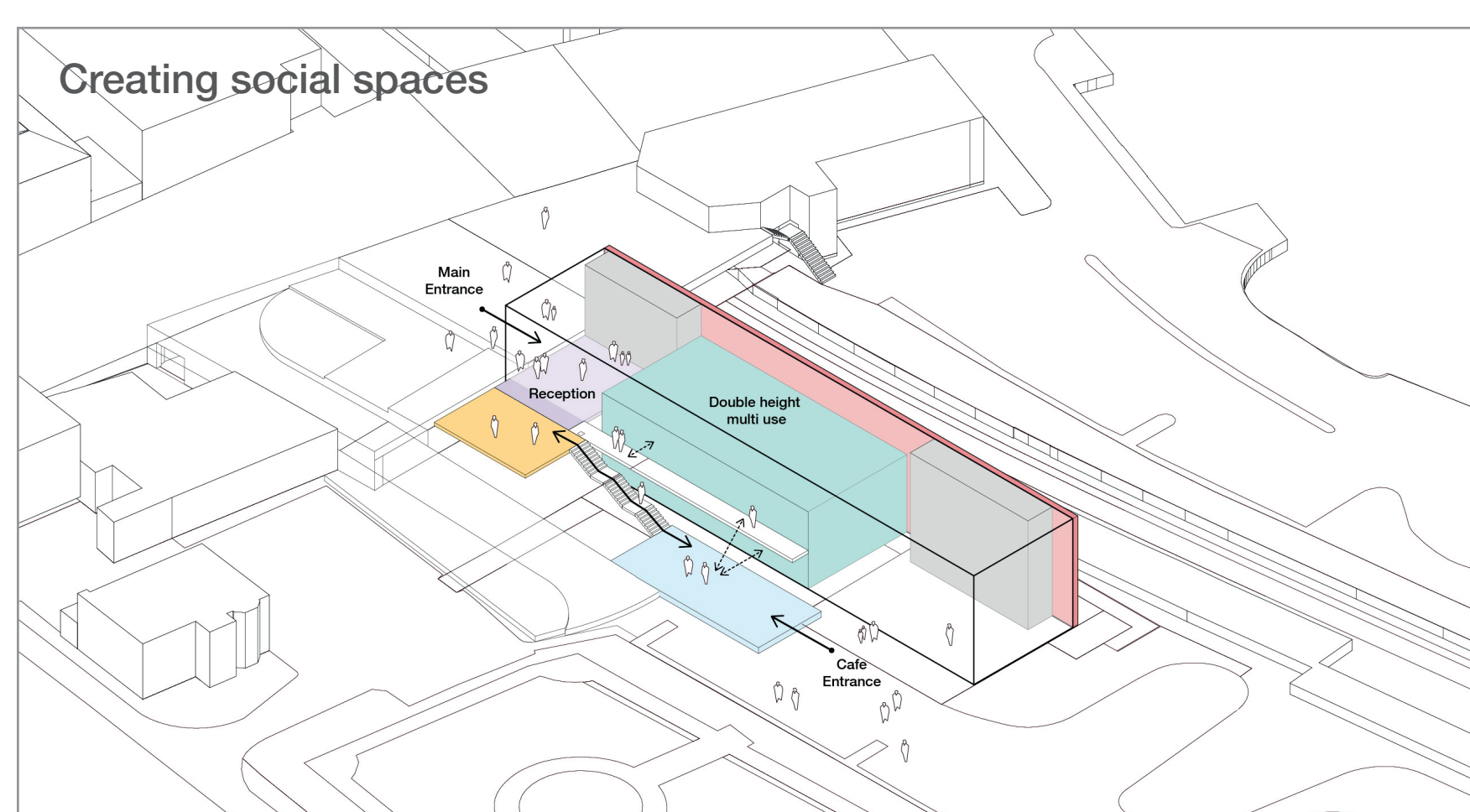
The proposal stems from ideas put forward by the community and stakeholders during the development of the Town Investment Plan, which highlighted the need for a new facility offering community services, youth activities and a new performance space in Ashington town centre. Earlier designs for the building were consulted on in Spring 2022 and feedback from residents has helped to shape the project's development.



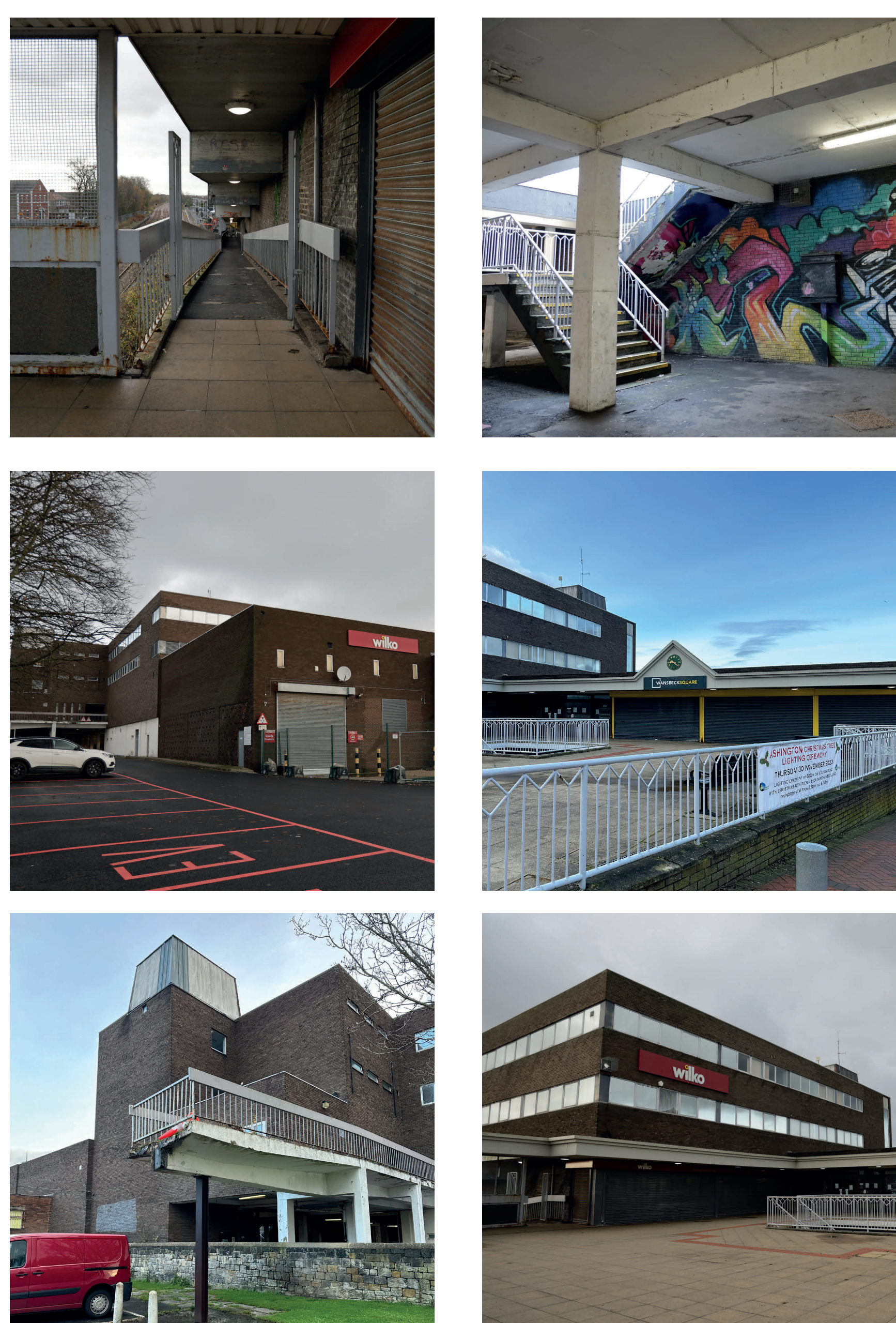
Location Plan & Site Opportunities



Building Opportunities Diagram



Building Concept Diagrams



Buildings to be demolished



Satellite aerial view of site