

PORTLAND PARK CINEMA AND RESTAURANTS

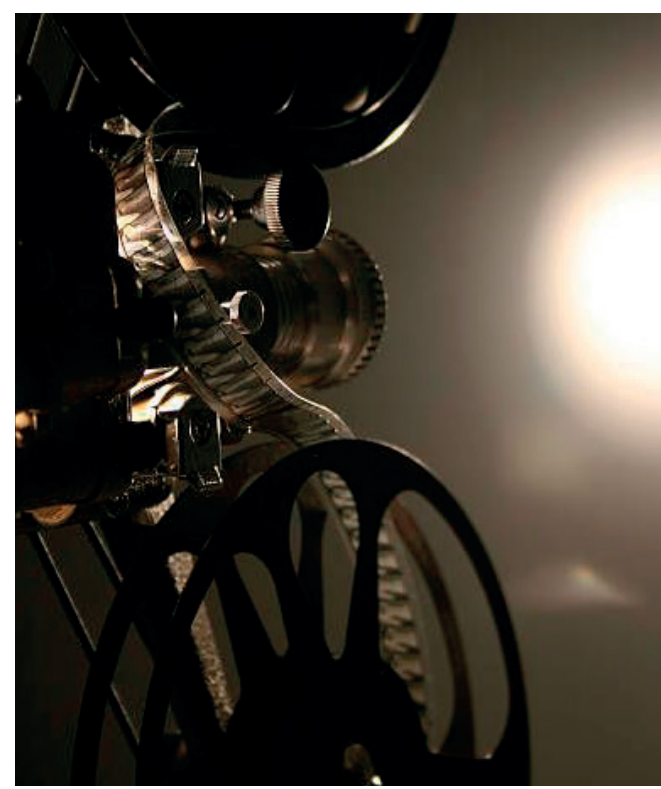
Elevation Concept

Moving Image

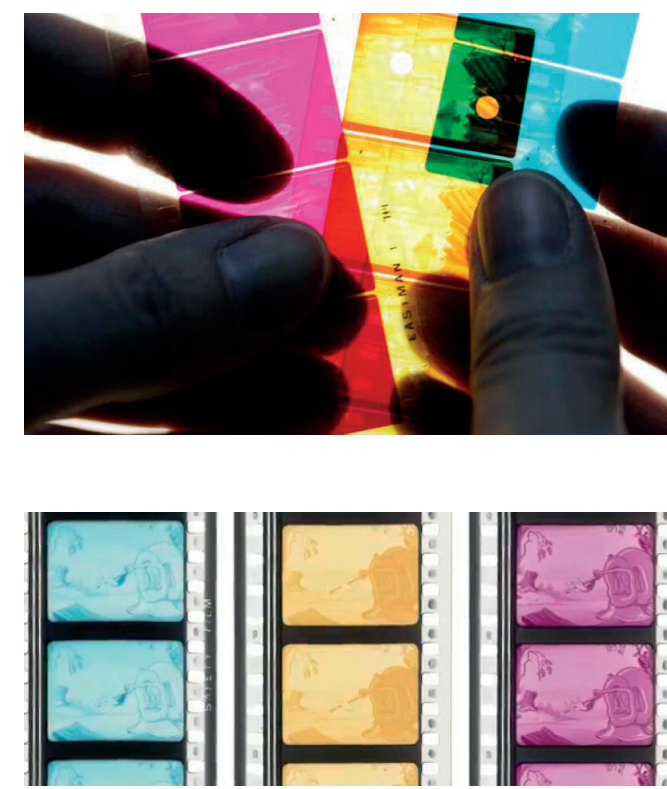


Looking at the history of cinema, we can see how film has been developed to include the full colour, sound and moving image event which we enjoy today.

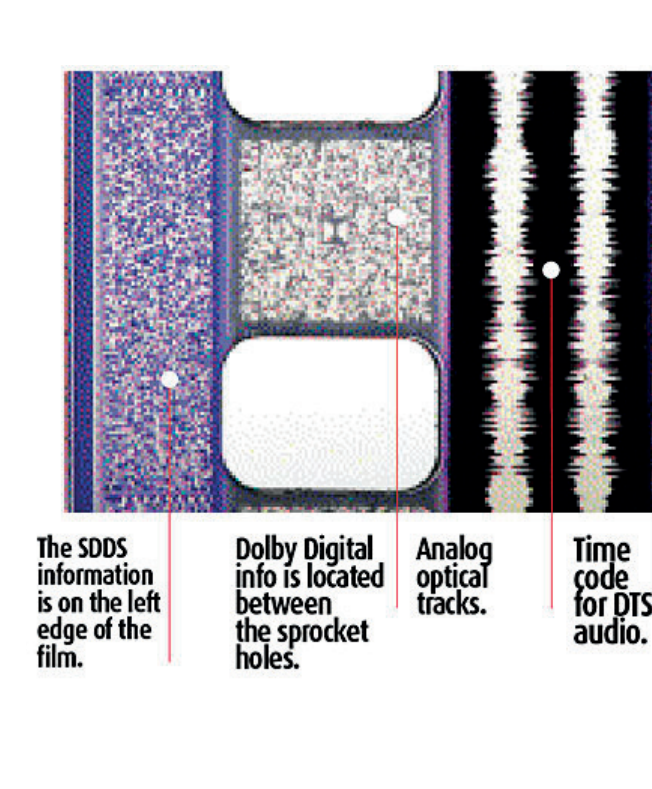
Film Reel



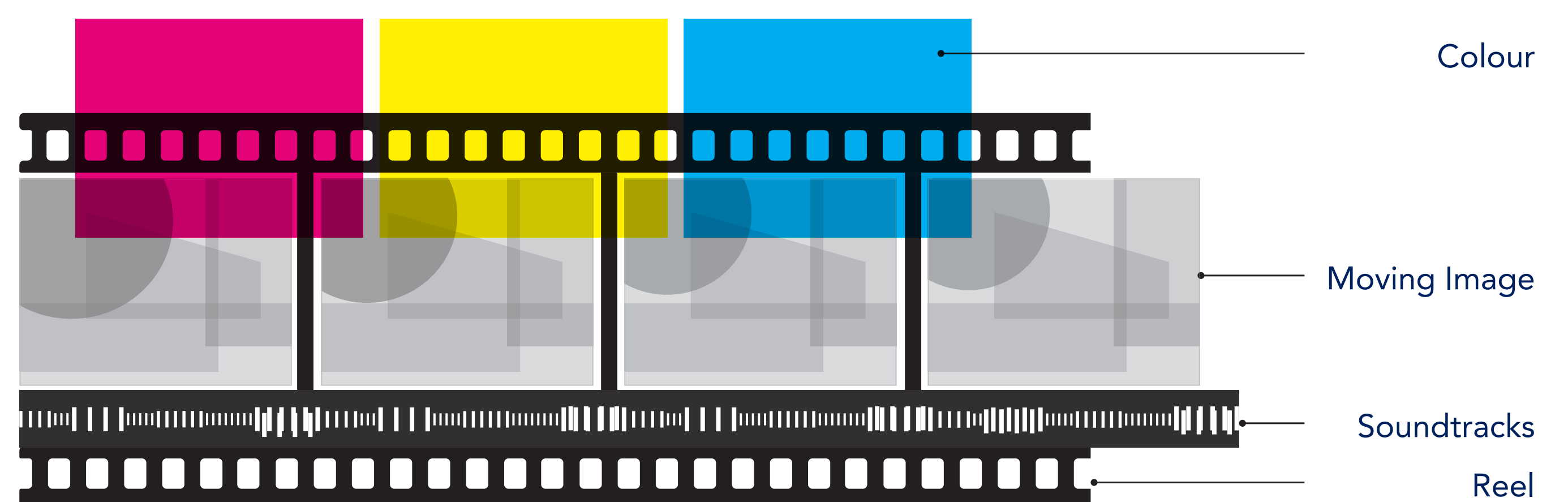
Technicolour



Soundtracks

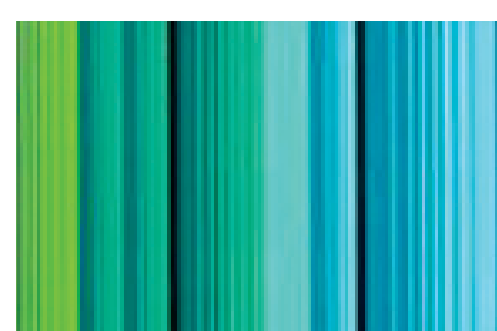


Printed film strips are comprised of a number of different components, to deliver a full-colour, full-sound, motion picture

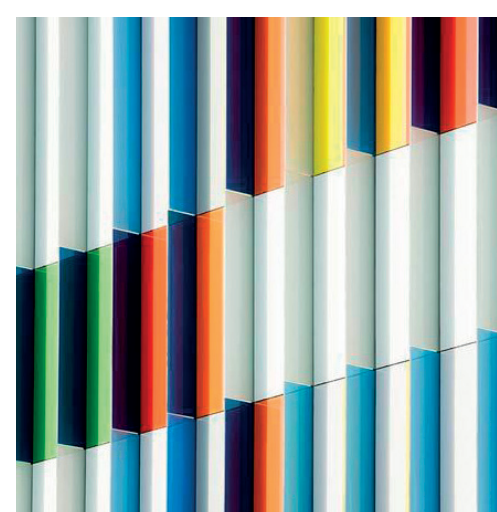


Indicative Materials

Colour Strip



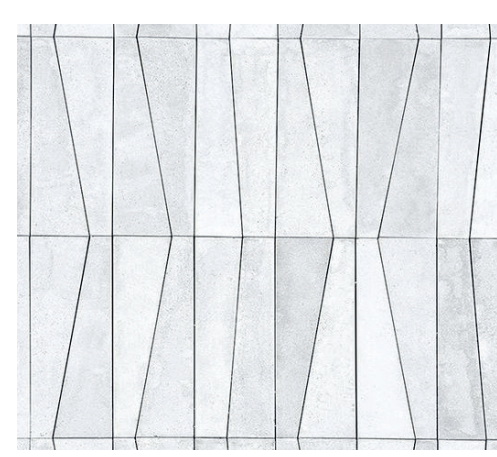
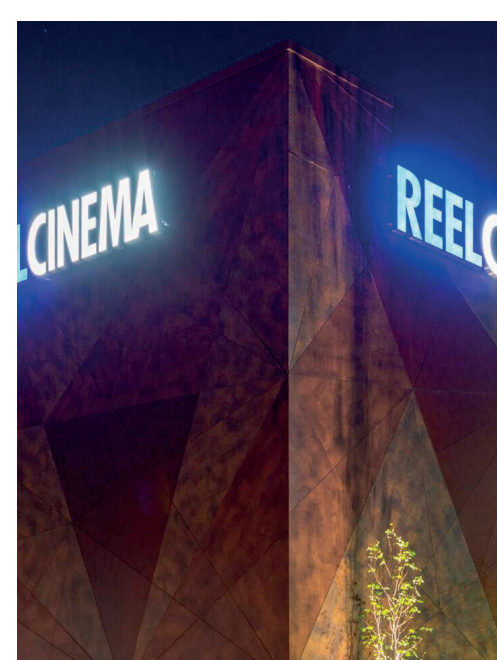
The 'technicolour' strip can be used to orientate to the surroundings, linking to features around the site. Colours can reference the town, woodland, country park and lake.



Moving Image (Mesh)

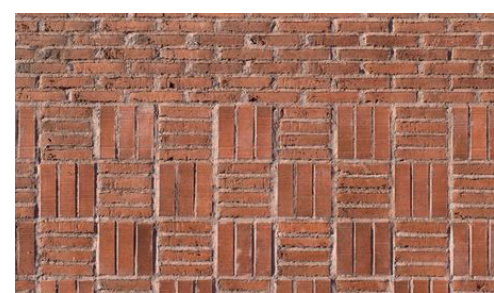
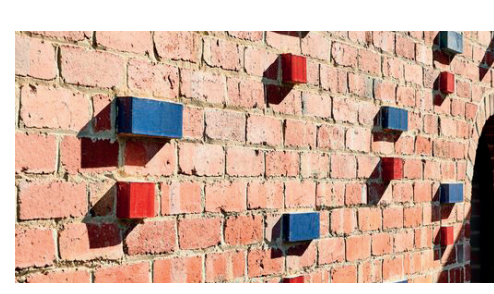


Moving Image (Solid)

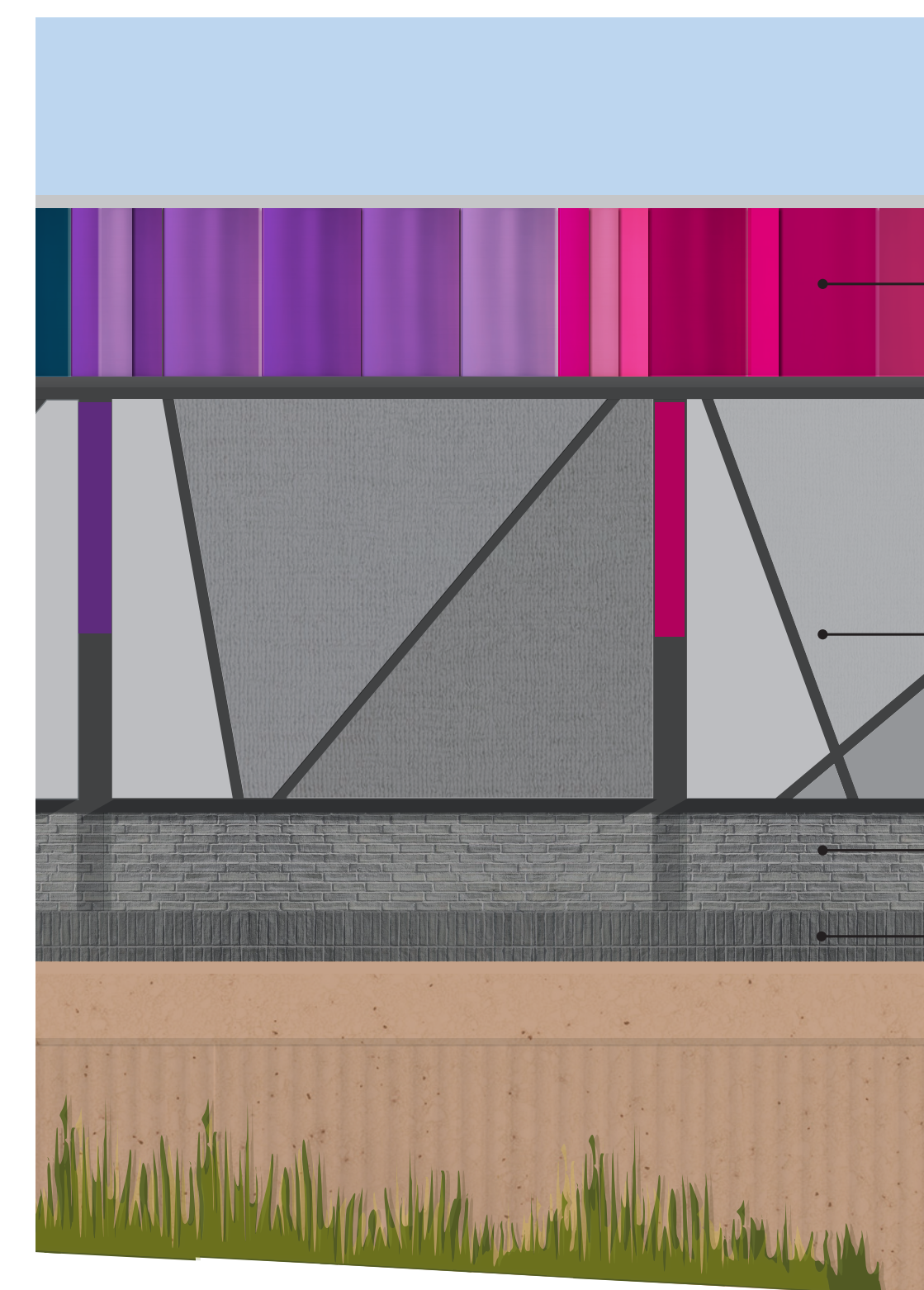
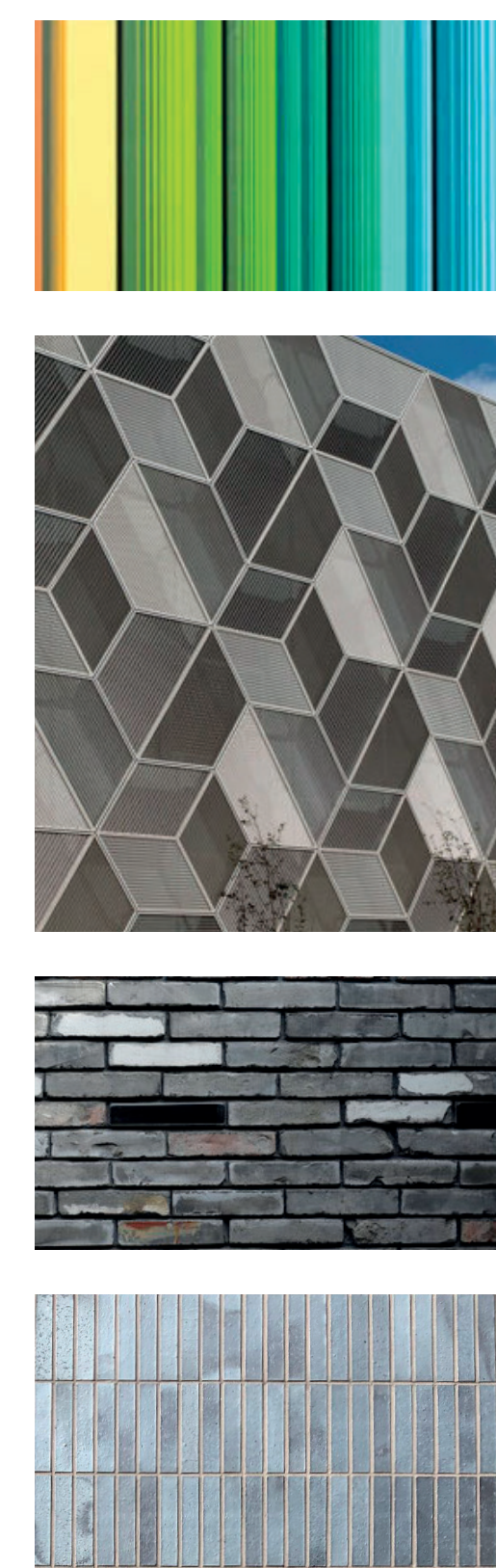
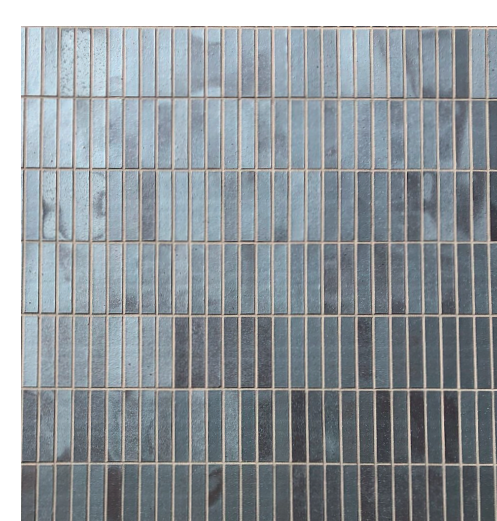
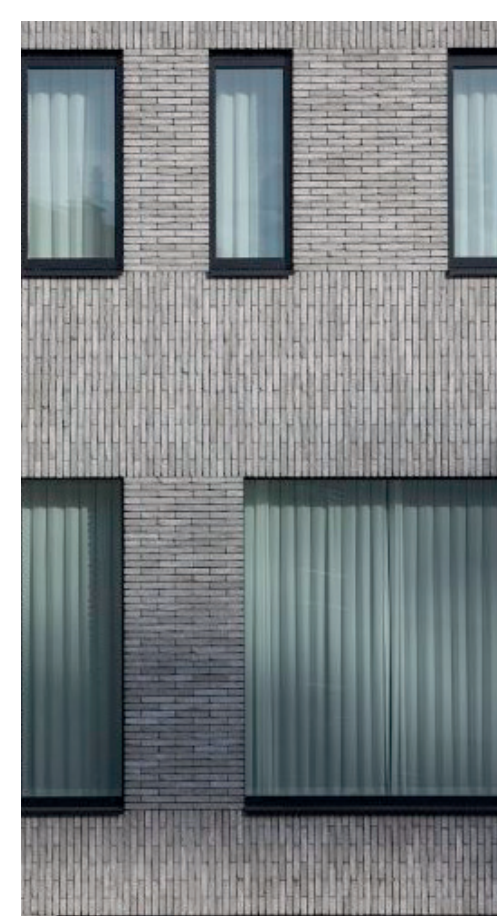


The patterned strip can be treated as a series of images, moving around the building.

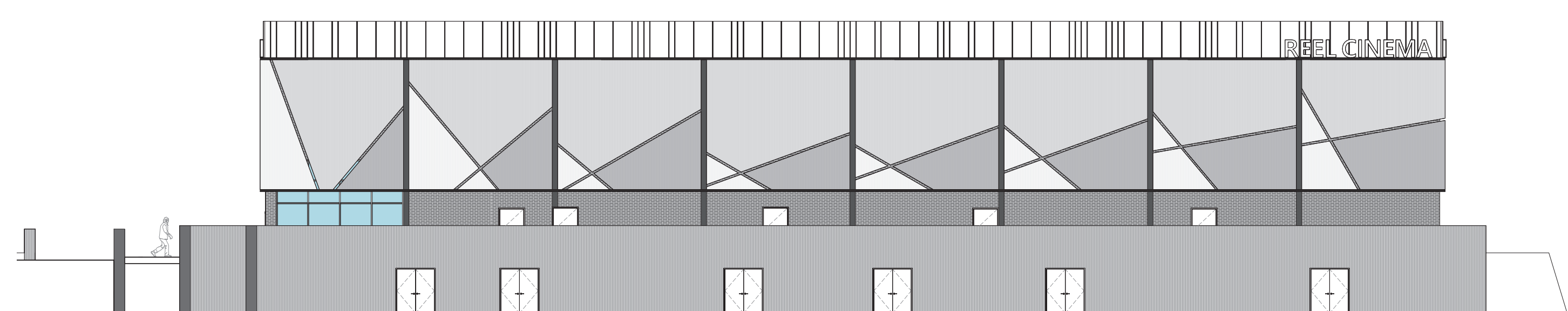
Soundtracks



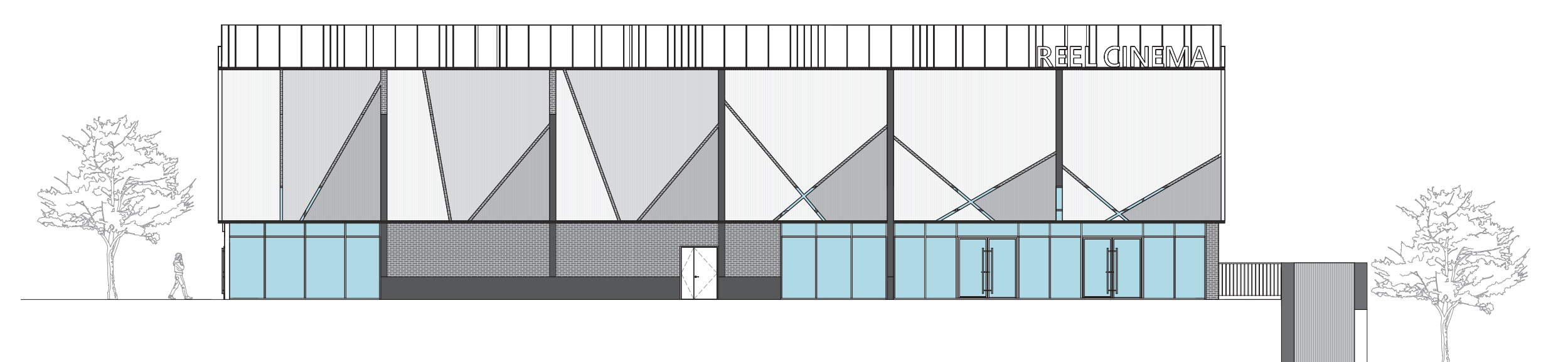
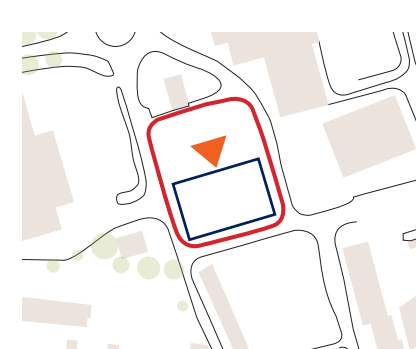
Film Reel



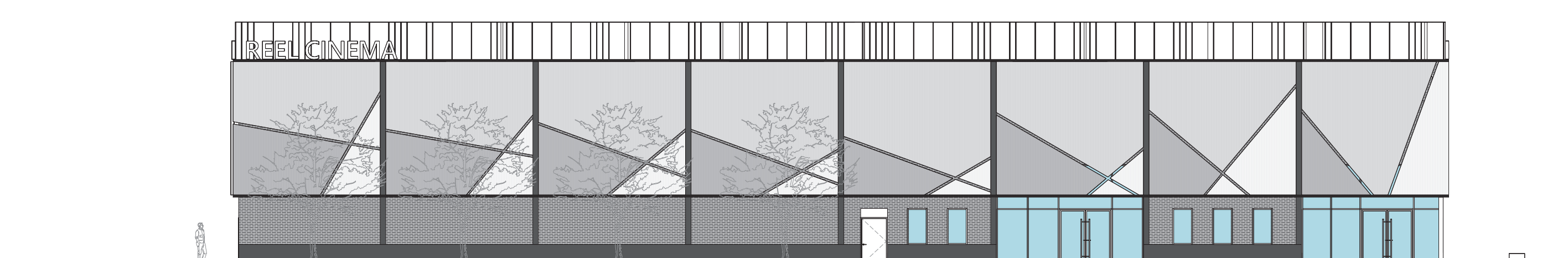
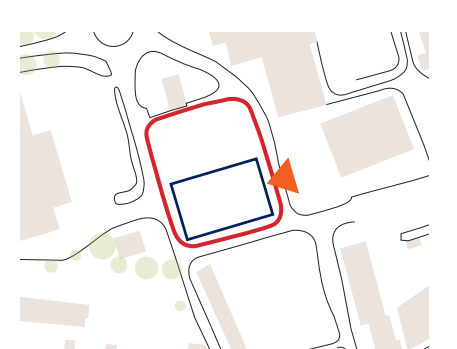
Proposed Elevations



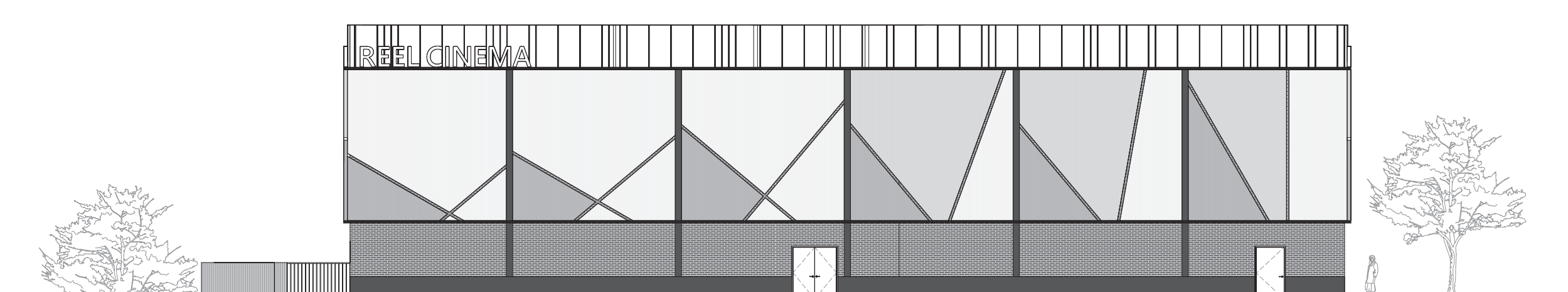
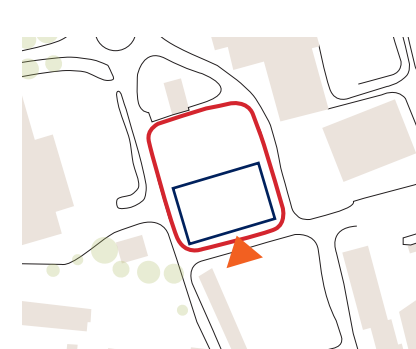
North Elevation



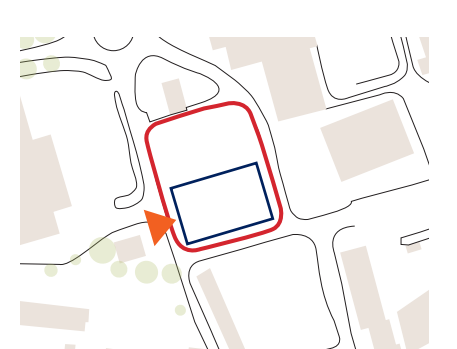
East Elevation



South Elevation



West Elevation



Indicative for Public Consultation Purposes