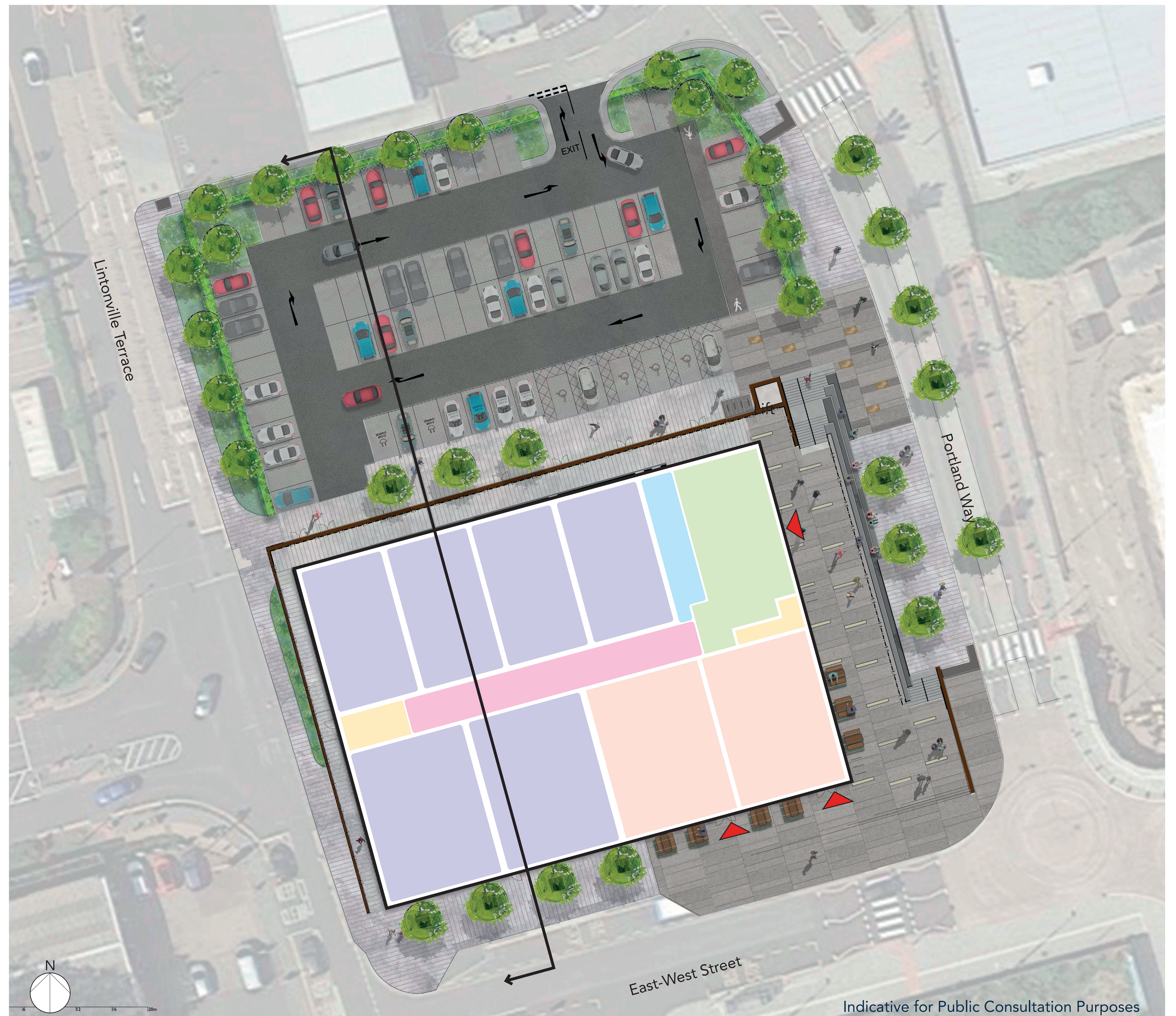
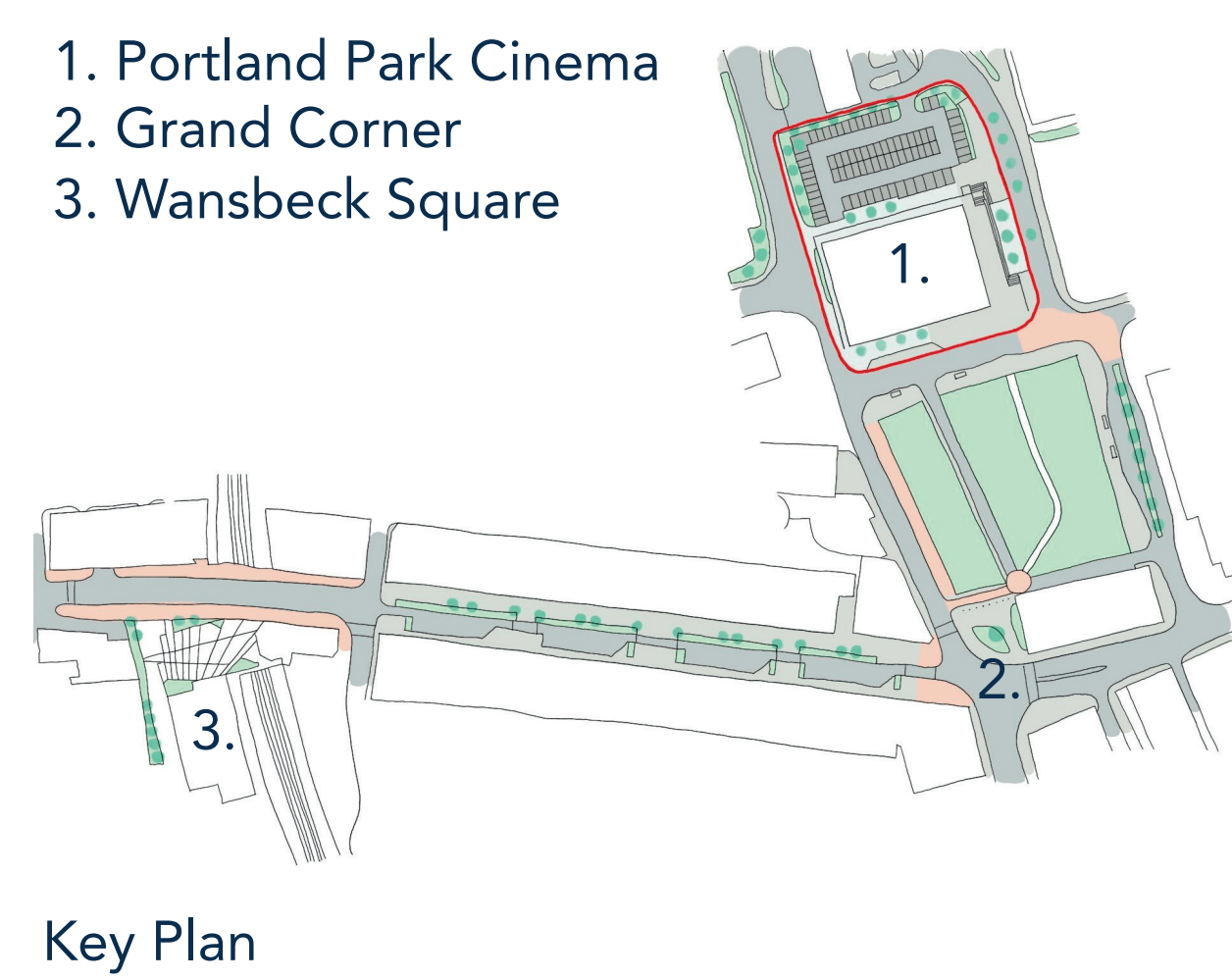


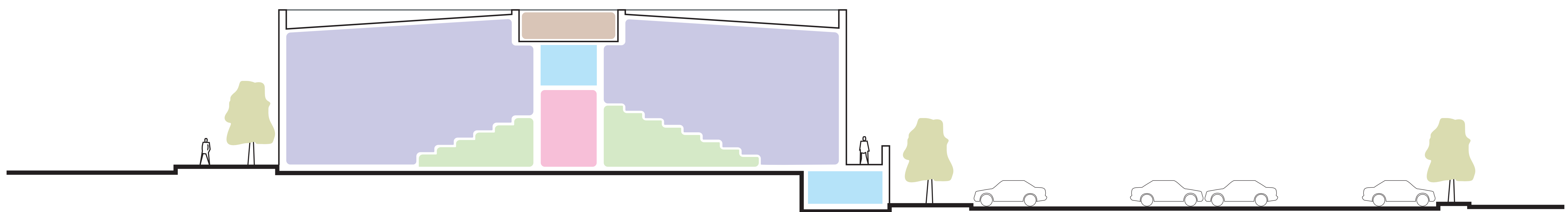
PORTLAND PARK CINEMA AND RESTAURANTS

Floor Plan

- Cinema Screens
6 no. Screens:
1 no. approx. 139 seats plus accessible.
1 no. approx. 141 seats plus accessible.
4 no. approx. 94 seats plus accessible.
- Foyer
Front of house counter
Ticket and circulation
- Restaurants/F&B
2 units
Access to external seating
- Back of House
- Concourse
Including changing places facility
- Circulation



Section



Section Through Screen 1 and Screen 4

Indicative for Public Consultation Purposes