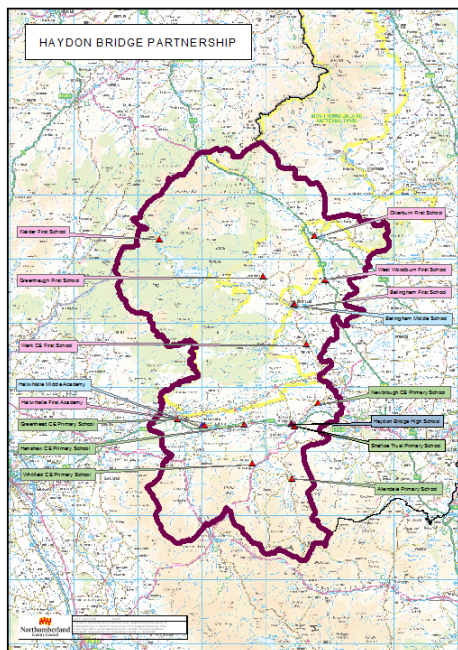




# Northumberland County Council

## HAYDON BRIDGE PARTNERSHIP NEWSLETTER Issue 1 – Spring Term 2019

### SCHOOL REORGANISATION IN HAYDON BRIDGE PARTNERSHIP



In July 2018, the Council's Cabinet approved proposals for the schools in the North Pennine and Redesdale areas to reorganise to the primary / secondary system. This included the closure of Bellingham Middle School. Bellingham Middle School Governing Body appealed this decision to the Office of the School Adjudicator who subsequently rejected the Council's decision to close the school. The Council's preferred pathway is that children will remain in their first school as this becomes primary for years 5 & 6, and then transfer to Haydon Bridge High School or another school of their choice. However, parents will now have the choice to send their child to Bellingham Middle School from Year 5.

### INVESTMENT IN HAYDON BRIDGE PARTNERSHIP AGREED BY CABINET

#### Bellingham Primary School (as it will be)

Funding has been approved for internal refurbishment to include relocation of the children's centre provision into the main building. This provides 0-11 provision in one building. As a result of the School Adjudicator's decision to retain Bellingham Middle school, the original model for capital investment will need to be revised.

#### Wark C of E Primary (as it will be)

£10k has been approved for minor internal refurbishment of Wark C E First School.

#### Otterburn Primary (as it will be)

£360k will be invested for a classroom extension to include cloakroom provision.

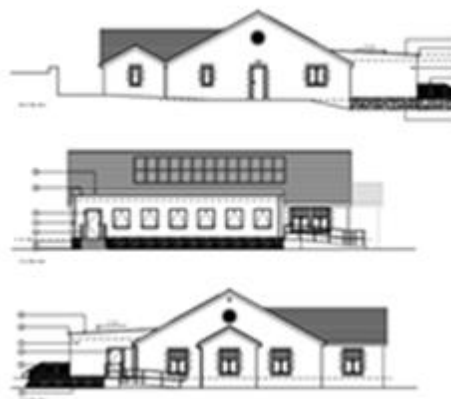
This scheme has been approved for planning by Northumberland County Council.



### Greenhaugh Primary (as it will be)

£366k has been approved for a classroom extension to include cloakroom provision.

This scheme has been approved for planning by the Northumberland National Park Authority.



### Haydon Bridge High

£3.1m has been approved to rationalise all teaching accommodation. There will be a refurbishment of the teaching blocks, together with roof and window replacements. A further £1.4m has been identified to support planned maintenance to give a total of £4.5m investment.



**An artist's impression of Entrance Façade Improvements**



**An artist's impression of the car park**

HBHS has one of the largest catchment areas in England (642.2 miles<sup>2</sup>) and has 359 students aged between 11 and 18. Through the investment, there will be less need for money to be spent on buildings maintenance, the school will be able to redirect savings from the refurbishment back in to the curriculum for the benefit of students.

Funding has been secured by Northumberland County Council to carry out improvements to parts of the school. These improvements include a new allocated walking route for students to the edge of the car park (in the boulevard area), which with the new layout of the one way system in the car park will increase student safety and will make the car park easier to navigate for drivers. There will also be allocated mini bus drop off points in the new car park as well as maintaining the current coach park.

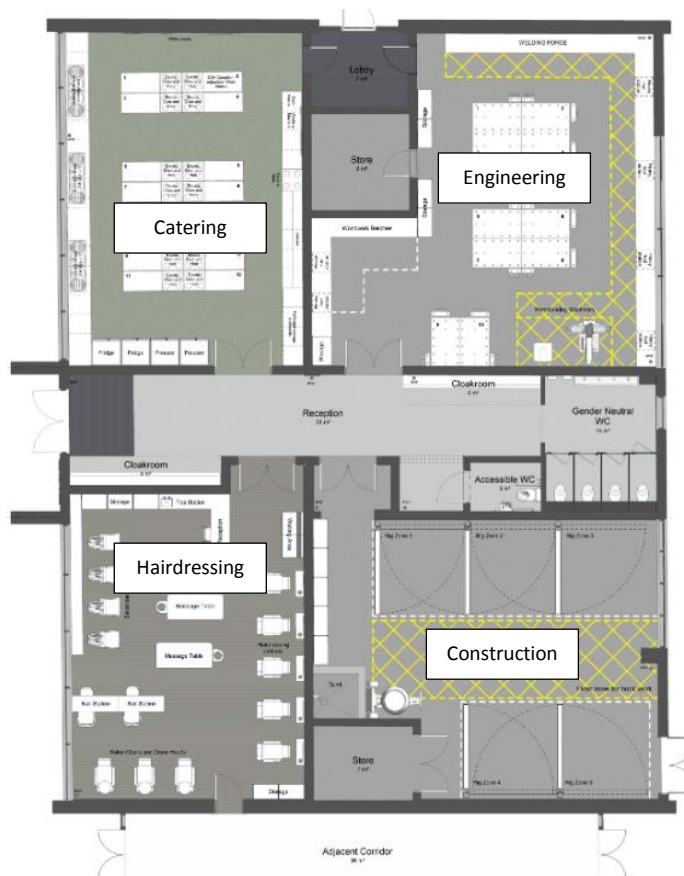
To the north side of the redesigned car park will be new Multi Use Game Areas (MUGAs), which will enable students to participate in sports activities all year round.

As shown above, there will be a new entrance façade. This will be the refurbishment to the front of the school building to provide a welcoming atmosphere for visitors, whilst staff offices in the entrance to the school will be remodelled to enhance the safeguarding of students. Visitors will be able to access the reception area and facilities but will not gain access to the remainder of the school without being accompanied by a member of staff. This will therefore provide safe working for staff and enable students to learn in a safe environment.

Throughout this design process, a number of work areas have been identified and these include the following:

- Designated car parking area to the front of the school
- MUGA's located at the front of the school
- Entrance Façade Improvements
- Main entrance / Reception remodelling
- Remodelling of Design and Technology block to form new Vocational Centre to provide teaching space for Construction, Engineering, Hairdressing and Catering
- Re-roofing of main entrance block
- Replacement of all single glazed windows with new double glazed units
- Remodelling of various areas including Staff Offices, 6th Form and Library
- Redecoration of other school areas

The Vocational Centre will be designed to enable community use when students from the school are not using the area. At this time, the design will still retain the security of the students in the main area of the school.



An artist's impression of the Vocational Centre

## West Woodburn First School update



The headteacher of Otterburn First School has been overseeing West Woodburn First School and the Governing Bodies of both schools have been in discussions on federating. Consultation on this proposal closed on 4 March 2019. The Governing Bodies of Otterburn First School and West Woodburn First School are very excited to announce that from 1st April 2019 the two schools will form a hard federation. The Governors of both schools believe that the learning experience and achievement of children at the schools will be improved through formal collaboration.

Hard federation will mean that there will be a shared Headteacher and a single governing body responsible for the governance of all schools in the Federation. A single governing body allows for efficient, streamlined decision-making in all areas.

Schools within hard Federations continue to be individual establishments but share resources such as teachers and office staff. Whilst each school receives and must account for its own separate budget, there is considerable scope, through the single governing body, to use the pooled budgets across the schools in the Federation. This should help the financial viability of schools. Officers will be working with the Headteacher to identify the most suitable form of organisation for West Woodburn after federation. Mrs Tina Henderson will now formally take on the leadership of both schools

## CALL FOR POTENTIAL GOVERNORS

Would you like to join a Governing Body and be an active member of the school? We are looking for individuals with an interest in education who can give some time to a school to support and challenge the leadership team to provide a financially and educationally sound school. Full training for new governors is provided, including a mentoring scheme.

If interested, please contact Sandra Hunter to discuss further,  
([Sandra.Hunter@northumberland.gov.uk](mailto:Sandra.Hunter@northumberland.gov.uk))

**The School  
Governors'  
Yearbook 2019**







## Transport

Policy. Therefore, where parents of current Year 4 children in the above first schools applied for a Year 5 place at Bellingham Middle School by the extended deadline of 16 November 2018, transport will be provided for those children should they take up the Year 5 place in the middle school for September 2019, provided they meet the eligibility criteria relating to distance and safe walking route. This exception will be applicable to the current cohort of Year 4 children on roll in Kielder, Otterburn, Greenhaugh, Bellingham and Wark CE First Schools only in relation to an application for a place in Bellingham Middle School only and they will be eligible for such transport for the duration of their attendance at that school. For children transferring into Year 5 of Bellingham Middle School from September 2020 onwards (other than children transferring from West Woodburn First School), transport would only be granted where the middle school was closer to the home address than the catchment primary school.

For children currently in Year 4 at the above first schools who will remain at their current school into Year 5 and who currently receive transport to that school, transport will continue as arranged into Year 5 and Year 6, subject to there being no material change in circumstances that may affect eligibility e.g. change of address.

As **West Woodburn First School** will remain a first school, pupils in the current Year 4 will require a Year 5 place at middle school or another school according to parental preference from September 2019 in any event. Eligibility for transport to preferred schools for these pupils will be assessed in line with the Council's Home to School Transport Policy as usual.

The Council's Home to School Transport Policy provides transport to children to attend their catchment, nearest or nearest faith school where they meet the eligibility criteria relating to distance from school or safe walking route. The Council decided to reorganise schools in the mini-Bellingham Partnership in July 2018 for implementation from September 2019. From September 2019, **Kielder, Otterburn, Greenhaugh, Bellingham and Wark CE First Schools** will become primary schools and will be the catchment schools for children living within them up to Year 5, and from September 2020 they will be the catchment schools for children up to Year 6.

As a result of a referral made to the Schools Adjudicator objecting to the closure of Bellingham Middle School by the federated Governing Body following this decision, uncertainty arose for parents as to whether or not the school would close in August 2019, as proposed by the Council. To assist parents, the Council extended the date by when applications for places at Bellingham Middle School for September 2019 could be made by 2 weeks to 16 November 2018.

Having taken the difficulties for parents in making this decision into consideration and in the light of the Adjudicator's decision to reject the Council's proposal to close the middle school, the Council has decided to exercise its power to grant exceptions within the Home to School