



Northumberland
County Council



**Where
learning
works
for you**
#LiveAndLearnLocal

**Part-time
courses**



PART-TIME COURSES FOR ADULTS ACROSS NORTHUMBERLAND

ADULT LEARNING MINI GUIDE - JANUARY 2021





Welcome

Cath McEvoy-Carr, Executive Director of Adult Social Care and Children's Services.

Welcome to our term two guide, showcasing a wide range of learning opportunities from January 2021. Last year we saw thousands of learners come through our doors and we look forward to meeting many more of you from across the county in the new year.

We're in a different world now, which will mean there won't be as many face-to-face classes and you'll see a new blended learning approach using digital technologies to connect and inspire throughout your learning journey. New from January 2021, you'll see a range of online courses which are designed to enable your learning to continue remotely without any face-to-face contact.

Our ambition remains stronger than ever - we want every resident of Northumberland to have the opportunity to develop skills that can help them to retrain, find employment, advance their career or try out something new.

Our team has worked hard to create an exciting range of courses bringing you the flexibility of learning online, where possible.

We have also ensured, that when you do visit our campuses, measures are in place to make you feel completely safe.

We are proud to continue our focus on numerous vocational areas from health and social care to maths and English skills, as well as art classes and courses around mental health awareness.

All of our courses are designed to offer experience and enrichment to nurture and develop aspirations with a range of activities and accreditations.

Whether you run a small business and want to expand productivity, need to know how to navigate online forms or want to connect with family using your phone or tablet, we can help, so get in touch (**see contact details on the back cover**).

With a clear focus on your personal and professional growth, make Northumberland the place that works for you.

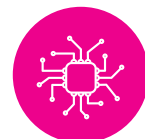
Cath McEvoy-Carr

#LiveAndLearnLocal

Live and learn local



Welcome to your refreshed and updated guide to learning across Northumberland from January 2021. We have a wide variety of course choices to help you advance your career, re-train, find employment or let you explore new skills. Our experienced team of lecturers are ready to support you to realise your potential.



YOUR SAFETY IS OUR PRIORITY

We are taking all the necessary precautions, including social distancing, and have put measures in place to ensure that you feel safe and secure in our learning environments. Every learner will receive further information about staying safe and the measures we have put in place at enrolment and as courses start.

We have 9 locations across the county, so you don't have to travel far to be inspired. We are offering more classes digitally this year, so you can also learn from the comfort of your own home (**see page 10-11 to view our new online courses**).

To help you navigate your learning options, see contents below.

Your learning journey starts on page 4

Your course choices from page 7

Your support network explained on page 26

Your success story unfolds from page 27



If you want to get in touch with a member of the team contact us at learn@northumberland.gov.uk or call your local campus. Full contact details on the back cover.



Our FUSE Campus in Prudhoe

Live and learn local

PARTICIPATING IN A COURSE LOCALLY HAS LOTS OF ADVANTAGES:

- We have 9 campuses across the county
- Lower transport costs and lots of parking at many of our campuses
- Free wireless WiFi networks in our classrooms and social areas
- Managed class sizes to ensure safe learning environments
- Support when you need it, either in person or online
- Curriculum experts to help you every step of the way
- A blend of hands-on learning and digital competencies to help you succeed
- 24/7 online access to a wide range of learning resources, including full access to the Northumberland Library Service offering:
- Pressreader: Over 600 free online magazines subjects from French language, to fashion, to horticulture
- Thousands of online audiobooks and e-books
- Access to the Northern Poetry Library: one of only 4 poetry libraries in England, where you can view first editions, rare book and signed copies
- Family genealogy: online resources including the libraries edition of Ancestry.com
- Online driving theory test

Your learning journey starts here

Studying with us means you'll gain more than just a qualification, you'll meet like-minded people, explore new skills and deepen existing learning to give you the confidence to succeed.

Starting at the right level for you is important. If you're uncertain and require more information, please contact us at learn@northumberland.gov.uk



ENTRY LEVEL

For learners who need extra support to progress to Level 1

LEVEL 1

GCSEs Grade 1-3 or vocational competency qualifications at Level 1

LEVEL 2

GCSEs Grade 4-9 or vocational competency qualifications at Level 2 and Apprenticeships at Level 2

LEVEL 3

A Levels or vocational competency qualifications at Level 3, as well as Apprenticeships at Level 3

LEVEL 4

Certificate of Higher Education (CertHE), Higher Apprenticeships or Higher National Certificate (HNC)

What will you discover?



Whether you want to try something new on one of our 'getting started' courses, or add to your professional development with an accredited qualification, our aim is to support you to reach your goals.

CONFIDENT AND READY

Boosting your skills and confidence is our priority – by the time you complete your qualification with us, we want you to feel confident to take the next step. No matter which subject you choose, we'll ensure that you feel inspired.

SKILLS FOR WORK

We will support you to achieve nationally recognised qualifications and ensure that you build essential skills to improve your current career, take a step into a new sector or set up your own business.

EMPLOYER CONNECTIONS

Our business networks and strong employer partnerships offer you a competitive edge. We have a range of employers endorsing our courses, so that you can feel assured that your qualifications are industry relevant.

BLENDED LEARNING

Your safety is key, so this academic year there is a mixture of classroom-based learning and practical skills, digital mentoring and e-learning, plus independent study and work placements. Where face-to-face learning applies social distancing and up-to-date government advice will be adhered to.

MAKING YOUR STUDIES AFFORDABLE

We constantly assess our courses to give you the best possible learning experience and there's a range of financial options available to support your study.

19+ LEARNER LOANS

Advanced Learner Loans are Government funded and provided to help learners with their fees. It's easy to apply, doesn't take your household income into account and doesn't involve a credit check. Repayments won't start until you are earning over £25,000 a year.

BURSARY FUNDS

This fund is used to support learners with travel expenses, childcare or additional learning support.

ARMED FORCES

If you have left the British Armed Forces within the last 10 years after completing four or more years of service, or have been medically discharged after completing basic training, you are entitled to full funding if you're studying your first full Level 2 or Level 3 qualification.

FLEXIBLE PAYMENTS

Lots of our courses are FREE and we have flexible payment plans in place if you can't pay all your fees upfront. These apply to all courses valued at £150 or more.

**If you have any questions about funding, finance or fees:
Contact Gemma Lee on 01670 622 105 or
email gemma.lee@northumberland.gov.uk**

Your course choices

We've developed a fresh approach to learning - one that blends face-to-face class work with digital mentoring to ensure your safety is paramount - all underpinned by ongoing support to keep you connected and inspired.

WE'RE LISTENING
 If there's a course you'd like to see listed, email us at learn@northumberland.gov.uk with the subject line 'course feedback'

BRINGING LEARNING TO YOU

If you're looking to approach learning in a new way, you've come to the right place.



THE TABLE BELOW SHOWS OUR RANGE OF CURRICULUM AREAS AND LOCATIONS WHERE CLASSES ARE OFFERED AT A GLANCE FOR JANUARY 2021:

COURSE TITLE	ONLINE	ALNWICK	ASHINGTON	BEDLINGTON	BERWICK	BLYTH	HAYDON BRIDGE	HEXHAM	MORPETH	PRUDHOE
Business & IT	✓	✓			✓	✓		✓	✓	✓
Catering		✓				✓	✓		✓	✓
Construction		✓					✓			✓
Creative and Wellbeing		✓		✓	✓			✓		✓
Education, Health and Social Care	✓	✓	✓		✓	✓		✓	✓	✓
Employability	✓	✓	✓		✓	✓		✓	✓	✓
English and maths	✓	✓	✓	✓	✓	✓		✓	✓	✓
Hairdressing and Barbering							✓			
Horticulture		✓						✓		
Languages	✓	✓		✓	✓	✓		✓	✓	✓

A fresh start

Whether you want to try something new, re-visit a past passion, or take your skills to the next level, we have a huge range of courses for you to explore.



Online courses

Study levels available:
Level 1 and Level 2

More on page 10



Business Studies and IT

Study levels available:
Entry Level, Level 1 and
Level 2

More on page 12



Catering

Study levels available:
Level 1 and Level 2

More on page 13



Construction

Study levels available:
Entry 3

More on page 14



Creative and Wellbeing

Study levels available:
Mixed ability, Level 1
and Level 2

More on page 15



Education, Health & Social Care

Study levels available:
Level 1 and Level 2
More on page 16



Employability

Study levels available:
Entry Level and Level 1
More on page 18



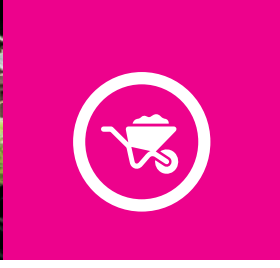
English, maths, ESOL & BSL

Study levels available:
Pre-Entry, Entry Level,
Level 1 and Level 2
More on page 20



Hairdressing and Barbering

Study levels available:
Level 1 and Level 2
More on page 22



Horticulture

Study levels available:
Level 1, Level 2, Level 3
More on page 22



Languages

Study levels available:
Entry Level, Level 1 and
Level 2
More on page 23

Online courses

In the current climate, we know how important flexibility is and so we have developed a range of online courses, which you can take part in remotely with no face-to-face contact needed at all.

Our range of online courses have been designed to boost confidence and skills from the comfort of your own home office or sofa. Ranging from team leading and mentoring to mental health awareness and creative writing; you can safely learn something new and expand your horizons from virtually anywhere.



SECTOR AREA	CAMPUS	QUALIFICATION TITLE	LEVEL	DAY	START DATE	END DATE	START TIME	END TIME	COST	CODE
Business Studies and IT	Online	Award in Office 1 Procedures - Step	Level 1	Tue	19/01/21	02/03/21	18:00	20:15	£52	ONL2032
Business Studies and IT	Online	Award in Office Procedures - Step 2	Level 2	Mon	18/01/21	01/03/21	18:00	20:15	FREE	ONL2033
Business Studies and IT	Online	Introduction to CAD Modeling for 3D printing	Level 1	Thu	21/01/21	21/07/21	18:00	21:00	£73	ONL2017
Business Studies and IT	Online	Introduction to PC Maintenance Basics	Level 1	Mon	12/04/21	26/04/21	17:30	21:00	£24	ONL2018
Business Studies and IT	Online	Award in Leadership and Team Skills	Level 2	Thu	15/04/21	20/05/21	18:30	21:00	FREE	ONL2031
Education, Health & Social Care	Online	Certificate in Introduction to Health, Social Care and Children's and Young People Settings	Level 1	Mon	18/01/21	04/07/21	18:00	21:00	£210	ONL2006
Education, Health & Social Care	Online	Introduction to Children's Health and Nutrition	Level 1	Mon	18/01/21	08/03/21	18:00	21:00	£73	ONL2014
Education, Health & Social Care	Online	Award in Understanding Safeguarding in Education and Childcare Settings	Level 1	Mon	18/01/21	05/07/21	18:00	21:00	£189	ONL2027
Education, Health & Social Care	Online	Certificate in the Principles of Dementia Care	Level 2	Mon	18/01/21	04/07/21	18:00	21:00	FREE	ONL2008
Education, Health & Social Care	Online	Certificate in Awareness of Mental Health Problems	Level 2	Mon	18/01/21	05/07/21	9:30	15:00	FREE	ONL2003
Education, Health & Social Care	Online	Certificate in Mental Health Awareness	Level 2	Mon	18/01/21	04/07/21	18:00	21:00	FREE	ONL2007
Education, Health & Social Care	Online	Certificate in Understanding Nutrition & Health	Level 2	Mon	18/01/21	05/07/21	18:00	21:00	FREE	ONL2010
Education, Health & Social Care	Online	Certificate in Understanding Nutrition & Health	Level 2	Mon	18/01/21	05/07/21	9:30	12:30	FREE	ONL2011



SECTOR AREA	CAMPUS	QUALIFICATION TITLE	LEVEL	DAY	START DATE	END DATE	START TIME	END TIME	COST	CODE
Education, Health & Social Care	Online	Award in Developing Personal Confidence and Self Awareness	Level 1	Tue	19/01/21	05/05/21	18:00	20:00	£84	ONL2030
Education, Health & Social Care	Online	Award in Information, Advice and Guidance	Level 2	Tue	19/01/21	27/04/21	18:00	21:00	FREE	ONL2001
Education, Health & Social Care	Online	Award in Mentoring	Level 2	Tue	19/01/21	27/04/21	18:00	21:00	FREE	ONL2002
Education, Health & Social Care	Online	Introduction to Counselling	Level 1	Wed	20/01/21	10/03/21	18:00	21:00	£73	ONL2015
Education, Health & Social Care	Online	Certificate in Counselling Skills	Level 2	Wed	20/01/21	26/05/21	18:00	21:00	FREE	ONL2004
Education, Health & Social Care	Online	Introduction to Childcare (Safeguarding in a Learning Environment + Award In Health and Safety Awareness)	Level 1	Wed	20/01/21	27/01/21	18:00	21:00	£42	ONL2028
Education, Health & Social Care	Online	Certificate in Information Advice and Guidance	Level 2	Wed	20/01/21	07/07/21	18:00	21:00	FREE	ONL2005
Education, Health & Social Care	Online	Certificate in Understanding Children & Young People's Mental Health	Level 2	Wed	20/01/21	31/07/21	18:00	21:00	FREE	ONL2009
Education, Health & Social Care	Online	Health and Nutrition in Early Years	Level 2	Thu	21/01/21	25/03/21	18:00	21:00	FREE	ONL2013
Education, Health & Social Care	Online	Preparing to Work in a School	Level 1	Wed	24/02/21	14/07/21	18:00	21:00	£126	ONL2029
Education, Health & Social Care	Online	Introduction to Mental Health Awareness	Level 1	Mon	08/03/21	17/05/21	18:00	21:00	£73	ONL2016
Education, Health & Social Care	Online	Dementia Awareness	Level 1	Tue	09/03/21	27/04/21	18:00	21:00	£73	ONL2012
Education, Health & Social Care	Online	Award in Safeguarding in a Learning Environment	Level 1	Mon	12/04/21	12/05/21	18:00	21:00	£31	ONL2026
English, maths, ESOL & BSL	Online	Creative Writing - Developing Themes	Level 1	Mon	18/01/21	01/03/21	18:00	20:15	£40	ONL2025
English, maths, ESOL & BSL	Online	Creative Writing	Level 1	Mon	18/01/21	19/04/21	18:00	20:00	£75	ONL2021
English, maths, ESOL & BSL	Online	Creative Writing - Developing Characters	Level 1	Mon	22/02/21	22/03/21	18:00	20:15	£40	ONL2023
English, maths, ESOL & BSL	Online	Creative Writing - Crime and Adventure Stories	Level 1	Mon	12/04/21	24/05/21	18:00	20:15	£40	ONL2022
English, maths, ESOL & BSL	Online	Creative Writing - Developing the Scene and Environment	Level 1	Mon	07/06/21	12/07/21	18:00	20:15	£40	ONL2024
Languages	Online	Beginners German (Step 1)	Level 1	Mon	18/01/21	26/04/21	18:00	20:00	£70	ONL2019
Languages	Online	Beginners Spanish (Step 1)	Level 1	Mon	25/01/21	10/05/21	18:00	20:00	£70	ONL2020



Business Studies & IT

Want to excel in business? Our business and IT courses can help you further your career and improve communication, management and leadership skills.

Our courses are ideal if you want to be self-employed and are looking for the skills and confidence to start your own business.

We offer a range of classes from 'getting started' through to diplomas. We'll help you reach your goals.



ALNWICK COURSES	LEVEL	DAY	START DATE	END DATE	START TIME	END TIME	FEE	CODE
Getting Started in Customer Service	Level 1	Mon	18/01/21	18/01/21	9:00	12:00	£25	ALN20108
Getting Started in Customer Service	Level 1	Tue	19/01/21	19/01/21	9:30	12:00	£25	ALN20109
Getting Started in Retail Service	Level 1	Tue	19/01/21	19/01/21	13:00	15:30	£25	ALN20110
Introduction to CAD Modeling for 3D printing	Level 1	Mon	08/03/21	08/05/21	9:30	12:30	£73	ALN20106
Award in Awareness of Social Media and Online Safety	Level 1	Mon	12/04/21	30/04/21	13:00	16:30	£24	ALN20105

BERWICK COURSES	LEVEL	DAY	START DATE	END DATE	START TIME	END TIME	FEE	CODE
ECDL Certificate in IT User Skills	Level 1	Mon	18/01/21	26/04/21	9:30	12:30	£126	BER20047
ECDLExtra - Certificate in IT User Skills	Level 2	Mon	18/01/21	21/06/21	9:30	13:30	FREE	BER20048
Getting Started in Business Administration	Level 1	Tue	19/01/21	19/01/21	9:30	12:00	£25	BER20066

BLYTH COURSES	LEVEL	DAY	START DATE	END DATE	START TIME	END TIME	FEE	CODE
ECDL Certificate in IT User Skills	Level 1	Mon	18/01/21	26/04/21	9:30	12:30	£126	BLY20079
ECDLExtra - Certificate in IT User Skills	Level 2	Mon	18/01/21	21/06/21	9:30	13:30	FREE	BLY20080
Getting Started in Customer Service	Level 1	Mon	18/01/21	08/03/21	9:30	12:00	£25	BLY20082

HEXHAM COURSES	LEVEL	DAY	START DATE	END DATE	START TIME	END TIME	FEE	CODE
Getting Started in Business Administration	Level 1	Thu	21/01/21	11/03/21	9:30	12:00	£25	HEX20153
A beginners Guide to Online Survival	Level 1	Mon	22/02/21	01/03/21	9:00	12:30	£24	HEX20117

MORPETH COURSES	LEVEL	DAY	START DATE	END DATE	START TIME	END TIME	FEE	CODE
Getting Started in Retail Service	Level 1	Mon	18/01/21	08/03/21	13:00	15:30	£25	MOR20065
Award in Awareness of Social Media and Online Safety	Level 1	Mon	22/02/21	10/03/21	13:00	16:30	£24	MOR20063
A beginners Guide to Online Survival	Level 1	Mon	01/03/21	08/03/21	9:00	12:30	£24	MOR20062

PRUHOE COURSES	LEVEL	DAY	START DATE	END DATE	START TIME	END TIME	FEE	CODE
Certificate in Cambridge Technical in IT (2012)	Level 2	Mon	18/01/21	04/07/21	11:00	15:30	FREE	PRU20070
Ext Certificate in Cambridge Technical in IT (2012)	Level 2	Mon	18/01/21	04/07/21	11:00	15:30	FREE	SPITPRU01
ECDL Certificate in IT User Skills	Level 1	Tue	19/01/21	14/06/21	9:30	15:00	£126	PRU20071
Introduction to CAD Modeling for 3D printing	Level 1	Mon	17/05/21	17/07/21	9:30	12:30	£73	PRU20072

ONLINE COURSES	LEVEL	DAY	START DATE	END DATE	START TIME	END TIME	FEE	CODE
Award in Office Procedures - Step 2	Level 2	Mon	18/01/21	01/03/21	18:00	20:15	FREE	ONL2033
Award in Office Procedures - Step 1	Level 1	Tue	19/01/21	02/03/21	18:00	20:15	£52	ONL2032
Introduction to CAD Modeling for 3D printing	Level 1	Thu	21/01/21	21/07/21	18:00	21:00	£73	ONL2017
Introduction to PC Maintenance Basics	Level 1	Mon	12/04/21	26/04/21	17:30	21:00	£24	ONL2018
Award in Leadership and Team Skills	Level 2	Thu	15/04/21	20/05/21	18:30	21:00	FREE	ONL2031

LOCATION KEY: ■ Alnwick ■ Ashington ■ Bedlington ■ Berwick ■ Blyth ■ Haydon Bridge ■ Hexham ■ Morpeth ■ Prudhoe



Catering

Do you enjoy working as part of a team, do you have boundless energy and a passion for food? Then a job in catering could be for you. Exciting careers range from chef, concierge, front of house and kitchen porter/assistant, barista to bar person or catering assistant.

We offer a range of courses from patisserie to food safety giving you the skills to step straight into the workplace.

ALNWICK COURSES	LEVEL	DAY	START DATE	END DATE	START TIME	END TIME	FEE	CODE
Food Safety	Level 2	Fri	29/01/21	29/01/21	9:30	16:30	£50	ALN20107 ■
Award in the Principles of Nutrition in Food Production	Level 2	Tue	02/02/21	02/02/21	9:30	16:30	FREE	ALN20091 ■
BLYTH COURSES	LEVEL	DAY	START DATE	END DATE	START TIME	END TIME	FEE	CODE
Food Safety	Level 2	Fri	02/05/21	02/05/21	9:30	16:30	£50	BLY20081 ■
HAYDON BRIDGE COURSES	LEVEL	DAY	START DATE	END DATE	START TIME	END TIME	FEE	CODE
Vegetarian Cookery	Level 1	Mon	08/03/21	10/05/21	17:00	20:00	£50	HAY20040 ■
Gluten Free Cookery	Level 1	Tue	09/03/21	05/04/21	17:00	20:00	£50	HAY20034 ■
Mediterranean Cookery	Level 1	Tue	20/04/21	20/04/21	17:00	20:00	£50	HAY20037 ■
Pastry and Cakes	Level 1	Mon	17/05/21	17/5/2021	17:00	20:00	£50	HAY20038 ■
Mediterranean Cookery	Level 1	Tue	18/05/21	07/06/21	17:00	20:00	£50	HAY20036 ■
MORPETH COURSES	LEVEL	DAY	START DATE	END DATE	START TIME	END TIME	FEE	CODE
Food Safety	Level 2	Fri	03/05/21	03/05/21	9:30	16:30	£50	MOR20064 ■
PRUDHOE COURSES	LEVEL	DAY	START DATE	END DATE	START TIME	END TIME	FEE	CODE
Cake Decoration - Improvers	Level 2	Tue	13/04/21	13/07/21	17:30	20:30	£100	PRU20073 ■

LOCATION KEY: ■ Alnwick ■ Ashington ■ Bedlington ■ Berwick ■ Blyth ■ Haydon Bridge ■ Hexham ■ Morpeth ■ Prudhoe



Construction



Do you want to learn a trade, work in a team, get hands on? If you have energy and commitment then the construction industry could be for you.

Our courses cover numerous skilled trades:

- Construction operations and supervision
- Joinery skills
- Bricklaying
- Painting and decorating
- Fenestration
- General maintenance and refurbishment

ALNWICK COURSES	LEVEL	DAY	START DATE	END DATE	START TIME	END TIME	FEE	CODE
Award in Construction Skills (inc CSCS card)	Entry 3	Mon	18/01/21	25/01/21	9:00	16:00	£150	ALN20104 ■
ASHINGTON COURSES	LEVEL	DAY	START DATE	END DATE	START TIME	END TIME	FEE	CODE
Award in Construction Skills (inc CSCS card)	Entry 3	Mon	15/02/21	22/02/21	9:00	16:00	£150	WW020056 ■
BERWICK COURSES	LEVEL	DAY	START DATE	END DATE	START TIME	END TIME	FEE	CODE
Award in Construction Skills (inc CSCS card)	Entry 3	Mon	01/02/21	08/02/21	9:00	16:00	£150	BER20062 ■
HAYDON BRIDGE COURSES	LEVEL	DAY	START DATE	END DATE	START TIME	END TIME	FEE	CODE
Award in Construction Skills (inc CSCS card)	Entry 3	Mon	18/01/21	25/01/21	9:00	16:00	£150	HAY20031 ■
PRUDHOE COURSES	LEVEL	DAY	START DATE	END DATE	START TIME	END TIME	FEE	CODE
Award in Construction Skills (inc CSCS card)	Entry 3	Mon	01/03/21	08/03/21	9:00	16:00	£150	PRU20069 ■

LOCATION KEY: ■ Alnwick ■ Ashington ■ Bedlington ■ Berwick ■ Blyth ■ Haydon Bridge ■ Hexham ■ Morpeth ■ Prudhoe



Creative and Wellbeing

Take time for yourself to unleash your creativity, explore new skills and be inspired.

The creative industries in Northumberland and the North East region are thriving, so whether you're thinking of starting a business or looking for an additional income stream, look no further than our range of creative courses.

ALNWICK COURSES	LEVEL	DAY	START DATE	END DATE	START TIME	END TIME	FEE	CODE	
Art - Drawing and Painting for Pleasure	Level 1	Tue	19/01/21	05/07/21	9:30	12:30	£80	ALN20111	■
Dressmaking for Fun	Level 1	Thu	21/01/21	10/06/21	10:00	12:30	£85	ALN20113	■
Patchwork & Quilting	Level 1	Thu	21/01/21	10/06/21	13:30	16:00	£85	ALN20114	■
Dressmaking Day	Level 1	Fri	26/01/21	26/01/21	9:30	16:00	£45	ALN20112	■
BEDLINGTON COURSES	LEVEL	DAY	START DATE	END DATE	START TIME	END TIME	FEE	CODE	
Art - Drawing and Painting for Pleasure	Level 1	Wed	20/01/21	06/07/21	9:30	12:30	£80	BED20035	■
Pottery for Beginners	Entry Level	Thu	21/01/21	03/04/21	17:30	20:30	£50	BED20037	■
BERWICK COURSES	LEVEL	DAY	START DATE	END DATE	START TIME	END TIME	FEE	CODE	
Dressmaking for Fun	Level 2	Wed	20/01/21	09/06/21	10:00	12:30	£85	BER20054	■
Dressmaking for Fun	Level 2	Wed	20/01/21	09/06/21	13:30	16:00	£85	BER20055	■
Bookbinding Workshop Day	Level 2	Fri	22/01/21	22/01/21	9:30	16:00	£55	BER20051	■
Bookbinding & Repair	Level 2	Fri	22/01/21	19/03/21	9:30	12:30	£85	BER20049	■
Book Binding & Repair	Level 2	Fri	22/01/21	19/03/21	13:00	16:00	£85	BER20050	■
Bookbinding Workshop Day	Level 2	Fri	19/02/21	19/02/21	9:30	16:00	£55	BER20052	■
Bookbinding Workshop Day	Level 2	Fri	19/03/21	19/03/21	9:30	16:00	£55	BER20053	■
HEXHAM COURSES	LEVEL	DAY	START DATE	END DATE	START TIME	END TIME	FEE	CODE	
Art - Painting and Drawing for Pleasure	Level 1	Tue	19/01/21	22/06/21	9:30	12:30	£80	HEX20118	■
Art - Painting and Drawing for Pleasure	Level 1	Wed	20/01/21	09/06/21	12:30	15:00	£85	HEX20119	■
Art - Painting and Drawing for Pleasure	Level 1	Wed	20/01/21	09/06/21	16:00	18:30	£85	HEX20120	■
Art - Painting and Drawing for Pleasure	Level 1	Thu	21/01/21	10/06/21	13:00	15:30	£85	HEX20121	■
Art - Painting and Drawing for Pleasure	Level 1	Fri	22/01/21	11/06/21	10:00	12:30	£85	HEX20122	■
Art - Painting and Drawing for Pleasure	Level 1	Fri	22/01/21	11/06/21	13:00	15:30	£85	HEX20123	■
PRUDHOE COURSES	LEVEL	DAY	START DATE	END DATE	START TIME	END TIME	FEE	CODE	
Art - Drawing and painting for Pleasure	Level 1	Wed	20/01/21	24/06/21	9:30	12:30	£80	PRU20074	■
Art - Painting and Drawing for Pleasure	Level 2	Thu	21/01/21	18/03/21	13:00	16:00	£85	PRU20076	■
Dressmaking Day	Level 1	Fri	29/01/21	29/01/21	9:30	16:00	£45	PRU20075	■

Why go anywhere
else when you can
#LiveAndLearnLocal



LOCATION KEY: ■ Alnwick ■ Ashington ■ Bedlington ■ Berwick ■ Blyth ■ Haydon Bridge ■ Hexham ■ Morpeth ■ Prudhoe

Education, Health & Social Care



Are you caring, patient and creative?
Do you have a lot of energy and great communication skills? Then, a career in education, health and social care could be perfect for you.

There are many rewarding jobs if you want to help look after those in your community. Our courses will prepare you for an inspiring career and you can make a real difference to someone's life. There are also plenty of opportunities to progress.

ALNWICK COURSES	LEVEL	DAY	START DATE	END DATE	START TIME	END TIME	FEE	CODE
Certificate in Counselling Skills	Level 2	Mon	18/01/21	05/07/21	13:30	16:30	FREE	ALN20092
Introduction to Counselling	Level 1	Wed	20/01/21	10/03/21	9:30	12:30	£73	ALN20093
*Introduction to Childcare	Level 1	Thu	21/01/21	02/04/21	9:30	12:30	£42	ALN20116
*Introduction to Childcare	Level 1	Thu	15/04/21	06/05/21	9:30	12:30	£42	ALN20117

*(Safeguarding in a Learning Environment + Award In Health and Safety Awareness)

ASHINGTON COURSES	LEVEL	DAY	START DATE	END DATE	START TIME	END TIME	FEE	CODE
Support Teaching and Learning	Level 2	Fri	22/01/21	23/06/21	9:30	12:30	£347	WW020057

BERWICK COURSES	LEVEL	DAY	START DATE	END DATE	START TIME	END TIME	FEE	CODE
Support Teaching and Learning	Level 2	Tue	19/01/21	29/06/21	9:30	12:30	£347	BER20061
Certificate in Introduction to Health, Social Care and Children's and Young People Settings	Level 1	Thu	21/01/21	07/07/21	13:00	16:00	£210	BER20045

BLYTH COURSES	LEVEL	DAY	START DATE	END DATE	START TIME	END TIME	FEE	CODE
Introduction to Children's Health and Nutrition	Level 1	Mon	18/01/21	08/03/21	9:30	12:30	£73	BLY20077
Certificate in Counselling Skills	Level 2	Mon	18/01/21	05/07/21	9:30	12:30	FREE	BLY20072
Certificate in Understanding Children & Young People's Mental Health	Level 2	Mon	18/01/21	05/07/21	13:00	16:00	FREE	BLY20074
Certificate Understanding Working in Health Care Sector	Level 2	Mon	18/01/21	05/07/21	12:30	16:00	FREE	BLY20075
Preparing to Work in Adult Social Care	Level 2	Mon	18/01/21	05/07/21	12:30	12:30	FREE	BLY20078
*Introduction to Childcare	Level 1	Tue	19/01/21	26/01/21	9:30	12:30	£42	BLY20084
Support Teaching and Learning	Level 2	Tue	19/01/21	22/06/21	9:30	12:30	£347	BLY20087
Certificate in Introduction to Health, Social Care and Children's and Young People Settings	Level 1	Wed	20/01/21	07/07/21	9:30	12:30	£210	BLY20073
Support Teaching and Learning	Level 2	Thu	21/01/21	24/06/21	9:30	12:30	£347	CRA20092
Understanding the Safe Handling of Medication	Level 2	Mon	22/02/21	17/05/21	9:30	12:30	FREE	CRA20090
Preparing to Work in a School	Level 1	Wed	24/02/21	14/07/21	9:30	12:30	£126	BLY20086
*Introduction to Childcare	Level 1	Tue	13/04/21	04/05/21	9:30	12:30	£42	BLY20085
Health and Nutrition in Early Years	Level 2	Thu	15/04/21	15/07/21	13:30	16:30	FREE	BLY20076

*(Safeguarding in a Learning Environment + Award In Health and Safety Awareness)

HEXHAM COURSES	LEVEL	DAY	START DATE	END DATE	START TIME	END TIME	FEE	CODE
Certificate in Introduction to Health, Social Care and Children's and Young People Settings	Level 1	Wed	20/01/21	08/07/21	13:00	16:00	£210	HEX20113
*Introduction to Childcare	Level 1	Wed	20/01/21	03/02/21	9:30	12:30	£42	HEX20141
Support Teaching and Learning	Level 2	Thu	21/01/21	24/06/21	9:30	12:30	£347	HEX20143
Introduction to Mental Health Awareness	Level 1	Mon	08/03/21	17/05/21	9:30	12:30	£73	HEX20114
*Introduction to Childcare	Level 1	Wed	14/04/21	05/05/21	9:30	12:30	£42	HEX20142

*(Safeguarding in a Learning Environment + Award In Health and Safety Awareness)

LOCATION KEY: ■ Alnwick ■ Ashington ■ Bedlington ■ Berwick ■ Blyth ■ Haydon Bridge ■ Hexham ■ Morpeth ■ Prudhoe



MORPETH COURSES

	LEVEL	DAY	START DATE	END DATE	START TIME	END TIME	FEE	CODE
Preparing to Work in Adult Social Care	Level 2	Mon	18/01/21	05/07/21	12:30	12:30	FREE	MOR20061
Award in Mentoring	Level 1	Tue	19/01/21	27/04/21	13:00	16:00	£126	MOR20059
Certificate in Counselling Skills	Level 2	Tue	19/01/21	05/07/21	13:00	16:00	FREE	MOR20060

PRUDHOE COURSES

	LEVEL	DAY	START DATE	END DATE	START TIME	END TIME	FEE	CODE
*Introduction to Childcare	Level 1	Wed	20/01/21	27/01/21	9:30	12:30	£42	PRU20088
Introduction to Behaviour Management	Level 1	Thu	21/01/21	11/02/21	9:30	12:30	£63	PRU20087
Health and Nutrition in Early Years	Level 2	Thu	21/01/21	25/03/21	9:30	12:30	FREE	PRU20067
Support Teaching and Learning	Level 2	Thu	21/01/21	24/06/21	9:30	12:30	£347	PRU20089
Health and Nutrition in Early Years	Level 2	Thu	15/04/21	15/07/21	9:30	12:30	FREE	PRU20068

*(Safeguarding in a Learning Environment + Award In Health and Safety Awareness)

ONLINE COURSES

	LEVEL	DAY	START DATE	END DATE	START TIME	END TIME	FEE	CODE
Certificate in Introduction to Health, Social Care and Children's and Young People Settings	Level 1	Mon	18/01/21	04/07/21	18:00	21:00	£210	ONL2006
Introduction to Children's Health and Nutrition	Level 1	Mon	18/01/21	08/03/21	18:00	21:00	£73	ONL2014
Award in Understanding Safeguarding in Education and Childcare Settings	Level 1	Mon	18/01/21	05/07/21	18:00	21:00	£189	ONL2027
Certificate in Awareness of Mental Health Problems	Level 2	Mon	18/01/21	05/07/21	9:30	15:00	FREE	ONL2003
Certificate in Mental Health Awareness	Level 2	Mon	18/01/21	04/07/21	18:00	21:00	FREE	ONL2007
Certificate in the Principles of Dementia Care	Level 2	Mon	18/01/21	04/07/21	18:00	21:00	FREE	ONL2008
Certificate in Understanding Nutrition & Health	Level 2	Mon	18/01/21	05/07/21	18:00	21:00	FREE	ONL2010
Certificate in Understanding Nutrition & Health	Level 2	Mon	18/01/21	05/07/21	9:30	12:30	FREE	ONL2011
Award in Information, Advice and Guidance	Level 2	Tue	19/01/21	27/04/21	18:00	21:00	FREE	ONL2001
Award in Mentoring	Level 2	Tue	19/01/21	27/04/21	18:00	21:00	FREE	ONL2002
Introduction to Counselling	Level 1	Wed	20/01/21	10/03/21	18:00	21:00	£73	ONL2015
*Introduction to Childcare	Level 1	Wed	20/01/21	27/01/21	18:00	21:00	£42	ONL2028
Certificate in Counselling Skills	Level 2	Wed	20/01/21	26/05/21	18:00	21:00	FREE	ONL2004
Certificate in Information Advice and Guidance	Level 2	Wed	20/01/21	07/07/21	18:00	21:00	FREE	ONL2005
Certificate in Understanding Children & Young People's Mental Health	Level 2	Wed	20/01/21	31/07/21	18:00	21:00	FREE	ONL2009
Health and Nutrition in Early Years	Level 2	Thu	21/01/21	25/03/21	18:00	21:00	FREE	ONL2013
Preparing to Work in a School	Level 1	Wed	24/02/21	14/07/21	18:00	21:00	£126	ONL2029
Introduction to Mental Health Awareness	Level 1	Mon	08/03/21	17/05/21	18:00	21:00	£73	ONL2016
Dementia Awareness	Level 1	Tue	09/03/21	27/04/21	18:00	21:00	£73	ONL2012
Award in Safeguarding in a Learning Environment	Level 1	Mon	12/04/21	12/05/21	18:00	21:00	£31	ONL2026

*(Safeguarding in a Learning Environment + Award In Health and Safety Awareness)

LOCATION KEY: ■ Alnwick ■ Ashington ■ Bedlington ■ Berwick ■ Blyth ■ Haydon Bridge ■ Hexham ■ Morpeth ■ Prudhoe

Employability

Supporting you to get back into work.

Learn new skills and improve your employability with our variety of short courses and personalised support. Whether you want to get back into work or progress your career, our job clubs and advice sessions can help you take the right steps.



Why go anywhere else when you can
#LiveAndLearnLocal

ALNWICK COURSES	LEVEL	DAY	START DATE	END DATE	START TIME	END TIME	FREE	CODE
Digital Skills for Employment Basics over 50s	Entry Level	Tue	19/01/21	19/01/21	9:30	16:30	FREE	ALN20118
Workwise (Interview Skills, Transferable Skills & 7 Second CV)	Level 1	Tue	19/01/21	06/03/21	10:00	15:30	FREE	ALN20125
Workwise (Interview Skills, Transferable Skills & 7 Second CV)	Level 1	Tue	09/02/21	11/02/21	10:00	15:30	FREE	ALN20126

ASHINGTON COURSES	LEVEL	DAY	START DATE	END DATE	START TIME	END TIME	FREE	CODE
Workwise (Interview Skills, Transferable Skills & 7 Second CV)	Level 1	Mon	18/01/21	20/01/21	10:00	15:30	FREE	WWO20076
Workwise - Taster for a Career in Administration	Entry Level	Thu	21/01/21	21/01/21	10:00	15:30	FREE	WWO20071
Workwise - Taster for a Career in Warehousing over 50s	Entry Level	Thu	28/01/21	28/01/21	10:00	15:30	FREE	WWO20075
Workwise - Taster for a Career in Retail over 50s	Entry Level	Tue	05/02/21	05/02/21	10:00	15:30	FREE	WWO20074
How to Write a Great CV	Entry Level	Wed	10/03/21	10/03/21	10:00	15:30	FREE	WWO20063
Workwise (Interview Skills, Transferable Skills & 7 Second CV)	Level 1	Tue	16/03/21	18/03/21	10:00	15:30	FREE	WWO20077
7 Second CV Booster over 50s	Entry Level	Fri	30/04/21	30/04/21	10:00	15:30	FREE	WWO20058
Workwise - Taster for a Career in Hospitality over 50s	Entry Level	Wed	05/05/21	05/05/21	10:00	15:30	FREE	WWO20073
Workwise - Taster for a Career in Care over 50s	Entry Level	Tue	11/05/21	11/05/21	10:00	15:30	FREE	WWO20072
Workwise - 3 steps to your First CV over 50s	Entry Level	Wed	27/05/21	27/05/21	10:00	15:30	FREE	WWO20070
How to Write a Great CV	Entry Level	Wed	23/06/21	23/06/21	10:00	15:30	FREE	WWO20064

BERWICK COURSES	LEVEL	DAY	START DATE	END DATE	START TIME	END TIME	FREE	CODE
Award in Developing Personal Confidence and Self Awareness	Level 1	Thu	21/01/21	07/05/21	13:00	15:00	£84	BER20046
Workwise (Interview Skills, Transferable Skills & 7 Second CV)	Level 1	Tue	16/02/21	18/02/21	10:00	15:30	FREE	BER20065

BLYTH COURSES	LEVEL	DAY	START DATE	END DATE	START TIME	END TIME	FREE	CODE
Award in Developing Personal Confidence and Self Awareness	Level 1	Tue	19/01/21	05/05/21	9:30	11:30	£84	BLY20090
Workwise - Taster for a Career in Administration	Entry Level	Fri	22/01/21	22/01/21	10:00	15:30	FREE	BLY20102
Workwise (Interview Skills, Transferable Skills & 7 Second CV)	Level 1	Mon	25/01/21	28/01/21	10:00	15:30	FREE	BLY20105
Workwise (Interview Skills, Transferable Skills & 7 Second CV)	Level 1	Tue	02/02/21	02/04/21	10:00	15:30	FREE	CRA20105
Workwise - 3 steps to your First CV over 50s	Entry Level	Wed	24/02/21	24/02/21	10:00	15:30	FREE	CRA20104
How to Write a Great CV	Entry Level	Mon	08/03/21	08/03/21	10:00	15:30	FREE	BLY20096
Workwise (Interview Skills, Transferable Skills & 7 Second CV)	Level 1	Wed	23/03/21	25/03/21	10:00	15:30	FREE	BLY20106
Workwise - Taster for a Career in Care over 50s	Entry Level	Mon	12/04/21	12/04/21	10:00	15:30	FREE	BLY20103
Digital Skills for Employment Basics over 50s	Entry Level	Fri	12/04/21	12/04/21	9:30	16:30	FREE	CRA20093
7 Second CV Booster over 50s	Entry Level	Wed	14/04/21	14/04/21	10:00	15:30	FREE	BLY20089
Workwise - Taster for a Career in Retail over 50s	Entry Level	Wed	21/04/21	21/04/21	10:00	15:30	FREE	BLY20104
Workwise - 3 steps to your First CV over 50s	Entry Level	Wed	28/04/21	28/04/21	10:00	15:30	FREE	BLY20101
7 Second CV Booster	Entry Level	Mon	21/06/21	21/06/21	10:00	15:30	FREE	BLY20088
Digital Skills for Employment Basics over 50s	Entry Level	Thu	24/06/21	24/06/21	9:30	16:30	FREE	CRA20094

LOCATION KEY: ■ Alnwick ■ Ashington ■ Bedlington ■ Berwick ■ Blyth ■ Haydon Bridge ■ Hexham ■ Morpeth ■ Prudhoe



HEXHAM COURSES

	LEVEL	DAY	START DATE	END DATE	START TIME	END TIME	FEE	CODE
Award in Developing Personal Confidence and Self Awareness	Level 1	Mon	18/01/21	26/4/21	9:30	11:30	£84	HEX20144
Workwise (Interview Skills, Transferable Skills & 7 Second CV)	Level 1	Wed	03/02/21	03/04/21	10:00	15:30	FREE	HEX20152
Digital Skills for Employment Basics over 50s	Entry Level	Tue	20/04/21	20/04/21	9:30	16:30	FREE	HEX20145

MORPETH COURSES

	LEVEL	DAY	START DATE	END DATE	START TIME	END TIME	FEE	CODE
Award in Developing Personal Confidence and Self Awareness	Level 1	Wed	20/01/21	06/05/21	9:30	11:30	£84	MOR20070
Workwise (Interview Skills, Transferable Skills & 7 Second CV)	Level 1	Tue	09/03/21	11/03/21	10:00	15:30	FREE	MOR20075

PRUDHOE COURSES

	LEVEL	DAY	START DATE	END DATE	START TIME	END TIME	FEE	CODE
7 Second CV Booster over 50s	Entry Level	Tue	19/01/21	19/01/21	10:00	15:30	FREE	PRU20090
Award in Developing Personal Confidence and Self Awareness	Level 1	Fri	22/01/21	08/05/21	13:00	15:00	£84	PRU20091
Workwise (Interview Skills, Transferable Skills & 7 Second CV)	Level 1	Tue	23/02/21	25/02/21	10:00	15:30	FREE	PRU20098

ONLINE COURSES

	LEVEL	DAY	START DATE	END DATE	START TIME	END TIME	FEE	CODE
Award in Developing Personal Confidence and Self Awareness	Level 1	Tue	19/01/21	05/05/21	18:00	20:00	£84	ONL2030

LOCATION KEY: ■ Alnwick ■ Ashington ■ Bedlington ■ Berwick ■ Blyth ■ Haydon Bridge ■ Hexham ■ Morpeth ■ Prudhoe



Northumberland
County Council

For more information visit
www.northumberland.gov.uk/apprenticeships



Apprenticeships

English, maths, ESOL & BSL



Gain the essential skills you need with our free English, maths, ESOL & BSL courses.

Become more confident using English, maths, ESOL & BSL in your everyday life. These courses will help to improve your skills, boost confidence, while at the same time you are gaining nationally recognised qualifications.

Our small class sizes and friendly lecturers show how these subjects are relevant to work and industry. Our team will help to guide you. Giving you access to the skills you need to progress to higher levels or into the workplace.

Courses are tailored to individual abilities, before this course you will be asked to complete a pre-course assessment.



ALNWICK COURSES	LEVEL	DAY	START DATE	END DATE	START TIME	END TIME	FEE	CODE
English - Functional Skills	Entry 1 to Level 2	Tue	05/01/21	06/07/21	9:30	11:00	FREE	ALN20119
English - Functional Skills	Entry 1 to Level 2	Tue	05/01/21	06/07/21	11:30	13:00	FREE	ALN20120
Maths - Functional Skills	Entry 1 to Level 2	Tue	05/01/21	06/07/21	9:30	11:00	FREE	ALN20122
Maths - Functional Skills	Entry 1 to Level 2	Tue	05/01/21	06/07/21	11:30	13:00	FREE	ALN20123
English - Functional Skills	Entry 1 to Level 2	Wed	06/01/21	07/07/21	14:00	16:30	FREE	ALN20121
Maths - Functional Skills	Entry 1 to Level 2	Wed	06/01/21	07/07/21	14:00	15:30	FREE	ALN20124
British Sign Language	Level 1	Wed	20/01/21	17/03/21	17:30	20:30	£70	ALN20115

ASHINGTON COURSES	LEVEL	DAY	START DATE	END DATE	START TIME	END TIME	FEE	CODE
English - Functional Skills	Entry 1 to Level 2	Wed	06/01/21	07/07/21	9:30	11:00	FREE	WW020059
Maths - Functional Skills	Entry 1 to Level 2	Wed	06/01/21	07/07/21	11:30	13:00	FREE	WW020067
English - Functional Skills	Entry 1 to Level 2	Fri	08/01/21	07/07/21	9:30	11:00	FREE	WW020060
**Introduction to Learning for Speakers of Other Languages	Pre-Entry	Tue	19/01/21	15/04/21	9:30	16:30	FREE	WW020065
English - Functional Skills	Entry 1 to Level 2	Thu	25/02/21	08/07/21	9:30	11:00	FREE	WW020061
Maths - Functional Skills	Entry 1 to Level 2	Thu	25/02/21	08/07/21	11:30	13:00	FREE	WW020068
English - Functional Skills	Entry 1 to Level 2	Thu	01/04/21	08/07/21	9:30	11:00	FREE	WW020062
Maths - Functional Skills	Entry 1 to Level 2	Thu	01/04/21	08/07/21	11:30	13:00	FREE	WW020069
**Introduction to Learning for Speakers of Other Languages	Pre-Entry	Tue	20/04/21	13/07/21	9:30	16:30	FREE	WW020066

**(Non-Regulated Pre-Entry ESOL Qualification)

BEDLINGTON COURSES	LEVEL	DAY	START DATE	END DATE	START TIME	END TIME	FEE	CODE
English - Functional Skills	Entry 1 to Level 2	Wed	06/01/21	07/07/21	9:30	11:00	FREE	BED20038
Maths - Functional Skills	Entry 1 to Level 2	Wed	06/01/21	07/07/21	11:30	13:00	FREE	BED20036
Entry Level Award in ESOL Skills for Life (Writing)	Entry 1	Tue	20/04/21	14/07/21	9:30	16:30	FREE	BED20041

LOCATION KEY: ■ Alnwick ■ Ashington ■ Bedlington ■ Berwick ■ Blyth ■ Haydon Bridge ■ Hexham ■ Morpeth ■ Prudhoe

BERWICK COURSES	LEVEL	DAY	START DATE	END DATE	START TIME	END TIME	FEE	CODE
English - Functional Skills	Entry 1 to Level 2	Tue	05/01/21	06/07/21	11:30	13:00	FREE	BER20063
Maths - Functional Skills	Entry 1 to Level 2	Tue	05/01/21	06/07/21	14:00	15:30	FREE	BER20064

BLYTH COURSES	LEVEL	DAY	START DATE	END DATE	START TIME	END TIME	FEE	CODE
English - Functional Skills	Entry 1 to Level 2	Thu	07/01/21	08/07/21	11:30	13:00	FREE	CRA20095
Maths - Functional Skills	Entry 1 to Level 2	Thu	07/01/21	06/07/21	9:30	11:00	FREE	CRA20103
**Introduction to Learning for Speakers of Other Languages	Pre-Entry	Tue	19/01/21	14/04/21	9:30	16:30	FREE	CRA20101
ESOL for Life in the UK Test	Entry 2	Fri	22/01/21	26/03/21	9:30	11:30	FREE	CRA20097
ESOL for the Driving Theory Test	Entry 2	Fri	22/01/21	19/03/21	12:30	15:00	FREE	CRA20099
English - Functional Skills	Entry 1 to Level 2	Thu	25/02/21	08/07/21	9:30	11:00	FREE	BLY20091
English - Functional Skills	Entry 1 to Level 2	Thu	25/02/21	08/07/21	11:30	13:00	FREE	BLY20092
Maths - Functional Skills	Entry 1 to Level 2	Thu	25/02/21	08/07/21	9:30	11:00	FREE	BLY20097
Maths - Functional Skills	Entry 1 to Level 2	Thu	25/02/21	08/07/21	11:30	13:00	FREE	BLY20098
English - Functional Skills	Entry 1 to Level 2	Thu	01/04/21	08/07/21	9:30	11:00	FREE	BLY20093
English - Functional Skills	Entry 1 to Level 2	Thu	01/04/21	08/07/21	11:30	13:00	FREE	BLY20094
Maths - Functional Skills	Entry 1 to Level 2	Thu	01/04/21	08/07/21	9:30	11:00	FREE	BLY20099
Maths - Functional Skills	Entry 1 to Level 2	Thu	01/04/21	08/07/21	11:30	13:00	FREE	BLY20100
ESOL for Life in the UK Test	Entry 2	Fri	16/04/21	02/07/21	9:30	11:30	FREE	CRA20098
ESOL for the Driving Theory Test	Entry 2	Fri	16/04/21	25/06/21	12:30	15:00	FREE	CRA20100
**Introduction to Learning for Speakers of Other Languages	Pre-Entry	Tue	20/04/21	13/07/21	9:30	16:30	FREE	CRA20102
Entry Level Award in ESOL Skills for Life (Writing)	Entry 1	Wed	21/04/21	14/07/21	9:30	16:30	FREE	BLY20095
Entry Level Award in ESOL Skills for Life (Writing)	Entry 1	Wed	21/04/21	14/07/21	9:30	16:30	FREE	CRA20096

**(Non-Regulated Pre-Entry ESOL Qualification)

HEXHAM COURSES	LEVEL	DAY	START DATE	END DATE	START TIME	END TIME	FEE	CODE
English - Functional Skills	Entry 1 to Level 2	Thu	07/01/21	08/07/21	9:30	11:00	FREE	HEX20146
Maths - Functional Skills	Entry 1 to Level 2	Thu	07/01/21	08/07/21	11:30	13:00	FREE	HEX20149
Creative Writing	Level 1	Mon	18/01/21	19/04/21	15:00	17:00	£75	HEX20131
English - Functional Skills	Entry 1 to Level 2	Thu	25/02/21	08/07/21	11:30	13:00	FREE	HEX20147
Maths - Functional Skills	Entry 1 to Level 2	Thu	25/02/21	08/07/21	9:30	11:00	FREE	HEX20150
English - Functional Skills	Entry 1 to Level 2	Thu	01/04/21	08/07/21	11:30	13:00	FREE	HEX20148
Maths - Functional Skills	Entry 1 to Level 2	Thu	01/04/21	08/07/21	9:30	11:00	FREE	HEX20151

MORPETH COURSES	LEVEL	DAY	START DATE	END DATE	START TIME	END TIME	FEE	CODE
English - Functional Skills	Entry 1 to Level 2	Tue	05/01/21	06/07/21	17:30	19:30	FREE	MOR20071
English - Functional Skills	Entry 1 to Level 2	Wed	06/01/21	07/07/21	14:00	15:30	FREE	MOR20072
Maths - Functional Skills	Entry 1 to Level 2	Wed	06/01/21	07/07/21	15:30	17:00	FREE	MOR20073
Maths - Functional Skills	Entry 1 to Level 2	Thu	07/01/21	06/07/21	17:30	19:00	FREE	MOR20074
Creative Writing	Level 1	Mon	18/01/21	19/04/21	10:00	12:00	£75	MOR20067

PRUDHOE COURSES	LEVEL	DAY	START DATE	END DATE	START TIME	END TIME	FEE	CODE
English - Functional Skills	Entry 1 to Level 2	Wed	06/01/21	07/07/21	11:30	13:00	FREE	PRU20092
English - Functional Skills	Entry 1 to Level 2	Wed	06/01/21	07/07/21	15:30	17:00	FREE	PRU20093
Maths - Functional Skills	Entry 1 to Level 2	Wed	06/01/21	07/07/21	9:30	11:00	FREE	PRU20096
Maths - Functional Skills	Entry 1 to Level 2	Wed	06/01/21	07/07/21	13:30	15:00	FREE	PRU20097
English - Functional Skills	Entry 1 to Level 2	Thu	25/02/21	08/07/21	11:30	13:00	FREE	PRU20094
English - Functional Skills	Entry 1 to Level 2	Thu	25/02/21	08/07/21	15:30	17:00	FREE	PRU20095

ONLINE COURSES	LEVEL	DAY	START DATE	END DATE	START TIME	END TIME	FEE	CODE
Creative Writing - Developing Themes	Level 1	Mon	18/01/21	01/03/21	18:00	20:15	£40	ONL2025
Creative Writing	Level 1	Mon	18/01/21	19/04/21	18:00	20:00	£75	ONL2021
Creative Writing - Developing Characters	Level 1	Mon	22/02/21	22/03/21	18:00	20:15	£40	ONL2023
Creative Writing - Crime and Adventure Stories	Level 1	Mon	12/04/21	24/05/21	18:00	20:15	£40	ONL2022
Creative Writing - Developing the Scene and Environment	Level 1	Mon	07/06/21	12/07/21	18:00	20:15	£40	ONL2024

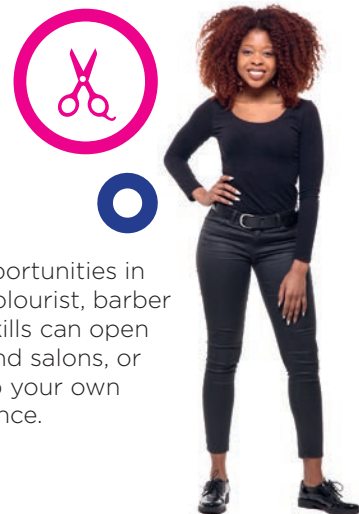
LOCATION KEY: ■ Alnwick ■ Ashington ■ Bedlington ■ Berwick ■ Blyth ■ Haydon Bridge ■ Hexham ■ Morpeth ■ Prudhoe

Hairdressing & Barbering

If you have a passion for making people look and feel their best and you enjoy being sociable then look no further than a career in Hairdressing and Barbering

At our professional centre at Haydon Bridge you'll experience what it's like to work in a salon. You'll develop skills such as shampooing and conditioning, cutting and dressing hair, colouring and consultation. You will also develop a sound knowledge of health and safety and gain the customer service skills needed to make you work ready.

There are many job opportunities in this sector, including: colourist, barber and hairdresser. Your skills can open opportunities in spas and salons, or you may want to set up your own business or work freelance.



HAYDON BRIDGE COURSES	LEVEL	DAY	START DATE	END DATE	START TIME	END TIME	LEE	CODE
Intro to Hairdressing - Plaits & Twists	Level 1	Tue	12/01/21	26/01/21	17:00	19:00	£21	HAY20035
Certificate in Barbering	Level 2	Thu	21/01/21	15/07/21	9:30	16:30	£250	HAY20032
Certificate in Hairdressing	Level 2	Thu	21/01/21	15/07/21	9:30	16:30	£250	HAY20033
Understanding Colour for Home Hair Colours	Level 1	Tue	02/02/21	23/02/21	17:00	19:00	£21	HAY20039

LOCATION KEY: ■ Alnwick ■ Ashington ■ Bedlington ■ Berwick ■ Blyth ■ Haydon Bridge ■ Hexham ■ Morpeth ■ Prudhoe

Horticulture

Northumberland has a rich history in farming and land management.

We have a range of courses from an introduction to garden design, where you will learn the basic principles and practices of how to survey and produce scale plans, to Level 3 chainsaw maintenance and cross cutting; which offers you hands-on sessions where you'll be walked through health and safety rules and regulations whilst learning maintenance tips and tricks. These practical sessions allow you to develop and hone your skills at cross-cutting, tree felling and branch removal.

ALNWICK COURSES	LEVEL	DAY	START DATE	END DATE	START TIME	END TIME	LEE	CODE
Chainsaw Maintenance and Crosscutting	Level 2	Tue + Wed	19/01/21	20/01/21	9:30	16:30	£200	ALN20095
Chainsaw Maintenance and Crosscutting	Level 2	Tue + Wed	05/02/21	06/02/21	9:30	16:30	£200	ALN20096
Gardening Workshop - Seeds and Planting for the Year Ahead	Level 1	Tue	22/02/21	22/03/21	10:00	12:30	£55	ALN20102
Chainsaw Maintenance Crosscutting & Felling Small Trees upto 380mm	Level 3	Mon-Fri	15/03/21	19/03/21	9:30	16:30	£500	ALN20100
Gardening Workshop - Planting for a Fruitful Summer	Level 1	Tue	13/04/21	13/05/21	10:00	12:30	£55	ALN20101
Grow Your Own	Level 1	Tue	13/04/21	25/05/21	17:00	20:00	£55	ALN20103
Bushcutters and Trimmers	Level 2	Tue + Wed	20/04/21	21/04/21	9:30	16:30	£200	ALN20094
^Chainsaw Maintenance Crosscutting & Felling Small Trees upto 200mm	Level 3	Mon-Fri	11/05/21	12/05/21	9:30	16:30	£200	ALN20099
Chainsaw Maintenance and Crosscutting	Level 2	Tue + Wed	15/06/21	16/06/21	9:30	16:30	£200	ALN20097
Chainsaw Maintenance and Crosscutting	Level 2	Tue + Wed	20/07/21	21/07/21	9:30	16:30	£200	ALN20098

(*prerequisite maintenance and crosscutting)

HEXHAM COURSES	LEVEL	DAY	START DATE	END DATE	START TIME	END TIME	LEE	CODE
Introduction to Garden Design	Level 1	Wed	20/01/21	09/06/21	15:45	19:30	£85	HEX20116
Grow Your Own	Level 1	Wed	14/04/21	26/05/21	17:30	20:30	£55	HEX20115

LOCATION KEY: ■ Alnwick ■ Ashington ■ Bedlington ■ Berwick ■ Blyth ■ Haydon Bridge ■ Hexham ■ Morpeth ■ Prudhoe



Languages

Classes designed for real life.

Northumberland Learning and Skills offer many language courses at different levels. Our highly popular classes use a blend of online and socially distanced lessons. Our courses range from French, German and Italian to Japanese, Russian and Greek.

Languages are taught in three steps:

- **Step 1** Develop
- **Step 2** Improve
- **Step 3** Consolidate



You will have an initial assessment to determine your skill level and starting point.

We offer short and intensive if you need to learn in a hurry, or want a refresher, as well as our one-day taster sessions.

If you want to delve into our local history and learn more about Latin and Hadrian's Wall, then our Veni Vidi Vici is the course for you.

Discover the benefits of learning a second language and how it can help keep the mind sharp whilst boosting listening skills and confidence.

BEDLINGTON COURSES

	LEVEL	DAY	START DATE	END DATE	START TIME	END TIME	FEE	CODE
Beginners Spanish (Step 1)	Entry Level	Tue	26/01/21	11/05/21	12:00	14:00	£70	BED20039
Improve your Spanish (Step 2)	Level 1	Tue	26/01/21	11/05/21	14:30	16:30	£70	BED20040

LOCATION KEY: ■ Alnwick ■ Ashington ■ Bedlington ■ Berwick ■ Blyth ■ Haydon Bridge ■ Hexham ■ Morpeth ■ Prudhoe

Languages (continued)

BERWICK COURSES	LEVEL	DAY	START DATE	END DATE	START TIME	END TIME	FEE	CODE
Beginners Spanish (Step 1)	Entry Level	Thu	21/01/21	29/04/21	10:00	12:00	£70	BER20056
Improve your Spanish (Step 2)	Level 1	Thu	21/01/21	29/04/21	17:30	19:30	£70	BER20057
Spanish - Conversation Advanced	Level 2	Thu	21/01/21	29/04/21	12:30	14:30	£70	BER20059
Spanish - Conversation Intermediate	Level 2	Thu	21/01/21	29/04/21	15:00	17:00	£70	BER20060
Intensive One-Day Spanish	Level 1	Mon	07/06/21	07/06/21	10:00	16:00	£45	BER20058

BLYTH COURSES	LEVEL	DAY	START DATE	END DATE	START TIME	END TIME	FEE	CODE
Beginners Greek (Step 1)	Entry Level	Thu	22/04/21	15/07/21	17:00	18:30	£70	BLY20083
Intensive One-Day German	Level 1	Wed	23/06/21	23/06/21	10:00	16:00	£45	CRA20091

HEXHAM COURSES	LEVEL	DAY	START DATE	END DATE	START TIME	END TIME	FEE	CODE
Beginners Latin: First Steps for Absolute Beginners (Step 1)	Entry Level	Tue	05/01/21	13/04/21	9:00	11:00	£70	HEX20127
Latin: Continuum (Step 2)	Level 1	Tue	05/01/21	13/04/21	11:30	13:30	£70	HEX20139
Latin & Hadrian's Wall: Veni Vidi Vici	Level 2	Tue	05/01/21	13/04/21	14:30	16:30	£70	HEX20137
Beginners Spanish (Step 1)	Entry Level	Wed	20/01/21	21/04/21	14:30	16:30	£70	HEX20128
Consolidate your Spanish (Step 3)	Level 2	Wed	20/01/21	21/04/21	12:00	14:00	£70	HEX20130
Spanish - Conversation Intermediate	Level 2	Wed	20/01/21	21/04/21	9:30	11:30	£70	HEX20140
Beginners German (Step 1)	Entry Level	Thu	21/01/21	15/04/21	11:30	13:30	£70	HEX20124
Improve your German (Step 2)	Level 1	Thu	21/01/21	15/04/21	13:45	15:15	£70	HEX20132
Beginners Latin: First Steps for Absolute Beginners (Step 1)	Entry Level	Tue	20/04/21	13/07/21	9:00	11:00	£70	HEX20126
Latin: Continuum (Step 2)	Level 1	Tue	20/04/21	13/07/21	11:30	13:30	£70	HEX20138
Latin & Hadrian's Wall: Veni Vidi Vici	Level 2	Tue	20/04/21	13/07/21	14:30	16:30	£70	HEX20136
Beginners German (Step 1)	Entry Level	Thu	22/04/21	15/07/21	12:00	14:00	£70	HEX20125
Improve your German (Step 2)	Level 1	Thu	22/04/21	15/07/21	14:15	16:15	£70	HEX20133
Consolidate your German (Step 3)	Level 2	Thu	22/04/21	15/07/21	16:30	18:30	£70	HEX20129
Intensive One-Day German	Level 1	Wed	16/06/21	16/06/21	10:00	16:00	£45	HEX20134
Intensive One-Day Spanish	Level 1	Tue	29/06/21	29/06/21	10:00	16:00	£45	HEX20135

MORPETH COURSES	LEVEL	DAY	START DATE	END DATE	START TIME	END TIME	FEE	CODE
Beginners Spanish (Step 1)	Entry Level	Mon	25/01/21	10/05/21	13:00	15:00	£70	MOR20066
Improve your Spanish (Step 2)	Level 1	Mon	25/01/21	10/05/21	10:00	12:00	£70	MOR20068
Intensive One-Day Spanish	Level 1	Mon	14/06/21	14/06/21	10:00	16:00	£45	MOR20069

PRUDHOE COURSES	LEVEL	DAY	START DATE	END DATE	START TIME	END TIME	FEE	CODE
Beginners German (Step 1)	Entry Level	Mon	18/01/21	26/04/21	10:30	11:30	£70	PRU20077
Improve your German (Step 2)	Level 1	Mon	18/01/21	26/04/21	11:45	13:45	£70	PRU20083
Consolidate your German (Step 3)	Level 2	Mon	18/01/21	26/04/21	14:30	16:30	£70	PRU20080
Beginners Spanish (Step 1)	Entry Level	Thu	21/01/21	22/04/21	12:30	14:30	£70	PRU20079
Consolidate your Spanish (Step 3)	Level 2	Thu	21/01/21	22/04/21	14:30	16:30	£70	PRU20082
Spanish - Conversation Intermediate	Level 2	Thu	21/01/21	22/04/21	10:00	12:00	£70	PRU20086
Beginners German (Step 1)	Entry Level	Mon	19/04/21	12/07/21	11:30	11:30	£70	PRU20078
Improve your German (Step 2)	Level 1	Mon	19/04/21	12/07/21	11:15	13:15	£70	PRU20084
Consolidate your German (Step 3)	Level 2	Mon	19/04/21	12/07/21	14:00	16:00	£70	PRU20081
Intensive One-Day German	Level 1	Mon	21/06/21	21/06/21	10:00	16:00	£45	PRU20085

ONLINE COURSES	LEVEL	DAY	START DATE	END DATE	START TIME	END TIME	FEE	CODE
Beginners German (Step 1)	Level 1	Mon	18/01/21	26/04/21	18:00	20:00	£70	ONL2019
Beginners Spanish (Step 1)	Level 1	Mon	25/01/21	10/05/21	18:00	20:00	£70	ONL2020

LOCATION KEY: ■ Alnwick ■ Ashington ■ Bedlington ■ Berwick ■ Blyth ■ Haydon Bridge ■ Hexham ■ Morpeth ■ Prudhoe



Why go anywhere else when you can #LiveAndLearnLocal

Your support network explained

From course choices and completing your application, to understanding the academic, financial and social support available to you our teams are here to help.



FINDING THE PERFECT COURSE

Choosing the correct study level and course for you isn't always easy. Our team of specialist curriculum leads can help to understand your skills, experience and aspirations to ensure that you start at the correct level, in a subject area or career that you want to pursue. You can find out more about subject areas and specific course information at:

www.northumberland.gov.uk/learn or
www.northumberland.gov.uk/careers

SECURING YOUR PLACE ON A COURSE

First of all, you need to choose a course, if you need any help please contact your nearest campus team (details on back cover), then complete an enrolment form either online, in person or on the phone. Some courses will require an initial assessment to ensure you start your learning journey at the right place for you. Our enrolment team will then secure your place and give you all the information you need to start your journey.

DYSLEXIA SUPPORT



We can offer advice on learning strategies, learning support sessions and a brief screening or exam assessment – speak to us at the start of your course.

SIGN LANGUAGE AND LIP READING



Our British Sign Language and lip-reading courses are available across Northumberland. British Sign Language courses have a small fee, but these can be waived in some circumstances. Lip-reading is provided free to all learners. We have signing and translating lecturers available if required.

COUNSELLING SERVICE



We can provide support if you're facing a tough time outside the classroom or workplace. If you are a learner with us and have been referred by our Learner Support Service, counselling is free. All our counsellors are fully qualified members of the British Association for Counselling and Psychotherapy.

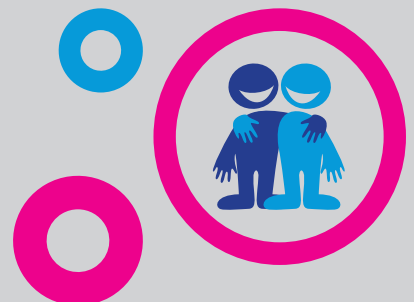
KEEPING YOU SAFE

Your safety is paramount and we have detailed safeguarding policies and procedures in place. You can talk to our Safeguarding Champions if you have any concerns or report via our safeguarding portal tootoot.



EQUALITY

Northumberland Learning and Skills aims to advance equality, tackle discrimination and build good community relations. We will protect you from disadvantage, inappropriate behaviour, discrimination or victimisation on the grounds of race, economic or social background, gender, age, religion or belief, disability and sexual orientation.



Giving you the edge

We are passionate about your success and have designed our courses to inspire you - boosting your skills, confidence and achievements.

BE INSPIRED

We are here to support your learning journey and provide the tools you need to connect you to lecturers with occupational specific expertise. Their focus is you.

MEET AND STAY CONNECTED

Our classes are small, friendly and welcoming. They offer you the opportunity to meet like-minded people using online platforms and socially distanced groups.

SKILLS FOR WORK

Our team of advisors and teaching staff will guide and support you to choose your next steps into further/higher education, advance your career, start your own business, find employment or to retrain.

Next steps

Come and find out more about our wide range of courses, see our facilities and get a taste of student life by visiting one of our campuses.

We offer courses for adults (aged 19 years and over) at 10 locations across the county, see the map opposite for further details.

YOUR SAFETY IS OUR PRIORITY

Rest assured that we are taking all the necessary precautions and have put measures in place to ensure that you feel safe and secure in our learning environments. Our team of curriculum specialists are also available over the telephone and online. Contact your local campus (see back cover for contact details) to speak to our team about your application, course choice and for advice on any part of the enrolment process.



Find out why OFSTED rated us
GOOD with OUTSTANDING features.



Northumberland County Council



Where learning works for you

Call your local campus - lines open Mon-Fri 9am to 5pm.

learn@northumberland.gov.uk

www.northumberland.gov.uk/learn

ALNWICK CAMPUS

Lindisfarne Road, Alnwick,
NE66 1AX.
Tel: 01670 623 691

BEDLINGTON CAMPUS

Jubilee Terrace,
Bedlington, NE22 5HB.
Tel: 01670 623 687
(Closed on Fridays)

BERWICK CAMPUS

Walkergate Building,
Walkergate,
Berwick upon Tweed, TD15 1DB.
Tel: 01670 626 107

BLYTH CAMPUS

Brunel Building,
Blyth, NE24 1LT.
Tel: 01670 622 099

HAYDON BRIDGE CAMPUS

Haydon Bridge High School,
NE47 6LR.
Tel: 01670 622 258

WENTWORTH HEXHAM

Wentworth Leisure Centre,
Hexham, NE46 3PD.
Tel: 01670 623 701

MORPETH CAMPUS

Cottingwood Lane,
Morpeth, NE61 1DN.
Tel: 01670 622 257

FUSE PRUDHOE

Moor Road, Prudhoe,
NE42 5LJ.
Tel: 01670 623 689 or 688

WANSBECK WORKSPACE

(ASHINGTON)
Rotary Parkway,
Ashington, NE63 8QZ.
Tel: 01670 623 894

DISCLAIMER

Northumberland County Council takes all reasonable steps to provide the services and courses described in this guide. However, it does not guarantee the provision of such services. The provision of courses is dependent on there being sufficient demand and funding to make their operation viable.

The information provided in this guide is, to the best of our knowledge, accurate at the time of going to print. We accept no liability for any errors or omissions and we reserve the right to alter, amend or remove courses listed without notice. Our course offer is subject to changes in availability and venue in line with Government guidelines and recommendations to ensure the health and safety of all learners, staff and the wider community.

OTHER FORMATS

If you need this information in large print, Braille, Audio, or in another format or language please contact us: 01670 622 099. If you are Deaf or can't speak on the phone, contact us using Relay UK. Download the Relay UK app or using your existing text phone prefix our dedicated text Relay number: 018001 01670 623 515. British Sign Language users can contact us using an online sign language interpreting service: northumberlandcc-cs.signvideo.net



@NorthumberlandCC



@nlandcc



@N_landCouncil

The photography used in this publication was taken pre-Covid-19. All learners will be required to follow health and safety procedures aligned to government guidelines, including appropriate use of PPE and social distancing.