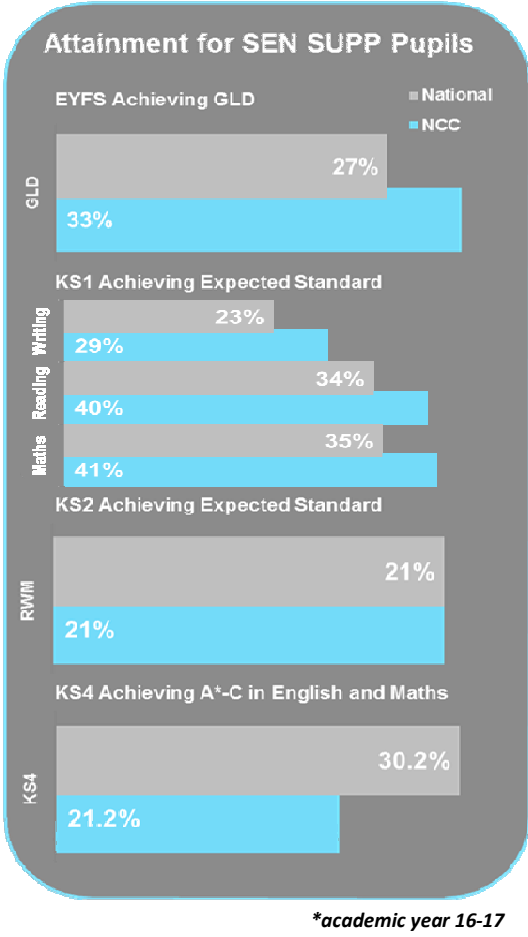
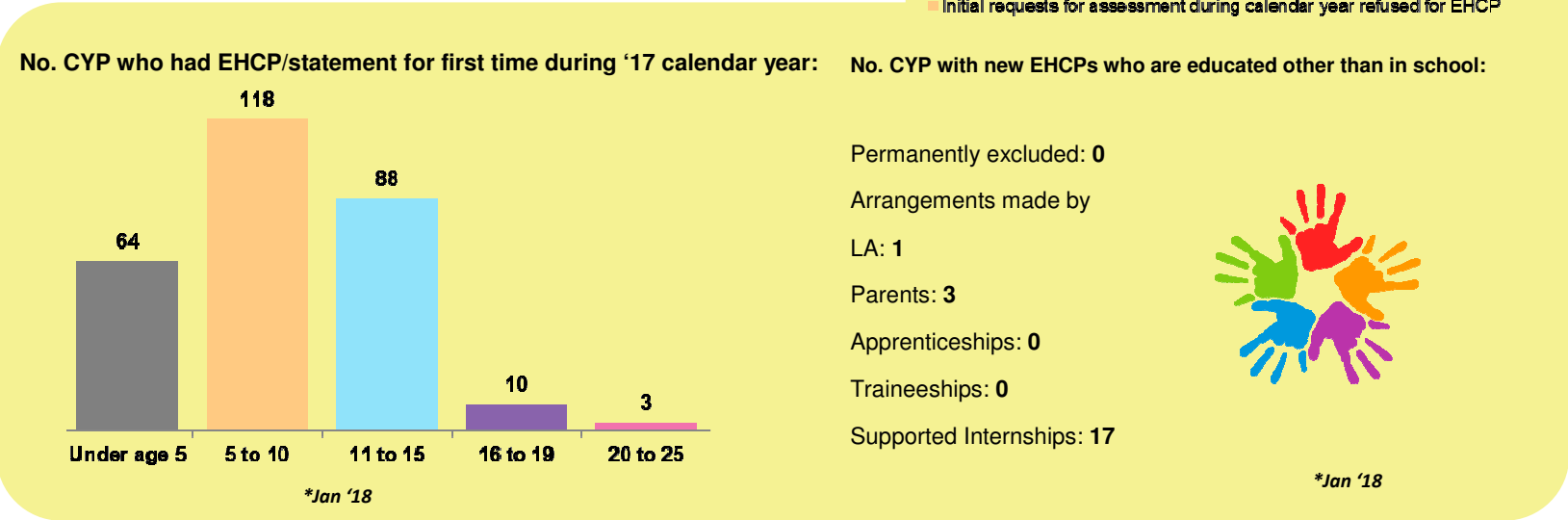
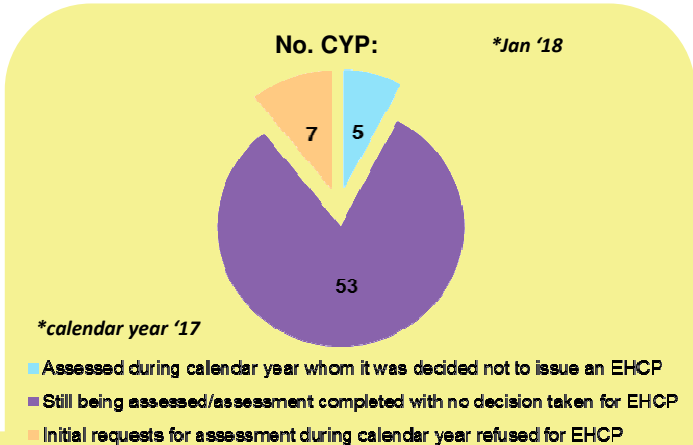
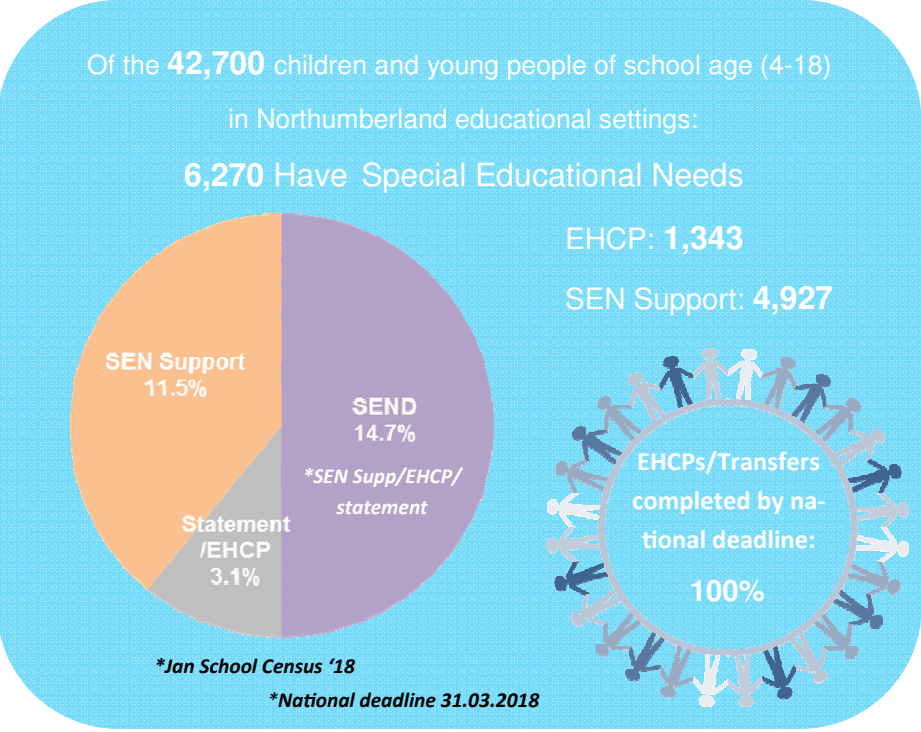


SPECIAL EDUCATIONAL NEEDS

THE CURRENT SITUATION



All Special Education Establishments
judged as **GOOD/BETTER**
**Data as at March '18*



SPECIAL EDUCATIONAL NEEDS

THE CURRENT SITUATION

MLD: Moderate Learning Difficulty

SLD: Severe Learning Difficulty

ASD: Autistic Spectrum Disorder

OTH: Other Difficulty/Disability

PMLD: Profound & Multiple Learning Difficulties

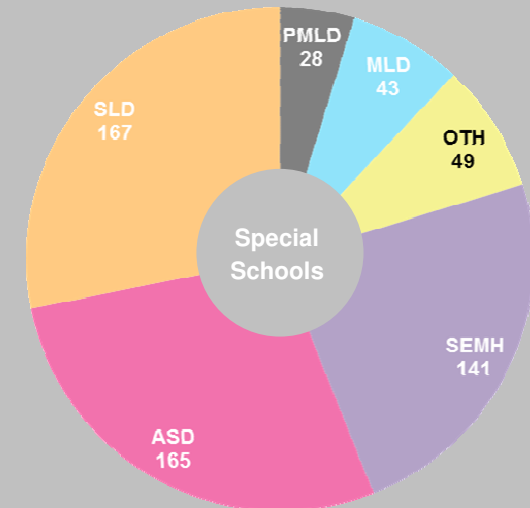
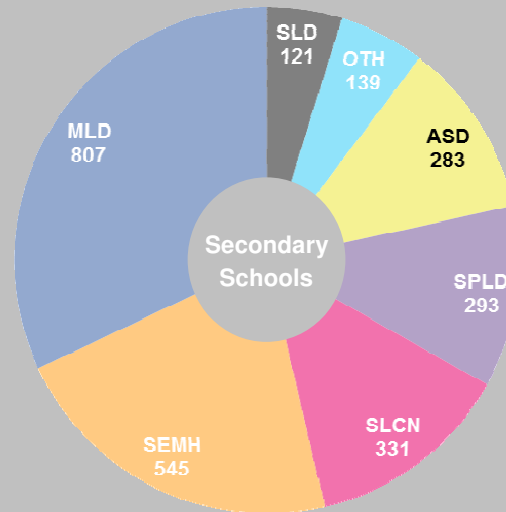
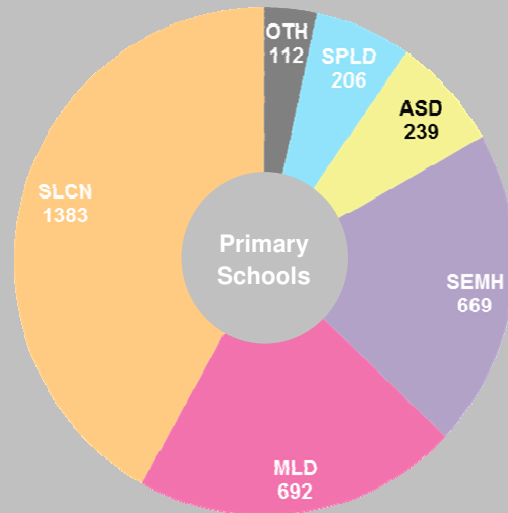
SEMH: Social, Emotional and Mental Health

SLCN: Speech, Language or Communication Difficulty

SPLD: Specific Learning Difficulty

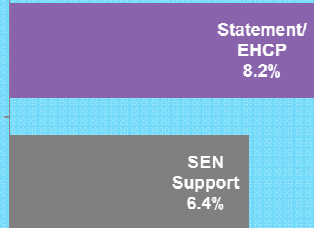
Primary Need Breakdown in Northumberland Schools:

*Jan '18 School census



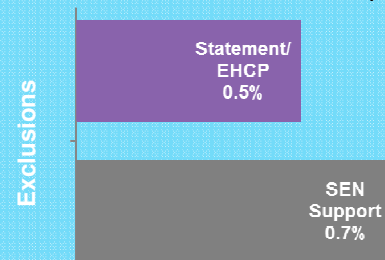
Absence and Exclusions

Overall Absence



*Total absence sessions ÷ total sessions possible

Permanent Exclusions



*Child can no longer attend school

*16-17 academic year

% CYP with new statement/EHCP 17-18 (Jan-Dec) educated

*Jan'18

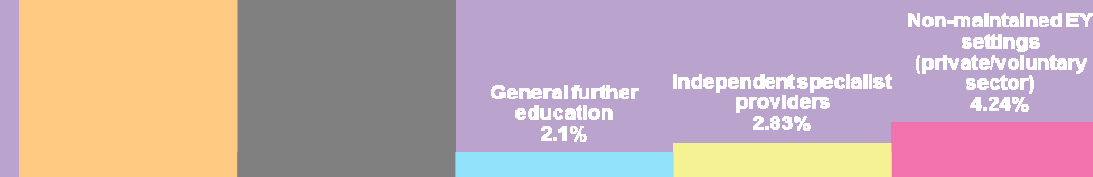
Maintained mainstream schools
33.6%

Maintained special schools
23.7%

No. EHCP/statement before 1st Jan who transferred during calendar year:

2 from mainstream settings

2 from special settings



*Some pupils educated in alternative provisions



How we compare

Breakdown of pupils with statements/ EHC plans as % of whole school population:

Gateshead	3.1%
Newcastle	2.5%
Sunderland	2.6%
North East	3.0%
England	2.8%
Northumberland	2.9%

*Statistical First Release '17