

# MPN NEWSLETTER



SCHOOLS NEWSLETTER JUNE 2021

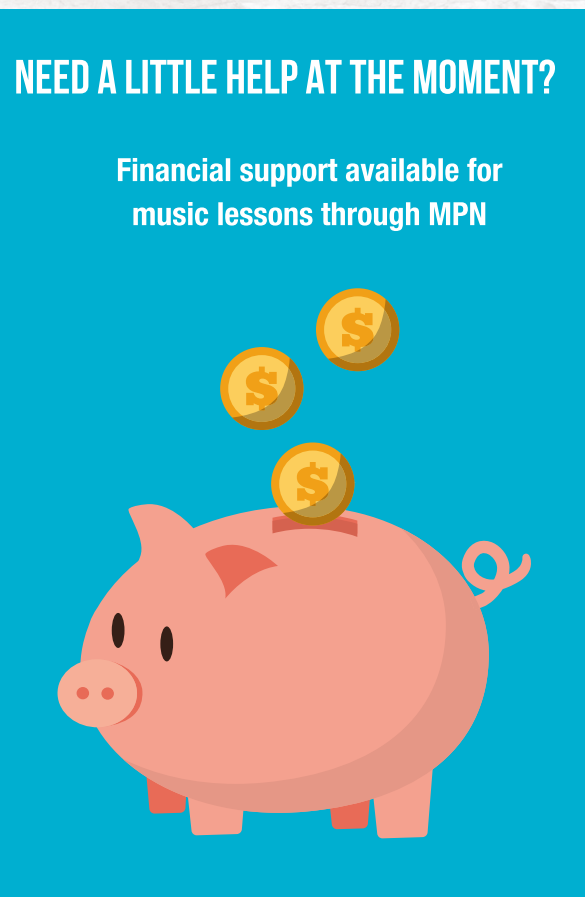
Music Partnership North 01670 624045

<https://music.northumberland.gov.uk>



## CULTURAL RECOVERY FUND

We were thrilled to hear that we have received funding thanks to the government's #CultureRecoveryFund so that we can continue to be here for you and #HereForCulture. Visit our [website](#) for more info on what we are doing.



## WE ARE HERE TO HELP!

We want to support as many students as possible continuing with their musical tuition. Through the Cultural Recovery Fund, we are offering financial assistance to families who have been directly affected by Covid-19. Click [here](#) to apply

# LET'S WORK TOGETHER TO GET MUSIC BACK INTO ALL SCHOOLS

Music Partnership North 01670 624045

<https://music.northumberland.gov.uk>



## 21/22 MUSIC SLA - HAVE YOU ACCESSED YOUR ALLOCATED FUNDING YET?

Our full offer is available online, click here to view the full [brochure](#) and make sure you don't miss out. All prices have been frozen from 19/20. We have a few new packages including a full early years programme and in instrument library membership. Book now to secure a package, click [here](#).



"... they have given my son the very best start in life towards learning Music. He has achieved so very much because of MPN..."

"Not only have musical skills improved, concentration, co-operation and listening skills have benefited too. This is exactly what I was hoping for. Thank You!"



### INSTRUMENTAL/VOCAL TUITION FOR ALL

At music partnership north we offer all

## TUITION IN SEPTEMBER

You will by now have received flyers regarding tuition in September. We would ask you share these with your parents and encourage them to sign up for tuition in preparation for September. Any queries just email [Lesley.Scott@northumberland.gov.uk](mailto:Lesley.Scott@northumberland.gov.uk)



## REMISSION FOR HIGHER LEVEL MUSIC STUDENTS

Don't forget that PM offer all students in receipt of instrumental tuition from an MPN tutor £30 towards their instrumental/vocal lessons. Please help spread the word and make sure families are claiming this financial support. for more information contact [Lesley.Scott@northumberland.gov.uk](mailto:Lesley.Scott@northumberland.gov.uk)



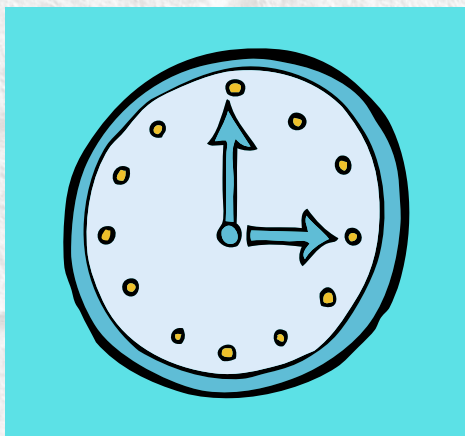
## MUSICAL TRANSITION DAYS

As you prepare your students for changing schools following a very challenging and disruptive year, music can bring a creative, engaging and supportive element to your pyramid transition day. It is essential that we work together to create a clear progression route for students to continue to learn music. Email [David.Francis@northumberland.gov.uk](mailto:David.Francis@northumberland.gov.uk) for more information.

# LET'S WORK TOGETHER TO GET MUSIC BACK INTO ALL SCHOOLS

Music Partnership North 01670 624045

<https://music.northumberland.gov.uk>



## MAKE MUSIC DAY - 1 MINUTE OF MUSIC

Schools from across Northumberland and Newcastle have joined forces to create a video celebration of their musical lives. Each school has recorded a one-minute video snapshot of musical activities. The videos have been edited together and will go live on our YouTube channel at 10am on Make Music Day - 21st June.

[Youtube.com/musicpartnershipnorth](https://www.youtube.com/musicpartnershipnorth)

## MUSICAL ME DISCOUNTED ONLINE COURSES TO MPN PRIMARY SCHOOLS

Musical Me is an online CPD training provider dedicated to helping teachers deliver the primary music curriculum confidently. They are currently offering 30% discount to each course.

The three courses support singing, leading groups and reviewing and understanding music theory. All courses fully accredited by CPD UK, can be accessed at any time and are drop in and out without losing progress. For further details please visit [academy.themusicalme.com](https://academy.themusicalme.com) to get your 30% discount.

**MUSICAL ME** MUSIC PARTNERSHIP NORTH  
Dedicated to improving primary music education.

**30% DISCOUNT!** FOR MPN SCHOOLS

**ONLINE CPD COURSES AVAILABLE NOW:**

KEY MUSIC THEORY	FOLLOW THE LEADER	PITCH PERFECT
The basic fundamentals of music theory, and how to use them in your classroom.	Leading & conducting music groups and classrooms confidently.	Everyone can sing - here's how! How to sing and lead vocal groups effectively.
£29.99 per user.	£29.99 per user.	£29.99 per user.

**YouTube** SUBSCRIBE

**MUSIC PARTNERSHIP NORTH**

**UNITY THROUGH MUSIC 2**

**Northumberland County Council**

## UNITY THROUGH MUSIC 2

Following on from the success of Unity Through Music, we are doing it again but bigger! Over 100 students will come together to perform online. Please put the 30th June in your diary and support the students who have worked tirelessly online preparing for this celebration. Please remember to subscribe to our YouTube channel: [musicpartnershipnorth](https://www.youtube.com/musicpartnershipnorth) to keep up to date with all the latest resources and videos.

# LET'S WORK TOGETHER TO GET MUSIC BACK INTO ALL SCHOOLS

Music Partnership North 01670 624045

<https://music.northumberland.gov.uk>

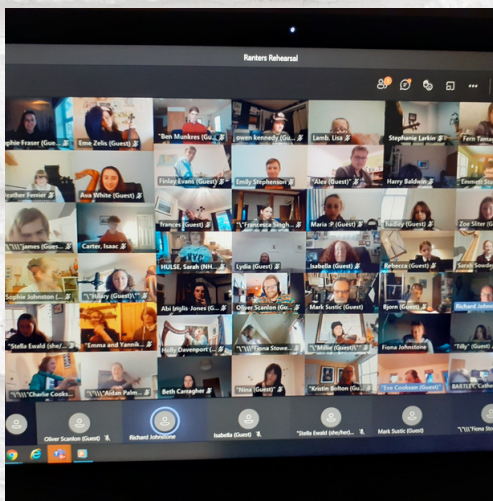


## MUSIC CPD FOR ALL SCHOOLS

There is still time to buy into the Music CPD online training package for only **£100** for the whole year. That's less than **£12** per session for as many members of staff you want to send along, AND you get 2 one to one coaching sessions.

This one-off fee will provide your school and all school staff access to online sessions, one to one support, resources and free Music Mark membership.

Go into your school SLA portal, sign up and give yourself the peace of mind that music CPD is sorted for 21-22.



## THE NORTHUMBRIAN RANTERS GO INTERNATIONAL DURING LOCKDOWN

MPN's traditional music ensemble, The Ranters, held a truly international online rehearsal in May with students from Vermont USA and Canada, joining them for a jam packed evening of tune sharing and fun. There was also a lot of talk about haggis and yellow school buses. It truly was inspiring and amazing to see how resilient and inquisitive our young musicians really are.

Keep up to date with all our latest information by following us through:



[music partnership north](https://www.facebook.com/musicpartnershipnorth)



[twitter](https://twitter.com/musicpartnershipnorth)



SUBSCRIBE

Supported using public funding by



ARTS COUNCIL ENGLAND

If you would like to discuss in more details any of the above either visit our website <https://music.northumberland.gov.uk> or email [Fiona.Johnstone@northumberland.gov.uk](mailto:Fiona.Johnstone@northumberland.gov.uk)