

MPN NEWSLETTER

SCHOOLS NEWSLETTER NOVEMBER 24



mpn@northumberland.gov.uk

<https://music.northumberland.gov.uk>

CHRISTMAS CHOIR COMPETITION

**The best way to spread Christmas
cheer is by singing loud for all to
hear!**

Thank you to everyone who entered our Northumberland Schools Christmas Choir Competition 2024!

We look forward to seeing our finalists perform live on Monday 9th December in Morpeth. The winner will then represent Northumberland at the Durham Choir Festival.

ho ho ho!



MUSIC WORKSHOP WITH THE TIM KLIPHUIS TRIO

A joint workshop with the Morpeth Music Society organised by our woodwind tutor Rachael Cabey took place earlier this month in Morpeth, featuring the Tim Kliphuis Trio. The trio performed and shared insights on life as professional musicians, their career inspirations, and the history of jazz. Three students from King Edward's High School – Isobel Ellerbrook (clarinet), Murray Davies (piano), and Sophie Fraser (Northumbrian pipes)—performed and received fantastic feedback. Students from Chantry and Newminster middle school also attended. It was a great to hear the performances and have an opportunity to ask questions. An inspiring, musical day for all.



WHAT'S HAPPENING IN THE CLASSROOM

Supported using public funding by
Department for Education | ARTS COUNCIL ENGLAND

mpn@northumberland.gov.uk

<https://music.northumberland.gov.uk>



AWARD OF THE MONTH

Music Partnership North's latest Star Learner is Ada from Berwick. Ada has been working with her tutor Frances Orde who nominated her for the award, saying;

"Ada has just passed grade 1 violin with a merit. She is extremely well focused and independent in her learning...she always comes to her lesson having practised!! Also she has performed to the different classes in her school and raised the profile of instrumental playing there as a result."

Why not nominate someone from your school, email David.Francis@northumberland.gov.uk

THE ALNWICK PARTNERSHIP CEILIDH BAND ARE ENTERTAINING VISITORS AT ALNWICK GARDENS

The AlnwiCeilidhans (the Alnwick Partnership Ceilidh Band) performed today at Alnwick Gardens as part of the "What A Wonderful World Festival". Children from Swansfield and Hipsburn Primary schools performed in the Pavillion and did a fantastic job playing alongside Harry Hotspure Primary Schools Ceilidh Band and players from The Border Shetland Fiddlers.

Parents and visitors to Alnwick Gardens had a lovely afternoon. The AlnwiCeilidhans are going from strength to strength.

If you would like to set up a school partnership ensemble please contact mpn@northumberland.gov.uk and we can support you.



ENSEMBLES & WORKSHOPS

mpn@northumberland.gov.uk

<https://music.northumberland.gov.uk>



FREE ENSEMBLE MEMBERSHIP

We are now offering FREE membership for all our county ensembles! This initiative is designed to ensure that every child has the opportunity to progress their musical experiences without the burden of financial constraints. This is a wonderful chance for young musicians to develop their skills, make new friends, and enjoy the joy of making music together.

We encourage you to spread the word to your students and their families! . For more information, including details about the ensembles, rehearsal schedules, and how to sign up, please check out our [full brochure](#). Let's make music together and create lasting memories!

🎧 Watch the [highlights](#) of our summer concert.



SUMMER SCHOOL WORKSHOPS

Once again, we experienced fantastic sign-ups for our two summer school workshops. Both "The Greatest Showman" and "The Little Mermaid" were incredibly popular among students and parents, leading to full bookings well in advance.

Students showcased their talents by singing, dancing, and choreographing, culminating in a grand finale for parents and friends.

🎧 Watch [The Greatest Showman](#)

WHAT'S NEW?

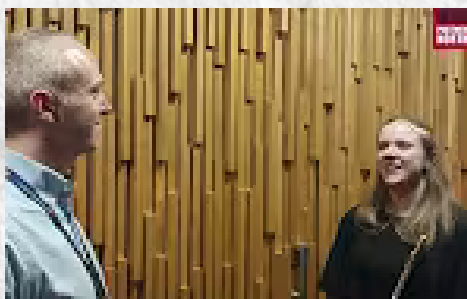
Supported using public funding by



ARTS COUNCIL
ENGLAND

mpn@northumberland.gov.uk

<https://music.northumberland.gov.uk>



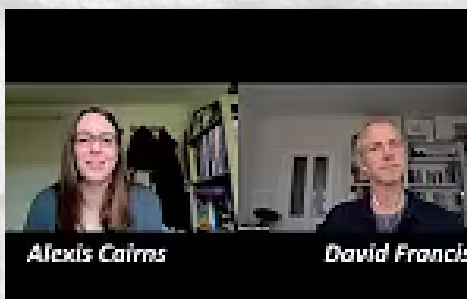
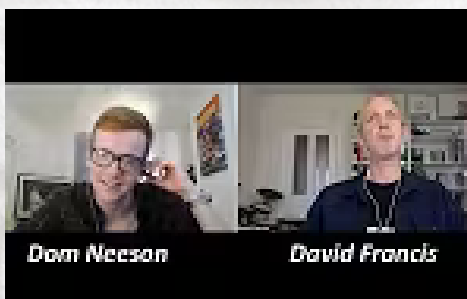
DISCOVER NORTHUMBERLAND'S MUSICAL JOURNEYS WITH PROGRESSION PROFILES

We're excited to introduce Progression Profiles – a captivating series of video interviews that follow the journeys of musicians who started their musical lives right here in Northumberland! Hear from talented individuals now studying, teaching, recording, and performing on some of the world's biggest stages alongside artists like Sam Fender, Everything Everything, and Grace Petrie.

Through these inspiring stories, you'll learn how they got their start, their advice for young musicians, and hear about incredible experiences like performing at Glastonbury and recording at Abbey Road.

Why not share them in your next music lesson with students, these profiles are packed with insights and inspiration. Tune in and discover what it takes to make a life in music!

 [Watch now](#)



TAKE IT AWAY

Take it away is a programme that believes in inspiring and empowering people to make music and achieves these goals by enabling players and performers of any age and ability to own their own instrument – or pay for tuition, equipment and software - with interest free finance. Whatever it is that you need to start making music, or take your music making to the next level, Take it away will help you own it. To find out more about this incredible initiative, [head to the Take it away website.](#)



NEWS

Supported using public funding by



ARTS COUNCIL
ENGLAND

mpn@northumberland.gov.uk

<https://music.northumberland.gov.uk>

INSTRUMENT SALES

As part of reorganising our instrument store, we are selling some equipment at reduced prices to support schools and community groups in their musical efforts. This initiative aims to improve music accessibility for young learners and expand the available instruments in music classrooms.

Interested parties can request a list of available instruments and pricing. Feel free to share this information with any community group or band that may be interested. For our brochure, please email mpn@northumberland.gov.uk.



THE NAME MAY CHANGE...

ACE announced that starting September 2024, there will be 43 Music Hubs instead of 116, aimed at enhancing music education through strategic collaboration over larger areas. This change aligns with approaches used in other initiatives like Teaching School Hubs and Local Enterprise Partnerships. Music Partnership North will now be part of a larger Hub from Durham to Berwick, and plans to change its name to better reflect its service area, with more updates and cross-local authority projects to come.

The rationale for fewer Music Hubs is:

- More and better strategic collaboration across larger areas will improve the quality, breadth, and consistency of music education
- The structural change reflects the approach which other similar initiatives have taken, including Teaching School Hubs, Multi Academy Trusts, Local Enterprise Partnerships, Sport England's Active Partnerships, and some existing Music Education Hubs.



Keep up to date with all our latest information by following us through:



@MPN.Northumberland



@MPN_NLand



For more information relating to any of the above items, visit our website:

<https://music.northumberland.gov.uk> or email mpn@northumberland.gov.uk