



CARE LEAVERS CONNECTED



We hope you have had a positive start to 2024.

We understand that leaving care can be a difficult time with lots of big changes in your life. You may have questions about the support you can get and what services are available. We want to make sure you feel safe and supported and know where to go for advice and help.

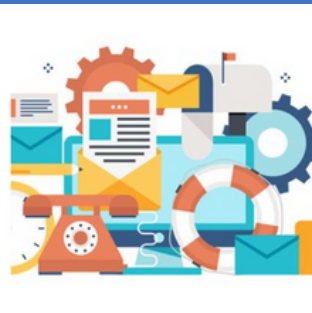
OUR OFFER OF SUPPORT TO YOU (also known as our 'local offer')



Setting Up Home Allowance



Participation in Society



Leaving Care Support Worker

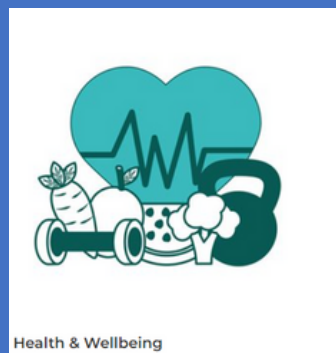


Important Documents

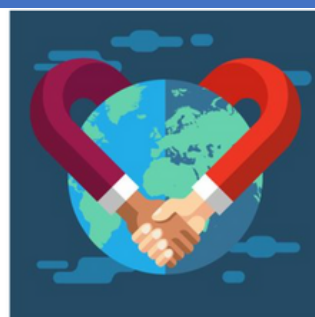
We aim to clearly set out your entitlements as part of our care leavers local offer and what you can expect from us in one place, helping you make the most of the services available to you.



The Care Leaver Local Offer contains information about all the support and services that we have in Northumberland available to you as a care leaver.
Scan the QR code for more info.



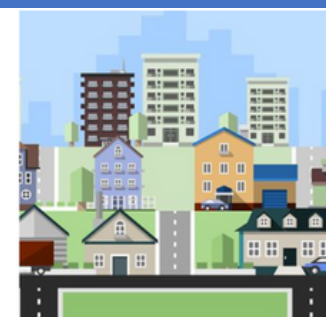
Health & Wellbeing



Relationships



Education, Employment & Training



Accommodation



WINTER 2024

Opportunities & More

The Care Leavers Covenant App and website is a gateway into so many opportunities, offers, discounts and information for care leavers

[HTTPS://MYCOVENANT.ORG.UK/](https://mycovenant.org.uk/)



Care Leavers Bus Pass



We have been working with Nexus to secure free travel for care leavers in Northumberland and have been able to secure travel passes for young people open to the service. If you would like to access a free travel pass for use on buses in the North East and have not had a discussion about this, please speak to your allocated worker, who can make arrangements to submit an application to Nexus on your behalf.



Active Northumberland offer exclusive discounts for Care Leavers

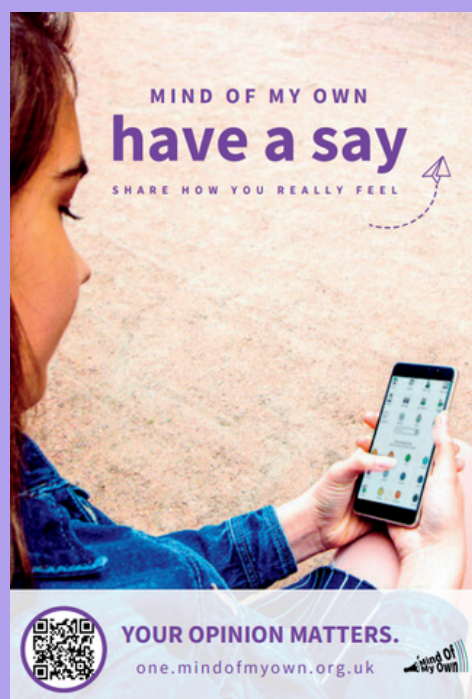
Speak to your worker for more information.

Ages 17 - 25 yrs

- Swimming - Free for child + free for 1 other*
- Fitness Class - 50% off for young person + 25% off for 1 other*
- Gym - 50% off for young person + 25% off for 1 other*
- Clip 'n Climb - 1 free entry every month
- Bowling - 2 x 50% off vouchers every month

HAVE YOUR SAY

Mind Of My Own is a great way to share your views anytime of the day.



YOUR OPINION MATTERS.
one.mindofmyown.org.uk

We would also love to hear your views about the service you're receiving, scan the code to access our feedback form.



Getting Involved

We would love for you to be involved in the creation of our next newsletter - whether you are a keen photographer, writer, graphic designer or just have something to say, please get in touch with us at:

participation@northumberland.gov.uk



WINTER 2024