

# Appendix 1 - Northumberland PREVENT Pathway

**PREVENT** is about working together to safeguard and support people who might be vulnerable to radicalisation.

If a person is being radicalised, their day-to-day behaviour may become increasingly centred around an extremist ideology, group or cause. Some of the signs of radicalisation could be:

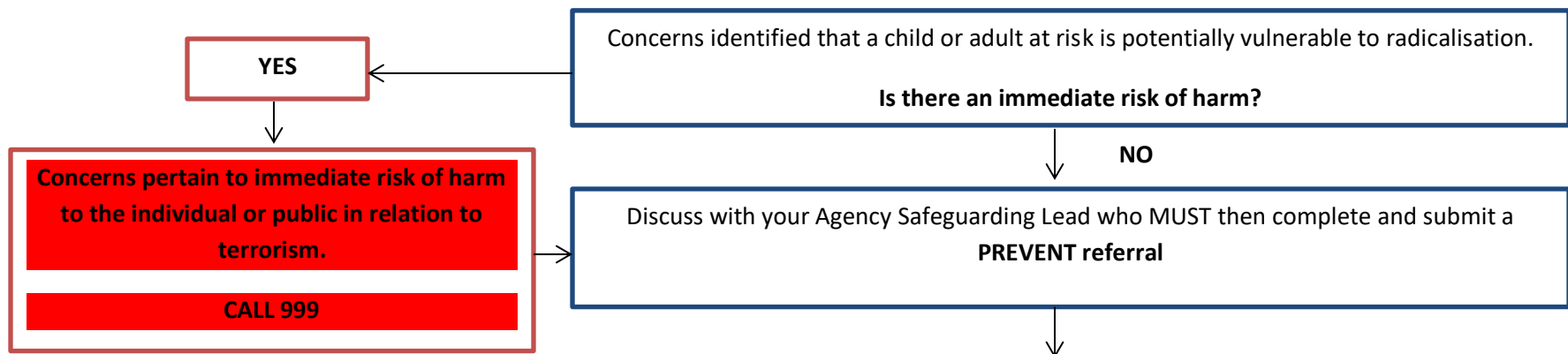
- spend increasing amounts of time talking to people with extreme views (this includes online and offline communication)
- changing their style of dress or personal appearance
- losing interest in friends and activities that are not associated with the extremist ideology, group or cause
- possessing material or symbols associated with an extreme cause
- trying to recruit others to join the cause

## **I'm concerned someone is at risk of radicalisation. What should I do?**

- Report your concerns to the local authority that the person you're worried about lives. You can find the contact numbers and where to get in touch below.
- Remember: PREVENT does not criminalise those who are referred. We aim to safeguard and help those at risk.

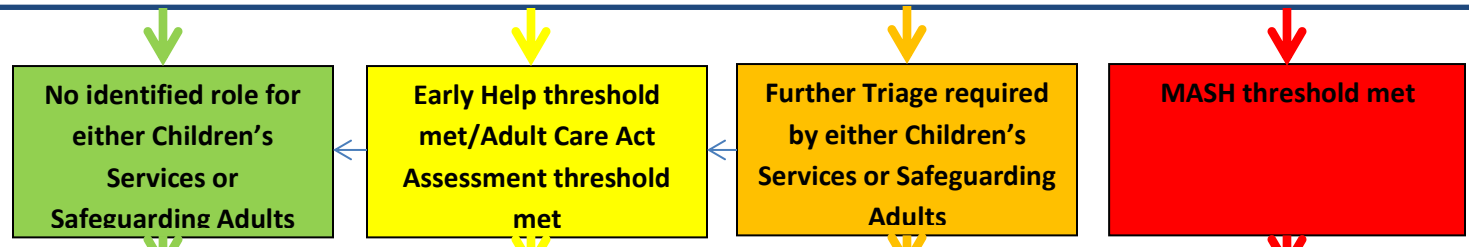
## **Key Contacts**

Emma Beniams	- Senior Community Safety Officer/PREVENT Coordinator <a href="mailto:prevent@northumberland.gov.uk">prevent@northumberland.gov.uk</a>
Adele Wright	- Prevent Lead Children's Services <a href="mailto:Adele.Wright@northumberland.gov.uk">Adele.Wright@northumberland.gov.uk</a>
Karen Wright	- Prevent Lead Adult Services <a href="mailto:Karen.Wright01@northumberland.gov.uk">Karen.Wright01@northumberland.gov.uk</a>
Special Branch	- <a href="mailto:specialbranch@northumbria.pnn.police.uk">specialbranch@northumbria.pnn.police.uk</a>
Onecall	- 01670 536400
Children's Triage	- <a href="mailto:childrentriage@northumberland.gov.uk">childrentriage@northumberland.gov.uk</a>
Adult Triage	- <a href="mailto:safeguarding.triage@northumbria-healthcare.nhs.uk">safeguarding.triage@northumbria-healthcare.nhs.uk</a>
PREVENT referral Form	- <a href="http://www.northumberland.gov.uk">www.northumberland.gov.uk</a>



**Referral received to Prevent Coordinator**

Discussion to take place between PREVENT coordinator, Children's Services Team Manager and Adult Safeguarding Team Manager to establish thresholds, roles and responsibilities



**Prevent Leads and Coordinator Notified by Team Manager of outcome**

PREVENT Coordinator to inform Special Branch and complete agency checks within 10 working days

Prevent Coordinator to liaise with Special Branch to Assess Criteria for Channel Panel

**Potential Outcomes:**  
 Threshold for Channel Panel met  
 VAF prepared by special branch  
 Referrer to attend Channel Panel  
 Case considered at Channel Panel  
**Referrer notified of outcome**

Threshold for Channel Panel not met  
 Signpost to other services  
**Referrer notified of outcome**

Early Help assessment completed and plan implemented  
 Adult Care Plan implemented

Child and Family Assessment or Safeguarding Adult Concerns Notification recorded/safety planning

Child in Need Plan identified

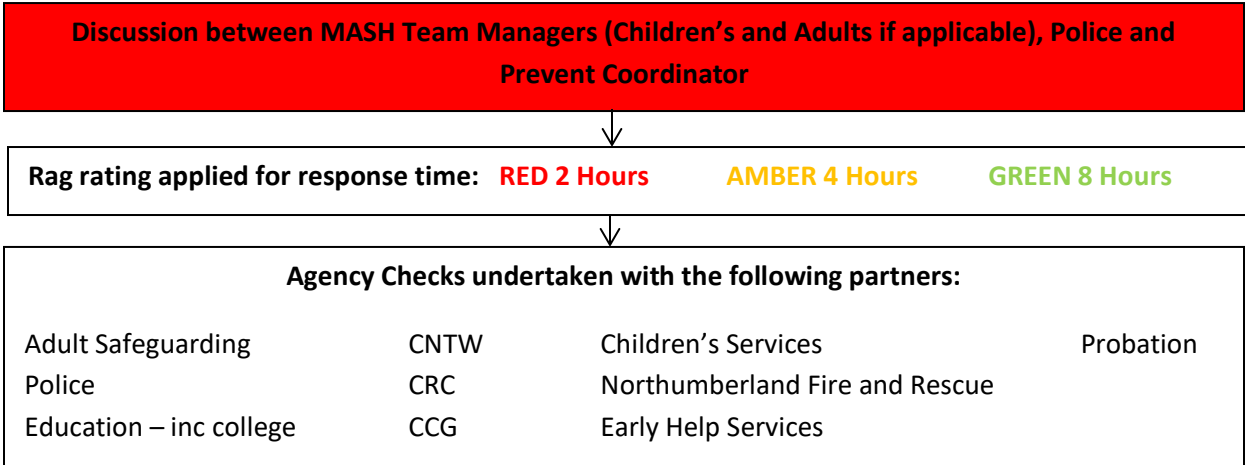
Triage to progress case to MASH manager

Prevent Leads notified case is in MASH

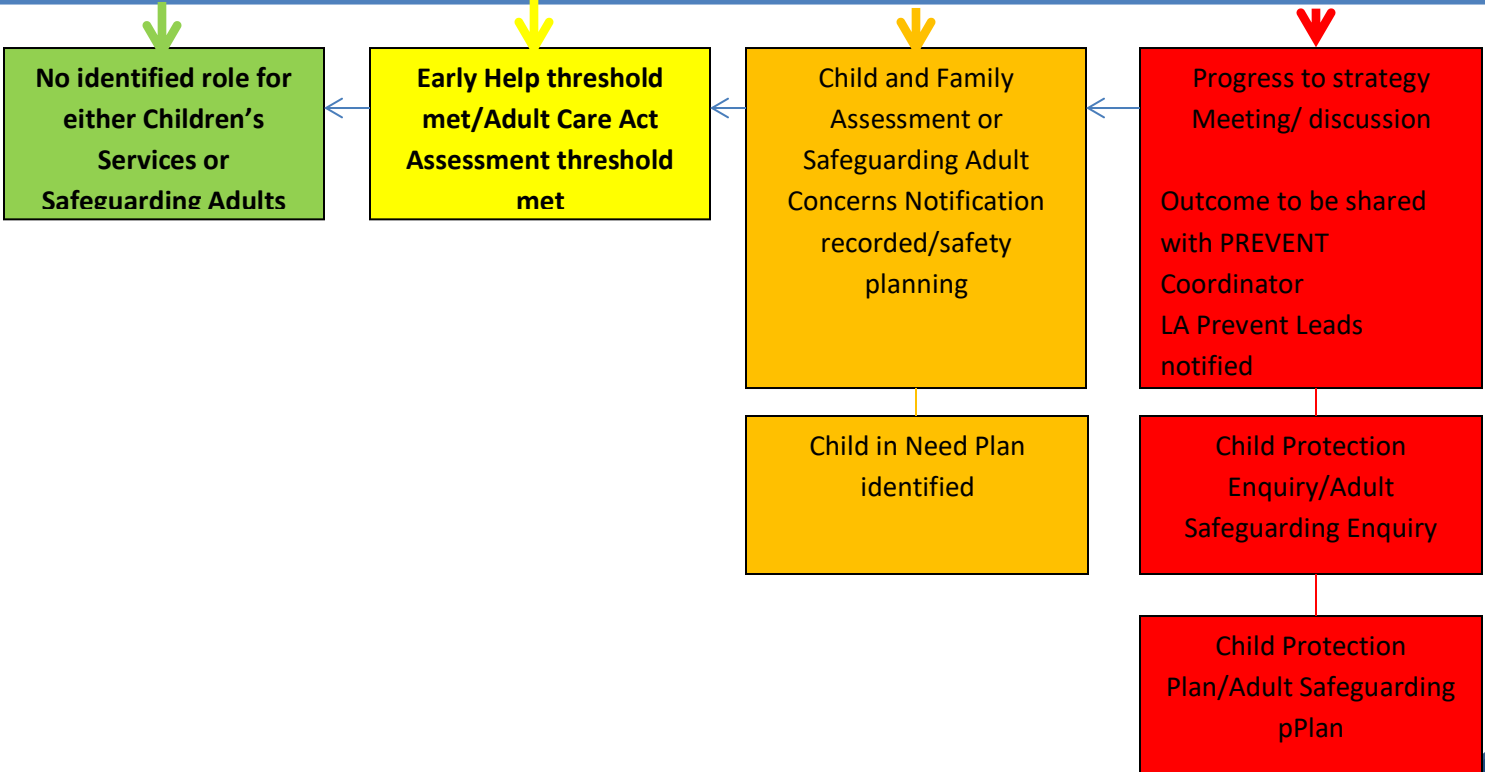
Adele Wright  
 Karen Wright  
 Emma Beniams

**Continue to MASH Pathway**

# MASH PREVENT threshold met



Research received and further discussion with Team Managers, Police and Prevent Lead for Safety Planning and thresholds to be discussed. **MASH episode form sent to PREVENT Coordinator.**



Prevent Coordinator to liaise with Special Branch to Assess Criteria for Channel Panel

**Potential Outcomes:**  
 Threshold for Channel Panel met  
 VAF prepared by special branch  
 Referrer to attend Channel Panel  
 Case considered at Channel Panel  
**Referrer notified of outcome**

Threshold for Channel Panel not met  
 Signpost to other services

**Referrer notified of outcome**