

Psychological Services – Meet the Team



Paula Hesford
NIES Co-Manager



Katinka Bryan
NIES Co-Manager / Senior
Educational Psychologist



Helen Tamworth
Senior Educational
Psychologist



Lance Hardy
Educational Psychologist



Chris Heslop
Educational Psychologist



Maria Martin-McKeever
Educational Psychologist



Hilary Menzies
Educational Psychologist



Gina Seymour
Educational Psychologist



Gillian Shotton
Educational Psychologist

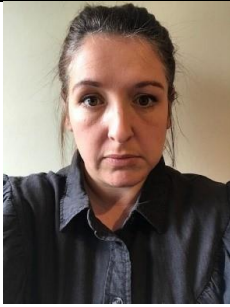


Gill Turner
Educational Psychologist



Scott Morley
Trainee Educational
Psychologist

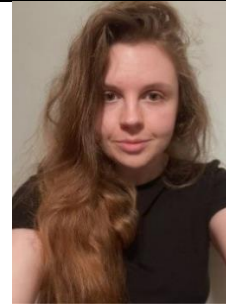
Educational Psychologists (EPs) are registered with the Health and Care Professions Council (HCPC) and have completed a Doctorate or Master's degree in Educational Psychology, and a first degree in Psychology. Before training they worked with children and young people in a variety of roles, including as teachers. The team supports the training of new Educational Psychologists, supervising trainees from University Educational Psychology Doctorate courses.



Emma Holleywell
Senior Mental Health Lead
Coordinator



Vicky Houghton
Assistant Educational
Psychologist



Rebecca Lowes
Assistant Educational
Psychologist

A senior teacher seconded to the Mental Health Support Teams, supporting Senior Mental Health Leads across the county.

Assistant Educational Psychologists support the work of Psychological Services and the Mental Health Support Teams.



Lisa Miller
Office Manager

The Admin Team are experienced business administrators and are knowledgeable of the functions and services offered by Children's Services at Northumberland County Council.



Siobhan Daglish
Admin Assistant



Allison Hall
Admin Assistant



Michelle Thomas
Admin Assistant