

THE FOLLOWING SYSTEM DESIGN SPECIFICATION IS FOR THE INSTALLATION OF A BRAND NEW FIRE ALARM SYSTEM AT THE ABOVE PREMISES.

THE FIRE DETECTION AND FIRE ALARM SYSTEM WILL BE DESIGNED, INSTALLED AND COMMISSIONED IN ACCORDANCE WITH BS5839-1: 2017. (A FULL BAFe CERTIFICATE SHALL BE ISSUED WHEN APPROPRIATE).

DESIGN STATEMENT

THE QUOTATION/ SPECIFICATION FOR THE EQUIPMENT AND INSTALLATION ARE PER THE INFORMATION PROVIDED BY THE CLIENT AT THE TIME OF THE SURVEY TO CATCHPOINT UK LTD. THE SYSTEM WILL BE CONTROLLED BY A BRAND NEW ADDRESSABLE FIRE ALARM PANEL, MANUAL CALL POINTS, AUTOMATIC DETECTION, INTERNAL SOUNDER BEACONS AND VISUAL ALARM DEVICES.

IT SHALL BE THE CLIENTS RESPONSIBILITY TO VERIFY THAT THE FIRE ALARM PROPOSED WITHIN THIS SPECIFICATION MEETS WITH THE REQUIREMENTS OF ANY INTERESTED PARTY, I.E. INSURERS, BUILDING CONTROL OFFICERS, FIRE AND RESCUE SERVICES ETC.

THE SYSTEM IS DESIGNED FOR A CATEGORY L1 TYPE FIRE DETECTION AND FIRE ALARM SYSTEM

FIRE CABLE
ALL NEW CABLING FOR THE FIRE ALARM SYSTEM WILL BE 2 CORE 1.5MM STANDARD RATED FIRE CABLE.

VARIATIONS FROM DESIGN

INTRUDER ALARM SIGNALLING DEVICE LINKED TO FIRE ALARM

STANDARD BATTERY PERIOD

THE SYSTEM SHALL BE PROVIDED WITH BATTERIES TO POWER THE SYSTEM FOR A MINIMUM OF 24 HOURS IN STANDBY AND ADDITIONAL 30 MINUTES IN ALARM.

DESIGN DRAWING

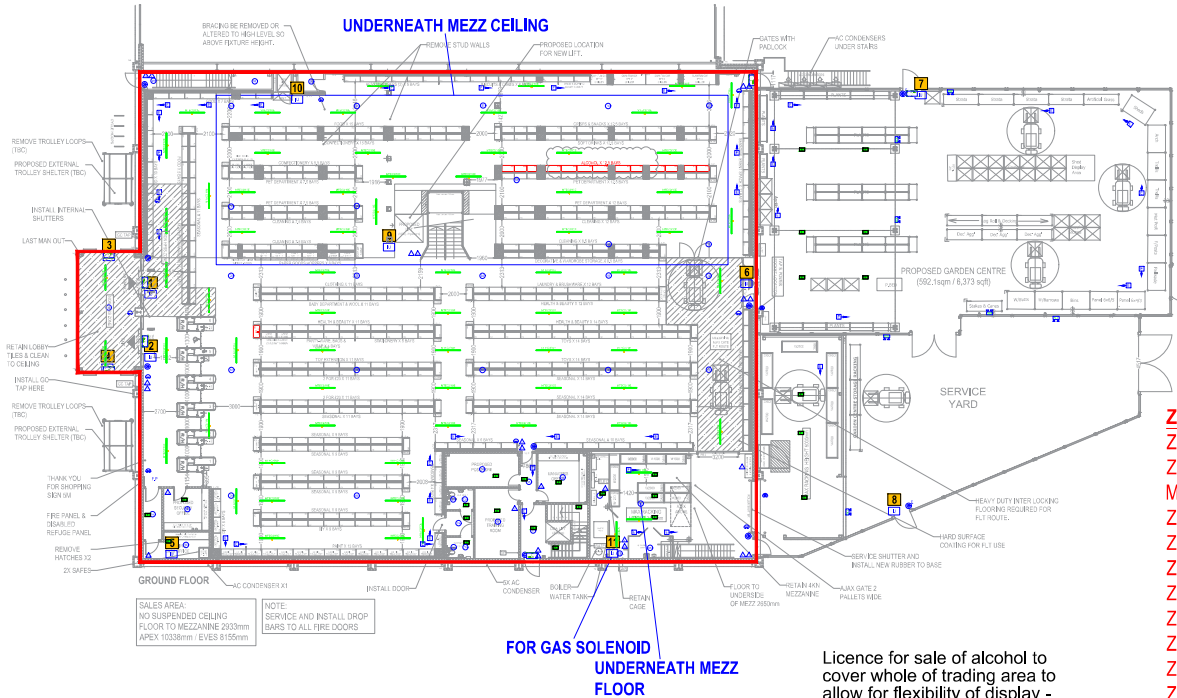
THE SYSTEM SHALL BE INSTALLED IN ACCORDANCE WITH THE ATTACHED DRAWING
NUMBER: 34990 REVISION: 01 DATED: 07/03/2024

CONTROL EQUIPMENT

A 230 VOLT MAIN SUPPLY FOR THE FIRE ALARM IS TO BE SUPPLIED BY OTHERS, IN SOFT SKIN STANDARD FIRE CABLE.

LIST OF EQUIPMENT

- 1 X 2 LOOP ADDRESSABLE FIRE ALARM PANEL C/W 2 LOOP CARDS
- 62 X OPTICAL SMOKE DETECTORS
- 1 X HEAT DETECTOR
- 39 X INTEGRATED SOUNDER BASES
- 24 X STANDARD BASSES
- 2 X BATTERIES
- 4 X CEILING MOUNTED VAD C-3-8 RED BODY RED LENS
- 9 X ADDRESSABLE SOUNDER BEACONS
- 1 X CONVENTIONAL SOUNDER BEACON
- 13 X MANUAL CALL POINTS
- 2 X EXTERNAL IP RATED SOUNDER BEACONS
- 2 X EXTERNAL MANUAL CALL POINTS
- 12 X INTERFACES

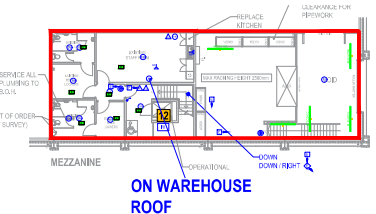
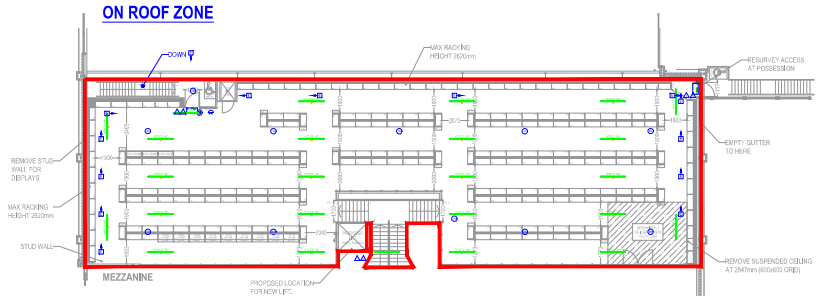


EMERGENCY LIGHTING KEY

- MTEC 2110 E - 42188818
- EMERGENCY LIGHT SWITCH
- LED 3W TWIN SPOT EMERGENCY FLOOD LIGHT
- MAINTAINED EMERGENCY EXIT SIGN
- NON MAINTAINED EMERGENCY BULKHEAD

- ZONE LIST:**
- ZONE 1 - MAIN SALES FLOOR
 - ZONE 2 - SALES FLOOR UNDERNEATH MEZZ LHS
 - ZONE 3 - CASH OFFICE + SECURITY OFFICE
 - ZONE 4 - ENTRANCE LOBBY
 - ZONE 5 - AMENITY BLOCK GROUND FLOOR
 - ZONE 6 - AMENITY BLOCK STAIRWELL
 - ZONE 7 - GROUND FLOOR WAREHOUSE
 - ZONE 8 - WAREHOUSE MEZZANINE FLOOR
 - ZONE 9 - MEZZANINE AMENITY BLOCK
 - ZONE 10 - MEZZANINE SALES FLOOR
 - ZONE 11 - STAIRWELL (FLHC)
 - ZONE 12 - GARDEN CENTRE
 - ZONE 13 - SERVICE YARD

Licence for sale of alcohol to cover whole of trading area to allow for flexibility of display - Alcohol display will be less than 10% of trading area.



FIRE DETAIL KEY

F.P.	ADDRESSABLE FIRE PANEL
F.R.P.	FIRE PANEL REPEATER
□	DIRECTIONAL FIRE EXIT
□	ILLUMINATED FIRE ESCAPE SIGN
●	EMERGENCY LIGHTING
●	MANUAL CALL POINT WITH SQ
●	EXTERNAL MANUAL CALL POINT WITH SQ
●	WALL MOUNTED SOUNDER VID
●	WALL MOUNTED EXTERNAL SOUNDER VID
●	WALL MOUNTED CONVENTIONAL SOUNDER VID
●	DETECTOR HEAT
●	DETECTOR HEAT & SOUNDER BASE WITH SQ
●	DETECTOR SMOKE IN ROOF
●	DETECTOR SMOKE & SOUNDER BASE WITH SQ
●	DETECTOR SMOKE & VAD BASE WITH SQ
●	SOUNDER / HEAT
●	SPRINKLER HEAD
△	FOAM FIRE EXTINGUISHER
△	AQUA FIRE EXTINGUISHER
△	UPHOLSTERY FIRE EXTINGUISHER
△	CO2 FIRE EXTINGUISHER
△	IRAIN TO RAIN DETECTOR
△	FIRE BLANKET
△	CEILING MOUNTED VAD (NO SOUNDER) (C-3-8)
△	INDICATOR
□	INPUT OUTPUT UNIT
□	INTERFACE AUTOMATIC DOORS
□	INTERFACE SPRINKLER SYSTEM
□	ENDING BEAM
□	FOAM EXTINGUISHERS RATED AT 21KG


AREA APPROVED FOR THE SALE/STORAGE OF ALCOHOL

No.	Interface List:	Input / Output
1	Main Entrance Lobby Auto Door	Output
2	Main Exit Lobby Auto Door	Output
3	Main Entrance Auto Door	Output
4	Main Exit Auto Door	Output
5	Monitoring (Cash Office)	Output
6	Garden Centre Auto Door	Output
7	Garden Centre Fire Exit Gate	Output
8	Service Yard Fire Exit Gate	Output
9	Passenger Lift	Output
10	DDA Lift 1	Input
11	Gas Shutdown (Gas Solenoid)	Output
12	DDA Lift 2	Output

PLEASE NOTE:
All auto doors Interfaces must be no more than 1M away from the door

PLEASE NOTE:
SYSTEM TO BE MONITORED

FIRE EXIT PROVISIONS - RETAIL UNIT		5.0 mm	
EXIT WIDTHS / PERSONS		18 m	
MAX. SINGLE DIRECTIONAL TRAVEL DISTANCE		45 m	
MAX. TWO-DIRECTIONAL TRAVEL DISTANCE		2 m2/PERSONS	
OCCUPANCY			
		Sales Areas	
		Ground Floor	First Floor
COMPARTMENT AREA (m2)	1,648.1	650.7	
OCCUPANCY (PERSONS)	825	326	
REQUIRED OPENING (mm)	4,125	1,630	
TOTAL PEOPLE X 5mm PER PERSON EXIT WIDTH)			
FIRE EXIT WIDTHS (mm)			
MAIN ENTRANCE/EXIT	1,908	0	
MAIN EXIT (IF APPLICABLE)	1,908	0	
GRP W/H DOORS (IF APPLICABLE)	0	0	
GARDEN CENTRE DOORS (IF APPLICABLE)	1,908	0	
F/E 1	1,117	1,700	
F/E 2	3,200	1,700	
F/E 3	786	1,130	
F/E 4	0	1,117	
F/E 5	0	0	
TOTAL CLEAR OPENING FROM COMPARTMENT FLOOR AREA (mm)	10,827	5,647	
EXCLUDE LARGEST OPENING (mm)	3,200	1,700	
FINAL CLEAR OPENING (mm)	7,627	3,947	

 <small>DO NOT SCALE - USE DIMENSIONS ONLY ALL DIMENSIONS GIVEN IN METERS UNLESS SPECIFICALLY STATED OTHERWISE THE INFORMATION CONTAINED HEREIN IS FOR YOUR INFORMATION ONLY. IT DOES NOT CONSTITUTE A CONTRACT. THE CONTRACT IS THE AGREEMENT BETWEEN YOU AND THE ARCHITECT.</small>	TYNE VALLEY (HEXHAM)		TITLE: PROPOSED FIRE LAYOUT GROUND FLOOR & MEZZANINE				SALES AREA		1,646.7 sqm (17,651 sqft)		REVISIONS		NO OF PAGES	
	SITE ADDRESS: (FORMER HOMESIDE) UNIT 1 TYNE VALLEY RETAIL PARK STATION ROAD HEXHAM NENDAM		CLIENT: B&M RETAIL LTD.				WAREHOUSE		84.2 sqm (904 sqft)		TOTAL BAYS		26	
	LAYOUT: BP		FLOOR: 2				AVENUES		907 sqm (9,781 sqft)		TOTAL BAYS		26	
	DRAWN BY: BM-B99-0406		SCALE: 1:200@A1				GARDEN CENTRE		592.1 sqm (6,373 sqft)		TOTAL BAYS		766	
	DATE: 31.03.25		REVISION: -				TOTAL GROSS		3,215.5 sqm		TOTAL BAYS		821	
			REV DATE DESCRIPTION				TOTAL NET		3,061.1 sqm		TOTAL BAYS		821	
							TOTAL BAYS		766		TOTAL BAYS		821	
							TOTAL BAYS		766		TOTAL BAYS		821	
							TOTAL BAYS		766		TOTAL BAYS		821	
							TOTAL BAYS		766		TOTAL BAYS		821	