

Northumberland
County Council
2017-21

Delivering the Corporate Plan

Executive Director of Children's Services

March 2018



Northumberland
Northumberland County Council

Executive Overview

Services within the Directorate

Children's Services is the term used to describe the combination of education provision and children's social care working together within one directorate in each local authority with a Director of Children's Services responsible for the education, safety and well-being of all children in a council's area.

Within Northumberland this covers

Children's Social Care	
Social Work	Services for Looked after children
Northumberland Adolescent Service	Safeguarding Standards Unit
Early intervention and prevention	Authority-wide lead on: <ul style="list-style-type: none"> • Tackling poverty • Domestic abuse service co-ordination • Supporting ('Troubled') Families • Child sexual exploitation • Local Safeguarding Children Board
Education and Skills	
Early years and primary school improvement	Secondary school improvement
Virtual School for Looked after children and alternative provision	Special educational needs assessment, planning and support services
School organisation and planning	Employability and Skills

Summary of Resources

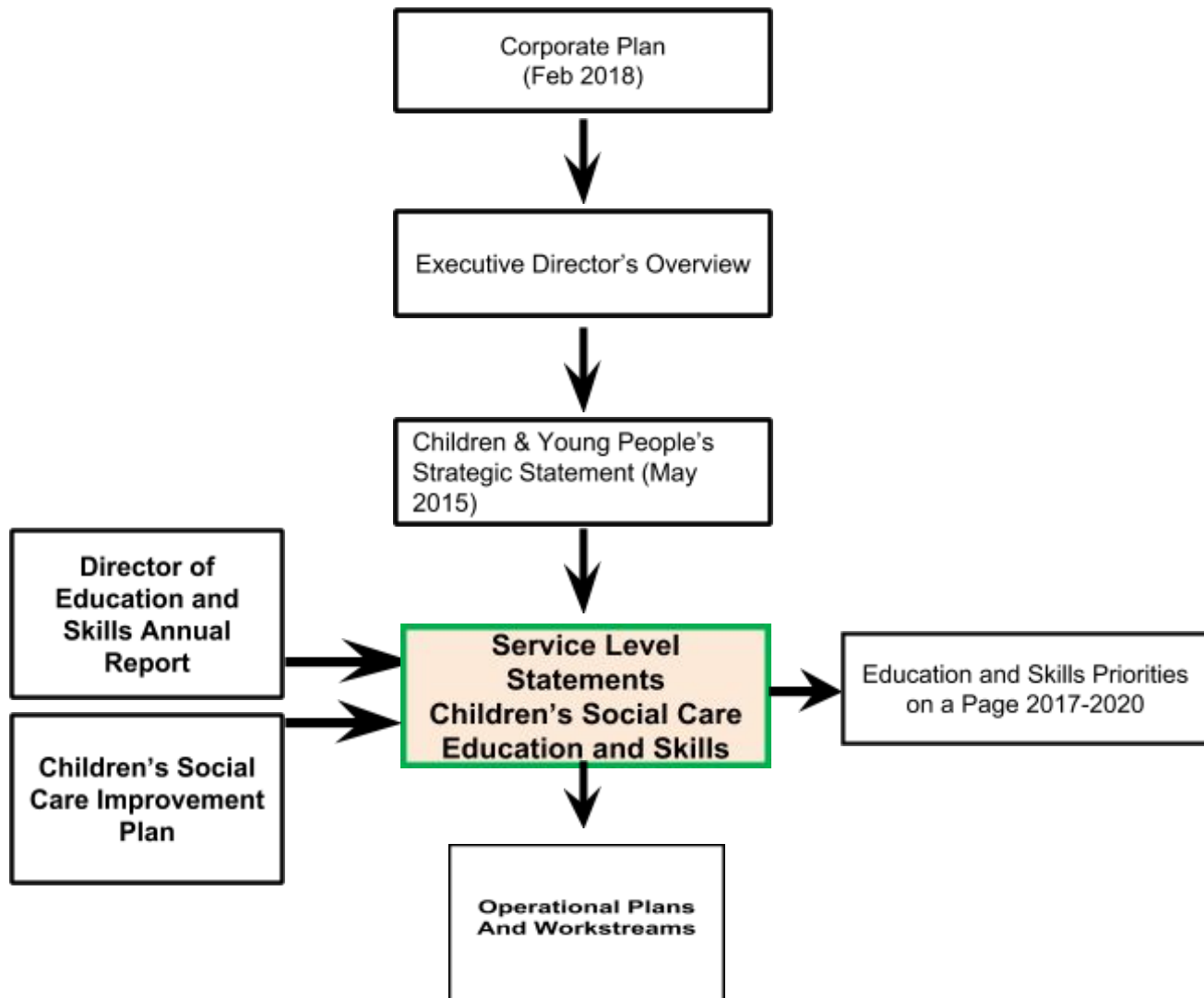
Children's Social Care

Number of FTE posts	Staffing Expenditure	Non Staffing Expenditure	Income	Capital Investment
660.93	24,701,817	22,130,847	-7,949,765	689,474

Education and Skills

Service	Number of FTE posts	Staffing Expenditure	Non Staffing Expenditure	Income	Capital Investment
Total for Service	334.8	£129,513,580	£87,376,406	-£206,970,436	£59,162,025
Dedicated Schools Grant (DSG)	139.93	£8,230,220	£39,430,040	-£159,926,830	-
Non-DSG	85.37	£8,603,560	£7,846,700	-£7,095,630	-
Schools	n/a	£109,185,250	£38,894,950	-£35,813,630	-
Learning and Skills Service	109.5	£3,494,550	£1,204,716	-£4,13,346	-

Planning Framework



Role of the Directorate in delivering the Corporate Plan

Children's services are committed to ensuring that the Corporate Plan is the focus of all plans and the values are adhered to accordingly. Although all the values are important, of particular relevance to Children's services are:

- **ensuring our services are customer focused** (the theme of improving the culture within the workforce and putting the customers or clients at the centre of what we do is one of the 3 key focus areas in the Children's Social Care Improvement Plan).
- **supporting communities to feel safe:** children's safety and promotion of their well being is at the heart of all social care services and schools across the county.

There are 2 key priorities that relate directly to children:

‘We want you to achieve and realise your potential’ (learning)

There has been some substantial investment in relation to education within Northumberland in the last few years and there are a number of changes and consultations taking place in order to improve the educational outcomes across the whole of the county. The directorate is working closely with schools and colleges to ensure that the standard of education provided is the best it can be and that schools are aspirational for all children and young people.

There are some significant challenges in relation to the organisation of schools and access to high quality further education provision and the directorate, with the support of elected members, is helping to shape education provision for the future.

The priorities outlined in the Service Statements for 2018/19 are focused on the priority of ensuring children get the best education which will prepare those approaching adulthood.

Although children and young people are not specifically identified within the other priorities it is clear that with regards to social care issues, the most relevant priority is

‘We want you to feel safe, healthy and cared for’ (living)

This is, in fact the whole premise of children’s social care provision and all the associated plans are focused around this priority area. Our aim is to ensure that children and families receive the right help at the right time and from the right service. Our focus on early help and support is essential in terms of this as we want children and their families to receive targeted help before there is an escalation and the need for statutory intervention.

Where children need statutory and formal intervention our aim is to provide effective social work support so that children are safeguarded and protected and where it is identified that they are no longer able to live with their birth families, there are appropriate and high quality placements available to provide safe and nurturing care.

Improved outcomes

Children’s services are about changing lives and making a difference . We want every child in Northumberland, whatever their age, whatever their background, whatever their ethnicity or gender to have the opportunity to fulfill their potential.

The areas where we most want to improve outcomes are:

- Educational attainment: ensuring that all our children achieve to the best of their ability

- Raising aspirations and improving social mobility
- Investing in apprenticeships
- Providing the right support for those children with special and additional educational needs
- Targeting support for children and families so that they receive early help
- Where children need help and protection or where children can no longer live at home making sure they are safeguarded and their well being is promoted.