

Northumberland news

Spring 2019



Investing in our county

Discover our Land

Your Mayor, Your Vote

What's On?



Northumberland
County Council

www.northumberland.gov.uk

**COULD YOU
HELP THEM
STAY TOGETHER?**

“You get so much joy from keeping brothers and sisters together. They are happier and more secure knowing they will be with us until they fly the nest. **”**

Sheila,
North Northumberland



SUPPORTING YOU EVERY STEP OF THE WAY

FOSTER WITH US

Visit www.northumberland.gov.uk/foster

Talk to Caroline: 01670 62 62 62

Email: foster@northumberland.gov.uk



Northumberland
County Council

**Pop in to meet us - Find out more about fostering
New monthly drop ins from 2nd April
See website for details**

INSIDE *this issue*



Available online, by email or in print.

Northumberland News is a magazine packed with features and news articles written specifically for county residents.

Published quarterly, it is distributed free of charge by Northumberland County Council. Every effort is made to ensure that all information is accurate at the time of publication.

If you would like to receive Northumberland News in large print, Braille, audio, or in another format or language please contact us.

Telephone: 0345 600 6400

Type Talk: 18001 0345 600 6400

FOLLOW US:



FACEBOOK AT:

www.facebook.com/NorthumberlandCC



TWITTER AT:

twitter.com/N_LandCouncil



YOUTUBE AT:

www.youtube.com/NorthumberlandTV

- 4 A journey of Discovery**
- 6 Investing in a brighter future for Northumberland**
- 8 Your North of Tyne, Your Mayor, Your Vote**
- 10 Investing in education for all**
- 12 Make a swap for your next shop**
- 14 Can your child swim?**
- 15 Time to get active**
- 16 Show the love for where you live**
- 18 Could you be a retained firefighter?**
- 20 Universal Credit**
- 22 What's On**

FRONT COVER

Photo: Liz King, Skipper of The Williams II and Clive Gray, Chief Executive of Blyth Tall Ship

Come with us on **A JOURNEY OF DISCOVERY**

An exciting new campaign called Discover our Land has been launched by the council to promote Northumberland as a great place to live, work, visit and invest.

The campaign, which was launched to business leaders in January, will build a community of people to champion everything that is great about the county.

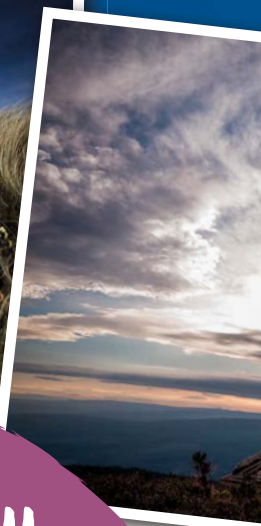
Discover our Land will shine a light on the county as somewhere to visit, to raise a family, to build a career and to establish, invest and grow a business.

It has been backed by businesses big and small including Hepple Gin, Tharsus, DeepOcean and Northern Wilds.

Campaign stars feature in a series of videos including Blyth Tall Ship, Kielder Dark Sky Park, Newcastle International Airport and The Old Boat House Group. A dedicated Discover our Land website, www.discoverourland.co.uk will act as a shopfront to all that's great about Northumberland, and be the content hub for the digital-led campaign that will be run across social media, and national and regional online media channels.

This exciting new campaign will issue a rallying cry to inspire people to be part of Northumberland's story, as told by the people who know it best - those that are proud to live, work, visit or invest here.

Since the launch, the campaign has been inundated with support from businesses and residents across the county, with over 600,000 people seeing the campaign on social media and more than 200 signing up for more information via the website.



*We want
to hear from you!!*

If you think you or someone you know would make a great ambassador for Northumberland then we want to hear from you! We want you to tell us who you are, what you do, and why you are proud that you do it in Northumberland - be that to live, work, visit or invest here.

Share your stories on our social media pages or sign up to become a campaign ambassador via www.discoverourland.co.uk

Together we will shout loudly and proudly about what makes Northumberland great.

*discover
our Land*



SETTING SAIL ON A JOURNEY OF DISCOVERY

Discover our Land Ad-Star Blyth Tall Ship set sail on an epic journey in a 100-year-old ship around the British Isles in March.

Stopping at 10 ports along the way, before returning to Blyth on 1st June, the voyage is part of The Williams Expedition, which aims to recreate the discovery of Antarctica made 200 years ago by Captain William Smith, of Seaton Sluice.

On board is a crew of volunteers recruited from the all corners of the county and from all walks of life.

The former Danish ship has been restored by local volunteers and apprentices and The Williams II, is now very similar to the original and ready for the journey.

In total 120 people will take part in the voyage with each crew member doing approximately six days at sea.

A group of experienced crew members, who have been trained up by the project, will be there to help the more inexperienced and show them all the skills needed to safely navigate the ship back to Northumberland.

The project is still hoping to make the trip to Antarctica, as well as a shorter trip to the Arctic and funding is still being sought.

Anyone who is interested should contact Clive Gray - clive@blythtallship.co.uk



discover our Land

DISCOVER OUR LAND TAKES TO THE ROAD

The campaign has taken to the road to spread the message far and wide and gain further support.

Throughout March a series of Discover our Land roadshows are being held to engage with businesses and stakeholders.

INVESTING IN A BRIGHTER FUTURE FOR NORTHUMBERLAND

Schemes to boost the county's economy, improve education prospects for all and create new infrastructure for the future are among ambitious plans in Northumberland County Council's budget.

The biggest ever capital programme of investment of £604m will be spent in the county over the next three years, aiming to provide a bright future for everyone in Northumberland.

Council Leader Peter Jackson said:

"We've always had bold plans, and this budget will help support a thriving local economy and deliver value for money for all the communities we serve.

"We're already making huge strides in terms of improving education standards, attracting new investment and delivering on an ambitious North of Tyne devolution deal and this progress will continue.

"We're making good progress against the very difficult financial position we inherited while still delivering the most ambitious capital programme the county has ever seen. We feel these budget proposals strike a fine balance of spend and save.

"We're committed to our promises of investing in Northumberland's future and delivering the very best services for everyone who calls the county their home."

A snapshot of how some of the £604m is to be spent:

- £157m on our schools
- £60m on regeneration projects
- £44m on improving leisure
- £43m on housing.
- £22.5m on new council housing

SAVINGS

The council has to find an additional £36m over the next three years to balance its budget.

To protect vital services which are subject to increasing demand, the council is increasing Council Tax by 2.99%.



The Budget

will help to deliver



Improved leisure facilities including new sports centres in Berwick, Morpeth and Ponteland



An ambitious new council housing programme and improvements to existing council housing



Investment in schools including Amble, Berwick, Haltwhistle, Hexham, Morpeth, Ponteland and Seaton Valley



Improvements of roads, bridges and footpaths



Major town centre regeneration schemes in Ashington, Blyth, Berwick and Bedlington



The creation of hundreds of extra car parking spaces



Improved street cleaning and rubbish and recycling collection



The progression of the new Northumberland Rail Line



Continued rollout of high-speed broadband across the county



The promoting of Northumberland as a destination for tourism and business



Investment in extra care facilities and supported housing



Flood and coastal erosion protection schemes



Joined up health and social care

The creation of hundreds of jobs through initiatives such as

A new Enterprise Zone in East Sleekburn

Opportunities created by the North of Tyne devolution deal and the proposed cross-county Borderlands initiative

Progress on the new Northumberland Line which would link south east Northumberland to Newcastle city centre.

Your NORTH OF TYNE, Your MAYOR, Your VOTE

November 1, 2018 was an historic day for the people of Northumberland, Newcastle and North Tyneside.



That was when the North of Tyne Combined Authority was formally brought into law by Parliament.

It meant a £600m deal – to transfer powers and investment from Central Government to the three North of Tyne authorities. That's £20m a year for the next 30 years for new training, jobs and education opportunities, new homes that families need and a growing local economy where everyone feels the benefit.

Over the course of the deal the North of Tyne Combined Authority aims to create 10,000 jobs and bring a £1.1 billion boost to the local economy.

USE YOUR VOTE ON MAY 2

Having a North of Tyne Elected Mayor is part of the deal. Without a North of Tyne Elected Mayor there is no funding.

And on May 2 you get to have your say on who becomes the first one.

It's a big decision and a big job. The North of Tyne Elected Mayor will represent everyone in Newcastle, North Tyneside and Northumberland for the next five years.

They will champion the North of Tyne nationally and internationally.

They will ensure our voice is clearly heard in Government.

They'll work alongside Newcastle, North Tyneside and Northumberland councils to decide how and where we spend our money.

That's why your vote is important. You'll be seeing and hearing lots about the forthcoming North of Tyne Mayoral elections over the next few weeks as well as getting information through your door.


If you're registered to vote in Northumberland you don't need to do anything - we'll be in touch.

If you're not already registered you can do so by going to www.gov.uk/register-to-vote.

You can find out more about the NTCA and the election on their website - www.northoftyne-ca.gov.uk

You can also follow them on:

 Twitter @NorthofTyneCA

 Facebook
@NorthofTyneCA



HOW TO VOTE

If you are eligible to vote, make sure you go along and use it - it really can make a difference.

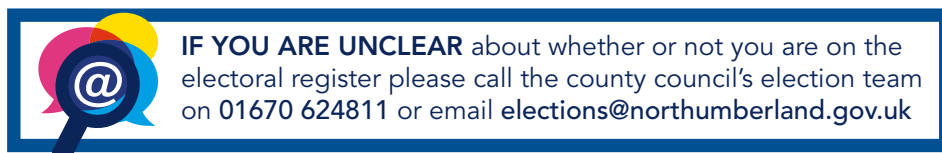
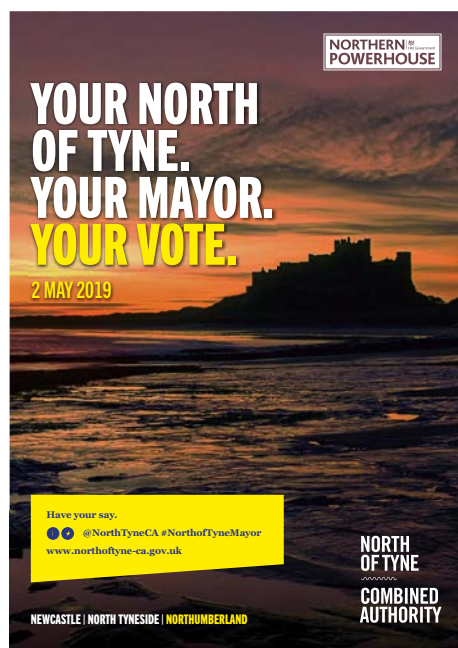
If you are registered to vote, you will receive a polling card through the door during April which will tell you whether you have a postal or a proxy vote in place, or which polling station you must visit to cast your vote.

Polling stations will be open from 7am to 10pm on Thursday May 2 at 222 community venues across the county.

If you want to apply to vote by post, or by proxy there are deadlines you need to adhere to. For a new postal vote you will need to complete and return your application form by 5pm on Monday 15 April 2019. For a proxy vote (where you get someone to vote on your behalf) this deadline is 5pm on 24 April 2019.

You can download these application forms from the website:

www.yourvotematters.co.uk, or alternately you can contact the council's electoral services team to request an application form by ringing 01670 624811.



Celebrating gender equality on INTERNATIONAL WOMEN'S DAY

We marked International Women's Day this year by celebrating gender-equality in the workplace.



Short videos on the council's social media channels have shown front-line and senior staff across a range of services talking about challenges women face in the workplace and the work Northumberland County Council has undertaken to overcome these.

Vicki Atkinson, Assistant Customer Information Centre Manager

"As a woman in any workplace, the greatest challenge is balancing your job with your family life. The new ways of agile working have really helped make that balance easier to succeed."



Victoria Redhead, Firefighter for Northumberland Fire and Rescue Service

"Northumberland is very active in striving for gender equality within Fire and Rescue. Anybody can be a firefighter, regardless of their gender, ethnicity, religion or sexual orientation."



Shannon Johnson, Level 4 Business Administration Apprentice in the Digital Team

"There are not a lot of women working in STEM industries, and we're trying to bridge the gap by promoting STEM subjects in schools."



WE'RE LEADING THE WAY...

It was announced in April 2018 that Northumberland County Council was the local authority in the North East with the smallest gender pay gap of only 0.5%.

CHECK OUT OUR CAMPAIGN ON
[youtube.com/northumberlandtv](https://www.youtube.com/northumberlandtv)

Final stages before Northumberland adopts its Local Plan



This May, a full Local Plan for Northumberland will be submitted to Government for examination by an independent planning inspector.

The plan will shape the future of the county up to 2036 and includes all of the main planning policies for Northumberland. The plan which shows where new homes will be built, new jobs created and new services provided, aims to grow and diversify the economy of Northumberland, identifying measures to enable 15,000 new jobs to be created. It also aims to protect the Green Belt from new development and preserve the special qualities of Northumberland.

The council consulted widely on a 'publication draft' plan earlier this year at 23 drop in events.

The independent planning inspector will ensure the plan has been prepared using robust and credible evidence and has properly assessed the need for homes, jobs and infrastructure.

Examination hearings are scheduled to take place this September and at that time interested parties will be able to make representations to the planning inspector.



YOU CAN FIND OUT MORE
at www.northumberland.gov.uk/localplan

INVESTING IN EDUCATION FOR ALL

MORE SPECIAL SCHOOL PLACES

Over £3m has been invested in Northumberland to increase the number of school places for children with special educational needs, demonstrating the council's wider commitment to providing for children who need extra support.

HEXHAM

Over 30 additional places have been created through an extension to Hexham Priory School which has provided three additional classrooms and associated ancillary space which will allow a high level of educational provision locally for children with complex needs.

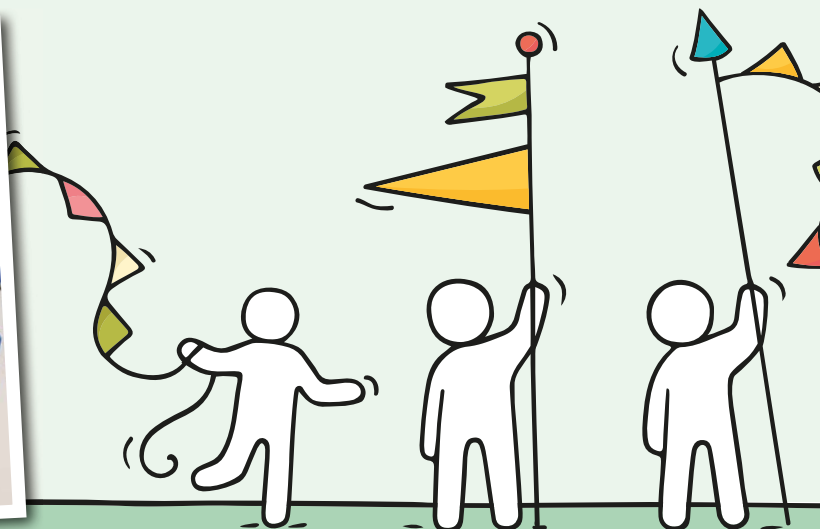
The county council funded the £1million extension to the school which provides support to children with severe learning difficulties and complex learning needs.

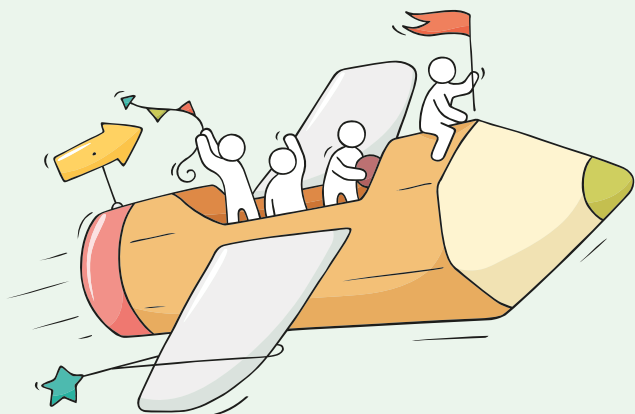
ASHINGTON

In Ashington the council has renovated an old annex building of the high school to provide 50 SEN places in the new 'Ashdale' - a satellite unit of the Dales Special School at Blyth.

Nearly £2m has been invested in the sensitive renovation of a 1940s building to provide new classrooms, specialist sensory rooms, space for play and recreation and outdoor play spaces. Many of the original features of the building have been retained and the rooms are light and bright.

The Dales School caters for children from two to 11 who have identified needs related to autistic spectrum condition; social emotional and mental health needs; and speech, language and communication difficulties.





**THE COUNCIL HAS
ALLOCATED FUNDING
TO ALLOW THE
CONSTRUCTION OF NEW
SCHOOLS AT SEATON
DELAVAL, HEXHAM,
& BERWICK**

MULTI-MILLION POUND INVESTMENTS IN NEW SCHOOLS ACROSS NORTHUMBERLAND

As part of its financial plans for the next three years, the council has allocated funding to allow the construction of new schools at Seaton Delaval, Hexham and Berwick, as well as a multi-million investment at James Calvert Spence College in Amble.

SEATON VALLEY

£21m has been allocated for new school buildings which will become part of the Seaton Valley Federation of Schools. Science laboratories, art and design studios and sports facilities with ICT integrated throughout will aid teaching and learning there.

HEXHAM

At Hexham, a £37.1m development will see both a new high school and a new middle school built on the current Queen Elizabeth High School site. The council has been working with Hadrian Learning Trust to develop a proposal to replace the current ageing and increasingly unsuitable school buildings.

HALTWHISTLE

The Council will also invest up to £2.5m in renovating buildings to accommodate Haltwhistle Primary School.

BERWICK

The council has allocated at least £15m for a new school in its northernmost town - to replace the ageing Berwick Academy buildings. Many of the buildings date back to the 1950s and have been the subject of concern due to the progressing dilapidation of the site as well as the layout of the buildings, which are spread across a large area.

AMBLE

At James Calvert Spence College in Amble, the council is working with school representatives to develop a business case for a school that is truly fit for purpose. The town is growing, having seen over 2,000 new houses approved in recent years, and it needs a school fit for the 21st century.

The plans are all part of Northumberland County Council's largest ever programme of investment, with £604m proposed over the next three years to boost the county's economy, improve education prospects for all and create a new infrastructure for the future.

PROGRESS UPDATES: MORPETH

The new £6.8m Morpeth First School, to replace the ageing Goosehill school buildings, is well underway, and on schedule to be complete and open by September 2019.



PONTELAND

Work is underway on the landmark £46m combined schools and leisure campus in Ponteland. The existing leisure centre will be demolished after the construction of two new schools and a leisure centre with swimming pool, fitness site, sports hall, Clip-N-Climb, soft play and outdoor sports facilities. The development is scheduled for completion by September 2020.

HAYDON BRIDGE

The council has allocated £4.5million to improve the school buildings at Haydon Bridge High School. This will see a new main entrance and vocational centre, as well as improvements to the main hall, library, sports hall changing facilities and the performing arts and learning hub areas. In addition, the Sixth Form will be relocated with work due to start this spring.





Help your family cut back on sugar by swapping to lower sugar products.
To find out how:



Search
Change4Life



Download the
Food Scanner app



Look out
for the badge

change 4 life

© Crown copyright 2018

MAKE A SWAP WHEN YOU NEXT SHOP

In January 2019, Change4Life launched a new campaign to help parents reduce their children's sugar intake.

Children are eating twice as much sugar as they should be, which is bad for their health. Too much sugar can lead to serious health problems like type 2 diabetes, heart disease and painful tooth decay.

So why not "Make a swap when you next shop" and make simple swaps to lower-sugar food and drink options.

To help you find lower-sugar swaps, you can:

- 😊 Search Change4Life for loads of helpful tips, hacks and tasty low-cost and lower-sugar meal ideas.
- 😊 Download the **FREE** Food Scanner app to see how much sugar is in everyday food and drink products.
- 😊 Look for the Good Choice badge in-store and online to find lower-sugar food and drink options.

**ALCOHOL CAN CAUSE AT
LEAST 7 TYPES OF CANCER
INCLUDING
BREAST CANCER.**

Any level of regular drinking increases your risk of developing breast cancer. If you reduce your drinking you can reduce your risk.

**breast cancer
now**

Find out how at reducemyrisk.tv

Concerned about your drinking? Call Drinkline: 0300 123 1110

f t #7cancers

BALANCE
Getting the
measure of alcohol



Taking ANTIBIOTICS when you don't need them puts you and your family at risk



Taking antibiotics encourages harmful bacteria that live inside you to become resistant. That means that antibiotics may not work when you really need them. This puts you and your family at risk.

TAKE YOUR DOCTOR'S ADVICE

Keep **Antibiotics** Working



The Golden Guide is out now.

The Golden Guide, a free booklet that provides practical support for the over 50s, is now available. It is packed full of helpful information and advice about leisure, health, money, care and your home.

To get hold of a copy, ring the Age UK Northumberland's Advice Line on 01670 784821 and they will post one out to you free of charge.

Copies are also being distributed in local libraries, Citizens Advice, GP surgeries and selected branches of Boots pharmacies.

WEBSITE FOR EXPERT WEANING ADVICE



Public Health England has launched its first ever **Start4Life** campaign offering parents support and advice, during what can be a confusing time, on introducing solid foods to their baby.

A brand-new weaning hub has been launched on the Start4Life website to help parents during their weaning journey. Packed with NHS-approved advice and tips for each weaning stage, plus simple, healthy weaning recipes, it puts everything parents need to know in one place.

FOR MORE INFORMATION
on Start4Life's weaning hub visit:
www.nhs.uk/start4life/weaning

Can your Child Swim?

Let us teach your child to swim with confidence.
It could save their life!



Added benefits of our scheme:

- Swim England Framework of Lessons
- Monitor your child's progress online
- See when badges are awarded
- Graduate to the next stage

In partnership with


Northumberland
County Council

ACTIVE
NORTHUMBERLAND



01670 620 200

www.activenorthumberland.org.uk

Registered Charity No. 1153198

Time to get ACTIVE!

Feel GREAT with an active body and mind!



Discounted memberships for over 65's



- FREE walking groups
- Walking football
- Walking netball
- Aqua classes
- Pilates, Yoga, Aerobics
- Support, advice & MORE

As we get older, keeping an active body and mind is essential for your wellbeing! Call us to ask how you can get started

In partnership with


Northumberland
County Council

ACTIVE
NORTHUMBERLAND

 **01670 620 200**
www.activenorthumberland.org.uk

Registered Charity No. 1153198

DAI AND THE BLITZ GROUP

win national award

For the third year running Northumberland County Council has had a winning entry in the national Keep Britain Tidy awards.

This year Dai Richards and the Morpeth Litter Blitz group were judged best in the UK in the category of #LitterHeroes.

The council put Mr Richards and the Morpeth group forward for their outstanding work in cleaning up the town and championing all things 'green'.

The town had a number of litter picking and tidying initiatives, but Dai recognised that there would be benefits to a more coordinated approach and set up a network of litter pickers. Working together they have made a huge effort in cleaning up the town, collecting over 400 big bags of rubbish and numerous large items.

Mr Richards said: "I am greatly honoured that we have won this award. It is not just for me, but for every single person who has been involved in the litter picks in Morpeth. The most important message from our Morpeth Blitzes is that by all working as part of one team you can achieve superb results.

Northumberland County Council was also shortlisted for the second year running for its Love Parks campaign and the council's public protection team was shortlisted in the community engagement category for its Green Dog Walkers scheme.

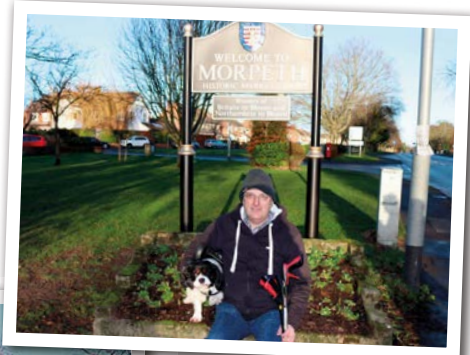


Photo: Dai Richards with other partners in the Morpeth Litter Blitz group



Help clean up our streets

Join the Great British Spring Clean

22 MARCH - 23 APRIL 2019 #GBSpringClean



Garden green scheme starts again

If you are a gardener and haven't already done so, why not join thousands of other residents in the county and take part in our green recycling scheme which provides a convenient way to dispose of cut grass, leaves, cuttings and small branches.

We collect the garden waste fortnightly from March until November and take it away to be recycled into reusable compost and soil conditioner.

Residents who used the service last year have been sent an invitation to renew. There is an annual charge of £40 for each wheeled bin (the equivalent of £1.80 per collection) so we can cover our costs.



IF YOU WOULD LIKE TO SIGN UP, PLEASE CONTACT US TO FIND OUT IF THE SERVICE IS AVAILABLE IN YOUR AREA:
gwaste.northumberland.gov.uk/register

MAY BANK HOLIDAY BINS

Throughout the weeks commencing May 7th and May 27th all household bins will be emptied one day later.

If your bin is normally collected on a Monday, it will be collected on a Tuesday. Tuesday bins will be collected on a Wednesday and so on.

Please place your rubbish, recycling or garden waste bins out for collection by 7am one day later than your usual day of collection.



SHOW THE LOVE FOR WHERE YOU LIVE

CALLING VOLUNTEERS TO JOIN BIG SPRING CLEAN

Northumberland residents are being urged to show their love for where they live by helping to clean up their local neighbourhood in support of The national Great British Spring Clean campaign.

Schools, community groups, businesses, town councils and enthusiastic individuals are all being encouraged to sign up to the community clean-up campaign by visiting www.keepbritain tidy.org/get-involved

Northumberland County Council will support local groups and individuals by providing litter pickers, hi-visibility vests, gloves, and rubbish bags and by picking up the refuse afterward. Anyone wishing for this assistance is asked to ring the local services team on **01670 622323** or email details to countryside@northumberland.gov.uk



22
MARCH
- 23 APRIL
2019

BE SOMEONE SPECIAL BECOME A RETAINED FIREFIGHTER

Northumberland Fire and Rescue Service is recruiting retained firefighters right across the county. Could you be one of them?

WHAT DOES IT INVOLVE?







Retained firefighters are men and women who combine their day jobs or duties while being 'on call' for the fire service and from home, ready to respond to emergencies when they are needed.

A retained firefighter provides the same level of emergency service as their full time colleagues, but on a part-time basis.

They attend fire, road traffic accidents and a range of other emergencies and also play an important role in community engagement activities.

WHY SHOULD I JOIN?

You will...

-  work shift patterns with the flexibility to maintain your primary employment
-  develop new skills such as first aid, LGV driving and fire safety awareness
-  develop confidence and skills in team working, management and leadership
-  get paid
-  get trained
-  perform an essential service for your community

PAY

Retained firefighters receive an annual retaining fee as well as additional payments for any training, incidents or community safety events they attend.

WHO CAN APPLY?

Men and women over the age of 18, living or working within 5 minutes of a local fire station.

WHERE IS MY LOCAL FIRE STATION?

Fire stations are located at: Allendale, Alnwick, Amble, Belford, Bellingham, Berwick, Haltwhistle, Hexham, Pegswood, Ponteland, Prudhoe, Rothbury, Seahouses, West Hartford and Wooler.

WHAT NEXT?

If you are interested then you will need to complete an entry form, which you can find online at www.northumberland.gov.uk/Fire/Recruitment.





FOR FURTHER INFORMATION:
Telephone: 01670 621123 for an informal chat
Email: fire.recruitment@northumberland.gov.uk

Reintroduction of south east rail line is firmly on track

The Secretary of State for Transport has seen first-hand plans for a new passenger line connecting Northumberland with Newcastle.



Transport Minister Chris Grayling spent more than an hour on a specially chartered train to find out more about the ambitious scheme to bring back rail passenger services throughout south east Northumberland.

Senior councillors took the opportunity to press the case for the reintroduction of the Northumberland Line as the Minister was transported to Bedlington and Newsham - which would be key stations on the future line.

The council has already announced proposals for a further £3.5m investment

to develop the plans to reintroduce direct trains between south-east Northumberland and Newcastle Central - with thousands of residents a day being transported along the 20-mile route between Ashington and Newcastle city centre.

Studies show that reintroducing passenger services to the current freight line could boost the local economy by up to £70m with more than 800,000 annual return journeys by 2038.

Commuters and shoppers could speed between Ashington and the heart of

Newcastle in as little as 35 minutes, with several new or rebuilt stations along the route linking towns to key areas of employment, training and leisure attractions as well as providing transport links across the wider region and the UK.

Council leader Peter Jackson said: "It was excellent be able to show the Transport Minister exactly what we're trying to achieve and continue to press for Government support."

Universal Credit

Need to understand what benefits apply to you?

Not sure where to go to make sense of it all?

Have your family or financial circumstances recently changed?

It's best to check before making a new benefit claim - contact one of our friendly advisors:

- Visit Citizen's Advice Northumberland
Call: 01670 339 781 Email:
uc@citizensadvicenorthumberland.org.uk
- Visit your local Customer Information Centre
- Call: 0345 600 6400
- Or have a chat with your landlord

Find out more online:

www.citizensadvice.org.uk/benefits/universal-credit

Pension Credit

Are you of State Pension Age?

You could be eligible for up to £250 Pension Credit a week!

We are encouraging residents of retirement age to check their eligibility for Pension Credit before major changes come into place.

Check your eligibility before 15 May 2019:

- Find out if you're eligible at gov.uk/pension-credit
- Call: 0800 731 0469
- Or pop into one of our Customer Information Centres for more information



Northumberland
County Council

www.northumberland.gov.uk

NEWS *in Brief*

TOURISM NETWORKING EVENTS

After striking gold for the first time in the 2018 British Travel Awards as the Best UK Holiday Destination/County, Northumberland's tourism industry is heading into 2019 on the crest of a wave and in full anticipation of another successful year.

Along with the county accolade, a host of Northumberland venues and attractions deservedly scooped individual awards in 2018 and they were represented at two large tourism fairs which took place in Alnwick and Hexham this month. The popular annual showcase events are well established in the tourism calendar and provide local attractions, service providers and producers with an opportunity to sign up, display their products and services, network with colleagues and discuss commercial opportunities and collaborations. The events also gave accommodation and hospitality providers the chance to collect information about local attractions and upcoming events for their guests.

The annual value of our tourism industry is more than £900 million. The sector is one of our major employers and a lynchpin of our local economy.

PRODUCED IN NORTHUMBERLAND...

The Produced in Northumberland scheme which promotes the local businesses that make, sell or serve foods produced within the county, is going from strength to strength.

Over 90 local food and drink businesses are now signed up to the scheme which guides residents, visitors and holiday makers towards authentic Northumberland delicacies to experience and take home.

The county council's restaurant at County Hall in Morpeth has recently been accredited as a Produced in Northumberland scheme member. The quality stamp verifies that the restaurant serves a wide range of delicious food and drink that is locally sourced right here in Northumberland.

For more information visit:
www.producedinnorthumberland.co.uk



BEST
BUSINESS ENERGY
SAVING TEAM

HELPING BUSINESS SAVE ON ENERGY BILLS

Businesses in Northumberland are being offered the chance to save money on their energy bills thanks to a new service.

The Business Energy Saving Team is helping small and medium-sized businesses across the north east to cut their fuel bills by becoming more energy efficient.

The team can provide eligible businesses with an energy efficiency audit to help identify ways to save energy. Businesses may also be able to get a grant to help make energy efficiency improvements.

The BEST Project is part-funded by the European Regional Development Fund (ERDF) and delivered by five local councils. In Northumberland, it is being delivered by Advance Northumberland.

For more information go to: www.best-ne.co.uk

DOG OWNERS DON'T FORGET TO MICROCHIP

Dog owners are being reminded that it is a legal requirement to microchip their dogs and ensure the details stored on the chip are up-to-date.

You can get your dog microchipped by contacting your local vet, or the county council on 0345 600 6400.



HIVE OF ACTIVITY

A special celebratory open day was held in Blyth last month to mark the two year anniversary and new home of the Newsham Learning Hive. The Learning Hive has been relocated to Newsham Pavilion and is open two days a week providing free support and training to help local residents develop their employment skills and access financial advice.



COMMUNITY GRANT

Community groups, charities and young people in the county can apply for funding from our much valued community grant scheme.

Grants of up to £5,000 are available to help deliver activities that benefit residents and communities.

For further information visit:
www.northumberland.gov.uk





April

Easter Adventure Quest

Saturday 6 - Sunday 28 April
Warkworth Castle

Join the hunt for dragon eggs on a legendary quest this Easter holiday. Crack the clues as you and your family follow the trail through the castle grounds. Intrepid adventurers who track down the dragon egg will get a certificate and a sticker to prove it, and there'll be a chocolate treat too!

For times and prices visit www.english-heritage.org.uk

The Great Chelsea Garden Challenge

Wednesday 10 April
Kirkley Hall, Ponteland

Sean Murray was chosen to compete on TV with 5 other amateur gardeners for the chance to design and build a garden at the RHS Chelsea Flower Show. Sean won and this is a talk about his story, how he did it and what happened when he got there.

7pm

Members £2, non-members £3
friendsofkirkleyhall.org

Easter Egg hunt

Wednesday 17 April -
Sunday April 21

Kirkley Hall, Ponteland.

The Easter Bunny is getting ready for the busiest day of her year... but there's a problem - her assistant has lost the eggs. Can you follow the map and find all the eggs in time to save Easter?

10am and 12pm.

£13 per child (includes one adult), £4.95 (additional adults)
To book call 01670 841 230



Kite Festival

Saturday 20 - Sunday 21 April

Newbiggin Maritime Centre
Festival with special kite making workshops for the children and international kite flyers demonstrating spectacular kite flying displays

10am - 4pm. Free

Haltwhistle Walking Festival

24 April - 6 May

A ten day festival with 25 guided walks. Haltwhistle is at the heart of the festival, but walks are in a wide area around and about, including the Northumberland National Park and Hadrian's Wall Country.

For more information and meeting points call:
07565 987852



May

Berwick Riding of the Bounds

Saturday 4 May

The traditional ride-out of the boundaries of Berwick to keep them known to the Scottish and English. The event regularly attracts a cavalcade of 100 riders.

Riders assemble in Parade Car Park, proceed to the Barracks and then the Guild Hall, leaving the town via Church Street at around 11am

Kielder Vintage and Classic Vehicle Show

Sunday 12 May

Kielder Castle

An amazing display of vintage cars, motorbikes, tractors, buses and more. Visit the craft fair in the castle and grab a bite to eat from the BBQ tent or cafe.

£5. visitkielder.com

The Sound of Music

Wednesday 1 - Sunday 5 May

The Maltings Theatre, Berwick
Berwick Operatic Society is to perform *The Sound of Music*, the classic tale of Maria's journey from being a young, free spirited novice nun to a member of the Von Trapp family singers.

For times and prices visit:
www.maltingsberwick.co.uk



Countryside Fair

Sunday 12 May
Kirkley Hall, Ponteland

A variety of stalls selling local crafts, food and drink and lots of fantastic countryside events and activities.

10am - 4pm. £5 per person,
Under 12's - free.

Pay on the gate.

Amble Puffin Festival

Saturday 25 - Monday 27 May

Fun and activities for all the family in Amble including: craft fair, guided nature walks, bird watching, local history talks, arts and crafts, watersports and live music.

For full details visit:
www.puffinfest.co.uk

Northumberland County Show

Monday 27 May, 9am - 6pm

Bywell Hall, Nr Stocksfield

Plan an amazing day at the show - animals galore, fun for all the family, crafts, produce and great shopping.

www.northcountyshow.co.uk



June

Northumberland Miners' Picnic

Saturday 8 June
Woodhorn Colliery

This event celebrates the area's proud people and coal mining heritage combining music, family entertainment and history.

For more information visit:
www.museumsnorthumberland.org.uk

Northumberland's Secret Seas

Wednesday 12 June
Kirkley Hall, Ponteland

A talk by diver Ben Burville. Discover the mysterious underwater world off the Northumberland coast and find out more about the behaviour of grey seals, dolphins and some incredible marine birds.

7pm.

Members £2, non-members £3
friendsofkirkleyhall.org

Bywell Castle Food Fair

Saturday 22 June
12 - 6pm

The first food fair in the gardens of Bywell Castle on the River Tyne. Lots of stalls and plenty of space to wander around, sit and enjoy the view.

All welcome. Free entry.



Mighty Dub Fest

Friday 14 - Sunday 16 June
Alnwick

Set overlooking Alnwick Castle. Fully packed family entertainment, trade stands and live music. Enjoy a weekend of music, mayhem and awesome VWs.

www.mightydubfest.co.uk

Alnmouth Arts Festival

Saturday 15 - Sunday 16 June

A must see event for all art lovers, situated in 27 venues throughout picturesque Alnmouth you will discover 70 exhibitors work on display and for sale.

From 10.30 am

www.alnmouthartsfestival.com

Northumberland Live - Blyth

Saturday 22 June
Blyth Beach

Free family music festival. Live music, street theatre, fun fair and food.

www.facebook.com/NorthumberlandLiveFestival





Northumberland
County Council

you live, you learn

Adult learning courses to advance your career,
retrain, find employment or try something new.

IT'S NOT TOO LATE TO ENROL
CALL 0345 600 6400

www.northumberland.gov.uk/adultlearning

