

# Northumberland news



NEW FIX MY STREET SERVICE

JOIN GEAR CHANGE CHALLENGE

CORONATION CELEBRATIONS

SUPPORT OFFERED AT FAMILY HUBS

# Please remember...



## YOU NOW NEED PHOTO ID WHEN VOTING AT A POLLING STATION

Accepted forms of voter ID include:

- A driving licence (photo)
- A passport
- Concessionary travel passes
- A Blue Badge

For the full list of accepted ID's or to find out how to apply for a free photo ID if required, go to:

[Electoralcommission.org.uk/voterID](https://electoralcommission.org.uk/voterID)

For further information contact the elections team at:

[voter-id@northumberland.gov.uk](mailto:voter-id@northumberland.gov.uk)

or ring 01670 624844



**Northumberland**  
County Council

# INSIDE

- 4 Street repairs
- 5 Dementia-friendly housing  
Northumberland Line
- 6 Morpeth's new  
Leisure Centre
- 7 Coronation celebrations
- 8 Family Hubs
- 9 Warm Welcome spaces  
Communities Together
- 10 Borderlands  
boosting business
- 11 Water safety  
Wildfire warning  
Rogue waste carriers
- 12 Home energy savings
- 13 The Big Northumberland  
Gear Change
- 14 Community Playzones
- 15 Cost-of-living for families
- 16 Fostering and adoption
- 17 Youth Cabinet & Parliament  
School Governors
- 18 Union Chain Bridge  
Vape recycling  
Summer Reading  
Challenge


## KEEP IN TOUCH...

To stay informed about all our service developments please follow us on our social media channels.

 [facebook.com/northumberlandCC](https://facebook.com/northumberlandCC)

 [twitter.com/N\\_LandCouncil](https://twitter.com/N_LandCouncil)

 [instagram.com/NLandCC](https://instagram.com/NLandCC)

 [youtube.com/NorthumberlandTV](https://youtube.com/NorthumberlandTV)

## A MESSAGE FROM THE LEADER OF NORTHUMBERLAND COUNTY COUNCIL, GLEN SANDERSON

### Welcome to the summer edition of Northumberland News!

With winter well behind us and hopefully a long, warm summer ahead, many of us will be spending more time out and about enjoying our glorious county, and it is looking absolutely fantastic.

In the coming months we're working on a number of our Queen Elizabeth Memorial Schemes in our open spaces along with a wider programme of park improvements.

And with our beaches again named among the best in Britain and the re-opening of the Union Chain Bridge following its three-year-restoration, we really are spoiled for choice when it comes to choosing a day out in Northumberland.

It's been another busy few months, with celebrations across the county for the Coronation of King Charles III, to the opening of our latest leisure centre in Morpeth, confirmation of funding for the



rail scheme which will open from summer 2024 and the opening of the amazing Lilidorei play village and Ad Gefrin.

There really are good things happening across the county.

I would also like to take this opportunity to welcome our new Chief Executive Dr Helen Paterson to the county. Helen joined us in the spring and has been extremely busy - getting out and about, meeting staff, residents and businesses, working on our priorities and taking the county forward.

I do hope you have an enjoyable summer.

## 'HELLO FROM HELEN', THE COUNTY COUNCIL'S NEW CHIEF EXECUTIVE

### Our new Chief Executive joined the County Council earlier this year.

Dr Helen Paterson, formerly Chief Executive at Walsall Metropolitan Borough Council, has already brought her energy, enthusiasm and a wealth of local government experience to the role – including from her previous roles as the Chief Executive of Wrexham as well as Executive Director for Sunderland City Council.

Speaking about her role, Helen said: "I'm delighted

to have joined the County Council and I'm thoroughly enjoying getting to know this beautiful county better.

"My work has already taken me across Northumberland. This is a Land of Great Opportunities, and I can see we have a fantastic team here working for the benefit of all our communities. This is something I very much want to build on over the coming years.

"I have made Northumberland my home, I love living here and already feel part of the



community. Thank you to everyone who has given me such a warm welcome to the county."

### STAY INFORMED

Please enter the link below to sign up for updates on important local news and changes to council services: [nland.cc/weekly](https://nland.cc/weekly)

Front cover image: E-bike enthusiasts Sandra and David.

# NEW SYSTEM LAUNCHED FOR STREET REPAIRS

A new online service has been launched to report problems on the county's streets.



**FixMyStreet Pro enables people to photograph, locate and highlight an issue all by using their mobile phone.**

Issues can be reported simply by going to [nland.cc/fix](http://nland.cc/fix) on a mobile phone, computer or tablet.

The system can be used to report a whole range of issues from potholes and faulty street lights to abandoned vehicles, litter and incidents of flytipping.

All reports go straight into the council's digital systems where they can be assessed, allocated for any necessary actions and if the user sets up an account they can be informed of progress and completion.

The system will significantly improve communication with residents, help reduce duplicate reports on the same issue and even speed up responses by giving staff a precise location of where the problem is.



# FIX MY STREET

**Report it:**

- Litter
- Potholes
- Fly tipping
- Dog fouling

**Sort it.**



## DEMENTIA-FRIENDLY BUNGALOWS SUPPORT INDEPENDENT LIVING

**Building work is due to start later this year on 13 dementia friendly affordable bungalows which will be built at Lyndon Walk in Blyth.**

The bungalows have been designed to specifically support residents who are living with dementia and Alzheimer's, enabling them to live independently in their own home, with support from their spouse, family or carers.

The two bedroomed properties will be built by Ascent Homes

for Northumberland County Council. They will be available for affordable rent and allocated via a special allocations process led by the county council's Adult Social Care service.

The small housing complex will be managed by Northumberland County Council Housing Service staff. Extra care and respite care for the carer will be provided by a new team.

### SPECIAL FEATURES INCLUDE:

- Level access wet rooms
- A technology system that will allow carers to be seen by the resident on a two-way screen
- Smoke and heat detectors that can alert carers if needed
- Signage to aid wayfinding
- Contrasting colours in the bathroom and hallway doors to help with identification
- A sensory garden that is safe and secure



## NORTHUMBERLAND LINE PROJECT WELL ON TRACK

Work on restoring passenger services to the Northumberland Line between Ashington and Newcastle is well on track to open from summer 2024.

Once complete, passengers will enjoy a journey time between Newcastle and Ashington of just 35 minutes, with services operating regularly seven days a week, providing easy access to jobs, education and tourism opportunities.

The project got a major boost this spring when the Government confirmed its commitment to work with the County Council, Network Rail and Northern Rail to bring back regular services to the vital line.

The completed line will see brand new stations built at Ashington,

Bedlington, Bebside, Blyth Newsham, Seaton Delaval and Northumberland Park, along with miles of track re-laid and a host of new infrastructure.

Work is progressing well across the stations, while major level crossing works will take place and are scheduled for August this year.

Not only will the restoration of passenger services reconnect communities and improve connections, but it will also boost the region's economy through improving access to jobs.

The line's construction work alone has also created almost 100 high-skilled jobs and apprenticeships, demonstrating the benefits it's already having on the local community.

**For the latest on the project visit: [www.northumberlandline.uk](http://www.northumberlandline.uk)**



# MORPETH'S NEW LEISURE CENTRE ENJOYED BY ALL

Thousands of residents have been enjoying the fantastic facilities at Morpeth's new sports and leisure centre.



## HERE'S WHAT'S NEW:

- Six-lane swimming pool with spectator gallery
- Learner pool with moveable floor
- Tranquillity spa facilities
- Four-court sports hall
- New state of the art gym with Technogym equipment and functional training area
- Dedicated indoor cycling studio
- Two fitness studios
- Modern and welcoming reception with a café and children's soft play

## BECOME A MEMBER OR PAY-AS-YOU-GO

You can pay-as-you-go when you visit the centre, but there are a range of memberships on offer which work out cheaper for regular users and which have many additional benefits.

To join or find out more about the new Morpeth Sports & Leisure Centre go to: [www.activenorthumberland.org.uk](http://www.activenorthumberland.org.uk)



Members and pay-as-you-go customers are advised to book fitness classes and activities via the **Active Northumberland app** or by calling **01670 620 200**.

## GIVING A LIFT TO ACCESSIBLE SWIMMING

Swimming is one of the best ways to keep fit for all ages and abilities so improving pool access for people with disabilities and mobility issues was uppermost in our plans for the new Morpeth Leisure Centre.

### FEATURES INCLUDE:

- Poolpod to lower less mobile people into the pool
- Accessible toilets and showers
- Accessible changing areas with a hoist
- Wheelchair accessible lockers
- Accessible electronic doorways

The Poolpod allows people to enter the pool via a submersible and mobile pool



platform, operated by users themselves or with assistance from a lifeguard.

Users can remain standing as they enter the pool or use the custom submersible wheelchair which allows users to transfer from their own wheelchair in the privacy of the changing room.

## CLASSROOMS WITH A VIEW

The whole second floor of the new Morpeth Leisure Centre is dedicated to learning, delivered on behalf of the council by Northumberland Skills.

For adults, we have a range of part-time courses ranging from creative writing and other leisure courses to English, maths and digital qualifications.

For school leavers, we have study programmes to kick-start careers in business or digital skills, plus a wide range of professional development and apprenticeship training programmes in areas such as teaching assistant, business, leadership and management.

There are learning opportunities for everyone. Check out the latest course guides at [northumberlandskills.co.uk](http://northumberlandskills.co.uk)





## LOCAL LIBRARY

Morpeth Library has relocated into the sports centre building within a beautiful modern, light setting overlooking the River Wansbeck.

It's **FREE** to join – call in, or join online at [mylibrary.co.uk](http://mylibrary.co.uk)

Mon and Fri 9am – 6pm  
Tues, Weds, Thurs 9am – 5pm  
Saturdays 9.30am – 12.30pm

## INCLUSIVE SUMMER ACTIVITY PROGRAMME

Northumberland's Ability2Play scheme for young people and adults with special educational needs and physical disabilities will be running again this summer.

There will be a fantastic Stay All Day option where parents can drop their children off and leave them with fully qualified staff for an action-packed day of activity in a fun and safe environment. There will also be bowling, cricket, clip n climb, outdoor adventure camps and much more!

If anyone wants to take part or find out more please email: [Ability2Play@northumberland.gov.uk](mailto:Ability2Play@northumberland.gov.uk) or visit Facebook: [@Ability2Play](https://www.facebook.com/Ability2Play)



# CORONATION CELEBRATIONS

Communities across the county strung up the bunting, donned red, white and blue and celebrated in style over the Coronation Bank Holiday weekend.

Here is just a small snapshot of some of the images from the weekend as communities joined together to mark the momentous occasion of the Coronation of King Charles III.

Over 100 grants were awarded through our special Coronation Community Fund to help the celebrations.

Voluntary and community groups, schools, local charities, parish and town councils and churches were

awarded up to £500 to host events and activities over the weekend.

A special showing of The Coronation was held on a big screen at Alnwick Castle which was celebrated by some of our specially invited local community heroes, as a little thank you for all their efforts.

On the Sunday, members of the public of all faiths were invited to attend a special service in Hexham Abbey which was very well attended.

To see more photos of celebrations around the county go to: [www.greatnorthumberland.co.uk](http://www.greatnorthumberland.co.uk)

# PRAISE FOR NORTHUMBERLAND'S "TRAILBLAZING" FAMILY HUBS



Dame Andrea Leadsom, the Government's Early Years Advisor, praised Northumberland's Family Hubs for their role in giving children the best start in life.



Family Hubs are a one-stop-shop for family support - from parents-to-be right through the teenage years to 19 – or up to 25 for children with special education needs and disabilities.

Midwives, registrars, health visitors, early years and mental health professionals, youth specialists and a host of other services

- including relationship and parenting programmes, and financial advice all work together to meet the needs of children, young people and families.

Northumberland is proud to be one of 14 "trailblazer" local authorities awarded additional funding to fast-track delivery of these services, leading the way and

supporting other local authorities. The MP, who oversees the Start for Life elements of the joint Family Hubs and Start for Life programme, visited hubs in Blyth and Berwick to see how they are making a difference to the lives of people in their communities and launch the new Family Hub website.



## BIG DAY FOR ELSIE!

Among the families who met Dame Andrea were Alyx and Robbie Maving, who were registering the birth of one of the county's youngest residents, 10-day-old Elsie, at the Blyth Central Family Hub.

Alyx, 29, who lives in Blyth with husband, Robbie, 30, said: "It was really good and much easier to be able to come along and register her here close to home.

"We've been given a pack with lots of information about all the different support and classes and we've registered with the hub so we'll definitely be back again soon."

For further information or to register your interest scan QR code





# WARM WELCOME THROUGHOUT NORTHUMBERLAND

Voluntary groups, community organisations and others from our communities came together to establish a network of Warm Welcome community spaces.

These include, but are not limited to, community centres, church halls, libraries and community hubs. They are free to visit, and all promise a warm welcome when you arrive.

Some places may offer a hot drink, activities and other things like free access computers and Wi-Fi. You can come and spend time quietly or meet

other people in your community for a chat. Each warm welcome group is different so there is something for everyone.

If you see the warm welcome sticker in the window please visit, we'd love to meet you.

If you are an organisation offering a warm welcome in your community already and you'd like to join the network, please get in touch. All our partners agree to a warm welcome promise.



Contact Northumberland Communities Together on: **01670 620 015**  
 Email: [NCT@northumberland.gov.uk](mailto:NCT@northumberland.gov.uk) 9am to 6pm (Monday to Friday)

# NEED SUPPORT? WE'RE HERE TO LISTEN

Working alongside community groups, partners, volunteers and council services the Northumberland Communities Together team connect residents with local support.

If you or anyone in your family would like support, or identifies with any of

the issues listed, please pick up the phone, we're here to listen.

- Perhaps your financial circumstances have changed with reduced hours, redundancy or benefit changes
- Worried about bills, financial pressures or the cost of living

- Feeling lonely, overwhelmed or struggling with mental health
- Concerned about a neighbour that may not have support nearby from family or friends

**CAITLIN CARE WORKER BEDLINGTON**

**COULD YOU MAKE SOMEONE SMILE?**

**CARE FOR LIFE**

If you're caring and compassionate an adult social care role with Northumberland County Council could be the life changing career for you.

For more information call us on 01670 620162 or 07927 579599  
 email [carerecruitment@northumberland.gov.uk](mailto:carerecruitment@northumberland.gov.uk)  
[www.careforlife.org.uk](http://www.careforlife.org.uk)




Call the Northumberland Communities Together Response Hub on:  
**01670 620 015**  
 9am to 6pm (7 days a week)

If it is urgent and someone needs immediate support, help or protection ring the emergency response line **OneCall** on **01670 536 400**. This line is open all day, every day of the year.

# BORDERLANDS BOOSTING BUSINESS

From the world's largest play structure, to the first distillery in Northumberland in centuries, major projects in Northumberland are benefiting from Borderlands funding.

The Borderlands Inclusive Growth Deal is a £350 million investment from the UK and Scottish Governments, supported by over £100 million of funding from local partners.

The Borderlands Partnership is made up of Northumberland County Council, Dumfries and Galloway Council, Scottish Borders Council, and Westmorland and Furness Council.

It aims to provide an extensive programme of investment to deliver significant economic benefit for communities and businesses to areas that border England and Scotland. And the county is already reaping the benefits.

Ad Gefrin in Wooler is an Anglo-Saxon Museum and Whisky Distillery,



the first in Northumberland for over 200 years, which opened in Spring 2023. Borderlands invested £4 million in the project which aims to attract 35,000 visitors annually.

Down the road, the world's largest children's play park, Lilidorei at the Alnwick Garden, has just opened to the public. A total of £5.5million was

supplied by Borderlands to help bring the Duchess of Northumberland's idea to life.

And in Berwick, work is expected to start early next year on a new Maltings theatre. Borderlands is the principal funder of the multi-million-pound project to boost the region's cultural offering.



For more information on the Borderlands Inclusive Growth Deal visit: [www.borderlandsgrowth.com](http://www.borderlandsgrowth.com)



## WARMER WEATHER WILDFIRE WARNING

While the warmer weather is welcomed by most, it also unfortunately brings an increased risk of wildfires.

Wildfires are a big problem because they cause considerable damage to our wildlife, natural environment and local communities. It can take many years for an area burned by a wildfire to recover.



### BE WILDFIRE AWARE AND SAFE:

- Don't light small fires when out. It might seem like a nice and cosy idea but these can easily become a wildfire.
- Take a picnic not a BBQ on days out in the countryside. Please don't light barbecues, especially disposable ones and don't bring fire pits or build small fires as it is difficult to completely extinguish these whilst out in the countryside.
- Never use a sky lantern as these can be a fire risk as well as cause suffering or kill animals.
- Call 999 if you suspect there is a wildfire. The sooner we know about one, the sooner we can deal with it. It's better to be safe than sorry.



## WATER SAFETY: SAFETY TIPS

There are many dangers when people enter open water including: the cold, which can stop people in their tracks; invisible currents,

which can sweep even the most competent swimmers away; and objects on the river bed that can harm swimmers.

### SAFETY TIPS:

- Never swim alone or after drinking alcohol.
- Don't dive in, it could be shallower than you think or there may be hidden underwater dangers.
- You could also get cold water shock as water is often colder just a few feet below the surface.
- Don't swim near weirs, once caught in the undertow you have little chance of escape.
- Choose your landing point before you go in as it may be impossible to get out.
- Always keep within your depth.

## WATCH OUT FOR ROGUE WASTE CARRIERS

Many of the culprits who have been caught and prosecuted for fly tipping are rogue waste carriers who charge residents to collect their bulky household waste, but then dump it unlawfully.

If you are using an independent waste carrier you should always ask to see the operator's waste carrier licence, issued by the Environment Agency.

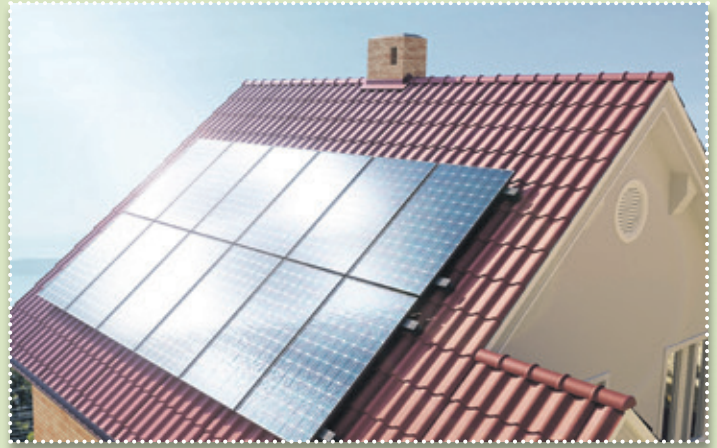
This is really important because, if you make the mistake of employing an unlicensed waste carrier and they dump your waste illegally - you could also be fined along with them.

### BE WARY OF:

- Businesses that only operate through social media
- Businesses that do not have a landline phone number or business address
- Anyone coming to your door offering to remove rubbish on the cheap.

### How to check a waste carrier is reputable

Visit the Environment Agency's waste carrier register: [nland.cc/waste](http://nland.cc/waste) and enter the business name or, search for licensed waste operators near you.



# MAKING YOUR HOME MORE ENERGY EFFICIENT

The council is helping households which are low-income and not heated by mains gas in Northumberland keep warm, become more energy efficient and reduce their carbon footprint.

Government funding has been made available through the council's Warmer Homes Scheme to enable households in Northumberland to have energy efficiency upgrades and low carbon heating solutions installed.

Eligible households in the county,

including owner-occupied and privately rented properties, can apply for energy saving upgrades such as:

- Wall insulation (internal or external)
- Floor insulation
- Loft insulation
- Low carbon heat systems, such as air source heat pumps
- Solar panels
- Heating controls

Successful applicants will have an assessment completed for their property, after which the assessor will create an energy-saving plan specific to the property.

All recommendations will be tailored to individual homes so that the most appropriate energy saving measures are installed.

Households can check their eligibility and apply at: [nland.cc/warmerhomes](http://nland.cc/warmerhomes)



## HOME ENERGY SAVING TOP TIPS

- 1 Only fill the kettle with the amount of water that you need.
- 2 Unplug chargers as soon as batteries are fully charged, or the chargers are not in use.
- 3 Wait for a full load before running your dishwasher and washing machine.
- 4 Cook using the right-sized hob for small and large pots.
- 5 Seal up any window and door cracks with weather stripping or caulk.
- 6 Use the colder setting on your washing machine.
- 7 Turn off all lights, appliances, and electronics not in use.
- 8 Don't leave any appliances on stand-by.
- 9 Use energy efficient light bulbs.
- 10 Shut doors to areas you're not using.
- 11 Only cool or heat the rooms where you spend the most time.
- 12 Take shorter showers to save water and energy.

# THE BIG NORTHUMBERLAND GEAR CHANGE

The Big Northumberland Gear Change is a local campaign to encourage us all to slow down, take stock and adopt more sustainable ways of moving around the county by walking, cycling and using public transport more often.



Reducing our reliance on cars is crucial to achieving Northumberland's net zero target by 2030.

With a third of all trips made in the county less than 5km, there is plenty of potential for us all to ditch our cars, some or all of the time, in favour of healthier, greener and happier ways of getting around.

## JOIN OUR SIX-WEEK CHALLENGE

Why not take on this summer's six-week challenge to become a Northumberland #GearChanger.

Small changes make a big impact, and our challenges are all about

starting small while making an undeniable difference to our climate and personal wellbeing.

Our Big Northumberland Gear Change walking and cycling challenges are designed to kick start lasting lifestyle changes.

### The challenges benefit:

- The environment
- Your finances
- Your physical health
- Your mental health

Why not sign up today and receive a weekly email with tips on how to become greener and leaner!



Download our six FREE challenges this summer at:

[www.northumberlandgearchange.co.uk/challenges](http://www.northumberlandgearchange.co.uk/challenges)



## MEET OUR MOVERS!

Say hello to people who have decided to do things differently...

Meet the Northumberland residents who have made the switch to more sustainable ways of travel.

Whatever the reason – physical and mental health, mindfulness, money-saving, or climate consciousness – our #GearChangers have unique and inspiring journeys that have led them to ditch the car now and again in

favour of walking and cycling.

Using pedal and people power to get around is one of the simplest things we can all do to help the environment.

Watch their stories and be part of our Gear Change community today at [nland.cc/BNGCstories](http://nland.cc/BNGCstories)

# NEW COMMUNITY PLAYZONES LAUNCHED

We're developing new outdoor Playzones in communities across the county which can be used for a range of sports and physical activities for all ages.



Northumberland's PlayZones will provide a safe and inclusive recreational space which can be used at any time while encouraging more people to reap the mental and physical health benefits that being active brings.

Last year, a call out was made for communities to get involved and we've consulted extensively with community organisations and residents on the design and location of the sporting areas.

Playzone is a National Programme, delivered through the Football

Foundation, to provide or refurbish a Multi-Use Sport Area in communities where we have demonstrated inequalities in access to opportunities in areas of high deprivation.

**The scheme has been split into two phases:**

## PHASE ONE LOCATIONS:

- Alnwick Community Centre
- Amble Welfare
- Newbiggin MUGA (next to the Sports Centre and Community Hub)
- Westlea Football Field, Bedlington
- Hirst Park, Ashington
- Eastwoods Park, West Wylam

## WHAT HAPPENS NEXT?

Once the funding has been confirmed and planning permission obtained, Playzones in these communities should be built this year.

## PHASE TWO PROPOSED LOCATIONS:

- Haltwhistle
- Hexham East End
- Seaton Valley
- Berwick
- Cramlington
- Wooler
- East Bedlington
- Blyth
- Lynemouth
- Choppington

## WHAT HAPPENS NEXT?

Consultation will start shortly with these communities to identify potential sites and the types of activities which people want included. It is anticipated that work will start on these Playzones in spring 2024.

## PLAYZONE FUNDING

The council is investing £300,000 in the scheme with £900,000 coming from Sport England with other sources of funding identified.





# COST-OF-LIVING SUPPORT CONTINUES FOR FAMILIES THIS SUMMER

Families will continue to be supported with the cost of living over the summer holidays.

Parents or carers of children and young people who receive free school meals during term time are eligible to receive vouchers that can be used towards food, fuel and other essentials including school uniform.

Over 9,000 children and young people will benefit from the support and those eligible will receive communications via their school.

An action-packed programme of fun activities will also be making a return for the holidays as part of a government scheme to encourage healthy eating and an active lifestyle.

The fully-funded holiday programme means eligible children and young

people will be able to fill their holidays with adventure as they make new friends, learn new skills and make memories to cherish forever.

There will be some fantastic experiences on offer including sport, music, dance, drama, art, cooking and gardening. Those taking part will also receive a healthy meal as part of the council's wider commitment to ensure those who receive free school meals in term time continue to do so.

For more information regarding Northumberland Holiday Provision or to book a place visit: [nland.cc/E2IG](http://nland.cc/E2IG)



A variety of Summer Holiday Activity and Sports Camps operate across our Northumberland Schools Partnerships. If you would like to know more about what is available in your location, contact your school.

If you think your children might benefit from the holiday clubs or you and your family need any further support, please call the Northumberland Communities Together Response Hub on:

**01670 620 015 9am-6pm,**  
**seven days a week or email:**  
**[NCT@northumberland.gov.uk](mailto:NCT@northumberland.gov.uk)**  
to find out more.



 Apprenticeships

**UPSKILL  
RE-TRAIN  
AND CHANGE  
YOUR LIFE**

**WE'RE RECRUITING! APPLY NOW**



# GIVE BACK TO YOUR COMMUNITY - FOSTER WITH NORTHUMBERLAND!



Many people still rule themselves out of fostering for being too old, not owning their own home and lots of other reasons.

But being in a stable position in your life and having a spare room are the only basic eligibility criteria.

### Here are our top five myth busting fostering facts:

- There is more than one type of foster care role you can do - including full or part-time.
- Single people, straight and LGBTQ+ couples and families with children all make brilliant foster carers.
- You can foster with a disability.

- Taking anti-depressants doesn't stop you from caring for a child.
- You won't be caring for a child on your own – Northumberland Fostering Service will provide training and access to lots of different support to help you and our children - whatever care they need.

Meet Debbie and her first fostered daughter Shauna in their family memories podcast on our YouTube playlist page: [nland.cc/fostervideos](http://nland.cc/fostervideos)

Join our foster families at a face-to-face or online **Is fostering for me? event:**

**20th June at Concordia Leisure Centre Cramlington at 6pm**

**5th July online from 6pm**

## IT'S A GREAT TIME TO START FOSTERING WITH NORTHUMBERLAND

- ✓ Enhanced allowances.
- ✓ Dedicated foster family support workers in addition to fostering social workers.
- ✓ Holidays and activities for children and families.
- ✓ Blue Light card and Foster Talk cost of living discount scheme.
- ✓ Access to our Mockingbird and Buddy-Mentor schemes.
- ✓ Community-based support.
- ✓ Full training programme.
- ✓ Retainer fee so you have an income when you don't have a child living with you.
- ✓ 'Earn and learn' bank work opportunities.
- ✓ ...and much more.

Call Caroline on **01670 62 62 62 / 07779 983 165**  
or email: [Caroline.Matthews@northumberland.gov.uk](mailto:Caroline.Matthews@northumberland.gov.uk)

## ADOPTIVE PARENTS ARE NEEDED TODAY!

Around 30 children are currently waiting for their forever family. The oldest is aged eight, some are brothers and sisters, and there's one group of four siblings.

When you contact Adopt North East, they will help you come to a decision about whether to start your adoption journey. Often, the best way to help you think about adopting is to attend one of their information events, where you can meet some of the friendly team, hear from adopters themselves and ask any questions:

**Wednesday 5 July, 6.30-8.30pm:** Adopt North East office, Longbenton, NE12 8QP

**Thursday 3 August, 6.30-8.30pm:** Online event

**Thursday 7 September, 6.30-8.30pm:** The Linskill Centre, North Shields, NE30 2AY

**Friday 6 October, 6.30-8.30pm:** Online event

*Adopt North East is your local adoption agency, working on behalf of Northumberland County Council.*

Call **0191 643 5000** to find out more, or view all upcoming sessions on the 'Events' section of the website at: [www.adoptnortheast.org.uk](http://www.adoptnortheast.org.uk)



## COULD YOU BE A SCHOOL GOVERNOR OR TRUSTEE?



Schools across Northumberland are looking for committed and enthusiastic members of the community to join their governing and trust boards.

There are 151 schools across the county attended by 40,651 pupils. The number rated Good or Outstanding by Ofsted is at a record high. The latest figure stands at 92.6%, higher

than the national average of 88%.

School governors and academy trustees are at the heart of everything a school does and play a vital role in giving children and young people the best start in life.

They ensure clarity of vision, ethos and strategic direction, hold executive leaders to account and oversee financial performance of the school.

If you are a committed and inquisitive person this role could be just what you are looking for to further challenge yourself and help others.

You don't need to have a child at school to become a governor or trustee.

If you would like more information on becoming a school governor or academy trustee, register your interest at: [www.nland.uk/School-Governor-Interest](http://www.nland.uk/School-Governor-Interest) or email [schoolgovernors@northumberland.gov.uk](mailto:schoolgovernors@northumberland.gov.uk)

## MEET YOUR YOUTH CABINET AND YOUTH PARLIAMENT MEMBERS

Thousands of pupils from across Northumberland went to the polls to select their new Youth Cabinet and Youth Parliament members.



L-R Gracie Dalgarno-Todd; James Hickie; Cllr Glen Sanderson; Dr Helen Paterson, Chief Executive, NCC; Emily Trebillcock



Over 6,000 11-18-year-olds from middle, high and secondary schools voted in the annual Youth Elections in February, casting their votes for a record number of candidates.

Key issues on the agenda included mental health, the climate emergency, equality and jobs for the future.

Successful candidates in the Northumberland Youth Cabinet election were Billie Brodie, Ashington Academy; Bailey Cowell, Ashington Academy; Gracie Dalgarno-Todd, Astley

High School; James Hickie, Ponteland Community High School; and Krzysztof Rymarczyk, Corbridge Middle School.

Also elected to represent Northumberland in the UK Youth Parliament are James Hickie and Emily Trebillcock. They're now hard at work planning their campaigns for the year ahead.

**They are one of many youth participation groups here at the council, find out more here: [nland.cc/YouthVoice](http://nland.cc/YouthVoice)**



## ALWAYS RECYCLE VAPES

We've set up vape tube recycling bins at our Household Waste Recovery Centres – in fact we are among one of the first local authorities in the country to do this.

The vaping devices, commonly used as an alternative to real cigarettes, contain lithium batteries which can be highly flammable and should never be disposed of in general waste.

The vapes will be taken away by a local company who will recycle the batteries and metal.

## WORLD FAMOUS BRIDGE REOPENS

The 202-year-old Union Chain Bridge, the oldest vehicle suspension bridge in the world, re-opened in April.

The famous structure connecting England and Scotland has been rebuilt piece by piece over the past two years.

Funding for the scheme came from a £3.13m National Lottery Heritage grant. Northumberland County Council and Scottish Borders Council committed match funding towards the £10m scheme, with other fundraising activities progressed by the Friends of Union Chain Bridge in support of the project.



## FOOD WASTE VEHICLE NAMED

The county's new food waste vehicle has been aptly named 'The Devourer' by keen recycling students at Bedlington West End Primary School.

The name is now emblazoned across the vehicle which is collecting food waste as part of a trial recycling scheme involving over 4,000 households.

The waste is taken to a special processing plant where it is used to generate renewable electricity and gas. It also produces an organic fertiliser, which can be used in farming.



## SIGN UP FOR SUMMER READING CHALLENGE

If you're looking for a fun, free way to keep your children occupied during the holidays, while helping them to improve their enjoyment and confidence in reading, then sign them up to our summer reading challenge in libraries across Northumberland. This year's theme is sport!

Children will be encouraged to read six or more books collecting stickers along the way. They will also be rewarded with a free mini frisbee, a certificate and a medal on completion.

There is also a mini reading challenge for children under four years old. Sign up for free at your local library to receive a colourful collector pack to keep track of their reading and to find out more about sports themed events that have been organised by the libraries.

The Challenge starts on **8th July**. For further details and information log on to [www.mylibrary.co.uk](http://www.mylibrary.co.uk)

There will be a variety of events in Northumberland libraries to support the reading challenge that can be booked via [nland.cc/events](http://nland.cc/events)





**PASSIONATE ABOUT FITNESS?**

**JOIN  
THE  
TEAM**

*love being* ♥

**ACTIVE**

SWIM • GYM • FITNESS • FUN

- Free membership
- Flexible working
- Benefits and discounts

[activenorthumberland.org.uk/careers](http://activenorthumberland.org.uk/careers)

Art & Design

Health & Social Care

Welding & Fabrication

Construction

Digital Skills

Childcare & Education

Catering

Supported Learning (SEND)

Business

# Opening doors for you

Our full-time study programmes enable you to dive straight into your vocational area of choice after leaving school.

**Explore our full-time courses for school leavers at [northumberlandskills.co.uk](http://northumberlandskills.co.uk) and enrol now for September.**



Delivering on behalf of

