

Appendix D – Intervention Summary Drawings

(Sheets 301 to 305)

ISO A1 594mm x 841mm
 Approved:
 Checked:
 Designer: CH
 Project Management initials:
 Filename: I:\UK\252\F003\UK\252\F003-V1\PROJECTS\999999\TRAFFIC\ROAD SAFETY\STUDIES\2014\DS-10-NORTHUMBERLAND ROAD SAFETY\ACAD\20-SHEETS\60289709-M006-TRA_DR_301-304\60289709-M006-TRA_DR_301-304.DWG
 Last saved by: MCKENNA P (2015-02-13) Last Plotted: 2015-02-18
 Recycled Content Paper

5.2.4 Section 5 - Bowchester to Coldgatehaugh

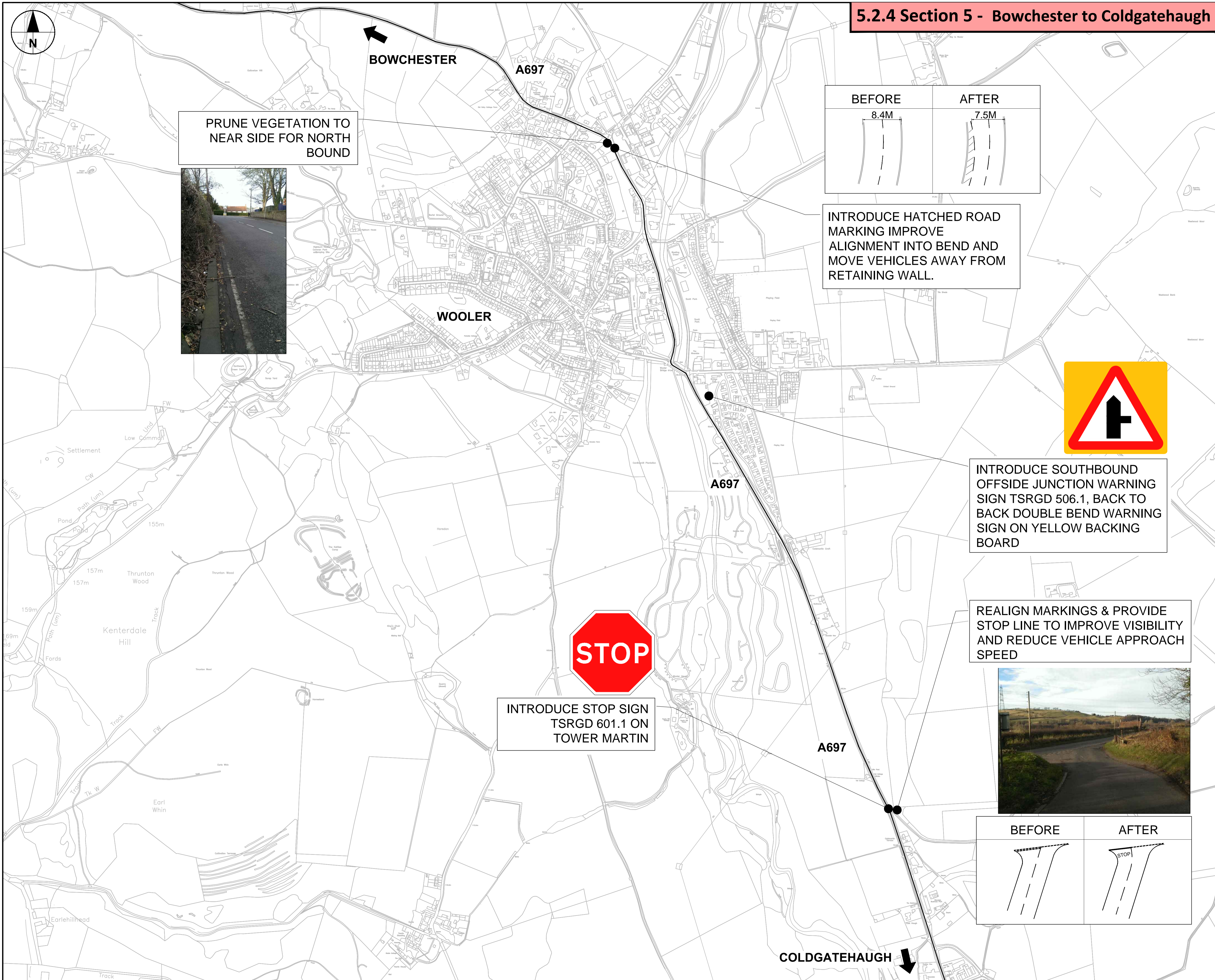


PROJECT
 NEPO Lot 5 Framework
 A697 Road Safety Study

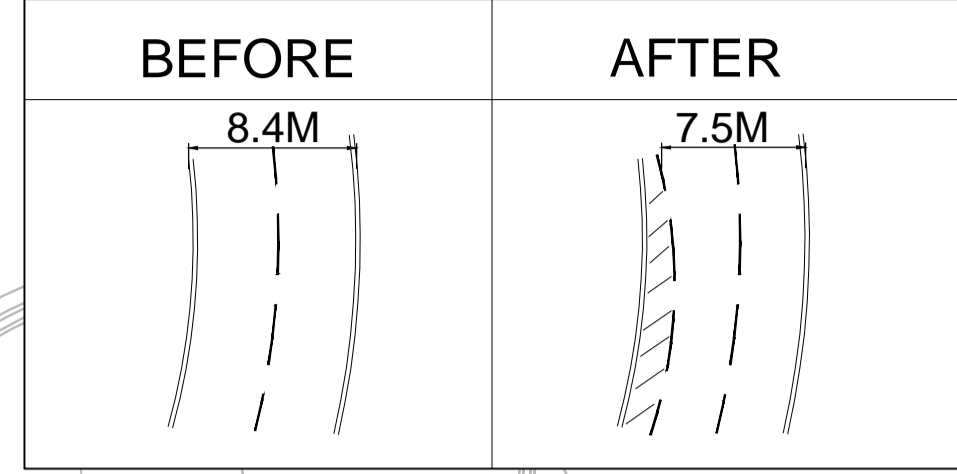
CLIENT

 Northumberland County Council
 COUNTY HALL
 NORTHUMBERLAND
 NE61 2EF

CONSULTANT
 AECOM
 First Floor, One Trinity Gardens
 Quayside,
 Newcastle upon Tyne, NE1 2HF
 +44 (0)191 224 6500 tel +44 (0)191 224 6599 fax
 www.aecom.com



PRUNE VEGETATION TO NEAR SIDE FOR NORTH BOUND



INTRODUCE HATCHED ROAD MARKING IMPROVE ALIGNMENT INTO BEND AND MOVE VEHICLES AWAY FROM RETAINING WALL.

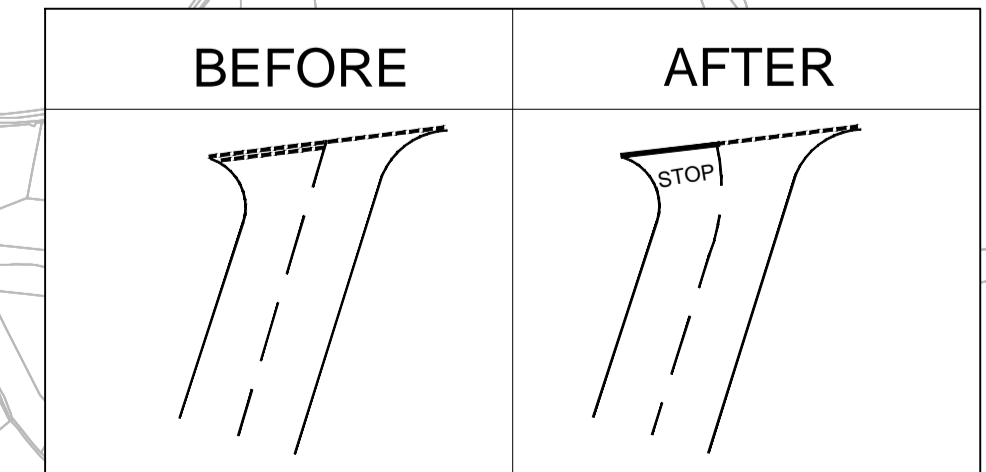


INTRODUCE SOUTHBOUND OFFSIDE JUNCTION WARNING SIGN TSRGD 506.1, BACK TO BACK DOUBLE BEND WARNING SIGN ON YELLOW BACKING BOARD

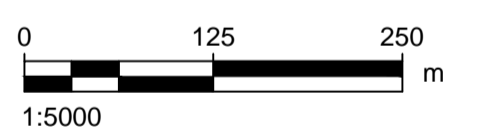


INTRODUCE STOP SIGN TSRGD 601.1 ON TOWER MARTIN

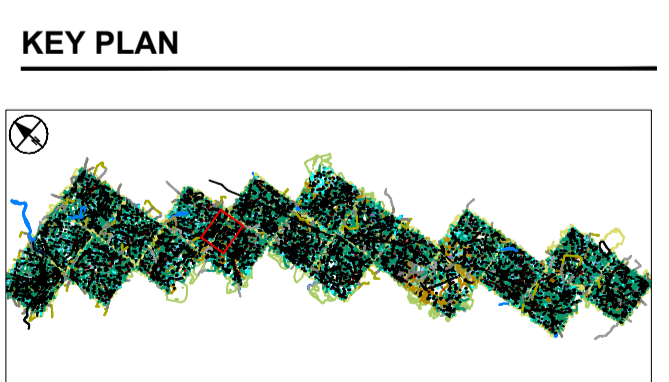
REALIGN MARKINGS & PROVIDE STOP LINE TO IMPROVE VISIBILITY AND REDUCE VEHICLE APPROACH SPEED



FINAL

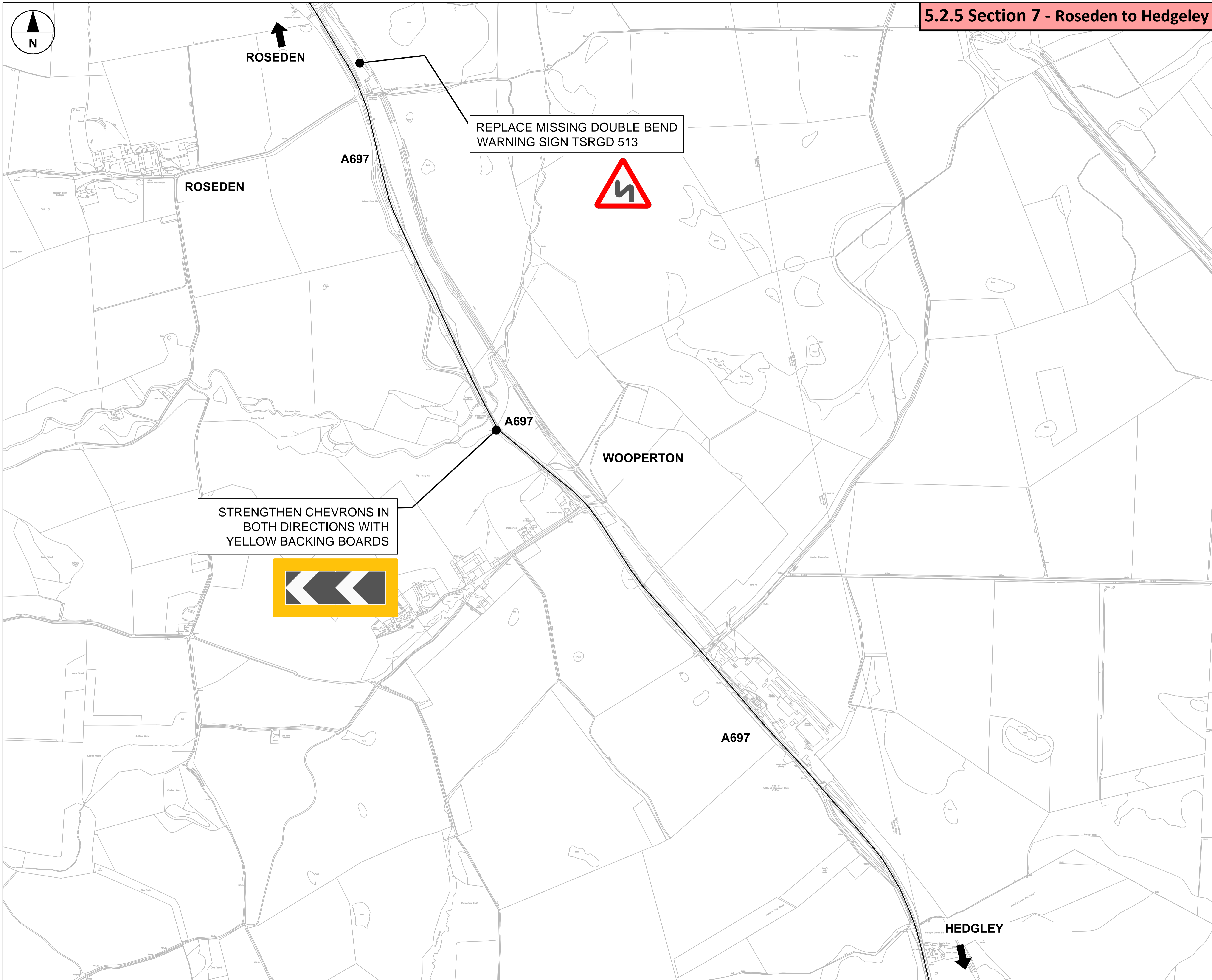


| ISSUE/REVISION | | |
|----------------|------|-------------|
| I/R | DATE | DESCRIPTION |
| | | |
| | | |
| | | |
| | | |



PROJECT NUMBER
 60289709
SHEET TITLE
 ROAD SAFETY STUDY
 OPTION REVIEW 5.2.4
 SHEET 4 of 10
SHEET NUMBER
 60289709-M006-TRA_DR_304

ISO A1 594mm x 841mm
 Approved:
 Checked:
 Designer: PM
 Project Management Initials: DR_305-31060289709-M006-TRA_DR_305-31060289709-M006-TRA_DR_305-31060289709-M006-TRA
 Last saved by: H:\USSENH\2015-02-13_ Last Plotted: 2015-02-13
 Filename: I:\E\A\CONNECT\COM\EU\PROJECT\VOL\UK\DS2-TP\PROJECTS\999999\SPECULATIVE\TRAFFIC\ROAD SAFETY\STUDIES\2014-LDS-10-NORTHUMBERLAND ROAD SAFETY\ACAD\20-SHEETS\60289709-M006-TRA_DR_305-31060289709-M006-TRA



5.2.5 Section 7 - Roseden to Hedgeley



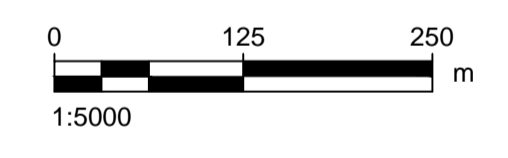
PROJECT
 NEPO Lot 5 Framework
 A697 Road Safety Study

CLIENT
Northumberland
 Northumberland County Council
 COUNTY HALL
 NORTHUMBERLAND
 NE61 2EF

CONSULTANT
AECOM
 First Floor, One Trinity Gardens
 Quayside,
 Newcastle upon Tyne, NE1 2HF
 +44 (0)191 224 6500 tel +44 (0)191 224 6599 fax
 www.aecom.com

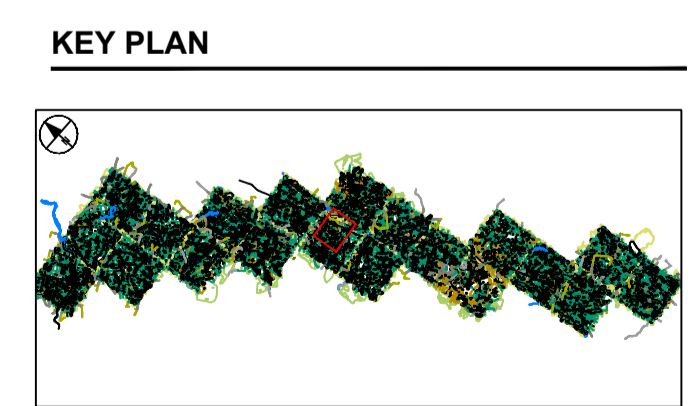
- NOTES**
1. REPLACE DIRECTION SIGNS FOR ROSEDEN / RODDAM.
 2. UPDATE BLUE BORDERED SIGNS TO CURRENT STANDARDS.

FINAL



ISSUE/REVISION

| I/R | DATE | DESCRIPTION |
|-----|------|-------------|
| | | |
| | | |
| | | |



PROJECT NUMBER
 60289709

SHEET TITLE
 ROAD SAFETY STUDY
 OPTION REVIEW 5.2.5
 SHEET 5 of 10

SHEET NUMBER
 60289709-M006-TRA_DR_305