

Northumberland Local Plan

Spring 2018 Consultation Feedback Report

May 2018

If you need this information in Large Print, Braille, Audio or in another format or language please contact us:

Telephone 0345 600 6400

Typetalk 018001 0345 600 6400

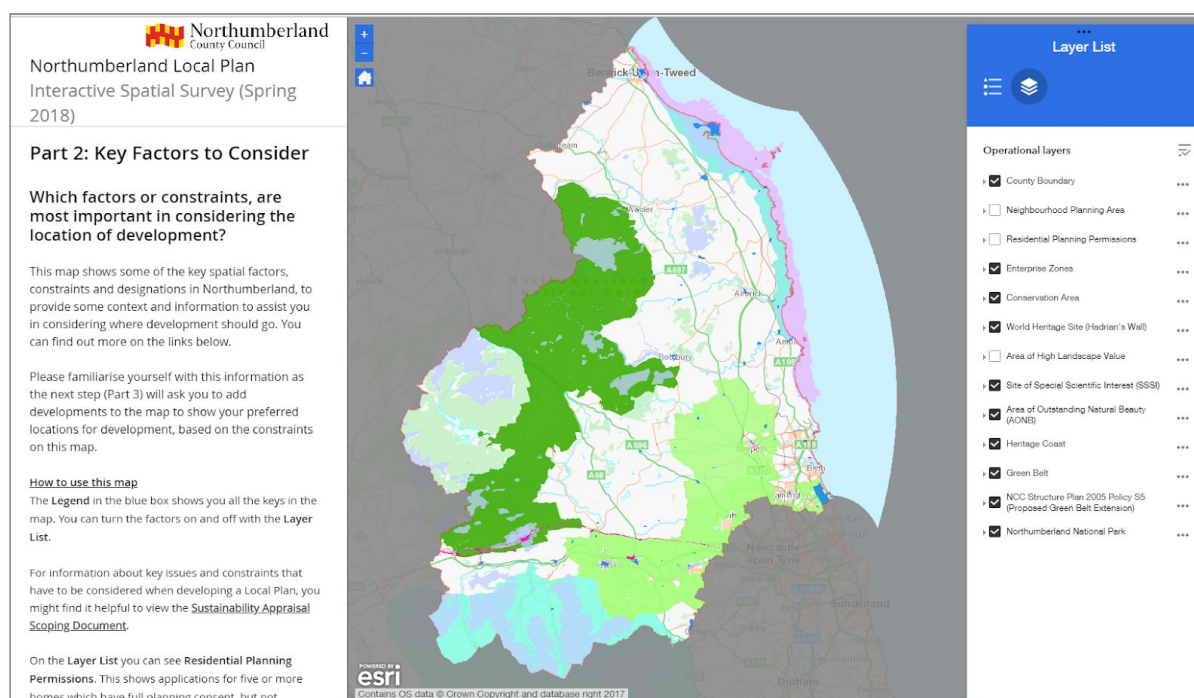
1. Introduction

- 1.1. Northumberland County Council is currently preparing a new Local Plan for the County, which will guide future development and planning decisions up to 2036. In Spring 2018, a consultation was undertaken to capture people's high level views on preferred strategic locations for development and the big issues that should be tackled in the Local Plan.
- 1.2. This report has been prepared to provide a summary of the responses received in reply to the consultation. It also provides an overview of the purpose of the consultation, its content, the numbers of responses received and the next steps.

2. Overview of the Consultation

- 2.1. The consultation period began on 28 March 2018 and ended on 02 May 2018. It was initially publicised through press releases, social media, the Council's website and the 'Northumberland News' magazine. In addition emails and letters were sent to all individual and organisations registered on the database for the Local Plan to notify them of this consultation. Young people were also engaged with through the Northumberland Youth Cabinet, Northumberland Youth Parliament and Voices Making Choices (Northumberland's Children in Care Council).
- 2.2. The consultation took the format of an interactive online spatial survey, which was also available to complete and return in paper form. The format of the consultation is described below. Some screenshots from the online version of the spatial survey are shown in Appendix A to this report and a copy of the paper survey form is shown in Appendix B. A set of frequently asked questions (FAQs) and guidance notes on how to use the online spatial survey were also produced and made available during the consultation and these are presented in Appendix C and Appendix D respectively.
- 2.3. Those taking part in the consultation were shown a map of Northumberland with a number of important spatial factors that could influence the location of future housing and employment development (see Figure 2.1). This included a number of planning and environmental designations, examples of which include Green Belt and Areas of Outstanding Natural Beauty.

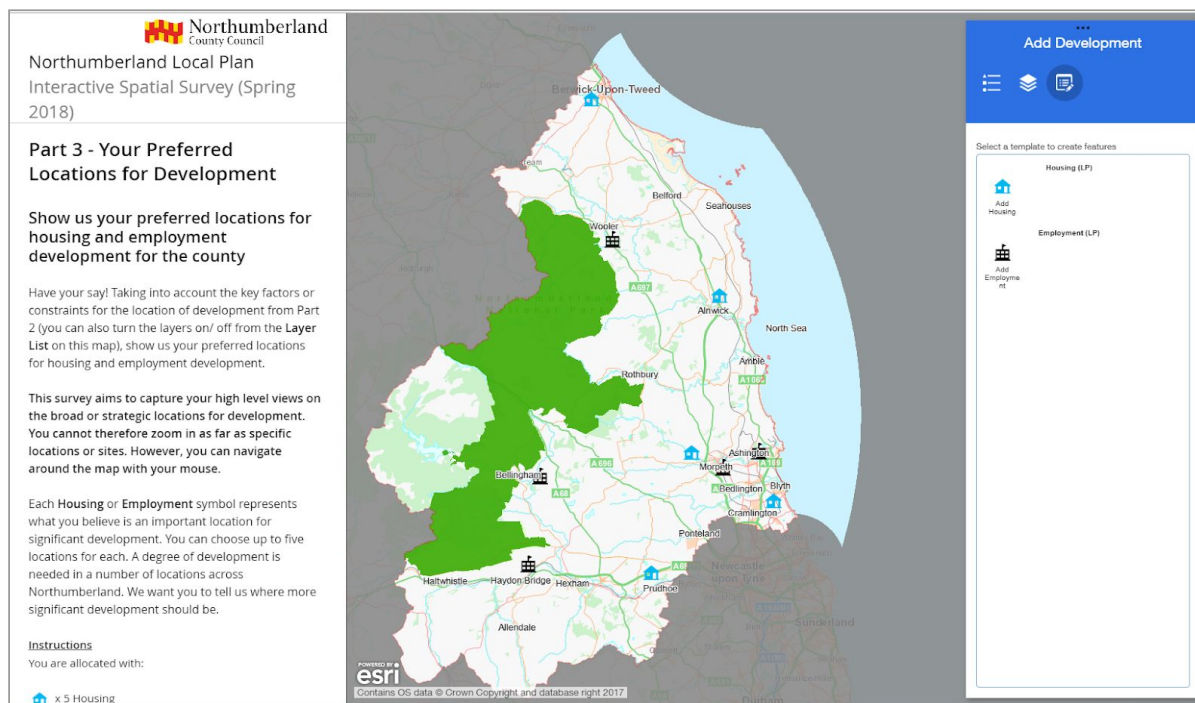
Figure 2.1: Map of Northumberland showing some of the spatial factors to consider



- 2.4. Those taking part were then shown a second map of Northumberland and asked to add symbols on to the map to show their broad preferred locations

for housing development and their broad preferred locations for employment development (see Figure 2.2). Each respondent could add up to five locations on the map for housing development and up to five locations for employment development.

Figure 2.2: Map of Northumberland where respondents were asked to add their preferred locations for housing and employment development



2.5. The consultation also asked those taking part about the key issues the Northumberland Local Plan needs to consider. It listed a number of issues shown below and asked those taking part in the survey to tick the issues that they thought were the most important to them.

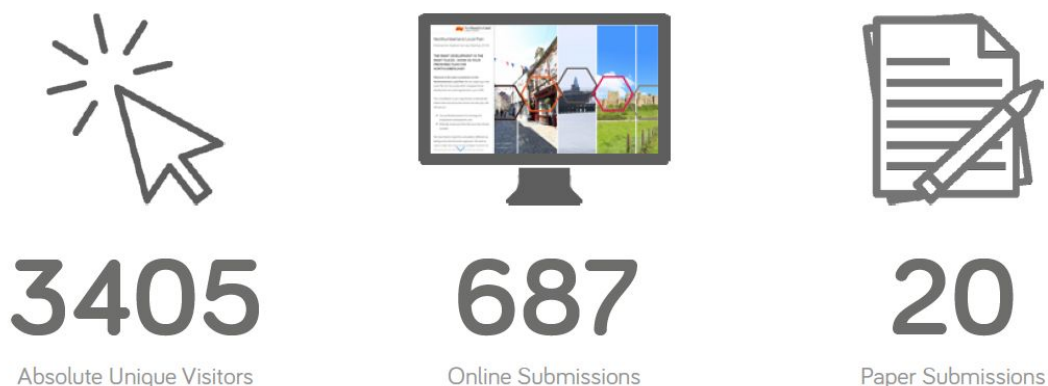
- Opportunities for employment
- Access to education and training opportunities
- Enough homes to meet needs
- Decent, affordable homes for everyone
- Protection of our natural environment
- Protection of our heritage and culture
- Transport and movement around the County and beyond
- Broadband and mobile phone communications
- Health and well-being of current and future residents
- The impacts of climate change
- How we use our natural resources
- The quality and design of new built environments

2.6. The survey also provided an opportunity to suggest any other key issues that the Northumberland Local Plan needs to consider and which were not included in the list above.

3. Consultation Responses

Number of Responses

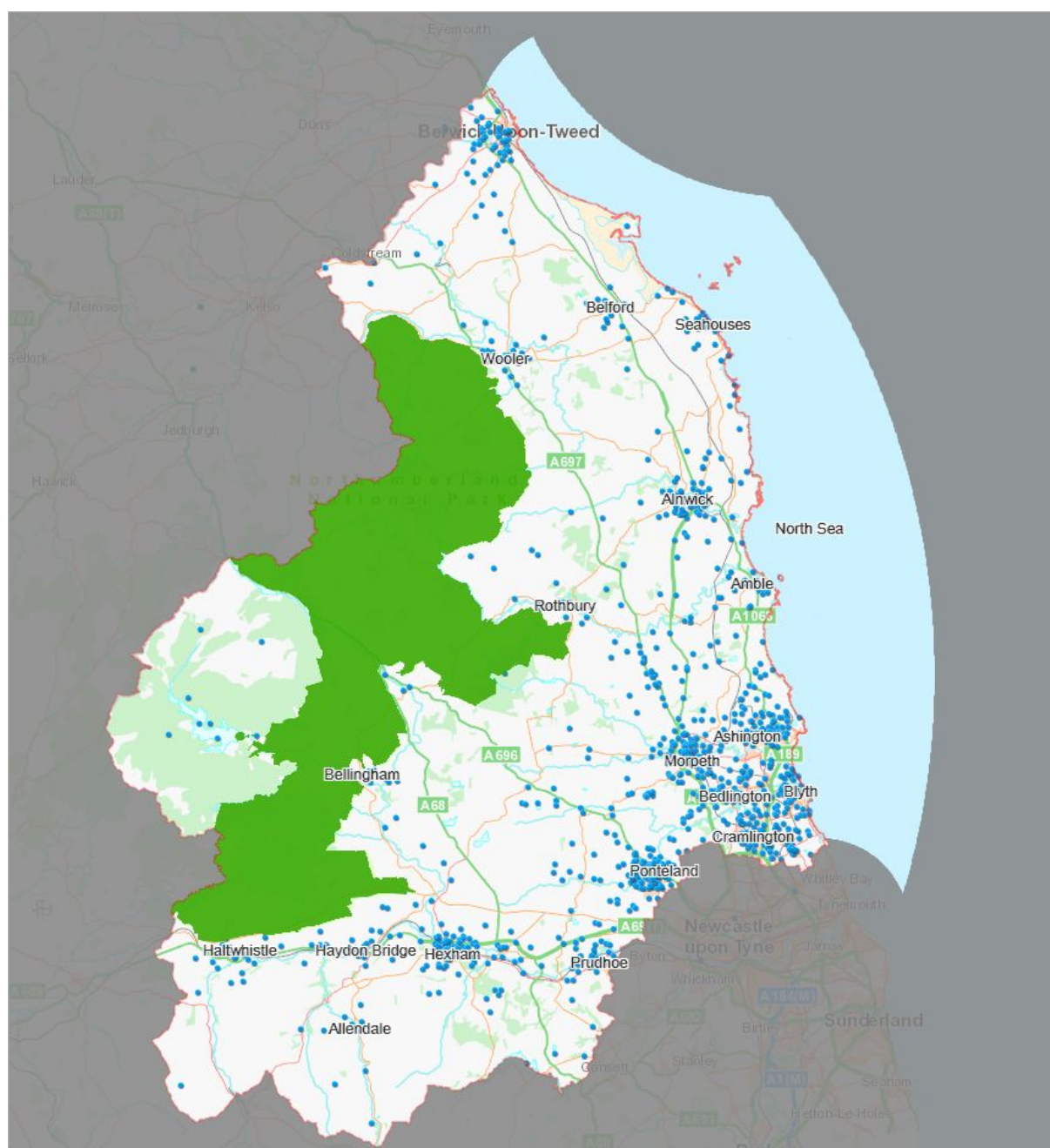
- 3.1. Over 700 responses were received in reply to the consultation, with 687 online submissions and 20 paper submissions. The usage statistics from the consultation website also show there were 3,405 unique visits to it during the consultation period.



Locations for Housing and Employment Development

- 3.2. In terms of the preferred strategic locations for housing development, a total of 1,287 point locations were entered onto the relevant map by those responding to the consultation and for employment development a total of 1,044 were entered onto the relevant map by those responding to the consultation.
- 3.3. Figure 3.1 and Figure 3.3 show the point locations that were placed onto the map of Northumberland by those responding to the consultation for housing and employment respectively. Figure 3.2 and Figure 3.4 use the point locations in order to produce a 'heat map' which helps to illustrate the patterns and where there are clusters of suggested locations for development.
- 3.4. These figures show that there is a clustering of preferred locations for both housing and employment development in the main towns and service centres in Northumberland with the highest numbers of preferred locations in the south of the County.

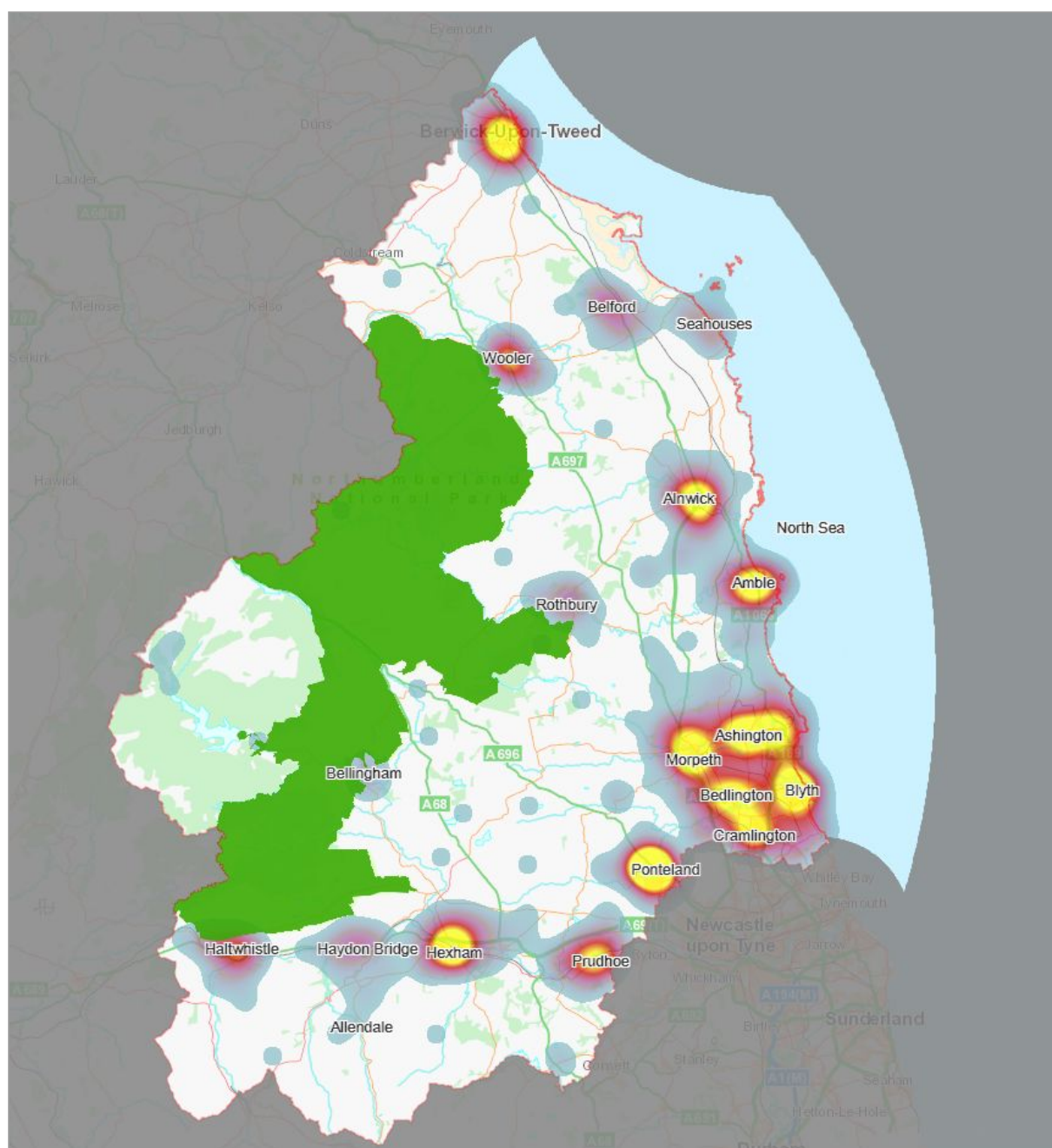
Figure 3.1: Map showing the locations added by those responding to the survey to indicate preferred locations for housing development



This map illustrates the distribution of the Great North Sea Drift in Northumberland. The drift is shown as a green-shaded area, primarily concentrated in the central and western parts of the county. Key locations labeled on the map include Belford, Wooler, Rothbury, Bellingham, Haltwhistle, Haydon Bridge, Hexham, Allendale, Belford, Seahouses, Anwick, Amble, Ashington, Morpeth, Bedlington, Blyth, Cramlington, Ponteland, Prudhoe, and Newcastle upon Tyne. The North Sea is to the east, and the Northumberland National Park is to the west.

This map of Northumberland displays the distribution of 1000+ black dots, representing bird sightings. The dots are densely clustered in the coastal regions, particularly around Ashington, Blyth, and the Blyth estuary. Other notable clusters are found near Alnwick, Belford, and the southern coast. The map also shows major roads (A696, A697, A698, A699, A1066), the North Sea to the east, and the Northumberland National Park to the west. Key towns labeled include Bellingham, Alnwick, Ashington, Blyth, and Belford.

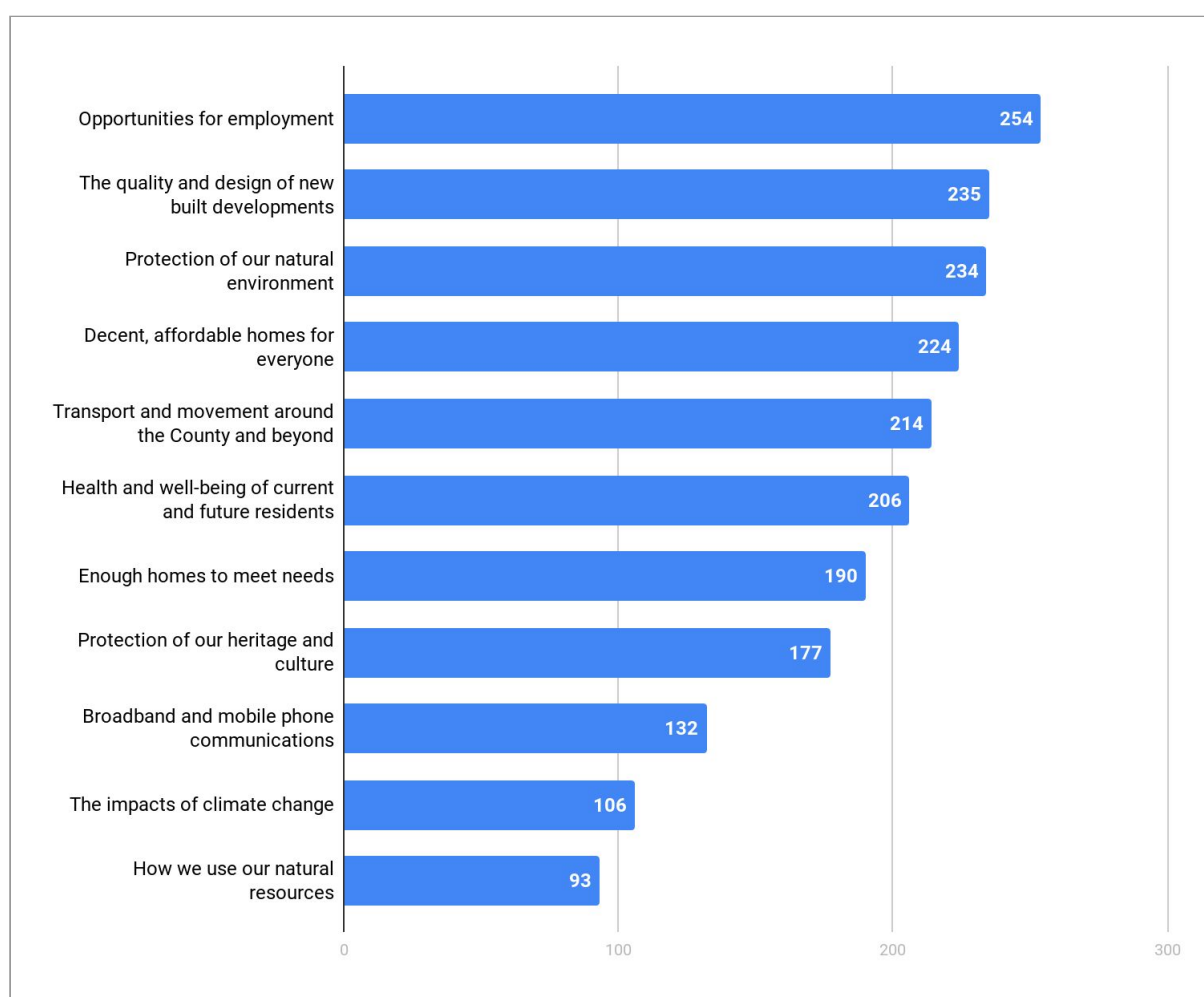
Figure 3.4: 'Heat Map' showing the preferred locations for economic development by those responding to the survey



Key Issues for the Local Plan to Consider

- 3.5. The consultation survey identified twelve key issues that the Northumberland Local Plan should consider and those responding were asked to select the issues that they considered to be the most important for the Local Plan to consider.
- 3.6. Responses were received from 403 individuals on this part of the survey and a summary of the results are provided in Figure 3.5. The issues that received the highest number of selections in the responses were:
- Opportunities for employment;
 - The quality and design of new built developments;
 - Protection of our natural environment; and
 - Decent, affordable homes for everyone.

Figure 3.5: Chart showing the number of responses for each key issue



- 3.7. The survey also provided an opportunity to provide comments on any other key issues that were not listed. A wide range of issues were raised in the responses received. Some of the matters raised expanded on the issues that were listed in the consultation, some of the responses expanded on the points

above and a number overlap with them. The comments are summarised below:

- Housing
 - Number of new dwellings in particular settlements and Northumberland as a whole;
 - Second and holiday homes, including impact of these on communities;
 - Housing types, including the availability of bungalows and smaller houses;
 - Availability of housing for younger people;
 - Suitability of housing for older people;
 - Self-build housing;
 - Housing to meet local needs; and
 - Availability and provision of housing in locations where people want to live.
- Economy, including employment, retail and tourism
 - Provision of employment opportunities in general;
 - Availability of land for employment development;
 - Offices and workspace for small businesses and self-employed people;
 - Town centres and need for regeneration on some settlements;
 - Retail provision in particular settlements; and
 - Tourism and the opportunities arising from this.
- Rural growth
 - Rural housing and jobs;
 - Support for rural communities and jobs; and
 - Support for rural communities and services.
- Infrastructure
 - Impact of development on a range of existing infrastructure, including roads, transport, healthcare and education;
 - Access to education, healthcare and leisure facilities;
 - School places
 - Potential of some development to support schools and other community facilities, particularly in rural areas; and
 - Protection of a range of community facilities, including pubs, village halls, leisure facilities, healthcare and schools.
- Transport and connectivity
 - Transport links both within the County and to places outside of the County, including for employment, healthcare and leisure;
 - Car parking provision, particularly in town centres;
 - Impacts of traffic generation, including on pollution and air quality;
 - Reducing car usage / reliance on private car;

- Encouraging sustainable transport; and
- Reducing need to travel.
- Environment
 - Protection of and access to open and green spaces;
 - Impact of development on wildlife;
 - Impact of development on landscape;
 - Impact of development on historic environment;
 - Pressure on agricultural land;
 - Waste and recycling; and
 - Flooding.
- Green Belt, protection of the countryside and prioritising the use of previously developed land in existing built up areas.
- Climate change - adaptation and mitigation.
- New settlements, including both support and opposition to 'garden villages' and the Dissington Garden Village proposal.
- Avoiding the 'overdevelopment' of some settlements.
- Design
 - Quality of design; and
 - Promotion of exemplar development.
- Neighbourhood planning
 - Support for neighbourhood planning; and
 - Relationship between existing and emerging neighbourhood plans and the Local Plan, including where there are housing allocations and settlement boundaries.
- Social and economic inequality.
- Viability and delivery of development.

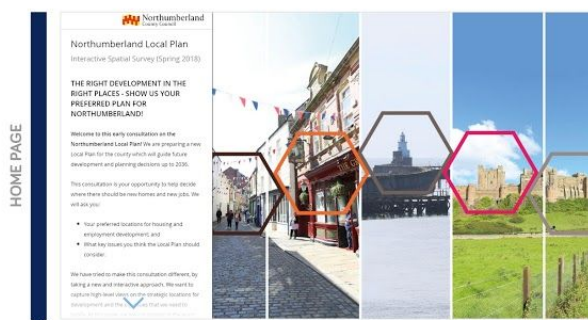
4. Next Steps

- 4.1. This consultation has provided some initial feedback on the big issues that the Local Plan for Northumberland should consider and captured high-level views on the broad strategic locations for both housing development and employment development.
- 4.2. The findings will be used alongside various other evidence base studies to help to inform a draft of the Northumberland Local Plan, which will be subject to public consultation during July and August 2018.

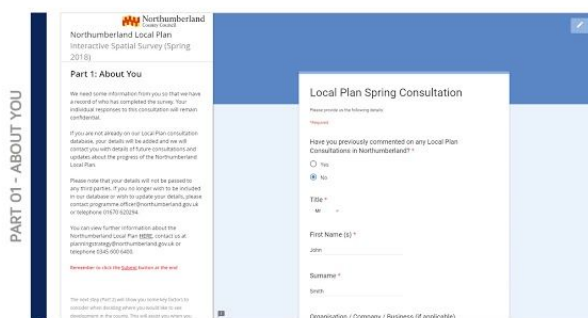
Appendix A:

Screenshots of the Online Spatial Survey

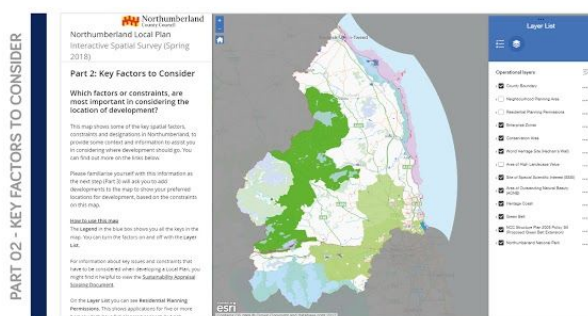
A number of screenshots from the online version of the spatial survey are provided below:



The home page provided general information on the purpose of the consultation and the Local Plan.



Part 01 required respondents to enter some personal information so we have a record of who has completed the survey. The information will be used to inform them of future consultations and provide updates on the Local Plan.



Part 02 provided respondents with information on the key spatial factors, constraints and designations in Northumberland, on an interactive map. It aimed to provide them with some context and information to complete the next task.



Part 03 asked respondents to indicate their preferred broad locations for housing and employment. To do this, they were required to place their 5 preferred housing and 5 preferred employment locations on the map.

PART 04 - KEY ISSUES

Northumberland Local Plan Interactive Spatial Survey (Spring 2018)

Part 4: Key Issues

Tell us the key issues that you think the Local Plan should consider

We want to know what you think are the key issues that the Northumberland Local Plan needs to consider. Please select the issues that you think are most important for the Local Plan to address.

[Remember to click the SUBMIT button at the end.](#)

[NEXT STEP](#)

Local Plan Spring Consultation

Please tick the key issues that you think are most important to plan?

- ☐ Opportunities for employment
- ☐ Access to education and training opportunities
- ☐ Brought homes to meet needs
- ☒ Decent, affordable homes for everyone
- ☐ Protection of our natural environment
- ☐ Protection of our heritage and culture
- ☐ Transport and movement around the county and beyond
- ☒ Broadband and mobile phone communications
- ☐ Health and well-being of current and future residents
- ☐ The impacts of climate change
- ☐ How we use our natural resources
- ☒ The quality and design of new built developments

Part 04 of the survey sought to understand the key issues that the Local Plan should consider. 12 key issues were presented and respondents were asked to indicate the issues they considered to be most important. Respondent could also add a short comment at the end to identify any other key issues that were important but not listed.

PART 05 - FEEDBACKS

Northumberland Local Plan Interactive Spatial Survey (Spring 2018)

Thank You!


Thank you for your input, which will help shape the future of Northumberland. Although your individual responses will remain confidential, we will provide overall feedback and analysis on where respondents feel development should go and what issues there are the key issues that the plan should consider. This will be provided alongside the Summer Consultation on a Draft Northumberland Local Plan.

We value your feedback and want to know about your experience on this Interactive Spatial Survey for the Local Plan. Please share with us.


You can now exit the Consultation Portal.

Local Plan Spring Consultation Feedback

What did you think of this Online Spatial Survey for the Local Plan?



☐ I like it



☐ I dislike it

[Submit](#)

This form was created using Northumberland County Council Report Builder. Privacy of Service | Accessibility Policy

Google Forms

The final page asked for feedback on respondents' experience on this Online Spatial Survey and its approach on the Local Plan consultation, before exiting the platform.

Appendix B: Consultation Materials

Paper Version of the Spatial Survey



INTERACTIVE SPATIAL SURVEY (PAPER VERSION)

THE RIGHT DEVELOPMENT IN THE RIGHT PLACES: SHOW US YOUR PREFERRED PLAN FOR NORTHUMBERLAND!

Welcome to this early consultation on the Northumberland Local Plan! We are preparing a new Local Plan for the county which will guide future development and planning decisions up to 2036.

This consultation is your opportunity to help decide where there should be new homes and new jobs. We will ask you:

- Your preferred locations for housing and employment development; and
- What key issues you think the Local Plan should consider.

We want to capture high-level views on the strategic locations for development and the big issues that we need to tackle. At this stage we are not looking at the exact boundary of a development site or the detailed wording of a policy. We will feed your responses into a more detailed 'Draft Northumberland Local Plan' and consult on this in the Summer. At that stage you will be able to make more detailed comments.

We have tried to make this consultation different, by taking a new and interactive approach with the introduction of an Interactive Online Spatial Survey. For the best user experiences, we would recommend and encourage you to use it via <http://bit.ly/NCC-LP-Spatial-Survey> to submit your comments.

Other work on the Local Plan is already well underway, including updating the existing background evidence base as well as the production of new material. You can view further information about the Northumberland Local Plan at <http://www.northumberland.gov.uk/localplan>.

This consultation is from **28 March** to **02 May 2018**. All submission of this consultation must be returned on or before **5PM on Wednesday 02 May 2018**.

Before you start the survey it will be helpful to read the [Frequently Asked Questions \(FAQ\)](#) for this consultation. If you require any further information or guidance, please contact the Planning Policy Team at planningstrategy@northumberland.gov.uk.

Which factors or constraints, are most important in considering the location of development?

This map shows some of the key spatial factors, constraints and designations in Northumberland, to provide some context and information to assist you in considering where development should go.

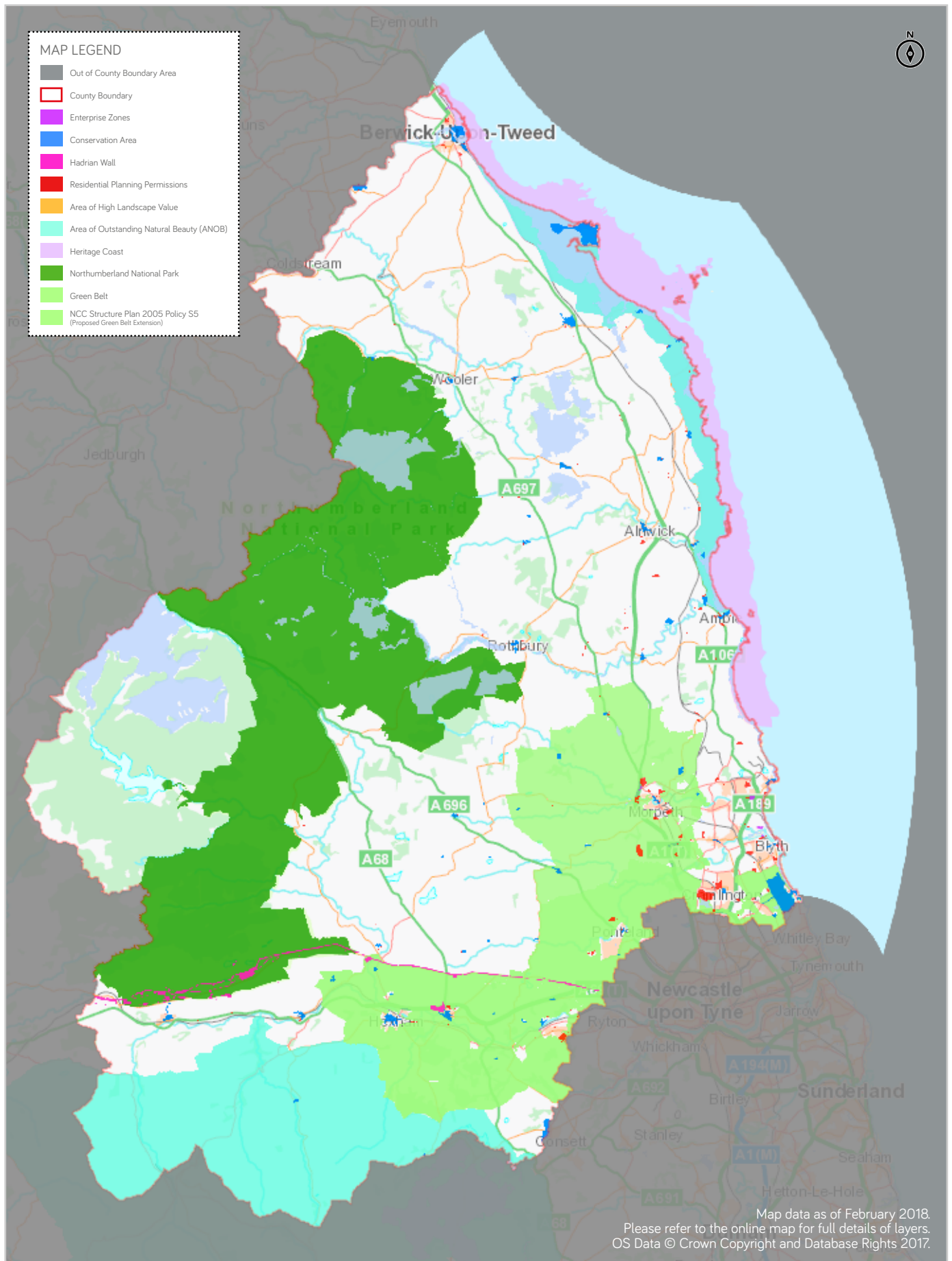
Please familiarise yourself with this information as the next step (Part 02) will ask you to add developments to the map to show your preferred locations for development, based on the constraints on this map.

The content of the key factors or constraints data provided on the adjacent map is determined by the A4 paper size. For more details on each factor, please use the Online Interactive Constraint Map.

This section is optimised with the Online Interactive Constraint Map for the best user experience. You will be able to zoom in and out, find out more information and see all detailed factors all in one map digitally. To use all these functionalities and to view the full context of the map, please visit <http://bit.ly/NCC-LP-CMap>.

Please note that the Council does not control planning within the Northumberland National Park area. If you have any questions, you can view the [Frequently Asked Questions \(FAQ\)](#) for this consultation.

FACTORS AND CONSTRAINTS MAP



Show us your preferred locations for housing and employment development for the county

This survey aims to capture your high level views on the broad or strategic locations for development, and we are not looking at detailed areas and boundaries of development sites.

Have your say! Taking into account the key factors or constraints for the location of development from the previous map (Part 01), show us your preferred locations for housing and employment.

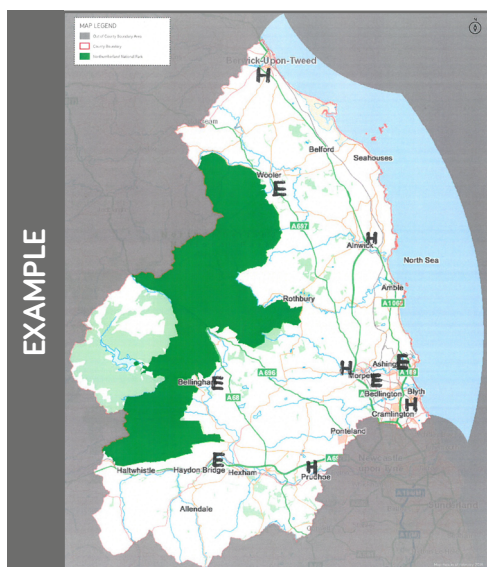
INSTRUCTIONS

- Use the 'H' symbol, mark **five** housing development on the map.
- Use the 'E' symbol, mark **five** employment development on the map.

Each **Housing** or **Employment** symbol represents what you believe is an important location for significant development. You can choose up to five locations for each. A degree of development is needed in a number of locations across Northumberland. We want you to tell us where more significant development should be.

Please note that we can only take account of suggested locations within Northumberland. Northumberland National Park is not within our boundary for planning purposes. If you have any questions, you can view the [Frequently Asked Questions \(FAQ\)](#) for this consultation.

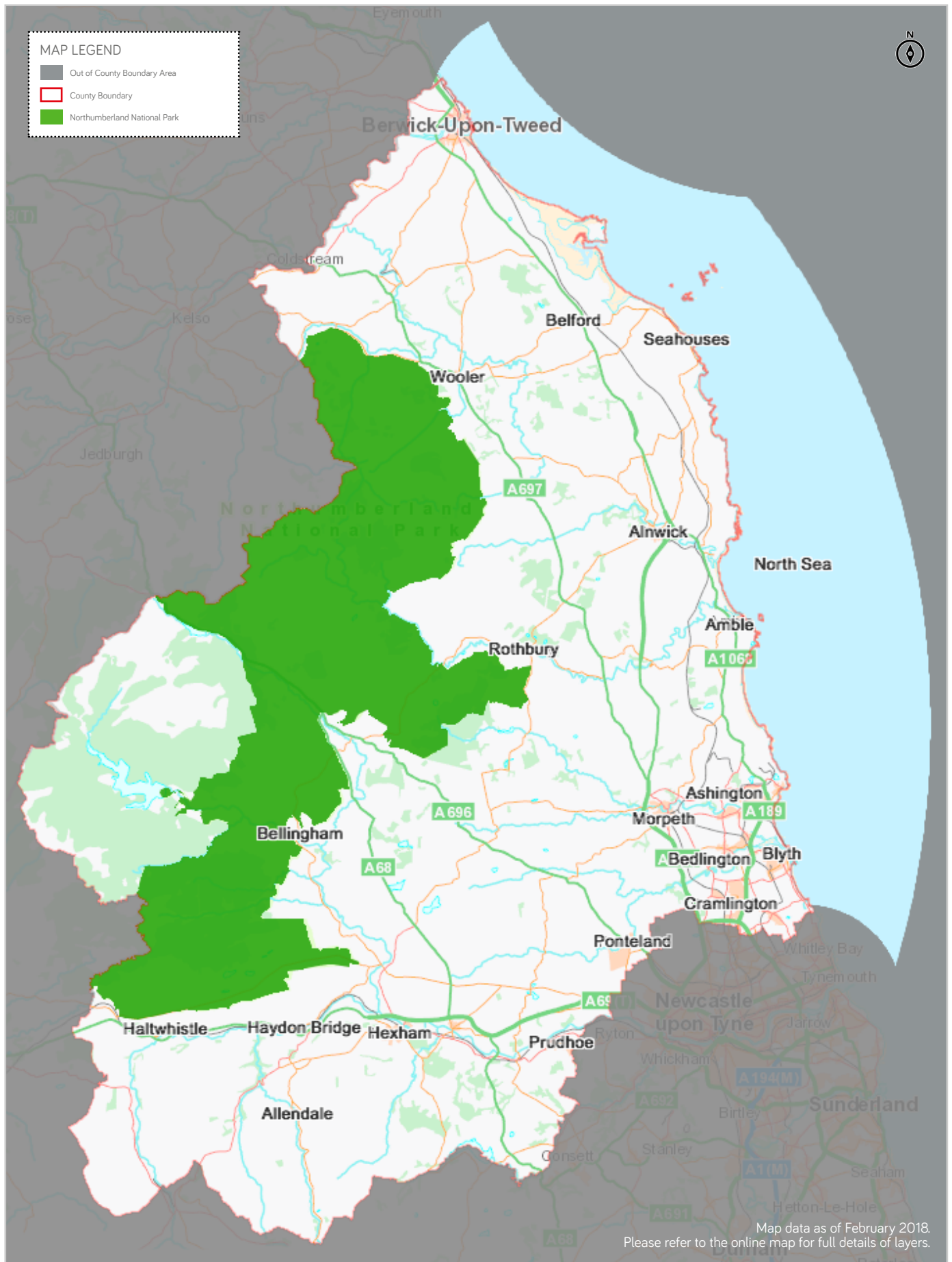
This section is optimised to be interactive and engaging with the Online Interactive Map. For best user experience, we would recommend and encourage you to use the Online Spatial Survey via <http://bit.ly/NCC-LP-Spatial-Survey>.



EXAMPLE

This is an example of how a completed preferred locations map could look, after marking five housing development and five employment development symbols.

MARK YOUR PREFERRED LOCATIONS FOR DEVELOPMENT BELOW



Tell us the key issues that you think the Local Plan should consider

We want to know what you think are the key issues that the Northumberland Local Plan needs to consider.

Please tick the key issues that you think are most important to you below:

- ☐ Opportunities for employment
- ☐ Access to education and training opportunities
- ☐ Enough homes to meet needs
- ☐ Decent, affordable homes for everyone
- ☐ Protection of our natural environment
- ☐ Protection of our heritage and culture
- ☐ Transport and movement around the county and beyond
- ☐ Broadband and mobile phone communications
- ☐ Health and well-being of current and future residents
- ☐ The impacts of climate change
- ☐ How we use our natural resources
- ☐ The quality and design of new built developments

Do we need to consider any other key issues? Please comment in the box below:

We need some information from you so that we have a record of who has completed the survey. Your individual responses to this consultation will remain confidential. If you are not already on our Local Plan consultation database, your details will be added and we will contact you with details of future consultations and updates about the progress of the Local Plan.

01. Have you previously commented on any Local Plan Consultations?

(including those on the Northumberland Core Strategy)

☐ Yes ☐ No

02. Your title

☐ Miss ☐ Mrs ☐ Ms ☐ Mr ☐ Mx ☐ Dr ☐ Rev ☐ Prof

03. Your first name(s)

04. Your surname

05. Organisation / Company / Business (if applicable)

06. Your full address

Postcode

07. Your email address

08. Your phone number

Please note that your details will not be passed to any third parties. If you no longer wish to be included in our database or wish to update your details, please contact programme.officer@northumberland.gov.uk or telephone 01670 620 294.

THANK YOU!

Thank you for your input, which will help shape the future of Northumberland.

Although your individual responses will remain confidential, we will provide overall feedback and analysis on where respondents said development should go and what people think are the key issues that the plan should consider. This will be provided alongside the Summer Consultation on a Draft Northumberland Local Plan.

It is requested that no additional written information is submitted in response to this consultation, other than that requested in the consultation survey. There will be an opportunity to comment on detailed sites for development and the wording of policies in Summer 2018 when we consult on a draft of the Local Plan.

HOW TO SUBMIT THIS PAPER SURVEY?

Please return the completed survey to the Planning Policy Team with these methods:

- ✉ Planning Policy, Northumberland County Council
County Hall, Morpeth, Northumberland NE61 2EF
- @ planningstrategy@northumberland.gov.uk

**Printed copy of this survey must be submitted and received by us no later than
5PM on Wednesday 02 May 2018.**



- ✉ Planning Policy
Northumberland County Council
County Hall, Morpeth
Northumberland NE61 2EF
- ☎ 0345 600 6400
- @ planningstrategy@northumberland.gov.uk
- 🌐 www.northumberland.gov.uk

Appendix C: Consultation Materials Frequently Asked Questions (FAQ)



FREQUENTLY ASKED QUESTIONS (FAQ)

These Frequently Asked Questions (FAQs) have been prepared to help answer some common queries regarding this Local Plan consultation and how to respond. It has been divided into three parts as follows.

We have also produced some additional guidance on using the Online Spatial Survey, which provides step-by-step instructions. This is available to download at <http://bit.ly/NCC-LP-Survey-Guide>.

GENERAL

01. What is the purpose of this new Local Plan consultation?
02. Who can submit a response in this consultation?
03. How has the consultation been publicised?
04. How do I respond to this consultation?
05. What is the deadline for responses to be received?
06. Where can I find additional information to help my submission?
07. What will happen next?
08. Who can I contact for further information?

SPATIAL SURVEY (ONLINE VERSION)

09. What internet browser can I use?
10. My Online Spatial Survey is not loading?
11. Why are some layers not showing on my interactive map?
12. How can I view details of the map layers?
13. How do I place my location choices on the map in Part 03 of the survey?
14. Can I place more than five preferred locations for housing and employment development, respectively, on the map in Part 03 of the survey?
15. Can I add comments after placing my selected choices on the map in Part 03 of the survey?

SPATIAL SURVEY (PAPER VERSION)

16. In Part 01 of the survey, is there a larger map showing the development constraints and designations?
17. How do I put my preferred locations on the map in Part 02?
18. Can I place more than five preferred locations for housing and employment development, respectively, on the map in Part 02 of the survey?
19. What is the deadline for responses to be received?
20. How do I submit my response to the consultation?



01. What is the purpose of this new Local Plan consultation?

[TOP](#)

The Council is currently preparing a new Local Plan for Northumberland, covering the period 2016 to 2036. The Local Plan will cover the whole of Northumberland, with the exception of the area of the Northumberland National Park.

At this early stage in the preparation of the new Local Plan, we want to capture high-level views on preferred strategic locations for development and the big issues that we need to tackle in the plan. We are not looking at the exact boundaries of development sites or the detailed wording of policies.

Your responses to this consultation will feed into a more detailed 'Draft Northumberland Local Plan', which will be open to consultation in Summer 2018. At that stage, you will be able to make more detailed comments.

02. Who can submit a response in this consultation?

[TOP](#)

Anyone can submit a response for this consultation. We would like to capture as many responses as possible and we welcome anyone who has an interest in Northumberland to participate in this consultation.

03. How has the consultation been publicised?

[TOP](#)

Emails and letters have been sent to all of those registered on our Local Plan database to notify them of this consultation. The database includes those who have submitted comments previously in response to a local plan consultation or have expressed an interest in receiving information regarding such consultations. The database includes a wide audience such as local residents, landowners, developers, businesses and other local interest groups. Parish and Town Councils and statutory bodies have also been notified.

The consultation has been publicised in the Council's magazine Northumberland News, via social media posts, press releases and on the Council's website at <http://www.northumberland.gov.uk>.

04. How do I respond to this consultation?

[TOP](#)

We recommend and encourage you to use the [Online Spatial Survey](#) to submit your response to this consultation. This method is interactive and provides for the best user experience.

Alternatively, a [printable version of the survey](#) is available to download from our website. These paper copies of the survey are accessible from our libraries or from the Planning Policy Team on request. This version of the survey can either be filled in electronically or scanned and returned by email to planningstrategy@northumberland.gov.uk, or returned to us by post to Planning Policy, Northumberland County Council, County Hall, Morpeth NE61 2EF.

It is requested that no additional written information is submitted in response to this consultation, other than that requested in the consultation survey. There will be an opportunity to comment on detailed sites for development and the wording of policies in Summer 2018 when we consult on a draft of the Local Plan.



05. What is the deadline for responses to be received?

[⬆ TOP](#)

All submissions (including electronic and paper submissions) must be returned no later than **5PM on Wednesday 02 May 2018.**

06. Where can I find additional information to help my submission?

[⬆ TOP](#)

Part 02 of the Online Spatial Survey and Part 01 of the Paper Spatial Survey should provide you with all the essential information you require to respond to this consultation. Should you require additional information about the Northumberland Local Plan, you can find this on the Council's website at <http://www.northumberland.gov.uk/localplan>. Wider evidence base studies, reports and data which support the Plan can also be viewed on the Council's website at <http://www.northumberland.gov.uk/Planning/Reports.aspx>.

07. What will happen next?

[⬆ TOP](#)

Following the consultation, we will provide some overall feedback and analysis on where respondents said development should go and what people think are the key issues that the plan should consider. This will be provided alongside the consultation on the Draft Northumberland Local Plan in Summer 2018. The timetable for the preparation of the Local Plan and consultation is set out in the published Local Development Scheme (November 2017).

08. Who can I contact for further information?

[⬆ TOP](#)

If you have any questions or would like further information, please contact the Planning Policy Team via email at planningstrategy@northumberland.gov.uk or by telephone on 0345 600 6400.



09. What internet browser can I use?

[^ TOP](#)

For the best performance when using the consultation portal, we recommend you to use the latest version of one of the internet browsers listed below:

- Chrome
- Firefox
- Safari
- Edge
- Internet Explorer 11 (Compatibility View is not supported)

10. My Online Spatial Survey is not loading?

[^ TOP](#)

If the Online Spatial Survey is not loading, try refreshing the page by pressing **Ctrl + F5** keys on your keyboard whilst on the webpage. This instruction will command your browser to force a cache refresh, and will guarantee a fresh content reload of the consultation portal.

If the problem persists, please view the [Guidance to the Online Spatial Survey](#) or contact us for further guidance. Alternatively, you can use the [paper version of the spatial survey](#) and follow the relevant instructions.

11. Why are some layers not showing on my interactive map?

[^ TOP](#)

Check that the layer you wish to view is ticked in the Legend on the right hand side of the map.

If the error message is showing some layers are not loading in the interactive map, you can try to relaunch the Online Spatial Survey by pressing **F5** key on your keyboard. If the problem remains, then please try the method in Question 10 or use a different web browser.

12. How can I view the details of the map layers?

[^ TOP](#)

On the Development Constraints Map (Part 02), you can zoom in and zoom out and click on the specific map layer and location to see further information about that constraint or designation. For more information about how to use these features on the online map, please view the [Guidance to the Online Spatial Survey](#).

13. How do I place my location choices on Part 03?

[^ TOP](#)

To start placing your preferred locations on the map of Northumberland, click on either the housing symbol or the employment symbol on the right side of the map, and then click on the location on the map where you would like to see development located.

You should repeat the above steps for each of your five choices for housing development and each of your five choices for employment development. Each time you add a symbol to the map, it will be saved automatically.

If you encounter any difficulties on this task, please view the [Guidance to the Online Spatial Survey](#) for more information. Alternatively, contact us for assistance.



14. Can I place more than five preferred locations for housing and employment development, respectively, on the map in Part 03 of the survey? [^ TOP](#)

No, only your first five choices will be recorded. You are allocated with five housing and five employment symbols to add to the map. Each housing or employment symbol represents what you believe is an important location for significant development. A degree of development is needed in a number of locations across Northumberland. We want you to tell us where more significant development should be.

Please note that even if you try to place more than your allotted five symbols on the map then, only your first five choices for each type of development will be recorded, and any additional placements will be deleted automatically in the database.

15. Can I add comments after placing my selected choices on the map in Part 03 of the survey? [^ TOP](#)

Yes, you could include a short comment (up to 100 characters in length) every time you place either a housing or employment symbol on the map. Please note that you cannot move a symbol or add a comment once you have positioned it on the map - so please think carefully about your preferred locations and any comments before placing a symbol on the map.

16. In Part 01 of the survey, is there a larger map showing the development constraints and designations? [^ TOP](#)

The size of the map on the paper version of the survey is determined by the size of the page.

If you use the online version of the map, which is available at <http://bit.ly/NCC-LP-CMap>, you will be able to zoom in and zoom out on the map and click on the designations to find out more information.

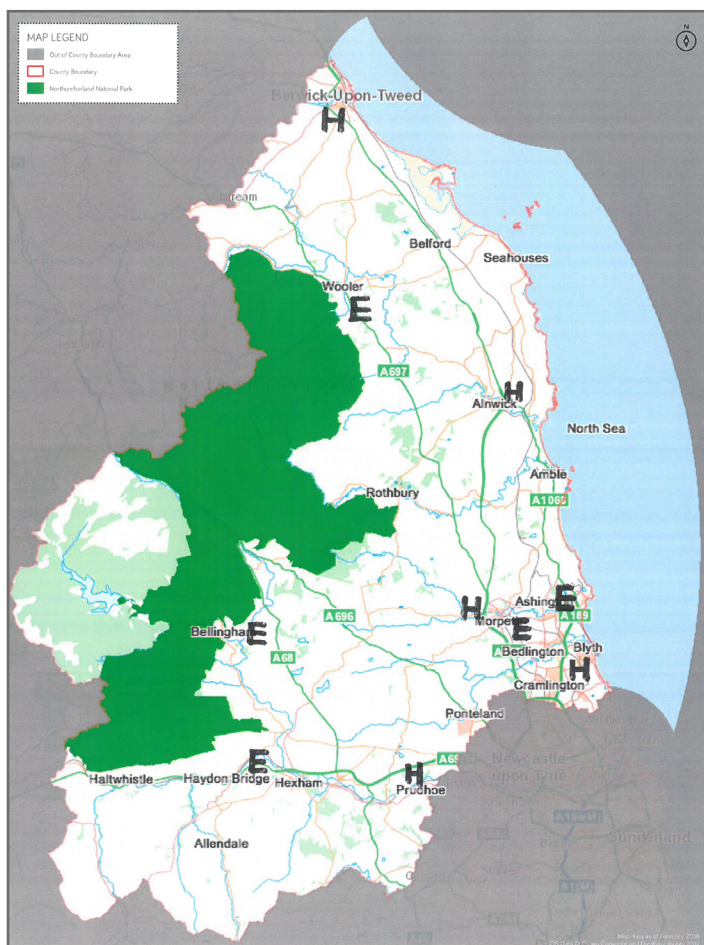
We also recommend and encourage you to use the [Online Spatial Survey](#) to submit your response as this provides for the best user experience.

17. How do I put my preferred locations on the map on Part 02? [^ TOP](#)

To indicate a preferred location for housing development, please mark an 'H' symbol on the map at the desired location. Repeat this step to show your five preferred locations for housing development.

To indicate a preferred location for employment development, please mark an 'E' on the map at the desired location. Repeat this step to show your five preferred locations for employment development.

An example of a completed map could look similar to this:



18. Can I place more than five preferred locations for housing and employment development, respectively, on the map in Part 02 of the survey? TOP

No. You are allocated with five housing and five employment symbols to add to the map. Each housing or employment symbol represents what you believe is an important location for significant development. A degree of development is needed in a number of locations across Northumberland. We want you to tell us where more significant development should be.

19. What is the deadline for responses to be received? TOP

All responses must be submitted and received by us no later than

5PM on Wednesday 02 May 2018.

20. How do I submit my response to the consultation? TOP

Completed survey forms can be returned either by post to Planning Policy, Northumberland County Council, County Hall, Morpeth NE61 2EF or by email to planningstrategy@northumberland.gov.uk.



- ✉ Planning Policy
Northumberland County Council
County Hall, Morpeth
Northumberland NE61 2EF
- ☎ 0345 600 6400
- @ planningstrategy@northumberland.gov.uk
- 🌐 www.northumberland.gov.uk

Appendix D: Consultation Materials

Guidance Notes for the Online Spatial Survey

GUIDANCE TO THE ONLINE SPATIAL SURVEY

Introduction

We are preparing a new Local Plan for Northumberland. The preparation of the Local Plan is currently at an early stage and at this stage we want to capture high-level views on preferred strategic locations for development and the big issues that we need to tackle in the plan. This consultation takes the form of an Interactive Online Spatial Survey, to collect initial views.

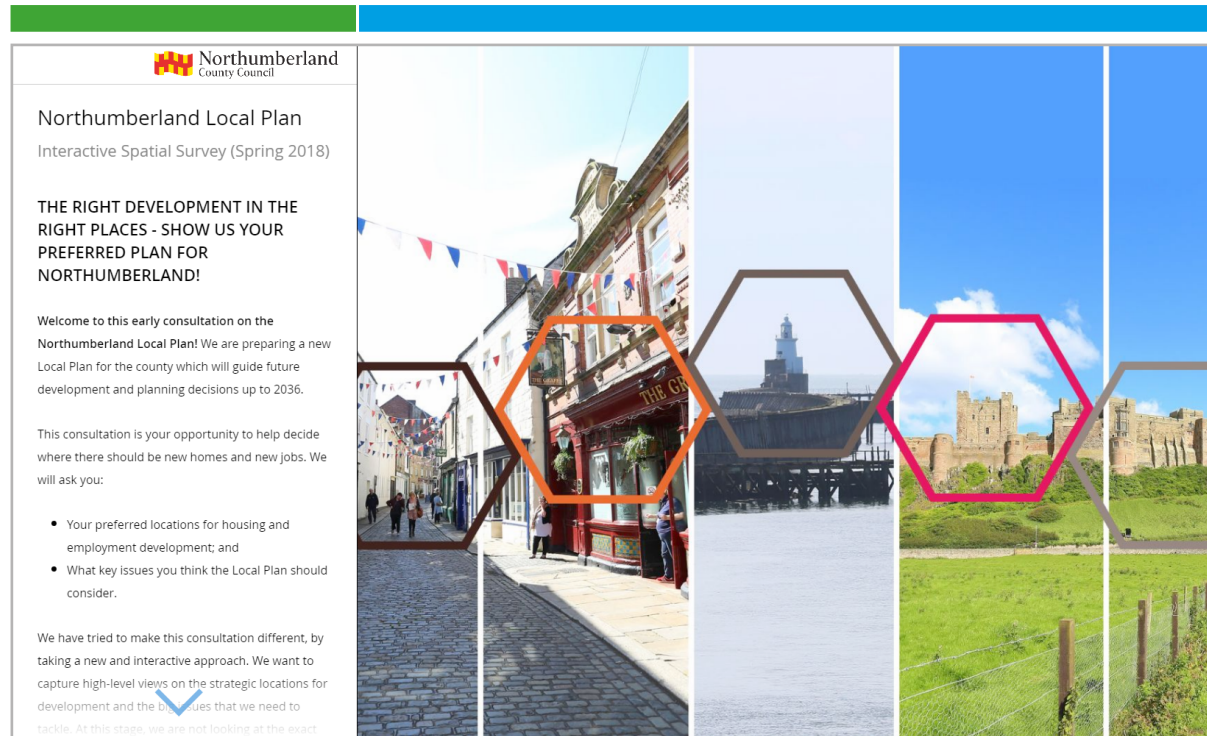
This guide has been produced to help you complete the Online Spatial Survey and includes step-by-step instructions with illustrations to assist you. To access the survey, please visit <http://bit.ly/NCC-LP-Spatial-Survey>.

If you have any further questions, you can also view the [Frequently Asked Questions \(FAQ\)](#). Alternatively, contact the Planning Policy Team using the contact details on the final page of this document.

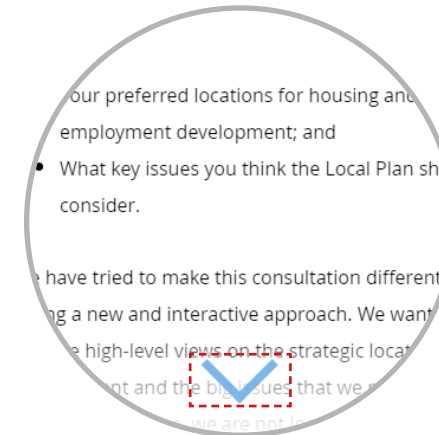
Overview of Home Page

This is the home page of the consultation portal. This website is divided into two sides, with the **Left Side Panel** showing all the background information, instructions and the descriptions of the task. The **Right Side Panel** holds the main task for each sections.

LEFT SIDE PANEL



How do I navigation through the Portal?




1. To view all of the information in the left side panel, click the **'Arrow'** to scroll down.



2. You can navigate between different steps of this survey using these buttons. You will see them when you scroll down to the bottom of the left side panel.

Overview of Part 01

Before you begin the spatial survey, we need some information from you so that we have a record of who has completed the survey. Your details will be added to the Local Plan Consultation Database and we will contact you with details of future consultations and updates about the progress of the Northumberland Local Plan. Simply fill in and submit the form to complete this page before moving on the Part 02.

**Northumberland**
County Council

Northumberland Local Plan
Interactive Spatial Survey (Spring
2018)

Part 1: About You

We need some information from you so that we have a record of who has completed the survey. Your individual responses to this consultation will remain confidential.

If you are not already on our Local Plan consultation database, your details will be added and we will contact you with details of future consultations and updates about the progress of the Northumberland Local Plan.

Please note that your details will not be passed to any third parties. If you no longer wish to be included in our database or wish to update your details, please contact programme.officer@northumberland.gov.uk or telephone 01670 620294.

You can view further information about the Northumberland Local Plan [HERE](#), contact us at planningstrategy@northumberland.gov.uk or telephone 0345 600 6400.

Remember to click the [Submit](#) button at the end

The next step (Part 2) will show you some key factors to consider when deciding where you would like to see development in the county. This will assist you when you

Local Plan Spring Consultation

Please provide us the following details:

***Required**

Have you previously commented on any Local Plan Consultations in Northumberland? *

☐ Yes

☒ No

Title *

Mr ▾

First Name (s) *

John

Surname *

Smith

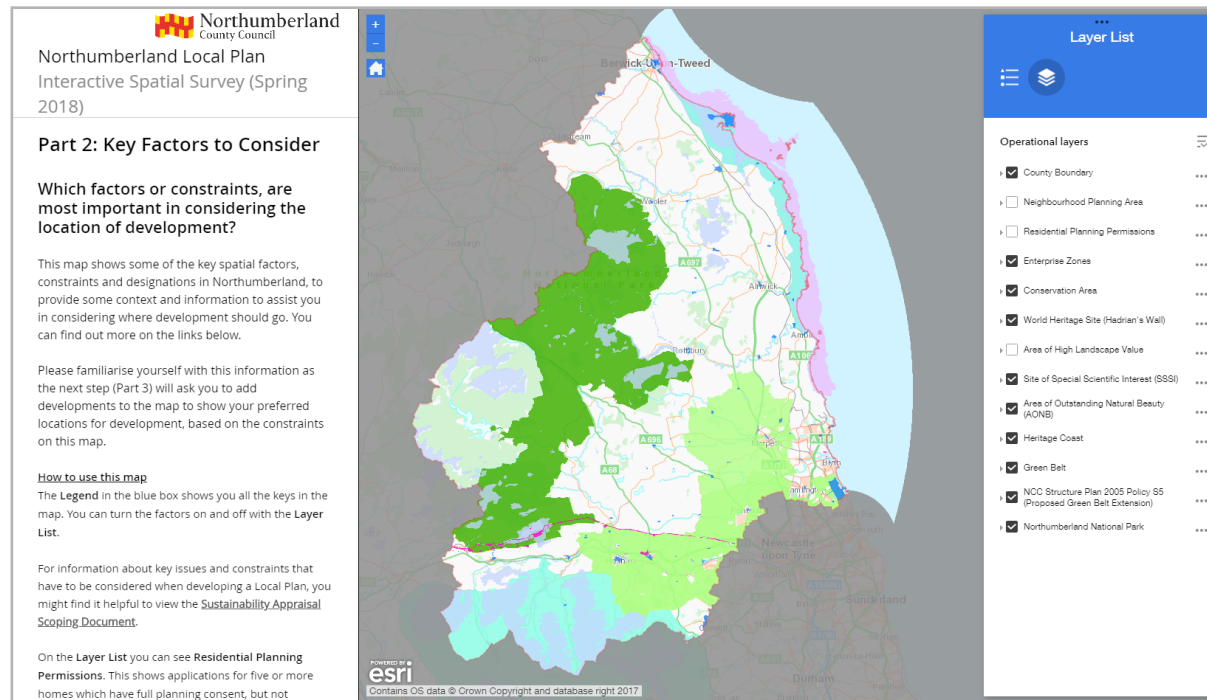
Organisation / Company / Business (if applicable)

An example of a completed Personal Information Form (Part 01)



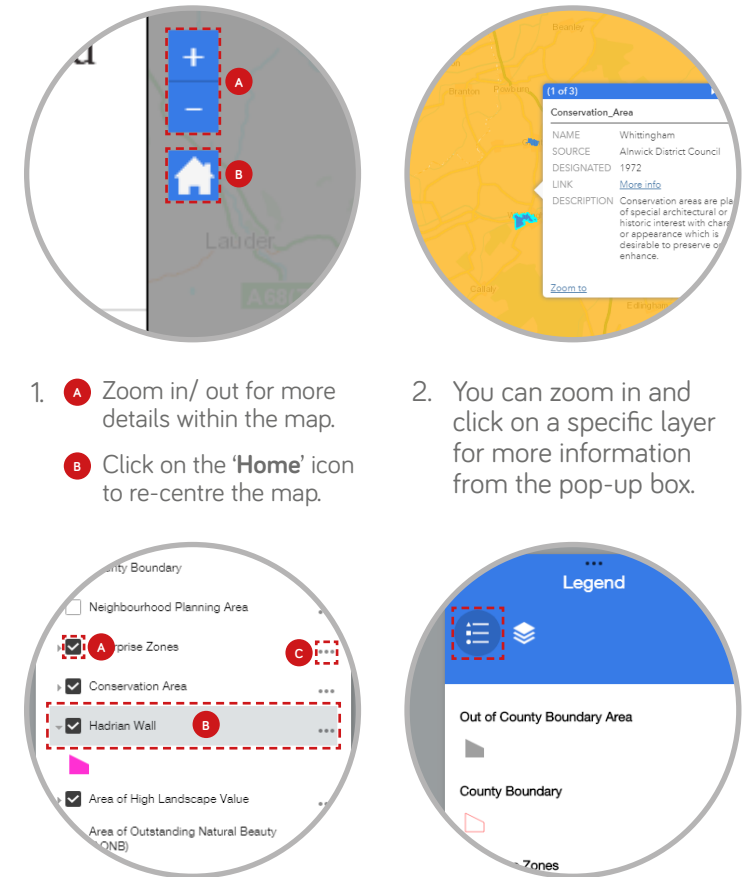
Overview of Part 02

This page provides you with some information on the key spatial factors, constraints and designations in Northumberland. It seeks to provide some context and information to assist you in considering where development should go. Additional information has also been provided on the left side panel to help you inform your responses on the next page (Part 03).



Interactive Development Constraints Map (Part 02)

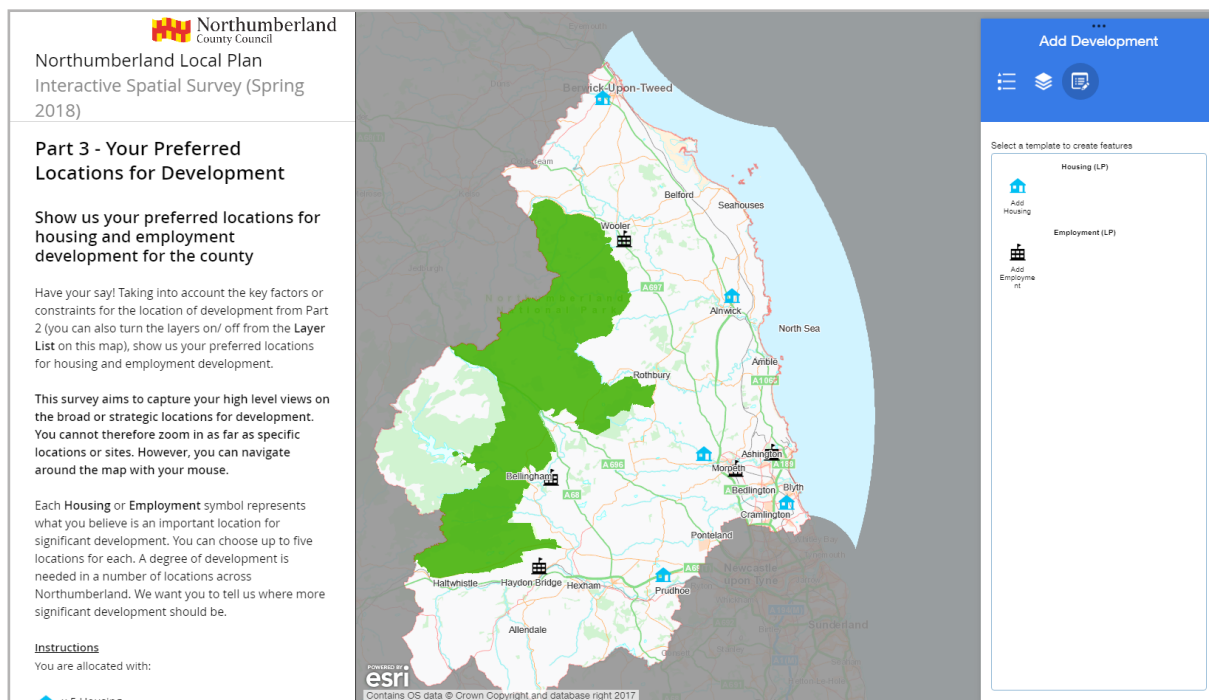
How do I use the interactive map?



Overview of Part 03

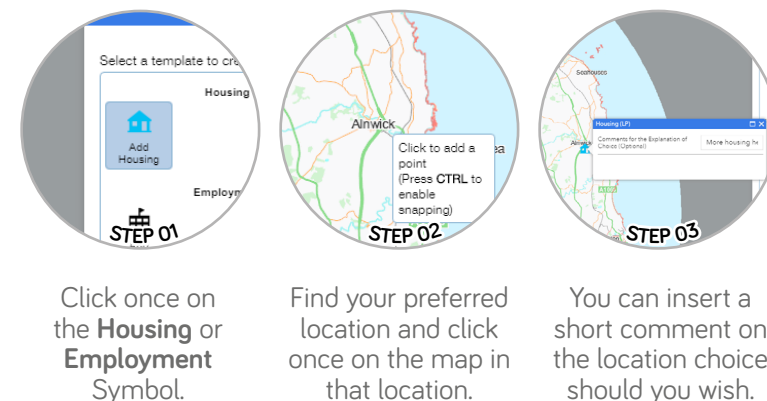
On this page you will be asked to provide us with your high level views on the broad or strategic locations for housing and employment development. The task requires you to place your preferred five locations for housing 🏠 and five locations for employment 🏢 on the map. You will have the option to include a short comment (up to 100 character in length) for every choice.

Please note that only your first five choices for each type of development will be recorded even if you try to place more than your allotted symbols. Also, you cannot move a symbol or add a comment once you have positioned it on the map. Therefore please think carefully about your preferred locations and any comments before placing a symbol on the map.



An example of what a completed Preferred Locations Map could look like (Part 03)

How do I place my location choices?




You are to place five housing and five employment symbols on the map. Repeat the above steps to complete your 10 choices.

How do I look at the factors/ constraints here?



Overview of Part 04

We would like to know what key issues you think the Local Plan needs to consider. To indicate which key issues you think are most important for the Northumberland Local Plan, tick the box next to the relevant as shown below. If there are any other key issues that you think the Local Plan should consider, you can include a short comment at the end of the form.

**Northumberland**
County Council

Northumberland Local Plan
Interactive Spatial Survey (Spring
2018)

Part 4: Key Issues

**Tell us the key issues that you think
the Local Plan should consider**

We want to know what you think are the key issues
that the Northumberland Local Plan needs to
consider. Please select the issues that you think are
most important for the Local Plan to address.

Remember to click the [Submit](#) button at the end

NEXT STEP

Local Plan Spring Consultation

***Required**

Please tick the key issues that you think are most important to
you: *


☐ Opportunities for employment
☐ Access to education and training opportunities
☐ Enough homes to meet needs
☒ Decent, affordable homes for everyone
☐ Protection of our natural environment
☐ Protection of our heritage and culture
☐ Transport and movement around the county and beyond
☒ Broadband and mobile phone communications
☐ Health and well-being of current and future residents
☐ The impacts of climate change
☐ How we use our natural resources
☒ The quality and design of new built developments

An example of what a completed Key Issues Form could look like (Part 04)



Overview of Part 05

The final page asks for some very quick feedback on how you found the experience of using this. Click on one of the options and then submit to finish.

**Northumberland**
County Council

Northumberland Local Plan
Interactive Spatial Survey (Spring
2018)

Thank You!

Thank you for your input, which will help shape the future of Northumberland. Although your individual responses will remain confidential, we will provide overall feedback and analysis on where respondents said development should go and what people think are the key issues that the plan should consider. This will be provided alongside the Summer Consultation on a Draft Northumberland Local Plan.

We value your feedback and want to know about your experience on this Interactive Spatial Survey for the Local Plan. Please share with us.

You can now exit the Consultation Portal.

Local Plan Spring Consultation Feedback

What did you think of this Online Spatial Survey for the Local Plan?



☐ I like it!☐ I dislike it!

This form was created inside Northumberland County Council. Report Abuse - Terms of Service - Additional Terms

Google Forms

An example of the Consultation Feedback Form



- ✉ Planning Policy
Northumberland County Council
County Hall, Morpeth
Northumberland NE61 2EF
- ☎ 0345 600 6400
- @ planningstrategy@northumberland.gov.uk
- 🌐 www.northumberland.gov.uk



Planning Policy

Northumberland County Council
County Hall, Morpeth
Northumberland NE61 2EF

T: 0345 600 6400

E: planningstrategy@northumberland.gov.uk

W: www.northumberland.gov.uk