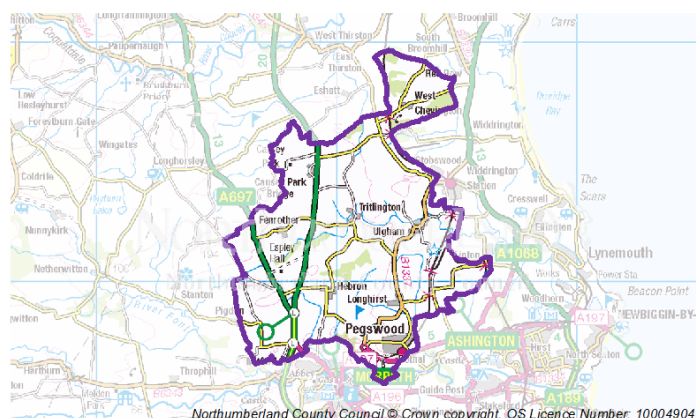
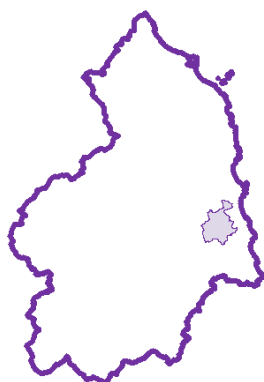




8,009 ha / 80 sq km



WHO WE ARE			Ethnic Group (all usual residents)		Number	Per cent
<b>Key Population Statistics (all usual residents)</b>	<b>Number</b>	<b>Per cent</b>	White	4,782	98.7	
All People	4,844	n/a	Mixed / multiple	29	0.6	
All Males	2,392	49.4	Asian / Asian British	21	0.4	
All Females	2,452	50.6	Black / African / Caribbean / Black British	10	0.2	
Number of people per hectare*	1	n/a	Other	2	0.0	
Number of people per square kilometre*	67	n/a				
<b>Population by Age (all usual residents)</b>	<b>Number</b>	<b>Per cent</b>	HOW WE LIVE			
0 – 15 years	862	17.8	<b>Households (all household spaces)</b>	<b>Number</b>	<b>Per cent</b>	
0 – 4	311	6.4	All Household spaces	2,223	n/a	
5 – 15	551	11.4	Household spaces with at least one resident	2,134	96.0	
16 – 64 years	3,162	65.3	Household spaces with no residents	89	4.0	
16 – 24	445	9.2	Average Household size	2.3	n/a	
25 – 64	2,717	56.1				
65 + years	820	16.9	<b>Overcrowded households (all households)</b>	<b>Number</b>	<b>Per cent</b>	
65 – 74	458	9.5	Occupancy rating of -1 or worse (rooms)	73	3.4	
75 +	362	7.5	Households without central heating	11	0.5	
Median age	44	n/a				
			<b>Accommodation Type (all household spaces)</b>	<b>Number</b>	<b>Per cent</b>	
<b>Health (all usual residents)</b>	<b>Number</b>	<b>Per cent</b>	Whole house or bungalow	2,148	96.6	
Day-to-day activities limited a lot	452	9.3	Detached	661	29.7	
Day-to-day activities limited a little	510	10.5	Semi-detached	925	41.6	
Day-to-day activities not limited	3,882	80.1	Terraced	562	25.3	
General health is very good	2,271	46.9	Flat maisonette or apartment	71	3.2	
General health is good	1,574	32.5	Caravan/other mobile or temporary structure	4	0.2	
General health is fair	712	14.7				
General health is bad	229	4.7	<b>Household by Tenure (all households)</b>	<b>Number</b>	<b>Per cent</b>	
General health is very bad	58	1.2	Owned outright	613	28.7	
			Owned with a mortgage or loan	801	37.5	
<b>Religion (all usual residents)</b>	<b>Number</b>	<b>Per cent</b>	Shared ownership (part owned & part rented)	0	0.0	
Christian	3,346	69.1	Social rented	411	19.3	
Buddhist	5	0.1	Private rented including living rent free	309	14.5	
Hindu	5	0.1				
Jewish	2	0.0	<b>Household Composition (all households)</b>	<b>Number</b>	<b>Per cent</b>	
Muslim	3	0.1	One person household	638	29.9	
Sikh	1	0.0	Aged 65 and over	279	13.1	
Other	9	0.2	Other	359	16.8	
No Religion	1,188	24.5				
Not stated	285	5.9				

...continued on next page

HOW WE LIVE (continued)			Method of Travel to Work		
Household composition (continued)	Number	Per cent	(aged 16-74 in employment)	Number	Per cent
One family only	1,432	67.1	Car/van/taxi/motorcycle	1,781	74.5
All aged 65 and over	196	9.2	Public transport	226	9.4
Married/same-sex civil partnership couple	835	39.1	On foot	156	6.5
Cohabiting couple	230	10.8	Bicycle	23	1.0
Lone parent	171	8.0	Work from home	179	7.5
Other household type	64	3.0	Other	27	1.1
<b>Marital &amp; Civil Partnership Status (aged 16+)</b>			<b>Economic Activity (aged 16-74)</b>		
Single (never married/registered in a SSCP**)	1,066	26.8	Economically Active	2,557	70.6
Married	2,152	54.0	Employees part-time	512	14.1
In a Registered SSCP	8	0.2	Employees full-time	1,464	40.4
Separated	110	2.8	Self-employed	355	9.8
Divorced or Formerly in a SSCP	361	9.1	Unemployed	150	4.1
Widowed or Surviving Partner from a SSCP	285	7.2	Full-time student	76	2.1
			Economically Inactive	1,063	29.4
<b>Car or Van Availability (all households)</b>			<b>Industry (aged 16-74 in employment)</b>		
No cars or vans in household	436	20.4	Agriculture, forestry & fishing	70	2.9
1 car or van in household	864	40.5	Mining & quarrying	11	0.5
2 cars or vans in household	655	30.7	Manufacturing	172	7.2
3 cars or vans in household	139	6.5	Elec, gas, steam & air conditioning supply	9	0.4
4 or more cars or vans in household	40	1.9	Water sply; sewage, wste mgmt & remediaton	33	1.4
Average number of cars per household	1.3	n/a	Construction	168	7.0
			Whsale & ret trade; repair motor vehicles...	375	15.7
			Transport & Storage	84	3.5
<b>WHAT WE DO</b>			Accommodation & Food Svc Activities		
<b>Provision of Unpaid Care (all usual residents)</b>			Information & Communication		
People providing unpaid care	494	10.2	Financial & Insurance Activities	66	2.8
Providing 1 – 19 hours	323	6.7	Real Estate	53	2.2
Providing 20 – 49 hours	78	1.6	Professional, Scientific & Technical	24	1.0
Providing 50 + hours	93	1.9	Administrative & Support Service	128	5.4
People providing no unpaid care	4,350	89.8	Pub Admin & Def; Compulsory Soc Sec	85	3.6
			Education	223	9.3
<b>Highest Level of Qualification (aged 16+)</b>			Human Health & Social Work		
No qualifications	847	21.3	Other	210	8.8
Level 1 qualifications	511	12.8		435	18.2
Level 2 qualifications	702	17.6		122	5.1
Apprenticeship	143	3.6	<b>Occupation (aged 16-74 in employment)</b>		
Level 3 qualifications	525	13.2	Managers, Directors and Senior Officials	281	11.7
Level 4 qualifications and above	1,128	28.3	Professional Occupations	456	19.1
Other qualifications	126	3.2	Associate Professional and Technical Occupations	293	12.2
			Administrative and Secretarial Occupations	217	9.1
<b>Weekly Hours Worked</b>			Skilled Trades Occupations		
<b>(aged 16 - 74 in employment)</b>	<b>Number</b>	<b>Per cent</b>	Caring, Leisure and Other Service Occupations	293	12.2
15 hours or less (part-time)	178	7.4	Sales and Customer Service Occupations	245	10.2
16-30 hours (part-time)	471	19.7	Process, Plant and Machine Operatives	212	8.9
31-48 hours (full-time)	1,411	59.0	Elementary Occupations	141	5.9
49 hours or more (full-time)	332	13.9		254	10.6

\*The area figure provided in this profile should be used when quoting the area of the ward but is not the figure used to calculate population density.

\*\*SSCP – Same-Sex Civil Partnership.

Source: Produced by the Northumberland County Council Policy and Research Team. © Crown copyright. Statistics have been sourced from ONS 2011 Census Key and Quick Statistics tables via Neighbourhood Statistics downloaded 27/01/2013. For further information view the background information.

web: [www.Knowledge.Northumberland.gov.uk](http://www.Knowledge.Northumberland.gov.uk) e-mail: [Knowledge@Northumberland.gov.uk](mailto:Knowledge@Northumberland.gov.uk)